



DDC  
3222 N. 6th Mile Road  
Casper, WY 82604

**RM-13846**

1":100' - MD  
11/6/2013 11:43:49 AM

**Oper. Company:** Noble Energy Inc  
**Country:** USA  
**State / Province:** CO  
**County / Parish:** Weld  
**Started:** 11/02/2013 02:00 AM

**API/UWI:** 05-123-37528  
**Field:** Wattenberg  
**Well:** Rohn State LD09-64-1HN  
**Rig:** H&P 326  
**Ended:** 11/06/2013 11:00 AM

**Personnel**

**Day Hand:** Bob Kubistek  
**Night Hand:** Josh Jann  
**Comp. Emp:** DDC

**Location**

**Latitude:** 40° 45' 51.156 N  
**Longitude:** 103° 51' 41.940 W  
**Elev. GL:** 4716  
**Elev. DF:** 30  
**Elev. KB:** 4746

**Hole Data**

Size	From	To
13 3/4	0	1255
8 3/4	1255	6144
6 1/8	6144	9687

**Casing Data**

Size	From	To
9 5/8	0	1255
7	1255	6144
4 1/2	6144	9687

**Bit Sizes**

Size	From	To
13 3/4	0	1255
8 3/4	1255	6144
6 1/8	6144	9687

**Mud Data**

Type	Weight	Density	Viscosity	Rm	Rmf	Rmc	From	To
LSND	10.3		37				0	0

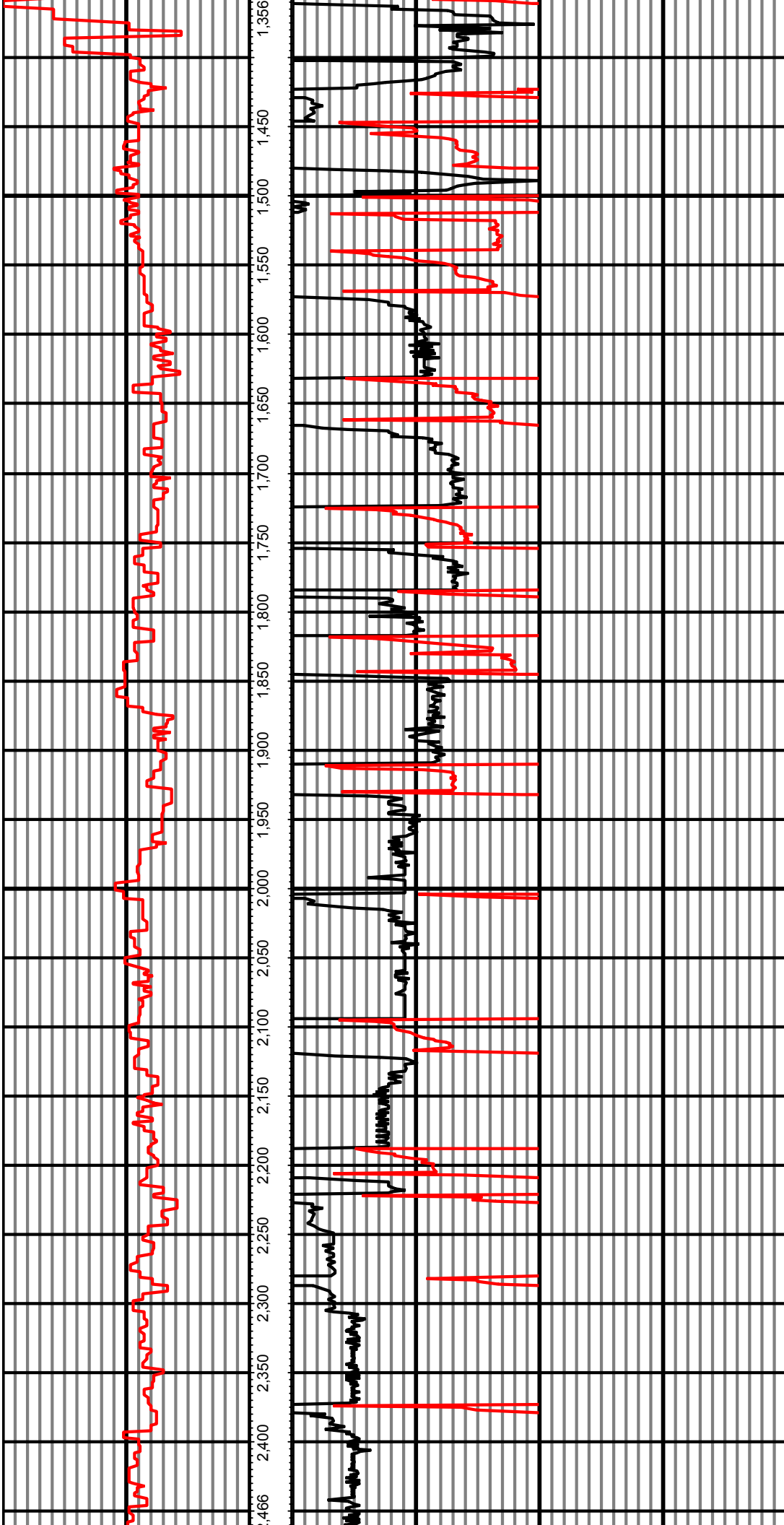
**Tool Run Data**

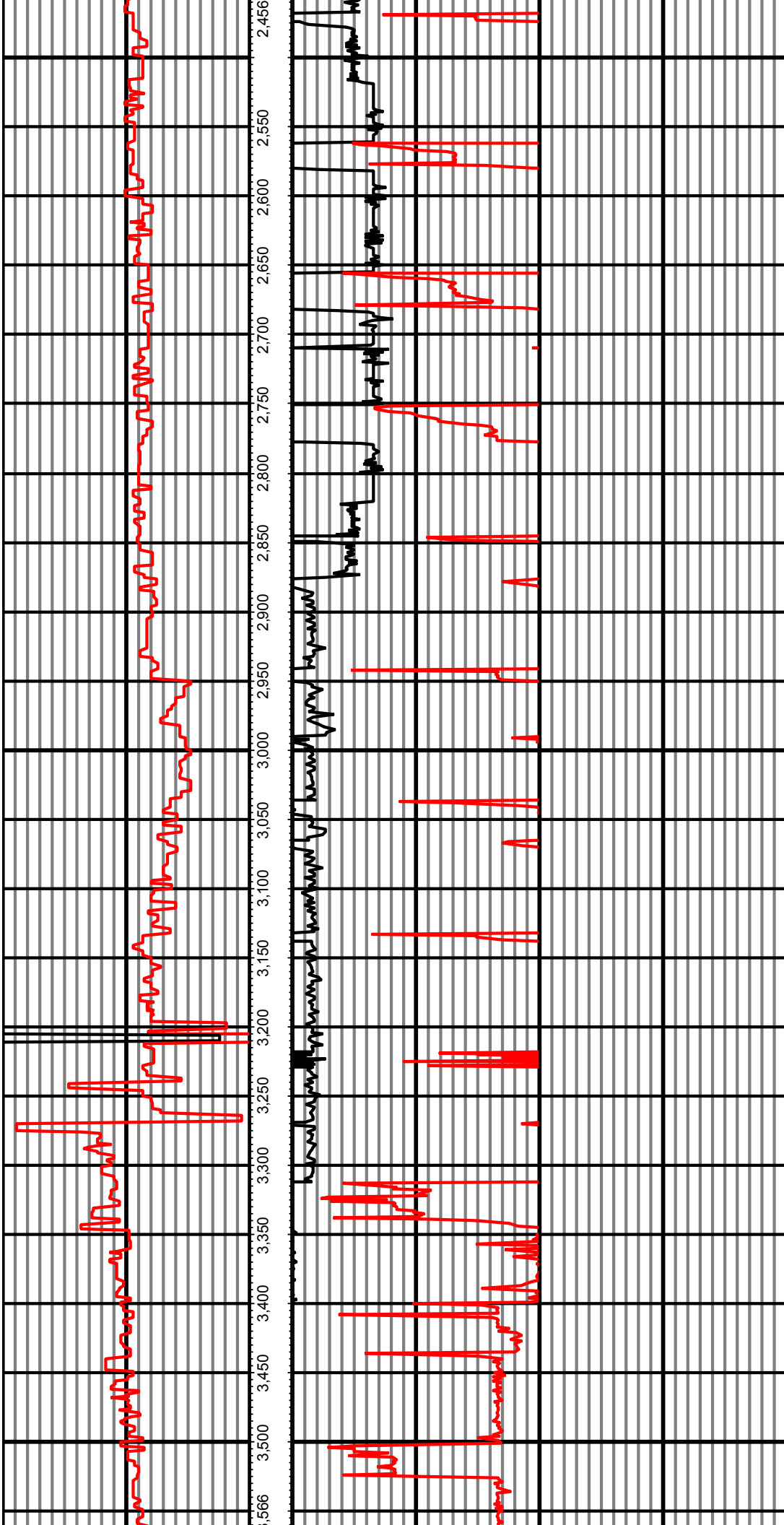
Serial Number	Gamma Offset	Resist. Offset	Start Time	Start Depth	End Time	End Depth
1862	36	0	11/2/2013 2:00:40 AM	1255	11/3/2013 1:30:40 AM	5015
1862	45	0	11/3/2013 3:30:26 AM	5015	11/3/2013 1:24:26 AM	6144
1862	52	0	11/4/2013 11:30:35 PM	6144	11/6/2013 11:00:35 AM	9687

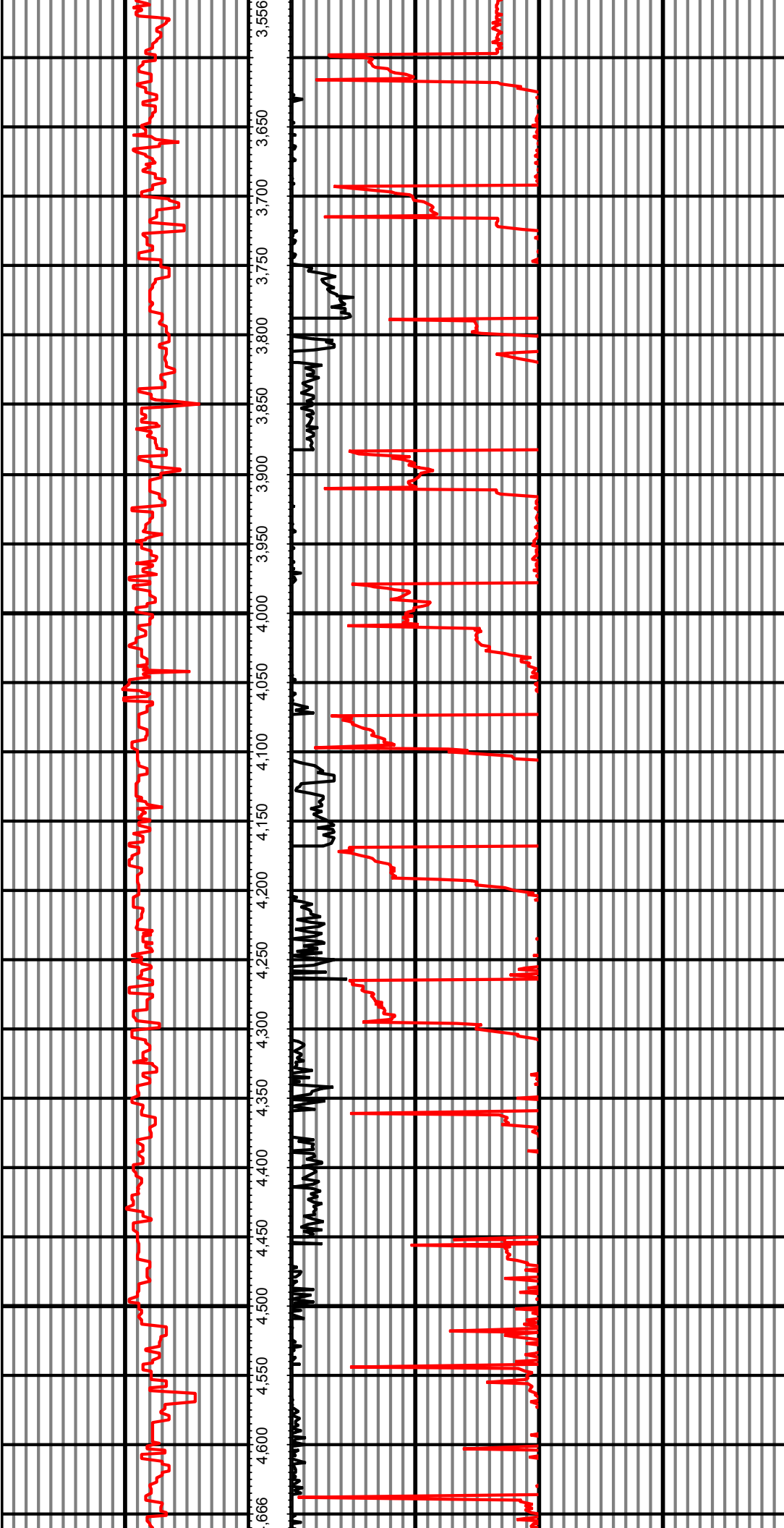
*All interpretations are opinions based on inferences from electrical or other measurements and we cannot and do not guarantee the accuracy or correctness of any interpretation, and we shall not except in the case of gross or willful negligence on our part, be liable or responsible for any loss, cost damages or expenses incurred or sustained by anyone resulting from an interpretation made by any of our officers, agents, or employees.*

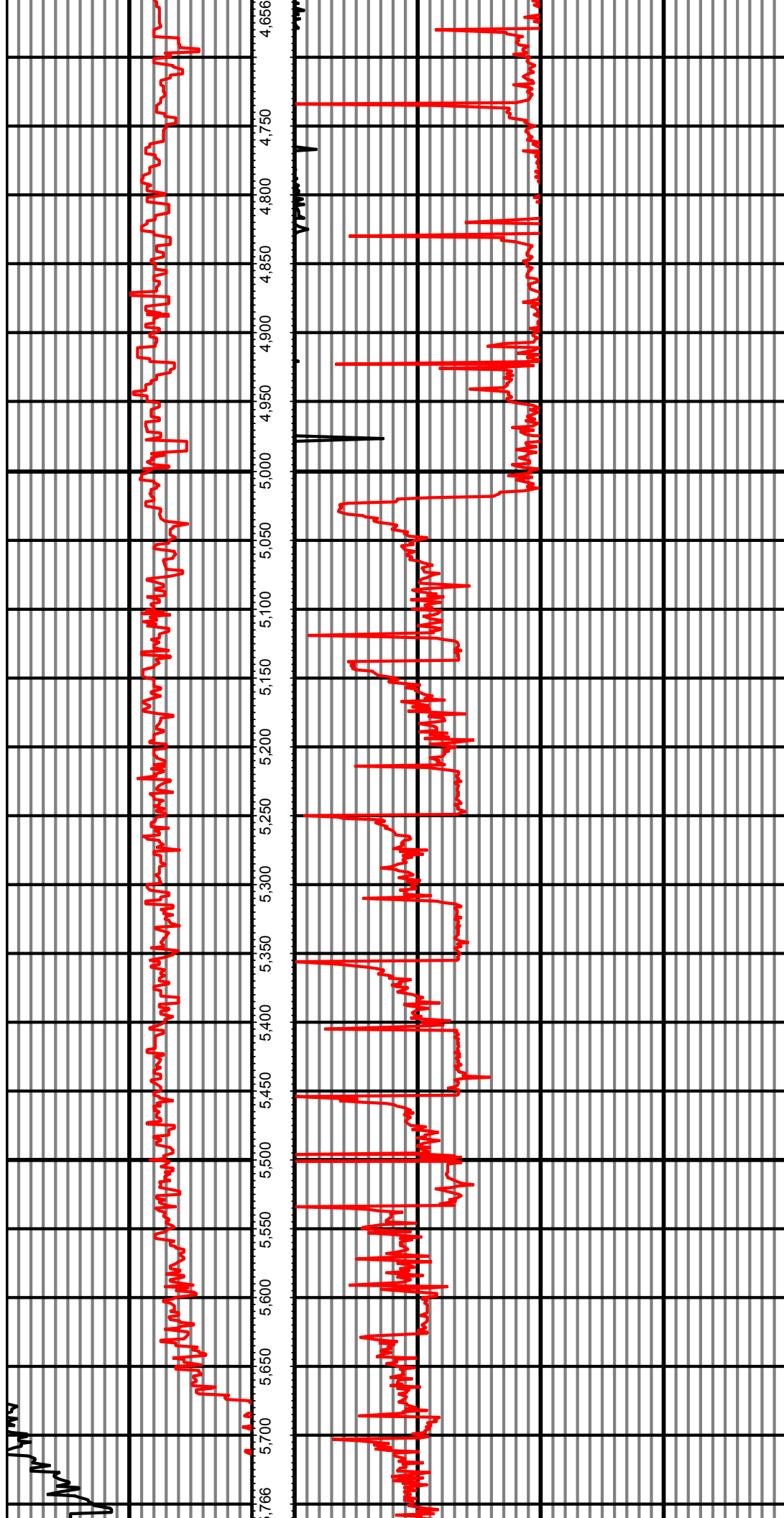
0.00 Counts(mG) 127.50 MD 0.00 ROP(FT/HR) 602.47  
127.50 2 255.00 FT 602.47 2 1,204.94

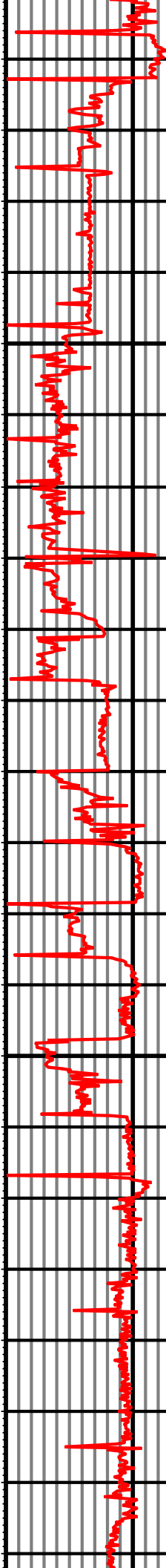
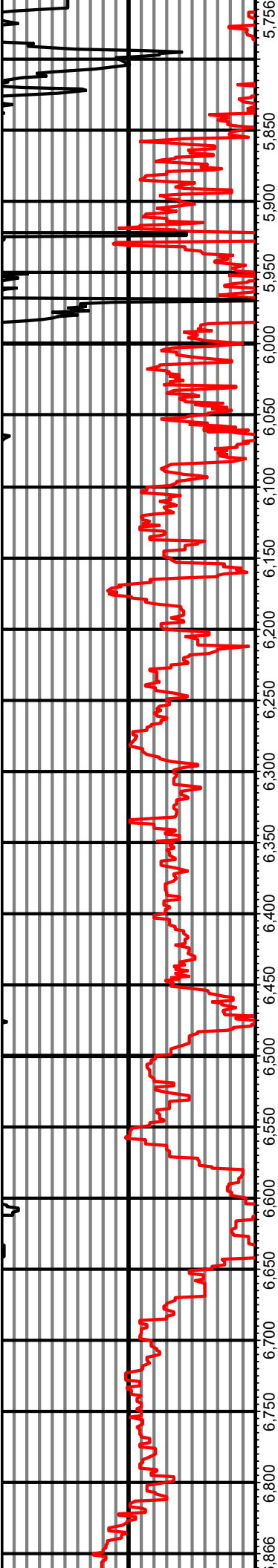


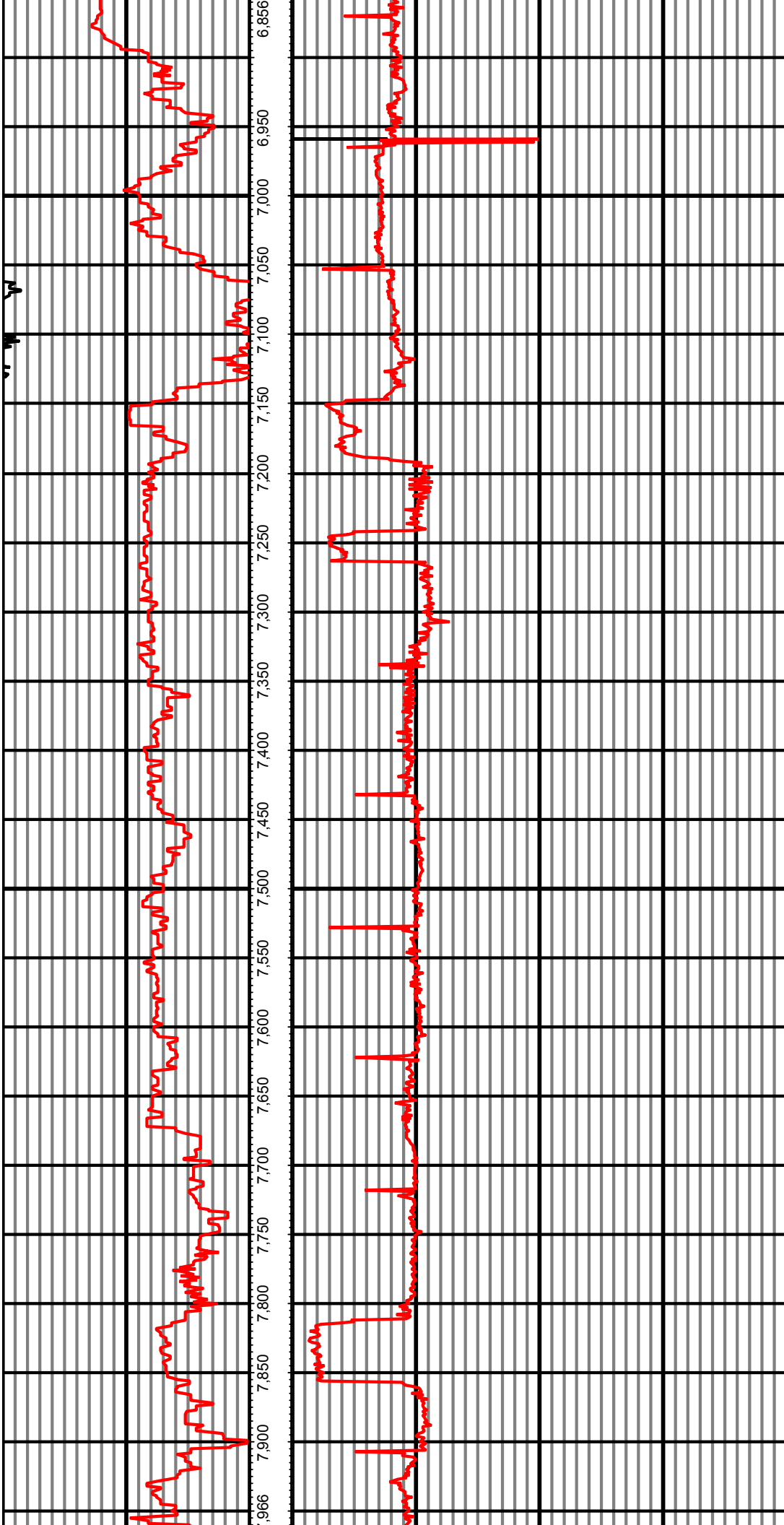


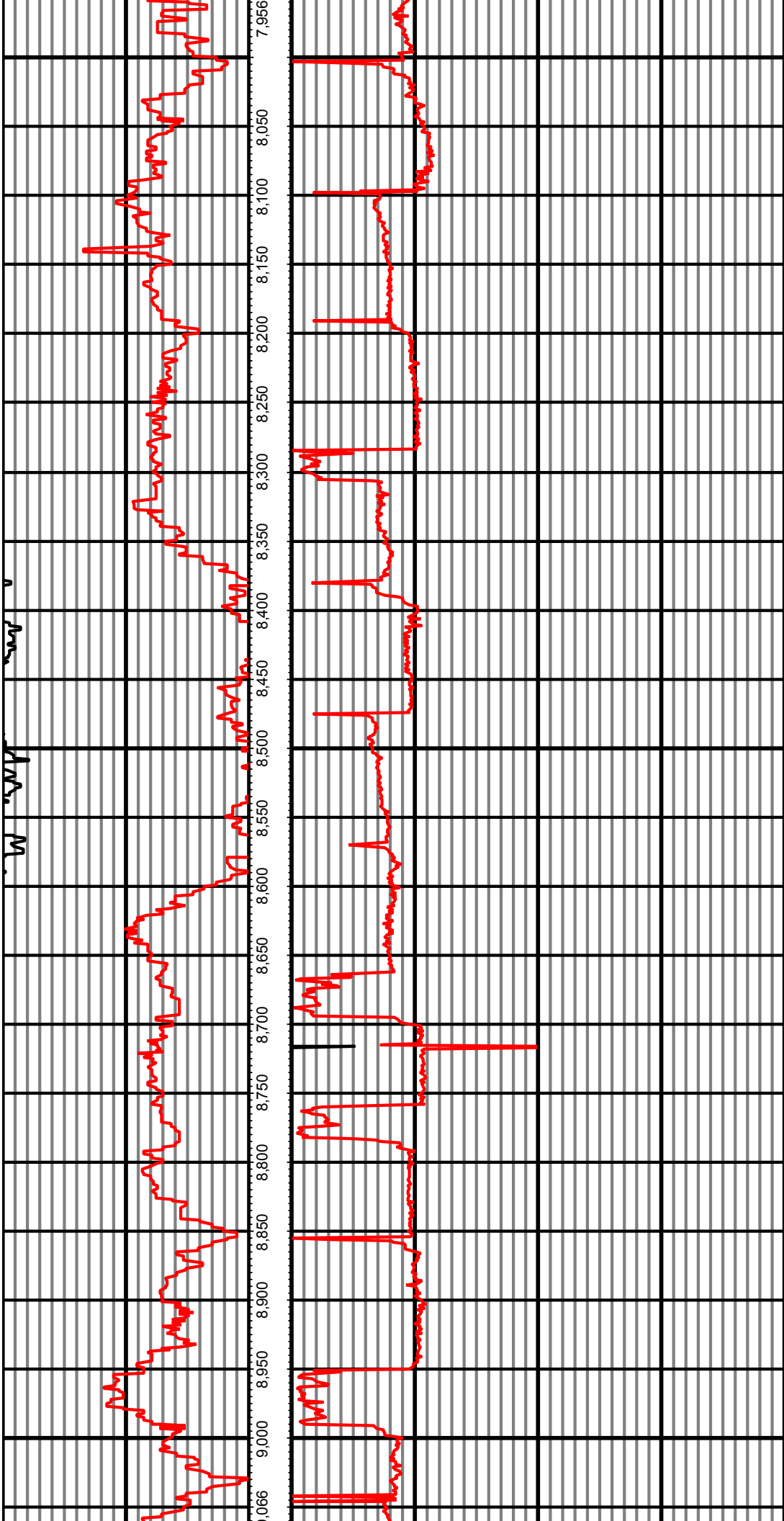




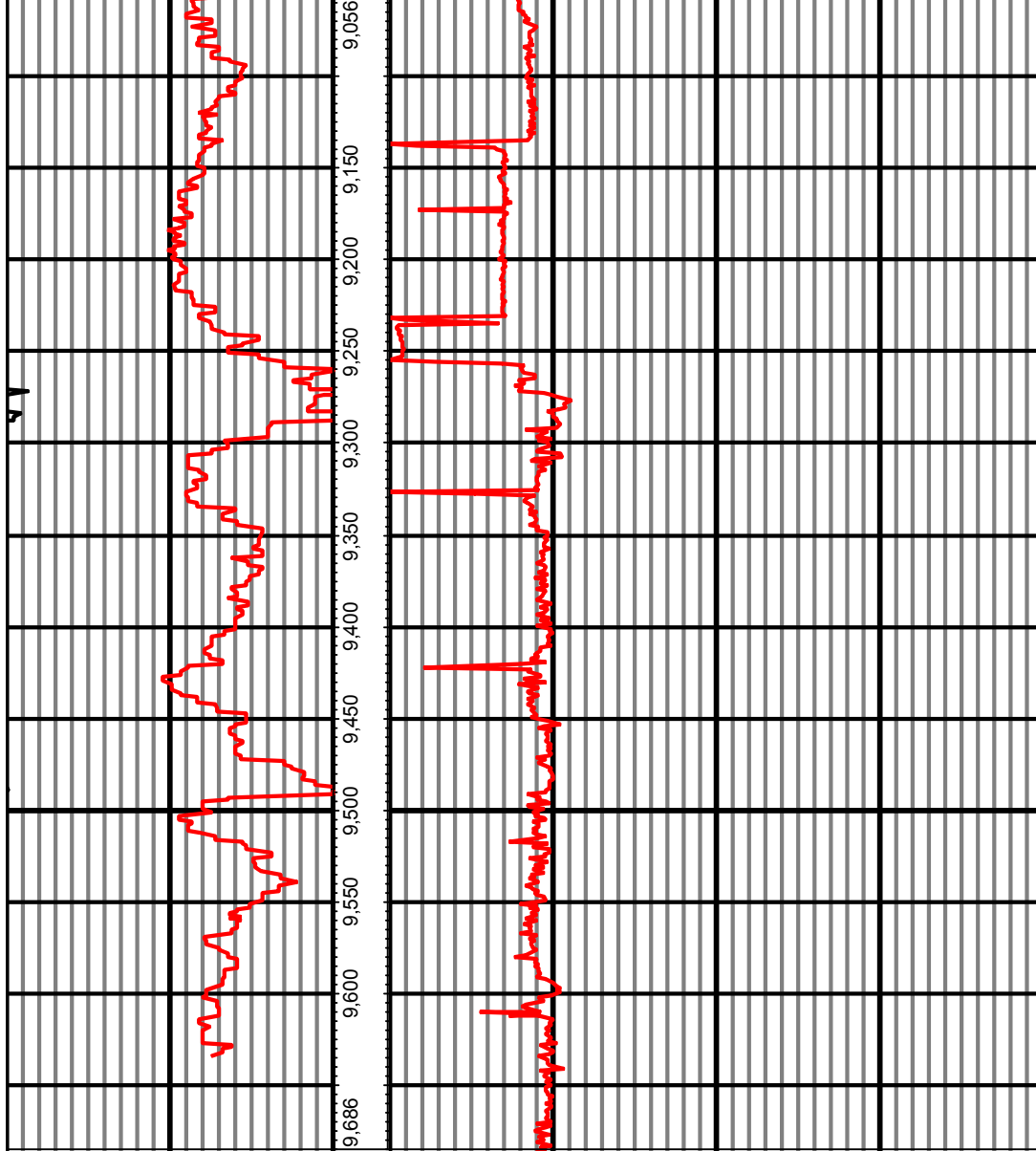












0.00 Counts(mG) 127.50 MD 0.00 ROP(FT/HR) 602.47  
127.50 2 255.00 FT 602.47 2 1,204.94