

LEGEND:

PROPOSED LOCATION



ConocoPhillips Company

RESERVE #3-65 35-34 1H
SECTION 35, T3S, R65W, 6th P.M.
660' FNL 400' FEL



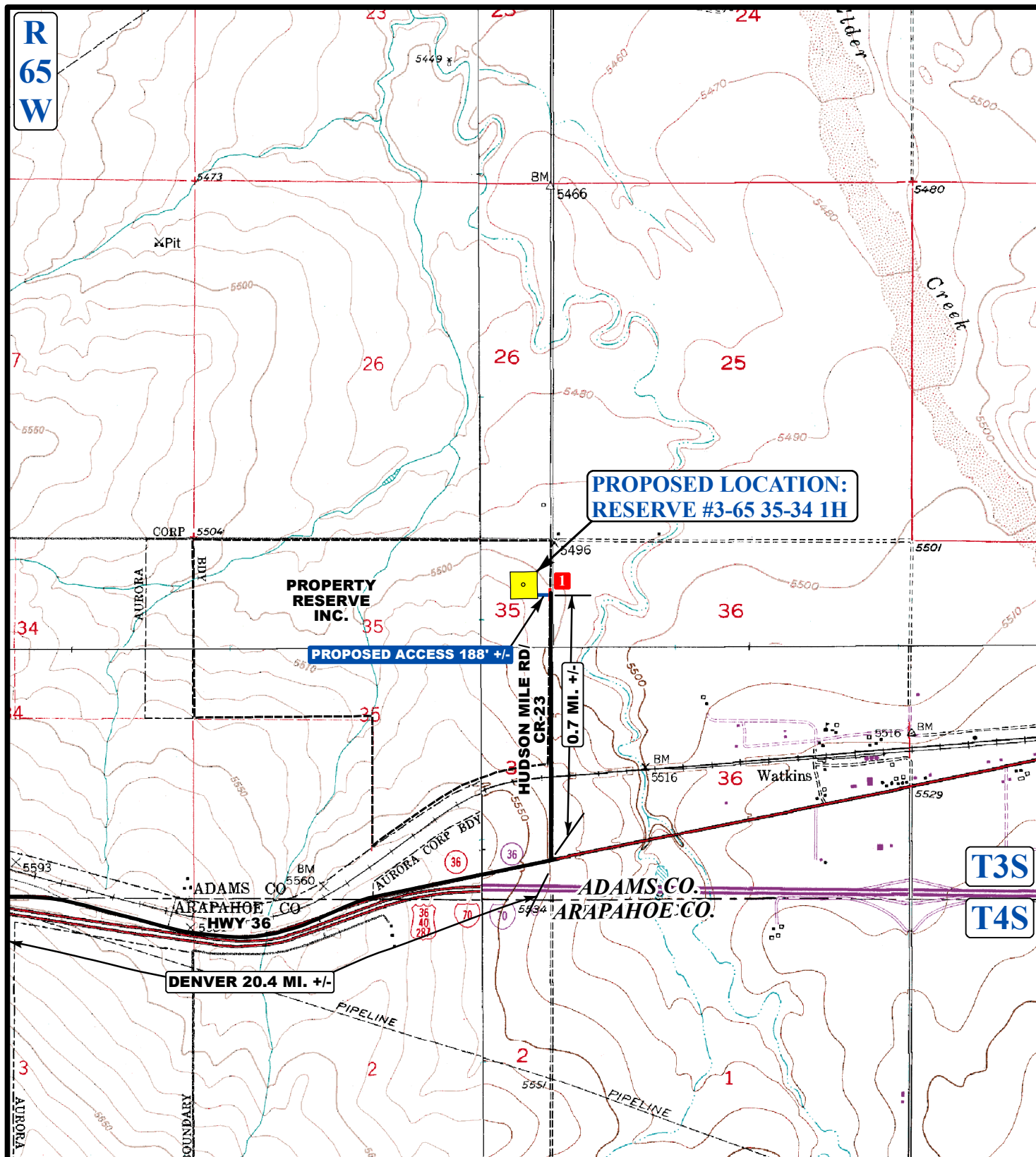
Uintah Engineering & Land Surveying
85 South 200 East Vernal, Utah 84078
(435) 789-1017 * FAX (435) 789-1813

**ACCESS ROAD
MAP**

08 28 13
MONTH DAY YEAR

SCALE: 1:100,000 DRAWN BY: J.L.H. REVISED: 00-00-00





LEGEND:

- EXISTING ROADS
- PROPOSED ACCESS ROAD
- 18" CMP REQUIRED



ConocoPhillips Company

RESERVE #3-65 35-34 1H
SECTION 35, T3S, R65W, 6th P.M.
660' FNL 400' FEL



Uintah Engineering & Land Surveying
 85 South 200 East Vernal, Utah 84078
 (435) 789-1017 * FAX (435) 789-1813

ACCESS ROAD
MAP

08 28 13
 MONTH DAY YEAR

SCALE: 1"=2000' DRAWN BY: J.L.H. REVISED: 00-00-00

