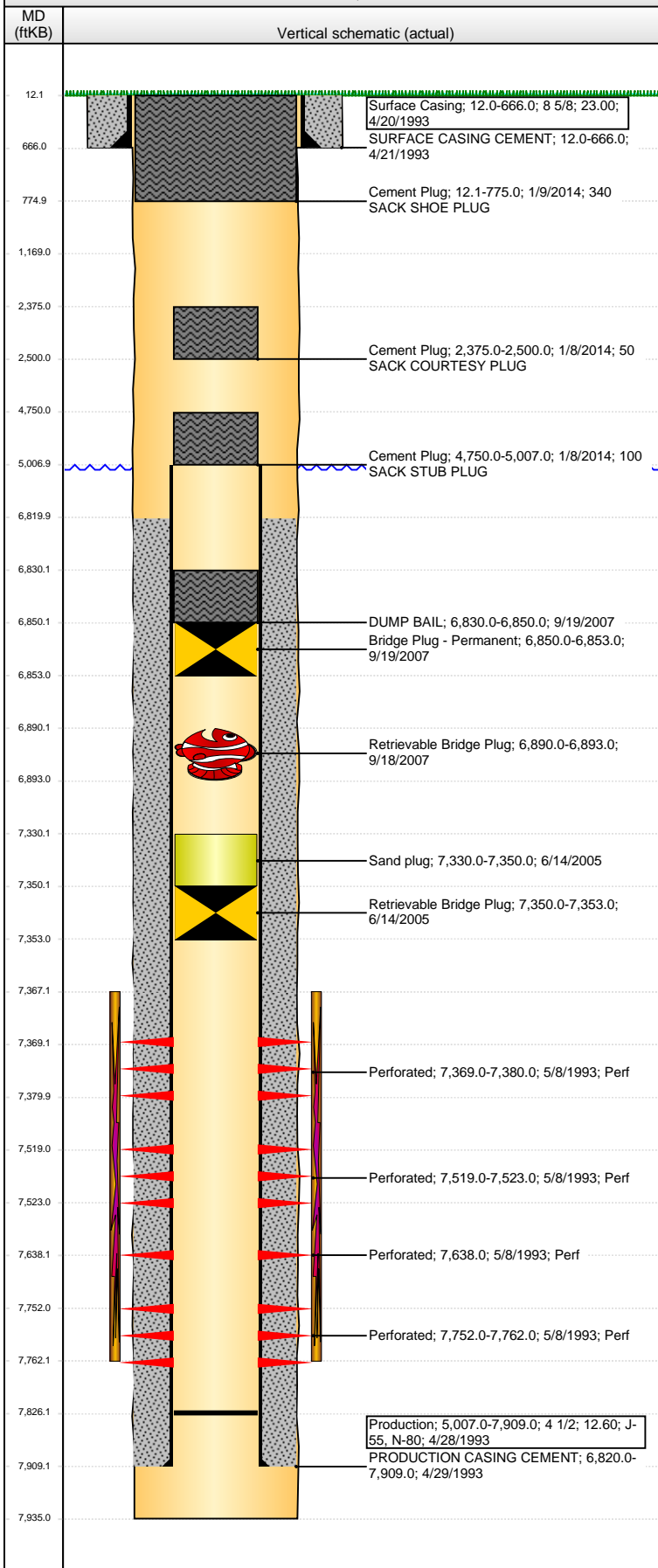


Well Name: VON REYN MC09-03

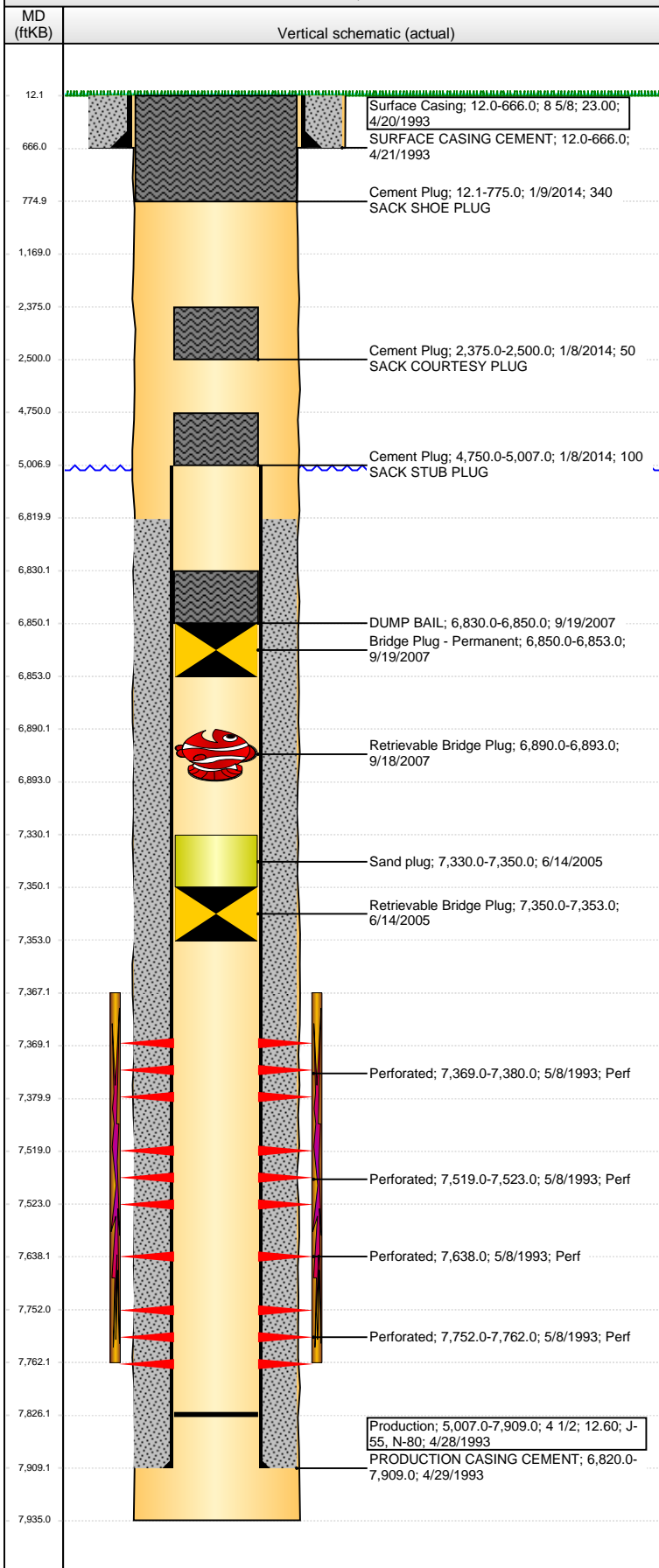
VERTICAL - ORIGINAL HOLE, 1/23/2014 10:55:13 AM



Well Header			
API	Business Unit	District	Well Config
05-013-06302	WATTENBERG	15	VERTICAL
Original KB Elevation (ft)	KB - GL / MSL (ftKB)	Spud Date	P & A Date
5,187.00	12.00	4/20/1993	1/9/2014
Comment			
Directions To Well			
HWY 287 & LOOKOUT RD, W 7/10, S 1/10, E 2/10 INTO.			
Congressional Location			
Quarter 1	Quarter 2	Quarter 3	Quarter 4
		NE	NW
Section	Township	Twnshp N...	Range
9	1	N	69
Rng E/W Dir			
W			
Bottom Hole Location			
North-South Distance (ft)	From N or S Line	East-West Distance (ft)	From E or W Line
Plug Back Total Depths			
Date	Depth (ftKB)	Method	Com
4/28/1993	7,826.0	TAG	
Wellbore Sections			
Section Des	Size (in)	Act Top, MD (ftKB)	Act Btm, MD (ftKB)
SURFACE	12 1/4	12.0	666.0
PRODUCTION	7 7/8	666.0	7,935.0
Zone Statuses			
Zone Name	Status Date	Status	Job
CODELL	6/3/1993	PR	DRILLING/COMPLETION - ORIGINAL, 4/20/1993 00:00
CODELL	6/14/2005	SI	SCIENTIFIC DATA COLLECTION, 6/13/2005 00:00
CODELL	9/19/2007	AB	SCIENTIFIC DATA COLLECTION, 9/18/2007 00:00
NIOBRARA	6/3/1993	PR	DRILLING/COMPLETION - ORIGINAL, 4/20/1993 00:00
NIOBRARA	6/14/2005	SI	SCIENTIFIC DATA COLLECTION, 6/13/2005 00:00
NIOBRARA	9/19/2007	AB	SCIENTIFIC DATA COLLECTION, 9/18/2007 00:00
Casing Strings			
Surface Casing, 666.0ftKB			
Casing Description	Run Date	OD (in)	Wt/Len (l...)
Surface Casing	4/20/1993	8 5/8	23.00
Grade	Top, MD (ft...)	MD (ftKB)	
	12.0	666.0	
Production, 7,909.0ftKB			
Casing Description	Run Date	OD (in)	Wt/Len (l...)
Production	4/28/1993	4 1/2	11.60
Grade	Top, MD (ft...)	MD (ftKB)	
J-55	12.0	7,909.0	
Cement			
Description	Top Depth (ftKB)	Bottom Depth (ftKB)	
SURFACE CASING CEMENT	12.0	666.0	
Description	Top Depth (ftKB)	Bottom Depth (ftKB)	
PRODUCTION CASING CEMENT	6,820.0	7,909.0	
Description	Top Depth (ftKB)	Bottom Depth (ftKB)	
DUMP BAIL	6,830.0	6,850.0	
Description	Top Depth (ftKB)	Bottom Depth (ftKB)	
Cement Plug	4,750.0	5,007.0	
Description	Top Depth (ftKB)	Bottom Depth (ftKB)	
Cement Plug	2,375.0	2,500.0	
Description	Top Depth (ftKB)	Bottom Depth (ftKB)	
Cement Plug	12.1	775.0	
Tubing Components			
Item Des	OD (in)	Wt (lb/ft)	Grade
Jts	Len (ft)	Btm (ftKB)	Btm (TVD) (ftKB)
Perforation Data			
Zone	Bnch/St g	Entered Shot Total	Top (ftKB)
NIOBRARA, ORIGINAL HOLE		3	7,369.00
NIOBRARA, ORIGINAL HOLE		3	7,519.00
NIOBRARA, ORIGINAL HOLE		1	7,638.00
CODELL, ORIGINAL HOLE		6	7,752.00
Btm (ftKB)	Date		
7,380.00	5/8/1993		
7,523.00	5/8/1993		
7,638.00	5/8/1993		
7,762.00	5/8/1993		
Stimulations & Treatments			
Date	Zone	Primary Job Type	
5/10/1993	NB-CD, ORIGINAL HOLE	DRILLING/COMPLETION - ORIGINAL	
Technical Result	Tech Result Details	Tech Result Note	
Comment			

Well Name: VON REYN MC09-03

VERTICAL - ORIGINAL HOLE, 1/23/2014 10:55:16 AM



Other In Hole					
Run Date	Des	OD (in)	Top (ftKB)	Btm (ftKB)	
6/14/2005	Retrievable Bridge Plug	3.99	7,350.0	7,353.0	
6/14/2005	Sand plug	3.99	7,330.0	7,350.0	
9/18/2007	Retrievable Bridge Plug	3.99	6,890.0	6,893.0	
9/19/2007	Bridge Plug - Permanent	3.99	6,850.0	6,853.0	

Logs				
Date	Type	Top, MD (ftKB)	Btm, MD (ftKB)	
4/28/1993	COMPENSATED DENSITY	6,950.0	7,935.0	
4/28/1993	INDUCTION	6,950.0	7,929.0	
5/7/1993	CBL/CCL/GR	6,620.0	7,821.0	
12/29/2012	GYRO	12.0	6,866.0	