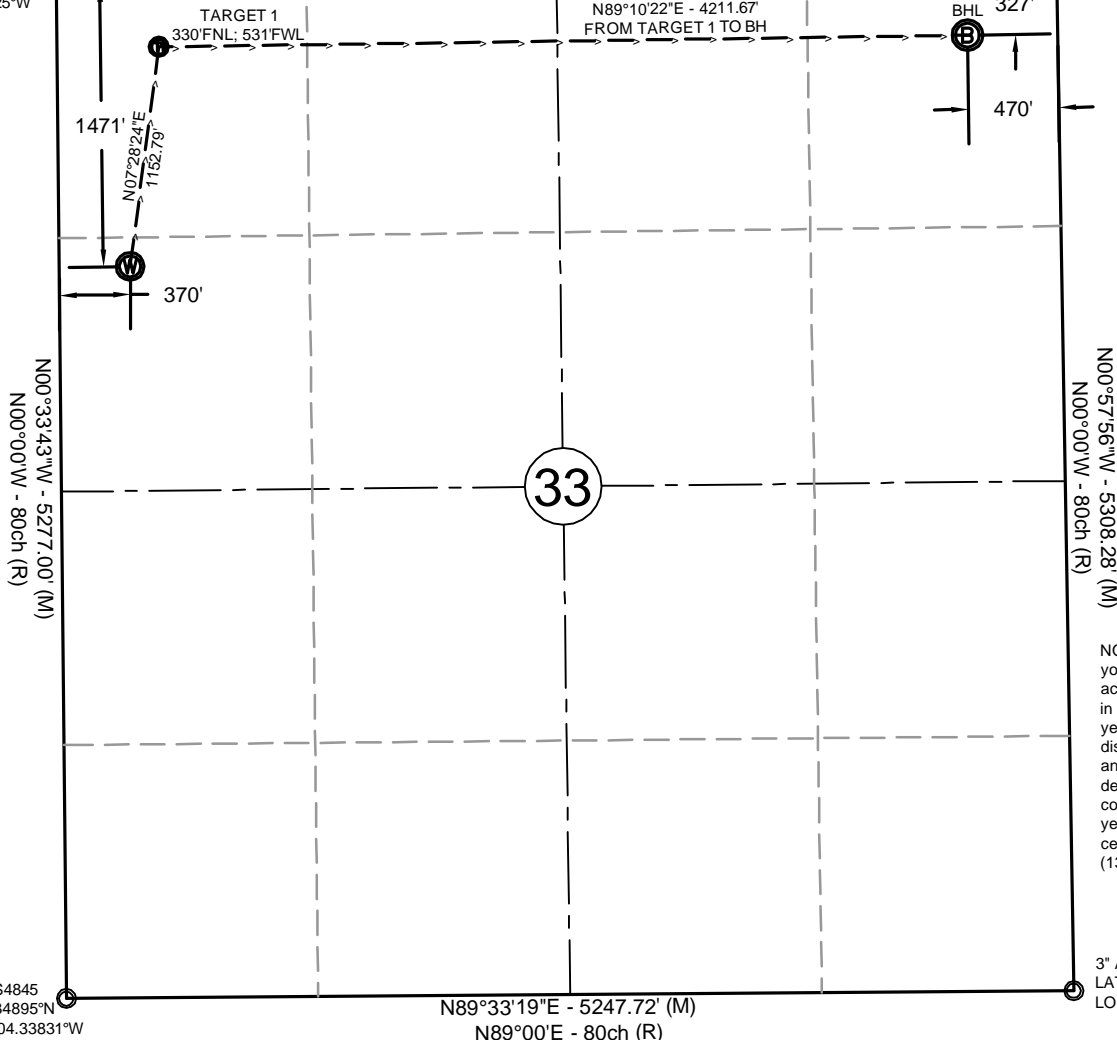


# T5N, R62W, 6th PM

2.5" AC LS7242  
LAT 40.36343°N  
LONG 104.33825°W

S89°12'49"W - 5210.36' (M)  
S89°55'W - 79.96 ch (R)

3" AC LS4845  
LAT 40.36343°N  
LONG 104.31955°W



NOTE: Under Colorado law, you must commence any legal action based upon any defect in this certificate within three years after defect is discovered. In no event, may any action based upon any defect in this survey be commenced more than ten years after date of this certificate shown hereon. (13-80105 C.R.S.)

## NOTES:

- All bearings are GRID based upon the Colorado State Plane Coordinate System, North Zone, NAD83(2011) derived from post-processed static GPS observations.
- Distances are at GROUND
- Vertical Datum is NAVD88 based upon GPS observations
- PDOP value equals 2.1.
- GPS operator: John Stoddard.
- Undisturbed ground elevation at wellhead = 4579.1'
- (M) Measured distance; (R) Record distance

## CERTIFICATE OF SURVEYOR

I, David A. Fehring of Lander, Wyoming hereby certify that this well location certificate was prepared from notes taken during an actual survey on DECEMBER 8, 2013, and that it correctly shows the drilling location of BONANZA CREEK ENERGY, INC., ANTELOPE A11-U41-33HNB as staked during said survey. This map does not represent a boundary survey or an improvement location plat and should not be used for the establishment of boundary lines.

### SURFACE LOCATION: (NAD83)

#### GEODETIC COORDINATES

LAT 40.35939°  
LONG 104.33694°

### STATE PLANE (CO-N NAD83)

N=1,375,892 ft  
E=3,324,110 ft

### TARGET #1: (NAD83)

#### GEODETIC COORDINATES

LAT 40.36252°  
LONG 104.33634°

### STATE PLANE (CO-N NAD83)

N=1,377,035 ft  
E=3,324,260 ft

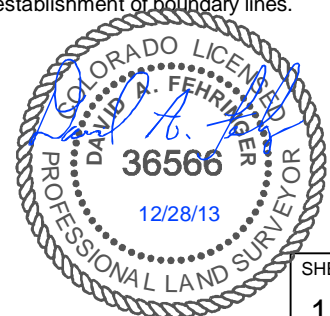
### BOTTOM HOLE LOCATION: (NAD83)

#### GEODETIC COORDINATES

LAT 40.36254°  
LONG 104.32124°

### STATE PLANE (CO-N NAD83)

N=1,377,096 ft  
E=3,328,470 ft

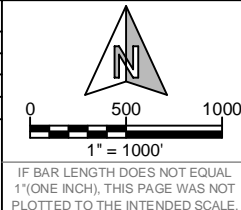


SHEET NO:

1 of 1



Drawn By: DAF  
Checked By: WJM  
Date: 12/28/13  
Revision:  
Date:  
Explanation:



## WELL LOCATION CERTIFICATE

ANTELOPE A11-U41-33HNB  
1471' FNL, 370' FWL  
SW $\frac{1}{4}$ NW $\frac{1}{4}$ , SECTION 33,  
T.5N., R.62W., 6th PM  
WELD COUNTY, COLORADO

