

# BONANZA CREEK OIL COMPANY

Location: COLORADO Slot: SLOT#01 ANTELOPE 11-41-33HNB (1471'FNL & 390'FWL,SEC.33)  
Field: WELD COUNTY Well: ANTELOPE 11-41-33HNB  
Facility: SEC.33-T5N-R62W Wellbore: ANTELOPE 11-41-33HNB PWB

Plot reference wellpath is ANTELOPE 11-41-33HNB (REV-A.0) PWP

True vertical depths are referenced to RIG (RKB)	Grid System: NAD83 / Lambert Colorado SP, Northern Zone (501), US feet
Measured depths are referenced to RIG (RKB)	North Reference: True north
RIG (RKB) to Mean Sea Level: 4596 feet	Scale: True distance
Mean Sea Level to Mud line (At Slot: SLOT#01 ANTELOPE 11-41-33HNB (1471'FNL & 390'FWL,SEC.33)): 0 feet	Depths are in feet
Coordinates are in feet referenced to Slot	Created by: guenaler on 1/8/2014

## Location Information

Facility Name			Grid East (US ft)	Grid North (US ft)	Latitude	Longitude
SEC.33-T5N-R62W			3324131.293	1375892.189	40°21'33.804"N	104°20'12.696"W
Slot	Local N (ft)	Local E (ft)	Grid East (US ft)	Grid North (US ft)	Latitude	Longitude
SLOT#01 ANTELOPE 11-41-33HNB (1471'FNL & 390'FWL,SEC.33)	0.00	0.00	3324131.293	1375892.189	40°21'33.804"N	104°20'12.696"W
RIG (RKB) to Mud line (At Slot: SLOT#01 ANTELOPE 11-41-33HNB (1471'FNL & 390'FWL,SEC.33))			4596ft			
Mean Sea Level to Mud line (At Slot: SLOT#01 ANTELOPE 11-41-33HNB (1471'FNL & 390'FWL,SEC.33))			0ft			
RIG (RKB) to Mean Sea Level			4596ft			

## Well Profile Data

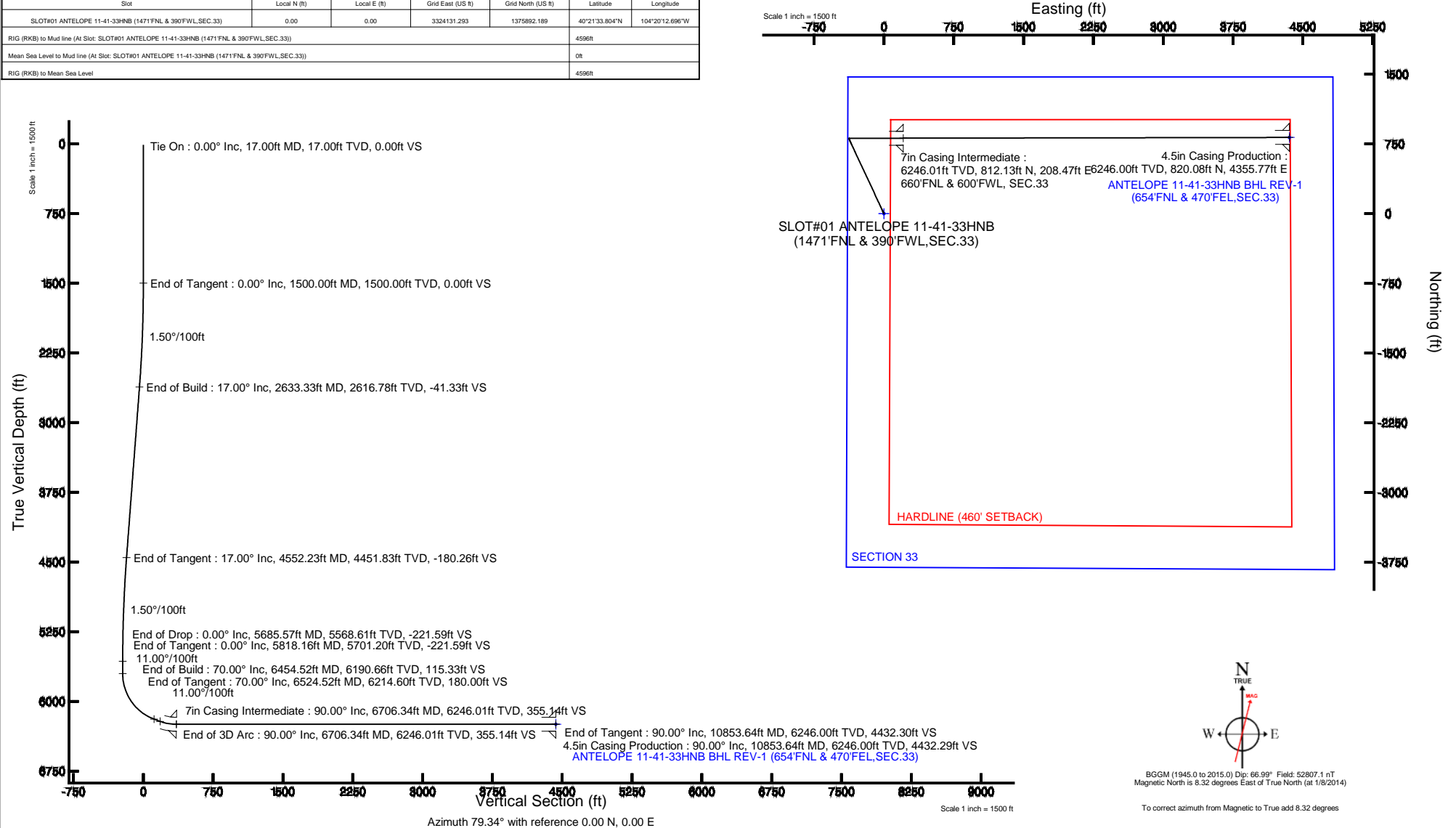
Design Comment	MD (ft)	Inc (°)	Az (°)	TVD (ft)	Local N (ft)	Local E (ft)	DLS (°/100ft)	VS (ft)
Tie On	17.00	0.000	335.000	17.00	0.00	0.00	0.00	0.00
End of Tangent	1500.00	0.000	335.000	1500.00	0.00	0.00	0.00	0.00
End of Build	2633.33	17.000	335.000	2616.78	151.27	-70.54	1.50	-41.33
End of Tangent	4552.23	17.000	335.000	4451.83	659.73	-307.64	0.00	-180.26
End of Drop	5685.57	0.000	89.890	5568.61	811.00	-378.18	1.50	-221.59
End of Tangent	5818.16	0.000	89.890	5701.20	811.00	-378.18	0.00	-221.59
End of Build	6454.52	70.000	89.890	6190.66	811.66	-35.45	11.00	115.33
End of Tangent	6524.52	70.000	89.890	6214.60	811.78	30.32	0.00	180.00
End of 3D Arc	6706.34	90.000	89.890	6246.01	812.13	208.47	11.00	355.14
End of Tangent	10853.64	90.000	89.890	6246.00	820.08	4355.77	0.00	4432.30

## Survey Program

Start MD (ft)	End MD (ft)	Tool	Model	Log Name/Comment	Wellbore
17.00	10853.64	NavitTrak	NavitTrak (Standard)		ANTELOPE 11-41-33HNB PWB

## Bottom Hole Location

MD (ft)	Inc (°)	Az (°)	TVD (ft)	Local N (ft)	Local E (ft)	Grid East (US ft)	Grid North (US ft)	Latitude	Longitude
10853.64	90.000	89.890	6246.00	820.08	4355.77	3328475.74	1376769.29	40°21'41.804"N	104°19'16.428"W





# Planned Wellpath Report

ANTELOPE 11-41-33HNB (REV-A.0) PWP

Page 1 of 7



REFERENCE WELLPATH IDENTIFICATION			
Operator	BONANZA CREEK OIL COMPANY	Slot	SLOT#01 ANTELOPE 11-41-33HNB (1471'FNL & 390'FWL,SEC.33)
Area	COLORADO	Well	ANTELOPE 11-41-33HNB
Field	WELD COUNTY	Wellbore	ANTELOPE 11-41-33HNB PWB
Facility	SEC.33-T5N-R62W		

REPORT SETUP INFORMATION			
Projection System	NAD83 / Lambert Colorado SP, Northern Zone (501), US feet	Software System	WellArchitect® 4.0.0
North Reference	True	User	Guenaler
Scale	0.999959	Report Generated	1/8/2014 at 2:33:26 PM
Convergence at slot	n/a	Database/Source file	WA_Denver/ANTELOPE_11-41-33HNB_PWB.xml

WELLPATH LOCATION						
	Local coordinates		Grid coordinates		Geographic coordinates	
	North[ft]	East[ft]	Easting[US ft]	Northing[US ft]	Latitude	Longitude
Slot Location	0.00	0.00	3324131.29	1375892.19	40°21'33.804"N	104°20'12.696"W
Facility Reference Pt			3324131.29	1375892.19	40°21'33.804"N	104°20'12.696"W
Field Reference Pt			3327718.19	1377782.99	40°21'52.020"N	104°19'26.040"W

WELLPATH DATUM			
Calculation method	Minimum curvature	RIG (RKB) to Facility Vertical Datum	4596.00ft
Horizontal Reference Pt	Slot	RIG (RKB) to Mean Sea Level	4596.00ft
Vertical Reference Pt	RIG (RKB)	RIG (RKB) to Mud Line at Slot (SLOT#01 ANTELOPE 11-41-33HNB (1471'FNL & 390'FWL,SEC.33))	4596.00ft
MD Reference Pt	RIG (RKB)	Section Origin	N 0.00, E 0.00 ft
Field Vertical Reference	Mean Sea Level	Section Azimuth	79.34°



# Planned Wellpath Report

ANTELOPE 11-41-33HNB (REV-A.0) PWP

Page 2 of 7



REFERENCE WELLPATH IDENTIFICATION			
Operator	BONANZA CREEK OIL COMPANY	Slot	SLOT#01 ANTELOPE 11-41-33HNB (1471'FNL & 390'FWL,SEC.33)
Area	COLORADO	Well	ANTELOPE 11-41-33HNB
Field	WELD COUNTY	Wellbore	ANTELOPE 11-41-33HNB PWB
Facility	SEC.33-T5N-R62W		

## WELLPATH DATA (119 stations) † = interpolated/extrapolated station

MD [ft]	Inclination [°]	Azimuth [°]	TVD [ft]	Vert Sect [ft]	North [ft]	East [ft]	Latitude	Longitude	DLS [°/100ft]	Comments
0.00†	0.000	335.000	0.00	0.00	0.00	0.00	40°21'33.804"N	104°20'12.696"W	0.00	
17.00	0.000	335.000	17.00	0.00	0.00	0.00	40°21'33.804"N	104°20'12.696"W	0.00	Tie On
117.00†	0.000	335.000	117.00	0.00	0.00	0.00	40°21'33.804"N	104°20'12.696"W	0.00	
217.00†	0.000	335.000	217.00	0.00	0.00	0.00	40°21'33.804"N	104°20'12.696"W	0.00	
317.00†	0.000	335.000	317.00	0.00	0.00	0.00	40°21'33.804"N	104°20'12.696"W	0.00	
417.00†	0.000	335.000	417.00	0.00	0.00	0.00	40°21'33.804"N	104°20'12.696"W	0.00	
517.00†	0.000	335.000	517.00	0.00	0.00	0.00	40°21'33.804"N	104°20'12.696"W	0.00	
617.00†	0.000	335.000	617.00	0.00	0.00	0.00	40°21'33.804"N	104°20'12.696"W	0.00	
717.00†	0.000	335.000	717.00	0.00	0.00	0.00	40°21'33.804"N	104°20'12.696"W	0.00	
817.00†	0.000	335.000	817.00	0.00	0.00	0.00	40°21'33.804"N	104°20'12.696"W	0.00	
917.00†	0.000	335.000	917.00	0.00	0.00	0.00	40°21'33.804"N	104°20'12.696"W	0.00	
1017.00†	0.000	335.000	1017.00	0.00	0.00	0.00	40°21'33.804"N	104°20'12.696"W	0.00	
1117.00†	0.000	335.000	1117.00	0.00	0.00	0.00	40°21'33.804"N	104°20'12.696"W	0.00	
1217.00†	0.000	335.000	1217.00	0.00	0.00	0.00	40°21'33.804"N	104°20'12.696"W	0.00	
1317.00†	0.000	335.000	1317.00	0.00	0.00	0.00	40°21'33.804"N	104°20'12.696"W	0.00	
1417.00†	0.000	335.000	1417.00	0.00	0.00	0.00	40°21'33.804"N	104°20'12.696"W	0.00	
1500.00	0.000	335.000	1500.00	0.00	0.00	0.00	40°21'33.804"N	104°20'12.696"W	0.00	End of Tangent
1517.00†	0.255	335.000	1517.00	-0.01	0.03	-0.02	40°21'33.804"N	104°20'12.696"W	1.50	
1617.00†	1.755	335.000	1616.98	-0.44	1.62	-0.76	40°21'33.820"N	104°20'12.706"W	1.50	
1717.00†	3.255	335.000	1716.88	-1.53	5.58	-2.60	40°21'33.859"N	104°20'12.730"W	1.50	
1817.00†	4.755	335.000	1816.64	-3.26	11.91	-5.56	40°21'33.922"N	104°20'12.768"W	1.50	
1917.00†	6.255	335.000	1916.17	-5.63	20.61	-9.61	40°21'34.008"N	104°20'12.820"W	1.50	
2017.00†	7.755	335.000	2015.42	-8.65	31.66	-14.76	40°21'34.117"N	104°20'12.887"W	1.50	
2117.00†	9.255	335.000	2114.32	-12.31	45.07	-21.01	40°21'34.249"N	104°20'12.967"W	1.50	
2217.00†	10.755	335.000	2212.80	-16.62	60.81	-28.36	40°21'34.405"N	104°20'13.062"W	1.50	
2317.00†	12.255	335.000	2310.78	-21.55	78.89	-36.79	40°21'34.584"N	104°20'13.171"W	1.50	
2417.00†	13.755	335.000	2408.22	-27.13	99.28	-46.30	40°21'34.785"N	104°20'13.294"W	1.50	
2517.00†	15.255	335.000	2505.03	-33.33	121.98	-56.88	40°21'35.009"N	104°20'13.431"W	1.50	
2617.00†	16.755	335.000	2601.15	-40.16	146.97	-68.53	40°21'35.256"N	104°20'13.581"W	1.50	
2633.33	17.000	335.000	2616.78	-41.33	151.27	-70.54	40°21'35.299"N	104°20'13.607"W	1.50	End of Build



# Planned Wellpath Report

ANTELOPE 11-41-33HNB (REV-A.0) PWP

Page 3 of 7



REFERENCE WELLPATH IDENTIFICATION			
Operator	BONANZA CREEK OIL COMPANY	Slot	SLOT#01 ANTELOPE 11-41-33HNB (1471'FNL & 390'FWL,SEC.33)
Area	COLORADO	Well	ANTELOPE 11-41-33HNB
Field	WELD COUNTY	Wellbore	ANTELOPE 11-41-33HNB PWB
Facility	SEC.33-T5N-R62W		

WELLPATH DATA (119 stations) † = interpolated/extrapolated station										
MD [ft]	Inclination [°]	Azimuth [°]	TVD [ft]	Vert Sect [ft]	North [ft]	East [ft]	Latitude	Longitude	DLS [°/100ft]	Comments
2717.00†	17.000	335.000	2696.79	-47.39	173.44	-80.87	40°21'35.518"N	104°20'13.741"W	0.00	
2817.00†	17.000	335.000	2792.42	-54.63	199.93	-93.23	40°21'35.780"N	104°20'13.900"W	0.00	
2917.00†	17.000	335.000	2888.05	-61.87	226.43	-105.59	40°21'36.042"N	104°20'14.060"W	0.00	
3017.00†	17.000	335.000	2983.68	-69.11	252.93	-117.94	40°21'36.303"N	104°20'14.220"W	0.00	
3117.00†	17.000	335.000	3079.31	-76.35	279.43	-130.30	40°21'36.565"N	104°20'14.379"W	0.00	
3217.00†	17.000	335.000	3174.94	-83.59	305.93	-142.66	40°21'36.827"N	104°20'14.539"W	0.00	
3317.00†	17.000	335.000	3270.57	-90.83	332.42	-155.01	40°21'37.089"N	104°20'14.698"W	0.00	
3417.00†	17.000	335.000	3366.20	-98.07	358.92	-167.37	40°21'37.351"N	104°20'14.858"W	0.00	
3517.00†	17.000	335.000	3461.83	-105.31	385.42	-179.72	40°21'37.613"N	104°20'15.018"W	0.00	
3617.00†	17.000	335.000	3557.46	-112.55	411.92	-192.08	40°21'37.874"N	104°20'15.177"W	0.00	
3717.00†	17.000	335.000	3653.09	-119.79	438.41	-204.44	40°21'38.136"N	104°20'15.337"W	0.00	
3817.00†	17.000	335.000	3748.72	-127.03	464.91	-216.79	40°21'38.398"N	104°20'15.496"W	0.00	
3917.00†	17.000	335.000	3844.35	-134.27	491.41	-229.15	40°21'38.660"N	104°20'15.656"W	0.00	
4017.00†	17.000	335.000	3939.98	-141.51	517.91	-241.50	40°21'38.922"N	104°20'15.816"W	0.00	
4117.00†	17.000	335.000	4035.62	-148.75	544.41	-253.86	40°21'39.184"N	104°20'15.975"W	0.00	
4217.00†	17.000	335.000	4131.25	-155.99	570.90	-266.22	40°21'39.445"N	104°20'16.135"W	0.00	
4317.00†	17.000	335.000	4226.88	-163.23	597.40	-278.57	40°21'39.707"N	104°20'16.295"W	0.00	
4417.00†	17.000	335.000	4322.51	-170.47	623.90	-290.93	40°21'39.969"N	104°20'16.454"W	0.00	
4517.00†	17.000	335.000	4418.14	-177.71	650.40	-303.29	40°21'40.231"N	104°20'16.614"W	0.00	
4552.23	17.000	335.000	4451.83	-180.26	659.73	-307.64	40°21'40.323"N	104°20'16.670"W	0.00	End of Tangent
4617.00†	16.029	335.000	4513.93	-184.82	676.42	-315.42	40°21'40.488"N	104°20'16.771"W	1.50	
4717.00†	14.529	335.000	4610.39	-191.34	700.30	-326.56	40°21'40.724"N	104°20'16.914"W	1.50	
4817.00†	13.029	335.000	4707.51	-197.24	721.89	-336.62	40°21'40.937"N	104°20'17.044"W	1.50	
4917.00†	11.529	335.000	4805.22	-202.51	741.16	-345.61	40°21'41.128"N	104°20'17.161"W	1.50	
5017.00†	10.029	335.000	4903.45	-207.14	758.11	-353.51	40°21'41.295"N	104°20'17.263"W	1.50	
5117.00†	8.529	335.000	5002.14	-211.13	772.72	-360.33	40°21'41.440"N	104°20'17.351"W	1.50	
5217.00†	7.029	335.000	5101.22	-214.48	784.99	-366.04	40°21'41.561"N	104°20'17.425"W	1.50	
5317.00†	5.529	335.000	5200.61	-217.19	794.90	-370.67	40°21'41.659"N	104°20'17.484"W	1.50	
5417.00†	4.029	335.000	5300.26	-219.25	802.45	-374.19	40°21'41.734"N	104°20'17.530"W	1.50	
5517.00†	2.529	335.000	5400.10	-220.67	807.63	-376.60	40°21'41.785"N	104°20'17.561"W	1.50	



# Planned Wellpath Report

## ANTELOPE 11-41-33HNB (REV-A.0) PWP

Page 4 of 7



REFERENCE WELLPATH IDENTIFICATION			
Operator	BONANZA CREEK OIL COMPANY	Slot	SLOT#01 ANTELOPE 11-41-33HNB (1471'FNL & 390'FWL,SEC.33)
Area	COLORADO	Well	ANTELOPE 11-41-33HNB
Field	WELD COUNTY	Wellbore	ANTELOPE 11-41-33HNB PWB
Facility	SEC.33-T5N-R62W		

WELLPATH DATA (119 stations) † = interpolated/extrapolated station										
MD [ft]	Inclination [°]	Azimuth [°]	TVD [ft]	Vert Sect [ft]	North [ft]	East [ft]	Latitude	Longitude	DLS [°/100ft]	Comments
5617.00†	1.029	335.000	5500.05	-221.44	810.44	-377.92	40°21'41.813"N	104°20'17.578"W	1.50	
5685.57	0.000	89.890	5568.61	-221.59	811.00	-378.18	40°21'41.818"N	104°20'17.581"W	1.50	End of Drop
5717.00†	0.000	89.890	5600.04	-221.59	811.00	-378.18	40°21'41.818"N	104°20'17.581"W	0.00	
5817.00†	0.000	89.890	5700.04	-221.59	811.00	-378.18	40°21'41.818"N	104°20'17.581"W	0.00	
5818.16	0.000	89.890	5701.20	-221.59	811.00	-378.18	40°21'41.818"N	104°20'17.581"W	0.00	End of Tangent
5917.00†	10.873	89.890	5799.45	-212.40	811.02	-368.83	40°21'41.818"N	104°20'17.460"W	11.00	
6017.00†	21.873	89.890	5895.25	-184.73	811.07	-340.68	40°21'41.819"N	104°20'17.097"W	11.00	
6117.00†	32.873	89.890	5983.91	-139.60	811.16	-294.77	40°21'41.820"N	104°20'16.504"W	11.00	
6217.00†	43.873	89.890	6062.19	-78.67	811.28	-232.79	40°21'41.821"N	104°20'15.703"W	11.00	
6317.00†	54.873	89.890	6127.21	-4.17	811.42	-157.01	40°21'41.822"N	104°20'14.724"W	11.00	
6417.00†	65.873	89.890	6176.57	81.16	811.59	-70.22	40°21'41.824"N	104°20'13.603"W	11.00	
6454.52	70.000	89.890	6190.66	115.33	811.66	-35.45	40°21'41.825"N	104°20'13.154"W	11.00	End of Build
6517.00†	70.000	89.890	6212.03	173.05	811.77	23.26	40°21'41.826"N	104°20'12.396"W	0.00	
6524.52	70.000	89.890	6214.60	180.00	811.78	30.32	40°21'41.826"N	104°20'12.304"W	0.00	End of Tangent
6617.00†	80.173	89.890	6238.37	267.74	811.96	119.57	40°21'41.828"N	104°20'11.151"W	11.00	
6706.34	90.000	89.890	6246.01	355.14	812.13	208.47	40°21'41.829"N	104°20'10.003"W	11.00	End of 3D Arc
6717.00†	90.000	89.890	6246.01	365.62	812.15	219.13	40°21'41.829"N	104°20'09.865"W	0.00	
6817.00†	90.000	89.890	6246.01	463.92	812.34	319.13	40°21'41.831"N	104°20'08.573"W	0.00	
6917.00†	90.000	89.890	6246.01	562.23	812.53	419.13	40°21'41.833"N	104°20'07.282"W	0.00	
7017.00†	90.000	89.890	6246.01	660.54	812.72	519.13	40°21'41.835"N	104°20'05.990"W	0.00	
7117.00†	90.000	89.890	6246.01	758.85	812.91	619.13	40°21'41.837"N	104°20'04.698"W	0.00	
7217.00†	90.000	89.890	6246.01	857.16	813.11	719.13	40°21'41.839"N	104°20'03.406"W	0.00	
7317.00†	90.000	89.890	6246.01	955.47	813.30	819.13	40°21'41.841"N	104°20'02.114"W	0.00	
7417.00†	90.000	89.890	6246.01	1053.78	813.49	919.13	40°21'41.842"N	104°20'00.823"W	0.00	
7517.00†	90.000	89.890	6246.01	1152.09	813.68	1019.13	40°21'41.844"N	104°19'59.531"W	0.00	
7617.00†	90.000	89.890	6246.01	1250.39	813.87	1119.13	40°21'41.846"N	104°19'58.239"W	0.00	
7717.00†	90.000	89.890	6246.01	1348.70	814.06	1219.13	40°21'41.848"N	104°19'56.947"W	0.00	
7817.00†	90.000	89.890	6246.01	1447.01	814.26	1319.13	40°21'41.850"N	104°19'55.655"W	0.00	
7917.00†	90.000	89.890	6246.01	1545.32	814.45	1419.13	40°21'41.852"N	104°19'54.364"W	0.00	
8017.00†	90.000	89.890	6246.01	1643.63	814.64	1519.13	40°21'41.854"N	104°19'53.072"W	0.00	



# Planned Wellpath Report

## ANTELOPE 11-41-33HNB (REV-A.0) PWP

Page 5 of 7



### REFERENCE WELLPATH IDENTIFICATION

Operator	BONANZA CREEK OIL COMPANY	Slot	SLOT#01 ANTELOPE 11-41-33HNB (1471'FNL & 390'FWL,SEC.33)
Area	COLORADO	Well	ANTELOPE 11-41-33HNB
Field	WELD COUNTY	Wellbore	ANTELOPE 11-41-33HNB PWB
Facility	SEC.33-T5N-R62W		

### WELLPATH DATA (119 stations) † = interpolated/extrapolated station

MD [ft]	Inclination [°]	Azimuth [°]	TVD [ft]	Vert Sect [ft]	North [ft]	East [ft]	Latitude	Longitude	DLS [°/100ft]	Comments
8117.00†	90.000	89.890	6246.01	1741.94	814.83	1619.13	40°21'41.855"N	104°19'51.780"W	0.00	
8217.00†	90.000	89.890	6246.01	1840.25	815.02	1719.13	40°21'41.857"N	104°19'50.488"W	0.00	
8317.00†	90.000	89.890	6246.01	1938.56	815.22	1819.13	40°21'41.859"N	104°19'49.196"W	0.00	
8417.00†	90.000	89.890	6246.01	2036.86	815.41	1919.13	40°21'41.861"N	104°19'47.905"W	0.00	
8517.00†	90.000	89.890	6246.01	2135.17	815.60	2019.13	40°21'41.863"N	104°19'46.613"W	0.00	
8617.00†	90.000	89.890	6246.01	2233.48	815.79	2119.13	40°21'41.865"N	104°19'45.321"W	0.00	
8717.00†	90.000	89.890	6246.01	2331.79	815.98	2219.13	40°21'41.866"N	104°19'44.029"W	0.00	
8817.00†	90.000	89.890	6246.01	2430.10	816.17	2319.13	40°21'41.868"N	104°19'42.737"W	0.00	
8917.00†	90.000	89.890	6246.01	2528.41	816.37	2419.13	40°21'41.870"N	104°19'41.446"W	0.00	
9017.00†	90.000	89.890	6246.01	2626.72	816.56	2519.13	40°21'41.872"N	104°19'40.154"W	0.00	
9117.00†	90.000	89.890	6246.00	2725.02	816.75	2619.13	40°21'41.874"N	104°19'38.862"W	0.00	
9217.00†	90.000	89.890	6246.00	2823.33	816.94	2719.13	40°21'41.875"N	104°19'37.570"W	0.00	
9317.00†	90.000	89.890	6246.00	2921.64	817.13	2819.13	40°21'41.877"N	104°19'36.278"W	0.00	
9417.00†	90.000	89.890	6246.00	3019.95	817.33	2919.13	40°21'41.879"N	104°19'34.987"W	0.00	
9517.00†	90.000	89.890	6246.00	3118.26	817.52	3019.13	40°21'41.881"N	104°19'33.695"W	0.00	
9617.00†	90.000	89.890	6246.00	3216.57	817.71	3119.13	40°21'41.882"N	104°19'32.403"W	0.00	
9717.00†	90.000	89.890	6246.00	3314.88	817.90	3219.13	40°21'41.884"N	104°19'31.111"W	0.00	
9817.00†	90.000	89.890	6246.00	3413.19	818.09	3319.13	40°21'41.886"N	104°19'29.819"W	0.00	
9917.00†	90.000	89.890	6246.00	3511.49	818.28	3419.13	40°21'41.888"N	104°19'28.528"W	0.00	
10017.00†	90.000	89.890	6246.00	3609.80	818.48	3519.13	40°21'41.889"N	104°19'27.236"W	0.00	
10117.00†	90.000	89.890	6246.00	3708.11	818.67	3619.13	40°21'41.891"N	104°19'25.944"W	0.00	
10217.00†	90.000	89.890	6246.00	3806.42	818.86	3719.13	40°21'41.893"N	104°19'24.652"W	0.00	
10317.00†	90.000	89.890	6246.00	3904.73	819.05	3819.13	40°21'41.895"N	104°19'23.360"W	0.00	
10417.00†	90.000	89.890	6246.00	4003.04	819.24	3919.13	40°21'41.896"N	104°19'22.069"W	0.00	
10517.00†	90.000	89.890	6246.00	4101.35	819.43	4019.13	40°21'41.898"N	104°19'20.777"W	0.00	
10617.00†	90.000	89.890	6246.00	4199.66	819.63	4119.13	40°21'41.900"N	104°19'19.485"W	0.00	
10717.00†	90.000	89.890	6246.00	4297.96	819.82	4219.13	40°21'41.902"N	104°19'18.193"W	0.00	
10817.00†	90.000	89.890	6246.00	4396.27	820.01	4319.13	40°21'41.903"N	104°19'16.901"W	0.00	
10853.64	90.000	89.890	6246.00 <sup>1</sup>	4432.30	820.08	4355.77	40°21'41.904"N	104°19'16.428"W	0.00	End of Tangent



# Planned Wellpath Report

ANTELOPE 11-41-33HNB (REV-A.0) PWP

Page 6 of 7



## REFERENCE WELLPATH IDENTIFICATION

Operator	BONANZA CREEK OIL COMPANY	Slot	SLOT#01 ANTELOPE 11-41-33HNB (1471'FNL & 390'FWL,SEC.33)
Area	COLORADO	Well	ANTELOPE 11-41-33HNB
Field	WELD COUNTY	Wellbore	ANTELOPE 11-41-33HNB PWB
Facility	SEC.33-T5N-R62W		

## HOLE & CASING SECTIONS -

Ref Wellbore: ANTELOPE 11-41-33HNB PWB Ref Wellpath: ANTELOPE 11-41-33HNB (REV-A.0) PWP

String/Diameter	Start MD [ft]	End MD [ft]	Interval [ft]	Start TVD [ft]	End TVD [ft]	Start N/S [ft]	Start E/W [ft]	End N/S [ft]	End E/W [ft]
7in Casing Intermediate	17.00	6706.34	6689.34	17.00	6246.01	0.00	0.00	812.13	208.47
4.5in Casing Production	17.00	6671.34	6654.34	17.00	6244.84	0.00	0.00	812.06	173.50

## TARGETS

Name	MD [ft]	TVD [ft]	North [ft]	East [ft]	Grid East [US ft]	Grid North [US ft]	Latitude	Longitude	Shape
ANTELOPE 11-41-33HNB SECTION 33		0.00	0.00	0.00	3324131.29	1375892.19	40°21'33.804"N	104°20'12.696"W	polygon
1) ANTELOPE 11-41-33HNB BHL REV-1 (654'FNL & 470'FEL,SEC.33)	10853.64	6246.00	820.08	4355.77	3328475.74	1376769.29	40°21'41.904"N	104°19'16.428"W	point
ANTELOPE 11-41-33HNB HARDLINE (460' SETBACK)		6246.00	0.00	0.00	3324131.29	1375892.19	40°21'33.804"N	104°20'12.696"W	polygon

## SURVEY PROGRAM - Ref Wellbore: ANTELOPE 11-41-33HNB PWB Ref Wellpath: ANTELOPE 11-41-33HNB (REV-A.0) PWP

Start MD [ft]	End MD [ft]	Positional Uncertainty Model	Log Name/Comment	Wellbore
17.00	10853.64	NaviTrak (Standard)		ANTELOPE 11-41-33HNB PWB



**Planned Wellpath Report**  
**ANTELOPE 11-41-33HNB (REV-A.0) PWP**  
Page 7 of 7



REFERENCE WELLPATH IDENTIFICATION			
Operator	BONANZA CREEK OIL COMPANY	Slot	SLOT#01 ANTELOPE 11-41-33HNB (1471'FNL & 390'FWL,SEC.33)
Area	COLORADO	Well	ANTELOPE 11-41-33HNB
Field	WELD COUNTY	Wellbore	ANTELOPE 11-41-33HNB PWB
Facility	SEC.33-T5N-R62W		

DESIGN COMMENTS				
MD [ft]	Inclination [°]	Azimuth [°]	TVD [ft]	Comment
17.00	0.000	335.000	17.00	Tie On
1500.00	0.000	335.000	1500.00	End of Tangent
2633.33	17.000	335.000	2616.78	End of Build
4552.23	17.000	335.000	4451.83	End of Tangent
5685.57	0.000	89.890	5568.61	End of Drop
5818.16	0.000	89.890	5701.20	End of Tangent
6454.52	70.000	89.890	6190.66	End of Build
6524.52	70.000	89.890	6214.60	End of Tangent
6706.34	90.000	89.890	6246.01	End of 3D Arc
10853.64	90.000	89.890	6246.00	End of Tangent