

The Road to Excellence Starts with Safety

Sold To #: 300721	Ship To #: 3111181	Quote #:	Sales Order #: 900813510
Customer: WPX ENERGY ROCKY MOUNTAIN LLC-EBUS	Customer Rep: Brunk, Mike		
Well Name: RWF	Well #: 321-35	API/UWI #: 05-045-21846	
Field: GARND VAILLEY	City (SAP): RIFLE	County/Parish: Garfield	State: Colorado
Lat: N 39.486 deg. OR N 39 deg. 29 min. 9.103 secs.	Long: W 107.861 deg. OR W -108 deg. 8 min. 21.883 secs.		
Contractor: CYCLONE 17	Rig/Platform Name/Num: 17		
Job Purpose: Cement Surface Casing			
Well Type: Development Well	Job Type: Cement Surface Casing		
Sales Person: MAYO, MARK	Srv Supervisor: KEANE, JOHN	MBU ID Emp #: 486519	

Job Personnel

HES Emp Name	Exp Hrs	Emp #	HES Emp Name	Exp Hrs	Emp #	HES Emp Name	Exp Hrs	Emp #
ANDERSON, ADAM S	0.0	456683	KEANE, JOHN Donovan	0.0	486519	WARDELL, STEVEN John	0.0	549567

Equipment

HES Unit #	Distance-1 way	HES Unit #	Distance-1 way	HES Unit #	Distance-1 way	HES Unit #	Distance-1 way
10296152C	60 mile	10565341	60 mile	10995025	60 mile	11259881	60 mile
11808847	60 mile						

Job Hours

Date	On Location Hours	Operating Hours	Date	On Location Hours	Operating Hours	Date	On Location Hours	Operating Hours

TOTAL Total is the sum of each column separately

Job

Formation Name	Formation Depth (MD)	Top	Bottom	Job Type	Job depth MD	Job Depth TVD	Water Depth	Perforation Depth (MD)	From	To
				BHST	1170.7 ft	1170.7 ft				

Job Times

Date	Time	Time Zone
11 - Oct - 2013	00:30	MST
11 - Oct - 2013	04:00	MST
11 - Oct - 2013	08:45	MST
11 - Oct - 2013	15:00	MST
11 - Oct - 2013	16:20	MST

Well Data

Description	New / Used	Max pressure psig	Size in	ID in	Weight lbm/ft	Thread	Grade	Top MD ft	Bottom MD ft	Top TVD ft	Bottom TVD ft

Tools and Accessories

Type	Size	Qty	Make	Depth	Type	Size	Qty	Make	Depth	Type	Size	Qty	Make
Guide Shoe					Packer					Top Plug			
Float Shoe					Bridge Plug					Bottom Plug			
Float Collar					Retainer					SSR plug set			
Insert Float										Plug Container			
Stage Tool										Centralizers			

Miscellaneous Materials

Gelling Agt	Conc	Surfactant	Conc	Acid Type	Qty	Conc	%
Treatment Fld	Conc	Inhibitor	Conc	Sand Type	Size	Qty	

Fluid Data

Stage/Plug #: 1	Fluid #	Stage Type	Fluid Name	Qty	Qty uom	Mixing Density lbm/gal	Yield ft3/sk	Mix Fluid Gal/sk	Rate bbl/min	Total Mix Fluid Gal/sk

Stage/Plug #: 1	Fluid #	Stage Type	Fluid Name	Qty	Qty uom	Mixing Density uom	Yield uom	Mix Fluid uom	Rate uom	Total Mix Fluid uom

Stage/Plug #: 1									
Fluid #	Stage Type	Fluid Name	Qty	Qty uom	Mixing Density lbm/gal	Yield ft ³ /sk	Mix Fluid Gal/sk	Rate bbl/min	Total Mix Fluid Gal/sk
1	Fresh Water Spacer		20.00	bbl	.	.0	.0	.0	
2	VariCem GJI Lead Cement	VARICEM (TM) CEMENT (452009)	170.0	sacks	12.3	2.38	13.75		13.75
	13.75 Gal	FRESH WATER							
3	VariCem GJI Tail Cement	VERSACEM (TM) SYSTEM (452010)	160.0	sacks	12.8	2.11	11.75		11.75
	11.75 Gal	FRESH WATER							
4	Fresh Water Displacement		88.00	bbl	.	.0	.0	.0	
Calculated Values		Pressures		Volumes					
Displacement		Shut In: Instant		Lost Returns		Cement Slurry		Pad	
Top Of Cement		5 Min		Cement Returns		Actual Displacement		Treatment	
Frac Gradient		15 Min		Spacers		Load and Breakdown		Total Job	
Rates									
Circulating		Mixing		Displacement		Avg. Job			
Cement Left In Pipe	Amount	0 ft	Reason	Shoe Joint					
Frac Ring # 1 @	ID	Frac ring # 2 @	ID	Frac Ring # 3 @	ID	Frac Ring # 4 @	ID		
The Information Stated Herein Is Correct				Customer Representative Signature					

The Road to Excellence Starts with Safety

Sold To #: 300721	Ship To #: 3111181	Quote #:	Sales Order #: 900813510
Customer: WPX ENERGY ROCKY MOUNTAIN LLC-EBUS	Customer Rep: Brunk, Mike		
Well Name: RWF	Well #: 321-35	API/UWI #: 05-045-21846	
Field: GARND VAILLEY	City (SAP): RIFLE	County/Parish: Garfield	State: Colorado
Legal Description:			
Lat: N 39.486 deg. OR N 39 deg. 29 min. 9.103 secs.		Long: W 107.861 deg. OR W -108 deg. 8 min. 21.883 secs.	
Contractor: CYCLONE 17	Rig/Platform Name/Num: 17		
Job Purpose: Cement Surface Casing			Ticket Amount:
Well Type: Development Well	Job Type: Cement Surface Casing		
Sales Person: MAYO, MARK	Srv Supervisor: KEANE, JOHN	MBU ID Emp #: 486519	

Activity Description	Date/Time	Cht #	Rate bbl/ min	Volume bbl		Pressure psig		Comments
				Stage	Total	Tubing	Casing	
Call Out	10/11/2013 00:30							
Pre-Convoy Safety Meeting	10/11/2013 02:40							WITH HES
Arrive At Loc	10/11/2013 04:10							RIG RUNNING CASING UPON HES ARRIVAL
Assessment Of Location Safety Meeting	10/11/2013 04:20							WITH HES
Pre-Rig Up Safety Meeting	10/11/2013 07:15							WITH HES
Rig-Up Equipment	10/11/2013 08:00							
Pre-Job Safety Meeting	10/11/2013 08:30							WITH HES, WPX, AND CYCLONE 17
Start Job	10/11/2013 08:45							TP 1170.72 FT, TD 1190 FT, SHOE 45.82 FT, HOLE 13.5 IN, CSG 9.625 IN 32.3 LB/FT H-40, MWT 8.75 LB/GAL, RIG CIRCULATING AT 11 BBL/MIN, PV/YP 24/17
Pump Water	10/11/2013 08:50		2	2				FILL LINES
Test Lines	10/11/2013 08:52							LOW TEST AT 1325 PSI, HIGH TEST AT 3240 PSI, PRESSURE HOLDING
Pump Spacer	10/11/2013 09:00		4	20		130.0		FRESH WATE
Pump Lead Cement	10/11/2013 09:11		8	72.1		380.0		MIXED AT 12.3 LB/GAL, 170 SKS, 2.38 FT3/SK, 13.75 GAL/SK, DENSITY VERIFIED USING PRESSURIZED MUD SCALES

Activity Description	Date/Time	Cht #	Rate bbl/min	Volume bbl		Pressure psig		Comments
				Stage	Total	Tubing	Casing	
Pump Tail Cement	10/11/2013 09:21		8	60.1		395.0		MIXED AT 12.8 LB/GAL, 160 SKS, 2.11 FT3/SK, 11.75 GAL/SK, DENSITY VERIFIED USING PRESSURIZED MUD SCALES
Shutdown	10/11/2013 09:30							
Drop Plug	10/11/2013 09:32							PLUG LAUNCHED
Pump Displacement	10/11/2013 09:33		10	60			430.0	FRESH WATER
Slow Rate	10/11/2013 09:45		2	28.5			185.0	SLOWED AT 68 BBL AWAY ON DISPLACEMENT
Bump Plug	10/11/2013 09:59		2				240.0	PLUG BUMPED AT CALCULATED DISPLACEMENT
Check Floats	10/11/2013 10:01						840.0	FLOATS HOLDING, 1 BBL RETURNED TO THE TRUCK
Comment	10/11/2013 10:02							NO CEMENT CIRCULATED TO SURFACE, HES WAITING ON 250 SKS TOP OUT CEMENT
Comment	10/11/2013 14:00							250 SKS TOP OUT CEMENT ARRIVED ON LOCATION, HES RIGGED UP TO PUMP DOWN CONDUCTOR AND SURFACE CASING ANNULUS
Pump Cement	10/11/2013 14:18		2	22.6			13.0	MIXED AT 15.8 LB/GAL, 126 SKS, 1.15 FT3/SK, 5.01 GAL/SK, DENSITY VERIFIED USING PRESSURIZED MUD SCALES
Shutdown	10/11/2013 14:49						13.0	
Activity Description	Date/Time	Cht #	Rate bbl/min	Volume bbl		Pressure psig		Comments
				Stage	Total	Tubing	Casing	

HALLIBURTON

Cementing Job Log

End Job	10/11/2013 15:00							GOOD CIRCULATION THROUGHOUT THE JOB, PIPE WAS STATIC THROUGHOUT THE JOB, 1 ADD HOURS CHARGED, NO DERRICK CHARGE, RIG USED 80 LBS OF SUGAR, TOPPED OUT WELL USING 126 SKS OF G - NEAT CEMENT
Post-Job Safety Meeting (Pre Rig-Down)	10/11/2013 15:10							WITH HES
Rig-Down Equipment	10/11/2013 15:15							
Pre-Convoy Safety Meeting	10/11/2013 16:10							WITH HES
Crew Leave Location	10/11/2013 16:20							
Comment	10/11/2013 16:21							THANKS FOR USING HALLIBURTON, JOHN KEANE AND CREW

Sold To # : 300721

Ship To # :3111181

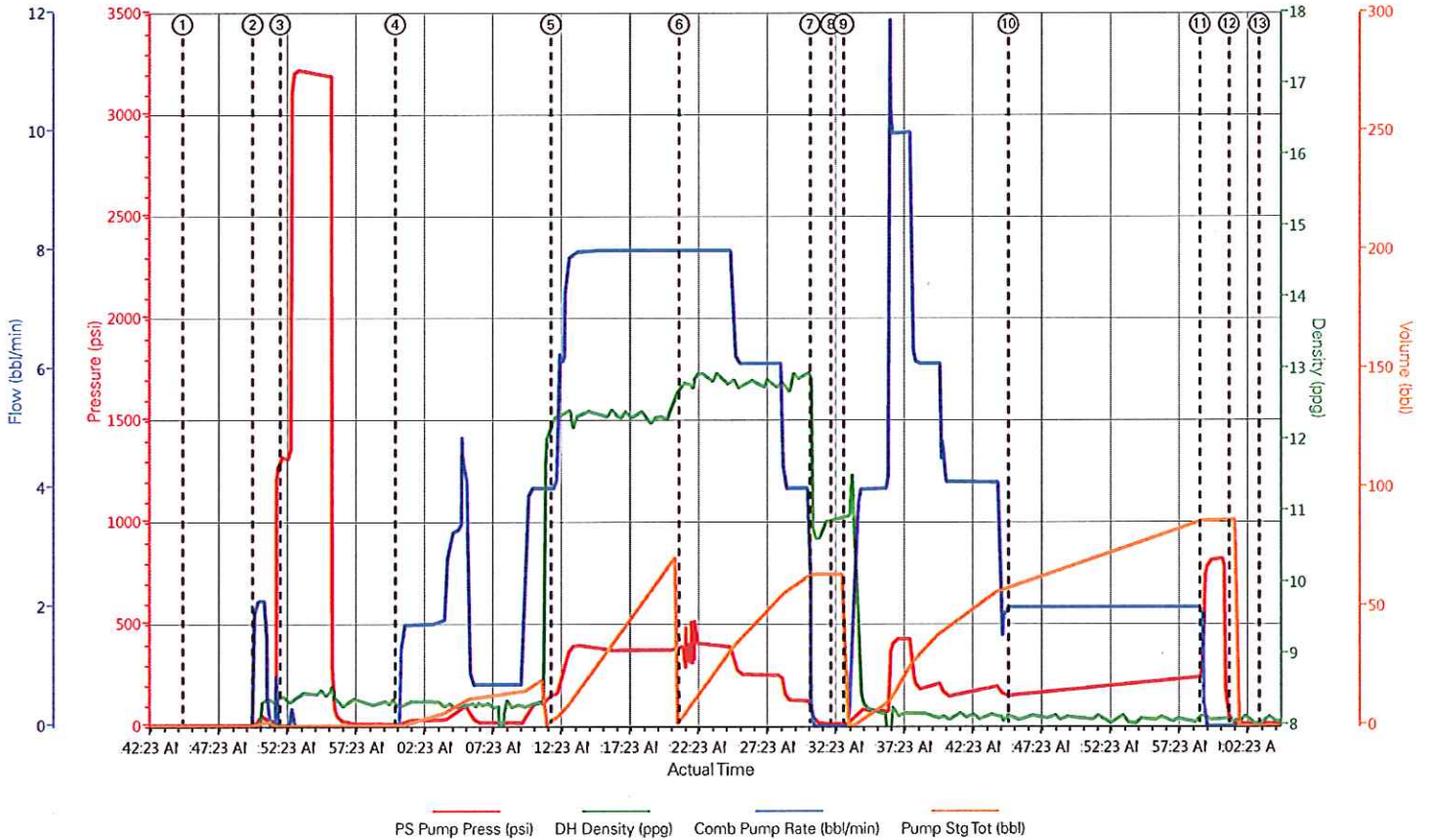
Quote # :

Sales Order # : 900813510

SUMMIT Version: 7.3.0106

Friday, January 10, 2014 01:43:00

WPX - RWF-321-35 - 9.625 IN SURFACE



① Start Job 4;7.67;0.0	④ Fresh Water Spacer 10;8.28;0.0.1	⑦ Shutdown 44;10.72;0.63.8	⑩ Slow Rate 151;8.13;2.59.2	⑬ End Job 12;8.1;0.0
② Fill Lines 10;7.63;2.1;0.4	⑤ Pump Lead Cement 155;12.29;4.3.1	⑧ Drop Plug 12;10.88;0.63.8	⑪ Bump Plug 522;8.15;1.9;86.6	
③ Test Lines 1323;8.4;0.0.1	⑥ Pump Tail Cement 390;12.82;8.4.1	⑨ Pump Displacement 12;10.94;0.0	⑫ Check Floats 21;8.08;0.86.6	

▼ **HALLIBURTON** | iCem® Service

Created: 2013-10-11 09:02:42, Version: 3.0.121

Edit

Customer: WPX ENERGY ROCKY MOUNTAIN LLC-
EBUS

Representative: MIKE BRUNK

Job Date: 10/11/2013 8:04:59 AM

Sales Order #: 900813510

Well: RWF-321-35

ELITE 9: ADAM ANDERSON / JOHN KEANE