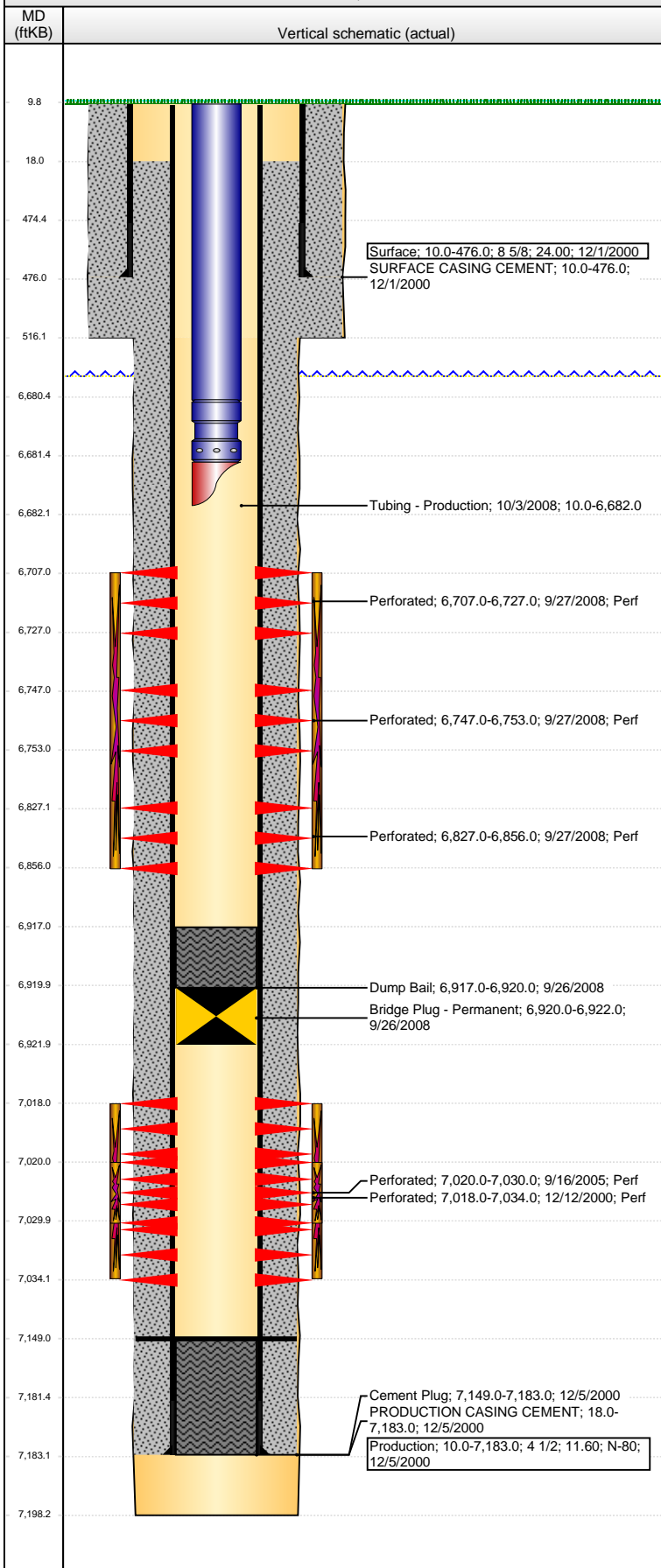


Well Name: ENZUP 21-41

VERTICAL - ORIGINAL HOLE, 1/22/2014 11:06:32 AM



Well Header

API 05-123-20039	Business Unit WATTENBERG	District 15	Well Config VERTICAL
Original KB Elevation (ft) 4,649.00	KB - GL / MSL (ftKB) 10.00	Spud Date 11/30/2000	P & A Date
Comment			

Directions To Well

Congressional Location

Quarter 1	Quarter 2	Quarter 3	Quarter 4	Section	Township	Twnshp N...	Range	Rng E/W Dir
	S2	NE	SE	21	5	N	65	W

Bottom Hole Location

North-South Distance (ft)	From N or S Line	East-West Distance (ft)	From E or W Line
---------------------------	------------------	-------------------------	------------------

Plug Back Total Depths

Date	Depth (ftKB)	Method	Com
12/4/2000	7,149.0	CASING TALLY	

Wellbore Sections

Section Des	Size (in)	Act Top, MD (ftKB)	Act Btm, MD (ftKB)
SURFACE	12 1/4	10.0	516.0
PRODUCTION	7 7/8	516.0	7,198.0

Zone Statuses

Zone Name	Status Date	Status	Job
CODELL	12/18/2000	PR	DRILLING/COMPLETION - ORIGINAL, 11/30/2000 00:00
CODELL	9/22/2005	PR	RE-FRAC, 9/14/2005 00:00
CODELL	9/26/2008	SI	RECOMPLETION, 9/25/2008 00:00
NIOBRARA	10/6/2008	PR	RECOMPLETION, 9/25/2008 00:00

Casing Strings

Surface, 476.0ftKB

Casing Description	Run Date	OD (in)	Wt/Len (l...)	Grade	Top, MD (ft...)	MD (ftKB)
Surface	12/1/2000	8 5/8	24.00		10.0	476.0

Production, 7,183.0ftKB

Casing Description	Run Date	OD (in)	Wt/Len (l...)	Grade	Top, MD (ft...)	MD (ftKB)
Production	12/5/2000	4 1/2	11.60	N-80	10.0	7,183.0

Cement

Description	Top Depth (ftKB)	Bottom Depth (ftKB)
SURFACE CASING CEMENT	10.0	476.0
Cement Plug	7,149.0	7,183.0
PRODUCTION CASING CEMENT	18.0	7,183.0
Dump Bail	6,917.0	6,920.0

Tubing Components

Item Des	OD (in)	Wt (lb/ft)	Grade	Jts	Len (ft)	Btm (ftKB)	Btm (TVD) (ftKB)
Tubing	2 3/8	4.70	J-55	215	6,670.50	6,680.5	
Seal Nipple	2 3/8			1	1.00	6,681.5	
Mule Shoe	2 3/8			1	0.50	6,682.0	

Perforation Data

Zone	Bnch/St g	Entered Shot Total	Top (ftKB)	Btm (ftKB)	Date
NIOBRARA, ORIGINAL HOLE	A	40	6,707.00	6,727.00	9/27/2008
NIOBRARA, ORIGINAL HOLE	B	24	6,747.00	6,753.00	9/27/2008
NIOBRARA, ORIGINAL HOLE	B	116	6,827.00	6,856.00	9/27/2008
CODELL, ORIGINAL HOLE		64	7,018.00	7,034.00	12/12/2000
CODELL, ORIGINAL HOLE		40	7,020.00	7,030.00	9/16/2005

Stimulations & Treatments

Date	Zone	Primary Job Type
12/14/2000	CODELL, ORIGINAL HOLE	DRILLING/COMPLETION - ORIGINAL
Technical Result	Tech Result Details	Tech Result Note

Comment

Well Name: ENZUP 21-41

VERTICAL - ORIGINAL HOLE, 1/22/2014 11:06:34 AM

Stimulations & Treatments

Date 9/19/2005	Zone CODELL, ORIGINAL HOLE	Primary Job Type RE-FRAC
Technical Result	Tech Result Details	Tech Result Note
Comment		

Date 10/1/2008	Zone NIOBRARA, ORIGINAL HOLE	Primary Job Type RECOMPLETION
Technical Result	Tech Result Details	Tech Result Note
Comment		

Other In Hole

Run Date	Des	OD (in)	Top (ftKB)	Btm (ftKB)
9/26/2008	Bridge Plug - Permanent	3.9	6,920.0	6,922.0

Logs

Date	Type	Top, MD (ftKB)	Btm, MD (ftKB)
12/3/2000	COMPENSATED DENSITY	4,100.0	7,198.0
12/3/2000	INDUCTION	476.0	7,198.0
12/12/2000	CEMENT BOND	4,000.0	7,138.0

