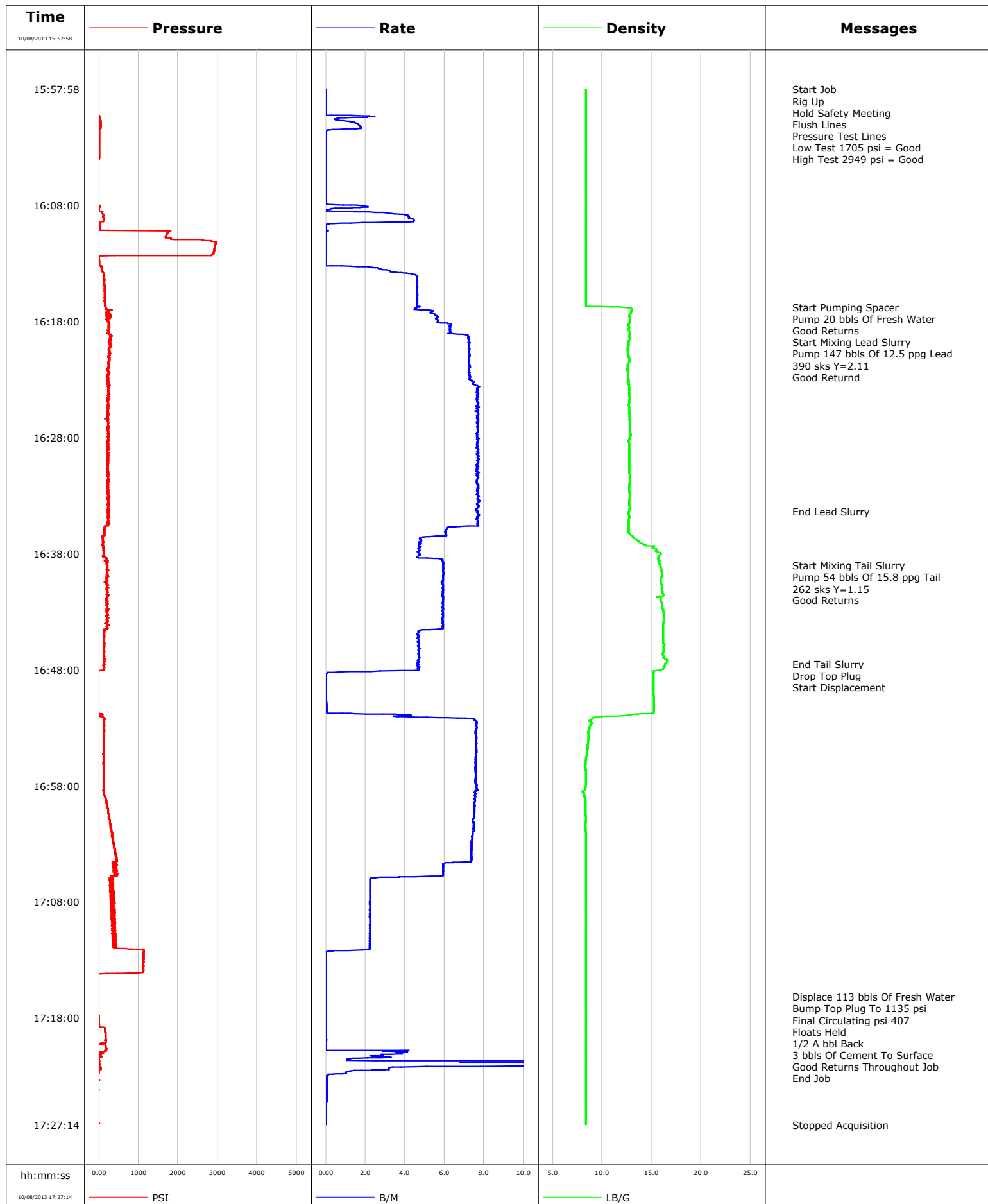


Well BAT -13A-17-07-
Field Battlement Mesa
Engineer Justin Zika
Country United States

Client Ursa
SIR No.
Job Type Surface
Job Date 10-08-2013

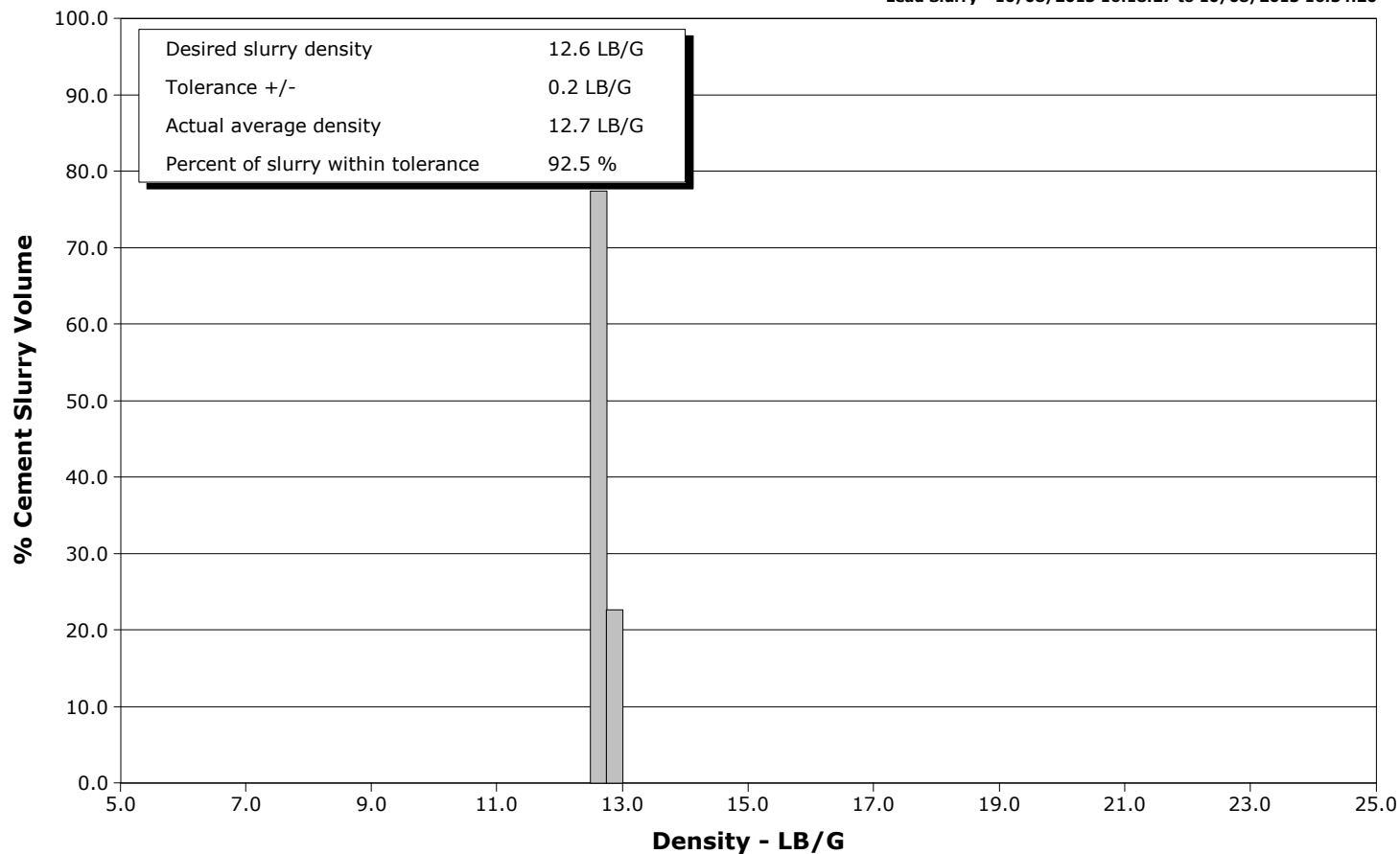


Schlumberger Cementing Qa/Qc Density Report

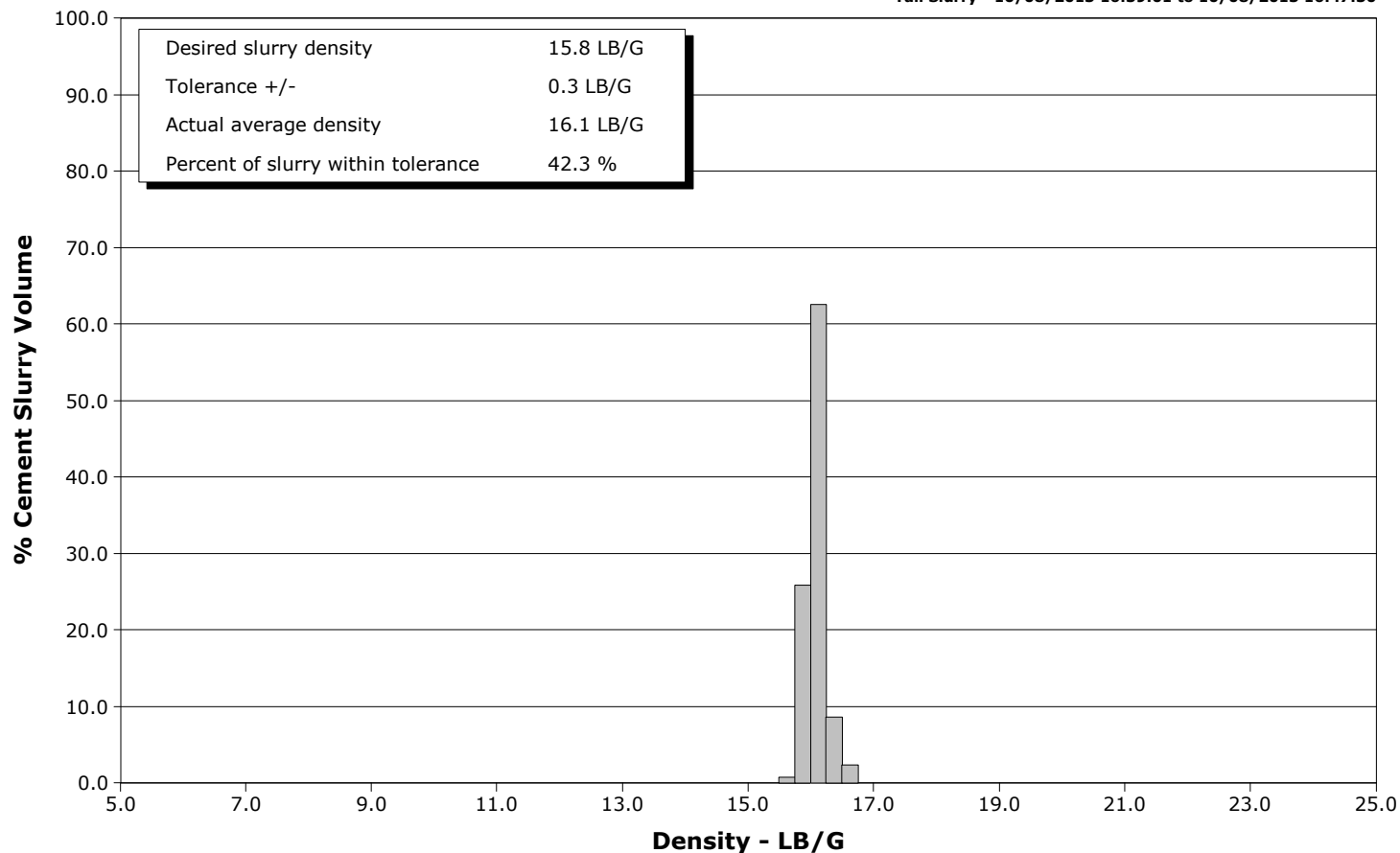
Well BAT -13A-17-07-
Field Battlement Mesa
Engineer Justin Zika
Country United States

Client Ursa
SIR No.
Job Type Surface
Job Date 10-08-2013

Lead Slurry - 10/08/2013 16:18:27 to 10/08/2013 16:34:20



Tail Slurry - 10/08/2013 16:39:01 to 10/08/2013 16:47:30





Cementing Service Report

				Customer Ursa		Job Number 1856914		
Well BAT -13A-17-07- -13A-17-07-			Location (legal) Grand Junction,CO		Schlumberger Location GCO		Job Start Oct/08/2013	
Field Battlement Mesa		Formation Name/Type Shale		Deviation	Bit Size 12.3 in	Well MD 1893.0 ft		Well TVD
County Garfield		State/Province Colorado		BHP	BHST 102 degF	BHCT 85 degF	Pore Press. Gradient	
Well Master 0631161159		API/UWI 05045190930000						
Rig Name Pro Petro 10	Drilled For Gas	Service Via Land	Casing/Liner					
			Depth, ft	Size, in	Weight, lb/ft	Grade	Thread	
Offshore Zone	Well Class New	Well Type Development	1893.0	8.630	32.0	J55	8RD	
			0.0	0.000	0.0			
Drilling Fluid Type		Max. Density	Plastic Viscosity	Tubing/Drill Pipe				
				Depth,	Size,	Weight,	Grade	Thread
Service Line Cementing	Job Type Surface							
Max. Allowed Tub. Press 1000 psi	Max. Allowed Ann. Press	WH Connection Single Cement head	Perforations/Open Hole					
			Top,	Bottom,		No. of Shots	Total Interval	
Service Instructions Rig Up Hold Safety Meeting Flush Lines Pressure Test Lines Pump 20 bbls Of Fresh Water Pump 147 bbls Of 12.5 ppg Lead Pump 54 bbls Of 15.8 ppg Tail Shut Down Drop Top Plug Displace 113 bbls Of Fresh Water								
Casing/Tubing Secured <input checked="" type="checkbox"/>		1 Hole Vol. Circulated prior to Cement <input checked="" type="checkbox"/>		Casing Tools		Squeeze Job		
Lift Pressure 1037 psi			Shoe Type Float			Squeeze Type		
Pipe Rotated <input type="checkbox"/>		Pipe Reciprocated <input type="checkbox"/>		Shoe Depth 1893.0 ft		Tool Type		
No. Centralizers		Top Plugs 1	Bottom Plugs	Stage Tool Type		Tool Depth		
Cement Head Type Single			Stage Tool Depth		Tail Pipe Size			
Job Scheduled For Oct/08/2013 09:30		Arrived on Location Oct/08/2013 09:30	Leave Location Oct/08/2013	Collar Type Float		Tail Pipe Depth		
				Collar Depth 18438.0 ft		Sqz. Total Vol.		
Date	Time 24-hr clock	Treating Pressure PSI	Flow Rate B/M	Density LB/G	Volume BBL	Message		
10/08/2013	14:37:05					Started Acquisition		
10/08/2013	15:57:58	-15	0.0	8.36	0.0			
10/08/2013	15:58:00					Start Job		
10/08/2013	15:58:00	-15	0.0	8.36	0.0			
10/08/2013	15:58:01					Rig Up		
10/08/2013	15:58:01					Hold Safety Meeting		
10/08/2013	15:58:01	-15	0.0	8.36	0.0			
10/08/2013	15:58:02					Flush Lines		
10/08/2013	15:58:02	-15	0.0	8.36	0.0			
10/08/2013	15:58:05					Pressure Test Lines		
10/08/2013	15:58:05	-15	0.0	8.36	0.0			
10/08/2013	15:58:07					Low Test 1705 psi = Good		
10/08/2013	15:58:07					High Test 2949 psi = Good		
10/08/2013	15:58:07	-15	0.0	8.36	0.0			
10/08/2013	15:58:45	-15	0.0	8.36	0.0			
10/08/2013	16:00:25	26	1.7	8.35	0.3			
10/08/2013	16:02:05	7	0.0	8.34	1.7			
10/08/2013	16:03:45	4	0.0	8.34	1.7			
10/08/2013	16:05:25	-15	0.0	8.34	1.7			
10/08/2013	16:07:05	-15	0.0	8.34	1.7			
10/08/2013	16:08:45	104	3.6	8.34	2.8			

Well			Field		Job Start		Customer		Job Number	
BAT -13A-17-07- -13A-17-07-			Battlement Mesa		Oct/08/2013		Ursa		1856914	
Date	Time 24-hr clock	Treating Pressure PSI	Flow Rate B/M	Density LB/G	Volume BBL	Message				
10/08/2013	16:12:05	2898	0.0	8.35	6.0					
10/08/2013	16:13:45	94	3.4	8.35	7.4					
10/08/2013	16:15:25	145	4.6	8.35	15.0					
10/08/2013	16:16:45					Start Pumping Spacer				
10/08/2013	16:16:45	161	4.7	11.05	21.1					
10/08/2013	16:16:46					Pump 20 bbls Of Fresh Water				
10/08/2013	16:16:46					Good Returns				
10/08/2013	16:16:46	164	4.7	11.05	21.2					
10/08/2013	16:17:05	212	5.4	12.94	22.7					
10/08/2013	16:18:27					Start Mixing Lead Slurry				
10/08/2013	16:18:27	269	6.3	12.68	30.5					
10/08/2013	16:18:28					Pump 147 bbls Of 12.5 ppg Lead				
10/08/2013	16:18:28					390 sks Y=2.11				
10/08/2013	16:18:28	269	6.3	12.68	30.6					
10/08/2013	16:18:29					Good Returnd				
10/08/2013	16:18:29	227	6.3	12.69	30.7					
10/08/2013	16:18:45	253	6.3	12.67	32.4					
10/08/2013	16:20:25	248	7.3	12.56	44.1					
10/08/2013	16:22:05	217	7.3	12.55	56.2					
10/08/2013	16:23:45	231	7.6	12.73	68.5					
10/08/2013	16:25:25	227	7.7	12.71	81.3					
10/08/2013	16:27:05	207	7.6	12.82	94.0					
10/08/2013	16:28:45	232	7.7	12.73	106.8					
10/08/2013	16:30:25	228	7.6	12.72	119.6					
10/08/2013	16:32:05	212	7.7	12.74	132.4					
10/08/2013	16:33:45	206	7.6	12.73	145.2					
10/08/2013	16:34:20					End Lead Slurry				
10/08/2013	16:34:20	209	7.7	12.71	149.7					
10/08/2013	16:35:25	269	7.7	12.65	158.0					
10/08/2013	16:37:05	96	4.7	13.85	167.8					
10/08/2013	16:38:45	223	5.9	15.71	176.1					
10/08/2013	16:39:01					Start Mixing Tail Slurry				
10/08/2013	16:39:01	203	5.9	15.85	177.6					
10/08/2013	16:39:03					Pump 54 bbls Of 15.8 ppg Tail				
10/08/2013	16:39:03					262 sks Y=1.15				
10/08/2013	16:39:03	217	5.9	15.85	177.8					
10/08/2013	16:39:04					Good Returns				
10/08/2013	16:39:04	228	5.9	15.86	177.9					
10/08/2013	16:40:25	183	5.9	15.89	185.9					
10/08/2013	16:42:05	177	5.9	15.94	195.8					
10/08/2013	16:43:45	207	5.9	16.25	205.6					
10/08/2013	16:45:25	124	4.7	16.16	214.4					
10/08/2013	16:47:05	160	4.7	16.37	222.3					
10/08/2013	16:47:30					End Tail Slurry				
10/08/2013	16:47:30	132	4.6	16.39	224.2					
10/08/2013	16:47:35					Drop Top Plug				
10/08/2013	16:47:35					Start Displacement				
10/08/2013	16:47:35	111	4.7	16.37	224.6					
10/08/2013	16:48:45	-31	0.0	15.17	227.3					
10/08/2013	16:50:25	-26	0.0	15.20	227.3					
10/08/2013	16:52:05	78	4.0	9.73	228.3					
10/08/2013	16:53:45	121	7.6	8.61	240.7					
10/08/2013	16:55:25	114	7.6	8.42	253.4					
10/08/2013	16:57:05	120	7.6	8.34	266.0					

Well			Field		Job Start	Customer	Job Number
BAT -13A-17-07- -13A-17-07-			Battlement Mesa		Oct/08/2013	Ursa	1856914
Date	Time 24-hr clock	Treating Pressure PSI	Flow Rate B/M	Density LB/G	Volume BBL	Message	
10/08/2013	17:00:25	232	7.5	8.31	291.2		
10/08/2013	17:02:05	329	7.4	8.35	303.6		
10/08/2013	17:03:45	411	7.4	8.35	315.9		
10/08/2013	17:05:25	463	5.9	8.35	327.1		
10/08/2013	17:07:05	315	2.2	8.35	332.5		
10/08/2013	17:08:45	403	2.2	8.35	336.3		
10/08/2013	17:10:25	427	2.2	8.35	340.0		
10/08/2013	17:12:05	686	2.2	8.35	343.7		
10/08/2013	17:13:45	1128	0.0	8.35	344.0		
10/08/2013	17:15:25	-17	0.0	8.35	344.0		
10/08/2013	17:16:12					Displace 113 bbls Of Fresh Water	
10/08/2013	17:16:12	-17	0.0	8.35	344.0		
10/08/2013	17:16:14					Bump Top Plug To 1135 psi	
10/08/2013	17:16:14	-17	0.0	8.35	344.0		
10/08/2013	17:16:15					Final Circulating psi 407	
10/08/2013	17:16:15					Floats Held	
10/08/2013	17:16:15	-17	0.0	8.35	344.0		
10/08/2013	17:16:16					1/2 A bbl Back	
10/08/2013	17:16:16					3 bbls Of Cement To Surface	
10/08/2013	17:16:16					Good Returns Throughout Job	
10/08/2013	17:16:16	-17	0.0	8.35	344.0		
10/08/2013	17:16:17					End Job	
10/08/2013	17:16:17	-16	0.0	8.35	344.0		
10/08/2013	17:17:05	-16	0.0	8.35	344.0		
10/08/2013	17:18:45	-15	0.0	8.35	344.0		
10/08/2013	17:20:25	163	0.0	8.35	344.0		
10/08/2013	17:22:05	13	20.5	8.36	351.7		
10/08/2013	17:23:45	-16	0.1	8.35	355.0		
10/08/2013	17:25:25	-15	0.0	8.36	355.1		
10/08/2013	17:27:05	-6	0.0	8.34	355.1		
10/08/2013	17:27:14	-15	0.0	8.35	355.1		

Post Job Summary

Average Pump Rates,					Volume of Fluid Injected, bbl			
Slurry	N2	Mud	Maximum Rate	Total Slurry 200.0	Mud	Spacer 20.0	N2	
Treating Pressure Summary, psi				Breakdown Fluid				
Maximum 1037	Final 407	Average	Bump Plug to 1135	Breakdown	Type	Volume	Density	
Avg. N2 Percent		Designed Slurry Volume 200.0 bbl	Displacement 113.0 bbl	Mix Water Temp 54 degF	Cement Circulated to Surface? <input checked="" type="checkbox"/>	Volume 3.0 bbl		
					Washed Thru Perfs <input type="checkbox"/>	To		
Customer or Authorized Representative Craig Smith			Schlumberger Supervisor Justin Zika			Circulation Lost <input type="checkbox"/>	Job Completed <input checked="" type="checkbox"/>	
						-	-	