

**ANADARKO PETROLEUM CORP - EBUS  
DO NOT MAIL - PO BOX 4995  
THE WOODLANDS, Texas**

Wirkner Vance 35N-1HZ

**MAJORS 42**

## **Post Job Summary**

# **Cement Surface Casing**

Date Prepared: 10/11/2013  
Version: 1

Service Supervisor: BARRAS, JOSEPH

Submitted by: HINDS, MOLLYE

# HALLIBURTON

## Wellbore Geometry

---

Job Tubulars					MD	
Type	Description	Size in	ID in	Wt lbm/ft	Top ft	Bottom ft
Casing	9 5/8" Surface Casing	9.63	8.921	36.00	0.00	1,011.00
Open Hole Section	13 1/2" Open Hole Section		13.500		0.00	1,011.00

## Pumping Schedule

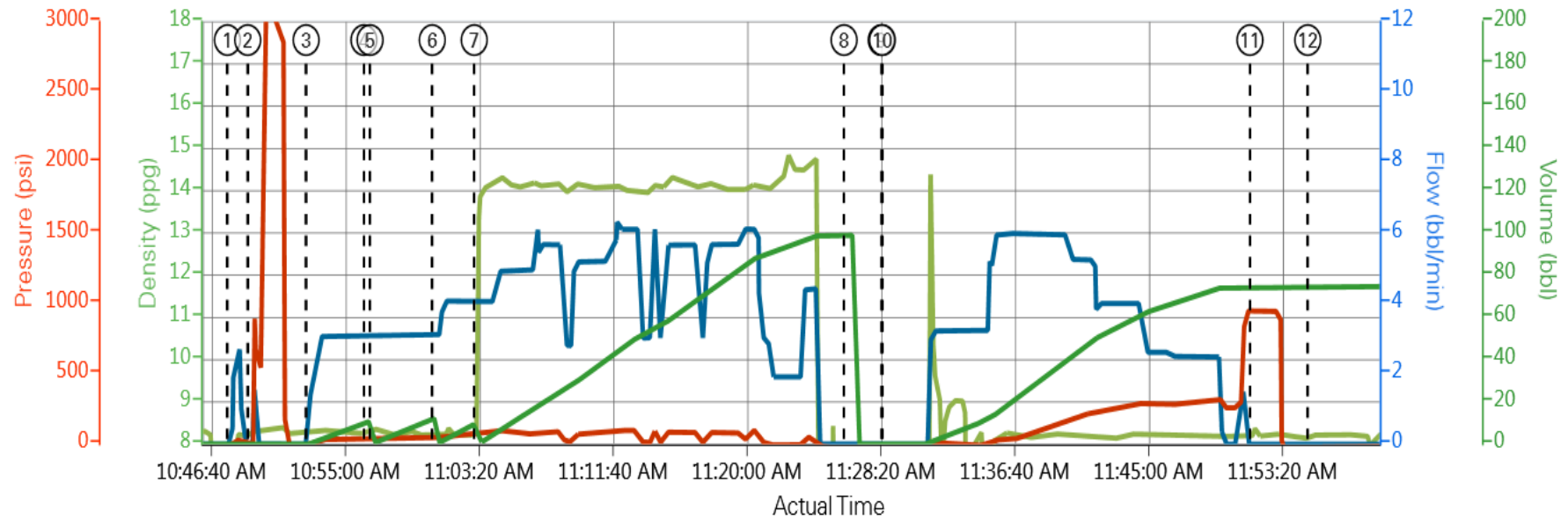
---

Stage /Plug #	Fluid #	Fluid Type	Fluid Name	Surface Density lbm/gal	Avg Rate bbl/min	Surface Volume	Downhole Volume
1	1	Spacer	Fresh Water Spacer	8.33	4.00	10.0 bbl	10.0 bbl
1	2	Spacer	Mud Flush	8.40	5.00	10.0 bbl	10.0 bbl
1	3	Cement Slurry	SwiftCem B2	14.20	6.00	380.0 sacks	380.0 sacks

# HALLIBURTON

## Data Acquisition

### ANADARKO SURFACE BOYD 27C-5HZ



Cement Density (ppg) Comb Pump Rate (bbl/min) DS Pump Press (psi) Comb Pump Total (bbl)

## Service Supervisor Reports

### Job Log

Date/Time	Chart #	Activity Code	Pump Rate	Cum Vol	Pump	Pressure (psig)	Comments
10/09/2013 08:30		Arrive at Location from Service Center					rig still running casing
10/09/2013 08:45		Casing on Bottom					waiting on rain for rent called for containment @ 7 am
10/09/2013 09:10		Rig-Up Equipment					move HES onto containment and rig up for job
10/09/2013 09:45		Rig-Up Completed					
10/09/2013 10:15		Safety Meeting - Pre Job					with HES and rig crew
10/09/2013 10:47		Start Job					
10/09/2013 10:49		Test Lines	1.5				test lines to 2500 psi noi visible leaks
10/09/2013 10:52		Pump Spacer 1	4	10		40.0	rig water
10/09/2013 10:56		Pump Spacer 2	4	10		42.0	rig water with mud flush
10/09/2013 11:00		Pump Spacer 1	5	10		65.0	rig water
10/09/2013 11:03		Pump Cement	6	104		98.0	mixed with rig water @ 14.2 ppg /380 sks of swiftcem 1.54 yield 7.66 gal/sk
10/09/2013 11:26		Shutdown					
10/09/2013 11:28		Drop Top Plug					loaded in casing no plug container in yard/ pumped with quick-latch swedge
10/09/2013 11:28		Pump Displacement	5	75		322.0	rig water with cement back to surface @ 60 BLL INTO DISPLACING
10/09/2013 11:51		Bump Plug	2			943.0	
10/09/2013 11:53		Check Floats					held with 1 bbl back to truck
10/09/2013 11:55		End Job					
10/09/2013 12:00		Safety Meeting - Pre Rig-Down					
10/09/2013 13:00		Return to Service Center from Job					

# HALLIBURTON

**The Road to Excellence Starts with Safety**

Sold To #: 300466	Ship To #: 3110511	Quote #:	Sales Order #: 900809105
-------------------	--------------------	----------	--------------------------

Customer: ANADARKO PETROLEUM CORP - EBUS	Customer Rep: Hersh, Larry
--	----------------------------

Well Name: Wirkner Vance	Well #: 35N-1HZ	API/UWI #:
--------------------------	-----------------	------------

Field: WATTENBERG	City (SAP): FORT LUPTON	County/Parish: Weld	State: Colorado
-------------------	-------------------------	---------------------	-----------------

Contractor: MAJORS	Rig/Platform Name/Num: MAJORS 42
--------------------	----------------------------------

Job Purpose: Cement Surface Casing
------------------------------------

Well Type: Development Well	Job Type: Cement Surface Casing
-----------------------------	---------------------------------

Sales Person: FLING, MATTHEW	Srcv Supervisor: BARRAS, JOSEPH	MBU ID Emp #: 405168
------------------------------	---------------------------------	----------------------

### Job Personnel

HES Emp Name	Exp Hrs	Emp #	HES Emp Name	Exp Hrs	Emp #	HES Emp Name	Exp Hrs	Emp #
BANUELOS, GUADALUPE	0.0	372277	BARRAS, JOSEPH Corey	0.0	405168	MAYFIELD, BYRON L	0.0	528751
MULLER, MICHEL B	0.0	529830						

### Equipment

HES Unit #	Distance-1 way	HES Unit #	Distance-1 way	HES Unit #	Distance-1 way	HES Unit #	Distance-1 way
10248062C	15 mile	10824253C	15 mile	11036301	15 mile	11518548	15 mile

### Job Hours

Date	On Location Hours	Operating Hours	Date	On Location Hours	Operating Hours	Date	On Location Hours	Operating Hours
<b>TOTAL</b>			<i>Total is the sum of each column separately</i>					

### Job

### Job Times

Formation Name	Top	Bottom	Called Out	Date	Time	Time Zone
Formation Depth (MD)			On Location	09 - Oct - 2013	08:30	MST
Form Type		BHST	Job Started	09 - Oct - 2013	10:47	MST
Job depth MD	1011. ft	Job Depth TVD	Job Completed	09 - Oct - 2013	11:55	MST
Water Depth		Wk Ht Above Floor	Departed Loc	09 - Oct - 2013	13:00	MST
Perforation Depth (MD)	From	To				

### Well Data

Description	New / Used	Max pressure psig	Size in	ID in	Weight lbm/ft	Thread	Grade	Top MD ft	Bottom MD ft	Top TVD ft	Bottom TVD ft
13 1/2" Open Hole Section				13.5				.	1011.		
9 5/8" Surface Casing	Unknown		9.625	8.921	36.		J-55	.	1011.		

### Sales/Rental/3<sup>rd</sup> Party (HES)

Description	Qty	Qty uom	Depth	Supplier
CMT CASING EQUIPMENT BOM	1	JOB		
MILEAGE FOR CEMENTING CREW,ZI	30	MI		
ZI FUEL SURCHG-CARS/PICKUPS<1 1/2TON	30	MI		
KIT,HALL WELD-A	1	EA		
CNTRLZR, 9 5/8"x13 3/4',#500-0963-1375	7	EA		
BASKET - CEMENT - 9-5/8 CSG X 12-1/4	1	EA		
Description	Qty	Qty uom	Depth	Supplier
PLUG,CMTG, TOP,9 5/8,HWE,8.16 MIN/9.06 MA	1	EA		
COLLAR-STOP-9 5/8"-FRICTION-HINGED	2	EA		

# HALLIBURTON

## Tools and Accessories

Type	Size	Qty	Make	Depth	Type	Size	Qty	Make	Depth	Type	Size	Qty	Make
Guide Shoe					Packer					Top Plug			
Float Shoe					Bridge Plug					Bottom Plug			
Float Collar					Retainer					SSR plug set			
Insert Float										Plug Container			
Stage Tool										Centralizers			

## Miscellaneous Materials

Gelling Agt		Conc		Surfactant		Conc		Acid Type		Qty		Conc	%
Treatment Fld		Conc		Inhibitor		Conc		Sand Type		Size		Qty	

## Fluid Data

### Stage/Plug #: 1

Fluid #	Stage Type	Fluid Name	Qty	Qty uom	Mixing Density lbm/gal	Yield ft3/sk	Mix Fluid Gal/sk	Rate bbl/min	Total Mix Fluid Gal/sk
1	Fresh Water Spacer			bbl	8.33	.0	.0	.0	
2	Mud Flush		12.00	bbl	8.4	.0	.0	.0	
		3.33 lbm/bbl	MUD FLUSH III, 40 LB SACK (101633304)						
		42 gal/bbl	MUD FLUSH III - SBM (528788)						
3	SwiftCem B2	SWIFTCEM (TM) SYSTEM (452990)	380.0	sacks	14.2	1.54	7.66		7.66
		7.66 Gal	FRESH WATER						

### Calculated Values

### Pressures

### Volumes

Displacement		Shut In: Instant		Lost Returns		Cement Slurry		Pad	
Top Of Cement		5 Min		Cement Returns		Actual Displacement		Treatment	
Frac Gradient		15 Min		Spacers		Load and Breakdown		Total Job	

### Rates

Circulating		Mixing		Displacement		Avg. Job	
Cement Left In Pipe	Amount	42 ft	Reason	Shoe Joint			
Frac Ring # 1 @	ID	Frac ring # 2 @	ID	Frac Ring # 3 @	ID	Frac Ring # 4 @	ID

The Information Stated Herein Is Correct	Customer Representative Signature
--	-----------------------------------