



December 23, 2013

Director Lepore
Colorado Oil and Gas Conservation Commission
1120 Lincoln Street, Suite 801
Denver, CO 80203

Re: 30 Day Certification Letter – Rule 318 A(e)
Eberle 14-32-31NHZM
NESE of Section 32, Township 1N, Range 66W
Weld County, Colorado

Dear Director Lepore,

Synergy Resources Corporation (SRC) is planning to drill the captioned horizontal well in accordance with the provisions of COGCC Rule 318A.(e).

SRC's proposed wellbore spacing unit consists of the S/2 of Section 32 and the SE/4 of Section 31, Township 1N Range 66W, creating a 480-acre wellbore spacing unit for the Codell formation.

Synergy Resources Corporation hereby certifies to the Director that SRC owns 100% interest in the proposed well bore spacing unit for the above said well, and requests the Director to approve the Horizontal well.

If you have any questions or issues regarding this permit, please contact Craig Rasmuson at (970) 737-1073.

Sincerely,

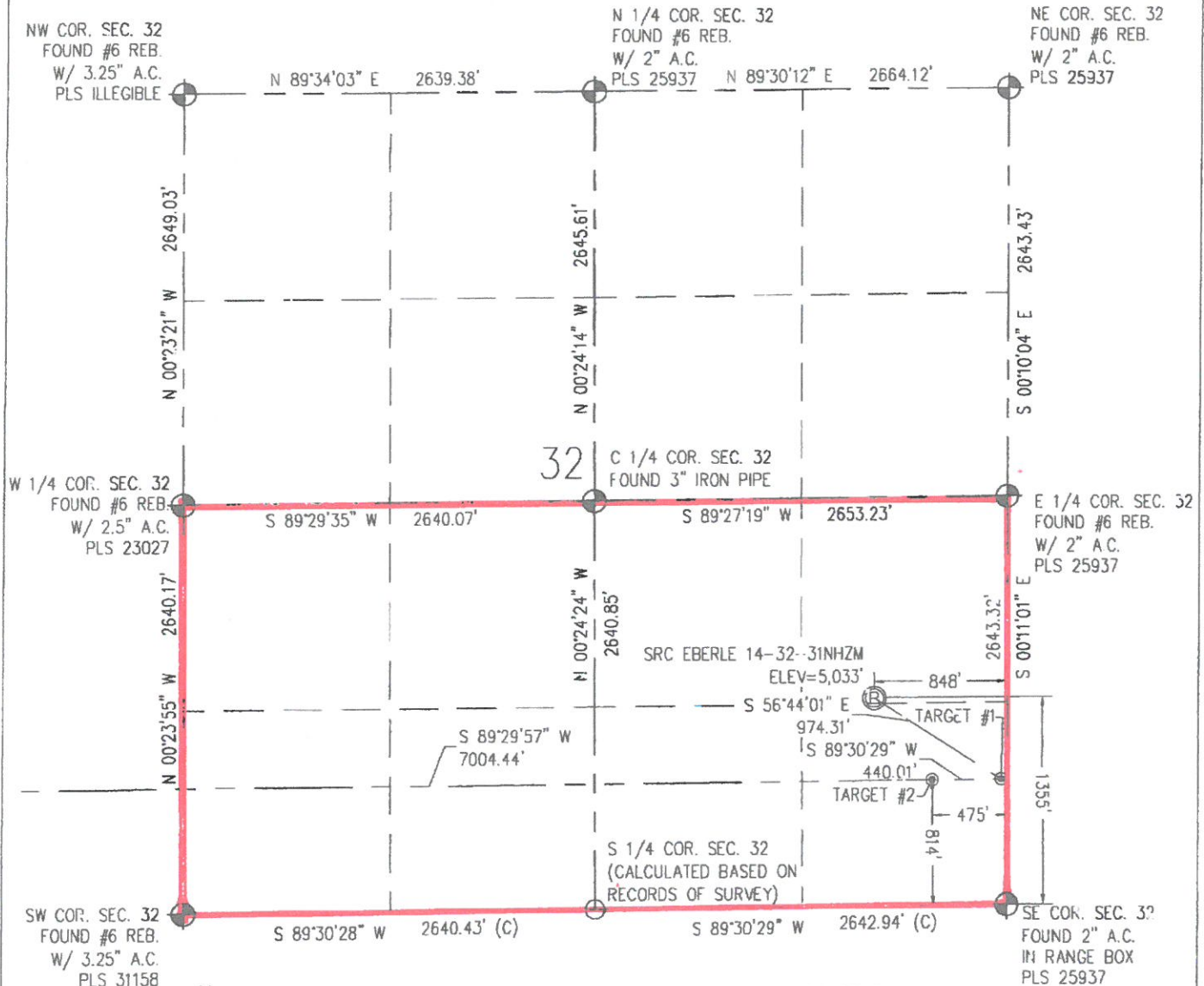
Craig Rasmuson

Craig Rasmuson
Synergy Resources Corporation

Baseline Engineering Corp. 710 11th Avenue Suite 105 Greeley, Colorado 80631

WELL LOCATION CERTIFICATE

THIS MAP DOES NOT REPRESENT A BOUNDARY SURVEY

SECTION 32
TOWNSHIP 1 NORTH
RANGE 66 WEST

IN ACCORDANCE WITH A REQUEST FROM CRAIG RASMUSON - SYNERGY RESOURCES, BASELINE ENGINEERING CORP HAS DETERMINED THE LOCATION OF THE SRC EBERLE 14-32-31NHZM TO BE 1355' FSL AND 848' FEL, AS MEASURED AT NINETY (90) DEGREES FROM THE SECTION LINE OF SECTION 32, TOWNSHIP 1 NORTH, RANGE 66 WEST AND THE BOTTOM HOLE LOCATION TO BE 814' FSL AND 2193' FEL OF SECTION 31, TOWNSHIP 1 NORTH, RANGE 66 WEST, 6TH PRINCIPAL MERIDIAN, WELD COUNTY, COLORADO

I HEREBY CERTIFY THAT THIS WELL LOCATION CERTIFICATE WAS PREPARED BY ME, OR UNDER MY DIRECT SUPERVISION, THAT THE FIELD WORK WAS COMPLETED ON 11/08/2013, THAT IT IS NOT A LAND SURVEY PLAT OR AN IMPROVEMENT SURVEY PLAT, AND THAT IT IS NOT TO BE RELIED UPON FOR ESTABLISHMENT OF FENCE, BUILDING, OR OTHER FUTURE IMPROVEMENT LINES

NOTES:

- 1) LAT/LONG SHOWN ARE BASED ON A GPS OBSERVATION (NAD83).
- 2) BEARINGS SHOWN ARE GRID BEARINGS OF THE COLORADO STATE PLANE COORDINATE SYSTEM, NORTH ZONE, NORTH AMERICAN DATUM 1983/2007.
- 3) GROUND ELEVATIONS ARE BASED ON A GPS OBSERVATION (NAVD 88 DATUM)
- 4) ALL DISTANCES SHOWN ARE FIELD MEASURED UNLESS OTHERWISE NOTED.
- 5) THE NEAREST EXISTING WELL IS: EMMA DELVENTAL GAS UNIT #1 1945' NORTHWEST
- 6) IMPROVEMENTS: SEE LOCATION DRAWING EXHIBIT FOR ALL VISIBLE IMPROVEMENTS WITHIN 600' OF WELL HEAD
- 7) SURFACE USE: PASTURE.

NOTICE: According to Colorado law you MUST commence any legal action based upon any defect in this WLC within three years after you first discover such defect. In no event may any action based upon any defect in this WLC be commenced more than ten years from this said date of this certificate; show hereon.

SURFACE HOLE:
LATITUDE: 40.004155° N
LONGITUDE: 104.794540° W
PDOP: 1.4
1/4, 1/4 NE1/4SE1/4
NEAREST PROPERTY LINE: 200' S

BOTTOM HOLE:
LATITUDE: 40.002652° N
LONGITUDE: 104.818215° W

TARGET #1:
LATITUDE: 40.002670° N
LONGITUDE: 104.791648° W

TARGET #2:
LATITUDE: 40.002669° N
LONGITUDE: 104.793219° W

LEGEND

- - FOUND/SET SURVEY MONUMENT PER MONUMENT RECORD EXCEPTIONS NOTED
- - CALCULATED SURVEY MONUMENT POSITION
- (C) - CALCULATED DIMENSION

AARON A. DEMO
Professional Land Surveyor Registration No. 38283
State of Colorado
FOR AND ON BEHALF OF BASELINE ENGINEERING CORP.

Completed
12/4/2013

JOB #: SYNDNF5W32-02

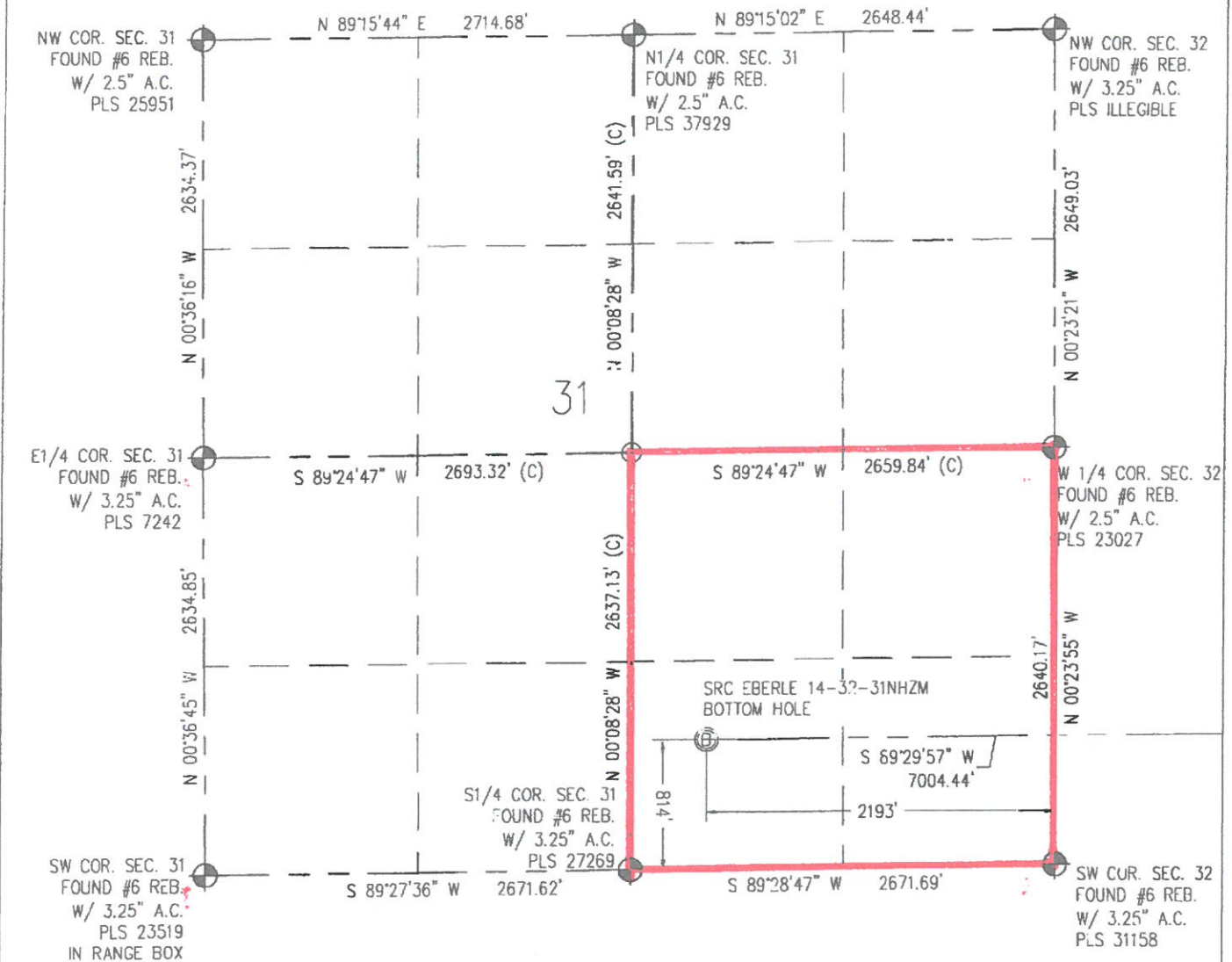


Baseline Engineering Corp. 710 11th Avenue Suite 105 Greeley, Colorado 80631

WELL LOCATION CERTIFICATE

THIS MAP DOES NOT REPRESENT A BOUNDARY SURVEY

SECTION 31
TOWNSHIP 1 NORTH
RANGE 66 WEST



IN ACCORDANCE WITH A REQUEST FROM CRAIG RASMUSON - SYNERGY RESOURCES, BASELINE ENGINEERING CORP. HAS DETERMINED THE LOCATION OF THE SRC EBERLE 14-32-31NHZM TO BE 1355' FSL AND 848' FEL, AS MEASURED AT NINETY (90) DEGREES FROM THE SECTION LINE OF SECTION 32, TOWNSHIP 1 NORTH, RANGE 66 WEST AND THE BOTTOM HOLE LOCATION TO BE 814' FSL AND 2193' FEL OF SECTION 31, TOWNSHIP 1 NORTH, RANGE 66 WEST, 6TH PRINCIPAL MERIDIAN, WELD COUNTY, COLORADO.

I HEREBY CERTIFY THAT THIS WELL LOCATION CERTIFICATE WAS PREPARED BY ME, OR UNDER MY DIRECT SUPERVISION, THAT THE FIELD WORK WAS COMPLETED ON 11/08/2013, THAT IT IS NOT A LAND SURVEY PLAT OR AN IMPROVEMENT SURVEY PLAT, AND THAT IT IS NOT TO BE RELIED UPON FOR ESTABLISHMENT OF FENCE, BUILDING, OR OTHER FUTURE IMPROVEMENT LINES.



NOTES

- 1) LAT/LONG SHOWN ARE BASED ON A GPS OBSERVATION (NAD83).
- 2) BEARINGS SHOWN ARE GRID BEARINGS OF THE COLORADO STATE PLANE COORDINATE SYSTEM, NORTH ZONE, NORTH AMERICAN DATUM 1983/2007.
- 3) GROUND ELEVATIONS ARE BASED ON A GPS OBSERVATION (NAVD 88 DATUM).
- 4) ALL DISTANCES SHOWN ARE FIELD MEASURED UNLESS OTHERWISE NOTED.
- 5) THE NEAREST EXISTING WELL IS: EMMA DELVENTAL GAS UNIT #1 1945' NORTHWEST.
- 6) IMPROVEMENTS: SEE LOCATION DRAWING EXHIBIT FOR ALL VISIBLE IMPROVEMENTS WITHIN 600' OF WELL HEAD.
- 7) SURFACE USE: PASTURE.

NOTICE: According to Colorado law you MUST commence any legal action based upon any defect in this WLC within three years after you first discover such defect. In no event may any action based upon any defect in this WLC be commenced more than ten years from this said date of the certification shown hereon.

SURFACE HOLE:
LATITUDE: 40.004155° N
LONGITUDE: 104.794540° W
PDOP: 1.2
1/4, 1/4 NE1/4SE1/4
NEAREST PROPERTY LINE: 200' S

BOTTOM HOLE:
LATITUDE: 40.002652° N
LONGITUDE: 104.818215° W

TARGET #1:
LATITUDE: 40.002670° N
LONGITUDE: 104.791648° W

TARGET #2:
LATITUDE: 40.002669° N
LONGITUDE: 104.793719° W

LEGEND

- - FOUND/SET SURVEY MONUMENT PER MONUMENT RECORD EXCEPTIONS NOTED
- - CALCULATED SURVEY MONUMENT POSITION
- (C) - CALCULATED DIMENSION

AARON A. DEMO
Professional Land Surveyor Registration No. 38285
State of Colorado
FOR AND ON BEHALF OF BASELINE ENGINEERING CORP.

Completed
2/4/2015

JOB #: SYN01468W32-02