

WELL LOCATION PLAT
T3S, R65W, 6th P.M.

ConocoPhillips Company

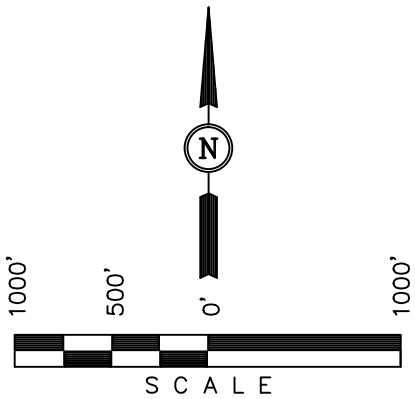
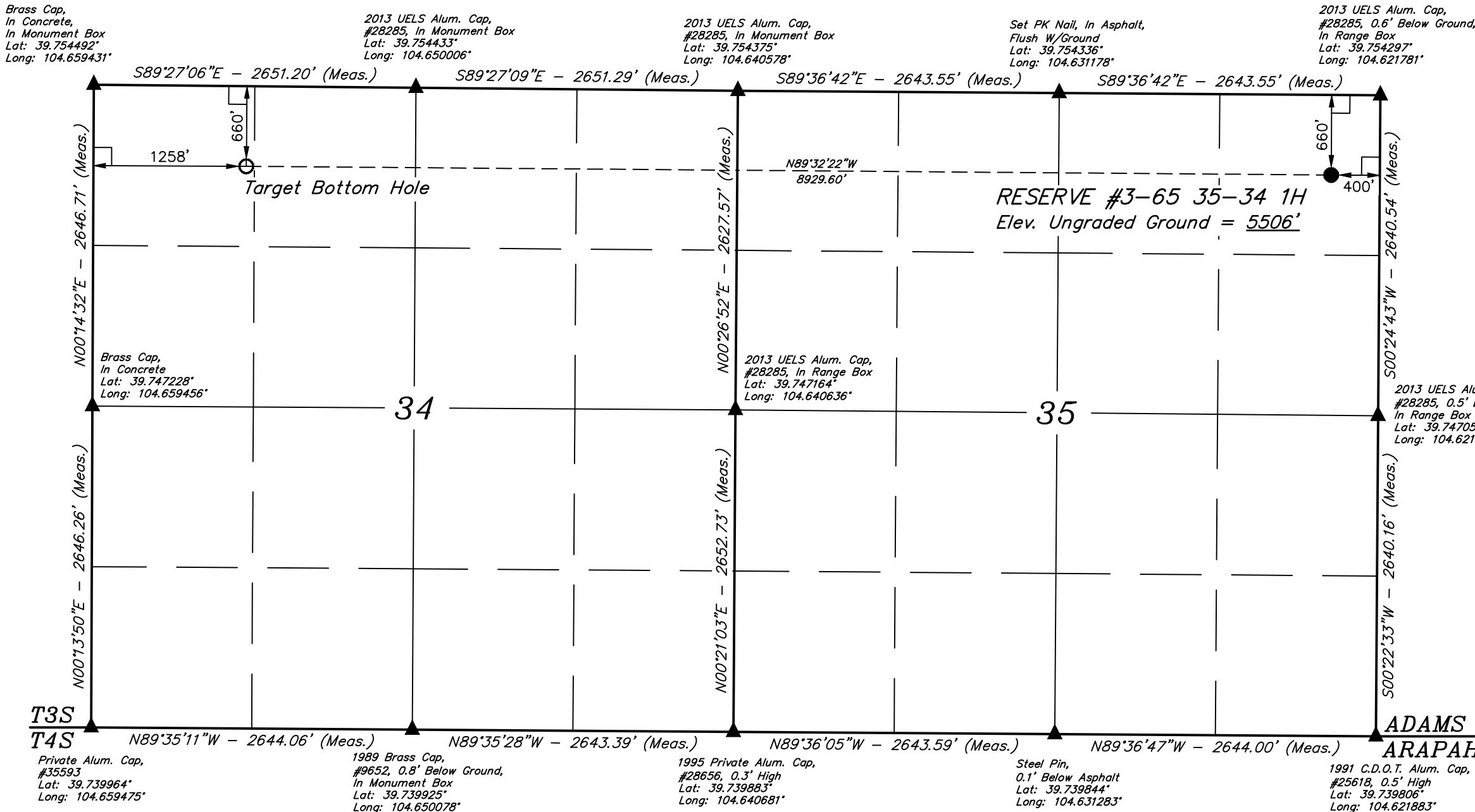
Well location, RESERVE #3-65 35-34 1H, located as shown in the NE 1/4 NE 1/4 of Section 35, T3S, R65W, 6th P.M., Adams County, Colorado.

BASIS OF ELEVATION

BENCHMARK 374 LOCATED ON THE SECTION LINE BETWEEN SECTIONS 12 & 13, T5S, R64W, 6th. P.M., TAKEN FROM 1988 PUBLISHED DATUM BY THE UNITED STATES DEPARTMENT OF THE INTERIOR, GEOLOGICAL SURVEY AS BEING 6054.61 FEET.

BASIS OF BEARINGS

BASIS OF BEARINGS IS A G.P.S. OBSERVATION.



CERTIFICATE OF ACCURACY
THIS IS TO CERTIFY THAT THE ABOVE PLAT WAS PREPARED FROM FIELD NOTES OF ACTUAL SURVEYS MADE BY ME OR UNDER MY SUPERVISION AND THAT THE SAME ARE TRUE AND CORRECT TO THE BEST OF MY KNOWLEDGE AND BELIEF.
JUL 28 2013
REGISTERED LAND SURVEYOR
REGISTRATION NO. 28285
STATE OF COLORADO
JUL 28 2013

- LEGEND:
- └─┘ = 90° SYMBOL
 - = PROPOSED WELL HEAD.
 - ▲ = SECTION CORNERS LOCATED.
 - = PROPOSED TARGET BOTTOM HOLE.

NAD 83 (TARGET BOTTOM HOLE)	NAD 83 (SURFACE LOCATION)
LATITUDE = 39°45'09.55" (39.752653)	LATITUDE = 39°45'08.97" (39.752492)
LONGITUDE = 104°39'17.87" (104.654964)	LONGITUDE = 104°37'23.58" (104.623217)
NAD 27 (TARGET BOTTOM HOLE)	NAD 27 (SURFACE LOCATION)
LATITUDE = 39°45'09.60" (39.752667)	LATITUDE = 39°45'09.02" (39.752506)
LONGITUDE = 104°39'15.99" (104.654442)	LONGITUDE = 104°37'21.69" (104.622692)

REVISED: 10-25-13 J.L.H.		
UINTAH ENGINEERING & LAND SURVEYING 85 SOUTH 200 EAST - VERNAL, UTAH 84078 (435) 789-1017		
SCALE 1" = 1000'	DATE SURVEYED: 08-27-13	DATE DRAWN: 08-30-13
PARTY J.H. C.M. J.S.	REFERENCES G.L.O. PLAT	
WEATHER HOT	FILE ConocoPhillips Company	

SECTION BREAKDOWN
T3S, R65W, 6th P.M.

ConocoPhillips Company

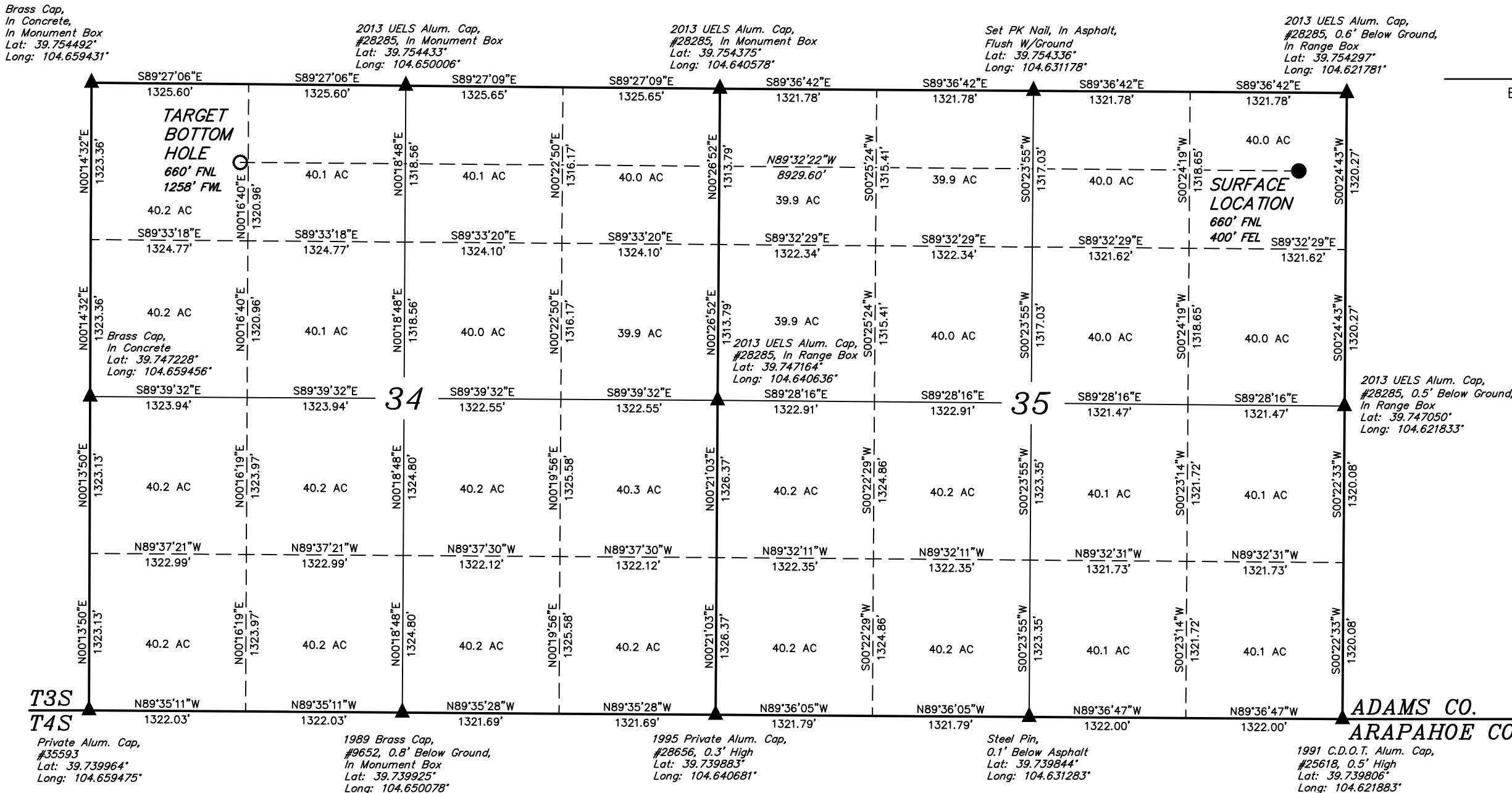
Well location, RESERVE #3-65 35-34 1H, located as shown in the NE 1/4 NE 1/4 of Section 35, T3S, R65W, 6th P.M., Adams County, Colorado.

BASIS OF ELEVATION

BENCHMARK 374 LOCATED ON THE SECTION LINE BETWEEN SECTIONS 12 & 13, T5S, R64W, 6th. P.M., TAKEN FROM 1988 PUBLISHED DATUM BY THE UNITED STATES DEPARTMENT OF THE INTERIOR, GEOLOGICAL SURVEY AS BEING 6054.61 FEET.

BASIS OF BEARINGS

BASIS OF BEARINGS IS A G.P.S. OBSERVATION.



- LEGEND:
- └─┘ = 90° SYMBOL
 - = PROPOSED WELL HEAD.
 - ▲ = SECTION CORNERS LOCATED.
 - = PROPOSED TARGET BOTTOM HOLE.

NAD 83 (TARGET BOTTOM HOLE)	NAD 83 (SURFACE LOCATION)
LATITUDE = 39°45'09.55" (39.752653)	LATITUDE = 39°45'08.97" (39.752492)
LONGITUDE = 104°39'17.87" (104.654964)	LONGITUDE = 104°37'23.58" (104.623217)
NAD 27 (TARGET BOTTOM HOLE)	NAD 27 (SURFACE LOCATION)
LATITUDE = 39°45'09.60" (39.752667)	LATITUDE = 39°45'09.02" (39.752506)
LONGITUDE = 104°39'15.99" (104.654442)	LONGITUDE = 104°37'21.69" (104.622692)

REVISED: 10-25-13 J.L.H.

UINTAH ENGINEERING & LAND SURVEYING 85 SOUTH 200 EAST - VERNAL, UTAH 84078 (435) 789-1017		
SCALE 1" = 1000'	DATE SURVEYED: 08-27-13	DATE DRAWN: 08-30-13
PARTY J.H. C.M. J.S.	REFERENCES G.L.O. PLAT	
WEATHER HOT	FILE ConocoPhillips Company	