

**ANADARKO PETROLEUM CORP - EBUS
DO NOT MAIL - PO BOX 4995
THE WOODLANDS, Texas**

Butterball 4N-15HZ

Majors 42

Post Job Summary **Cement Surface Casing**

Prepared for:
Date Prepared: 9/29/2013
Version: 1

Service Supervisor: OTERI, VAUGHN

Submitted by: FINNEY, SEAN

HALLIBURTON

Wellbore Geometry

Job Tubulars					MD		Shoe Joint Length ft
Type	Description	Size in	ID in	Wt lbm/ft	Top ft	Bottom ft	
Casing	9 5/8" Surface Casing	9.63	8.921	36.00	0.00	1,017.00	42.00
Open Hole Section	13 1/2" Open Hole Section		13.500		0.00	1,017.00	0.00

HALLIBURTON

Pumping Schedule

Stage / Plug #	Fluid #	Fluid Type	Fluid Name	Surface Density lbm/gal	Avg Rate bbl/min	Surface Volume	Downhole Volume
1	1	Spacer	Fresh Water Spacer	8.33	3.00	10.0 bbl	10.0 bbl
1	2	Spacer	Mud Flush	8.40	3.00	12.0 bbl	12.0 bbl
1	3	Spacer	WATER SPACER	8.33	3.00	10.0 bbl	10.0 bbl
1	4	Cement Slurry	SwiftCem B2	14.20	5.00	396.0 sacks	396.0 sacks

Fluids Pumped

Stage/Plug # 1 Fluid 1: Fresh Water Spacer
DUMMY MUD / FLUSH / SPACER SBC MATERIAL

Fluid Density: 8.33 lbm/gal
Fluid Volume: 10.00 bbl
Pump Rate: 3.00 bbl/min

Stage/Plug # 1 Fluid 2: Mud Flush
DUMMY MUD / FLUSH / SPACER SBC MATERIAL
42 gal/bbl Mud Flush III
3.5 lbm/bbl Mud Flush III

Fluid Density: 8.40 lbm/gal
Fluid Volume: 12.00 bbl
Pump Rate: 3.00 bbl/min

Stage/Plug # 1 Fluid 3: WATER SPACER
DUMMY MUD / FLUSH / SPACER SBC MATERIAL

Fluid Density: 8.33 lbm/gal
Fluid Volume: 10.00 bbl
Pump Rate: 3.00 bbl/min

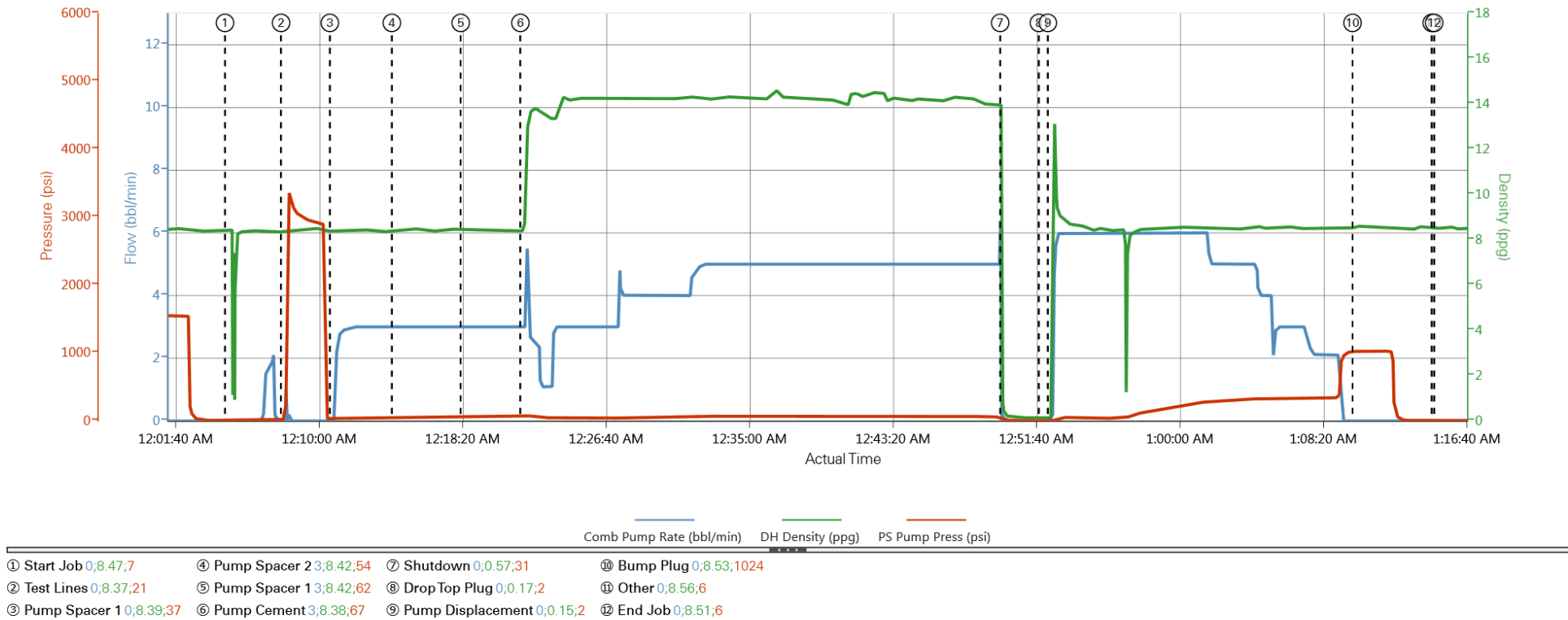
Stage/Plug # 1 Fluid 4: SwiftCem B2
SWIFTCEM (TM) SYSTEM

Fluid Weight: 14.20 lbm/gal
Slurry Yield: 1.55 ft³/sack
Total Mixing Fluid: 7.68 Gal
Surface Volume: 396.0 sacks
Sacks: 396.0 sacks
Calculated Fill: 900.00 ft
Calculated Top of Fluid: 0.00 ft

HALLIBURTON

Data Acquisition

ANADARKO BUTTERBALL 4N-15HZ



HALLIBURTON

Service Supervisor Reports

Job Log

Date/Time	Chart #	Activity Code	Pump Rate	Cum Vol	Pump		Pressure (psig)		Comments
09/21/2013 21:30		Arrive at Location from Service Center							Crew arrived on location, met with company rep, advised us that they had just started running casing due to rig break down
09/21/2013 23:00		Casing on Bottom							Advised casing was on bottom by Company Rep, Finished riggin up rig floor
09/22/2013 00:05		Start Job							Preloaded plug into cement head, witnessed by Company Rep.
09/22/2013 00:08		Test Lines						3500	Pressure tested pumps and lines, found no leaks and pressure held good.
09/22/2013 00:10		Pump Spacer 1	3	10				37	Pumped fresh water from frac tank.
09/22/2013 00:15		Pump Spacer 2	3	12				54	Mixed Mud Flush with fresh water
09/22/2013 00:19		Pump Spacer 1	3	10				62	Pumped Fresh water from frac tank
09/22/2013 00:22		Pump Cement	5	109				67	Mixed 14.2ppg SwiftCem with fresh water.
09/22/2013 00:50		Shutdown							Release plug witnessed by Company Rep
09/22/2013 00:52		Drop Top Plug							Good Release, Plug away
09/22/2013 00:52		Pump Displacement	6	74				524	Pumped fresh water displacement from frac tank
09/22/2013 01:10		Bump Plug						1024	Bumped Plug and took 500 psi over final pressure
09/22/2013 01:15		Check Floats							Release pressure back to pump truck, floats held
09/22/2013 01:15		End Job							

The Road to Excellence Starts with Safety

Sold To #: 300466		Ship To #: 3107173		Quote #:		Sales Order #: 900762686	
Customer: ANADARKO PETROLEUM CORP - EBUS				Customer Rep: Porter, Bob			
Well Name: Butterball			Well #: 4N-15HZ		API/UWI #:		
Field:		City (SAP): FIRESTONE		County/Parish: Weld		State: Colorado	
Contractor: Majors			Rig/Platform Name/Num: Majors 42				
Job Purpose: Cement Surface Casing							
Well Type: Development Well				Job Type: Cement Surface Casing			
Sales Person: FLING, MATTHEW			Srvc Supervisor: OTERI, VAUGHN			MBU ID Emp #: 443828	

Job Personnel

HES Emp Name	Exp Hrs	Emp #	HES Emp Name	Exp Hrs	Emp #	HES Emp Name	Exp Hrs	Emp #
OTERI, VAUGHN Steeves	0.0	443828	WHIPPLE, WESLEY Morgan	0.0	518611			

Equipment

HES Unit #	Distance-1 way	HES Unit #	Distance-1 way	HES Unit #	Distance-1 way	HES Unit #	Distance-1 way
10246780C	10 mile	10988836C	10 mile	11410470C	10 mile		

Job Hours

Date	On Location Hours	Operating Hours	Date	On Location Hours	Operating Hours	Date	On Location Hours	Operating Hours
TOTAL	Total is the sum of each column separately							

Job

Formation Name	Formation Depth (MD)	Top	Bottom	Form Type	Job depth MD	Job depth TVD	Water Depth	Perforation Depth (MD)	From	To
				BHST	1017. ft	1017. ft				

Job Times

Called Out	Date	Time	Time Zone
	21 - Sep - 2013	17:00	MST
On Location	21 - Sep - 2013	21:30	MST
Job Started	22 - Sep - 2013	00:05	MST
Job Completed	22 - Sep - 2013	01:15	MST
Departed Loc	22 - Sep - 2013	02:00	MST

Well Data

Description	New / Used	Max pressure psig	Size in	ID in	Weight lbm/ft	Thread	Grade	Top MD ft	Bottom MD ft	Top TVD ft	Bottom TVD ft
13 1/2" Open Hole Section				13.5				.	1017.		
9 5/8" Surface Casing	Unknown		9.625	8.921	36.		J-55	.	1017.		

Sales/Rental/3rd Party (HES)

Description	Qty	Qty uom	Depth	Supplier
CMT CASING EQUIPMENT BOM	1	JOB		
MILEAGE FOR CEMENTING CREW,ZI	30	MI		
ZI FUEL SURCHG-CARS/PICKUPS<1 1/2TON	30	MI		
KIT,HALL WELD-A	1	EA		
CNTRLZR, 9 5/8x13 3/4,#500-0963-1375	6	EA		
PLUG,CMTG,TOP,9 5/8,HWE,8.16 MIN/9.06 MA	1	EA		
COLLAR-STOP-9 5/8"-FRICTION-HINGED	2	EA		
Description	Qty	Qty uom	Depth	Supplier

BASKET - CEMENT - 9-5/8 CSG X 12-1/4						1	EA		
Fluid Data									
Stage/Plug #: 1									
Fluid #	Stage Type	Fluid Name	Qty	Qty uom	Mixing Density lbm/gal	Yield ft ³ /sk	Mix Fluid Gal/sk	Rate bbl/min	Total Mix Fluid Gal/sk
1	Fresh Water Spacer		10.00	bbl	8.33	.0	.0	3.0	
2	Mud Flush		12.00	bbl	8.4	.0	.0	3.0	
42 gal/bbl		MUD FLUSH III - SBM (528788)							
3.5 lbm/bbl		MUD FLUSH III, 40 LB SACK (101633304)							
3	WATER SPACER		10.00	m3	.07	.0	.0	3.0	
4	SwiftCem B2	SWIFTCM (TM) SYSTEM (452990)	396.0	sacks	14.2	1.55	7.68	5.0	7.68
7.68 Gal		FRESH WATER							
Calculated Values		Pressures		Volumes					
Displacement		Shut In: Instant		Lost Returns		Cement Slurry		Pad	
Top Of Cement		5 Min		Cement Returns		Actual Displacement		Treatment	
Frac Gradient		15 Min		Spacers		Load and Breakdown		Total Job	
Rates									
Circulating		Mixing		Displacement		Avg. Job			
Cement Left In Pipe		Amount	42 ft	Reason	Shoe Joint				
Frac Ring # 1 @	ID	Frac ring # 2 @	ID	Frac Ring # 3 @	ID	Frac Ring # 4 @	ID		
The Information Stated Herein Is Correct				Customer Representative Signature					

