

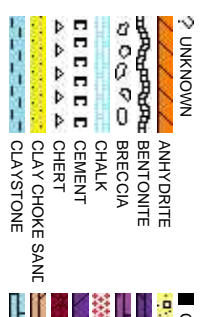


Scale: 5" / 100'  
Measured Depth Log

Well Name	BUTTERBALL 4N-15HZ		
Location	SEC 10 T2N R67W		
State	COLORADO	County	WELD
Country	USA		
API Number	051233786900	Rig Number	XTREME 8
Region	DJ BASIN	AFE #	2086565
Spud Date	11/14/2013	Field	WATTENBERG
		Drilling Completed	11/19/2013
Surface Coordinates	427' FNL, 585' FWL LAT 40.1466592 LON -104.883323		
Bottom Hole Coordinates	460' FSL, 906' FWL		
Ground Elevation	4996'	K.B. Elevation	5009'
Logged Interval	6950'	To	12506'
		Total Depth	12506'
Formation	NIOBRARA		
Type of Drilling Fluid	FW LSND		

Company Anadarko  
Address 1099 18th, Suite

Name JOSH GARRET  
Company ANADARKO  
Address 1099 18th, Suite



Operator

1800 Denver, CO 80202

Geologist

1800 Denver, CO 80202

Rock Types

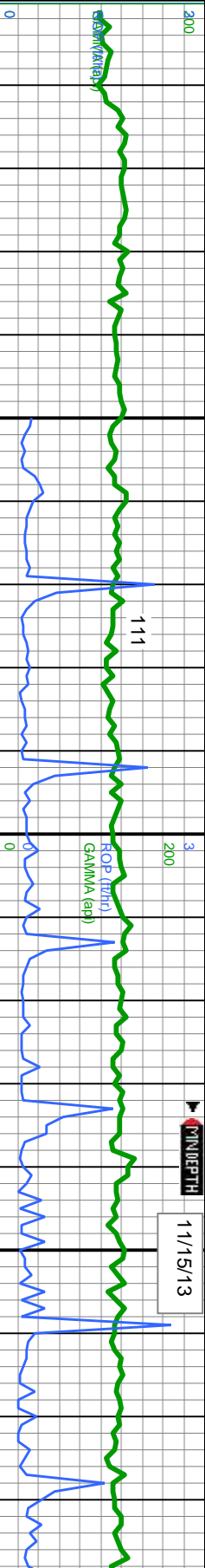
CONGLOMERATE	MARLSTONE	SHALY SANDSTONE
DOLomite	METAMORPHIC	SHALY SILTSTONE
DOLomitic LIMESTONE	NO SAMPLE	SILTY SHALE
GRANITE	SALT	SILTSTONE
GYPSUM	SANDSTONE	TUFF
IGNEOUS	SALT-PEPPER SANt	WELDED TUFF
SIDERITE or LIMONITE	SHALE	
LIMESTONE	SHALE COLORED	
	SHALE GRAY	

Accessories

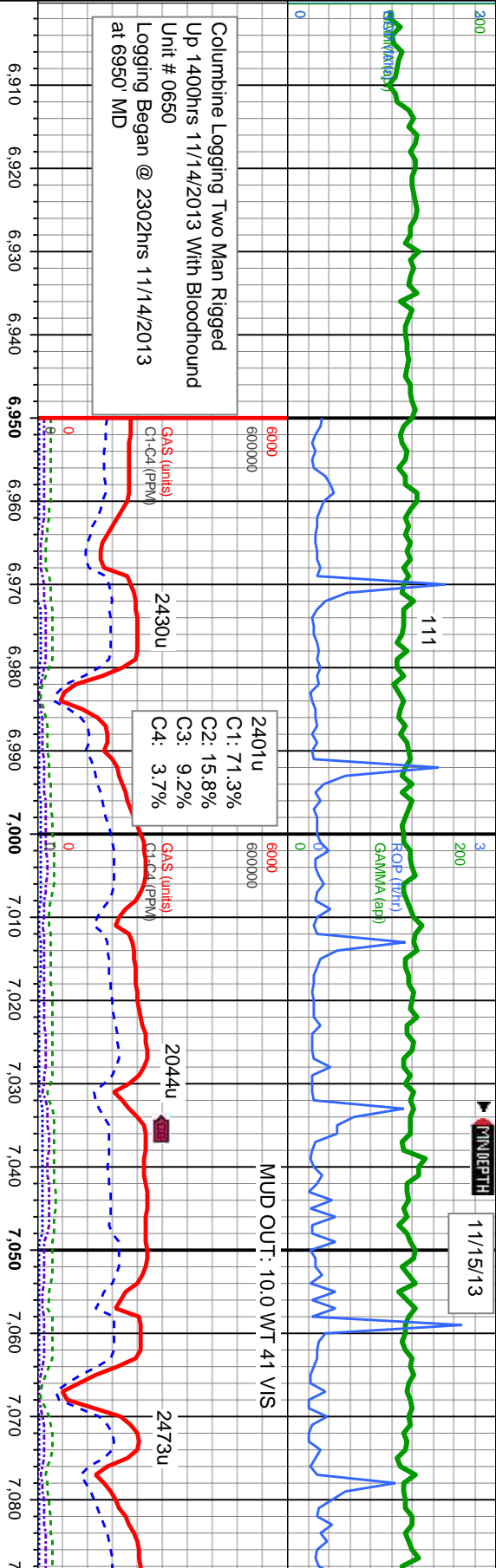
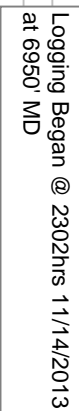
<b>Fossils</b>	GASTROPOD	ARGILLITE GRAIN	HEAVY MINERAL
INOCERAMUS	B BENTONITE	KAOLIN	ANHYDRITE STRINGER
ALGAE	OOLITE	BITUMENOUS SUBSTANCE	BENTONITE STRINGER
OSTRACOD	PELECYPOD	BRECCIA FRAGMENTS	COAL STRINGER
BIOLASTIC	PELLET	CALCAREOUS	DOLomite STRINGER
BRACHIOPOD	PISOLITE	CARBONACEOUS FLAKES	GYPSUM STRINGER
BRYOZOA	PLANT REMAINS	CHITDK	LIMESTONE STRINGER
CEPHALOPOD	PLANT SPORES	CHITLT	MARLSTONE (CALC) STRG
CORAL	SCAPHOPOD	COAL - THIN BEDS	MARLSTONE (DOL) STRG
CRINOID	STROMATOPOROID	DOLomitic	SANDSTONE STRINGER
ECHINOID	FERRUGINOUS PELLET	FELDSPAR	SHALE STRINGER
<b>Minerals</b>	FERRUGINOUS	GLAUCONITE	SILTSTONE STRINGER
FISH	TUFACEOUS	GYPSIFEROUS	
FORAMINIFERA	ANHYDRITIC		
F FOSSIL	ARGILLACEOUS	<b>Stringer</b>	

Other Symbols

<b>Oil Show</b>	PINPOINT	FAULT	WIRELINE TESTED - LEFT	E EARTHY
VUGGY	FORMATION TOP	WIRELINE TESTED - RT	FX FINELYXLN	
<b>Engineering</b>	GAS SHOW	DRILL STEM TEST	BS GRAINSTONE	
BIT	OIL SHOW	MN DEPTH	L LITHOGRAPHIC	
SPOTTED STAINING	CONNECTION (LEFT)	<b>Rounding</b>	MX MICROXLN	
MN DEPTH UP	MN DEPTH (DOWN)	ANGULAR	MS MUDSTONE	
CONNECTION (DOWN)	NORMAL FAULT	PS PACKSTONE		
<b>Porosity</b>	CONNECTION GAS	R ROUNDED	WS WACKSTONE	
E EARTHY	CONNECTION GAS (LEFT)	SUBANG		
FENESTRAL	TRIP GAS	SUBRND		
F FRACTURE	TRIP GAS (LEFT)	CASING		
INTERCRYSTALLINE	DOWN TIME GAS	SIDEWALL CORE (LEFT)	<b>Textures</b>	
INTEROOLITIC	DOWN TIME GAS (LEFT)	SLIDE	P POOR	
MOLDIC	CORE - LOST	SIDEWALL CORE (RIGHT)	BS BOUNDSTONE	
ORGANIC	CORE - RECOVERED	SURVEY	CHALKY	
			CRYPTOXLN	
			M MODERATE	
			W WELL	
				<b>Sorting</b>



Columbine Logging Two Man Rigged  
Up 1400hrs 11/14/2013 With Bloodhound  
Unit # 0650



TV-D

The ratings are based on 7 descriptors: None, Slight trace, Trace, Fair, Moderate, Good, and Excellent. The descriptor used is based on the loggers' observations and best judgment of brilliance, color and longevity of the cut.

MD: 6,988 '  
TVD: 6,942.98 '  
Inclination: 19.39 °  
Azimuth: 176.12 °  
VS: 98.37 '

MD: 7,031 '  
TVD: 6,983.12 '  
Inclination: 22.59 °  
Azimuth: 175.26 °  
VS: 83.02 '

MD: 7,074 '  
TVD: 7,022.37 '  
Inclination: 25.57 °  
Azimuth: 177.22 °  
VS: 65.51 '

SLTY SH: dk-med gy-gy bñ, sb ply-sb blky,  
med sft-fñ, mod fri-sl brit, v sl calc, v slty;  
mod stmq bl cut, amb ring

SLTY SH: dk-med gy-gy brn, sb ply-sb blk, med stf-firm, mod fir-sl brit, v sl calc, v slty; mod stmg bl cut, amb ring

SLTY SH: dk-med gy-gy brn, sb pl  
med sft-firm, mod fri-sl brit, v sl cald  
mod strng bl cut, amb ring

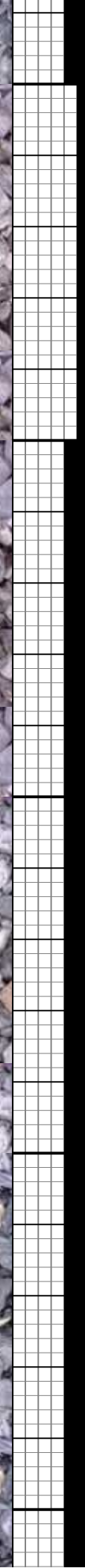
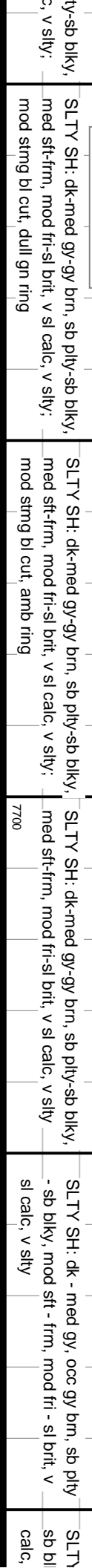
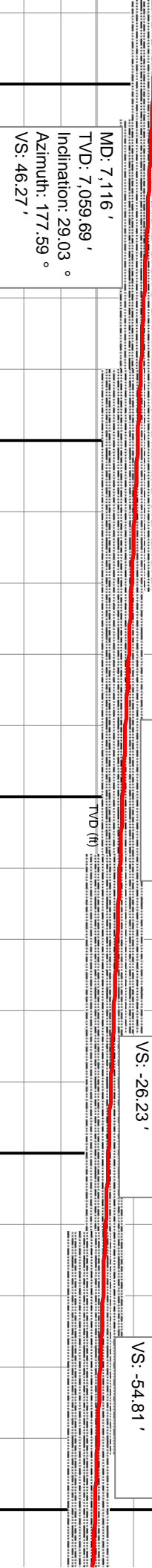
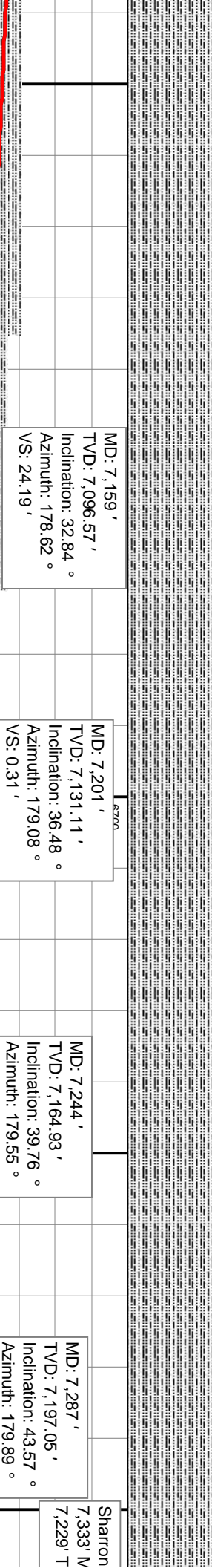
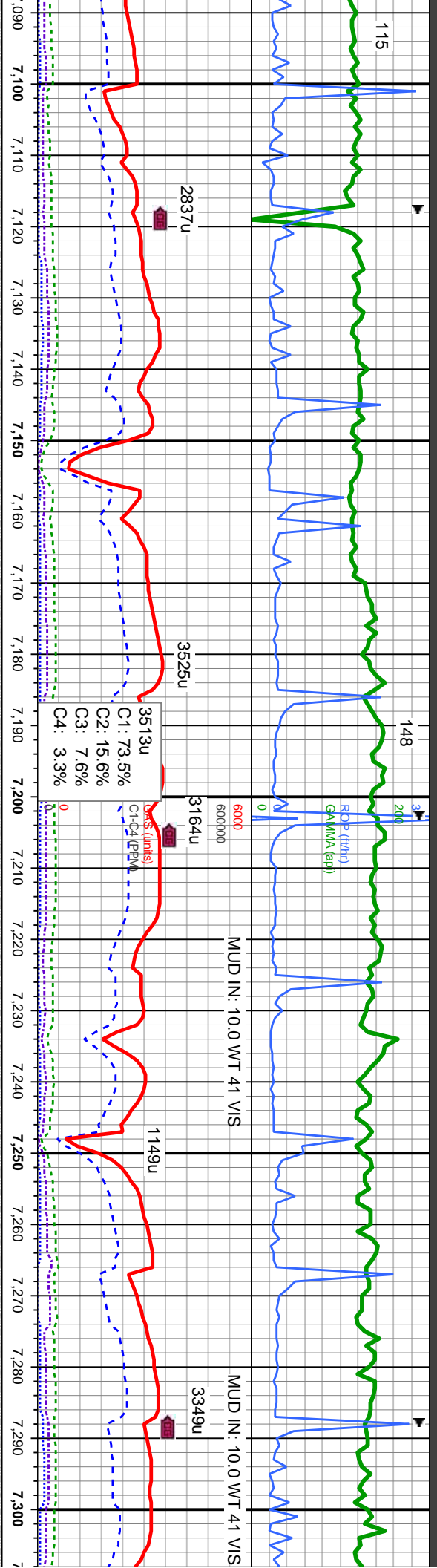
## Oil Show

ନବମ

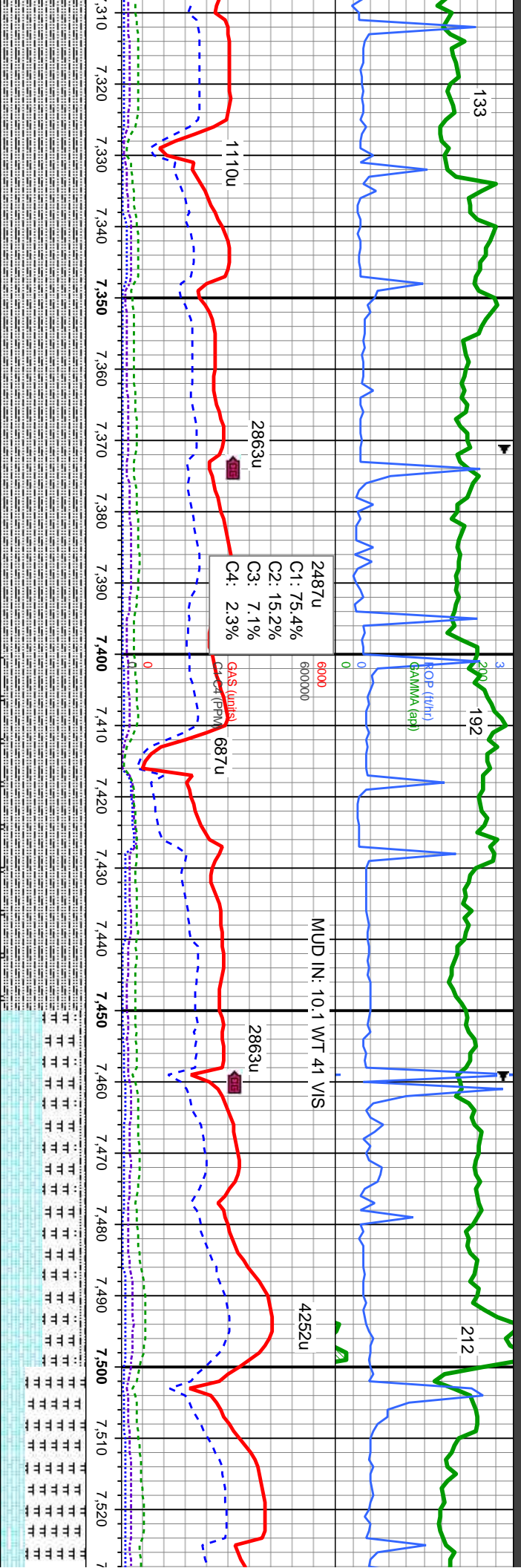
## Images











MD: 7,329 '  
TVD: 7,226.64 '  
Inclination: 46.83 °  
Azimuth: 180.52 °  
VS: -84.61 '

MD: 7,372 '  
TVD: 7,254.45 '  
Inclination: 50.51 °  
Azimuth: 181.19 °  
VS: 114.22 '

MD: 7,414 '  
TVD: 7,280.21 '  
Inclination: 53.84 °  
Azimuth: 181.42 °  
VS: 147.39 '

MD: 7,457 '  
TVD: 7,304.84 '  
Inclination: 56.25 °  
Azimuth: 180.78 °  
VS: 182.62 '

MD: 7,500 '  
TVD: 7,327.8 '  
Inclination: 59.21 °  
Azimuth: 179.91 °  
VS: 218.98 '

Niobrara Top:  
7,499' MD  
7,327' TVD

SH: dk - med gy, occ gy brn, sb pily -  
v sily; mod stmg bl cut, amb ring

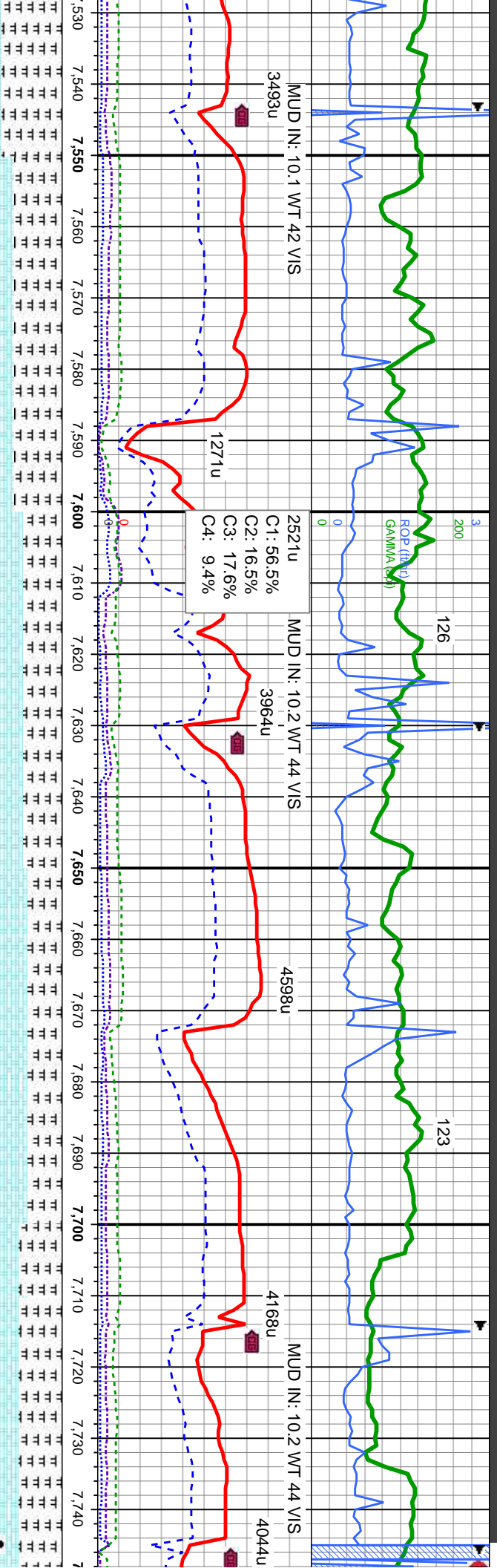
SLTY SH: dk - med gy, occ gy brn, sb  
pily - sb blkly, mod sft - frm, mod fri - sl  
brt, v sl calc, v sily; mod stmg bl cut,  
dull gn ring

SLTY SH: dk - med gy, occ gy brn, sb  
pily - sb blkly, mod sft - frm, mod fri - sl  
brt, v sl calc, v sily; MRLST: med-dk gy,  
sb blkly, med sft-frm, sily tex, tr pyr, scat  
bent, v calc; mod stmg bl cut, dull gn  
ring

MRLST: med-dk gy, sb blkly, med sft-frm, sily tex,  
tr pyr, scat bent, v calc; CHK:lt-med gy, occ dk  
gy, sb blkly, sft, v calc, reth-wxy tex; SLTY SH: dkMRLST: med-dk gy, sb  
med gy, occ gy brn, sb pily - sb blkly, mod sft -  
frm, mod fri - sl brt, v sl calc, v sily; mod stmg bl  
cut, amb ring  
mod stmg bl cut, pale y





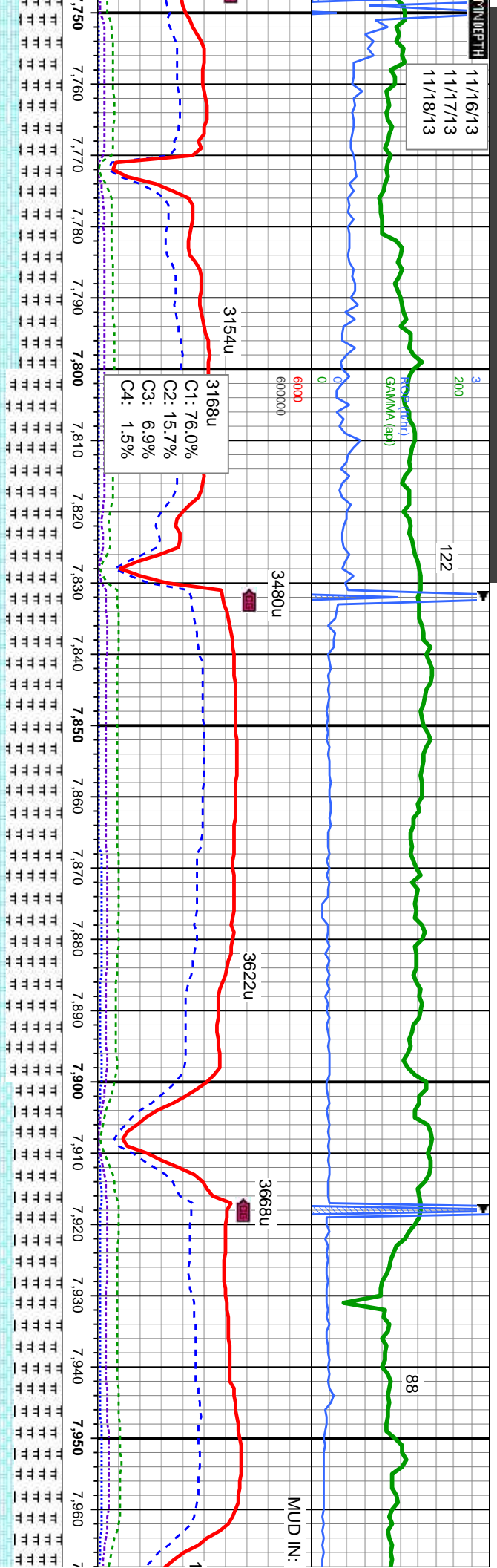


MD: 7,542' TVD: 7,348.12' Inclination: 62.92° Azimuth: 177.83° VS: 255.71'		MD: 7,585' TVD: 7,365.99' Inclination: 67.94° Azimuth: 179.51° VS: 294.79'		MD: 7,628' TVD: 7,380.25' Inclination: 73.31° Azimuth: 179.4° VS: 335.33'		MD: 7,670' TVD: 7,390.42' Inclination: 78.65° Azimuth: 179.85° VS: 376.06'		MD: 7,699' TVD: 7,395.09' Inclination: 82.8° Azimuth: 179.74° VS: 404.67'		MD: 7,745' TVD: 7,398.4° Inclination: 8° Azimuth: 17° VS: 450.53'	
Niobrara B: 7,606' MD 7,373' TVD											
TVD (ft)											

bkly, med sft-frm, silty	CHK:lt-med gy, ooc dk gy, sb bkly, med sft-frm, silty	CHK:lt-med gy, ooc dk gy, sb bkly, sft, v calc, CHK:lt-med gy, ooc dk gy, sb bkly, med sft-frm, silty	CHK:lt-med gy, ooc dk gy, sb bkly, sft, v calc, CHK:lt-med gy, ooc dk gy, sb bkly, med sft-frm, silty	CHK:lt-med gy, ooc dk gy, sb bkly, sft, v calc, CHK:lt-med gy, ooc dk gy, sb bkly, med sft-frm, silty	CHK:lt-med gy, ooc dk gy, sb bkly, sft, v calc, CHK:lt-med gy, ooc dk gy, sb bkly, med sft-frm, silty
calc, reth-wxy tex:	calc, reth-wxy tex:	calc, reth-wxy tex:	calc, reth-wxy tex:	calc, reth-wxy tex:	calc, reth-wxy tex:
mod sting bl cut, pale yel ring	mod sting bl cut, pale yel ring	mod sting bl cut, bright yel-wh ring	sting bl cut, bright yel-wh ring	sting bl cut, bright yel-wh ring	sting bl cut, bright yel-wh ring



DEPTH  
11/16/13  
11/17/13  
11/18/13



MD  
ST  
Resumed drilling @ 01:24  
MST on 11/18/2013  
TO BIT

MD: 7,780 '  
TV D: 7,400.9 '  
Inclination: 88.98 °  
Azimuth: 178.78 °  
VS: 485.41 '

TV D (ft)

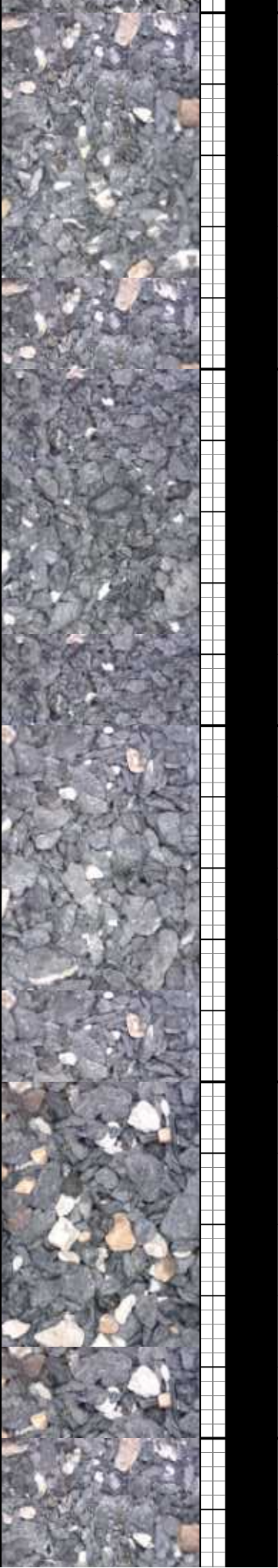
MD: 7,865 '  
TV D: 7,402.05 '  
Inclination: 89.47 °  
Azimuth: 178.88 °  
VS: 570.37 '

MD: 7,950 '  
TV D: 7,402.4 '  
Inclination: 90.06 °  
Azimuth: 178.76 °  
VS: 655.34 '

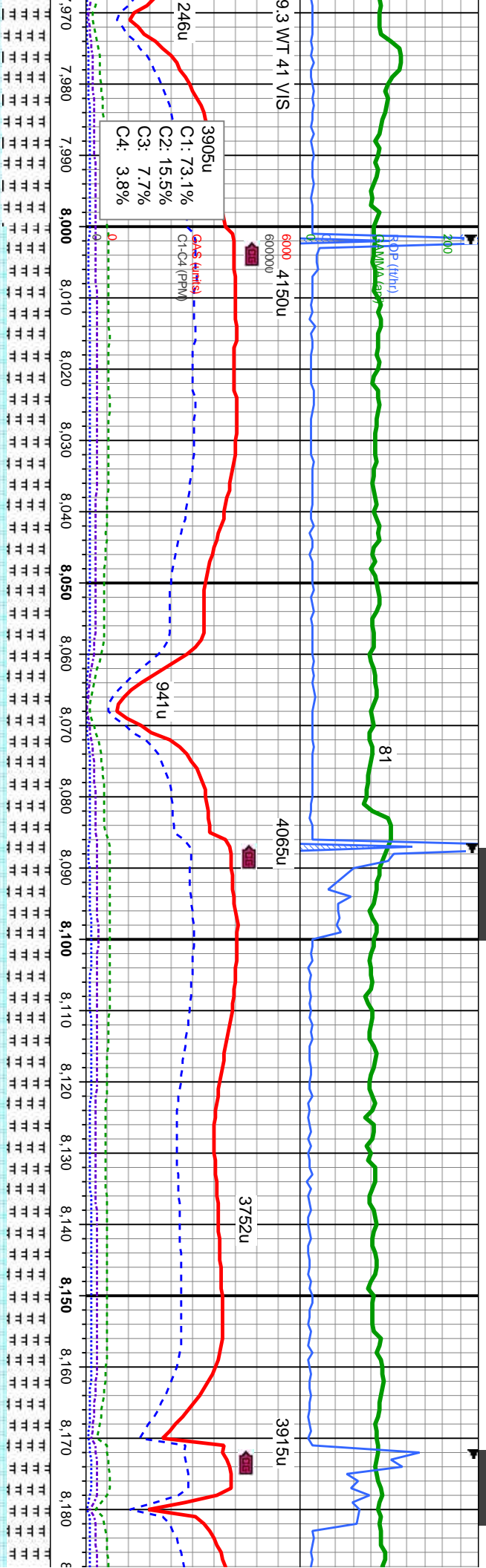
CHK:lt-med gy, occ dk gy, sb blk, sft, v calc,  
med-reth-wxy tex; MRLST: med-dk gy, sb blk, med  
sft-firm, silty tex, tr pyr, scat bent, v calc; con wi SS  
and cnt: fast stmg bl cut, bright yel-wh ring

7700 CHK:lt-med gy, occ dk gy, sb blk, sft, v calc, reth-wxy tex; MRLST: med-dk gy, sb blk,  
med sft-firm, silty tex, scat bent, scat inoc fos, v calc; fast stmg bl cut, bright yel-wh ring

MRLST: med-dk gy, sb blk, med sft-firm, silty tex, v cal  
occ dk gy, sb blk, sft, v calc, reth-wxy tex, scat bent, s  
frags; fast stmg bl cut, bright yel-wh ring







C1: 73.1%  
C2: 15.5%  
C3: 7.7%  
C4: 3.8%

Gas (ft/hr)  
C1-C4 (ppm)

MD: 8,035 '  
TVD: 7,402.6 '  
Inclination: 89.66 °  
Azimuth: 178.57 °  
VS: 740.3 '

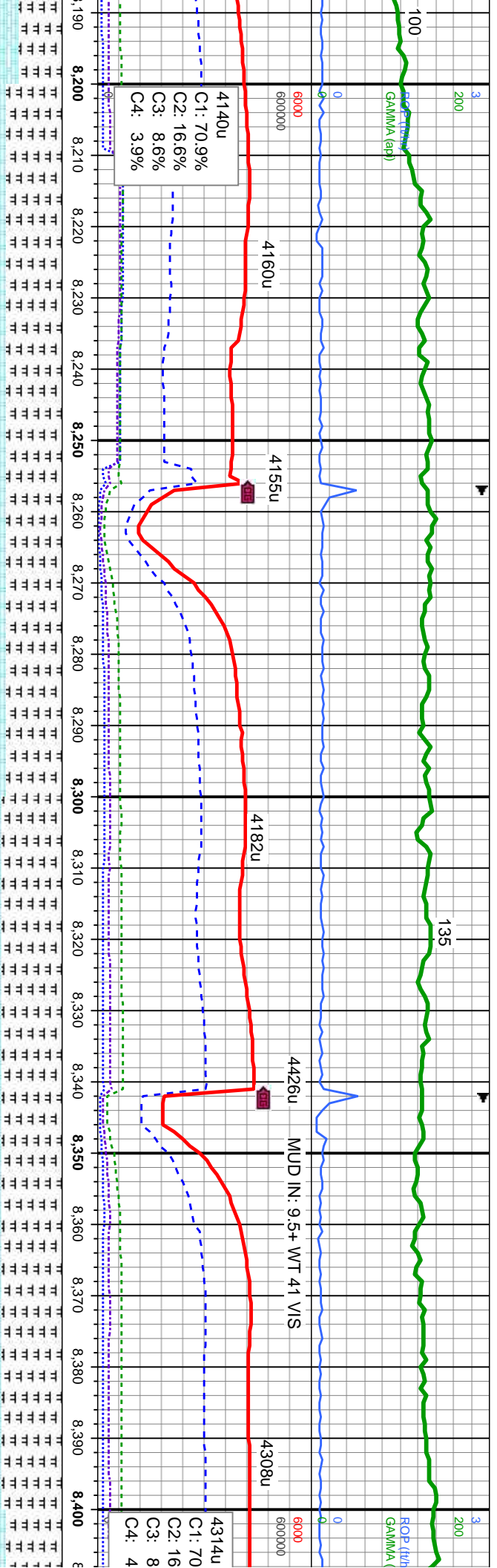
MD: 8,120 '  
TVD: 7,402.86 '  
Inclination: 90 °  
Azimuth: 179.47 °  
VS: 825.27 '

MRSLT: med-dk gy, sb blk, med sft-fr, silty tex, v calc;  
CHK:lt-med gy, occ dk gy, sb blk, sft, v calc, reth-wxy tex, scat bent,  
scat inoc fos, tr pyr frags; mod sting bl cut, pale yel ring

MRSLT: med-dk gy, sb blk, med sft-fr, silty tex, v calc; CHK:lt-med  
gy, occ dk gy, sb blk, sft, v calc, reth-wxy tex, scat bent, scat inoc  
fos, tr pyr frags; mod sting bl cut, pale yel ring







4140u  
C1: 70.9%  
C2: 16.6%  
C3: 8.6%  
C4: 3.9%

4160u

4155u

4182u

4426u

MUD IN: 9.5+ WT 41 VIS

4308u

4314u  
C1: 70  
C2: 16  
C3: 8  
C4: 4

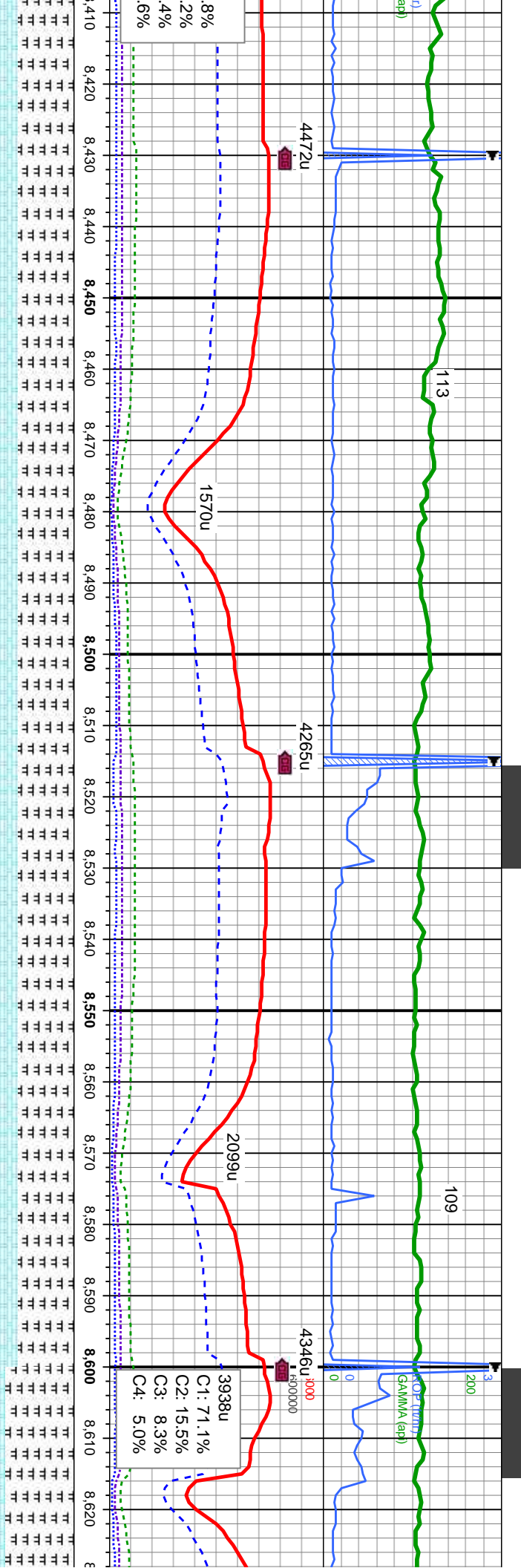
MD: 8,205 '  
TVD: 7,402.15 '  
Inclination: 90.95 °  
Azimuth: 180.23 °  
VS: 910.26 '

MD: 8,376 '  
TVD: 7,399.73 '  
Inclination: 90.67 °  
Azimuth: 179.41 °  
VS: 1,081.24 '

MRLST: med-dk gy, sb blk, med sft-fm, silty tex, v calc; CHK:lt-med gy, occ dk gy, sb blk, sft, v calc, reth-wxy tex, scat bent, scat inoc fos, tr pyr frags; mod stng bl cut, pale yel ring

MRLST: med-dk gy, sb blk, med sft-fm, silty tex, v calc; CHK:lt-med gy, occ dk gy, sb blk, sft, v calc, reth-wxy tex, scat bent, scat inoc fos, tr pyr frags; mod stng bl cut, pale yel ring





MD: 8,461 '  
TVD: 7,398.58 '  
Inclination: 90.89 °  
Azimuth: 178.9 °  
VS: 1,166.21 '

MD: 8,546 '  
TVD: 7,397.72 '  
Inclination: 90.27 °  
Azimuth: 179.07 °  
VS: 1,251.18 '

MD: 8,630 '  
TVD: 7,397.72 '  
Inclination: 90.27 °  
Azimuth: 179.07 °  
VS: 1,251.18 '

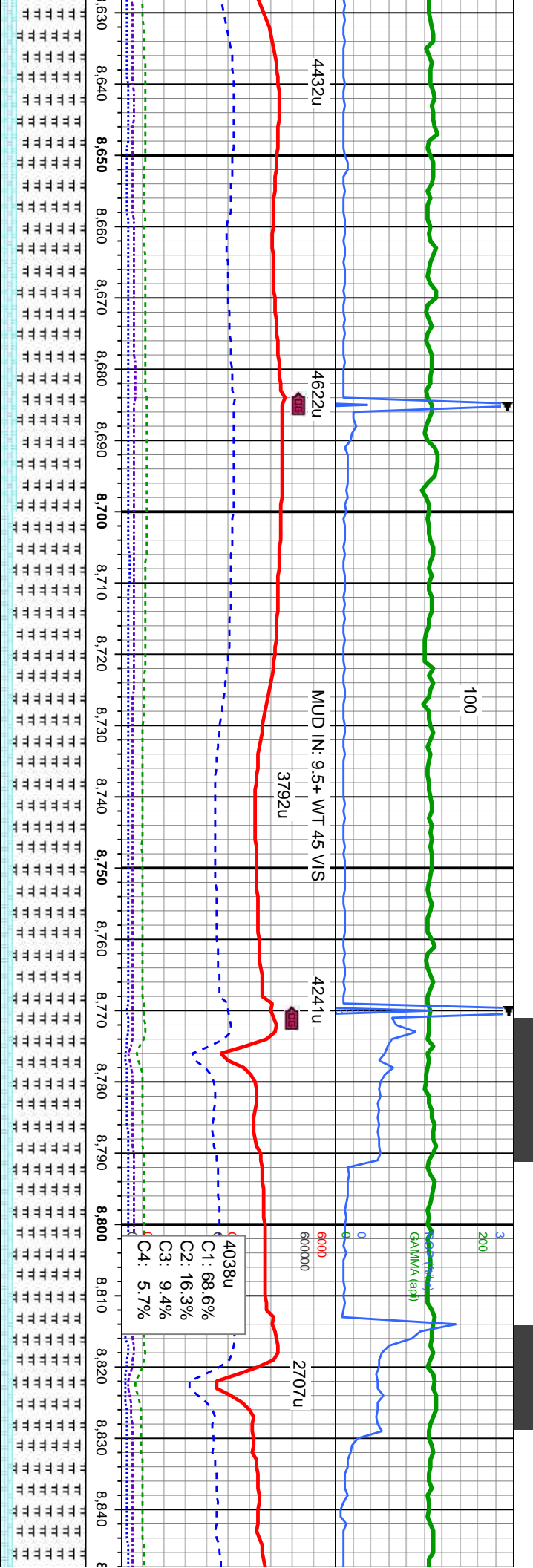
MRLST: med-dk gy, sb blk, med sft-fm, silty tex, v calc; CHK:lt-med gy, occ dk gy, sb blk, sft, v calc, reth-wxy tex, scat bent, scat inoc fos, tr pyr frags, mod string bl cut, pale yel ring

MRLST: med-dk gy, sb blk, med sft-fm, silty tex, v calc; CHK:lt-med gy, occ dk gy, sb blk, sft, v calc, reth-wxy tex, scat bent, scat inoc fos, tr pyr frags fast string bl cut, bright yel-wh ring

MRLST: med-dk gy, sb blk, med sft-fm, silty tex, v calc; CHK:lt-med gy, occ dk gy, sb blk, sft, v calc, reth-wxy tex, scat bent, scat inoc fos, tr pyr frags







MD: 8,731' TVD: 7,397.06' Inclination: 90.61° Azimuth: 180.41° VS: 36.17'

MD: 8,716' TVD: 7,396.88' Inclination: 89.63° Azimuth: 178.31° VS: 1,421.15'

MD: 8,801' TVD: 7,397.37' Inclination: 89.72° Azimuth: 180.86° VS: 1,506.13'

med-dk gy, sb blk, med sft-fm, silty tex, v calc;  
occ dk gy, sb blk, sft, v calc, reth-wxy tex, scat  
ben, scat inoc fos, tr pyr frags, fast string bl cut, bright bl-wh ring

MD: 8,731' TVD: 7,397.06' Inclination: 90.61° Azimuth: 180.41° VS: 36.17'

MD: 8,716' TVD: 7,396.88' Inclination: 89.63° Azimuth: 178.31° VS: 1,421.15'

MD: 8,801' TVD: 7,397.37' Inclination: 89.72° Azimuth: 180.86° VS: 1,506.13'

MD: 8,731' TVD: 7,397.06' Inclination: 90.61° Azimuth: 180.41° VS: 36.17'

MD: 8,716' TVD: 7,396.88' Inclination: 89.63° Azimuth: 178.31° VS: 1,421.15'

MD: 8,801' TVD: 7,397.37' Inclination: 89.72° Azimuth: 180.86° VS: 1,506.13'



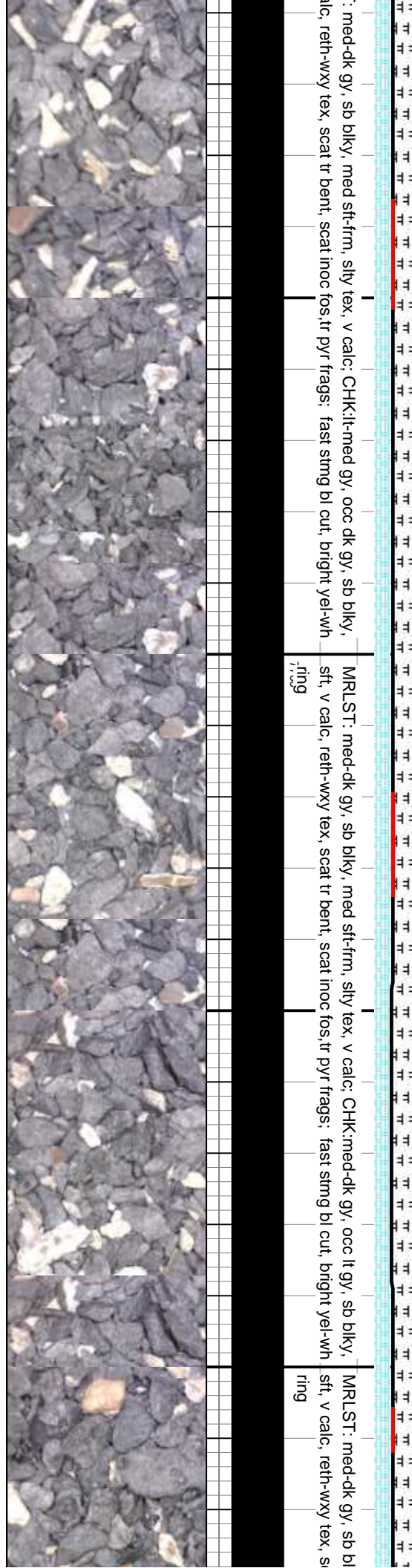
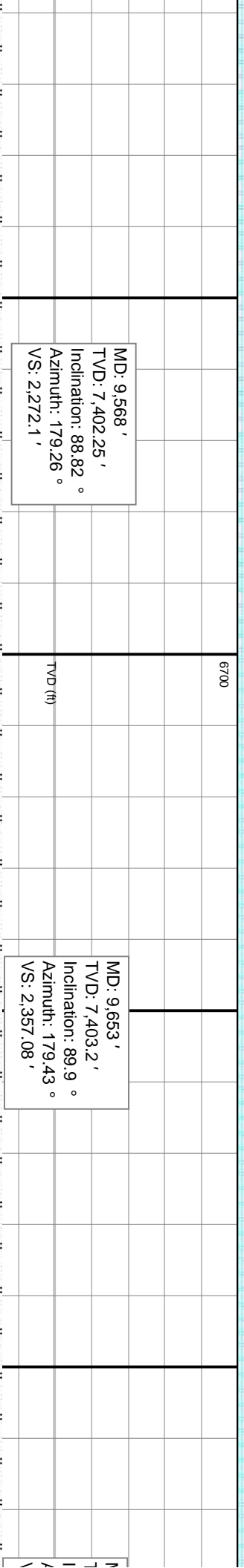
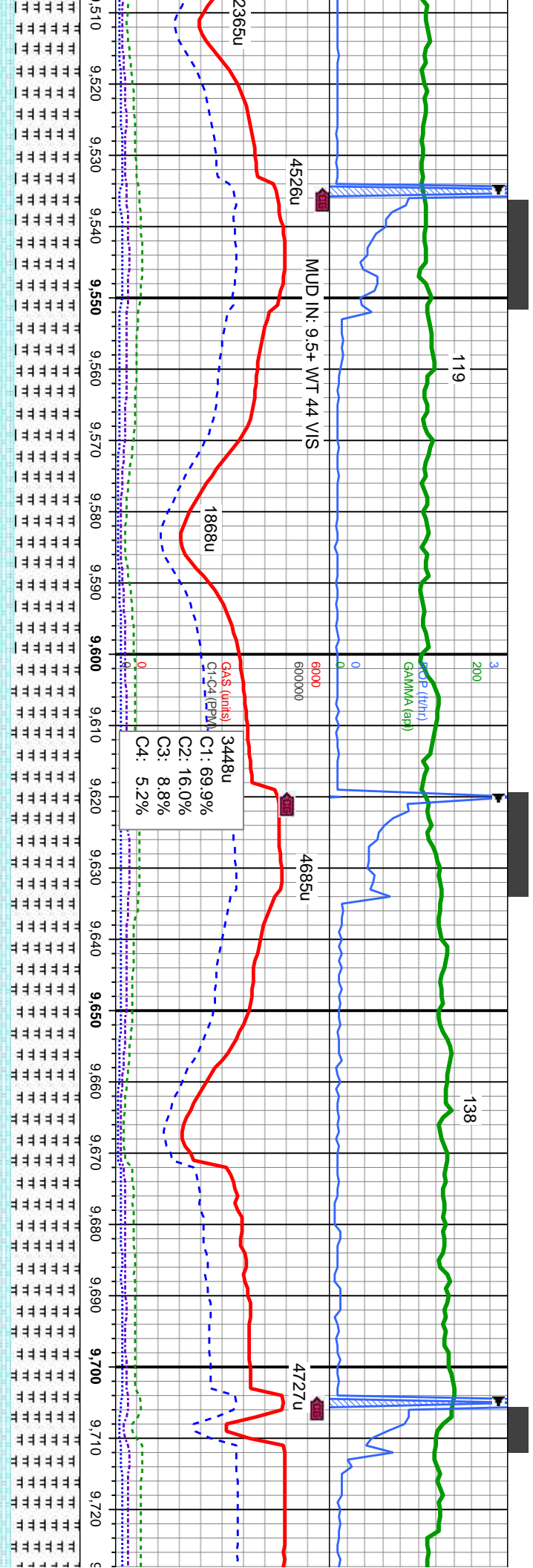






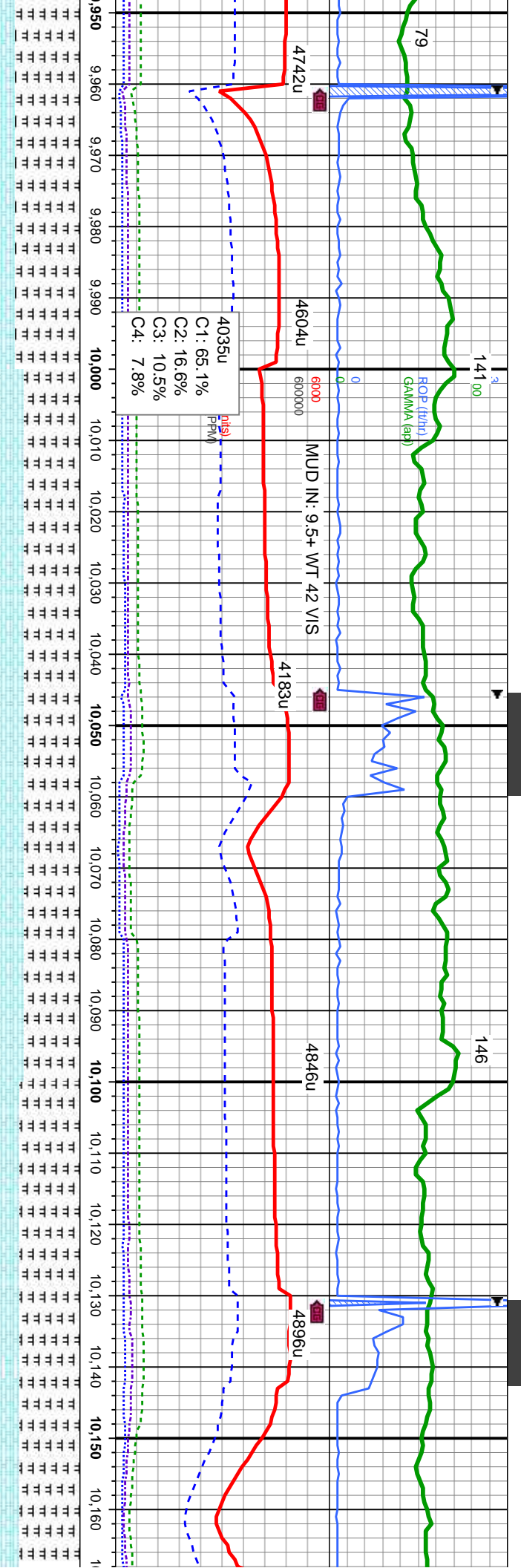












MD: 9,994 '  
TVD: 7,399.94 '  
Inclination: 91.72 °  
Azimuth: 179.28 °  
VS: 2,698.01 '

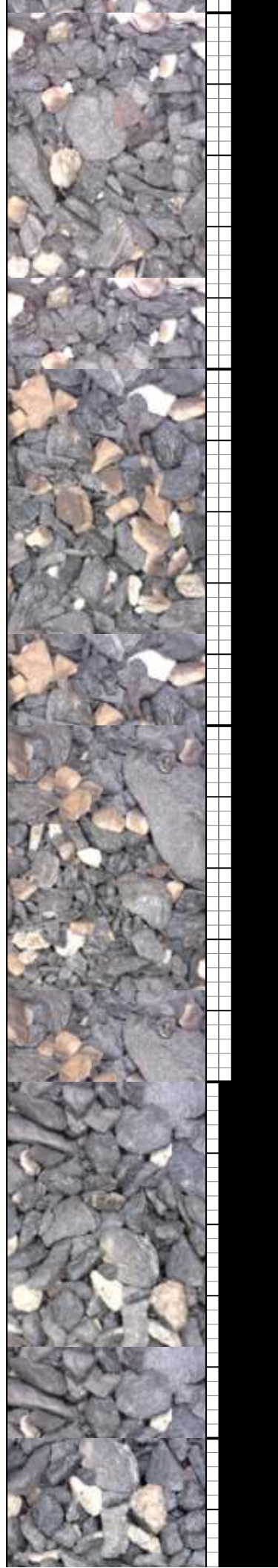
MD: 10,079 '  
TVD: 7,397.86 '  
Inclination: 91.09 °  
Azimuth: 179.15 °  
VS: 2,782.97 '

MD: 10,164 '  
TVD: 7,396.3 '  
Inclination: 90  
Azimuth: 179  
VS: 2,867.94

tex, v calc; CHK: med-dk gy, occ lt gy, sb blkly, fos, tr pyr frags; scat SS cont; fast string bl cut, 7700

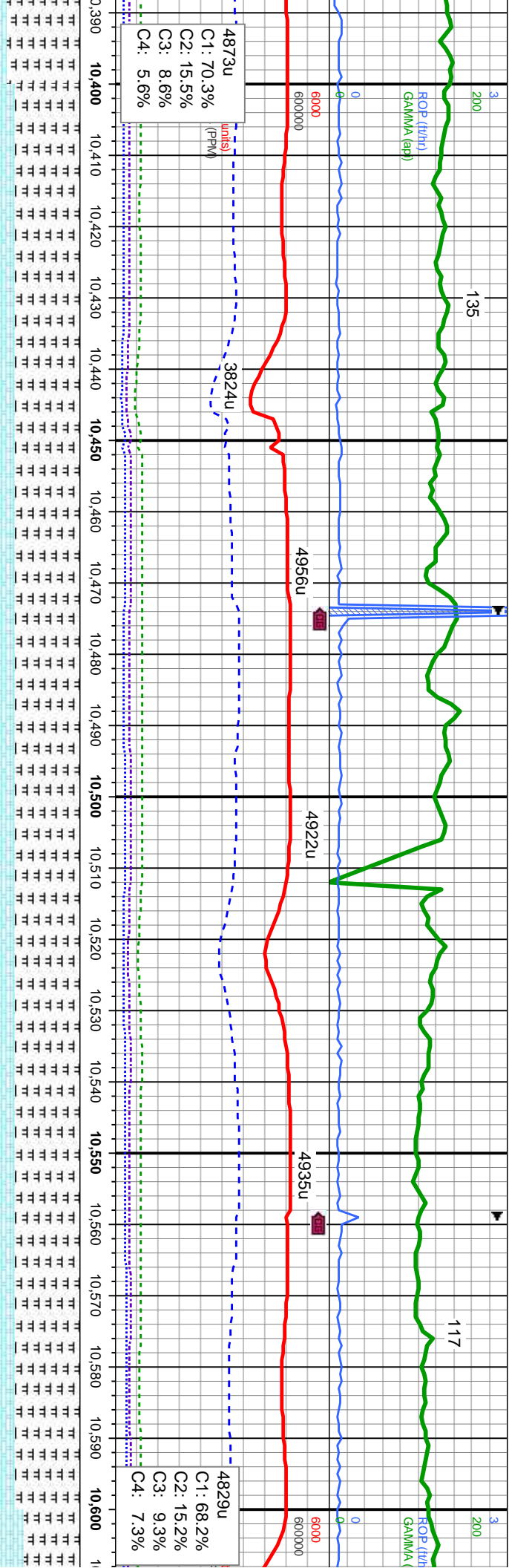
MRLST: med-dk gy, sb blkly, med sft-firm, silty tex, v calc; CHK: med-dk gy, occ lt gy, sb blkly, sft, v calc, reth-wxy tex, scat tr bent, scat inoc fos, tr pyr frags; scat SS cont; fast string bl cut, bright yel-wh ring

MRLST: med-dk gy, sb blkly, med sft-firm, silty tex, v calc; CHK: med-dk gy, occ lt gy, blkly, sft, v calc, reth-wxy tex, scat tr bent, scat inoc fos, tr pyr frags; scat SS cont; bright bl-wh ring









MD: 10,419 '  
TVD: 7,395.58 '  
Inclination: 90.4 °  
Azimuth: 179.88 °  
VS: 3,122.9 '

MD: 10,590 '  
TVD: 7,394.58 '  
Inclination: 90.27 °  
Azimuth: 179.79 °  
VS: 3,293.88 '

10,390 10,400 10,410 10,420 10,430 10,440 10,450 10,460 10,470 10,480 10,490 10,500 10,510 10,520 10,530 10,540 10,550 10,560 10,570 10,580 10,590 10,600

ROP (ft/hr)  
GAMMA (api)  
units (PPM)

4873u  
3824u  
4956u  
4922u  
4935u  
4829u

C1: 70.3%  
C2: 15.5%  
C3: 8.6%  
C4: 5.6%

C1: 68.2%  
C2: 15.2%  
C3: 9.3%  
C4: 7.3%

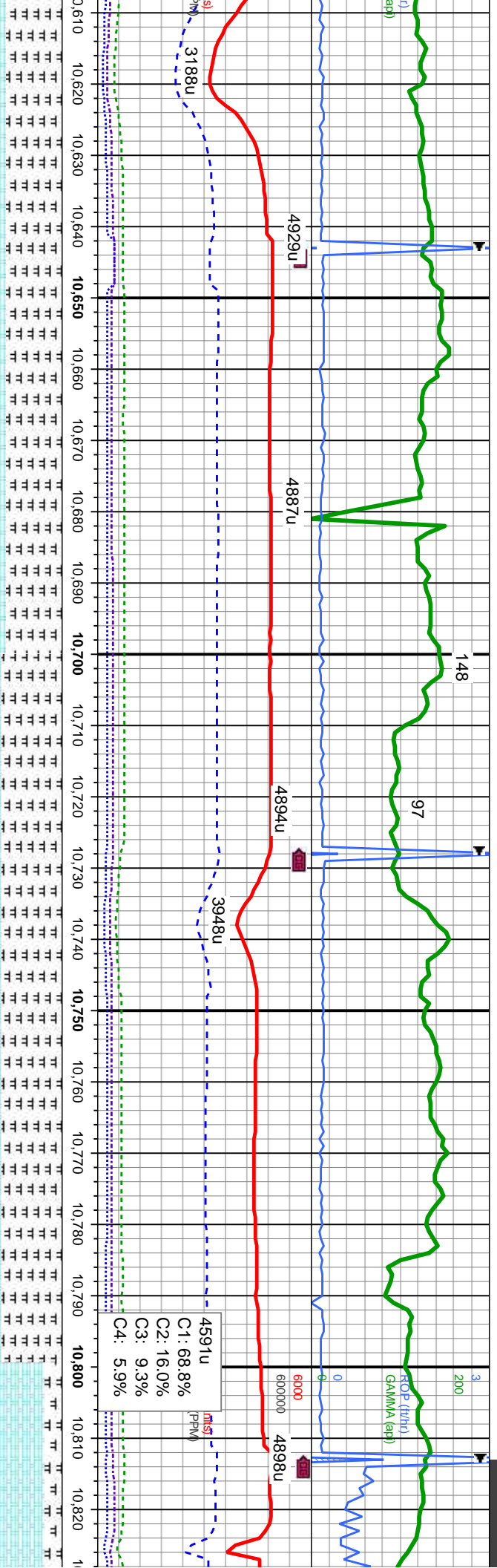
MD: 10,419 '  
TVD: 7,395.58 '  
Inclination: 90.4 °  
Azimuth: 179.88 °  
VS: 3,122.9 '

MD: 10,590 '  
TVD: 7,394.58 '  
Inclination: 90.27 °  
Azimuth: 179.79 °  
VS: 3,293.88 '

MRSLST: med-dk gy, sb blkly, med sft-firm, silty tex, v calc; CHK:lt-med gy, occ dk  
gy, sb blkly, sft, v calc, reth-wxy tex, scat tr bent, scat inoc fos, tr pyr frags; fast  
stmg bl cut, bright yel-wh ring

MRSLST: med-dk gy, sb blkly, med sft-firm, silty tex, v calc; CHK:lt-med gy, occ dk  
sft, v calc, reth-wxy tex, scat tr bent, scat inoc fos, tr pyr frags; fast stmg bl cut, bright yel-whsft, v c  
ring





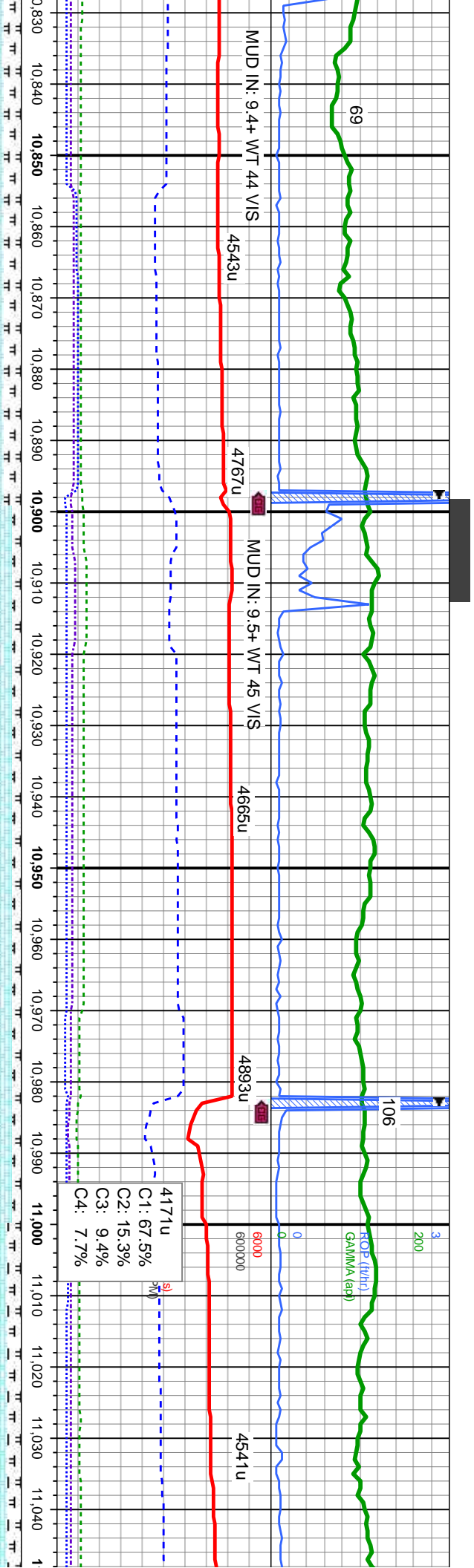
MD: 10,761 '  
TV/D: 7,392.39 '  
Inclination: 91.2 °  
Azimuth: 179.98 °  
VS: 3,464.86 '

med-dk gy, sb blk, med sft-fm, silty tex, v calc, CHK:lt-med gy, occ dk gy, sb blk, sft, v calc, reth-wxy tex, scat tr bent, scat inoc fos,lt pyr frags; fast stmg bl cut, bright yei-wh ring

CHK:lt-med gy, occ d blk, med sft-fm, silty bright yei-wh ring







MD: 10,845 '  
TVD: 7,391.1 '  
Inclination: 90.55 °  
Azimuth: 180.07 °  
VS: 3,548.85 '

MD: 10,931 '  
TVD: 7,390.9 '  
Inclination: 89.72 °  
Azimuth: 180.45 °  
VS: 3,634.85 '

MD: 11,016 '  
TVD: 7,390.79 '  
Inclination: 90.43 °  
Azimuth: 180.56 °  
VS: 3,719.85 '

k gy, sb blkly, sft, mod calc, reth-wxy tex; MRLST: med-dk gy, sb  
tex, v calc; , scat tr bent, scat inoc fos, tr pyr frags; fast stmg bl cut,  
CHK:lt-med gy, occ dk gy, sb blkly, sft, mod calc, reth-wxy tex; MRLST: med-dk gy, sb  
blkly, med sft-fm, silty tex, v calc; , scat tr bent, scat inoc fos, tr pyr frags; fast stmg bl  
cut, brnght bl-wh ring

CHK:lt-med gy, occ dk gy, sb blkly, sft, moc  
med sft-fm, silty tex, v calc; , scat tr bent, s  
77ye-wh ring



11/19/13

154

97

3  
200  
BO (ft/hr)  
GAMMA (api)

6000  
600000

4891u

MUD IN: 9.5+ WT 45

MUD OUT: 9.4+ WT 41 V/S

4930u

4865u

4727u

4891u

MUD IN: 9.5+ WT 45

4065u  
C1: 69.8%  
C2: 15.4%  
C3: 8.9%  
C4: 5.9%

PPM

11,050 11,060 11,070 11,080 11,090 11,100 11,110 11,120 11,130 11,140 11,150 11,160 11,170 11,180 11,190 11,200 11,210 11,220 11,230 11,240 11,250 11,260 1

6700

MD: 11,101 '  
TVD: 7,390.4 '  
Inclination: 90.09 °  
Azimuth: 180.79 °  
VS: 3,804.84 '

MD: 11,186 '  
TVD: 7,390.39 '  
Inclination: 89.93 °  
Azimuth: 180.76 °  
VS: 3,889.84 '

TVD (ft)

MD: 11  
TVD: 7  
Inclinat  
Azimuth  
VS: 3.9

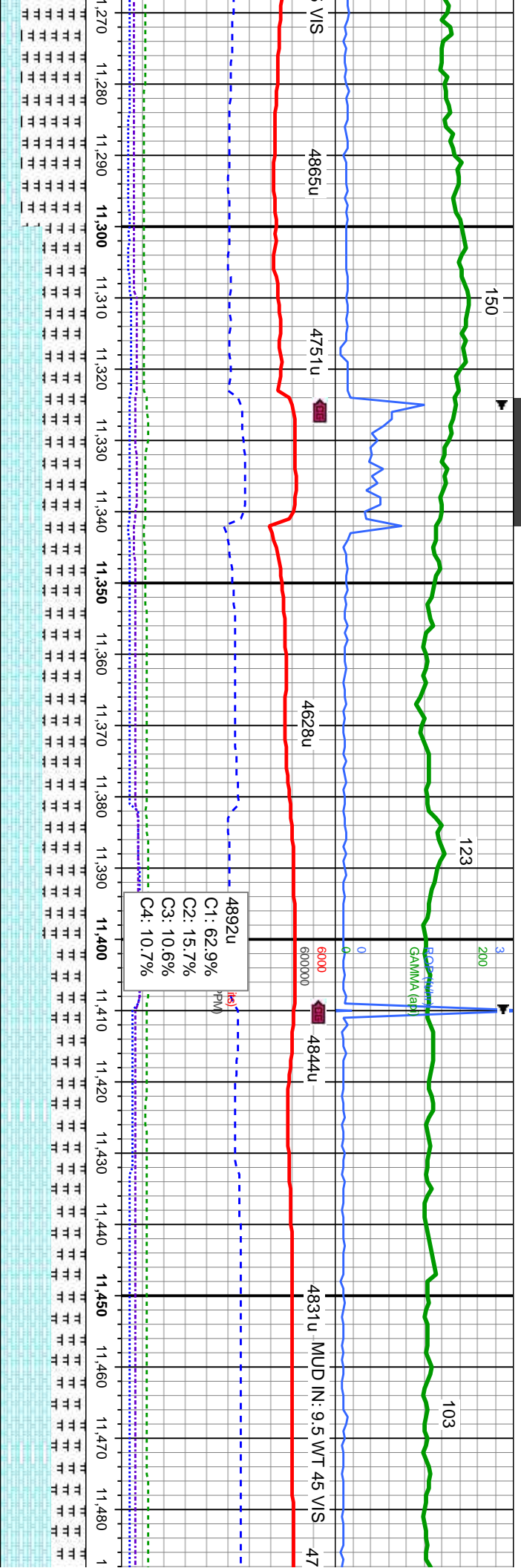
calc, reth-wxy tex; MRLST: med-dk gy, sb blk, cat inoc fos, tr pyr frags; fast sting bl cut, bright

CHK:lt-med gy, occ dk gy, sb blk, sft, mod calc, reth-wxy tex; MRLST: med-dk gy, sb blk, med sft-fm, silty tex, v calc; scat inoc fos, tr pyr frags; fast sting bl cut, bright  
yel-wh ring

MRLST: med-dk gy, sb blk, med sft-fm, silty tex, v calc; CHK sft, v calc, reth-wxy tex, scat tr bent, scat inoc fos, tr pyr frags;  
yel-wh ring







271'  
390.47'  
ion: 89.96°  
n: 180.92°  
74.84'

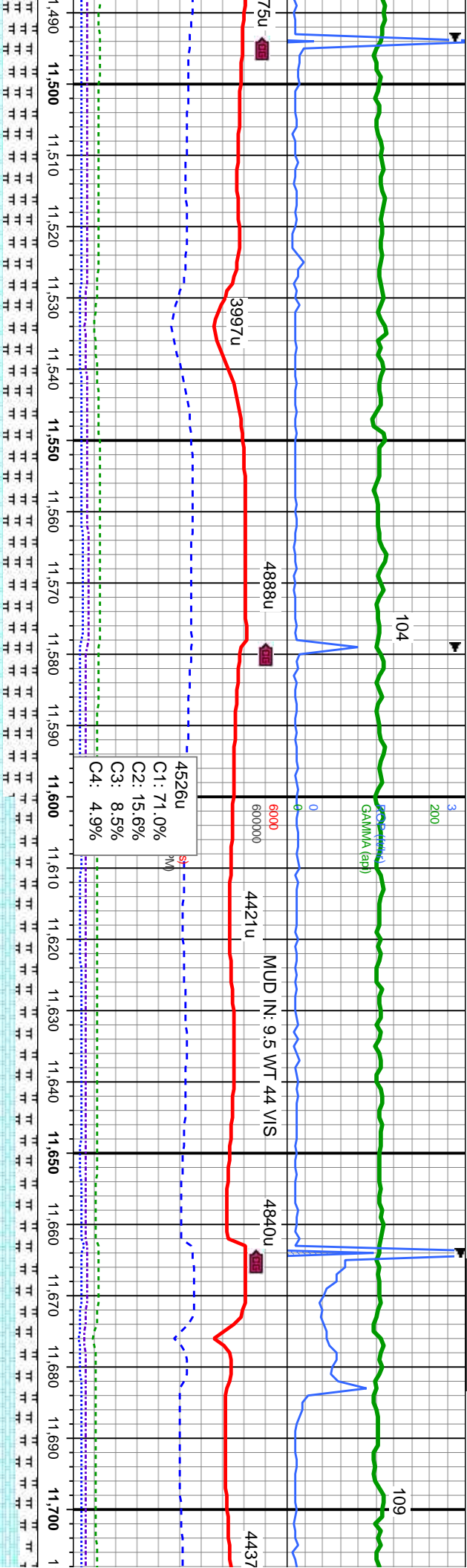
MD: 11,356'  
TVD: 7,391.62'  
Inclination: 88.49°  
Azimuth: 180.35°  
VS: 4,059.83'

TVD (ft)

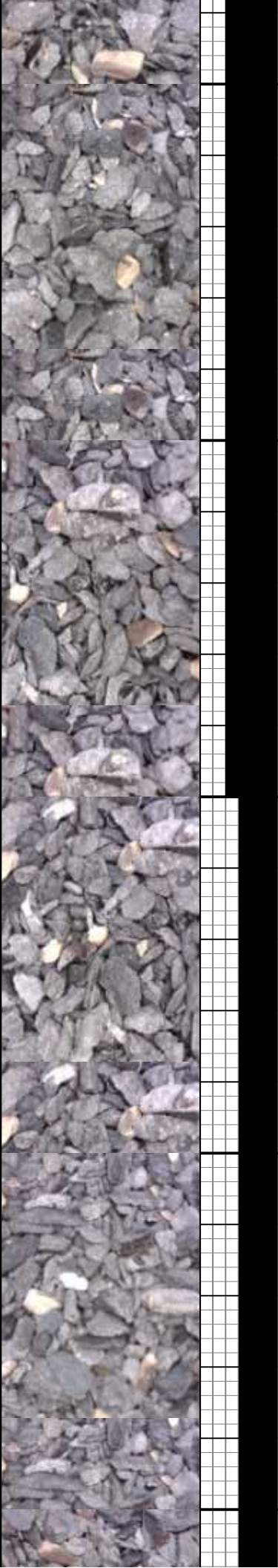
med-dk gy, occ lt gy, sb blk, fast stmg bl cut, bright yel-wh ring  
MRLST: med-dk gy, sb blk, med sft-fim, silty tex, v calc, CHK, med-dk gy, occ lt gy, sb blk, v calc, rth-wxy tex, scat tr bent, scat inoc fos, tr pyr frags, fast stmg bl cut, bright yel-wh ring  
7700

CHK, med-dk gy, occ lt gy, sb blk, sft, rthy-wxy tex, v calc, MRLST: med gy, sb blk, mod sft-fim, sl mot, silty tex, v calc, scat tr bent, scat inoc to pyr frags, fast stmg bl cut, bright yel-wh ring

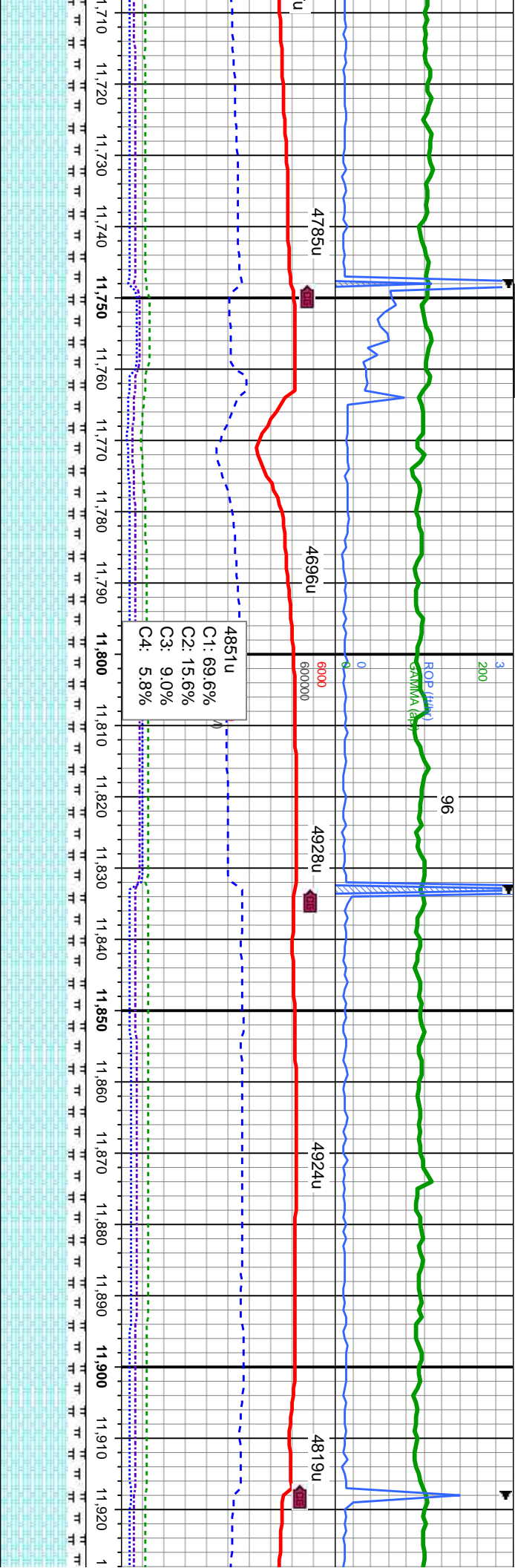




6700	
med-dk gy, ooc lt gy, sb blkly, mod sft-frm, sl mot, silty tex, v calc; scat tr bent, scat inoc fos, tr pyr frags; fast string bl cut, bright yel-wh ring	CHK:med-dk gy, ooc lt gy, sb blkly, sft, rthy-wxy tex, v calc; MRLST: med-dk gy, sb blkly, mod sft-frm, sl mot, silty tex, v calc; scat tr bent, scat inoc fos, tr pyr frags; fast string bl cut, bright yel-wh ring
7700	7700
med-dk gy, ooc lt gy, sb blkly, mod sft-frm, sl mot, silty tex, v calc; scat tr bent, scat inoc fos, tr pyr frags; fast string bl cut, bright yel-wh ring	CHK:med-dk gy, ooc lt gy, sb blkly, sft, rthy-wxy tex, v calc; MRLST: med-dk gy, sb blkly, mod sft-frm, sl mot, silty tex, v calc; scat tr bent, scat inoc fos, tr pyr frags; mod string bl cut, pale yel ring







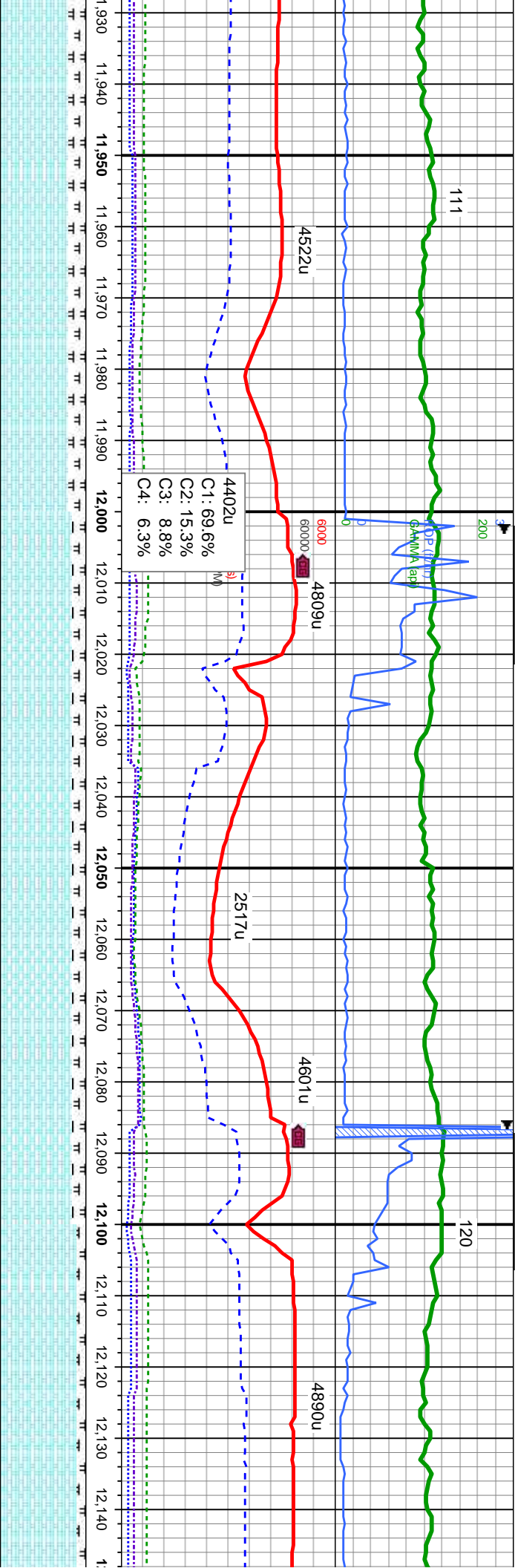
MD: 11,781 '  
TVD: 7,392.86 '  
Inclination: 89.26 °  
Azimuth: 179.55 °  
VS: 4,484.8 '

CHK:med-dk gy, occ lt gy, sb blk, sft, rthy-wxy tex, v calc; MRLST:  
med-dk gy, sb blk, mod sft-fm, sl mot, silty tex, v calc; scat tr bent,  
scat inoc fos, tr pyr frags; mod stmg bl cut, pale yel ring

CHK:med-dk gy, occ lt gy, sb blk, sft, rthy-wxy tex, v calc; MRLST:  
med-dk gy, sb blk, mod sft-fm, sl mot, silty tex, v calc; scat tr bent,  
scat inoc fos, tr pyr frags; mod stmg bl cut, pale yel ring

CHK:med-dk gy, sb blk, sft, rthy-wxy tex, v calc; MRLST:  
med-dk gy, sb blk, mod sft-fm, sl mot, silty tex, v calc; scat tr bent,  
scat inoc fos, tr pyr frags; mod stmg bl cut, pale yel ring





MD: 11,951 '  
TVD: 7,392.07 '  
Inclination: 91.27 °  
Azimuth: 180.95 °  
VS: 4,654.78 '

TVD (ft)

MD: 12,036 '  
TVD: 7,390.52 '  
Inclination: 90.83 °  
Azimuth: 180.67 °  
VS: 4,739.77 '

MD: 12,122 '  
TVD: 7,390.94 '  
Inclination: 88.61 °  
Azimuth: 180.16 °  
VS: 4,825.76 '

sb blkgy, occ lt gy, sb blkgy, sft, rthy-wxy tex, v calc; MRLST: sb blkgy, mod sft-frn, sl mot, silty tex, v calc; scat tr inoc fos, tr pyr frags; fast stmg bl cut, bright bl-wh ring

CHK: med-dk gy, occ lt gy, sb blkgy, sft, rthy-wxy tex, v calc; MRLST: med-dk gy, sb blkgy, mod sft-frn, sl mot, silty tex, v calc; scat tr bent, scat inoc fos, tr pyr frags; fast stmg bl cut, bright bl-wh ring

CHK: med-dk gy, occ lt gy, sb blkgy, mod sft-frn, sl mot, silty tex, v calc; scat tr bent, scat inoc fos, tr pyr frags; fast stmg bl cut, bright bl-wh ring







