

**ANADARKO PETROLEUM CORP - EBUS
DO NOT MAIL - PO BOX 4995
THE WOODLANDS, Texas**

Butterball 30C-15HZ

Majors 42

Post Job Summary **Cement Surface Casing**

Prepared for:
Date Prepared: 9/29/2013
Version: 1

Service Supervisor: BIRCHELL, DEVIN

Submitted by: FINNEY, SEAN

HALLIBURTON

Wellbore Geometry

Job Tubulars					MD		Shoe Joint Length ft
Type	Description	Size in	ID in	Wt lbm/ft	Top ft	Bottom ft	
Casing	9 5/8" Surface Casing	9.63	8.921	36.00	0.00	1,017.00	42.00
Open Hole Section	13 1/2" Open Hole Section		13.500		0.00	1,017.00	0.00

HALLIBURTON

Pumping Schedule

Stage / Plug #	Fluid #	Fluid Type	Fluid Name	Surface Density lbm/gal	Avg Rate bbl/min	Surface Volume	Downhole Volume
1	1	Spacer	Fresh Water Spacer	8.33	2.00	10.0 bbl	10.0 bbl
1	2	Spacer	Mud Flush	8.40	2.00	12.0 bbl	12.0 bbl
1	3	Cement Slurry	SwiftCem B2	14.20	5.00	365.0 sacks	365.0 sacks

Fluids Pumped

Stage/Plug # 1 Fluid 1: Fresh Water Spacer
DUMMY MUD / FLUSH / SPACER SBC MATERIAL

Fluid Density: 8.33 lbm/gal
Fluid Volume: 10.00 bbl
Pump Rate: 2.00 bbl/min

Stage/Plug # 1 Fluid 2: Mud Flush
DUMMY MUD / FLUSH / SPACER SBC MATERIAL
42 gal/bbl Mud Flush III
3.5 lbm/bbl Mud Flush III

Fluid Density: 8.40 lbm/gal
Fluid Volume: 12.00 bbl
Pump Rate: 2.00 bbl/min

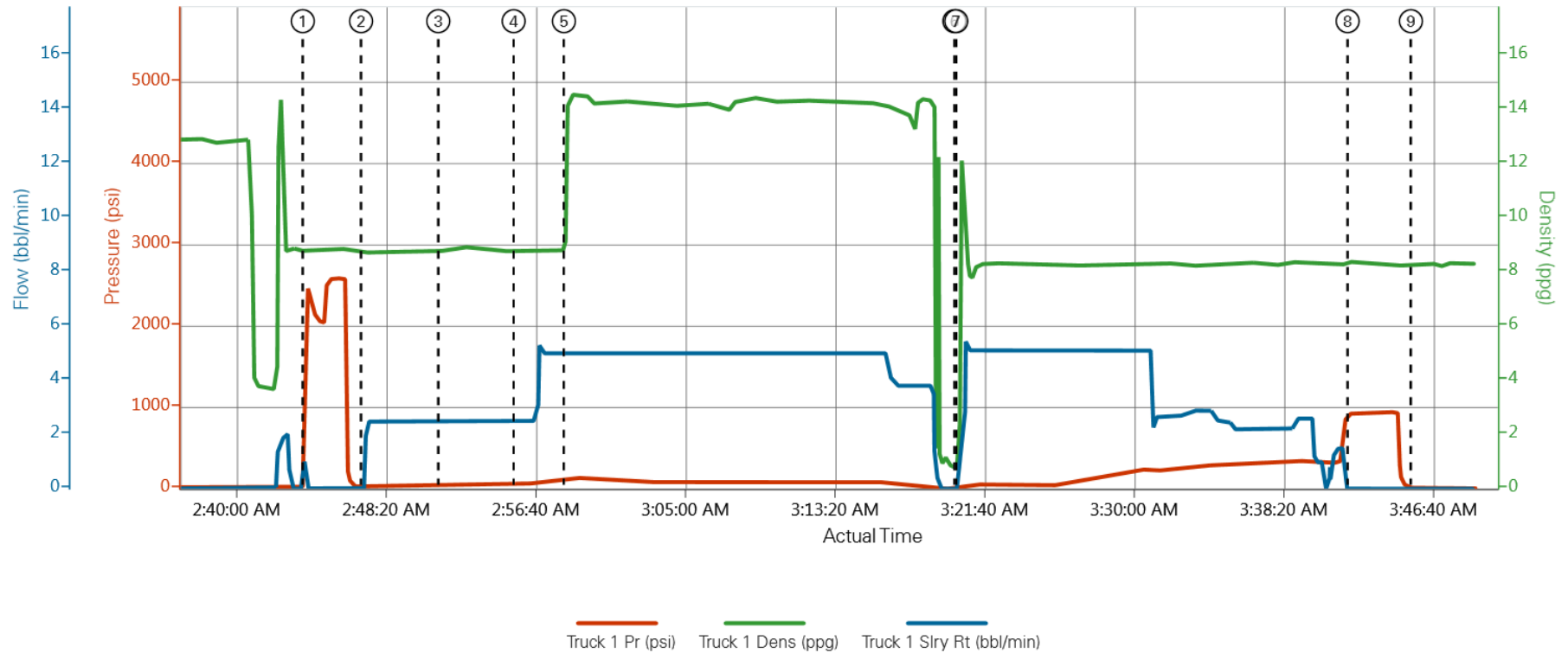
Stage/Plug # 1 Fluid 3: SwiftCem B2
SWIFTCM (TM) SYSTEM

Fluid Weight: 14.20 lbm/gal
Slurry Yield: 1.55 ft³/sack
Total Mixing Fluid: 7.68 Gal
Surface Volume: 365.0 sacks
Sacks: 365.0 sacks
Calculated Fill: 900.00 ft
Calculated Top of Fluid: 0.00 ft

HALLIBURTON

Data Acquisition

Anadarko Petroleum 30C-15HZ



① Test Lines ③ Pump Spacer 2 ⑤ Pump Lead Cement ⑦ Pump Displacement ⑨ End Job
 ② Pump Spacer 1 ④ Pump Spacer 1 ⑥ Drop Top Plug ⑧ Bump Plug

▲ Halliburton | iCem Service®

Created: 2013-09-23 02:05:45 , Version: 1.4.96

Edit

HALLIBURTON

Service Supervisor Reports

Job Log

Date/Time	Chart #	Activity Code	Pump Rate	Cum Vol	Pump		Pressure (psig)		Comments
09/22/2013 21:00		Call Out							Called Out Cement Crew For Anadarko Petroleum Butterball 30C-15HZ Surface
09/22/2013 22:50		Pre-Convoy Safety Meeting							Discussed Hazards On Route To Location, Weather, Other Traffic, Route
09/22/2013 23:00		Depart from Service Center or Other Site							
09/23/2013 00:00		Arrive At Loc							Arrived To Location Talked With Company Rep On Volumes, Rates, Depths
09/23/2013 01:10		Pre-Rig Up Safety Meeting							Discussed Hazards With Cement Crew For Rigging Up Iron and Water Hoses
09/23/2013 01:20		Rig-Up Equipment							
09/23/2013 02:30		Pre-Job Safety Meeting							Discussed Job Procedures With Cement and Rig Crews
09/23/2013 02:40		Rig-Up Completed							Finished Rigging Up To The Floor And Well Head
09/23/2013 02:42		Prime Pumps							Primed Pumps and Lines For Pressure Test
09/23/2013 02:43		Pressure Test						2560.0	Test Pump and Lines to 2560 psi
09/23/2013 02:47		Pump Spacer	2	10				118.0	Pumped 10 bbls Fresh Water Spacer
09/23/2013 02:51		Pump Spacer 1	2	12				125.0	Pumped 12 bbls Mud Flush III Spacer
09/23/2013 02:55		Pump Spacer 2	5	10				131.0	Pumped 10 bbls Fresh Water Spacer
09/23/2013 02:59		Pump Cement	5	100				136.0	Pumped 100 bbls (365sks) 14.2 ppg Slurry, Yield 1.55 ft3/sk Water 7.68 gal/sk
09/23/2013 03:18		Drop Plug							Dropped Plug With Driller Witnessing
09/23/2013 03:18		Clean Lines							Washed Pump and Lines on Plug
09/23/2013 03:18		Pump Displacement							Pumped 74 bbls Fresh Water Displacement
09/23/2013 03:29		Spacer Returns to Surface	5	32					10 bbls Fresh Water, 12 bbls Mud Flush III, 10 bbls Water
09/23/2013 03:34		Cement Returns to Surface	3	64					12 bbls Cement Returns To Surface
09/23/2013 03:35		Slow Rate							Slowed Rate To Bump Plug
09/23/2013 03:43		Bump Plug	3	76				340.0	Bumped Plug With 340 psi Took Pressure to 941 psi
09/23/2013 03:45		Check Floats							Checked Floats, Floats Held With 1 bbls Back To Truck
09/23/2013 03:46		Job Complete							
09/23/2013 03:50		Post-Job Safety Meeting (Pre Rig-Down)							Discussed Hazards With Crew For Rigging Down Iron and Water Hoses
09/23/2013 03:55		Rig-Down Equipment							
09/23/2013 04:30		Rig-Down Completed							
09/23/2013 04:40		Pre-Convoy Safety Meeting							Discussed Hazards On Route To Service Center, Weather, Other Traffic, Route
09/23/2013 04:45		Depart Location for Service Center or Other Site							Thank You For Using Halliburton Energy Services

The Road to Excellence Starts with Safety

Sold To #: 300466		Ship To #: 3107174		Quote #:		Sales Order #: 900765024	
Customer: ANADARKO PETROLEUM CORP - EBUS				Customer Rep: Porter, Bob			
Well Name: Butterball			Well #: 30C-15HZ		API/UWI #:		
Field:		City (SAP): FIRESTONE		County/Parish: Weld		State: Colorado	
Contractor: Majors			Rig/Platform Name/Num: Majors 42				
Job Purpose: Cement Surface Casing							
Well Type: Development Well				Job Type: Cement Surface Casing			
Sales Person: FLING, MATTHEW			Srvc Supervisor: BIRCHELL, DEVIN			MBU ID Emp #: 466993	

Job Personnel

HES Emp Name	Exp Hrs	Emp #	HES Emp Name	Exp Hrs	Emp #	HES Emp Name	Exp Hrs	Emp #
BIRCHELL, DEVIN Ray	0.0	466993	MILLER, GEOFFREY Alan	0.0	460232			

Equipment

HES Unit #	Distance-1 way	HES Unit #	Distance-1 way	HES Unit #	Distance-1 way	HES Unit #	Distance-1 way

Job Hours

Date	On Location Hours	Operating Hours	Date	On Location Hours	Operating Hours	Date	On Location Hours	Operating Hours
TOTAL			Total is the sum of each column separately					

Job

Job Times

Formation Name	Formation Depth (MD)	Top	Bottom	Form Type	Job depth MD	Job depth TVD	Water Depth	Perforation Depth (MD)	From	To	Called Out	Date	Time	Time Zone
				BHST	1017. ft	1017. ft						22 - Sep - 2013	21:00	MST
											On Location	23 - Sep - 2013	00:01	MST
											Job Started	23 - Sep - 2013	02:43	MST
											Job Completed	23 - Sep - 2013	03:45	MST
											Departed Loc	23 - Sep - 2013	04:30	MST

Well Data

Description	New / Used	Max pressure psig	Size in	ID in	Weight lbm/ft	Thread	Grade	Top MD ft	Bottom MD ft	Top TVD ft	Bottom TVD ft
13 1/2" Open Hole Section				13.5				.	1017.		
9 5/8" Surface Casing	Unknown		9.625	8.921	36.		J-55	.	1017.		

Sales/Rental/3rd Party (HES)

Description	Qty	Qty uom	Depth	Supplier
CMT CASING EQUIPMENT BOM	1	JOB		
MILEAGE FOR CEMENTING CREW,ZI	30	MI		
ZI FUEL SURCHG-CARS/PICKUPS<1 1/2TON	30	MI		
KIT,HALL WELD-A	1	EA		
CNTRLZR, 9 5/8x13 3/4,#500-0963-1375	6	EA		
PLUG,CMTG,TOP,9 5/8,HWE,8.16 MIN/9.06 MA	1	EA		
COLLAR-STOP-9 5/8"-FRICTION-HINGED	2	EA		
Description	Qty	Qty uom	Depth	Supplier

BASKET - CEMENT - 9-5/8 CSG X 12-1/4						1	EA		
Fluid Data									
Stage/Plug #: 1									
Fluid #	Stage Type	Fluid Name	Qty	Qty uom	Mixing Density lbm/gal	Yield ft ³ /sk	Mix Fluid Gal/sk	Rate bbl/min	Total Mix Fluid Gal/sk
1	Fresh Water Spacer		10.00	bbl	8.33	.0	.0	2.0	
2	Mud Flush		12.00	bbl	8.4	.0	.0	2.0	
42 gal/bbl		MUD FLUSH III - SBM (528788)							
3.5 lbm/bbl		MUD FLUSH III, 40 LB SACK (101633304)							
3	SwiftCem B2	SWIFTCM (TM) SYSTEM (452990)	365.0	sacks	14.2	1.55	7.68	5.0	7.68
7.68 Gal		FRESH WATER							
Calculated Values		Pressures		Volumes					
Displacement		Shut In: Instant		Lost Returns		Cement Slurry		Pad	
Top Of Cement		5 Min		Cement Returns		Actual Displacement		Treatment	
Frac Gradient		15 Min		Spacers		Load and Breakdown		Total Job	
Rates									
Circulating		Mixing		Displacement		Avg. Job			
Cement Left In Pipe		Amount	42 ft	Reason	Shoe Joint				
Frac Ring # 1 @	ID	Frac ring # 2 @	ID	Frac Ring # 3 @	ID	Frac Ring # 4 @	ID		
The Information Stated Herein Is Correct				Customer Representative Signature					

