



Realtime Logs

Natural Fomation Evaluation
Gamma Ray

Scale:

Company: Kerr-McGee Oil & Gas Onshore LP

1:240

Well: Butterball 30C-15HZ

TRUE VERTICAL DEPTH

Field: Weld County (Kerr McGee)

County Weld County State Colorado

Status:

Final Print

Surface Location:

Latitude: 40° 8' 48.019" N

Longitude: 104° 53' 2.216" W

Other Services:

API Number:

05-123-3787000

Section:10

TWNI: 2N

Range:67W

Permanent Datum (P.D.): Mean Sea Level

Elevation: 5013.00 ft.

Elevations:

Log Measured From:

Kelly Bushing

17.00 ft.

Above P.D.

KB: 17.00 ft.

DF: 5013.00 ft.

Depth Reference:

Driller's Depth

GL:

4996.00 ft.

Interval Logged

Dates

Magnetic Field Reference

Top: 7020.0 ft. Date From: 04/Nov/13 Date To: 10/Nov/13 Dip Angle: 66.85 ° Azi Reference North: True

Bottom: 12517.0 ft. Date To: 10/Nov/13 Total Mag to Reference

Spud Date: 08/Nov/13 Field Strength: 52863.0 nT North Correction: 8.75 °

Borehole Record

Casing Record

Hole Size	From	To	Size	Weight	From	To
13.500 in.	Surface	1017.0 ft.	9.625 in.	36.00 lb/ft	Surface	1009.0 ft.
8.750 in.	1017.0 ft.	7880.0 ft.	7.000 in.	26.00 lb/ft	Surface	7773.0 ft.
6.125 in.	7880.0 ft.	12568.0 ft.				

Mud Record

Deviation Record

Type	From	To	Hole Size	Interval	Inc / Az (Start)	Inc / Az (End)
Water Based Mud	Surface	12568.0 ft.	13.500 in.	Surface	0.0 ° / 0.0 °	0.2 / 265.2 °
			8.500 in.	Vertical/Curve	0.2 / 265.2 °	84.0 ° / 176.5 °
			6.125 in.	Lateral	84.0 ° / 176.5 °	90.1 ° / 181.2 °
					/	/
					/	/
					/	/
					/	/

Acquisition System

Software Version

Other

Advantage 2.20U4 Rtg./ Contractor: XTREME8 / Xtreme Drilling

PATS 6.4.1.34 Job No: 5828794

District / Unit: Rocky Mountains / D&E

INTEQ does not guarantee the accuracy or correctness of interpretations provided in or from this log. Since all interpretations are opinions based on measurements, INTEQ shall under no circumstances be responsible for consequential damages or any other loss, costs, damages or expenses incurred or sustained in connection with the use of any such interpretations. INTEQ disclaims all expressed and implied warranties related to this service. INTEQ's liabilities and obligations shall be governed by INTEQ's Standard Terms and Conditions.

Log Run Summary

LWD Run No.	BHA Run No.	Bit Run No.	Bit Size (in.)	Bit Type	Bit Gauge Length (in.)	Assembly Type	Logged Interval		Bit Depth Interval		Date / Time				Circ. Time (hrs.)
							Top	Bottom	From	To	Start		End		
							(m.)	(m.)	(m.)	(m.)					
1	1	2	8.750	PDC	N/A	Mud Motor	7020.0	7416.0	1017.0	7461.0	04/Nov/13 14:35	04/Nov/13 22:44	29.9		
2	2	3	8.750	PDC	N/A	Mud Motor	7416.0	7841.0	7461.0	7880.0	05/Nov/13 14:18	06/Nov/13 08:23	12:45		
3	3	4	6.125	PDC	N/A	Mud Motor	7841.0	12517.0	7880.0	12568.0	08/Nov/13 04:45	10/Nov/13 06:08	49.42		

Crew

Name	Arrive	Depart	Name	Arrive	Depart	Name	Arrive	Depart
	Wellsite	Wellsite		Wellsite	Wellsite		Wellsite	Wellsite
Andrew Overbey	02/Nov/13	04/Nov/13	Nick Roosen	04/Nov/13	07/Nov/13	Shirley Arimah	07/Nov/13	10/Nov/13
Kevin Sheridan	02/Nov/13	10/Nov/13						

Mud Properties Record

Date / Time	LWD Run No.	Measured Depth (m.)	Mud Type	Density (sg)	Viscosity (cp)	pH	Fluid Loss (cc)	Oil / Water	Source	Total Chlorides (ppm)	K+ (%)
11/04/13 10:20	1	7400.0	Water Based Mud	8.5	27	9.0	N/A	0/100	Pits	1600	N/A
11/06/13 22:30	2	7790.0	Water Based Mud	10.0	41	9.0	N/A	0/100	Pits	1900	N/A
11/09/13 21:52	3	12120.0	Water Based Mud	9.6	40	9.0	N/A	4/100	Pits	2600	N/A

Mnemonics

Curve	Description	Units
GRAX	Gamma Ray Apparent, 0.5 ft. Avg	API
TCDX	Downhole Temperature	degF
ROP_AVG	Rate of Penetration, 3.0 ft. Avg	ft/hr
WOB_AVG	Weight on Bit, 1.0 ft. Avg	klbs

Equipment and Service Data

LWD Run No.	Tool	Serial Number	Measurement	Bit Offset (m.)	Max O.D. (in.)	Min I.D. (in.)
1	DIR	12546374	Directional	46.81	6.750	3.250
1	SRIG	12613300	Gamma	43.43	6.750	3.250
2	DIR	12546374	Directional	43.34	6.750	3.250
2	SRIG	12613300	Gamma	39.96	6.750	3.250
3	DIR	12617354	Directional	54.93	4.750	2.480
3	SRIG	12578112	Gamma	51.55	4.750	2.480

Service and Tool Mnemonics

Mnemonic	Name	Description
DIR	Directional	Wellbore directional survey
SRIG	Inclination and Gamma	Probe based gamma ray and inclination module

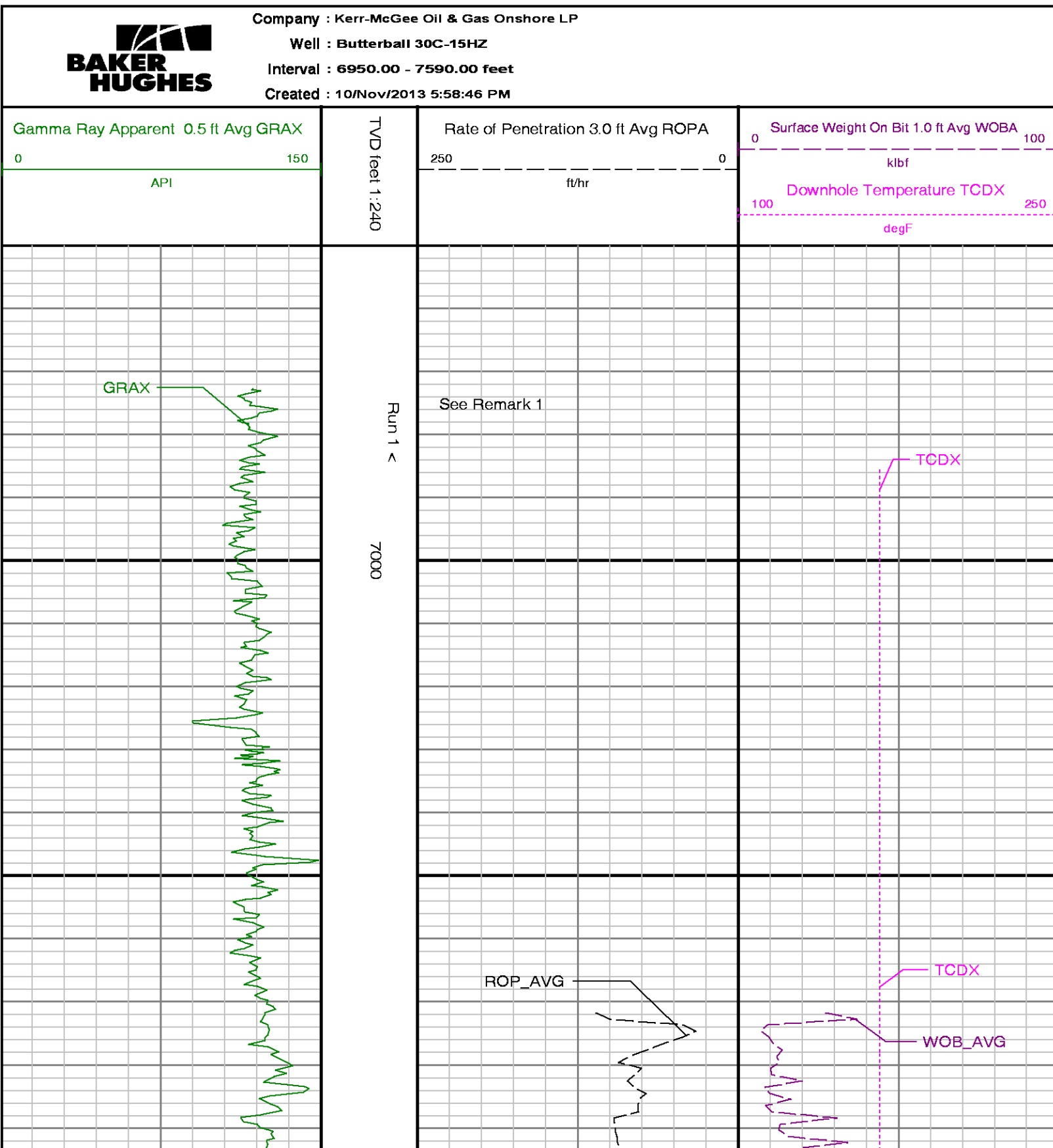
Comments

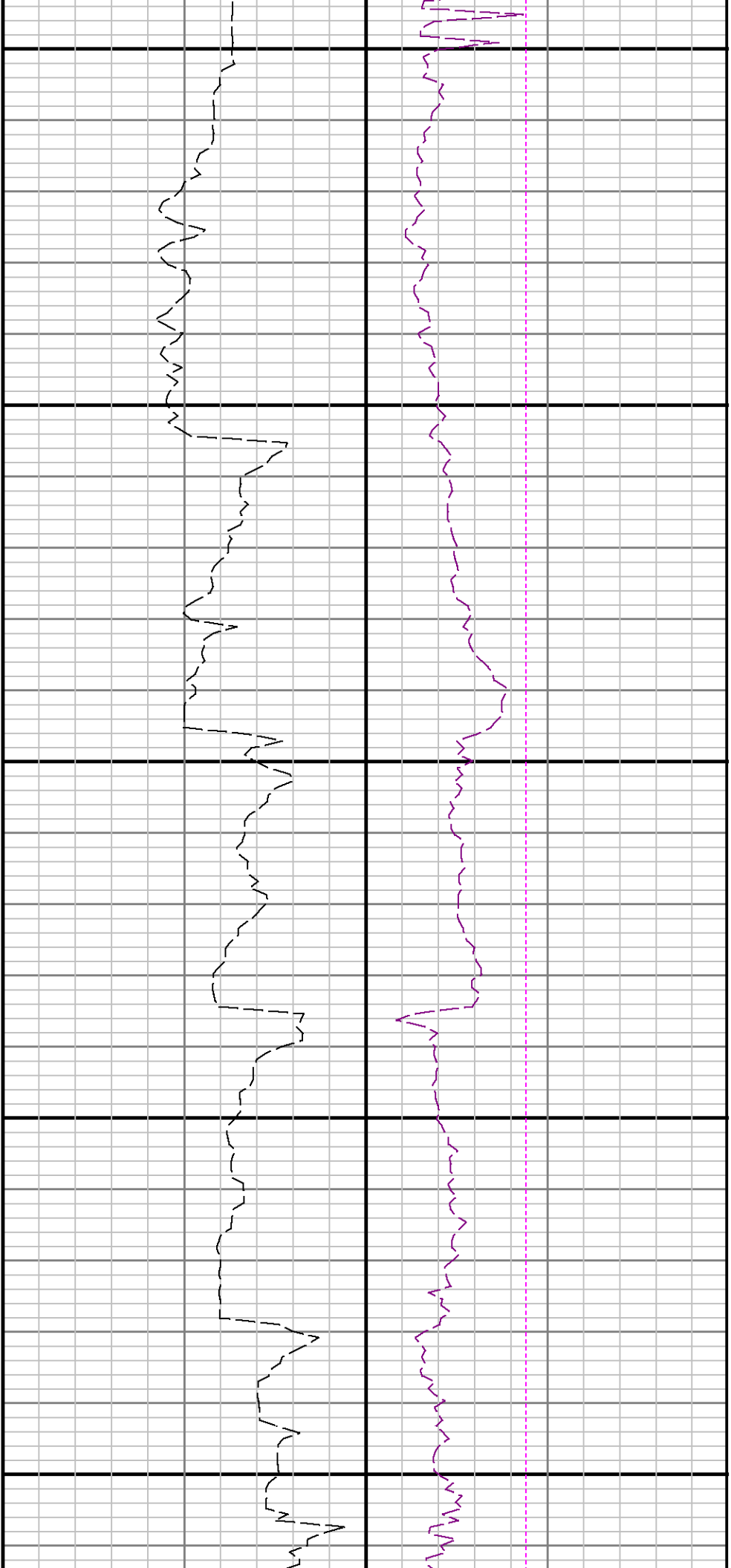
(1) Baker Hughes INTEQ run 1 and run 2 utilized 6 1/2 inch NaviTrak services (Gamma Ray and Directional) behind an 8 3/4 inch bit and steerable assembly from 1017 to 7880 feet MD (1017 to 7575 feet TVD)
(2) Baker Hughes INTEQ run 3 utilized 4 3/4 inch NaviTrak services (Gamma Ray and Directional) behind an 6 1/8 inch bit and steerable assembly from 7880 to 12568 feet MD (7575 to 7589 feet TVD)

Remarks

Number	Measured Depth (m.)	Hole Section (in.)	LWD Run No.	Remark
1	7020	8.750	1	The interval from Surface to 7020 feet MD (6972 feet TVD) was logged not logged due to Baker Hughes logging services began at the top of the curve section.
2	7181	8.750	2	The interval from 7841 to 7880 feet MD (7571 to 7575 feet TVD) was logged up to 16 hours after being drilled due to a trip out of

2	7481	8.750	2	the hole to pick up curve BHA assembly.
3	7571	8.750	3	The interval from 7841 to 7880 feet MD (7571 to 7575 feet TVD) was logged up to 45 hours after being drilled due to a trip out of the hole for casing and cement operations.
4	11956	6.125	3	The interval from 12517 to 12568 feet MD (7589 to 7589 feet TVD) was not logged due to sensor offsets to bit at TD.

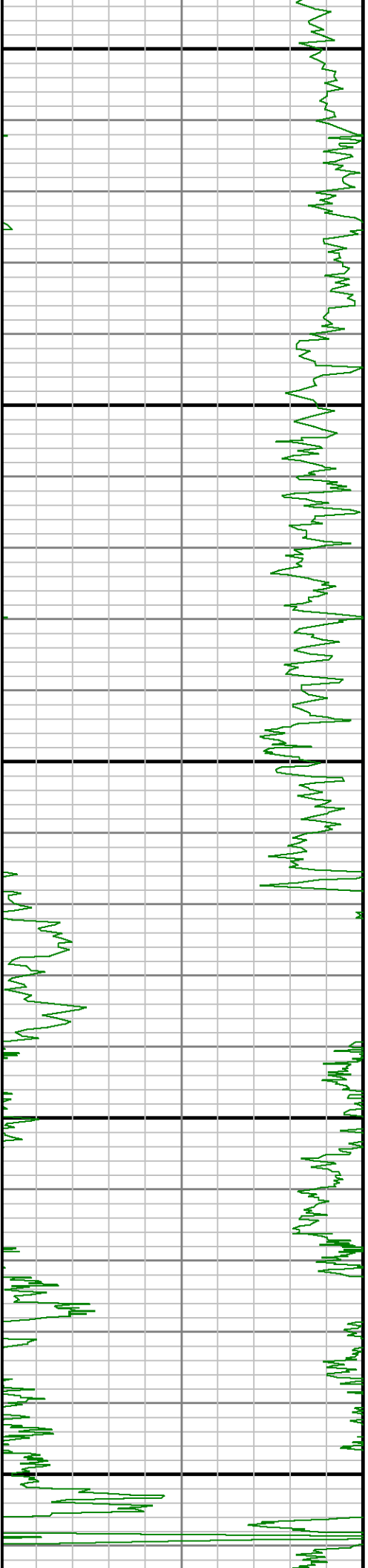


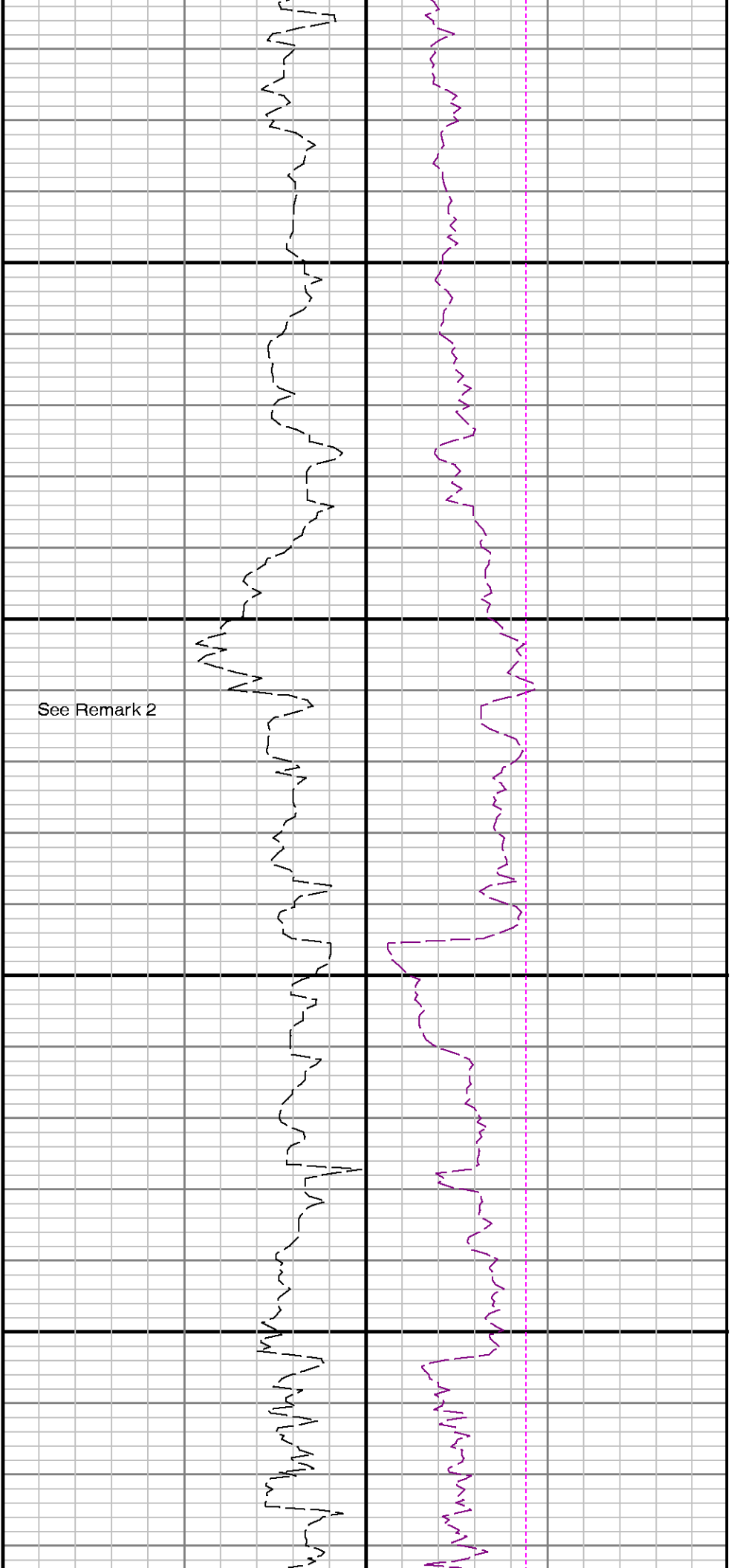


7100

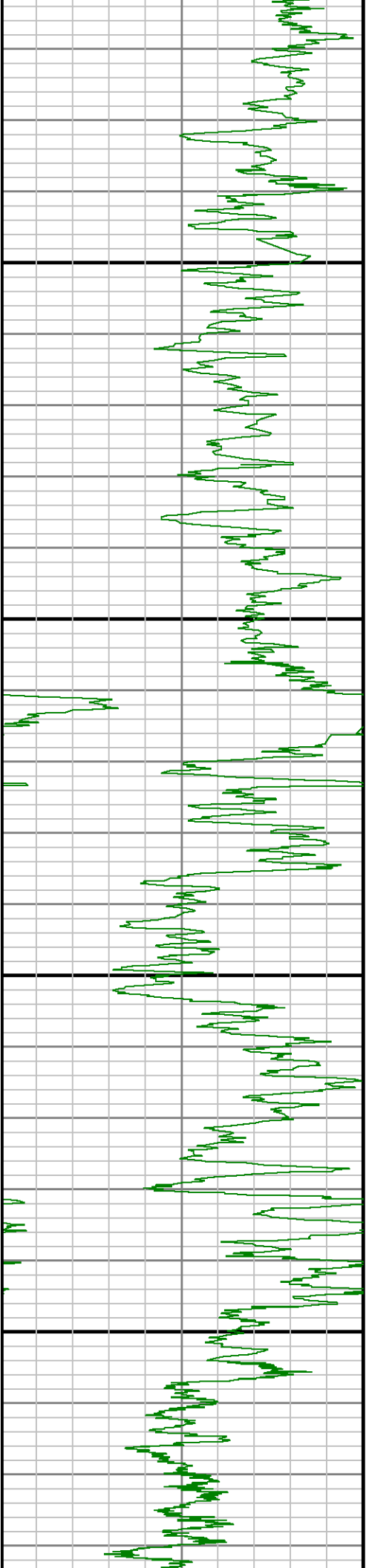
7200

7300

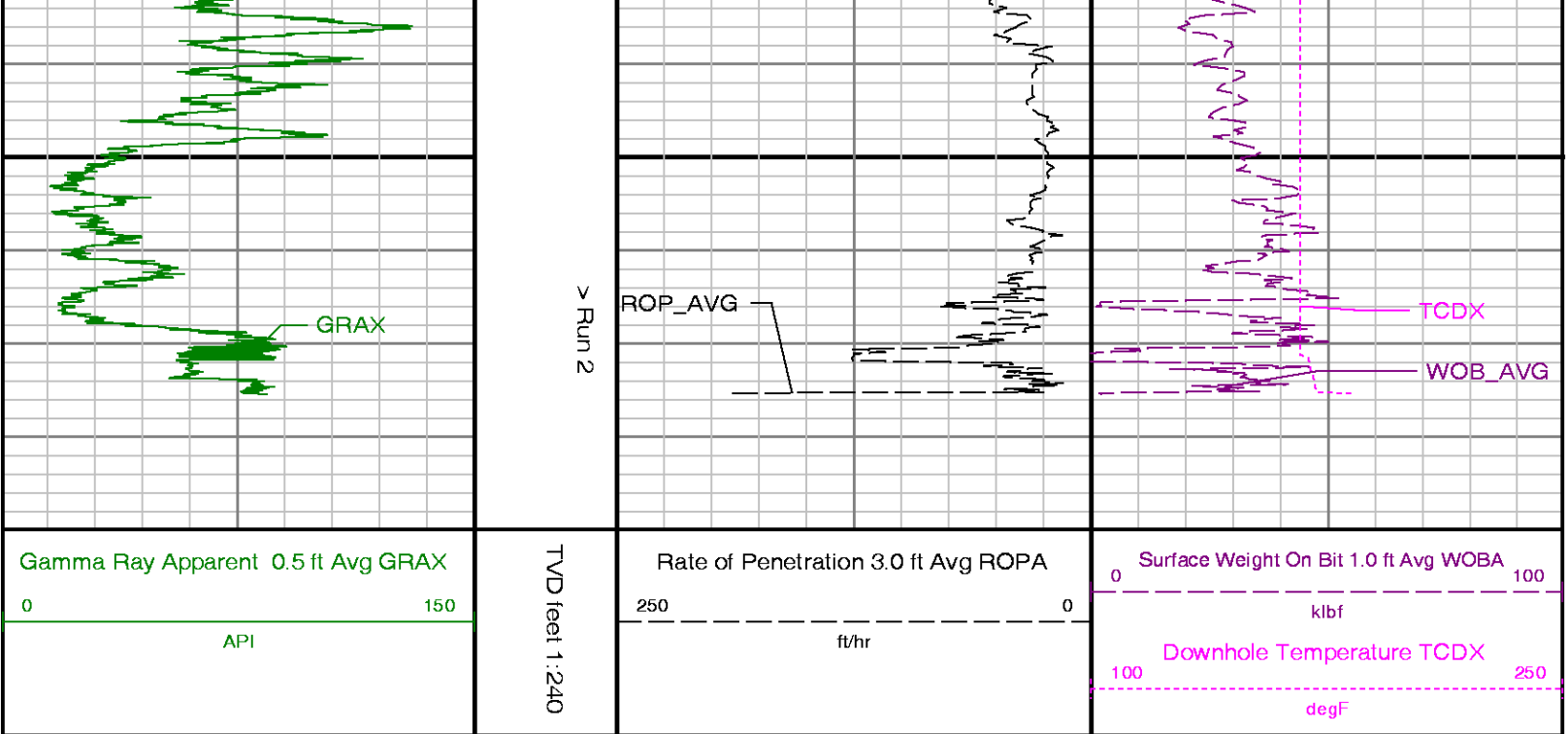




Run 1 > < Run 2
7400



7500



ADVANTAGE Final Survey Listing												
Operator : Kerr-McGee Oil & Gas Onshore LP Field : Weld County (Kerr McGee) API No : 051233787000												
Well : Butterball 30C-15HZ Rig : XTREMES Job : 5828794												
Wellbore : Butterball 30C-15HZ Orig Hole												
Well Origin												
Latitude		40.1467 deg				Longitude		-104.8839 deg				
North Reference		True				Drill Depth Zero		NULL				
Vertical Datum is		Mean Sea Level				Vertical Datum to DDZ		5013.00 ft				
Vertical Section North		0.00 ft				Vertical Section East		0.00 ft				
Vertical Section Azimuth		180.3830 deg				Vertical Section Depth		0.00ft				
Grid Convergence		0.0000 deg				Magnetic Declination		8.7500 deg				
Total Correction		8.7500 deg				TVD Calculation Method		Minimal Curvature				
D-Row Calculation		Magcorr1				Local Magnetic Field		52863 nT				
Local Magnetic Dip Angle		66.8500 deg				Local Gravity Field		9.802 m/s^2				
Tie	MD ft	Incl deg	Azim deg	North ft	East ft	TVD ft	VS ft	Incr VS ft	Crs Len ft	DLS deg/100ft	Build deg/100ft	Turn deg/100ft

	0.00	0.0000	0.0000	0.00	0.00	0.00	0.00	0.00				
	17.00	0.0000	71.1800	0.00	0.00	17.00	0.00	0.00	17.00	0.00	0.00	418.71
	117.00	0.3600	71.1800	0.10	0.30	117.00	-0.10	0.31	100.00	0.36	0.36	0.00
	217.00	0.3300	127.7000	0.03	0.82	217.00	-0.03	0.84	100.00	0.33	-0.03	56.52
	317.00	0.0300	4.7700	-0.12	1.05	317.00	0.12	1.12	100.00	0.35	-0.30	-122.93
	417.00	0.0400	246.1000	-0.11	1.02	417.00	0.10	1.15	100.00	0.06	0.01	-118.67
	517.00	0.1700	114.0100	-0.19	1.13	517.00	0.18	1.28	100.00	0.20	0.13	-132.09
	617.00	0.1400	319.6100	-0.15	1.18	617.00	0.15	1.34	100.00	0.30	-0.03	-154.40
	717.00	0.1900	53.8400	0.04	1.24	717.00	-0.05	1.54	100.00	0.24	0.05	94.23
	817.00	0.1600	255.1700	0.10	1.24	817.00	-0.11	1.60	100.00	0.34	-0.03	-158.67
U	917.00	0.1700	266.6300	0.06	0.95	917.00	-0.06	1.89	100.00	0.03	0.01	11.46
	969.00	0.2100	255.3100	0.03	0.78	969.00	-0.78	2.06	52.00	0.11	0.08	-21.77
	1074.00	0.3700	311.7700	0.20	0.35	1073.99	-0.21	2.54	105.00	0.29	0.15	53.77
	1258.00	0.7300	293.8700	1.07	-1.17	1257.99	-1.07	4.28	184.00	0.21	0.20	-9.73
	1440.00	1.0200	288.3200	2.05	-3.77	1439.96	-2.03	7.06	182.00	0.17	0.16	-3.05
	1624.00	1.0900	269.9100	2.56	-7.07	1623.93	-2.52	10.40	184.00	0.19	0.04	-10.01
	1715.00	2.7700	261.2900	2.23	-10.11	1714.88	-2.16	13.46	91.00	1.87	1.85	-9.47

1807.00	4.0100	260.2000	1.35	-15.48	1806.72	-1.24	18.90	92.00	1.35	1.35	-1.18	
1898.00	5.2500	247.2700	-0.80	-22.46	1897.42	0.96	26.20	91.00	1.77	1.36	-14.21	
1990.00	6.0300	249.0000	-4.16	-30.85	1988.97	4.37	35.24	92.00	0.87	0.85	1.88	
2081.00	7.4800	262.5900	-6.64	-41.19	2079.35	6.92	45.87	91.00	2.36	1.59	14.93	
2173.00	7.6400	260.6800	-8.40	-53.16	2170.55	8.76	57.97	92.00	0.32	0.17	-2.08	
2265.00	9.1400	263.2000	-10.26	-66.45	2261.56	10.70	71.39	92.00	1.68	1.63	2.74	
2357.00	11.4000	266.2500	-11.72	-82.78	2352.08	12.27	87.79	92.00	2.53	2.46	3.32	
2448.00	12.9100	262.0400	-13.71	-101.82	2441.04	14.40	106.94	91.00	1.92	1.66	-4.63	
2539.00	14.1100	262.1400	-16.64	-122.88	2529.52	17.46	128.20	91.00	1.32	1.32	0.11	
2630.00	14.9400	262.2200	-19.74	-145.49	2617.61	20.72	151.02	91.00	0.91	0.91	0.09	
2722.00	15.5200	260.9700	-23.28	-169.40	2706.38	24.41	175.18	92.00	0.72	0.63	-1.36	
2813.00	15.2800	263.4000	-26.57	-193.33	2794.11	27.86	199.35	91.00	0.76	-0.26	2.67	
2899.00	15.7700	268.8700	-28.10	-216.28	2876.98	29.55	222.34	86.00	1.79	0.57	6.36	
2984.00	14.7400	268.3800	-28.64	-238.63	2958.98	30.23	244.70	85.00	1.22	-1.21	-0.58	
3069.00	15.4400	271.1400	-28.72	-260.76	3041.05	30.46	266.83	85.00	1.18	0.82	3.25	
3154.00	13.6200	271.1100	-28.30	-282.08	3123.33	30.18	288.15	85.00	2.14	-2.14	-0.04	
3239.00	14.8500	268.7900	-28.33	-302.97	3205.72	30.36	309.05	85.00	1.59	1.45	-2.73	
3324.00	15.6100	270.6900	-28.43	-325.30	3287.73	30.60	331.37	85.00	1.07	0.89	2.24	
3409.00	13.6300	270.9900	-28.12	-346.75	3369.98	30.43	352.83	85.00	2.33	-2.33	0.35	
3495.00	11.5800	261.7600	-29.18	-365.43	3453.91	31.62	371.53	86.00	3.33	-2.38	-10.73	
3580.00	11.1200	258.8100	-31.99	-381.91	3537.25	34.54	388.26	85.00	0.87	-0.54	-3.47	
3665.00	10.3400	262.2900	-34.61	-397.51	3620.76	37.26	404.08	85.00	1.19	-0.92	4.09	
3751.00	8.4600	261.9400	-36.53	-411.43	3705.60	39.28	418.12	86.00	2.19	-2.19	-0.41	
3836.00	6.8300	259.7000	-38.31	-422.59	3789.84	41.13	429.43	85.00	1.95	-1.92	-2.64	
3921.00	5.3100	260.2900	-39.88	-431.44	3874.37	42.76	438.41	85.00	1.79	-1.79	0.69	
4006.00	4.1400	265.0500	-40.80	-438.37	3959.08	43.73	445.41	85.00	1.45	-1.38	5.60	
4092.00	3.1400	271.2900	-41.02	-443.82	4044.90	43.99	450.86	86.00	1.25	-1.16	7.26	
4177.00	1.9500	272.2400	-40.91	-447.59	4129.82	43.90	454.64	85.00	1.40	-1.40	1.12	
4262.00	0.1700	274.5200	-40.84	-449.17	4214.80	43.85	456.21	85.00	2.09	-2.09	2.68	
4432.00	0.4000	258.0100	-40.95	-450.00	4384.80	43.95	457.05	170.00	0.14	0.14	-9.71	
4688.00	1.1400	9.3000	-38.62	-450.46	4640.78	41.63	459.42	256.00	0.52	0.29	43.47	
4773.00	0.6100	94.1600	-37.82	-449.87	4725.77	40.82	460.41	85.00	1.46	-0.62	99.84	
5029.00	1.6800	230.4900	-40.30	-451.41	4981.74	43.32	463.34	256.00	0.84	0.42	53.25	
Tie	MD ft	Incl deg	Azim deg	North ft	East ft	TVD ft	VS ft	Incr VS ft	Crs Len ft	DLS deg/100ft	Build deg/100ft	Turn deg/100ft
5114.00	0.7600	308.1700	-40.75	-452.81	5066.72	43.78	464.81	85.00	1.99	-1.08	91.39	
5199.00	0.5800	310.4400	-40.12	-453.58	5151.72	43.15	465.80	85.00	0.21	-0.21	2.67	
5454.00	0.5700	245.3100	-39.81	-455.72	5406.71	42.86	467.96	255.00	0.24	-0.00	-25.54	
5710.00	1.1300	261.3200	-40.73	-459.37	5662.68	43.80	471.72	256.00	0.24	0.22	6.25	
5795.00	0.3000	36.5600	-40.67	-460.07	5747.67	43.75	472.42	85.00	1.60	-0.98	159.11	
6051.00	2.0000	270.6100	-40.09	-464.13	6003.63	43.19	476.53	256.00	0.86	0.66	-49.20	
6135.00	1.6500	303.3000	-39.41	-466.61	6087.58	42.53	479.10	84.00	1.29	-0.42	38.92	
6221.00	0.8000	340.5500	-38.16	-467.85	6173.57	41.29	480.86	86.00	1.31	-0.99	43.31	
6306.00	0.4000	289.1000	-37.51	-468.32	6258.56	40.64	481.67	85.00	0.75	-0.47	-60.53	
6391.00	0.8600	106.9300	-37.60	-467.99	6343.56	40.72	482.01	85.00	1.48	0.54	209.21	
6561.00	0.6600	329.2000	-37.13	-467.28	6513.55	40.25	482.87	170.00	0.84	-0.12	-81.02	
6646.00	0.9600	93.9700	-36.75	-466.82	6598.55	39.87	483.46	85.00	1.70	0.35	146.79	
6731.00	1.3800	99.1800	-36.97	-465.09	6683.53	40.08	485.19	85.00	0.51	0.49	6.13	
6817.00	0.4000	105.4300	-37.21	-463.78	6769.52	40.31	486.53	86.00	1.14	-1.14	7.27	
6902.00	0.6000	164.9100	-37.72	-463.38	6854.52	40.82	487.18	85.00	0.62	0.24	69.98	
6971.00	1.6600	180.0200	-39.07	-463.29	6923.50	42.17	488.53	69.00	1.58	1.54	21.90	
6987.00	1.9900	182.3000	-39.58	-463.30	6939.49	42.67	489.04	16.00	2.11	2.06	14.25	
7030.00	3.5500	171.8400	-41.64	-463.14	6982.44	44.74	491.11	43.00	3.80	3.63	-24.33	
7073.00	6.5300	170.0100	-45.37	-462.53	7025.27	48.46	494.88	43.00	6.94	6.93	-4.26	
7115.00	10.1800	170.9100	-51.39	-461.53	7066.82	54.47	500.98	42.00	8.70	8.69	2.14	
7157.00	12.9900	170.9800	-59.72	-460.20	7107.96	62.79	509.42	42.00	6.69	6.69	0.17	
7200.00	16.0500	174.1700	-70.41	-458.84	7149.58	73.47	520.19	43.00	7.35	7.12	7.42	
7243.00	19.1600	174.2700	-83.34	-457.53	7190.56	86.40	533.20	43.00	7.23	7.23	0.23	
7285.00	22.1500	173.6600	-98.07	-455.97	7229.86	101.12	548.01	42.00	7.14	7.12	-1.45	
7328.00	25.6400	173.7100	-115.38	-454.05	7269.17	118.42	565.43	43.00	8.12	8.12	0.12	
7370.00	28.5400	173.7700	-134.39	-451.97	7306.55	137.41	584.55	42.00	6.91	6.90	0.14	
7413.00	30.9100	173.7000	-155.59	-449.64	7343.89	158.59	605.87	43.00	5.51	5.51	-0.16	
7459.00	34.6900	173.5100	-180.35	-446.86	7382.55	183.33	630.78	46.00	8.22	8.22	-0.41	

7501.00	38.9200	171.8600	-205.29	-443.64	7416.17	208.25	655.94	42.00	10.34	10.07	-3.93	
7543.00	43.6200	170.0200	-232.64	-439.26	7447.73	235.57	683.63	42.00	11.56	11.19	-4.38	
7585.00	49.5500	168.0200	-262.57	-433.43	7476.59	265.46	714.12	42.00	14.54	14.12	-4.76	
7627.00	55.4400	167.0900	-295.08	-426.24	7502.15	297.93	747.43	42.00	14.13	14.02	-2.21	
7669.00	61.5700	166.9700	-329.97	-418.20	7524.08	332.75	783.22	42.00	14.60	14.60	-0.29	
7711.00	67.6700	169.8100	-367.12	-410.59	7542.08	369.85	821.15	42.00	15.75	14.52	6.76	
7753.00	74.1900	172.0700	-406.30	-404.36	7555.79	408.99	860.82	42.00	16.33	15.52	5.38	
7797.00	79.7000	174.4000	-448.84	-399.33	7565.73	451.50	903.66	44.00	13.54	12.52	5.30	
7835.00	83.9600	176.4900	-486.33	-396.34	7571.13	488.97	941.26	38.00	12.46	11.21	5.50	
7948.00	88.5200	175.7100	-598.79	-388.67	7578.54	601.38	1053.99	113.00	4.09	4.04	-0.69	
8033.00	89.8700	176.4700	-683.58	-382.88	7579.73	686.13	1138.98	85.00	1.82	1.59	0.89	
8118.00	90.4300	177.8400	-768.48	-378.66	7579.51	770.99	1223.98	85.00	1.74	0.66	1.61	
8288.00	90.6700	180.7900	-938.44	-376.63	7577.88	940.93	1393.95	170.00	1.74	0.14	1.74	
8459.00	89.3500	180.9900	-1109.41	-379.28	7577.85	1111.92	1564.94	171.00	0.78	-0.77	0.12	
8629.00	89.7500	180.7600	-1279.39	-381.88	7579.18	1281.91	1734.94	170.00	0.27	0.24	-0.14	
8714.00	90.2700	182.2100	-1364.36	-384.08	7579.17	1366.89	1819.94	85.00	1.81	0.61	1.71	
8884.00	89.8700	180.5400	-1534.30	-388.16	7578.96	1536.86	1989.93	170.00	1.01	-0.24	-0.98	
9055.00	89.1300	178.8200	-1705.28	-387.21	7580.45	1707.83	2160.92	171.00	1.09	-0.43	-1.01	
9140.00	89.0300	179.0400	-1790.26	-385.62	7581.82	1792.80	2245.90	85.00	0.28	-0.12	0.26	
9225.00	88.9500	179.3900	-1875.24	-384.46	7583.32	1877.76	2330.89	85.00	0.42	-0.09	0.41	
9310.00	88.2100	178.1400	-1960.19	-382.62	7585.42	1962.70	2415.86	85.00	1.71	-0.87	-1.47	
9396.00	91.2600	179.3900	-2046.16	-380.77	7585.82	2048.66	2501.85	86.00	3.83	3.55	1.45	
Tie	MD	Incl	Azim	North	East	TVD	VS	Incr VS	Crs Len	DLS	Build	Turn
	ft	deg	deg	ft	ft	ft	ft	ft	ft	deg/100ft	deg/100ft	deg/100ft
9481.00	90.9800	180.2000	-2131.14	-380.47	7584.16	2133.63	2586.83	85.00	1.01	-0.33	0.95	
9566.00	90.7100	183.6400	-2216.07	-383.31	7582.90	2218.58	2671.81	85.00	4.06	-0.32	4.05	
9651.00	88.6700	185.0000	-2300.82	-389.72	7583.36	2303.37	2756.80	85.00	2.88	-2.40	1.60	
9779.00	89.4700	184.7400	-2428.34	-400.58	7585.44	2430.96	2884.79	128.00	0.66	0.63	-0.20	
9822.00	89.7200	184.7200	-2471.19	-404.13	7585.75	2473.84	2927.78	43.00	0.58	0.58	-0.05	
9907.00	89.1300	184.1200	-2555.93	-410.68	7586.60	2558.62	3012.78	85.00	0.99	-0.69	-0.71	
9992.00	88.2700	182.7400	-2640.76	-415.76	7588.53	2643.48	3097.75	85.00	1.91	-1.01	-1.62	
10078.00	89.5000	183.0100	-2726.63	-420.07	7590.20	2729.38	3183.74	86.00	1.46	1.43	0.31	
10163.00	90.4600	182.9000	-2811.52	-424.46	7590.23	2814.29	3268.74	85.00	1.14	1.13	-0.13	
10248.00	92.6100	183.2900	-2896.36	-429.04	7587.95	2899.16	3353.70	85.00	2.57	2.53	0.46	
10333.00	91.9000	183.1200	-2981.16	-433.79	7584.61	2983.99	3438.63	85.00	0.86	-0.84	-0.20	
10418.00	91.3200	183.7300	-3065.97	-438.87	7582.22	3068.84	3523.60	85.00	0.99	-0.68	0.72	
10504.00	89.5300	183.2400	-3151.81	-444.10	7581.58	3154.70	3609.59	86.00	2.16	-2.08	-0.57	
10589.00	89.4400	181.6900	-3236.72	-447.75	7582.35	3239.64	3694.59	85.00	1.83	-0.11	-1.82	
10674.00	88.7400	182.1200	-3321.66	-450.58	7583.70	3324.60	3779.58	85.00	0.97	-0.82	0.51	
10759.00	88.8200	180.4200	-3406.62	-452.46	7585.51	3409.57	3864.55	85.00	2.00	0.09	-2.00	
10844.00	90.9500	180.4700	-3491.61	-453.12	7585.68	3494.56	3949.55	85.00	2.51	2.51	0.06	
10930.00	90.8500	180.9700	-3577.59	-454.20	7584.33	3580.55	4035.54	86.00	0.59	-0.12	0.58	
11015.00	90.2100	181.1800	-3662.58	-455.79	7583.54	3665.54	4120.53	85.00	0.79	-0.75	0.25	
11100.00	91.2600	181.2100	-3747.55	-457.57	7582.45	3750.52	4205.52	85.00	1.24	1.24	0.04	
11271.00	89.2900	180.9100	-3918.51	-460.73	7581.63	3921.50	4376.51	171.00	1.17	-1.15	-0.18	
11357.00	90.2700	180.2200	-4004.50	-461.58	7581.96	4007.50	4462.51	86.00	1.39	1.14	-0.80	
11442.00	88.3000	181.1700	-4089.48	-462.61	7583.02	4092.49	4547.50	85.00	2.57	-2.32	1.12	
11484.00	87.2700	180.4200	-4131.45	-463.19	7584.64	4134.45	4589.47	42.00	3.03	-2.45	-1.79	
11527.00	87.5900	180.9900	-4174.40	-463.72	7586.57	4177.41	4632.42	43.00	1.52	0.74	1.33	
11612.00	88.2000	179.3100	-4259.34	-463.94	7589.69	4262.35	4717.36	85.00	2.10	0.72	-1.98	
11697.00	89.2900	178.9800	-4344.31	-462.67	7591.56	4347.30	4802.34	85.00	1.34	1.28	-0.39	
11782.00	88.5800	178.8100	-4429.28	-461.04	7593.14	4432.26	4887.33	85.00	0.86	-0.84	-0.20	
11867.00	88.5000	179.0500	-4514.24	-459.45	7595.30	4517.21	4972.30	85.00	0.30	-0.09	0.28	
11952.00	89.3500	179.2400	-4599.21	-458.18	7596.90	4602.17	5057.28	85.00	1.02	1.00	0.22	
12038.00	89.8400	180.9500	-4685.20	-458.32	7597.50	4688.16	5143.28	86.00	2.07	0.57	1.99	
12123.00	92.2100	181.5300	-4770.16	-460.16	7595.98	4773.13	5228.26	85.00	2.87	2.79	0.68	
12208.00	91.3600	182.7500	-4855.06	-463.33	7593.34	4858.05	5313.21	85.00	1.75	-1.00	1.44	
12293.00	91.3500	182.9900	-4939.93	-467.59	7591.33	4942.95	5398.19	85.00	0.28	-0.01	0.28	
12378.00	90.2100	182.0900	-5024.84	-471.36	7590.17	5027.88	5483.18	85.00	1.71	-1.34	-1.06	
12511.00	90.0600	181.1900	-5157.78	-475.16	7589.85	5160.84	5616.18	133.00	0.69	-0.11	-0.68	
Projection to TD:												
12568.00	90.0600	181.1900	-5214.77	-476.35	7589.80	5217.84	5673.18	57.00	0.00	0.00	0.00	

