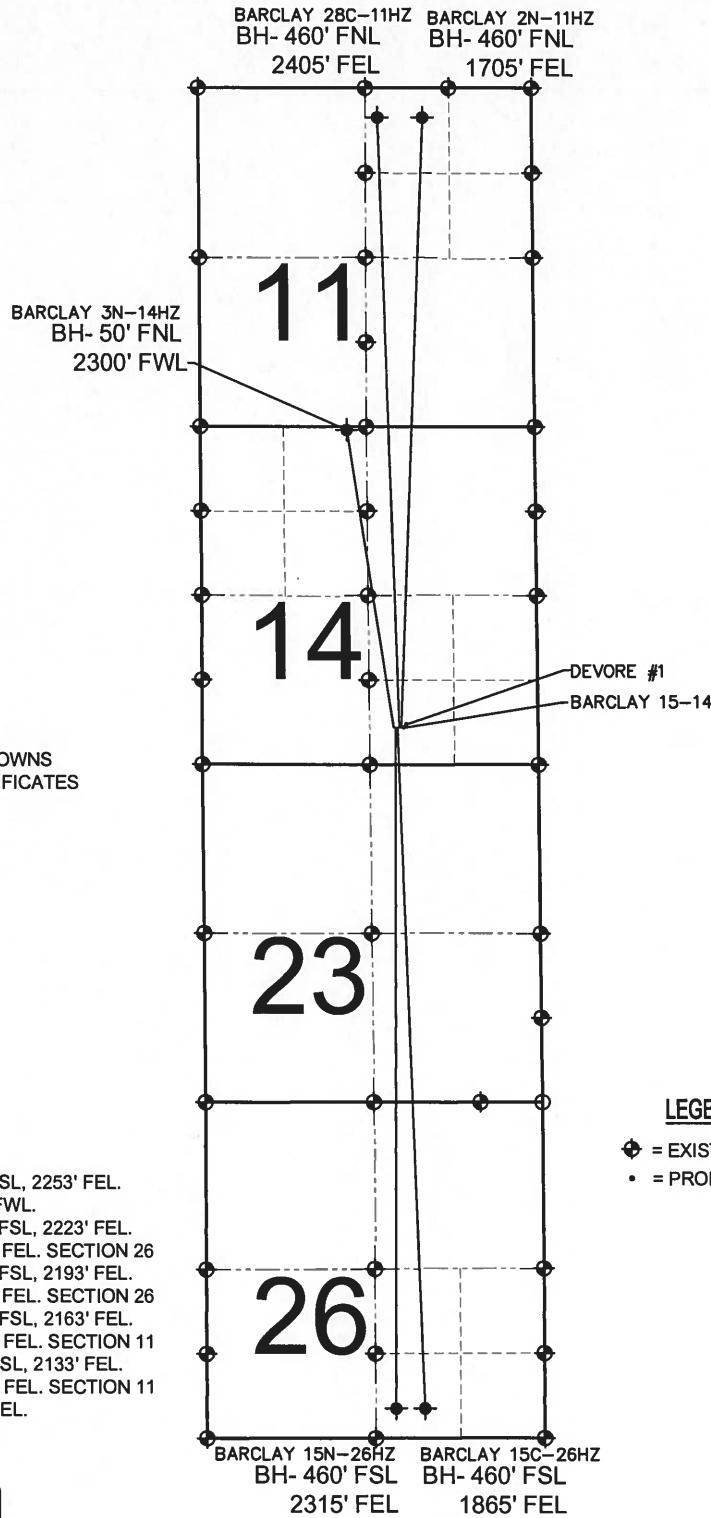


BARCLAY 2N-11HZ MULTI-WELL PLAN

SECTION 14, TOWNSHIP 2 NORTH, RANGE 67 WEST, 6TH P.M.



NOTE:
FOR DETAILED SECTION BREAKDOWNS
REFER TO WELL LOCATION CERTIFICATES
PER SECTION

NOTES:
BARCLAY 3N-14HZ TO BE AT 577' FSL, 2253' FEL.
BOTTOM HOLE AT 50' FNL & 2300' FWL.
BARCLAY 15N-26HZ TO BE AT 577' FSL, 2223' FEL.
BOTTOM HOLE AT 460' FSL & 2315' FEL. SECTION 26
BARCLAY 15C-26HZ TO BE AT 577' FSL, 2193' FEL.
BOTTOM HOLE AT 460' FSL & 1865' FEL. SECTION 26
BARCLAY 28C-11HZ TO BE AT 577' FSL, 2163' FEL.
BOTTOM HOLE AT 460' FNL & 2405' FEL. SECTION 11
BARCLAY 2N-11HZ TO BE AT 577' FSL, 2133' FEL.
BOTTOM HOLE AT 460' FNL & 1705' FEL. SECTION 11
BARCLAY 15-14 IS 577' FSL, 2084' FEL.
DEVORE #1 IS 661' FSL, 1966' FEL.

LEGEND

- ◆ = EXISTING MONUMENT
- ◆ = EXISTING WELL
- = PROPOSED WELL
- BH= BOTTOM HOLE

PREPARED BY:

PFS



Petroleum Field Services, LLC
1801 W. 13th Ave.
Denver, CO 80204

KERR-MCGEE OIL & GAS ONSHORE LP

FIELD DATE:
09-23-13

DRAWING DATE:
09-24-13

SURFACE LOCATION:

SW 1/4 SE 1/4, SEC. 14, T2N, R67W, 6TH P.M.
WELD COUNTY, COLORADO

