



CEMENT BOND LOG
VDL & CCL
GAMMA-RAY

Pioneer Energy Services

Company BILL BARRETT CORP.

Well INDIAN TREE 1

Field EATON

County WELD State COLORADO

Location: API #: 05123127060000

Permanent Datum GL Elevation 4861

Log Measured From KB

Drilling Measured From KB

Other Services NONE

Elevation K.B. 4873
D.F. 4872
G.L. 4861

Date JANUARY 14, 2014

Run Number ONE

Depth Driller 7449

Depth Logger 2000

Bottom Logged Interval 1999

Top Log Interval SURFACE

Open Hole Size 7-7/8"

Type Fluid WATER

Density / Viscosity 8.33 / 32

Max. Recorded Temp. NA

Estimated Cement Top SEE LOG

Time Well Ready ROA

Time Logger on Bottom 1530

Equipment Number 24

Location FT. MORGAN

Recorded By LEROY HOBBS

Witnessed By BOB O'DONOVAN

Borehole Record				Tubing Record			
Run Number	Bit	From	To	Size	Weight	From	To
Casing Record							
Surface String		Size		Wgt/Ft		Top	Bottom
		9.625"		24#		SURFACE	NA
Prot. String							
Production String		4.5"		11.6#		SURFACE	7443
Liner							

<<< Fold Here >>>

All interpretations are opinions based on inferences from electrical or other measurements and we cannot and do not guarantee the accuracy or correctness of any interpretation, and we shall not, except in the case of gross or willful negligence on our part, be liable or responsible for any loss, costs, damages, or expenses incurred or sustained by anyone resulting from any interpretation made by any of our officers, agents or employees. These interpretations are also subject to our general terms and conditions set out in our current Price Schedule.

Comments

S.O. 2-206039

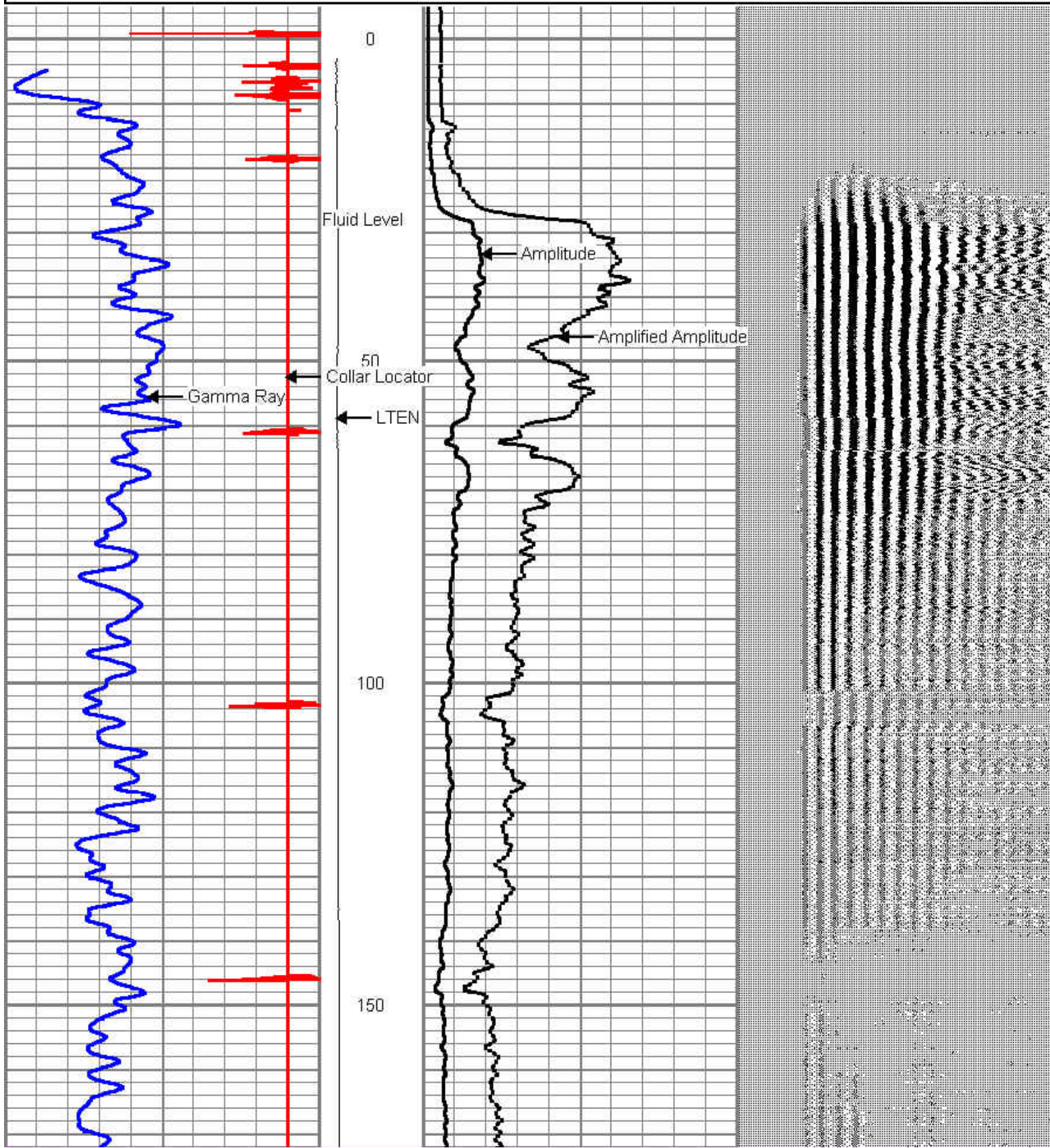
THANK YOU FOR USING PIONEER ENERGY SERVICES!

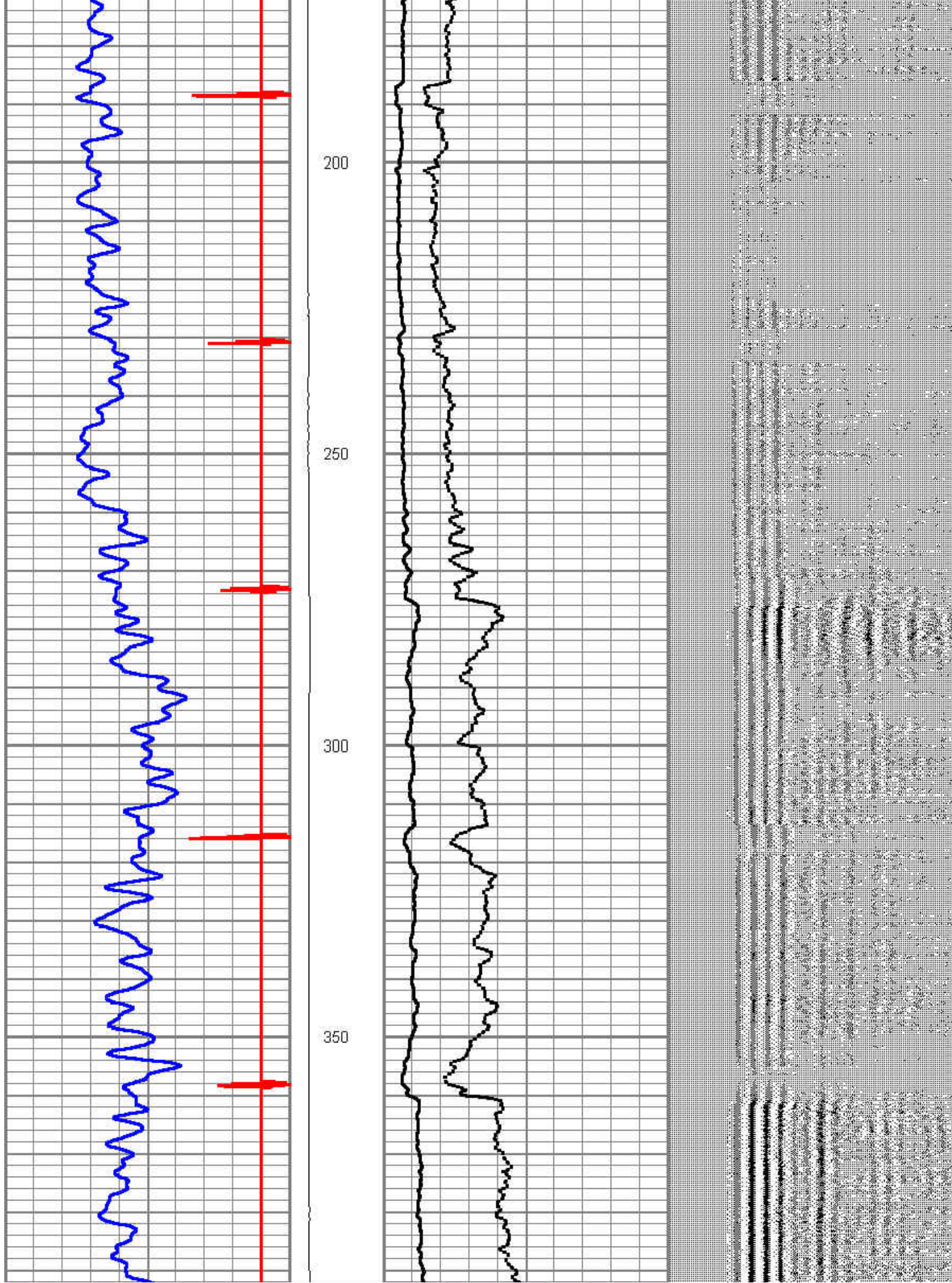
Sensor	Offset (ft)	Schematic	Description	Len (ft)	OD (in)	Wt (lb)
			STNDRD Standard Cable Head	1.00	1.89	1.00

			SDSCENT Centralizer	2.88	2.75	20.00
WVF3	12.48					
WVF5	11.48		CBL-Probe (050215) 2.75 digital probe	8.75	2.75	106.50
			SDSCENT Centralizer	2.88	2.75	20.00
CCL	4.13		CCL-Probe (081119)	2.02	2.75	
GR	0.79		GR-probe 2.75 (51013)	3.33	2.75	40.00
<div> <div> Dataset: Total Length: Total Weight: O.D. </div> <div> indiantree1rmdtn.db: field/well/cbl/pass4 20.85 ft 187.50 lb 2.75 in </div> </div>						

Database File: indiantree1rmdtn.db
 Dataset Pathname: cbl/pass4
 Presentation Format: cbl_dr
 Dataset Creation: Tue Jan 14 15:34:54 2014 by Log SCH 120430
 Charted by: Depth in Feet scaled 1:240

18	Collar Locator	-2	LTEN	0	Amplified Amplitude (mV)	30	200	Variable Density	1200
0	Gamma Ray (GAPI)	200	0	(lb)1000	0	Amplitude (mV)	100		







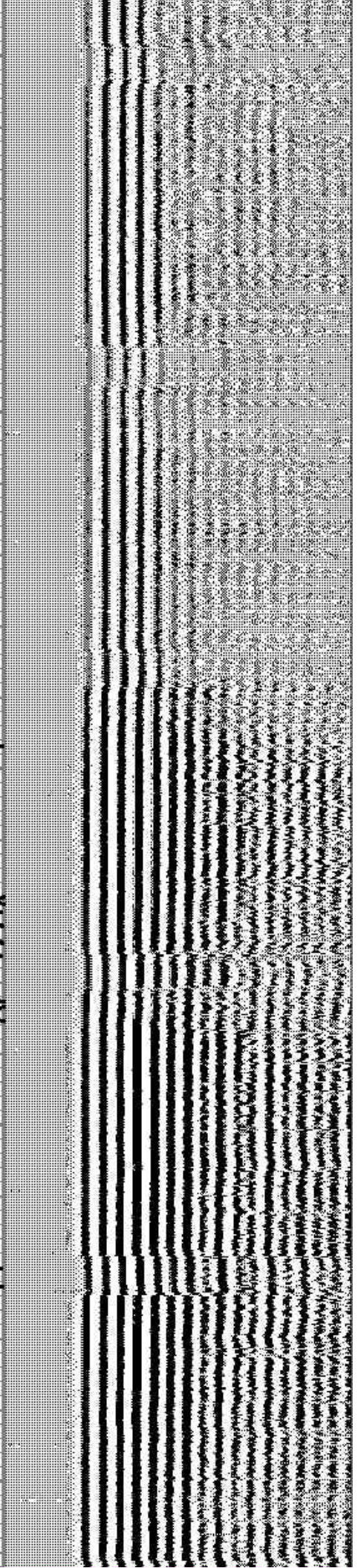
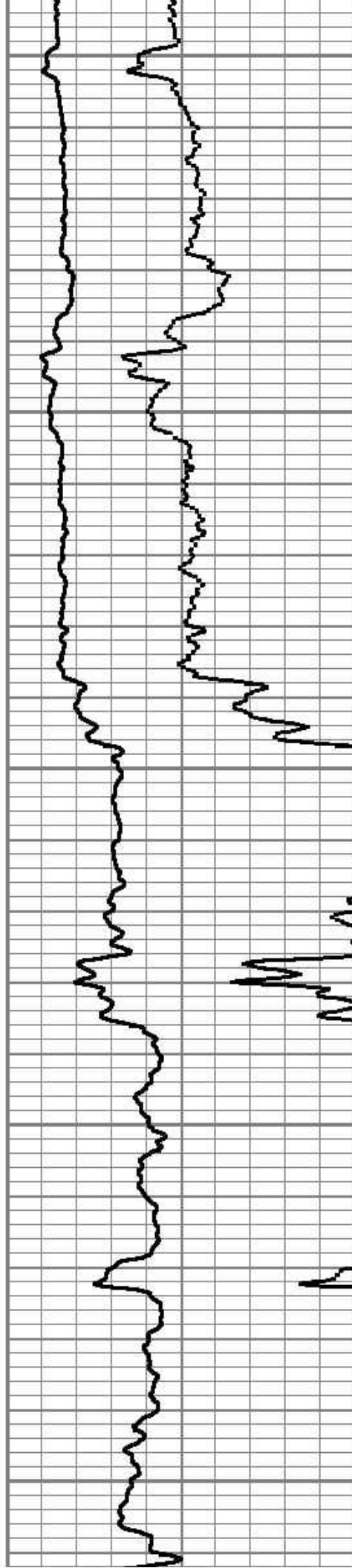
400

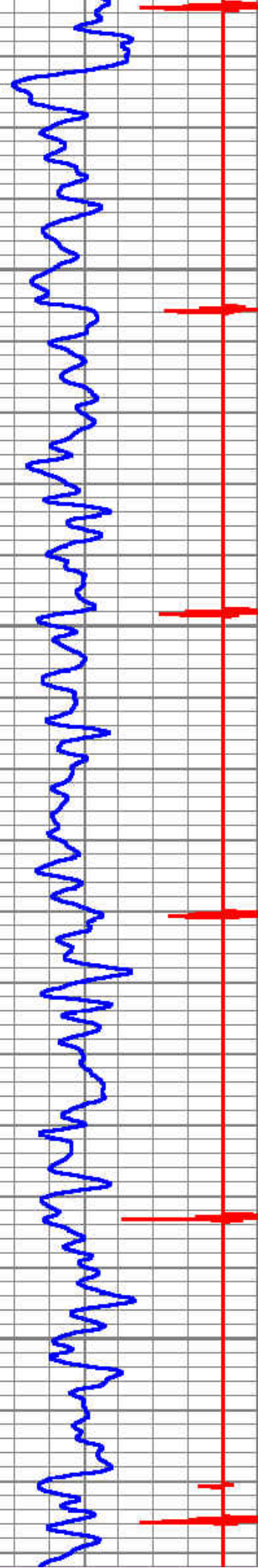
450

500

550

600



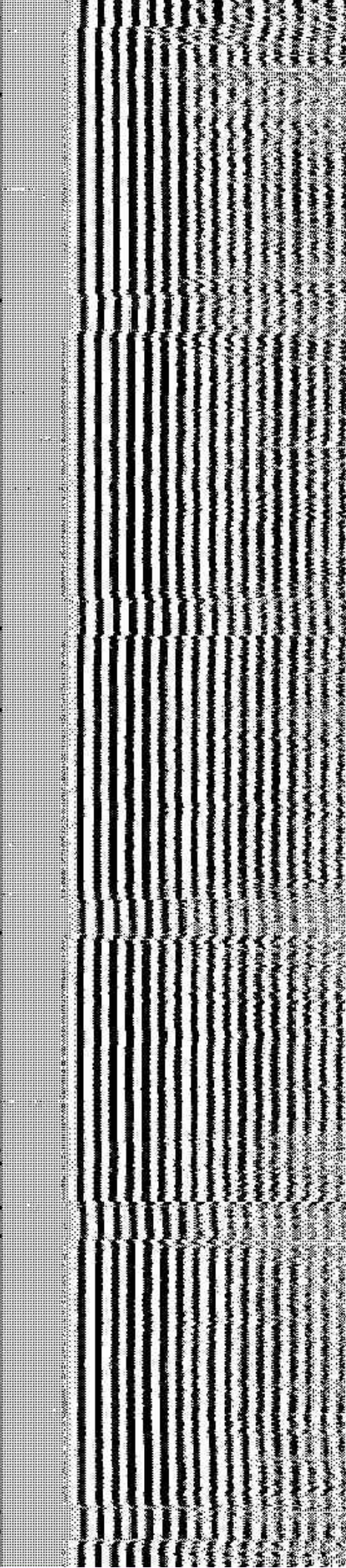
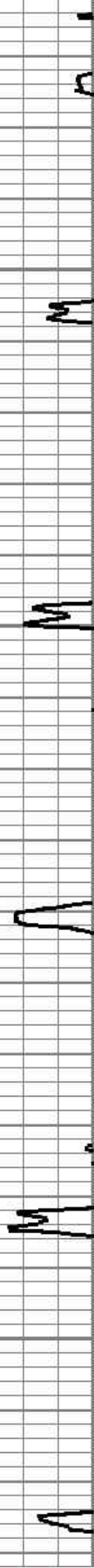
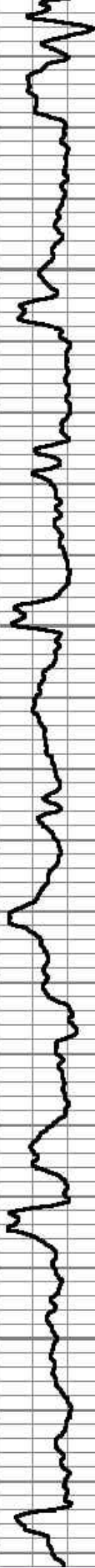


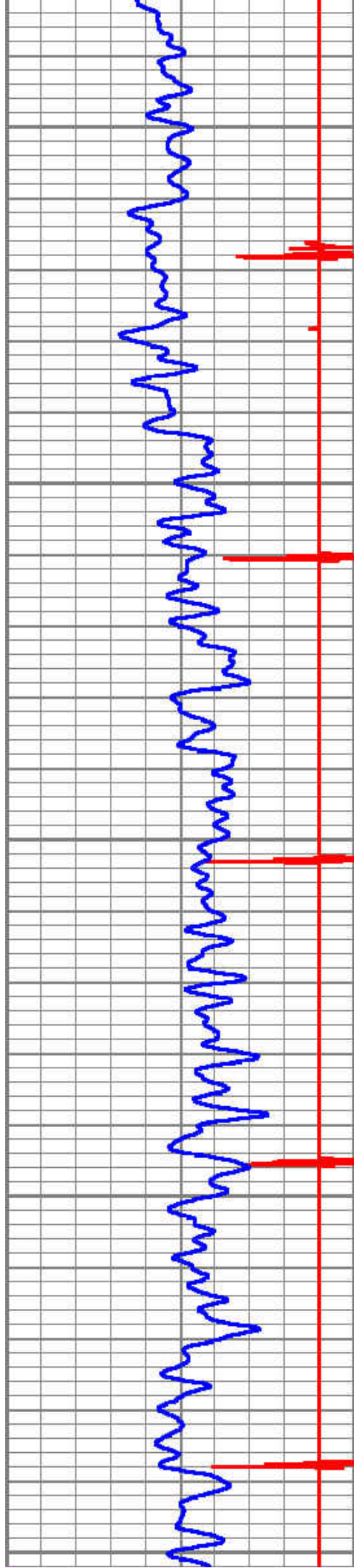
650

700

750

800





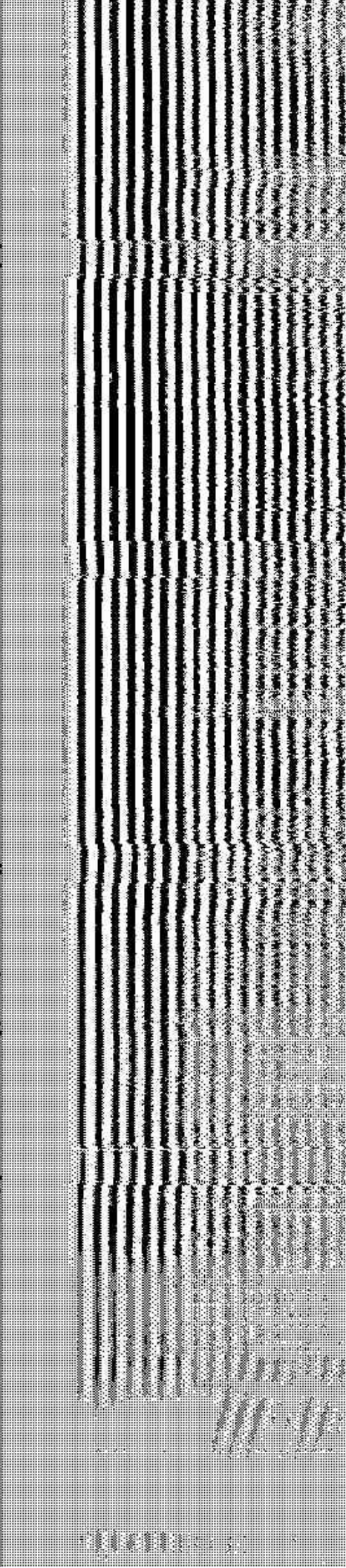
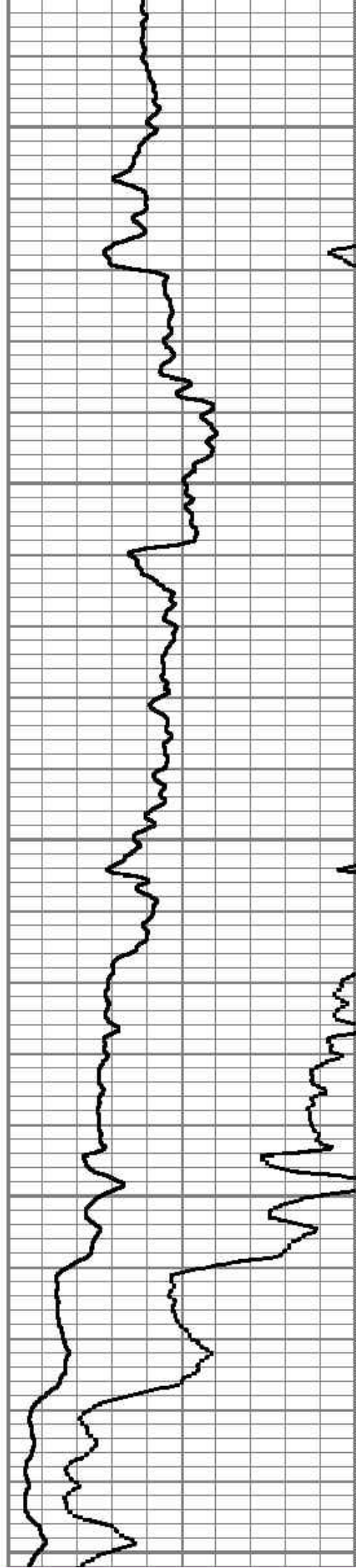
850

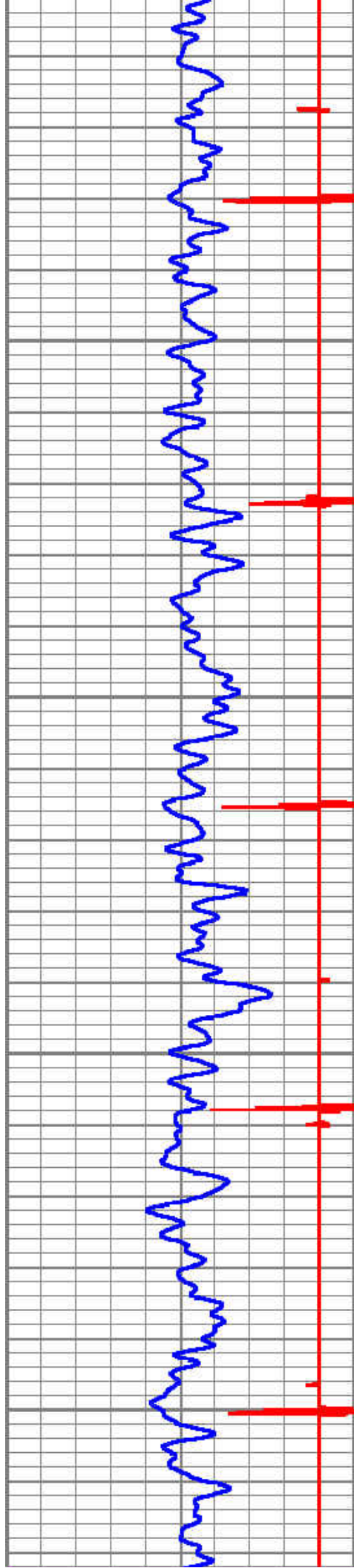
900

950

1000

1050



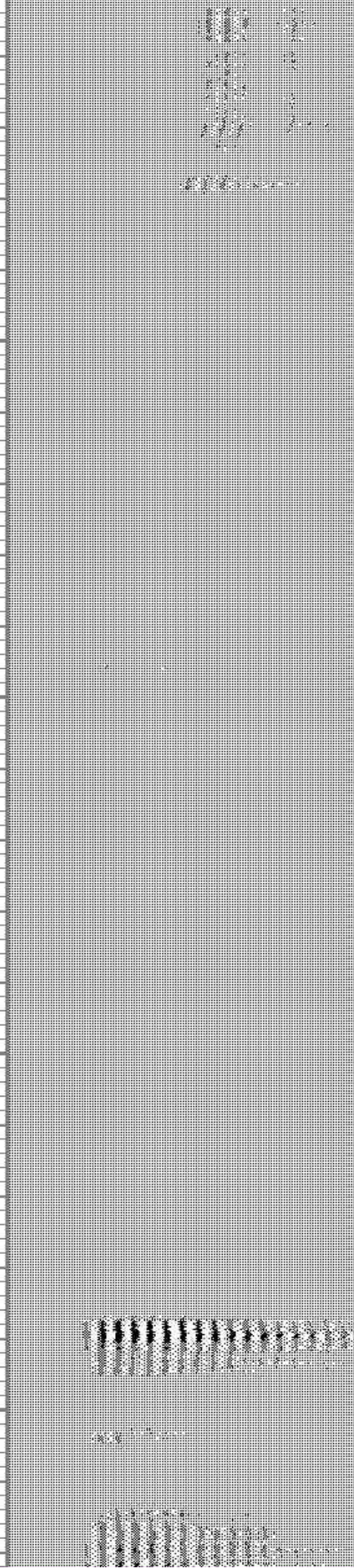
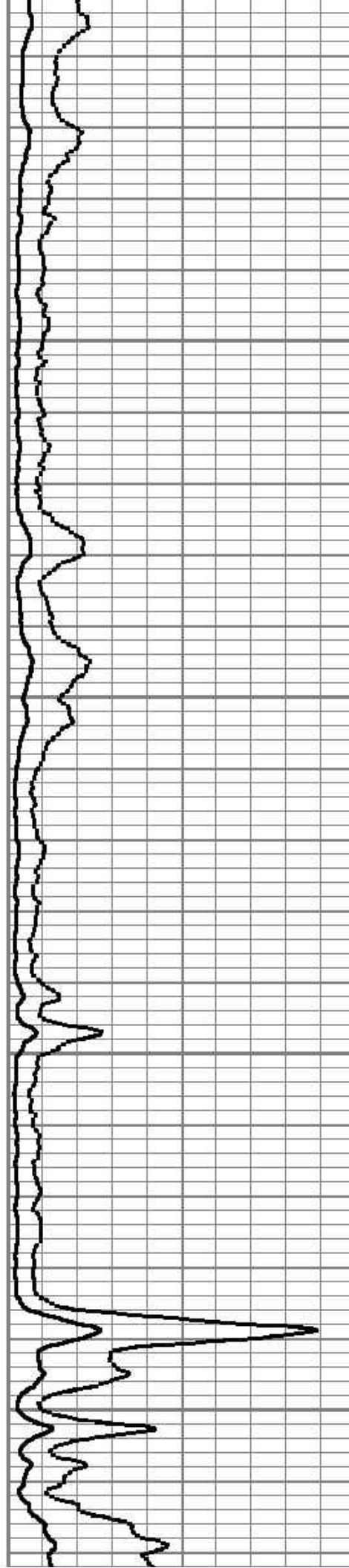


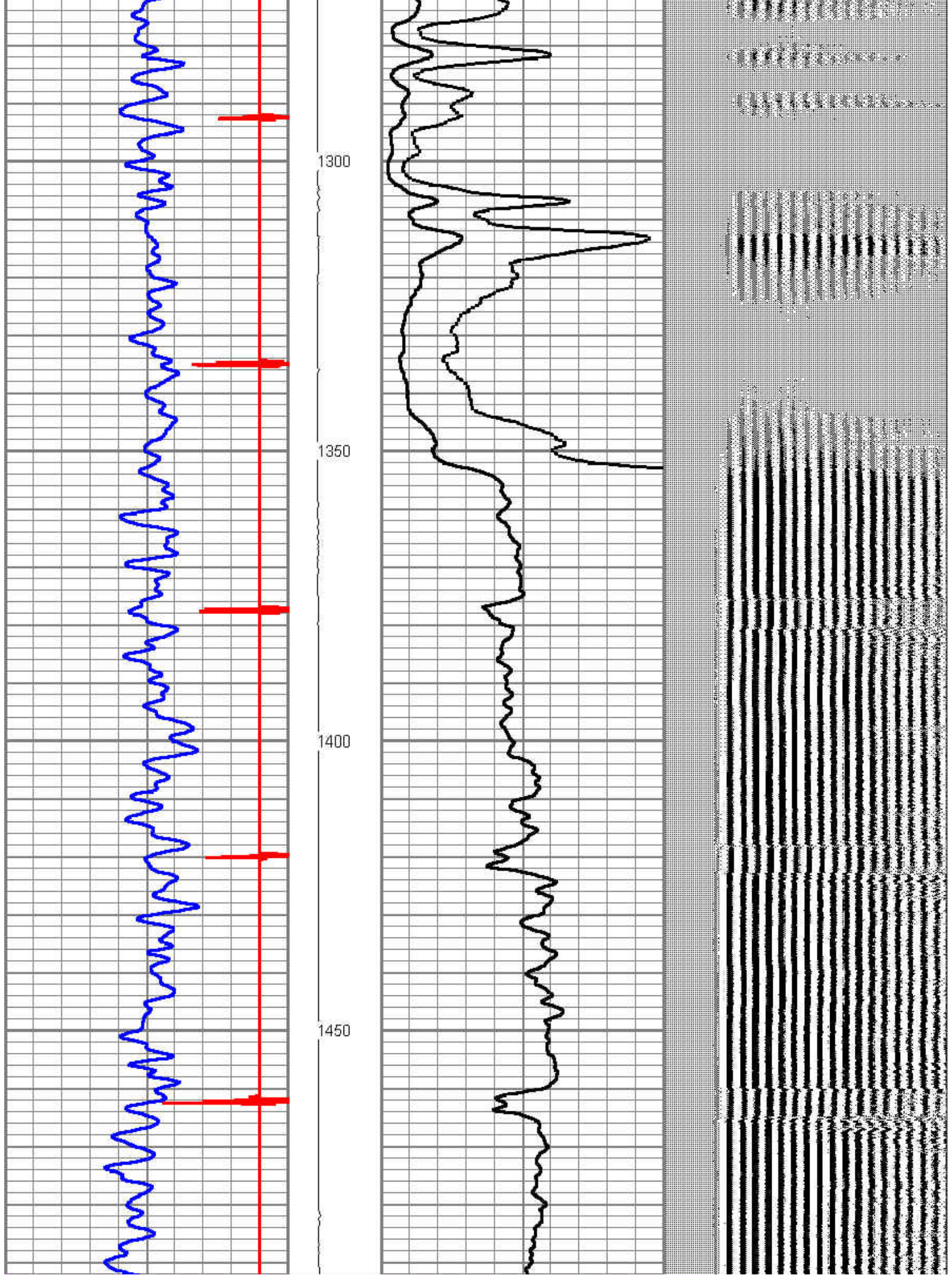
1100

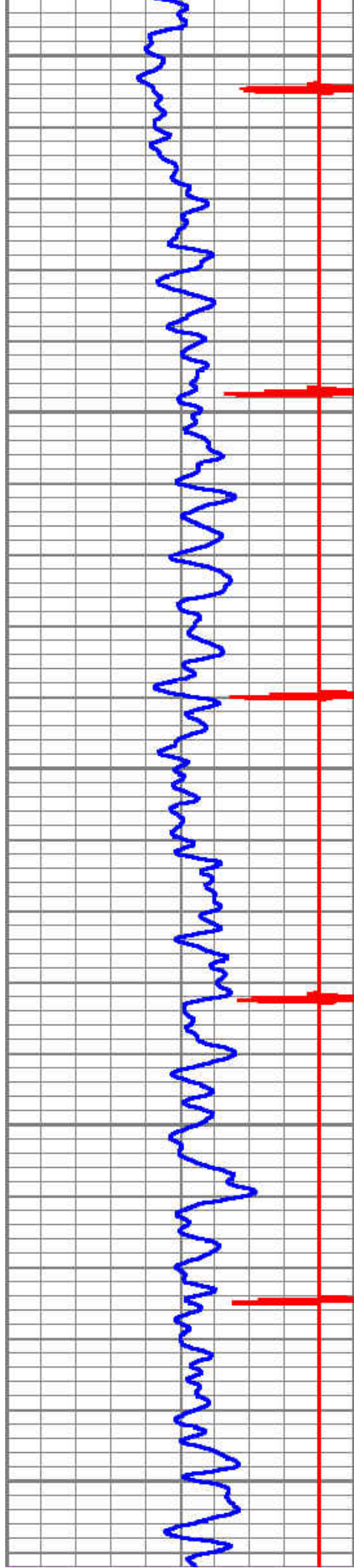
1150

1200

1250







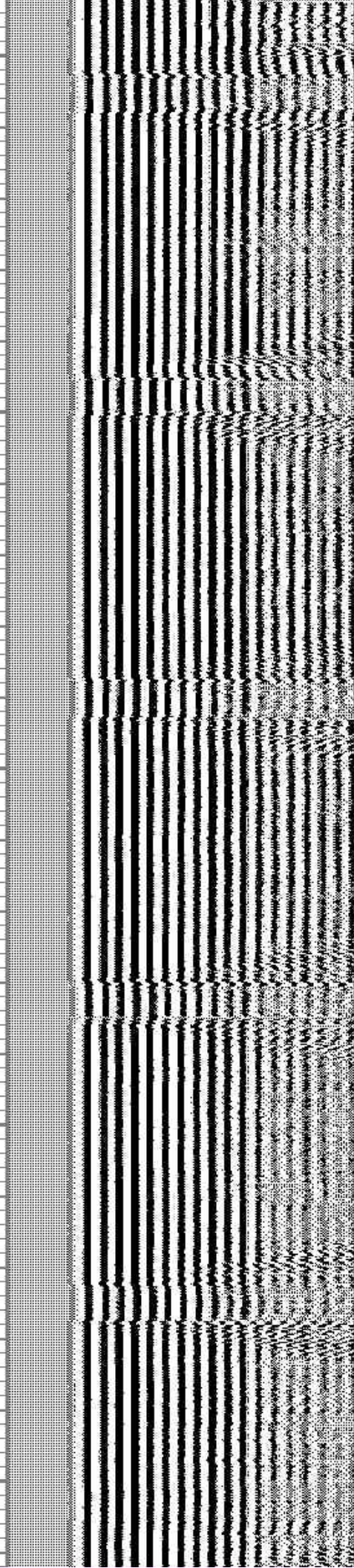
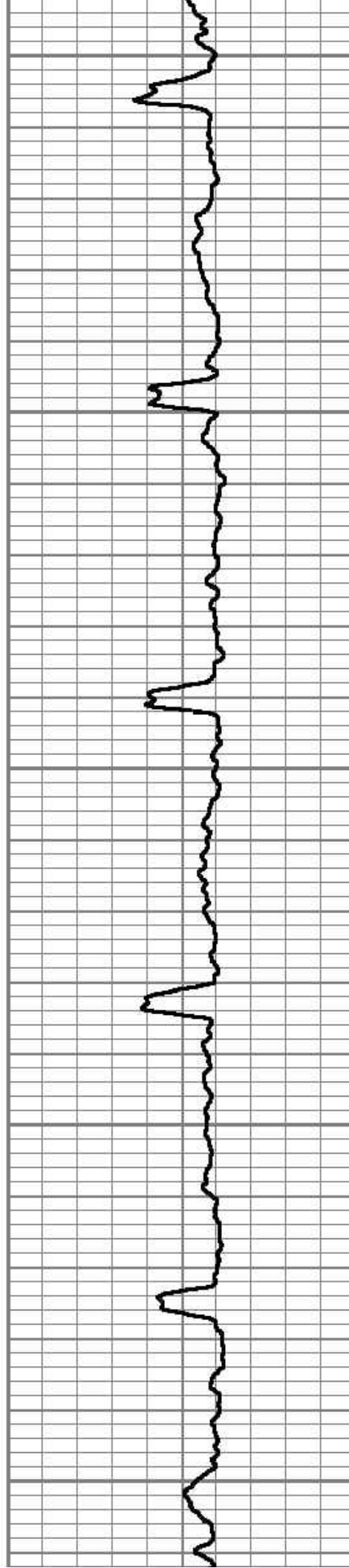
1500

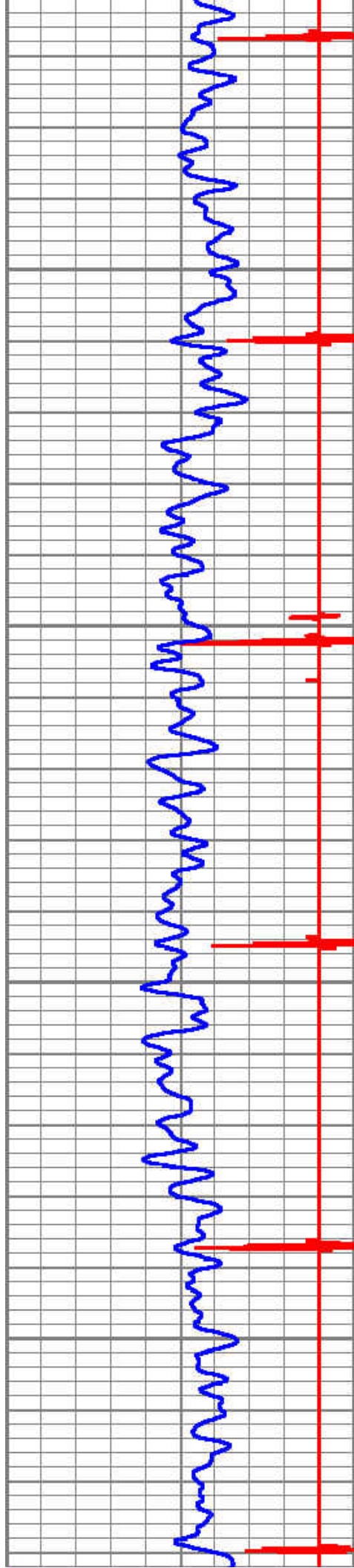
1550

1600

1650

1700



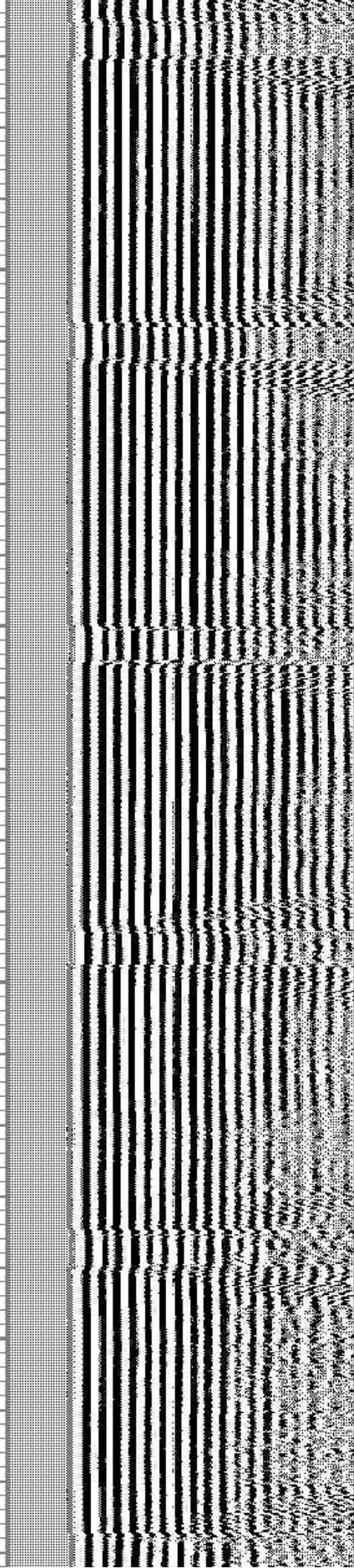
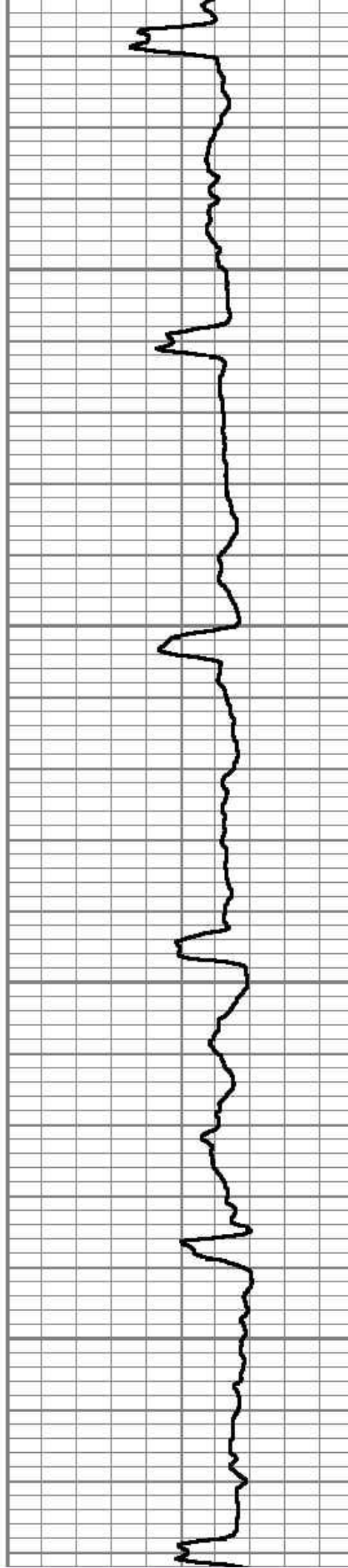


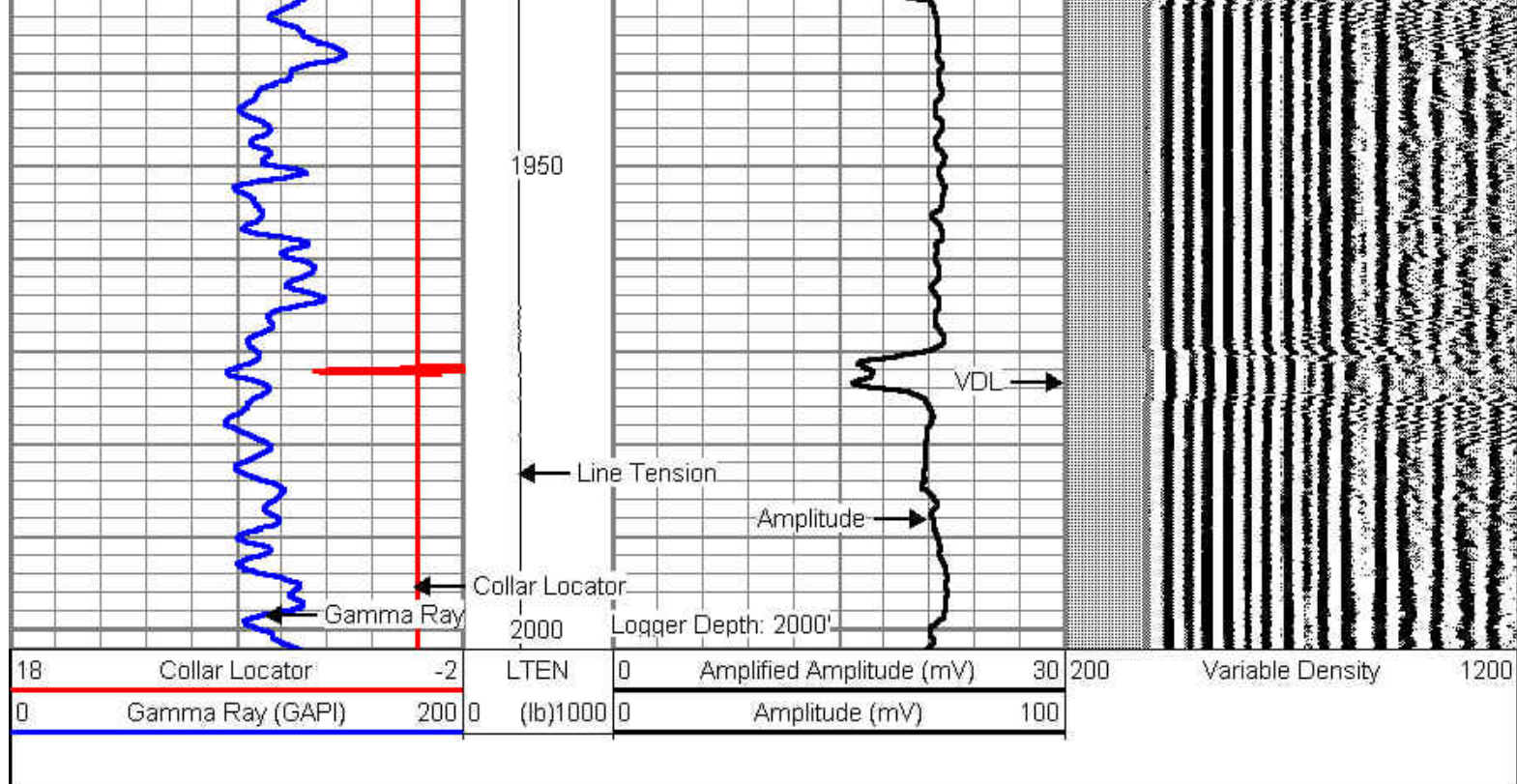
1750

1800

1850

1900





Calibration Report

Database File: indiantree1rmdtn.db
 Dataset Pathname: cbl/pass2
 Dataset Creation: Tue Jan 14 15:17:04 2014 by Log SCH 120430

Gamma Ray Calibration Report

Serial Number: 51013
 Tool Model: probe 2.75
 Performed: Sat Jan 11 12:27:27 2014

Calibrator Value: 1400.0 GAPI

Background Reading: 26.8 cps
 Calibrator Reading: 1120.0 cps

Sensitivity: 1.1500 GAPI/cps

Cement Bond Log Calibration Report

Serial Number: 050215
 Tool Model: Probe
 Performed: Sat Jan 11 13:54:46 2014

Depth: 195.733 ft
 Casing Diameter: 7 in

3' Spacing 5' Spacing

Signal Zero: 1.5 1.5 mV
 Calibrated Amplitude: 62.1651 62.1651 mV
 Reading at Signal Zero: -0.00549316 -0.00576172 V
 Reading in Free Pipe: 2.08789 1.88074 V

Gain: 28.9794 32.1575
 Offset: 1.65919 1.68528



Company BILL BARRETT CORP.

PIONEER

Pioneer Energy Services

Well	INDIAN TREE 1
Field	EATON
County	WELD
State	COLORADO