

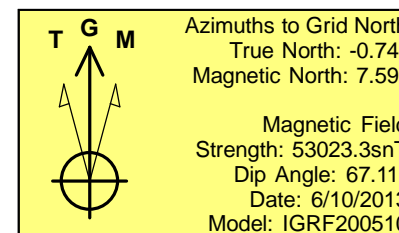
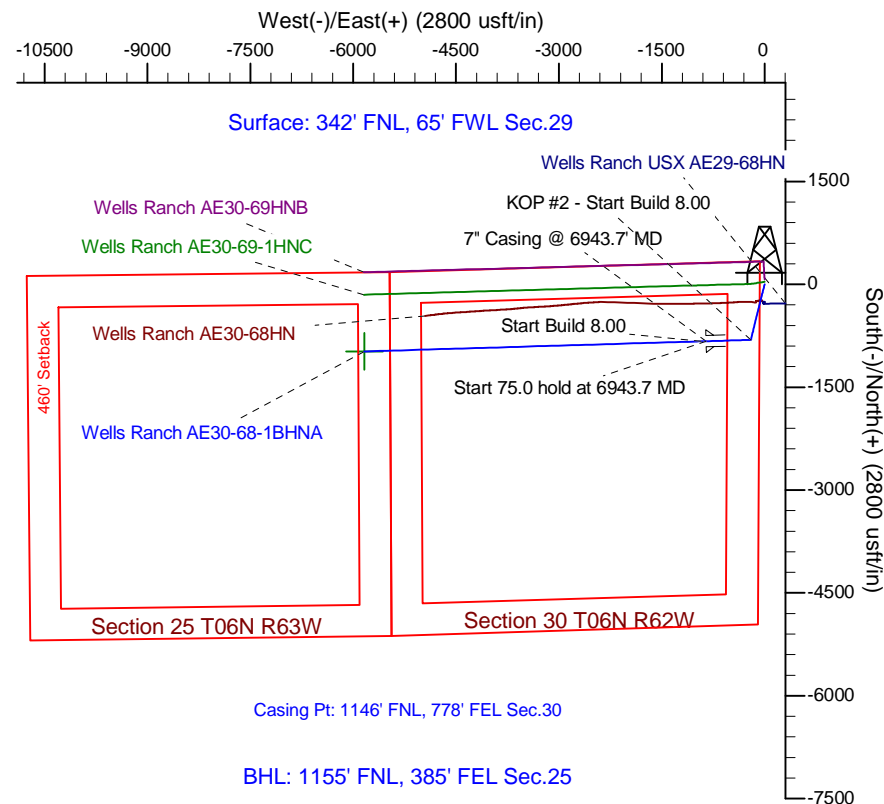
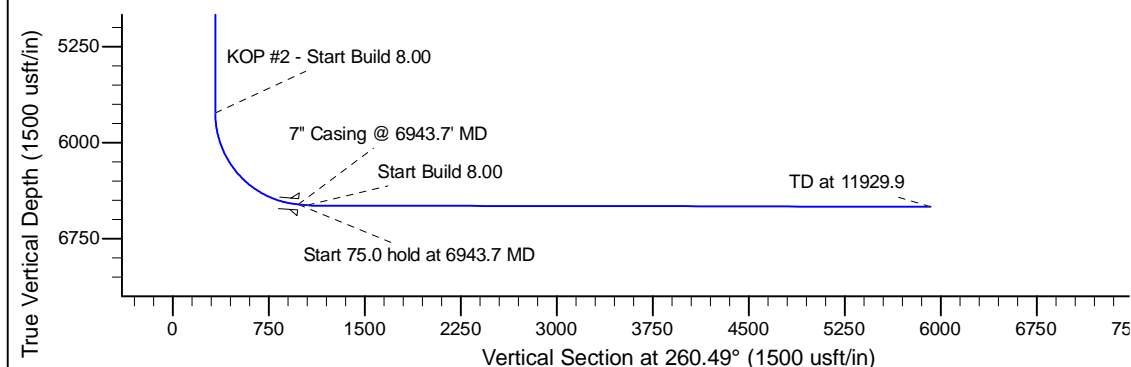
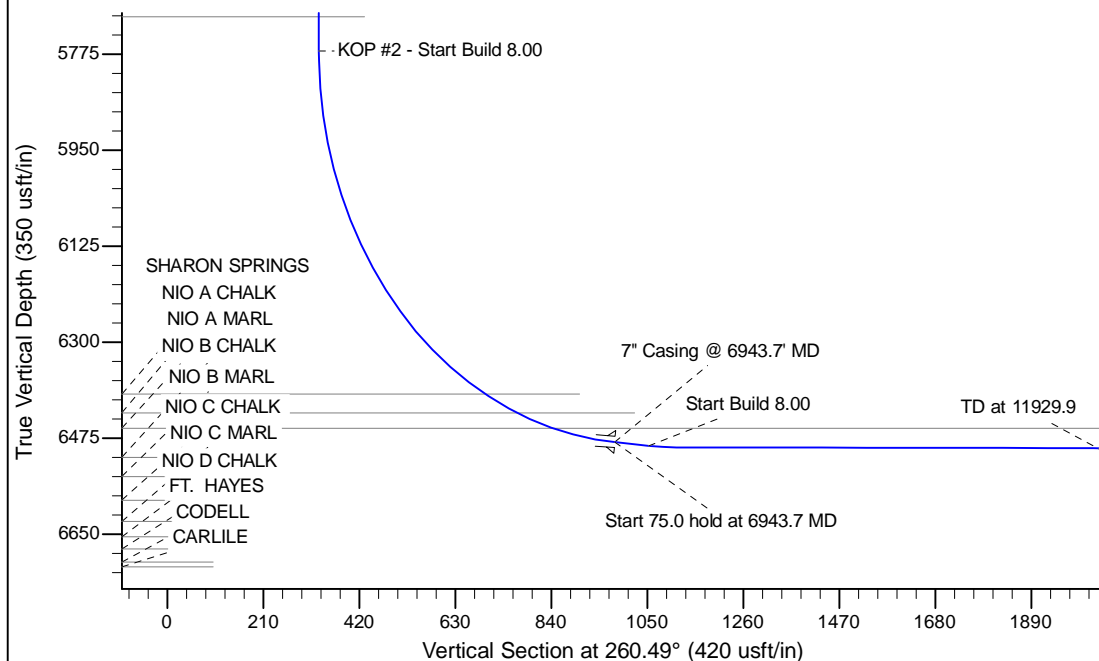
Project: Wattenberg Field
 Site: AE (Sec.29-T06N-R62W) Weld County, CO
 Well: Wells Ranch AE30-68-1BHNA
 Wellbore: Original Drilling
 Design: APD - Rev 1

Northern Region Drilling - Working

Geodetic System: US State Plane 1983
 Datum: North American Datum 1983
 Ellipsoid: GRS 1980
 Zone: Colorado Northern Zone
 System Datum: Mean Sea Level

SECTION DETAILS

Sec	MD	Inc	Azi	TVD	+N/-S	+E/-W	Dleg	TFace	VFace	Target
1	0.0	0.00	0.00	0.0	0.0	0.0	0.00	0.00	0.0	
2	1200.0	0.00	0.00	1200.0	0.0	0.0	0.00	0.00	0.0	
3	2050.1	17.00	193.87	2037.7	-121.6	-30.0	2.00	193.87	49.7	
4	4047.0	17.00	193.87	3947.3	-688.4	-170.0	0.00	0.00	281.4	
5	4897.1	0.00	0.00	4785.0	-810.0	-200.0	2.00	180.00	331.1	
6	5881.2	0.00	0.00	5769.1	-810.0	-200.0	0.00	0.00	331.1	
7	6943.7	85.00	268.29	6482.6	-829.5	-853.5	8.00	268.29	978.8	
8	7018.7	85.00	268.29	6489.1	-831.7	-928.2	0.00	0.00	1052.9	
9	7080.0	89.90	268.29	6491.8	-833.6	-989.3	8.00	0.00	1113.5	
10	11929.9	89.90	268.29	6500.3	-978.2	-5837.1	0.00	0.00	5918.4	Wells Ranch AE30-68-1BHNA BHL 1155'FNL, 385'FEL



WELL DETAILS: Wells Ranch AE30-68-1BHNA					
Ground Level: 4775.0					
0.0	0.0	Northing	Easting	Latitude	Longitude
		1413936.23	3318314.48	40.464020	-104.355970
Plan: APD - Rev 1 (Wells Ranch AE30-68-1BHNA/Original Drilling)					
Created By: Shailey Jewell			Date: 15:03, January 08 2014		
Checked: _____			Date: _____		
Reviewed: _____			Date: _____		
Approved: _____			Date: _____		