

*The Road to Excellence Starts with Safety*

Sold To #: 300721	Ship To #: 3105323	Quote #:	Sales Order #: 900742331
Customer: WPX ENERGY ROCKY MOUNTAIN LLC-EBUS	Customer Rep: Duniho, Al		
Well Name: RWF	Well #: 411-35	API/UWI #:	
Field: GARND VAILLEY	City (SAP): RIFLE	County/Parish: Garfield	State: Colorado
Contractor: CYCLONE 17	Rig/Platform Name/Num: 17		
Job Purpose: Cement Surface Casing			
Well Type: Development Well	Job Type: Cement Surface Casing		
Sales Person: MAYO, MARK	Srv Supervisor: KEANE, JOHN	MBU ID Emp #: 486519	

### Job Personnel

HES Emp Name	Exp Hrs	Emp #	HES Emp Name	Exp Hrs	Emp #	HES Emp Name	Exp Hrs	Emp #
BANKS, BRENT A	0.0	371353	JENSEN, SHANE	0.0	441759	KEANE, JOHN Donovon	0.0	486519
WARDELL, STEVEN	0.0	549567						

### Equipment

HES Unit #	Distance-1 way	HES Unit #	Distance-1 way	HES Unit #	Distance-1 way	HES Unit #	Distance-1 way
10567589C	60 mile	10867531	60 mile	10989685	60 mile	11259881	60 mile
11808829	60 mile						

### Job Hours

Date	On Location Hours	Operating Hours	Date	On Location Hours	Operating Hours	Date	On Location Hours	Operating Hours
TOTAL								

Total is the sum of each column separately

### Job

Formation Name	Formation Depth (MD)	Top	Bottom	Form Type	Job depth MD	Job Depth TVD	Water Depth	Perforation Depth (MD)	From	To
				BHST	1123.7 ft	1123.7 ft				
							Wk Ht Above Floor			
							4. ft			

### Job Times

Date	Time	Time Zone
16 - Sep - 2013	09:30	MST
16 - Sep - 2013	17:06	MST
16 - Sep - 2013	19:50	MST
16 - Sep - 2013	20:44	MST
16 - Sep - 2013	22:45	MST

### Well Data

Description	New / Used	Max pressure psig	Size in	ID in	Weight lbm/ft	Thread	Grade	Top MD ft	Bottom MD ft	Top TVD ft	Bottom TVD ft
-------------	------------	-------------------	---------	-------	---------------	--------	-------	-----------	--------------	------------	---------------

### Tools and Accessories

Type	Size	Qty	Make	Depth	Type	Size	Qty	Make	Depth	Type	Size	Qty	Make
Guide Shoe					Packer					Top Plug			
Float Shoe					Bridge Plug					Bottom Plug			
Float Collar					Retainer					SSR plug set			
Insert Float										Plug Container			
Stage Tool										Centralizers			

### Miscellaneous Materials

Gelling Agt	Conc	Surfactant	Conc	Acid Type	Qty	Conc	%
Treatment Fld	Conc	Inhibitor	Conc	Sand Type	Size	Qty	

### Fluid Data

Stage/Plug #: 1	Fluid #	Stage Type	Fluid Name	Qty	Qty uom	Mixing Density lbm/gal	Yield ft3/sk	Mix Fluid Gal/sk	Rate bbl/min	Total Mix Fluid Gal/sk
-----------------	---------	------------	------------	-----	---------	------------------------	--------------	------------------	--------------	------------------------

Stage/Plug #: 1	Fluid #	Stage Type	Fluid Name	Qty	Qty uom	Mixing Density uom	Yield uom	Mix Fluid uom	Rate uom	Total Mix Fluid uom
-----------------	---------	------------	------------	-----	---------	--------------------	-----------	---------------	----------	---------------------

Stage/Plug #: 1									
Fluid #	Stage Type	Fluid Name	Qty	Qty uom	Mixing Density lbm/gal	Yield ft <sup>3</sup> /sk	Mix Fluid Gal/sk	Rate bbl/min	Total Mix Fluid Gal/sk
1	Fresh Water Spacer		20.00	bbl	.	.0	.0	.0	
2	VariCem GJ Lead Cement	VARICEM (TM) CEMENT (452009)	160.0	sacks	12.3	2.38	13.75		13.75
	13.75 Gal	FRESH WATER							
3	VariCem GJ1 Tail Cement	VERSACEM (TM) SYSTEM (452010)	160.0	sacks	12.8	2.11	11.75		11.75
	11.75 Gal	FRESH WATER							
4	Fresh Water Displacement		85.00	bbl	.	.0	.0	.0	
Calculated Values		Pressures		Volumes					
Displacement		Shut In: Instant		Lost Returns		Cement Slurry		Pad	
Top Of Cement		5 Min		Cement Returns		Actual Displacement		Treatment	
Frac Gradient		15 Min		Spacers		Load and Breakdown		Total Job	
Rates									
Circulating		Mixing		Displacement		Avg. Job			
Cement Left In Pipe	Amount	0 ft	Reason	Shoe Joint					
Frac Ring # 1 @	ID	Frac ring # 2 @	ID	Frac Ring # 3 @	ID	Frac Ring # 4 @	ID		
The Information Stated Herein Is Correct				Customer Representative Signature					

*The Road to Excellence Starts with Safety*

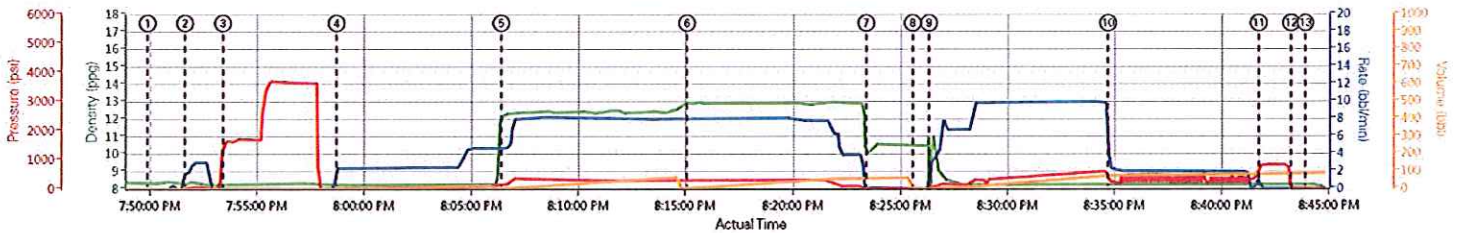
Sold To #: 300721	Ship To #: 3105323	Quote #:	Sales Order #: 900742331
Customer: WPX ENERGY ROCKY MOUNTAIN LLC-EBUS	Customer Rep: Duniho, Al		
Well Name: RWF	Well #: 411-35	API/UWI #:	
Field: GARND VAILLEY	City (SAP): RIFLE	County/Parish: Garfield	State: Colorado
Legal Description:			
Lat:	Long:		
Contractor: CYCLONE 17	Rig/Platform Name/Num: 17		
Job Purpose: Cement Surface Casing	Ticket Amount:		
Well Type: Development Well	Job Type: Cement Surface Casing		
Sales Person: MAYO, MARK	Srv Supervisor: KEANE, JOHN	MBU ID Emp #: 486519	

Activity Description	Date/Time	Cht #	Rate bbl/min	Volume bbl		Pressure psig		Comments
				Stage	Total	Tubing	Casing	
Call Out	09/16/2013 09:30							
Pre-Convoy Safety Meeting	09/16/2013 15:00							WITH HES
Arrive At Loc	09/16/2013 17:06							RIG RUNNING CASING UPON HES ARRIVAL
Assessment Of Location Safety Meeting	09/16/2013 17:15							WITH HES
Pre-Rig Up Safety Meeting	09/16/2013 18:45							WITH HES
Rig-Up Equipment	09/16/2013 18:50							
Pre-Job Safety Meeting	09/16/2013 19:30							WITH HES, WPX, AND CYCLONE 17
Start Job	09/16/2013 19:50							TP 1123.74 FT, TD 1140 FT, SHOE 45.9 FT, CSG 9.625 IN H-40 32.3 LB/FT, HOLE 13.5 IN, MWT 9.8 LB/GAL, RIG CIRCULATING AT 5 BBL/MIN, PV/YP 39/22
Pump Water	09/16/2013 19:51		2	2			77.0	FILL LINES
Test Lines	09/16/2013 19:53							LOW TEST AT 1560 PSI, HIGH TEST AT 3670 PSI, PRESSURE HOLDING
Pump Spacer	09/16/2013 19:58		4	20			101.0	FRESH WATER
Pump Lead Cement	09/16/2013 20:06		8	67.8			290.0	MIXED AT 12.3 LB/GAL, 2.38 FT3/SK, 13.75 GAL/SK, 160 SKS, DENSITY VERIFIED USING PRESSURIZED MUD SCALES

## Cementing Job Log

Activity Description	Date/Time	Cht #	Rate bbl/min	Volume bbl		Pressure psig		Comments
				Stage	Total	Tubing	Casing	
Pump Tail Cement	09/16/2013 20:15		8	60.1			290.0	MIXED AT 12.8 LB/GAL, 2.11 FT3/SK, 11.75 GAL/SK, 160 SKS, DENSITY VERIFIED USING PRESSURIZED MUD SCALES
Shutdown	09/16/2013 20:23							
Drop Plug	09/16/2013 20:25							PLUG LAUNCHED
Pump Displacement	09/16/2013 20:26		10	75			472.0	FRESH WATER
Slow Rate	09/16/2013 20:34		2	10			330.0	SLOWED AT 75 BBL AWAY
Bump Plug	09/16/2013 20:41		2				336.0	PLUG BUMPED AT CALCULATED DISPLACEMENT
Check Floats	09/16/2013 20:43						833.0	FLOATS HOLDING, 1 BBL RETURNED TO THE TRUCK
End Job	09/16/2013 20:44							GOOD CIRCULATION THROUGHOUT THE JOB, PIPE WAS THROUGHOUT THE JOB, NO ADD HOURS CHARGED, NO DERRICK CHARGE, CIRCULATED 15 BBL CEMENT BACK TO SURFACE, RIG USED 100 LBS OF SUGAR
Post-Job Safety Meeting (Pre Rig-Down)	09/16/2013 20:50							WITH HES
Rig-Down Equipment	09/16/2013 21:00							
Pre-Convoy Safety Meeting	09/16/2013 22:30							WITH HES
Crew Leave Location	09/16/2013 22:45							
Comment	09/16/2013 22:46							THANKS FOR USING HALLIBURTON, JOHN KEANE AND CREW

# WPX - RWF-411-35 - 9.625 IN SURFACE



DH Density (ppg) Comb Pump Rate (bbl/min) PS Pump Press (psi) Pump Stg Tot (bbl)

① Start Job 8:33,0;-0:38,0  
 ② Fill Lines 8:31,1;77,37,14;-0:46  
 ③ Test Lines 8:27,0;01,1893;73,1;06  
 ④ Fresh Water Spacer 8:23,2;44,68;71;-0:49  
 ⑤ Pump Lead Cement 12:24,4;64,171;21;-0:52  
 ⑥ Pump Tail Cement 12:07,8;398;21;-0:14  
 ⑦ Shutdown 10:09,0;0:59,83;35  
 ⑧ Drop Plug 10:58,0;2:45;0  
 ⑨ Pump Displacement 10:08,2;81,49;39;-0:43  
 ⑩ Slow Rate 8:28,2;35;249;21;-0:78  
 ⑪ Bump Plug 8:2,0;833;09,89;1  
 ⑫ Check Floats 8:21,0;2:45;99;1  
 ⑬ End Job 8:24,0;1:52,89;1

▼ HALLIBURTON | ICem® Service

Created: 2013-09-16 21:23:53, Version: 2.0.606

Edit

Customer: WPX ENERGY ROCKY MOUNTAIN LLC-  
EBUS

Representative: MIKE BRAUNK

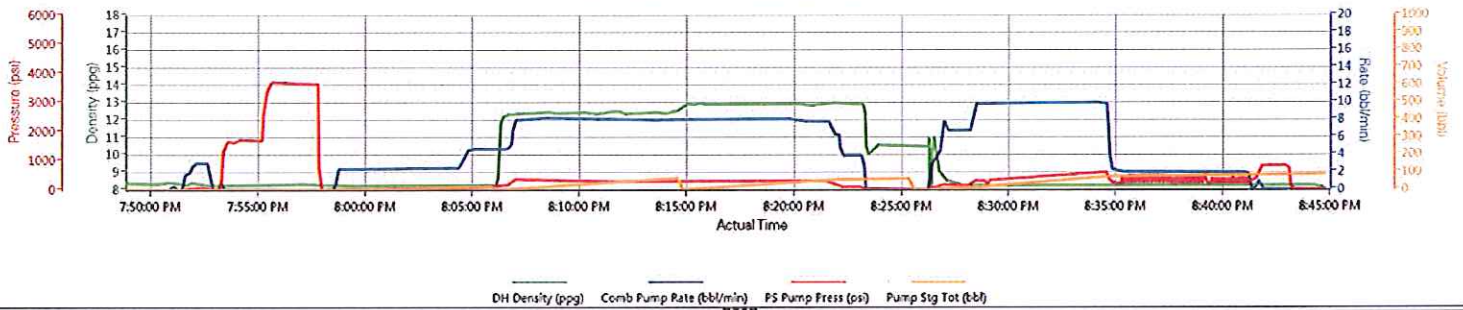
Job Date: 9/16/2013 7:18:59 PM

Sales Order #: 900742331

Well: RWF-411-35

ELITE 3: JOHN KEAHE / BREIT BAIKS

# WPX - RWF-411-35 - 9.625 IN SURFACE



▼ HALLIBURTON | ICem® Service

Created: 2013-09-16 21:23:53, Version: 2.0.606

Edit

Customer: WPX ENERGY ROCKY MOUNTAIN LLC-  
EBUS  
Representative: MIKE BRUHN

Job Date: 9/16/2013 7:18:59 PM  
Sales Order #: 900742331

Well: RWF-411-35  
ELITE 3: JOHN KEANE / BREIT BAUKS