



DDC

RM-13769

1":100' - MD

10/14/2013 1:34:01 AM

Oper. Company: Noble Energy Inc.
Country: USA
State / Province: CO
County / Parish: Weld
Started: 10/08/2013 03:00 PM

API/UWI: 05-123-37533
Field: Wattenberg
Well: Rohn State LD09-64HN
Rig: H&P 326
Ended: 10/14/2013 01:30 AM

Personnel

Day Hand: Josh Jann
Night Hand: Bob Kubistek
Comp. Emp: DDC

Location

Latitude: 40° 45' 51.516 N
Longitude: 103° 51' 41.940 W
Elev. GL: 4716
Elev. DF: 30
Elev. KB: 4746

Well Name: Rohn State LD09-64HN

Hole Data

Size	From	To
13 3/4"	0	1272
8 3/4"	1272	6062
6 1/8"	6062	9631

Casing Data

Size	From	To
9 5/8"	0	1272
7"	0	6062
4 1/2"	0	9631

Bit Sizes

Size	From	To
13 3/4"	0	1272
8 3/4"	1272	6062
6 1/8"	6062	9631

Mud Data

Type	Weight	Density	Viscosity	Rm	Rmf	Rmc	From	To
LSND	10.1	0	36				0	0

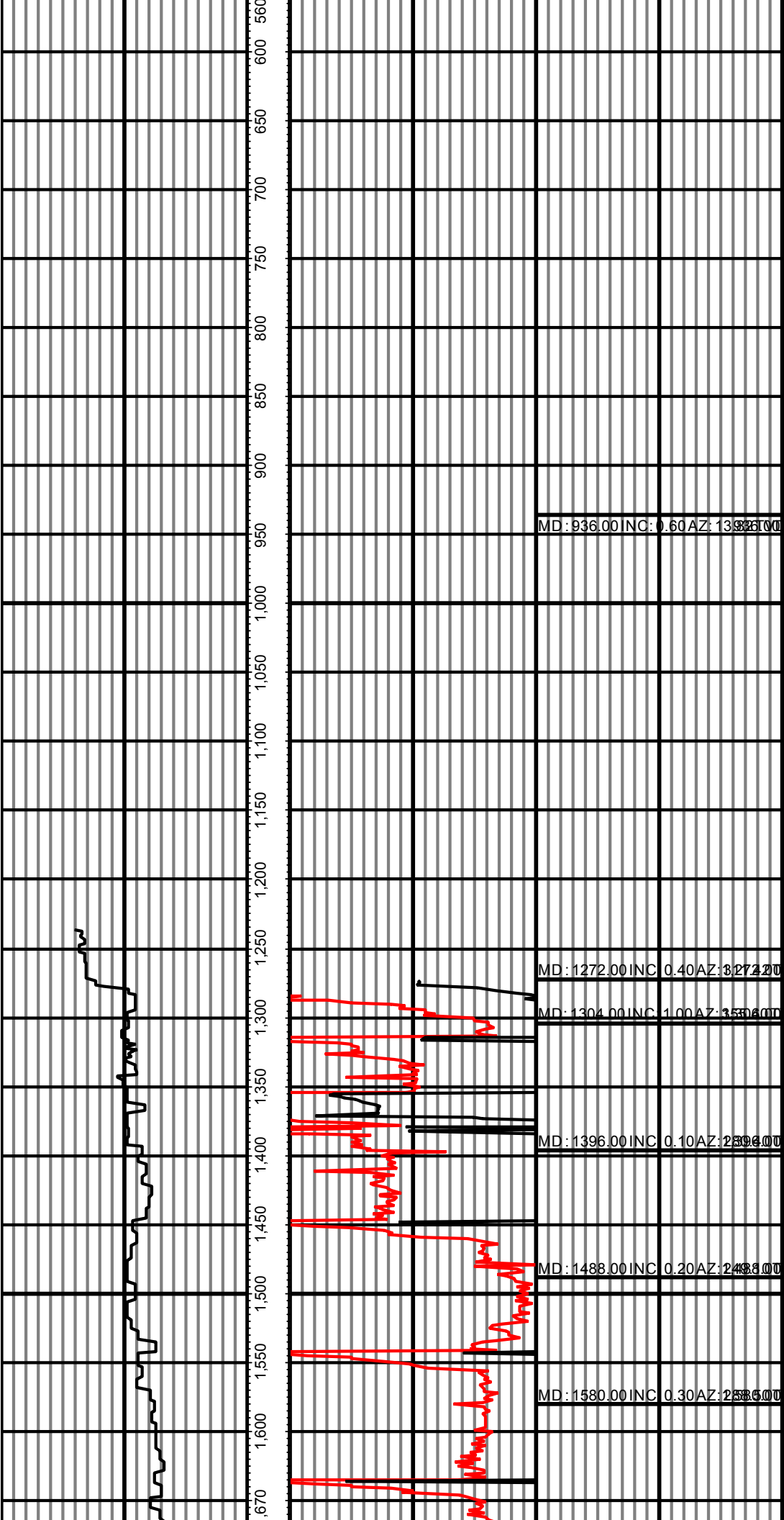
Tool Run Data

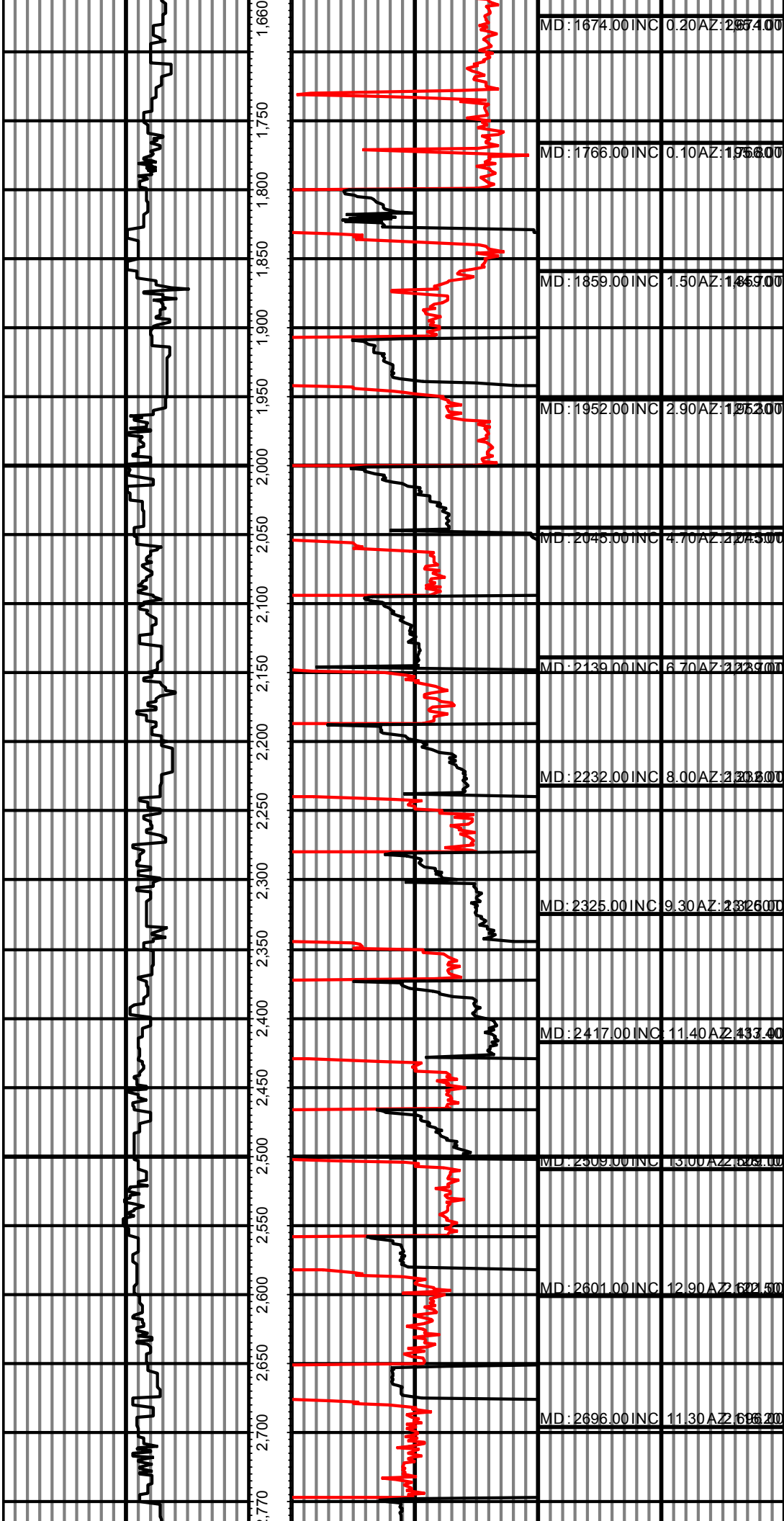
Serial Number	Gamma Offset	Resist. Offset	Start Time	Start Depth	End Time	End Depth
188	37	0	10/8/2013 3:04:44 PM	1272	10/9/2013 11:30:44 PM	4920
188	45	0	10/9/2013 1:00:02 PM	4920	10/10/2013 8:00:02 AM	6062
188	51	0	10/11/2013 8:03:27 AM	6062	10/13/2013 10:37:27 PM	6896
188	51	0	10/12/2013 5:45:22 AM	6896	10/13/2013 10:42:22 PM	7930
4581	51	0	10/13/2013 3:45:29 AM	7930	10/14/2013 12:30:29 AM	9631

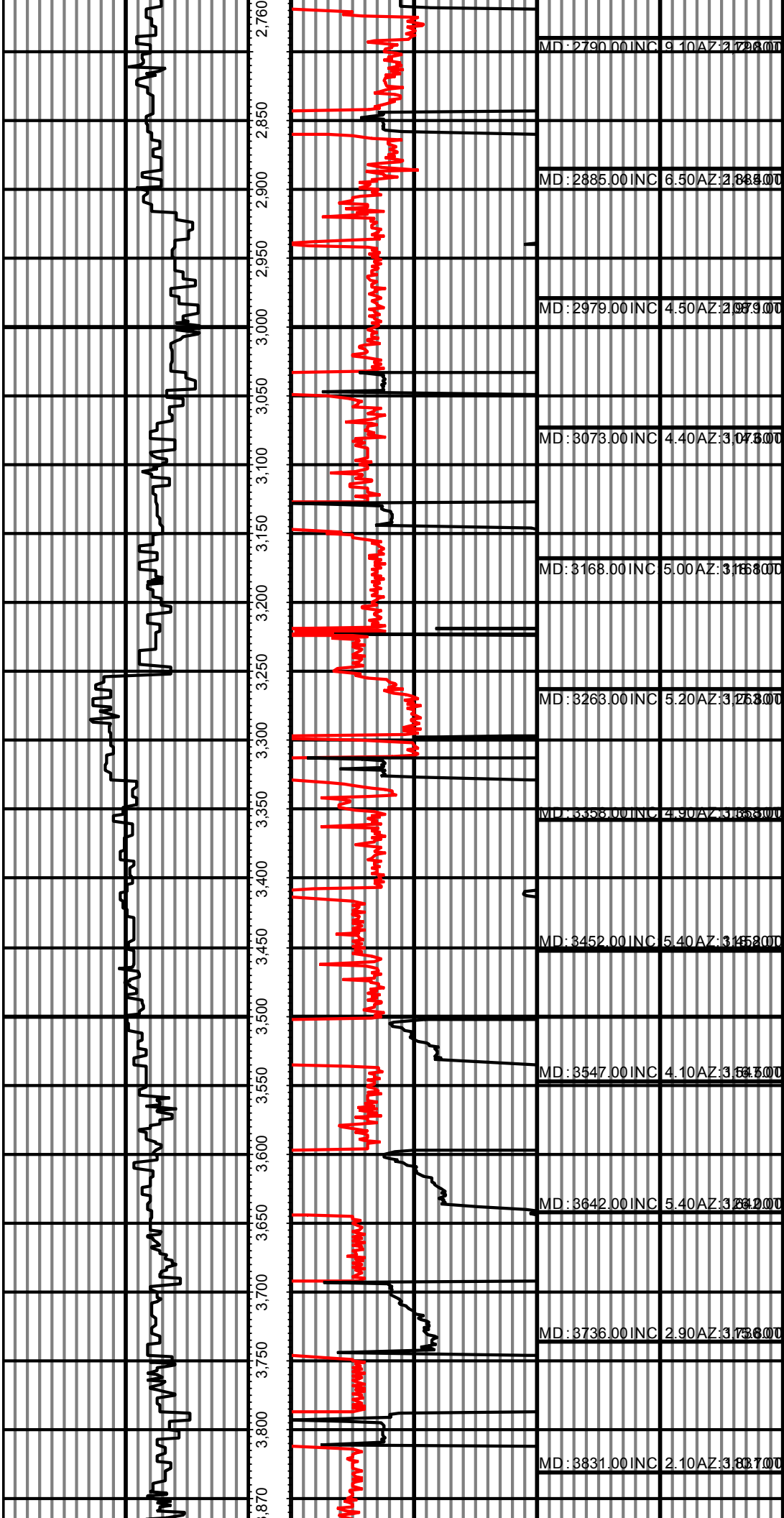
All interpretations are opinions based on inferences from electrical or other measurements and we cannot and do not guarantee the accuracy or correctness of any interpretation, and we shall not except in the case of gross or willful negligence on our part, be liable or responsible for any loss, cost damages or expenses incurred or sustained by anyone resulting from an interpretation made by any of our officers, agents, or employees.

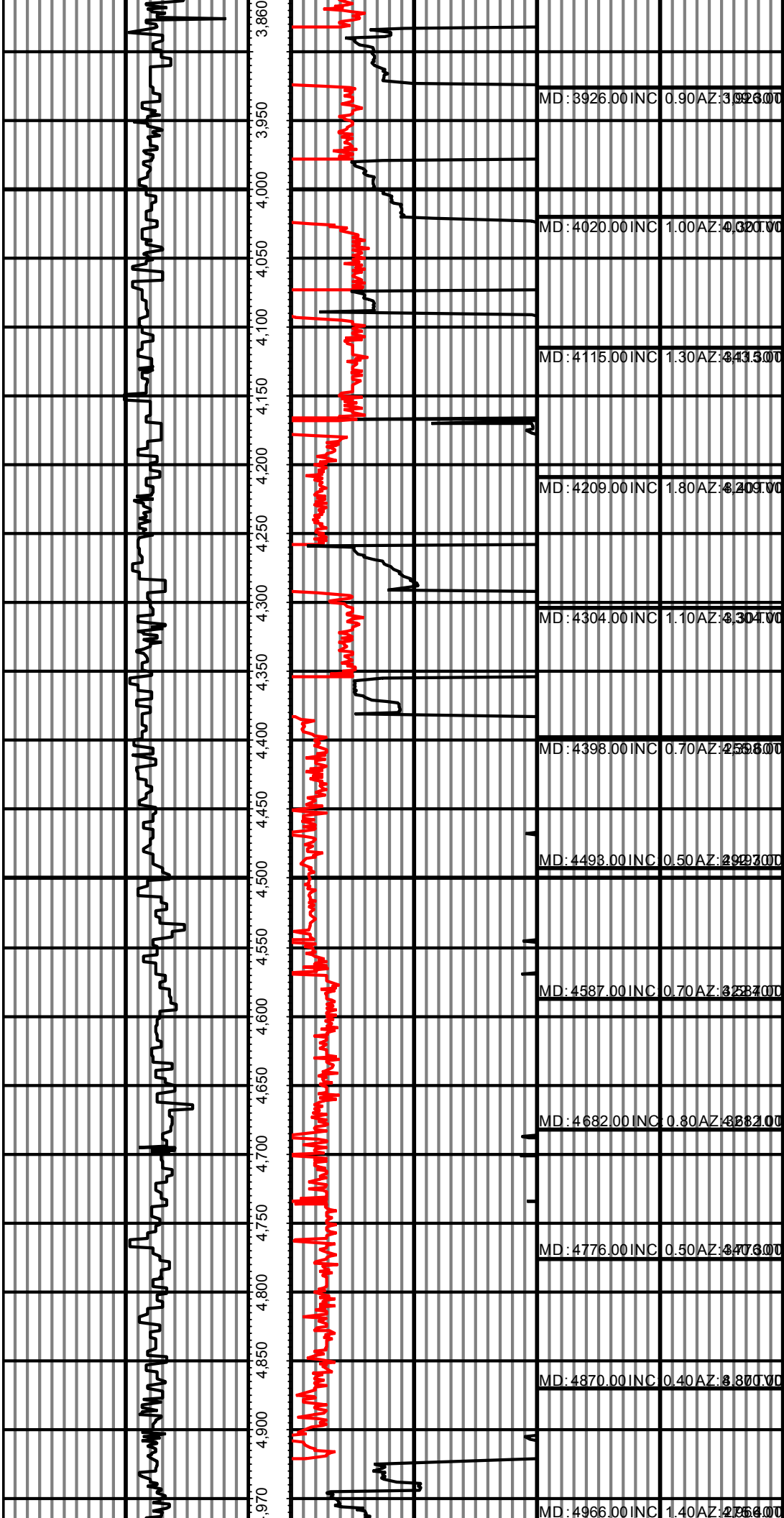
0.00 Gama(mG) on MD 127.50 MD 0.00 ROP(FT/HR) on MD 668.65 Surveys(MD/INC/AZ/TVDNS)
 127.50 2 255.00 FT 668.65 2 1,337.30

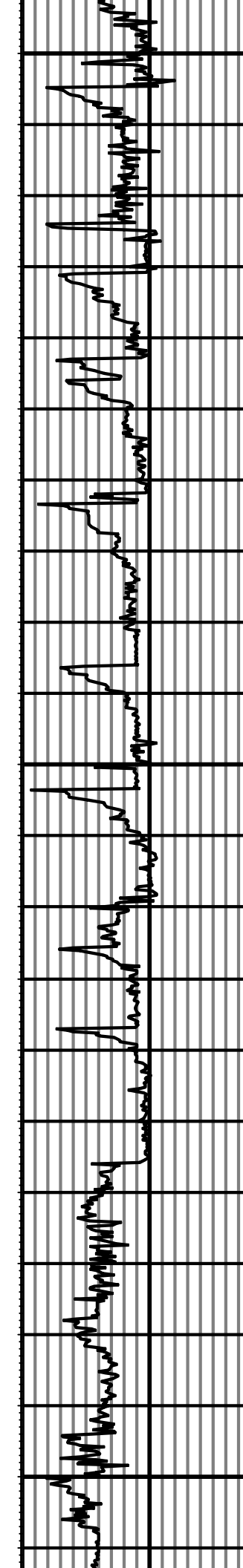
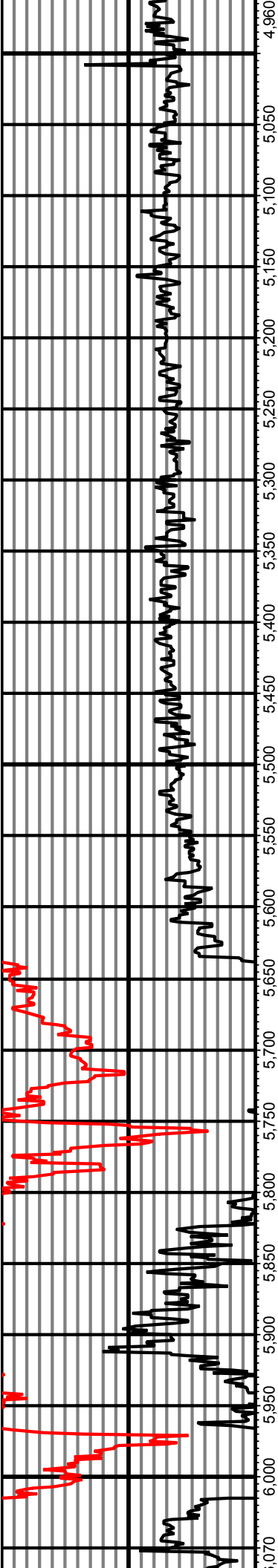
		473			MD: 473.00 INC: 0.40 AZ: 298.72 TVD: 0
		500			
		550			
		570			



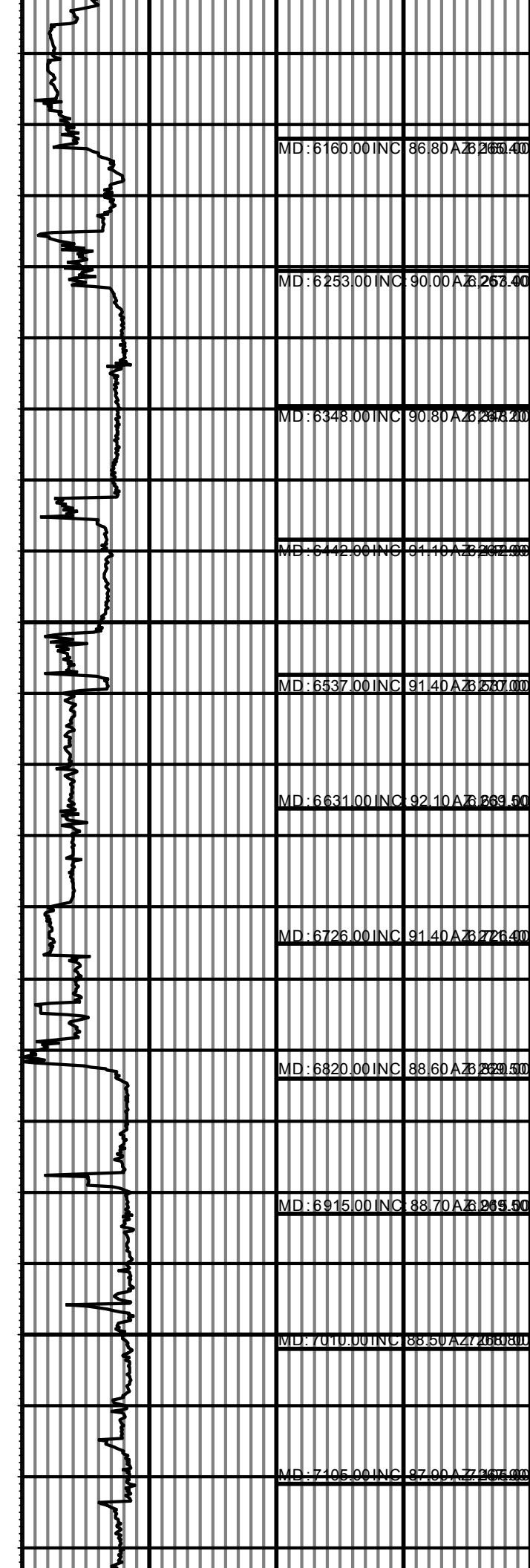
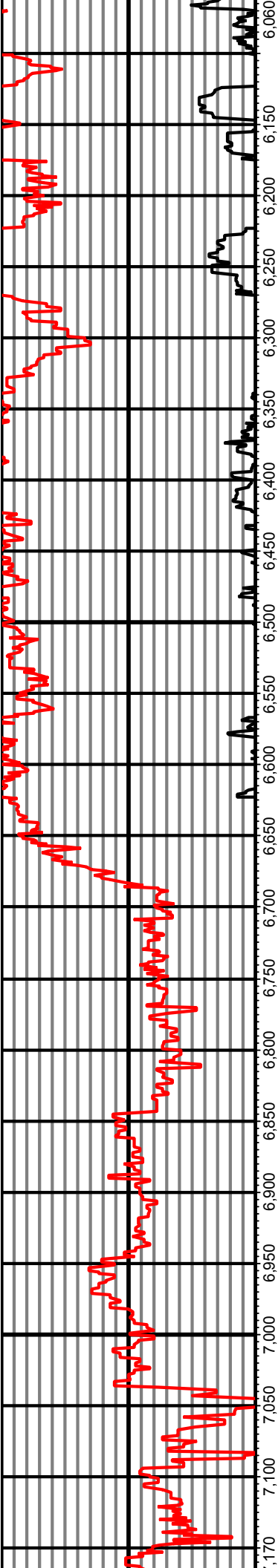








MD: 4966.00 INC	1.40 AZ: 2364.00
MD: 5061.00 INC	13.20 AZ: 262.60
MD: 5155.00 INC	17.50 AZ: 2735.40
MD: 5250.00 INC	26.00 AZ: 2750.20
MD: 5344.00 INC	34.70 AZ: 283.60
MD: 5439.00 INC	41.10 AZ: 249.80
MD: 5538.00 INC	49.30 AZ: 258.10
MD: 5628.00 INC	53.50 AZ: 524.70
MD: 5722.00 INC	65.00 AZ: 2729.00
MD: 5817.00 INC	70.90 AZ: 2707.50
MD: 5912.00 INC	71.60 AZ: 242.80
MD: 6005.00 INC	82.40 AZ: 2730.40



MD: 6160.00 INC 86.80 AZ 265.40

MD: 6253.00 INC 90.00 AZ 267.40

MD: 6348.00 INC 90.80 AZ 268.20

MD: 6442.00 INC 91.40 AZ 269.00

MD: 6537.00 INC 91.40 AZ 269.00

MD: 6631.00 INC 92.10 AZ 269.50

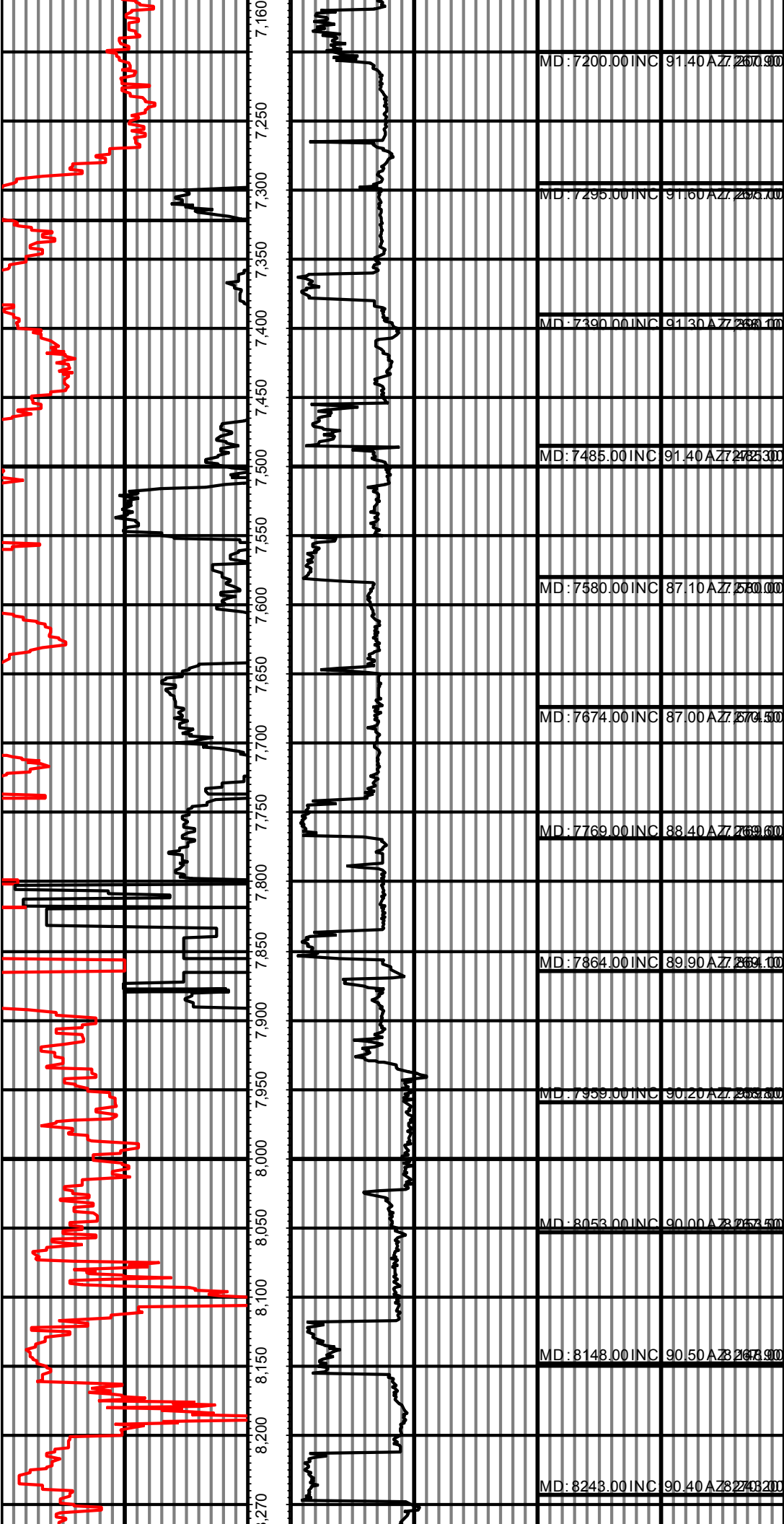
MD: 6726.00 INC 91.40 AZ 276.40

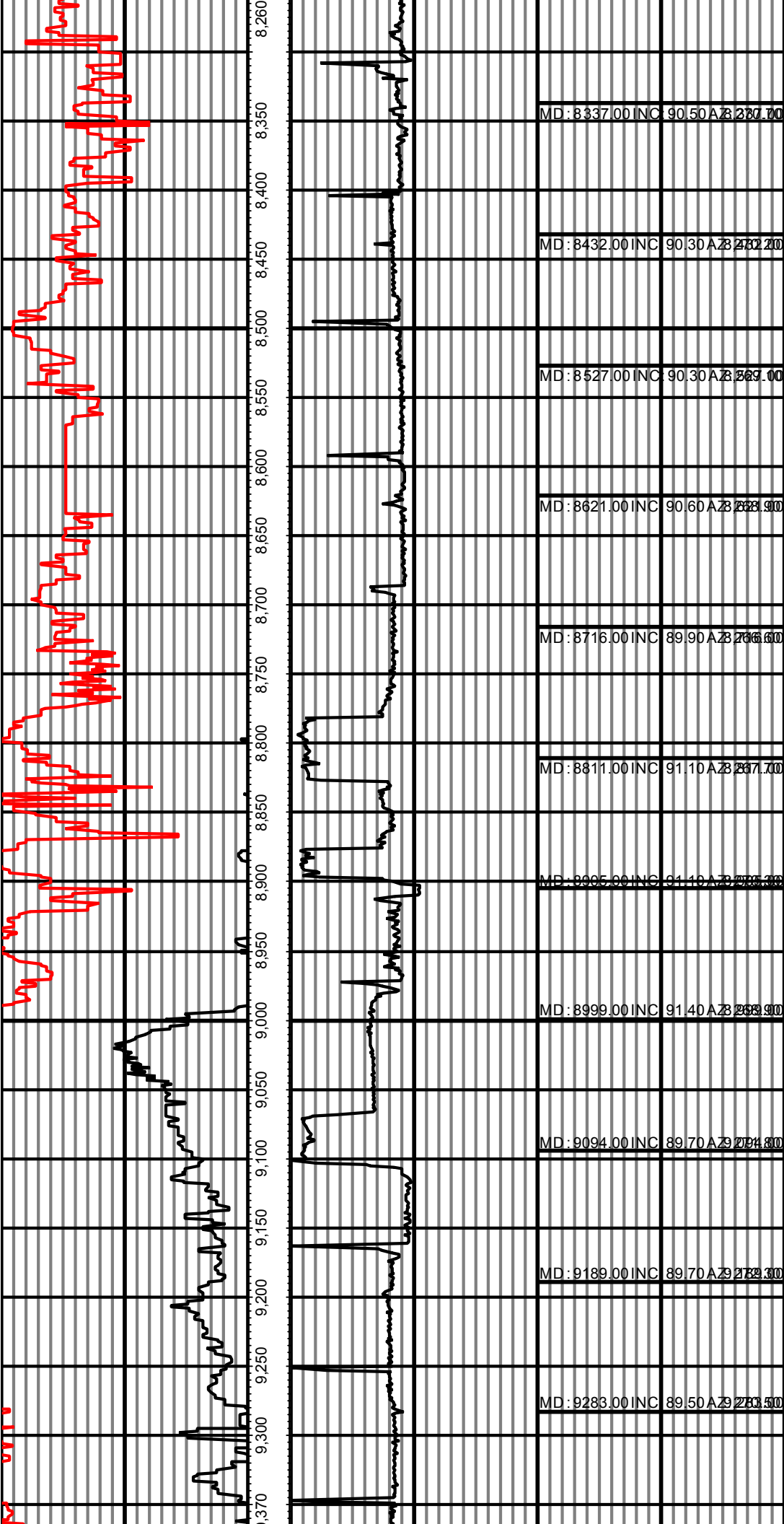
MD: 6820.00 INC 88.60 AZ 282.50

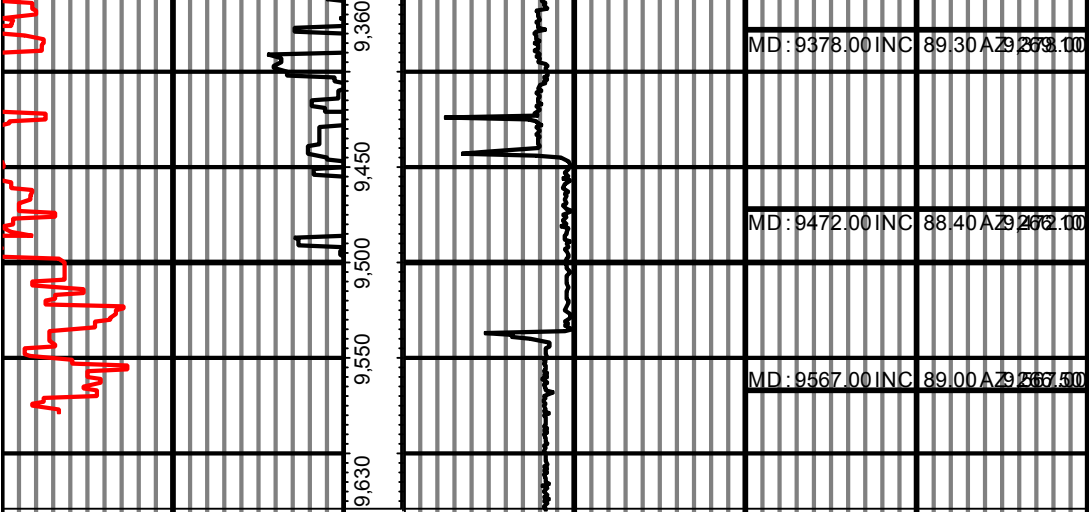
MD: 6915.00 INC 88.70 AZ 269.50

MD: 7010.00 INC 88.50 AZ 268.80

MD: 7105.00 INC 87.90 AZ 269.00







0.00 Gama(mG) on MD 127.50 MD 0.00 ROP(FT/HR) on MD 668.65 Surveys (MD/INC/AZ/TVD/S)

127.50 2 255.00 FT 668.65 2 1,337.30