



**RADIAL CEMENT BOND
GAMMA RAY
CCL**

Company KERR MCGEE OIL AND GAS
Well BULTHAUP 9-6
Field WATTENBERG
County WELD State CO

Location: SHL 2121' FSL 2136' FEL NW/SE
API # : 05-123-29465

Other Services

SEC 6 TWP 1N RGE 68W

Permanent Datum	GL	Elevation	5013	Elevation
Log Measured From	KB 14'			KB. 5027'
Drilling Measured From	KB			D.F. 5026'
				G.L. 5013'

Date 1-6-14

Run Number	1		
Depth Driller	8615'		
Depth Logger	4016'		
Bottom Logged Interval	4013'		
Top Log Interval	1600'		
Open Hole Size	7.875		
Type Fluid	WATER		
Density / Viscosity	1.0		
Max. Recorded Temp.	122		
Estimated Cement Top	1846'		
Time Well Ready	N/A		
Time Logger on Bottom	N/A		
Equipment Number	4310		
Location	GREELEY		
Recorded By	N. BREHMER		
Witnessed By	J. CHANDLER		

Borehole Record				Tubing Record			
Run Number	Bit	From	To	Size	Weight	From	To
ONE							
TWO							

Casing Record	Size	Wgt/Ft	Top	Bottom
Surface String	8.63	24#	0	704'
Prot. String				
Production String	4.5	11.6	0	8601'
Liner				

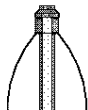
<<< Fold Here >>>

All interpretations are opinions based on inferences from electrical or other measurements and we cannot and do not guarantee the accuracy or correctness of any interpretation, and we shall not, except in the case of gross or willful negligence on our part, be liable or responsible for any loss, costs, damages, or expenses incurred or sustained by anyone resulting from any interpretation made by any of our officers, agents or employees. These interpretations are also subject to our general terms and conditions set out in our current Price Schedule.

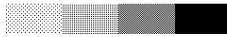

Comments

RAN CBL TO VERIFY CEMENT BOND

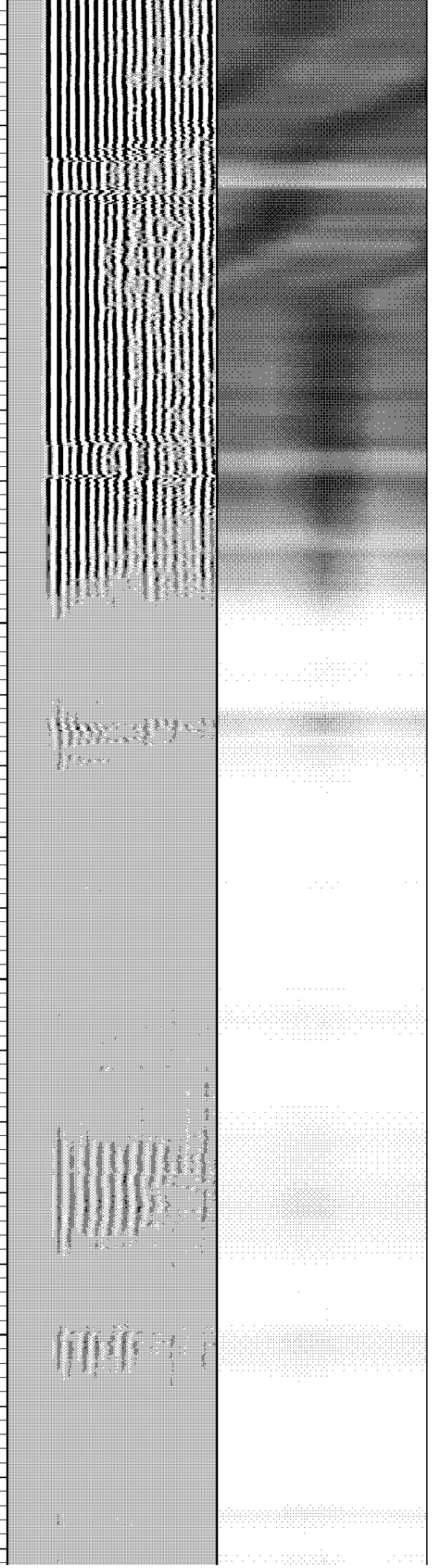
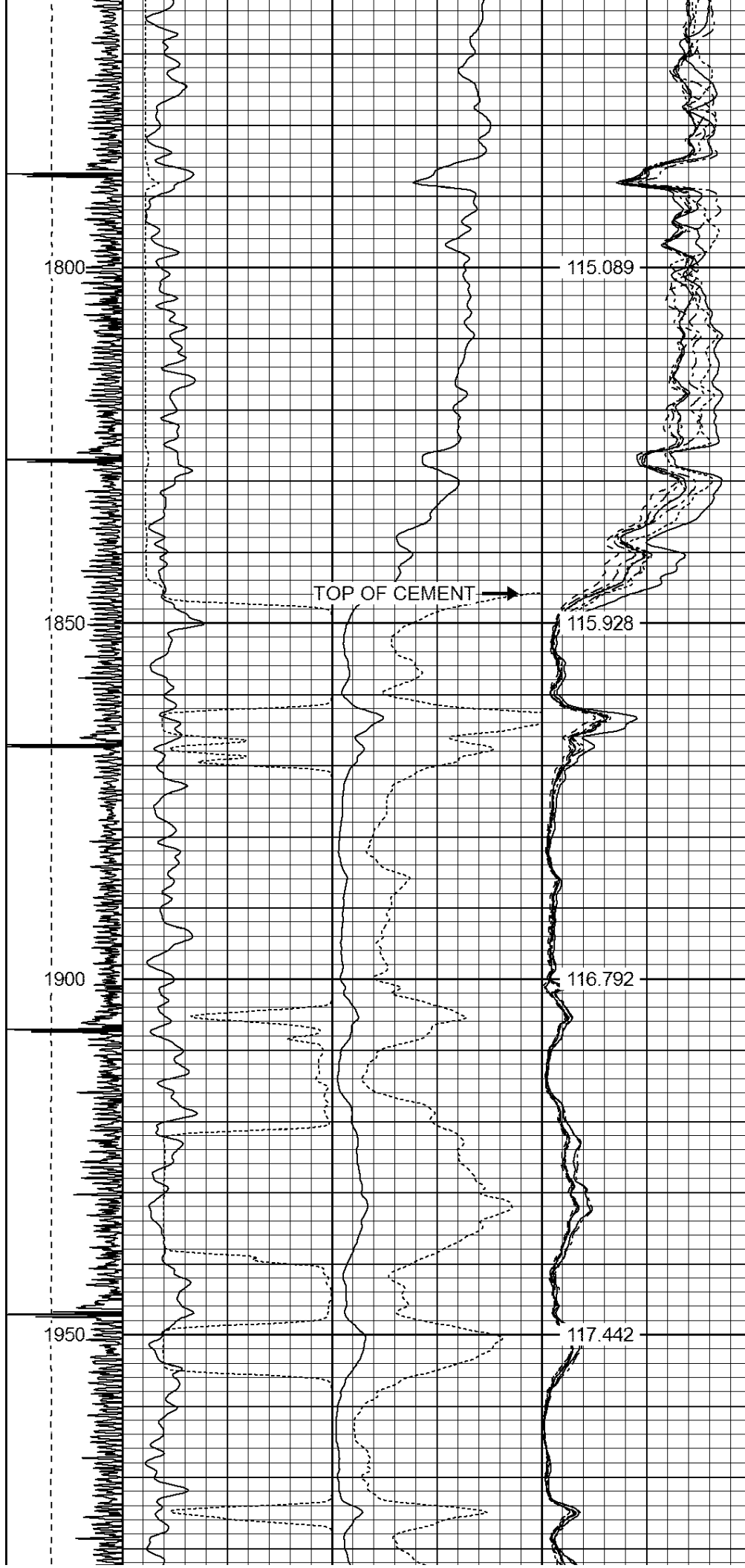
THANK YOU FOR USING WARRIOR !!!!!!!

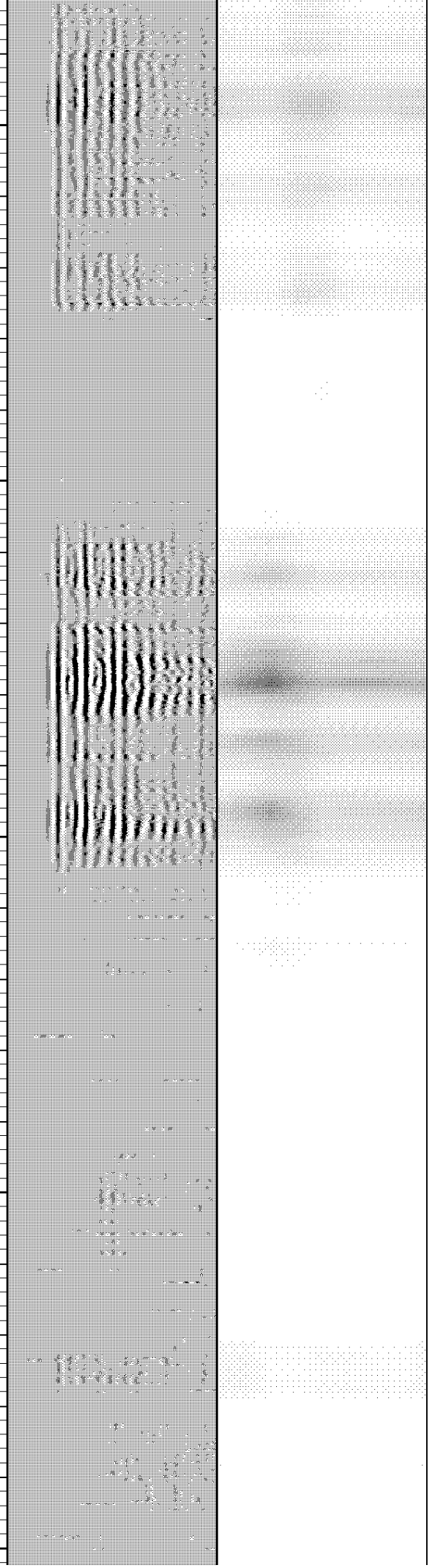
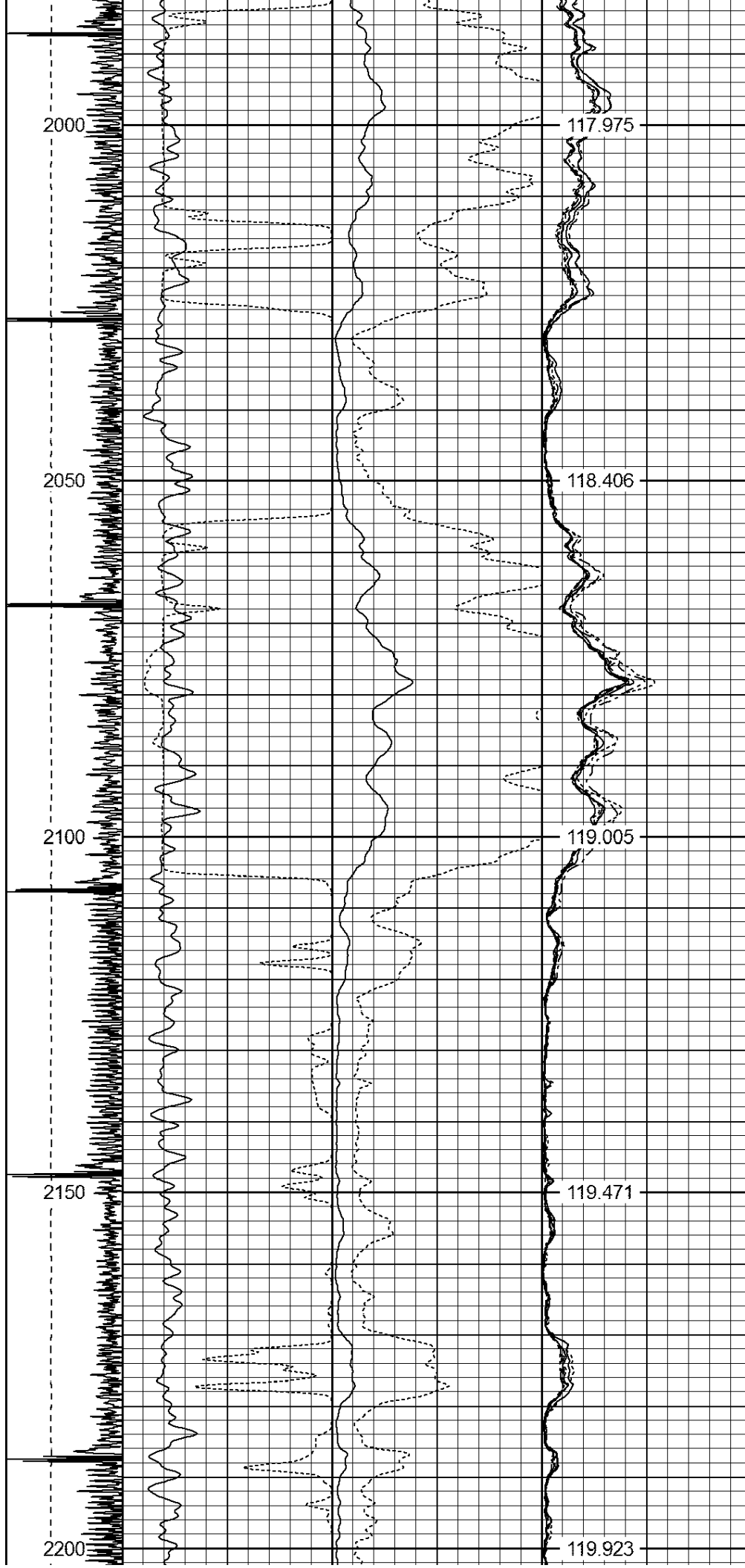
Sensor	Offset (ft)	Schematic	Description	Len (ft)	OD (in)	Wt (lb)
						

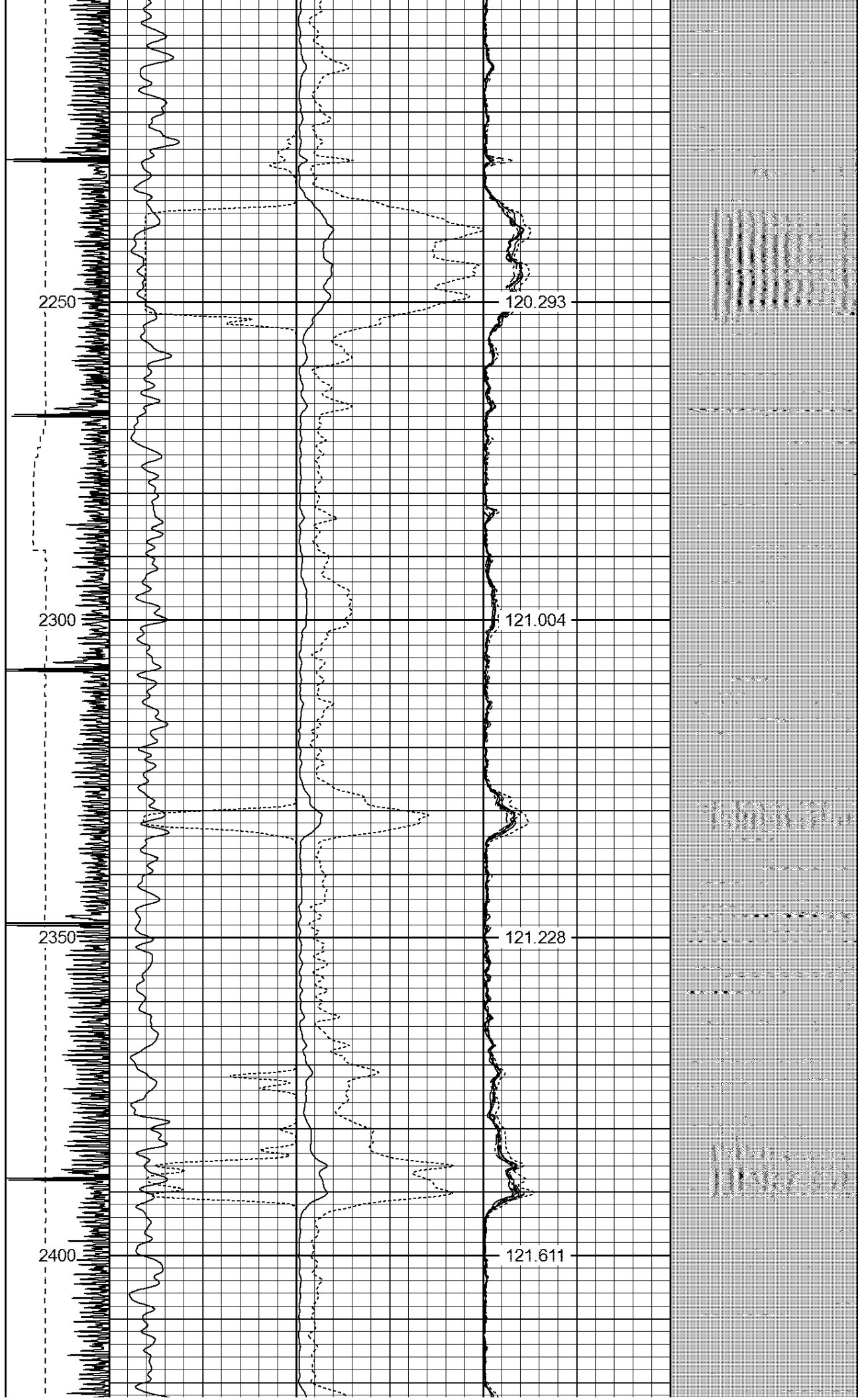
[illegible]

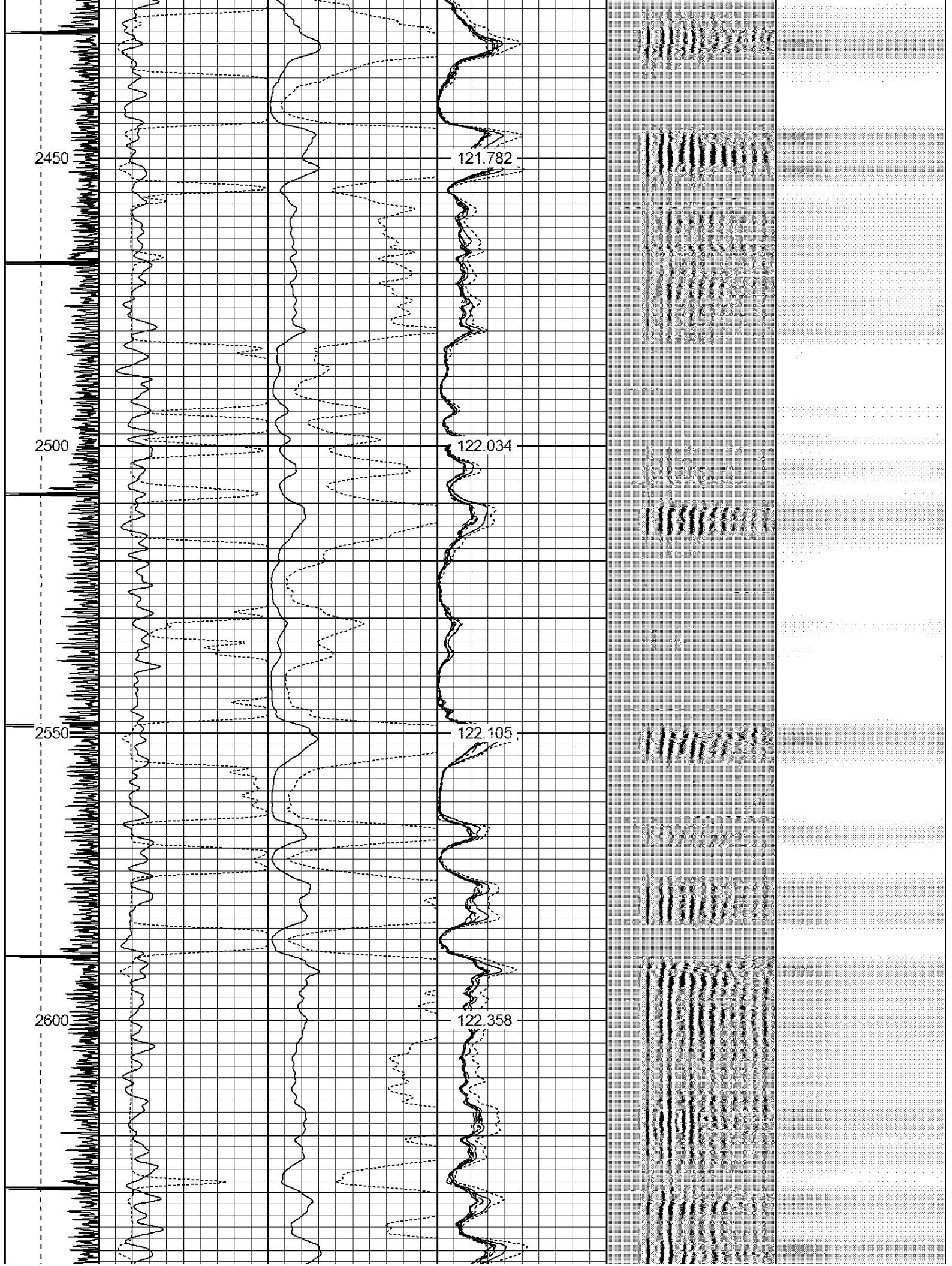
-9	CCL	1	200	TT (usec)	800	0	AMP (mV)	100	0	AMPS1	100	200	VDL	1200	1	Cement Map	8								
LSPD (ft/min)	0		GR (GAPI)		200	0	AMPx5 (mV)		20	0	AMPS2	100			1	100									
	200		GR (GAPI)		400					0	AMPS4	100													
0	250										0	AMPS5	100												
										0	AMPS6	100													
										0	AMPS7	100													
										0	AMPS8	100													
											IntTemp														
											(degF)														



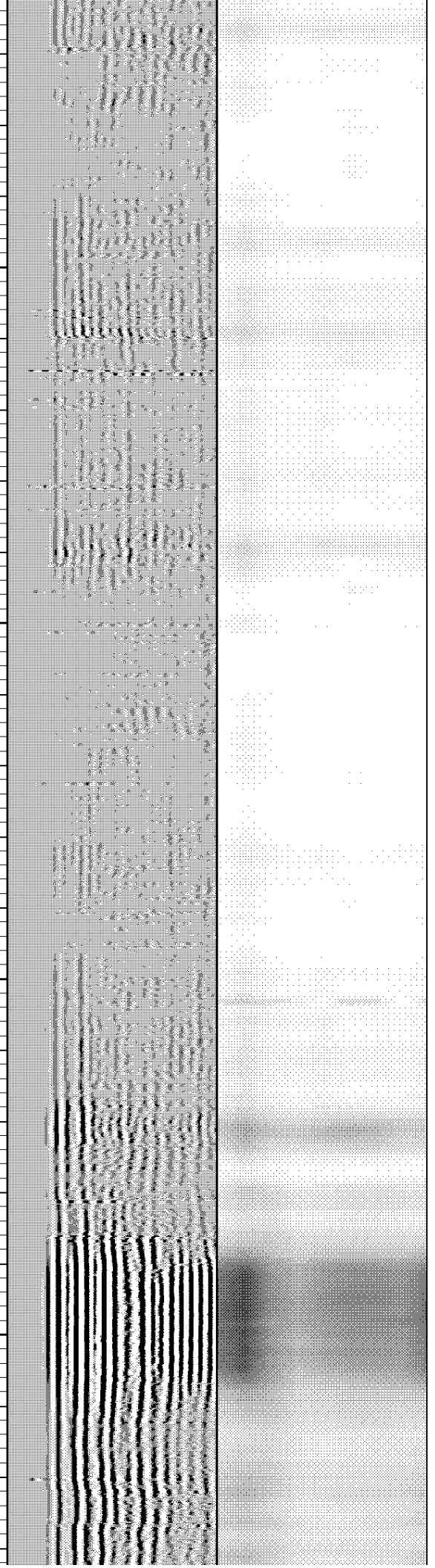
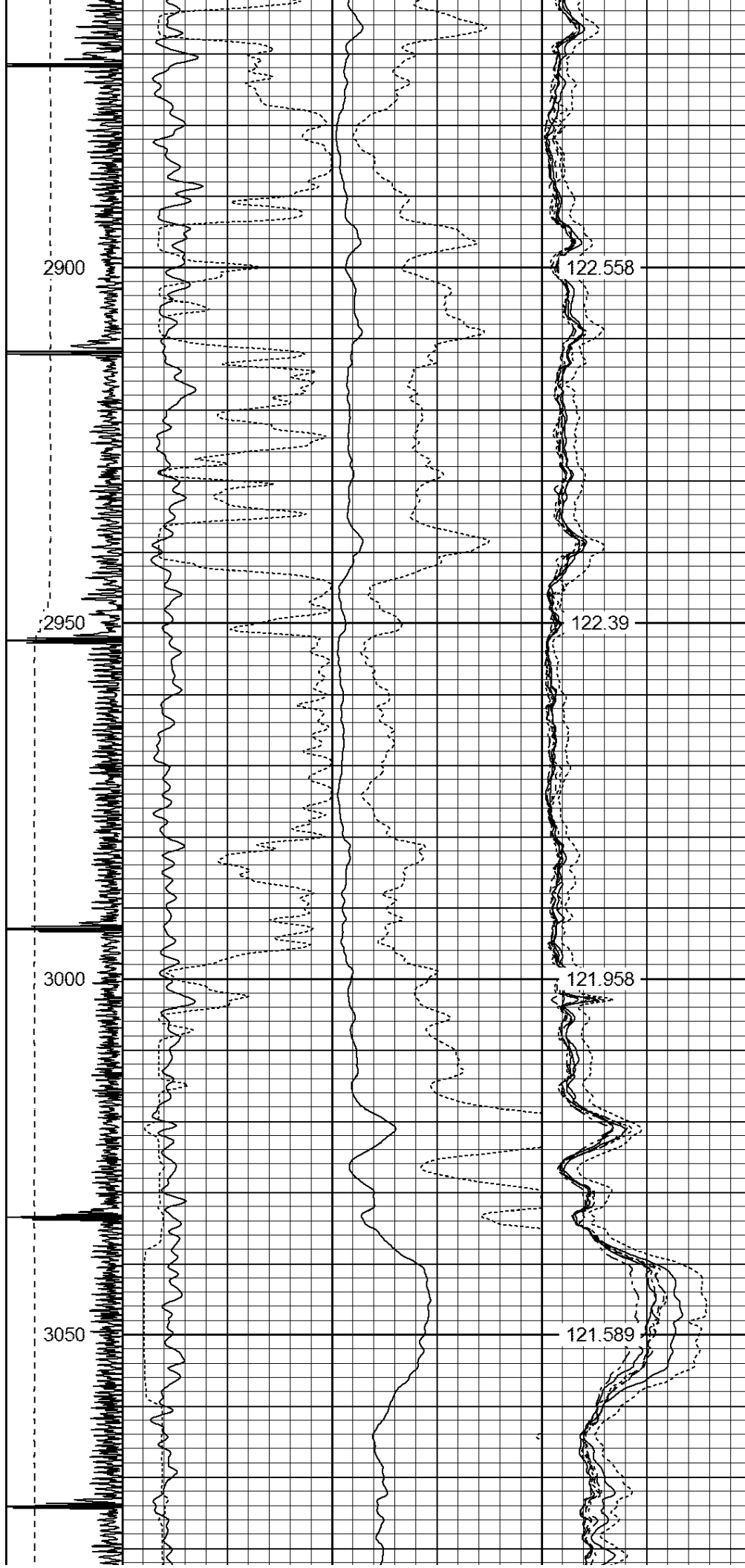


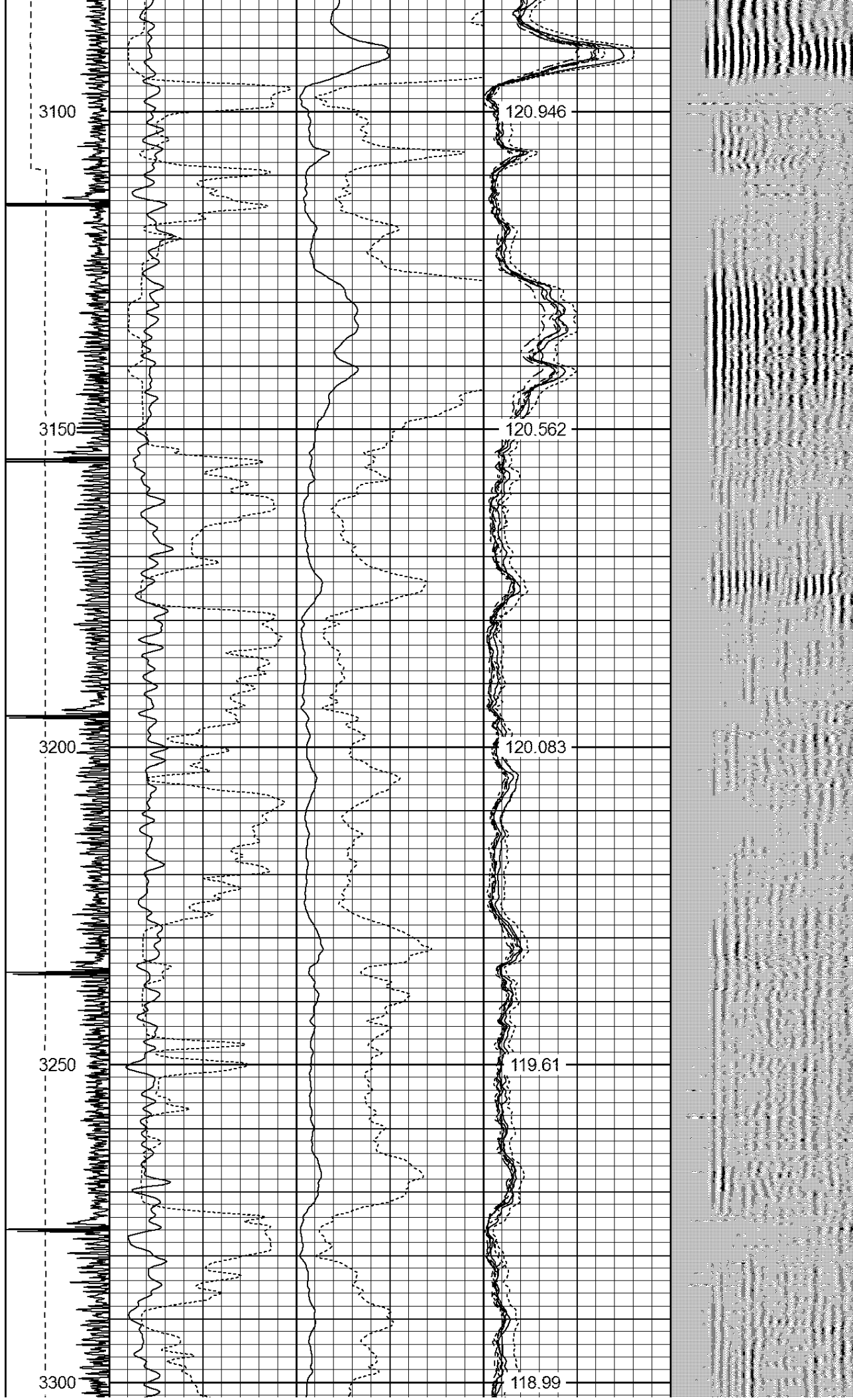


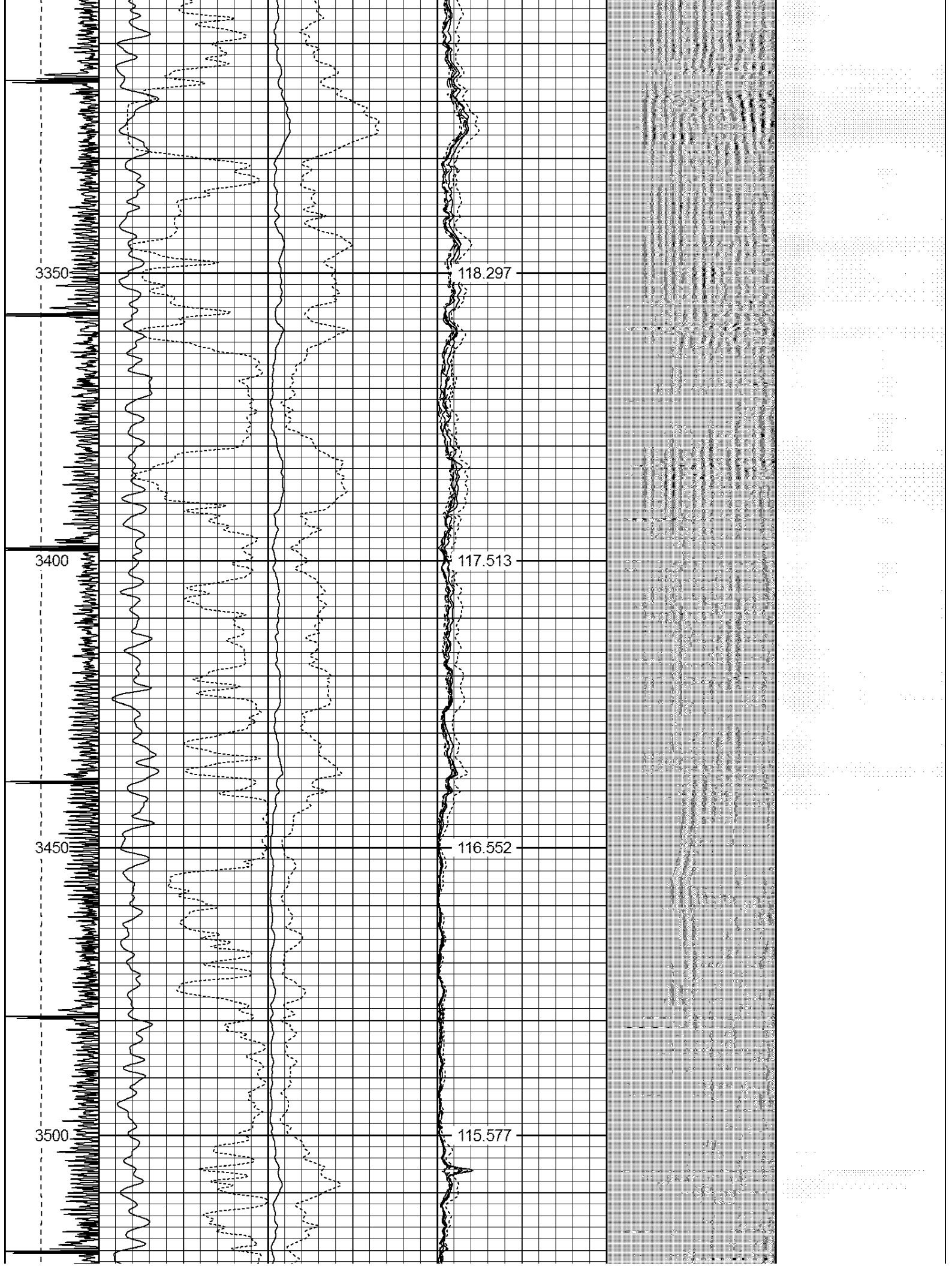




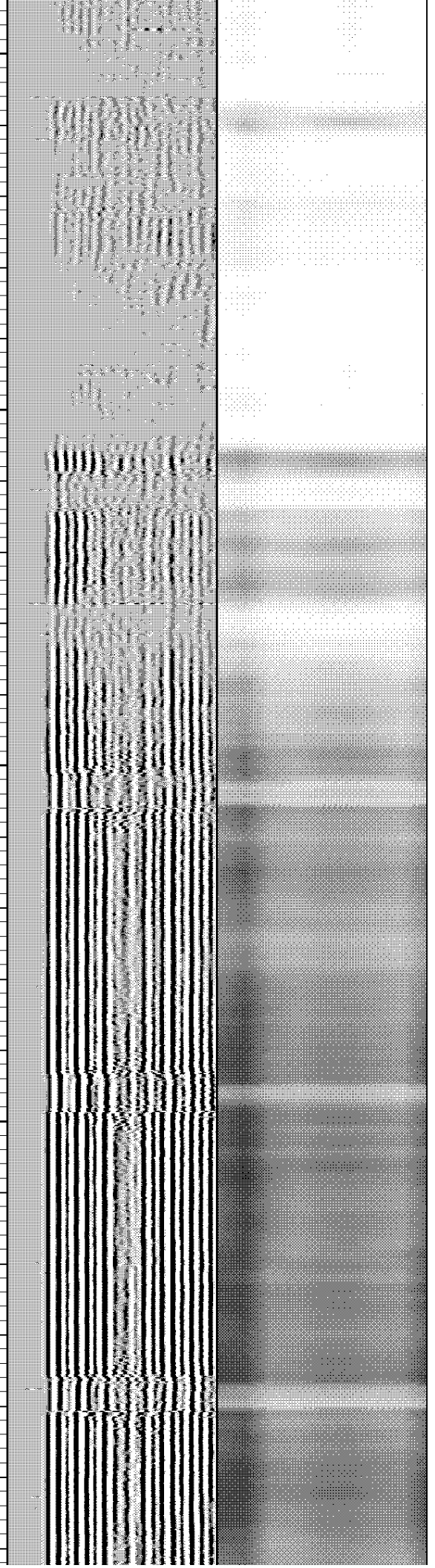
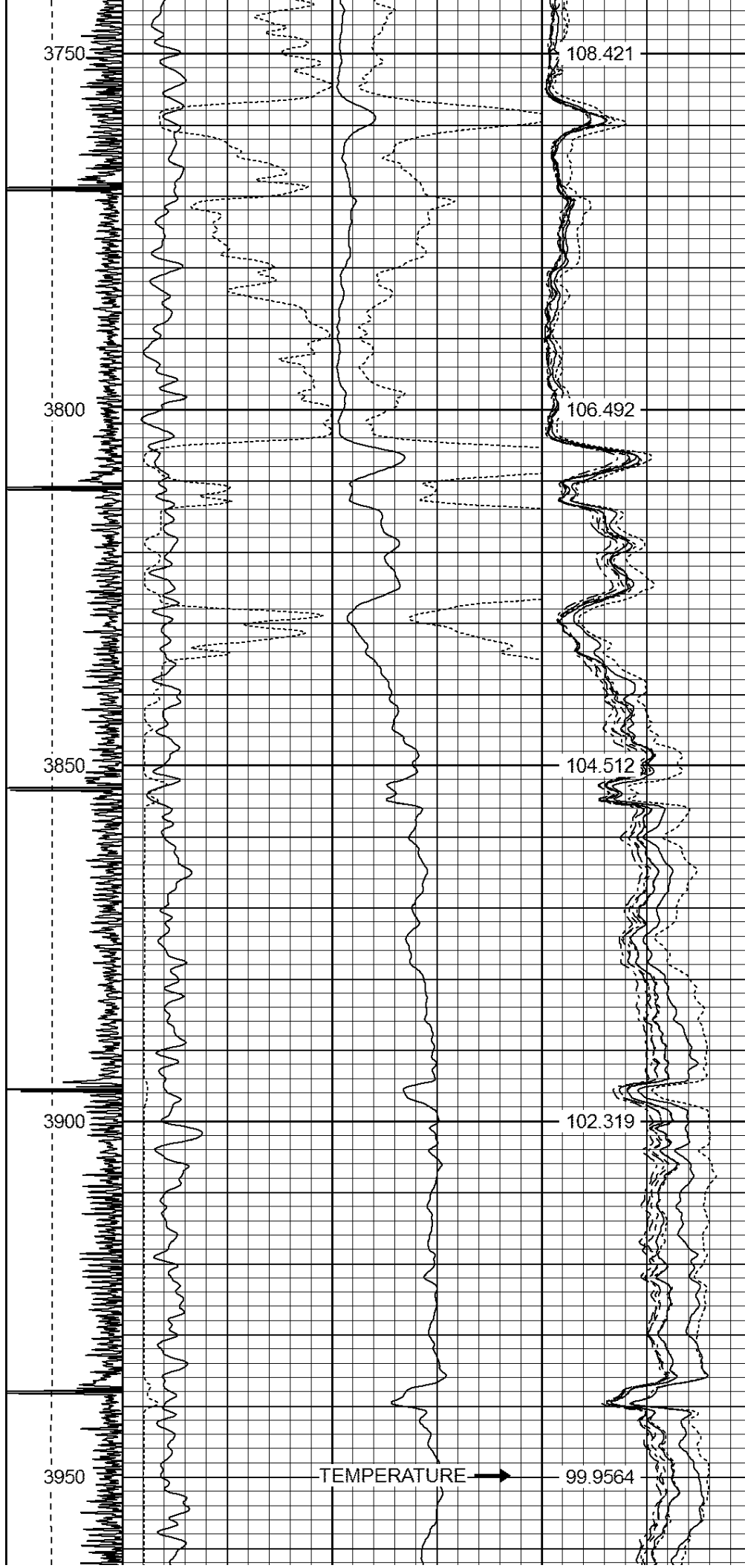


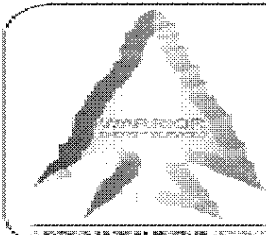
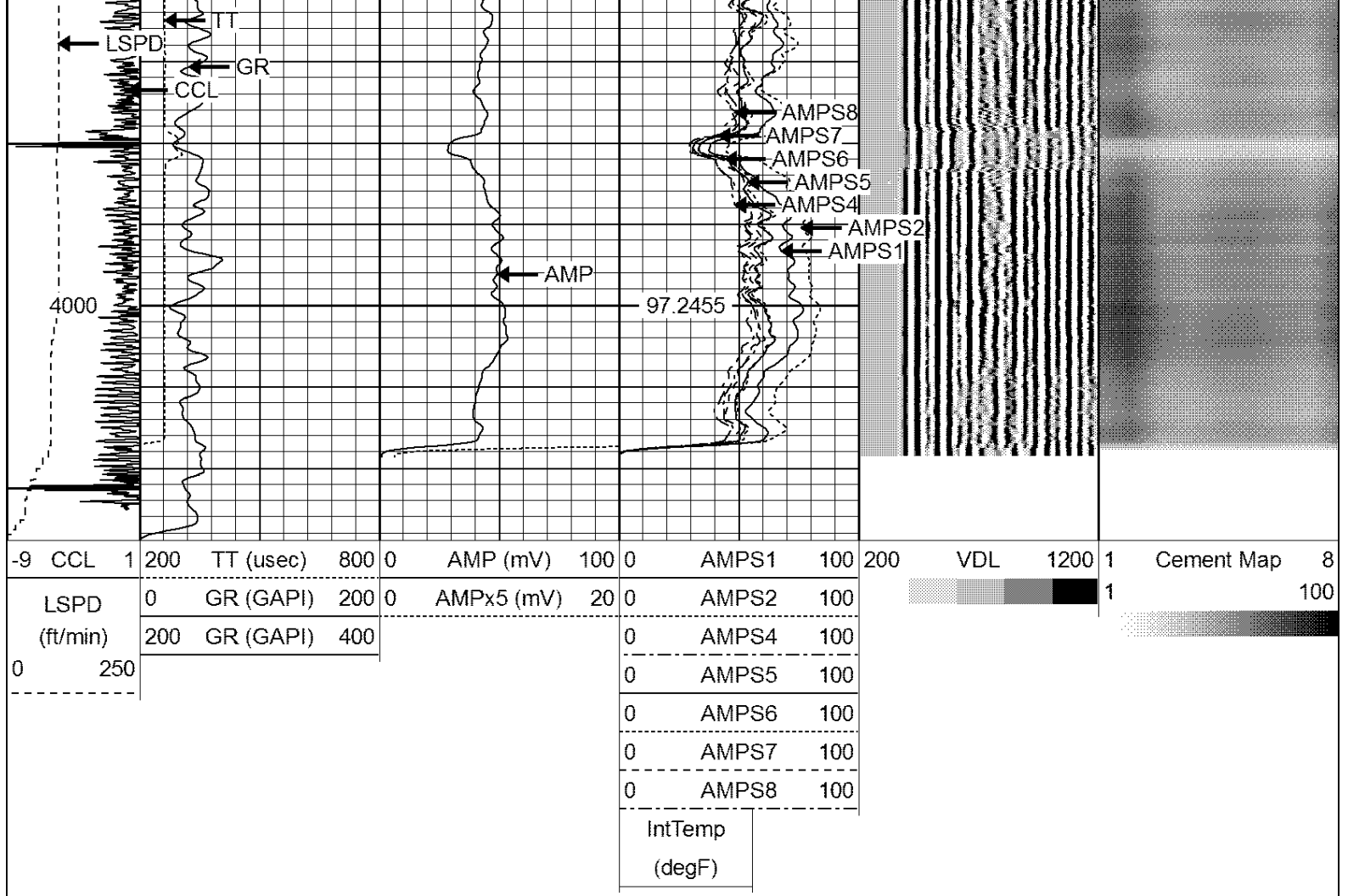












WARRIOR
ENERGY SERVICES

Company KERR McGEE OIL AND GAS

Well BULTHAUP 9-6

Field WATTENBERG

County WELD

State CO