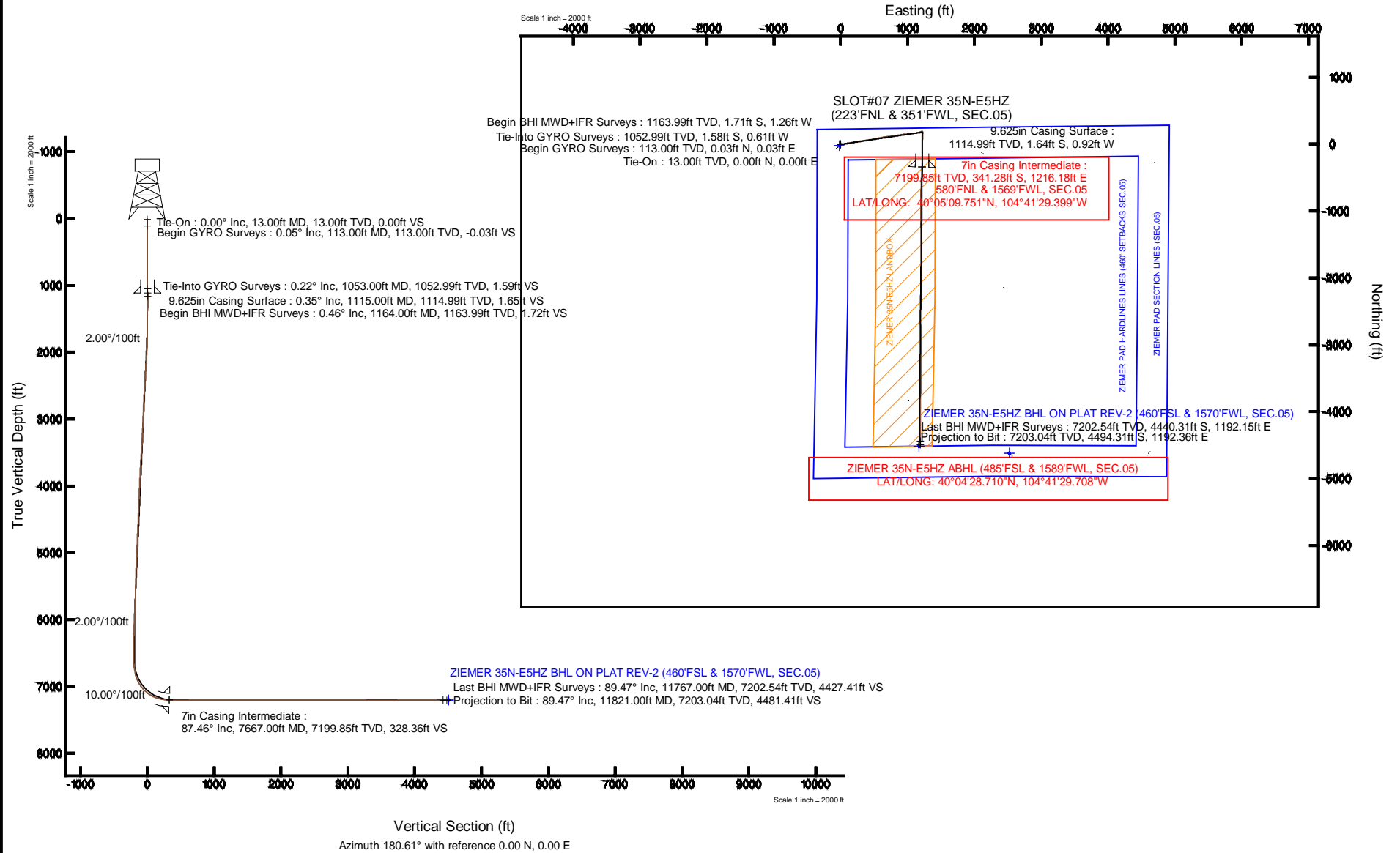


# KERR-MCGEE OIL & GAS ONSHORE LP

Location: COLORADO Slot: SLOT#07 ZIEMER 35N-E5HZ (223'FNL & 351'FWL, SEC.05)  
 Field: WELD COUNTY (KERR MCGEE) Well: ZIEMER 35N-E5HZ  
 Facility: SEC.05-T1N-R65W Wellbore: ZIEMER 35N-E5HZ PWB

Plot reference wellpath is ZIEMER 35N-E5HZ (REV-B.0) PWB

True vertical depths are referenced to ENSIGN 145 (13KB) (RKB)	Grid System: NAD83 / Lambert Colorado SP, Northern Zone (501), US feet
Measured depths are referenced to ENSIGN 145 (13KB) (RKB)	North Reference: True north
ENSGN 145 (13KB) (RKB) to Mean Sea Level: 4970 feet	Scale: True distance
Mean Sea Level to Mud line (At Slot: SLOT#07 ZIEMER 35N-E5HZ (223'FNL & 351'FWL, SEC.05)): 0 feet	Depths are in feet
Coordinates are in feet referenced to Slot	Created by: preccain on 15/Jan/2014



Vertical Section (ft)  
 Azimuth 180.61° with reference 0.00 N, 0.00 E

Scale 1 inch = 2000 ft

REFERENCE WELLPATH IDENTIFICATION			
Operator	KERR-MCGEE OIL & GAS ONSHORE LP	Slot	SLOT#07 ZIEMER 35N-E5HZ (223'FNL & 351'FWL, SEC.05)
Area	COLORADO	Well	ZIEMER 35N-E5HZ
Field	WELD COUNTY (KERR MCGEE)	Wellbore	ZIEMER 35N-E5HZ AWB
Facility	SEC.05-T1N-R65W		

REPORT SETUP INFORMATION			
Projection System	NAD83 / Lambert Colorado SP, Northern Zone (501), US feet	Software System	WellArchitect® 4.0.0
North Reference	True	User	Precain
Scale	0.999961	Report Generated	15/Jan/2014 at 11:04
Convergence at slot	n/a	Database/Source file	WellArchitectDB/ZIEMER_35N-E5HZ_AWB.xml

WELLPATH LOCATION						
	Local coordinates		Grid coordinates		Geographic coordinates	
	North[ft]	East[ft]	Easting[US ft]	Northing[US ft]	Latitude	Longitude
Slot Location	2334.69	-2258.83	3224996.18	1275551.32	40°05'13.124"N	104°41'45.046"W
Facility Reference Pt			3227276.21	1273237.51	40°04'50.053"N	104°41'15.984"W
Field Reference Pt			3197771.84	1268891.29	40°04'09.600"N	104°47'36.000"W

WELLPATH DATUM			
Calculation method	Minimum curvature	ENSIGN 145 (13'KB) (RKB) to Facility Vertical Datum	4970.00ft
Horizontal Reference Pt	Slot	ENSIGN 145 (13'KB) (RKB) to Mean Sea Level	4970.00ft
Vertical Reference Pt	ENSIGN 145 (13'KB) (RKB)	ENSIGN 145 (13'KB) (RKB) to Mud Line at Slot (SLOT#07 ZIEMER 35N-E5HZ (223'FNL & 351'FWL, SEC.05))	4970.00ft
MD Reference Pt	ENSIGN 145 (13'KB) (RKB)	Section Origin	N 0.00, E 0.00 ft
Field Vertical Reference	Mean Sea Level	Section Azimuth	180.61°

REFERENCE WELLPATH IDENTIFICATION			
Operator	KERR-MCGEE OIL & GAS ONSHORE LP	Slot	SLOT#07 ZIEMER 35N-E5HZ (223'FNL & 351'FWL, SEC.05)
Area	COLORADO	Well	ZIEMER 35N-E5HZ
Field	WELD COUNTY (KERR MCGEE)	Wellbore	ZIEMER 35N-E5HZ AWB
Facility	SEC.05-T1N-R65W		

WELLPATH DATA (141 stations) † = interpolated/extrapolated station										
MD [ft]	Inclination [°]	Azimuth [°]	TVD [ft]	Vert Sect [ft]	North [ft]	East [ft]	Latitude	Longitude	DLS [°/100ft]	Comments
0.00†	0.000	37.280	0.00	0.00	0.00	0.00	40°05'13.124"N	104°41'45.046"W	0.00	
13.00	0.000	37.280	13.00	0.00	0.00	0.00	40°05'13.124"N	104°41'45.046"W	0.00	Tie-On
113.00	0.050	37.280	113.00	-0.03	0.03	0.03	40°05'13.124"N	104°41'45.046"W	0.05	Begin GYRO Surveys
213.00	0.160	107.820	213.00	-0.03	0.03	0.19	40°05'13.124"N	104°41'45.044"W	0.15	
313.00	0.170	172.330	313.00	0.16	-0.16	0.34	40°05'13.122"N	104°41'45.042"W	0.18	
413.00	0.230	167.940	413.00	0.50	-0.51	0.40	40°05'13.119"N	104°41'45.041"W	0.06	
513.00	0.180	124.480	513.00	0.79	-0.79	0.57	40°05'13.116"N	104°41'45.039"W	0.16	
613.00	0.150	190.180	613.00	1.00	-1.01	0.68	40°05'13.114"N	104°41'45.037"W	0.18	
713.00	0.020	191.980	713.00	1.15	-1.16	0.65	40°05'13.113"N	104°41'45.038"W	0.13	
813.00	0.270	240.920	813.00	1.28	-1.29	0.44	40°05'13.111"N	104°41'45.040"W	0.26	
913.00	0.300	256.330	913.00	1.46	-1.46	-0.02	40°05'13.110"N	104°41'45.046"W	0.08	
1013.00	0.220	260.800	1013.00	1.56	-1.56	-0.46	40°05'13.109"N	104°41'45.052"W	0.08	
1053.00	0.220	257.680	1052.99	1.59	-1.58	-0.61	40°05'13.108"N	104°41'45.054"W	0.03	Tie-Into GYRO Surveys
1164.00	0.460	260.290	1163.99	1.72	-1.71	-1.26	40°05'13.107"N	104°41'45.062"W	0.22	Begin BHI MWD+IFR Surveys
1258.00	1.050	90.460	1257.99	1.78	-1.78	-0.77	40°05'13.106"N	104°41'45.056"W	1.60	
1352.00	3.320	88.740	1351.91	1.69	-1.72	2.81	40°05'13.107"N	104°41'45.010"W	2.42	
1445.00	5.270	88.260	1444.65	1.43	-1.53	9.77	40°05'13.109"N	104°41'44.920"W	2.10	
1539.00	7.490	92.440	1538.06	1.45	-1.66	20.21	40°05'13.108"N	104°41'44.786"W	2.41	
1632.00	8.910	87.810	1630.11	1.29	-1.65	33.46	40°05'13.108"N	104°41'44.615"W	1.68	
1726.00	10.860	86.890	1722.71	0.36	-0.89	49.58	40°05'13.115"N	104°41'44.408"W	2.08	
1819.00	12.130	84.940	1813.84	-1.17	0.45	68.06	40°05'13.128"N	104°41'44.170"W	1.43	
1913.00	13.430	80.410	1905.51	-4.08	3.14	88.67	40°05'13.155"N	104°41'43.905"W	1.75	
2006.00	14.260	77.330	1995.81	-8.62	7.45	110.49	40°05'13.198"N	104°41'43.624"W	1.19	
2100.00	15.360	76.430	2086.69	-14.33	12.91	133.89	40°05'13.252"N	104°41'43.323"W	1.20	
2193.00	15.890	77.070	2176.25	-20.33	18.65	158.27	40°05'13.308"N	104°41'43.010"W	0.60	
2287.00	16.760	79.190	2266.46	-26.02	24.07	184.13	40°05'13.362"N	104°41'42.677"W	1.12	
2380.00	15.430	78.060	2355.81	-31.37	29.15	209.40	40°05'13.412"N	104°41'42.352"W	1.47	
2474.00	15.970	78.320	2446.31	-36.84	34.35	234.30	40°05'13.463"N	104°41'42.031"W	0.58	
2567.00	16.740	80.230	2535.54	-41.97	39.21	260.03	40°05'13.512"N	104°41'41.700"W	1.01	
2660.00	15.440	79.200	2624.90	-46.83	43.81	285.39	40°05'13.557"N	104°41'41.374"W	1.43	
2754.00	15.350	80.770	2715.53	-51.43	48.15	309.96	40°05'13.600"N	104°41'41.058"W	0.45	
2847.00	15.370	83.060	2805.21	-55.16	51.61	334.35	40°05'13.634"N	104°41'40.744"W	0.65	
2937.00	15.780	80.840	2891.90	-58.80	55.00	358.27	40°05'13.667"N	104°41'40.437"W	0.80	
3027.00	16.330	83.720	2978.39	-62.39	58.33	382.93	40°05'13.700"N	104°41'40.119"W	1.08	
3118.00	17.780	81.970	3065.39	-66.01	61.67	409.40	40°05'13.733"N	104°41'39.779"W	1.69	
3208.00	16.750	82.610	3151.33	-69.88	65.26	435.87	40°05'13.769"N	104°41'39.438"W	1.16	
3298.00	15.670	81.470	3237.75	-73.62	68.73	460.75	40°05'13.803"N	104°41'39.118"W	1.25	
3388.00	15.510	77.510	3324.44	-78.27	73.14	484.52	40°05'13.847"N	104°41'38.812"W	1.20	
3478.00	15.680	78.900	3411.13	-83.47	78.08	508.21	40°05'13.896"N	104°41'38.507"W	0.46	
3568.00	16.200	77.470	3497.67	-88.79	83.15	532.40	40°05'13.946"N	104°41'38.196"W	0.72	
3658.00	14.840	75.850	3584.39	-94.58	88.69	555.83	40°05'14.000"N	104°41'37.895"W	1.59	
3748.00	14.550	76.660	3671.44	-100.24	94.11	578.00	40°05'14.054"N	104°41'37.609"W	0.39	
3838.00	14.490	81.210	3758.57	-104.81	98.44	600.13	40°05'14.097"N	104°41'37.325"W	1.27	
3928.00	15.970	80.770	3845.41	-108.76	102.15	623.48	40°05'14.133"N	104°41'37.024"W	1.65	
4018.00	16.300	82.180	3931.86	-112.73	105.85	648.21	40°05'14.170"N	104°41'36.706"W	0.57	

REFERENCE WELLPATH IDENTIFICATION				
Operator	KERR-MCGEE OIL & GAS ONSHORE LP		Slot	SLOT#07 ZIEMER 35N-E5HZ (223'FNL & 351'FWL, SEC.05)
Area	COLORADO		Well	ZIEMER 35N-E5HZ
Field	WELD COUNTY (KERR MCGEE)		Wellbore	ZIEMER 35N-E5HZ AWB
Facility	SEC.05-T1N-R65W			

WELLPATH DATA (141 stations)										
MD [ft]	Inclination [°]	Azimuth [°]	TVD [ft]	Vert Sect [ft]	North [ft]	East [ft]	Latitude	Longitude	DLS [°/100ft]	Comments
4108.00	16.140	79.940	4018.28	-116.89	109.76	673.04	40°05'14.209"N	104°41'36.387"W	0.72	
4198.00	16.000	81.500	4104.77	-121.17	113.78	697.63	40°05'14.248"N	104°41'36.070"W	0.50	
4288.00	16.360	84.280	4191.20	-124.53	116.87	722.51	40°05'14.279"N	104°41'35.750"W	0.95	
4378.00	16.350	84.210	4277.56	-127.34	119.41	747.72	40°05'14.304"N	104°41'35.426"W	0.02	
4468.00	14.900	83.310	4364.23	-130.22	122.04	771.82	40°05'14.330"N	104°41'35.116"W	1.63	
4558.00	15.090	82.950	4451.17	-133.25	124.83	794.94	40°05'14.357"N	104°41'34.818"W	0.24	
4648.00	15.650	80.030	4537.95	-137.04	128.37	818.52	40°05'14.392"N	104°41'34.515"W	1.06	
4738.00	16.550	81.320	4624.42	-141.34	132.40	843.15	40°05'14.432"N	104°41'34.198"W	1.08	
4828.00	15.150	80.470	4711.00	-145.48	136.28	867.42	40°05'14.471"N	104°41'33.886"W	1.58	
4918.00	15.400	81.220	4797.82	-149.50	140.05	890.83	40°05'14.508"N	104°41'33.585"W	0.35	
5008.00	15.770	84.290	4884.51	-152.80	143.10	914.81	40°05'14.538"N	104°41'33.276"W	1.00	
5098.00	16.400	82.750	4970.98	-155.88	145.92	939.58	40°05'14.566"N	104°41'32.957"W	0.85	
5188.00	14.960	80.750	5057.63	-159.60	149.39	963.65	40°05'14.600"N	104°41'32.648"W	1.71	
5278.00	14.470	82.790	5144.68	-163.12	152.67	986.27	40°05'14.632"N	104°41'32.357"W	0.79	
5368.00	14.810	81.290	5231.76	-166.51	155.82	1008.80	40°05'14.664"N	104°41'32.067"W	0.57	
5458.00	15.450	83.640	5318.64	-169.83	158.89	1032.09	40°05'14.694"N	104°41'31.767"W	0.98	
5548.00	15.050	85.800	5405.47	-172.27	161.07	1055.65	40°05'14.716"N	104°41'31.464"W	0.77	
5638.00	15.580	86.030	5492.28	-174.21	162.76	1079.36	40°05'14.732"N	104°41'31.159"W	0.59	
5728.00	16.110	85.300	5578.86	-176.33	164.62	1103.87	40°05'14.751"N	104°41'30.844"W	0.63	
5818.00	13.270	83.180	5665.91	-178.82	166.88	1126.57	40°05'14.773"N	104°41'30.551"W	3.21	
5908.00	12.110	80.900	5753.71	-181.75	169.59	1146.15	40°05'14.800"N	104°41'30.300"W	1.40	
5998.00	11.450	79.350	5841.81	-185.08	172.74	1164.25	40°05'14.831"N	104°41'30.067"W	0.81	
6089.00	8.610	75.770	5931.41	-188.59	176.08	1179.73	40°05'14.864"N	104°41'29.867"W	3.19	
6179.00	8.010	69.820	6020.47	-192.54	179.90	1192.15	40°05'14.902"N	104°41'29.708"W	1.16	
6269.00	7.190	71.540	6109.68	-196.61	183.85	1203.38	40°05'14.941"N	104°41'29.563"W	0.95	
6358.00	5.100	62.650	6198.16	-200.28	187.43	1212.18	40°05'14.976"N	104°41'29.450"W	2.57	
6449.00	2.940	49.850	6288.94	-203.70	190.79	1217.55	40°05'15.009"N	104°41'29.381"W	2.56	
6539.00	1.450	37.870	6378.87	-206.12	193.18	1220.02	40°05'15.033"N	104°41'29.349"W	1.72	
6629.00	0.190	5.520	6468.86	-207.17	194.23	1220.73	40°05'15.043"N	104°41'29.340"W	1.44	
6706.00	0.610	198.560	6545.86	-206.91	193.97	1220.61	40°05'15.041"N	104°41'29.342"W	1.03	
6809.00	3.460	179.500	6648.78	-203.28	190.34	1220.46	40°05'15.005"N	104°41'29.343"W	2.81	
6854.00	6.390	174.810	6693.61	-199.43	186.49	1220.70	40°05'14.967"N	104°41'29.340"W	6.57	
6899.00	9.070	174.800	6738.20	-193.41	180.46	1221.25	40°05'14.907"N	104°41'29.333"W	5.96	
6944.00	11.900	174.350	6782.44	-185.27	172.31	1222.03	40°05'14.826"N	104°41'29.323"W	6.29	
6989.00	15.080	174.660	6826.19	-174.83	161.86	1223.03	40°05'14.723"N	104°41'29.310"W	7.07	
7033.00	19.090	177.020	6868.24	-161.95	148.97	1223.94	40°05'14.596"N	104°41'29.299"W	9.25	
7078.00	23.950	179.670	6910.09	-145.46	132.48	1224.37	40°05'14.433"N	104°41'29.293"W	11.01	
7123.00	28.830	180.860	6950.39	-125.47	112.48	1224.26	40°05'14.235"N	104°41'29.295"W	10.91	
7168.00	34.300	181.790	6988.72	-101.92	88.94	1223.70	40°05'14.003"N	104°41'29.302"W	12.20	
7213.00	39.700	181.050	7024.65	-74.86	61.88	1223.04	40°05'13.735"N	104°41'29.310"W	12.04	
7258.00	45.320	181.520	7057.81	-44.46	31.49	1222.36	40°05'13.435"N	104°41'29.319"W	12.51	
7303.00	51.060	180.470	7087.79	-10.94	-2.03	1221.79	40°05'13.104"N	104°41'29.327"W	12.87	
7348.00	56.840	180.990	7114.26	25.43	-38.39	1221.32	40°05'12.744"N	104°41'29.333"W	12.88	
7393.00	62.600	180.670	7136.95	64.27	-77.23	1220.76	40°05'12.360"N	104°41'29.340"W	12.81	
7438.00	67.860	180.300	7155.79	105.12	-118.08	1220.42	40°05'11.957"N	104°41'29.344"W	11.71	

REFERENCE WELLPATH IDENTIFICATION			
Operator	KERR-MCGEE OIL & GAS ONSHORE LP	Slot	SLOT#07 ZIEMER 35N-E5HZ (223'FNL & 351'FWL, SEC.05)
Area	COLORADO	Well	ZIEMER 35N-E5HZ
Field	WELD COUNTY (KERR MCGEE)	Wellbore	ZIEMER 35N-E5HZ AWB
Facility	SEC.05-T1N-R65W		

WELLPATH DATA (141 stations) † = interpolated/extrapolated station										
MD [ft]	Inclination [°]	Azimuth [°]	TVD [ft]	Vert Sect [ft]	North [ft]	East [ft]	Latitude	Longitude	DLS [°/100ft]	Comments
7483.00	71.900	179.820	7171.27	147.36	-160.32	1220.37	40°05'11.539"N	104°41'29.345"W	9.03	
7528.00	76.290	180.030	7183.60	190.63	-203.59	1220.43	40°05'11.112"N	104°41'29.344"W	9.77	
7573.00	81.260	181.480	7192.36	234.75	-247.71	1219.84	40°05'10.676"N	104°41'29.352"W	11.49	
7621.00	86.550	182.460	7197.45	282.45	-295.39	1218.20	40°05'10.205"N	104°41'29.373"W	11.21	
7667.00†	87.460	182.585	7199.85	328.36	-341.28	1216.18	40°05'09.751"N	104°41'29.399"W	2.00	7" Casing Point
7717.00	88.450	182.720	7201.64	378.29	-391.20	1213.87	40°05'09.258"N	104°41'29.429"W	2.00	
7807.00	90.150	182.320	7202.74	468.23	-481.10	1209.91	40°05'08.369"N	104°41'29.480"W	1.94	
7897.00	90.490	181.990	7202.23	558.20	-571.03	1206.53	40°05'07.481"N	104°41'29.523"W	0.53	
7987.00	91.010	182.450	7201.06	648.16	-660.96	1203.04	40°05'06.592"N	104°41'29.568"W	0.77	
8077.00	91.010	181.170	7199.47	738.12	-750.90	1200.20	40°05'05.703"N	104°41'29.605"W	1.42	
8167.00	90.520	179.920	7198.27	828.11	-840.88	1199.34	40°05'04.814"N	104°41'29.616"W	1.49	
8257.00	89.810	179.420	7198.01	918.10	-930.88	1199.86	40°05'03.925"N	104°41'29.609"W	0.96	
8347.00	90.400	180.080	7197.84	1008.09	-1020.88	1200.25	40°05'03.035"N	104°41'29.604"W	0.98	
8437.00	90.240	179.520	7197.34	1098.07	-1110.88	1200.57	40°05'02.146"N	104°41'29.600"W	0.65	
8527.00	90.460	179.430	7196.79	1188.06	-1200.87	1201.39	40°05'01.256"N	104°41'29.590"W	0.26	
8617.00	90.180	179.300	7196.29	1278.03	-1290.86	1202.39	40°05'00.367"N	104°41'29.577"W	0.34	
8707.00	88.760	179.120	7197.12	1368.00	-1380.85	1203.63	40°04'59.478"N	104°41'29.561"W	1.59	
8797.00	89.810	179.750	7198.24	1457.97	-1470.84	1204.52	40°04'58.589"N	104°41'29.550"W	1.36	
8887.00	90.520	179.800	7197.99	1547.96	-1560.83	1204.87	40°04'57.699"N	104°41'29.545"W	0.79	
8977.00	89.530	179.910	7197.95	1637.95	-1650.83	1205.10	40°04'56.810"N	104°41'29.542"W	1.11	
9067.00	91.440	180.360	7197.18	1727.94	-1740.83	1204.89	40°04'55.921"N	104°41'29.545"W	2.18	
9157.00	90.030	180.230	7196.03	1817.93	-1830.81	1204.42	40°04'55.031"N	104°41'29.551"W	1.57	
9247.00	88.950	180.470	7196.83	1907.93	-1920.81	1203.87	40°04'54.142"N	104°41'29.558"W	1.23	
9337.00	89.070	180.690	7198.39	1997.91	-2010.79	1202.96	40°04'53.253"N	104°41'29.570"W	0.28	
9427.00	90.520	181.750	7198.71	2087.90	-2100.77	1201.05	40°04'52.364"N	104°41'29.595"W	2.00	
9517.00	90.890	182.590	7197.60	2177.86	-2190.69	1197.64	40°04'51.475"N	104°41'29.639"W	1.02	
9607.00	89.590	182.030	7197.22	2267.82	-2280.62	1194.01	40°04'50.586"N	104°41'29.685"W	1.57	
9697.00	89.070	180.730	7198.28	2357.80	-2370.58	1191.84	40°04'49.697"N	104°41'29.713"W	1.56	
9787.00	89.500	179.670	7199.40	2447.79	-2460.57	1191.53	40°04'48.808"N	104°41'29.717"W	1.27	
9877.00	89.530	178.840	7200.16	2537.76	-2550.56	1192.70	40°04'47.919"N	104°41'29.702"W	0.92	
9968.00	89.590	179.080	7200.86	2628.72	-2641.54	1194.35	40°04'47.020"N	104°41'29.681"W	0.27	
10147.00	91.410	179.180	7199.30	2807.65	-2820.51	1197.07	40°04'45.251"N	104°41'29.646"W	1.02	
10237.00	90.460	179.590	7197.83	2897.61	-2910.49	1198.04	40°04'44.362"N	104°41'29.634"W	1.15	
10328.00	89.290	179.950	7198.03	2988.60	-3001.49	1198.40	40°04'43.462"N	104°41'29.629"W	1.35	
10418.00	89.750	178.760	7198.78	3078.58	-3091.48	1199.41	40°04'42.573"N	104°41'29.616"W	1.42	
10508.00	89.010	180.040	7199.76	3168.55	-3181.46	1200.36	40°04'41.684"N	104°41'29.604"W	1.64	
10598.00	89.160	180.400	7201.19	3258.53	-3271.45	1200.01	40°04'40.795"N	104°41'29.609"W	0.43	
10688.00	89.470	180.380	7202.27	3348.53	-3361.44	1199.40	40°04'39.905"N	104°41'29.617"W	0.35	
10778.00	89.900	180.510	7202.76	3438.52	-3451.44	1198.70	40°04'39.016"N	104°41'29.626"W	0.50	
10868.00	90.210	180.760	7202.68	3528.52	-3541.43	1197.70	40°04'38.127"N	104°41'29.639"W	0.44	
10958.00	90.300	180.690	7202.28	3618.52	-3631.43	1196.56	40°04'37.237"N	104°41'29.653"W	0.13	
11048.00	90.520	180.960	7201.63	3708.52	-3721.41	1195.27	40°04'36.348"N	104°41'29.670"W	0.39	
11138.00	91.010	181.130	7200.43	3798.51	-3811.39	1193.63	40°04'35.459"N	104°41'29.691"W	0.58	
11228.00	90.930	181.340	7198.91	3888.49	-3901.36	1191.69	40°04'34.570"N	104°41'29.716"W	0.25	
11318.00	90.210	180.020	7198.01	3978.48	-3991.34	1190.62	40°04'33.681"N	104°41'29.730"W	1.67	

### REFERENCE WELLPATH IDENTIFICATION

Operator	KERR-MCGEE OIL & GAS ONSHORE LP	Slot	SLOT#07 ZIEMER 35N-E5HZ (223'FNL & 351'FWL, SEC.05)
Area	COLORADO	Well	ZIEMER 35N-E5HZ
Field	WELD COUNTY (KERR MCGEE)	Wellbore	ZIEMER 35N-E5HZ AWB
Facility	SEC.05-T1N-R65W		

### WELLPATH DATA (141 stations)

MD [ft]	Inclination [°]	Azimuth [°]	TVD [ft]	Vert Sect [ft]	North [ft]	East [ft]	Latitude	Longitude	DLS [°/100ft]	Comments
11408.00	89.010	179.700	7198.62	4068.47	-4081.34	1190.84	40°04'32.791"N	104°41'29.727"W	1.38	
11498.00	89.530	179.780	7199.77	4158.45	-4171.33	1191.25	40°04'31.902"N	104°41'29.722"W	0.58	
11588.00	89.380	179.810	7200.63	4248.44	-4261.33	1191.57	40°04'31.013"N	104°41'29.718"W	0.17	
11678.00	89.350	179.830	7201.62	4338.43	-4351.32	1191.85	40°04'30.123"N	104°41'29.714"W	0.04	
11767.00	89.470	179.780	7202.54	4427.41	-4440.31	1192.15	40°04'29.244"N	104°41'29.711"W	0.15	Last BHI MWD+IFR Surveys
11821.00	89.470	179.780	7203.04	4481.41	-4494.31	1192.36	40°04'28.710"N	104°41'29.708"W	0.00	Projection to Bit

### HOLE & CASING SECTIONS - Ref Wellbore: ZIEMER 35N-E5HZ AWB Ref Wellpath: ZIEMER 35N-E5HZ AWP

String/Diameter	Start MD [ft]	End MD [ft]	Interval [ft]	Start TVD [ft]	End TVD [ft]	Start N/S [ft]	Start E/W [ft]	End N/S [ft]	End E/W [ft]
13.5in Open Hole	13.00	1125.00	1112.00	13.00	1124.99	0.00	0.00	-1.66	-0.98
9.625in Casing Surface	13.00	1115.00	1102.00	13.00	1114.99	0.00	0.00	-1.64	-0.92
8.75in Open Hole	1125.00	7677.00	6552.00	1124.99	7200.28	-1.66	-0.98	-351.26	1215.73
7in Casing Intermediate	13.00	7667.00	7654.00	13.00	7199.85	0.00	0.00	-341.28	1216.18
6.125in Open Hole	7677.00	11821.00	4144.00	7200.28	7203.04	-351.26	1215.73	-4494.31	1192.36

### TARGETS

Name	MD [ft]	TVD [ft]	North [ft]	East [ft]	Grid East [US ft]	Grid North [US ft]	Latitude	Longitude	Shape
ZIEMER PAD HARDLINES LINES (460' SETBACKS SEC.05)		4970.00	-4619.80	2521.30	3227559.17	1270954.76	40°04'27.469"N	104°41'12.613"W	polygon
ZIEMER PAD SECTION LINES (SEC.05)		4970.00	-4619.80	2521.30	3227559.17	1270954.76	40°04'27.469"N	104°41'12.613"W	polygon
ZIEMER 35N-E5HZ LANDBOX		7096.00	-21.05	-21.22	3224975.16	1275530.08	40°05'12.916"N	104°41'45.319"W	polygon
ZIEMER 35N-E5HZ BHL ON PLAT REV-2 (460'FSL & 1570'FWL, SEC.05)		7200.00	-4519.32	1173.46	3226210.53	1271043.01	40°04'28.463"N	104°41'29.951"W	point
ZIEMER 35N-E5HZ BHL ON PLAT REV-1 (460'FSL & 1570'FWL, SEC.05)		7202.00	-4519.34	1173.48	3226210.55	1271042.99	40°04'28.463"N	104°41'29.951"W	point

### WELLPATH COMPOSITION - Ref Wellbore: ZIEMER 35N-E5HZ AWB Ref Wellpath: ZIEMER 35N-E5HZ AWP

Start MD [ft]	End MD [ft]	Positional Uncertainty Model	Log Name/Comment	Wellbore
13.00	1053.00	Generic gyro - continuous (Standard)	MS ENERGY SERVICES GYRO SURVEYS <113-1053>	ZIEMER 35N-E5HZ AWB
1053.00	7621.00	NaviTrak (MAGCORR,IFR)	BHI MWD SURVEYS 8 3/4" HOLE <1164-7621>	ZIEMER 35N-E5HZ AWB
7621.00	11767.00	NaviTrak (MAGCORR,IFR)	BHI MWD SURVEYS 6 1/8" HOLE <7717-11678>	ZIEMER 35N-E5HZ AWB
11767.00	11821.00	Blind Drilling (std)	Projection to bit	ZIEMER 35N-E5HZ AWB

# Actual Wellpath Report

ZIEMER 35N-E5HZ AWP

Page 6 of 6

## REFERENCE WELLPATH IDENTIFICATION

Operator	KERR-MCGEE OIL & GAS ONSHORE LP	Slot	SLOT#07 ZIEMER 35N-E5HZ (223'FNL & 351'FWL, SEC.05)
Area	COLORADO	Well	ZIEMER 35N-E5HZ
Field	WELD COUNTY (KERR MCGEE)	Wellbore	ZIEMER 35N-E5HZ AWB
Facility	SEC.05-T1N-R65W		

## WELLPATH COMMENTS

MD [ft]	Inclination [°]	Azimuth [°]	TVD [ft]	Comment
13.00	0.000	37.280	13.00	Tie-On
113.00	0.050	37.280	113.00	Begin GYRO Surveys
1053.00	0.220	257.680	1052.99	Tie-Into GYRO Surveys
1164.00	0.460	260.290	1163.99	Begin BHI MWD+IFR Surveys
7667.00	87.460	182.585	7199.85	7" Casing Point
11767.00	89.470	179.780	7202.54	Last BHI MWD+IFR Surveys
11821.00	89.470	179.780	7203.04	Projection to Bit