

**ANADARKO PETROLEUM CORP - EBUS
DO NOT MAIL - PO BOX 4995
THE WOODLANDS, Texas**

Ziemer 35N-E5HZ

MAJORS 29

Post Job Summary

Cement Surface Casing

Date Prepared: 10/25/2013
Version: 1

Service Supervisor: LAVALLEY, LARRY

Submitted by: TRIER, DEREK

HALLIBURTON

Wellbore Geometry

Job Tubulars					MD		Shoe Joint Length ft
Type	Description	Size in	ID in	Wt lbm/ft	Top ft	Bottom ft	
Casing	9 5/8" Surface Casing	9.63	8.921	36.00	0.00	1,101.63	41.35
Open Hole Section	13 1/2" Open Hole Section		13.500		0.00	1,112.00	0.00

HALLIBURTON

Pumping Schedule

Stage /Plug #	Fluid #	Fluid Type	Fluid Name	Surface Density lbm/gal	Avg Rate bbl/min	Surface Volume	Downhole Volume
1	1	Spacer	Fresh Water Spacer	8.33	5.00	10.0 bbl	10.0 bbl
1	2	Spacer	Mud Flush	8.40	5.00	12.0 bbl	12.0 bbl
1	1	Spacer	Fresh Water Spacer	8.33	5.00	10.0 bbl	10.0 bbl
1	3	Cement Slurry	SwiftCem B2	14.20	5.00	418.0 sacks	418.0 sacks

Fluids Pumped

Stage/Plug # 1 Fluid 1: Fresh Water Spacer
DUMMY MUD / FLUSH / SPACER SBC MATERIAL

Fluid Density: 8.33 lbm/gal
Fluid Volume: 10.00 bbl
Pump Rate: 5.00 bbl/min

Stage/Plug # 1 Fluid 2: Mud Flush
DUMMY MUD / FLUSH / SPACER SBC MATERIAL
42 gal/bbl Mud Flush III
3.5 lbm/bbl Mud Flush III

Fluid Density: 8.40 lbm/gal
Fluid Volume: 12.00 bbl
Pump Rate: 5.00 bbl/min

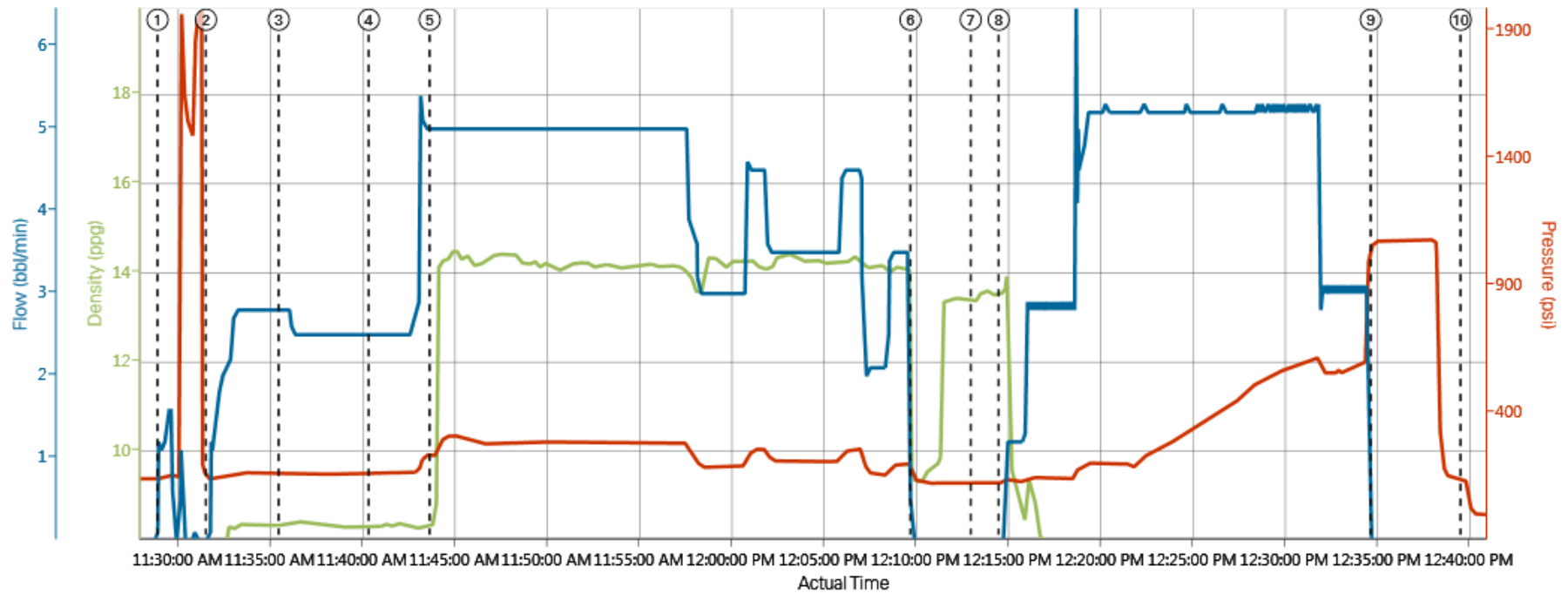
Stage/Plug # 1 Fluid 3: SwiftCem B2
SWIFTCEM (TM) SYSTEM

Fluid Weight: 14.20 lbm/gal
Slurry Yield: 1.55 ft³/sack
Total Mixing Fluid: 7.68 Gal
Surface Volume: 418.0 sacks
Sacks: 418.0 sacks

HALLIBURTON

Data Acquisition

ZIEMER 35N-E5HZ



DH Density (ppg) PS Pump Press (psi) Comb Pump Rate (bbl/min)

- ① Start Job 6.06;145;1.1 ④ Pump Spacer 1 8.31;163;2.5 ⑦ Drop Top Plug 13.34;127;0 ⑩ End Job 7.69;140;0
- ② Pump Spacer 17.45;139;0 ⑤ Pump Cement 8.38;241;5 ⑧ Pump Displacement 13.58;127;0
- ③ Pump Spacer 28.37;167;2.8 ⑥ Shutdown 9.3;147;0 ⑨ Bump Plug 7.69;1070;0

HALLIBURTON

Service Supervisor Reports

Job Log

Date/Time	Chart #	Activity Code	Pump Rate	Cum Vol	Pump	Pressure (psig)	Comments
10/20/2013 04:59		Call Out					CREW CALLED AT 06:00 AM
10/20/2013 09:30		Waiting - Arrived Early to Location - Start Time					WAIT ON RIG TO FINISH RUNNING CASING
10/20/2013 09:30		Arrive at Location from Service Center					
10/20/2013 09:40		Assessment Of Location Safety Meeting					HAZARD HUNT ON LOCATION
10/20/2013 10:40		Waiting - Arrived Early to Location - End Time					RIG TURNED OVER TO HES TO RIG UP
10/20/2013 11:15		Safety Meeting - Pre Job					
10/20/2013 11:29		Start Job					
10/20/2013 11:30		Test Lines				1934.0	FRESH WATER WITH NO ADDITIVES
10/20/2013 11:31		Pump Spacer 2	5	10		139.0	FRESH WATER WITH NO ADDITIVES
10/20/2013 11:35		Pump Spacer 2	5	12		167.0	FRESH WATER WITH MUDFLUSH III ADDED
10/20/2013 11:40		Pump Spacer 1	5	10		163.0	FRESH WATER WITH NO ADDITIVES
10/20/2013 11:43		Pump Lead Cement	5	115		241.0	418 SKS SWIFTCEM B2 MIXED @ 14.2 PPG YIELD 1.55 FT3/FT AND 7.68 GAL/SK. VERIFIED BY PRESSURIZED SCALES
10/20/2013 12:09		Shutdown					
10/20/2013 12:13		Drop Top Plug					HWE TOP PLUG NOT PRELOADED PUMPED THROUGH QUICK LATCH SWADGE
10/20/2013 12:14		Pump Displacement	5	83		630.0	FRESH WATER WITH NO ADDITIVES. CAUGHT CEMENT @ 30 BBLS AWAY AND SPACER RETURNED TO SURFACE @ 32 BBLS AWAY AND 20 BBLS CEMENT BACK TO SURFACE
10/20/2013 12:34		Bump Plug	3			1070.0	CALCULATED PRESSURE TO LAND WAS 405 AND PRESSURE TO LIFT WAS 403 PSI
10/20/2013 12:37		Other					FLOATS HELD AND GOT 1 BBLS BACK.
10/20/2013 12:39		End Job					HELD SAFETY MEETING TO RIG DOWN AND DEPART LOCATION
10/20/2013 12:45		Safety Meeting - Pre Rig-Down					

The Road to Excellence Starts with Safety

Sold To #: 300466	Ship To #: 3117327	Quote #:	Sales Order #: 900832487
Customer: ANADARKO PETROLEUM CORP - EBUS		Customer Rep: Case, Randy	
Well Name: Ziemer		Well #: 35N-E5HZ	API/UWI #: 05-123-37831
Field: WATTENBERG	City (SAP): FORT LUPTON	County/Parish: Weld	State: Colorado
Contractor: MAJORS		Rig/Platform Name/Num: majors29	
Job Purpose: Cement Surface Casing			
Well Type: Development Well		Job Type: Cement Surface Casing	
Sales Person: PLIENESS, RYAN		Srvc Supervisor: LAVALLEY, LARRY	MBU ID Emp #: 419296

Job Personnel

HES Emp Name	Exp Hrs	Emp #	HES Emp Name	Exp Hrs	Emp #	HES Emp Name	Exp Hrs	Emp #
BROOM, KENDALL L	0.0	524682	LAVALLEY, LARRY	0.0	419296	SINCLAIR, RICHARD	0.0	368195
VIATOR, JASON R.	0.0	550394	WILEY, JAMES A	0.0	440080			

Equipment

HES Unit #	Distance-1 way	HES Unit #	Distance-1 way	HES Unit #	Distance-1 way	HES Unit #	Distance-1 way
10246780C	9 mile	10988836	9 mile	11064535	9 mile	11488570C	9 mile
11518549	9 mile						

Job

Job Times

Formation Name	Formation Depth (MD) Top	Bottom	Called Out	Date	Time	Time Zone
			On Location	20 - Oct - 2013	06:00	MST
Form Type	BHST		On Location	20 - Oct - 2013	09:30	MST
Job depth MD	1112. ft	Job Depth TVD	Job Started	20 - Oct - 2013	11:30	MST
Water Depth		Wk Ht Above Floor	Job Completed	20 - Oct - 2013	12:30	MST
Perforation Depth (MD) From		To	Departed Loc	20 - Oct - 2013	13:30	MST

Well Data

Description	New / Used	Max pressure psig	Size in	ID in	Weight lbm/ft	Thread	Grade	Top MD ft	Bottom MD ft	Top TVD ft	Bottom TVD ft
13 1/2" Open Hole Section				13.5				.	1112.		
9 5/8" Surface Casing	Unknown		9.625	8.921	36.		J-55	.	1101.6		

Sales/Rental/3rd Party (HES)

Description	Qty	Qty uom	Depth	Supplier
CMT CASING EQUIPMENT BOM	1	JOB		
MILEAGE FOR CEMENTING CREW,ZI	20	MI		
ZI FUEL SURCHG-CARS/PICKUPS<1 1/2TON	20	MI		
KIT,HALL WELD-A	1	EA		
CNTRLZR, 9 5/8"x13 3/4',#500-0963-1375	7	EA		
Description	Qty	Qty uom	Depth	Supplier
PLUG,CMTG, TOP,9 5/8,HWE,8.16 MIN/9.06 MA	1	EA		
COLLAR-STOP-9 5/8"-FRICTION-HINGED	2	EA		
BASKET - CEMENT - 9-5/8 CSG X 12-1/4	1	EA		

Fluid Data

Stage/Plug #: 1

Fluid #	Stage Type	Fluid Name	Qty	Qty uom	Mixing Density lbm/gal	Yield ft ³ /sk	Mix Fluid Gal/sk	Rate bbl/min	Total Mix Fluid Gal/sk
1	Fresh Water Spacer		10.00	bbl	8.33			5.0	
2	Mud Flush		12.00	bbl	8.4			5.0	
42 gal/bbl		MUD FLUSH III - SBM (528788)							
3.5 lbm/bbl		MUD FLUSH III, 40 LB SACK (101633304)							
1	Fresh Water Spacer		10.00	bbl	8.33			5.0	
3	SwiftCem B2	SWIFTCEM (TM) SYSTEM (452990)	418.0	sacks	14.2	1.55	7.68	5.0	7.68
7.68 Gal		FRESH WATER							
Calculated Values		Pressures		Volumes					
Displacement		Shut In: Instant		Lost Returns		Cement Slurry		Pad	
Top Of Cement		5 Min		Cement Returns 20.0		Actual Displacement 83.0		Treatment	
Frac Gradient		15 Min		Spacers 32.0		Load and Breakdown		Total Job	
Rates									
Circulating			Mixing			Displacement			Avg. Job
Cement Left In Pipe		Amount	41.35 ft	Reason	Shoe Joint				
Frac Ring # 1 @	ID	Frac ring # 2 @	ID	Frac Ring # 3 @	ID	Frac Ring # 4 @	ID		
The Information Stated Herein Is Correct				Customer Representative Signature					

