



Cathedral Energy Services
1949 Pyrite Road
Casper, Wyoming, 82604

135536

2":100' - MD

11/17/2013 2:55:29 PM

Oper. Company: Anadarko

Country: USA

State / Province: Colorado

County / Parish: Weld

Started: 11/07/2013 10:00 PM

API/UWI: 05123377700100

Field: DJ Basin

Well: Pennington 28N-2HZX

Rig: Ensign 123

Ended: 11/17/2013 01:00 PM

Personnel

Day Hand: C. Van Oerle
Night Hand: R. Curtis
Comp. Emp: I. McWhorter

Location

Latitude: 40.161649
Longitude: -104.856716
Elev. GL: 4860'
Elev. DF: 4873'
Elev. KB: 13'

TD 11,763'
Gamma Ray
ROP

Hole Data

Size	From	To
8.75	1033	7665
7666	7666	11738

Casing Data

Size	From	To
9 5/8	0	1030
7	0	7632

Bit Sizes

Size	From	To
8.75	1033	7665
6.125	7666	11738

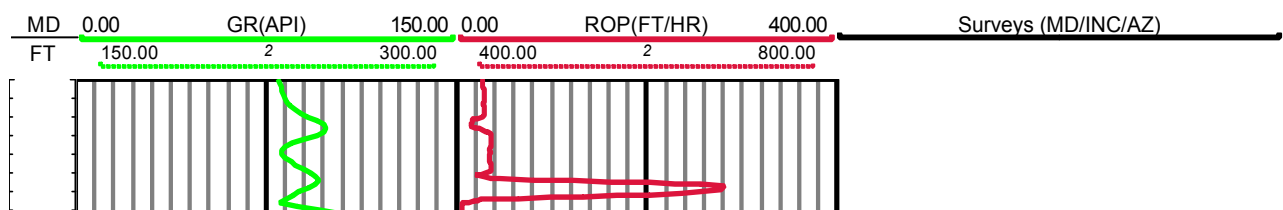
Mud Data

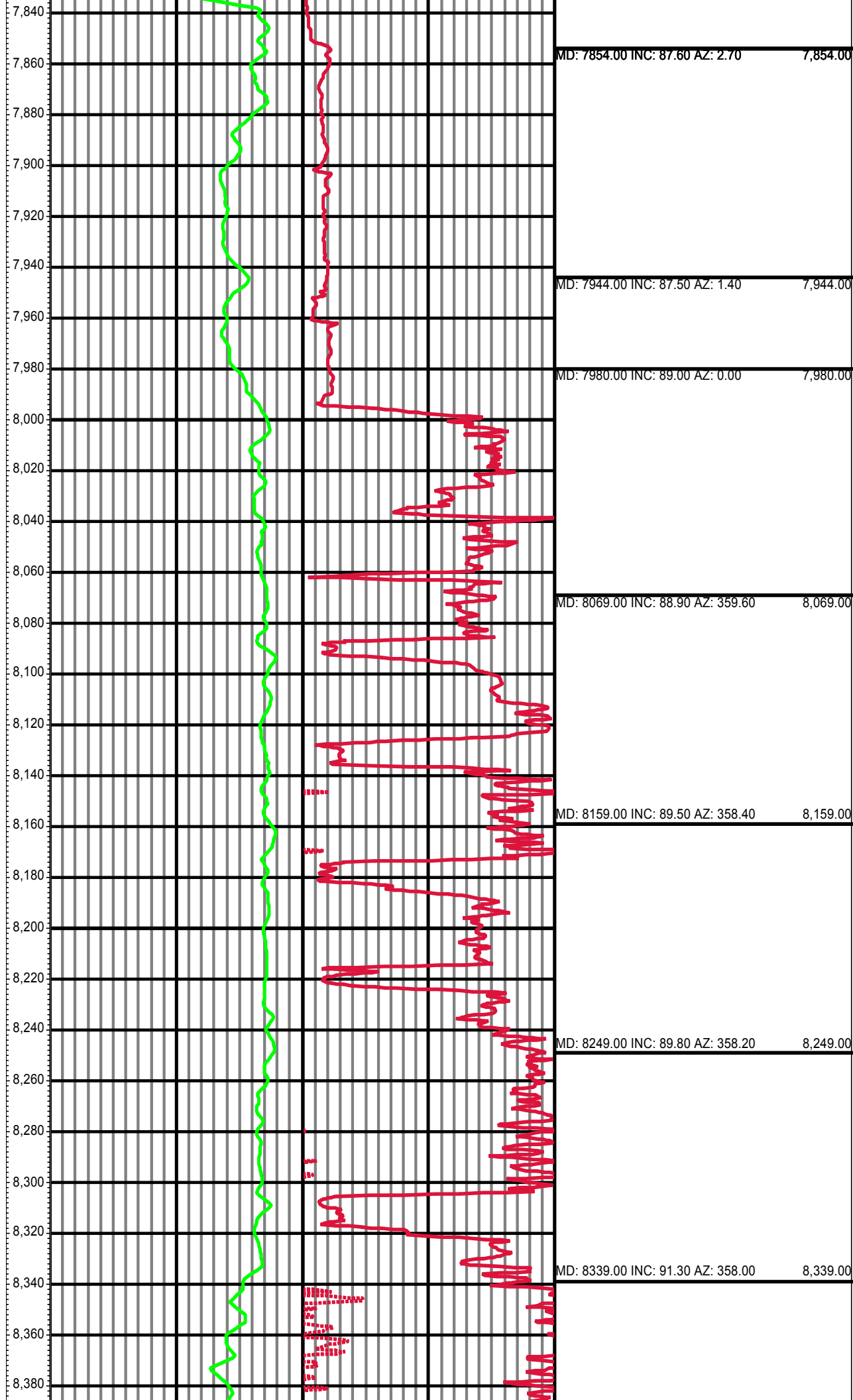
Type	Weight	Density	Viscosity	Rm	Rmf	Rmc	From	To
Water	8.3						1033	5500
LSND	9.6						5501	7665
LSND	11.0						7666	10500
LSND	10.8						10501	11738

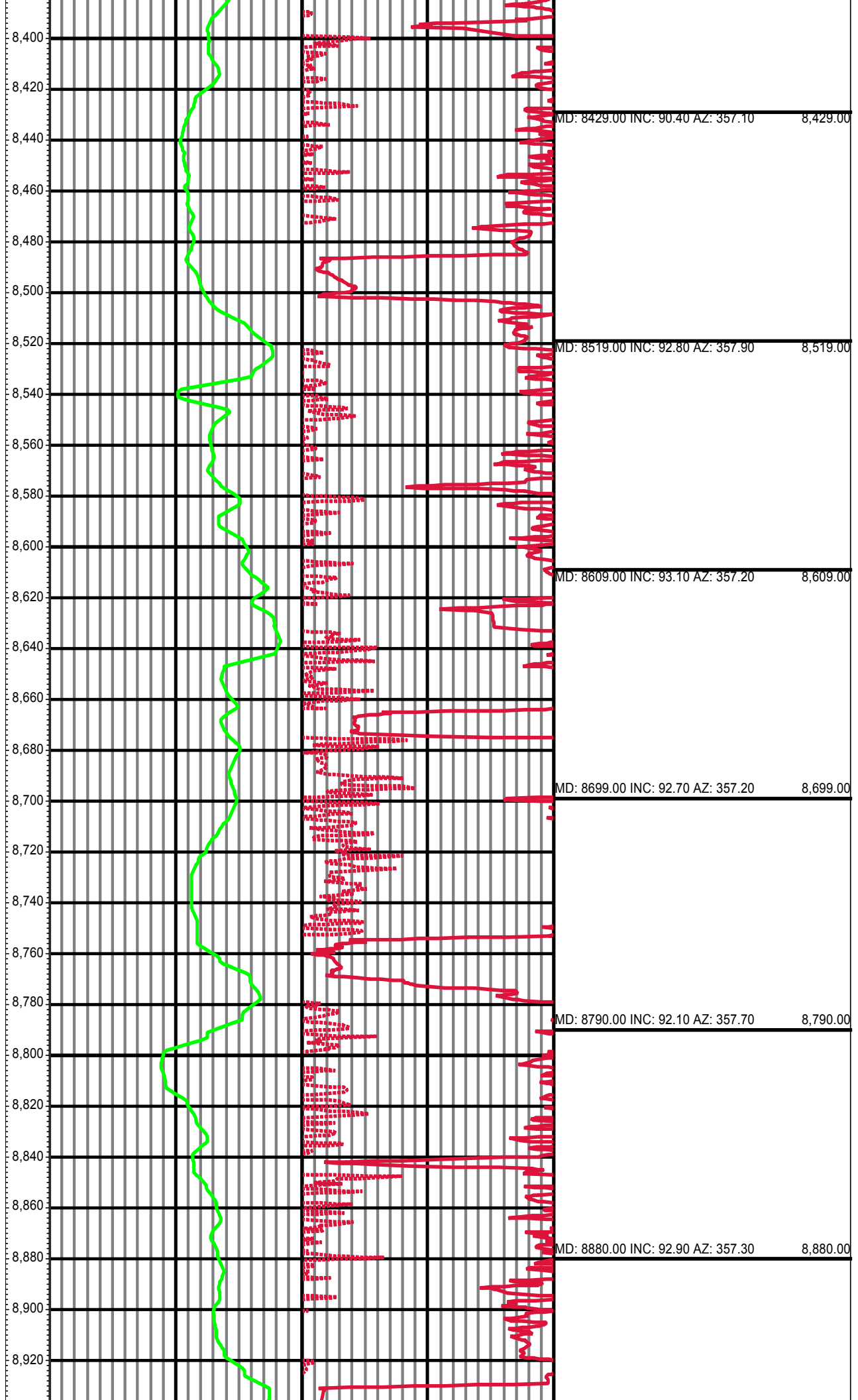
Tool Run Data

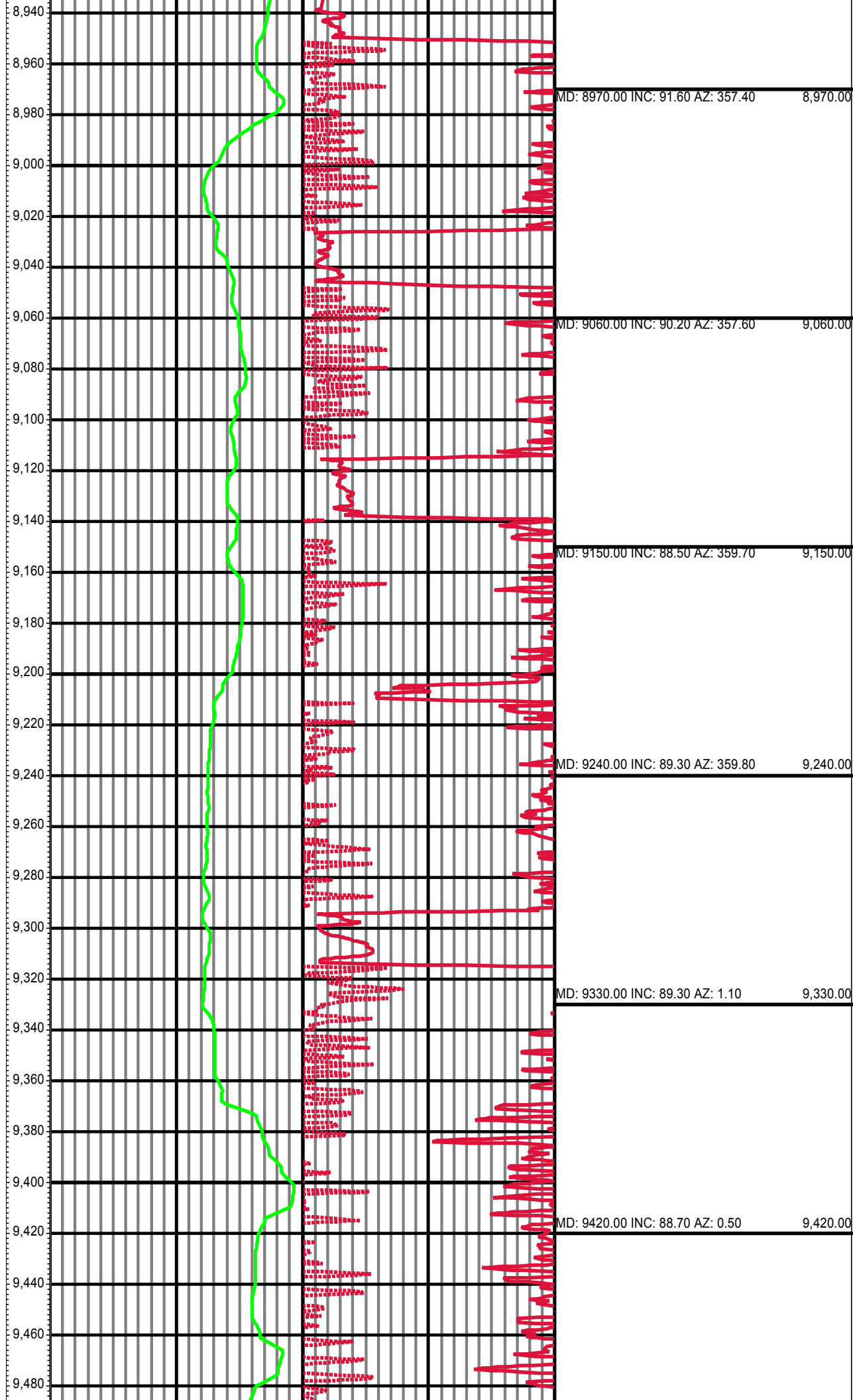
Serial Number	Gamma Offset	Resist. Offset	Start Time	Start Depth	End Time	End Depth
267	37.33	0	11/7/2013 4:00:14 PM	1033	11/10/2013 2:00:14 AM	7665
278	43.46	0	11/11/2013 8:00:08 AM	7666	11/15/2013 8:00:08 AM	8760
198	45.42	0	11/15/2013 6:05:14 PM	8761	11/17/2013 2:00:14 PM	11738

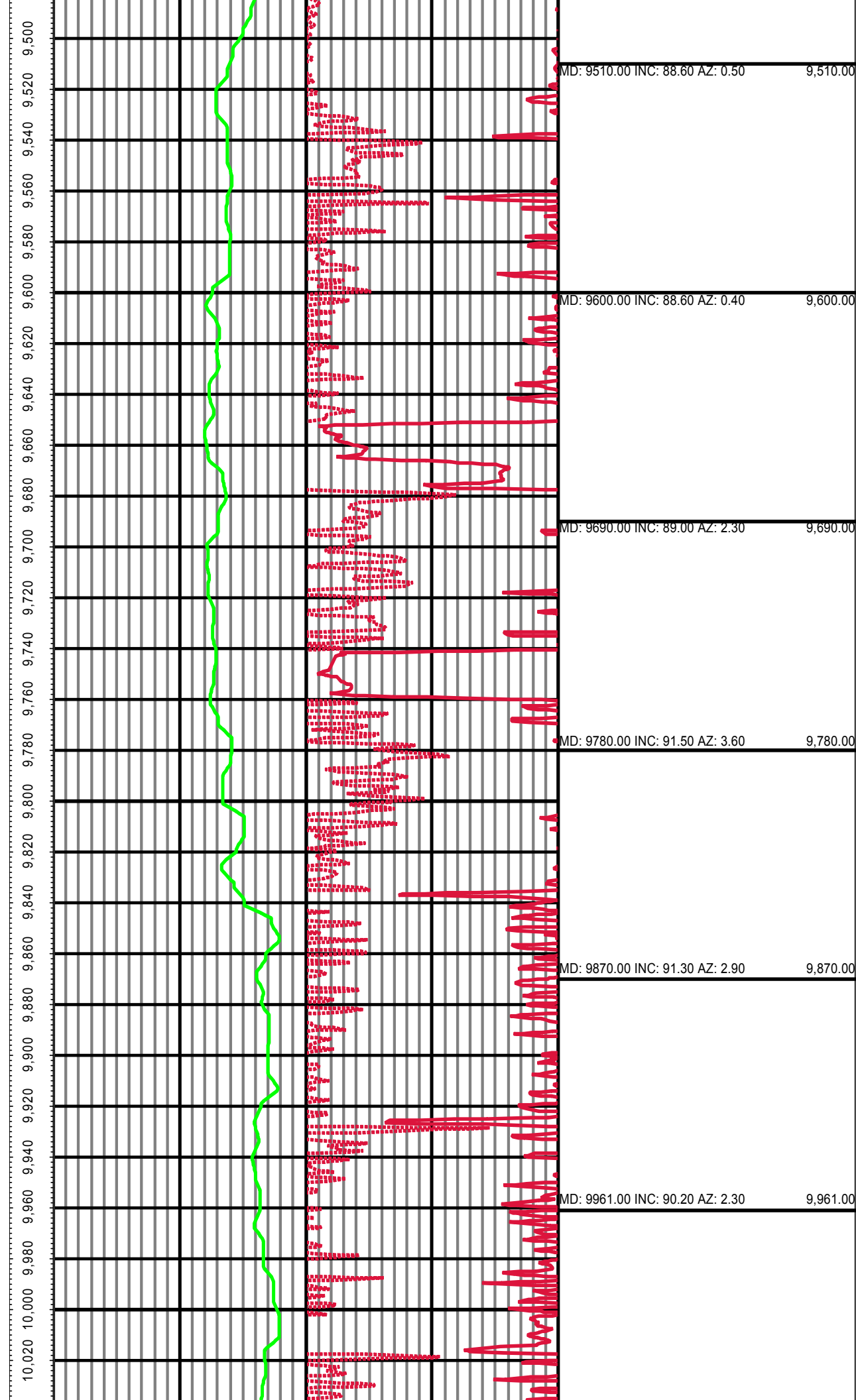
All interpretations are opinions based on inferences from electrical or other measurements and we cannot and do not guarantee the accuracy or correctness of any interpretation, and we shall not except in the case of gross or willful negligence on our part, be liable or responsible for any loss, cost damages or expenses incurred or sustained by anyone resulting from an interpretation made by any of our officers, agents, or employees.



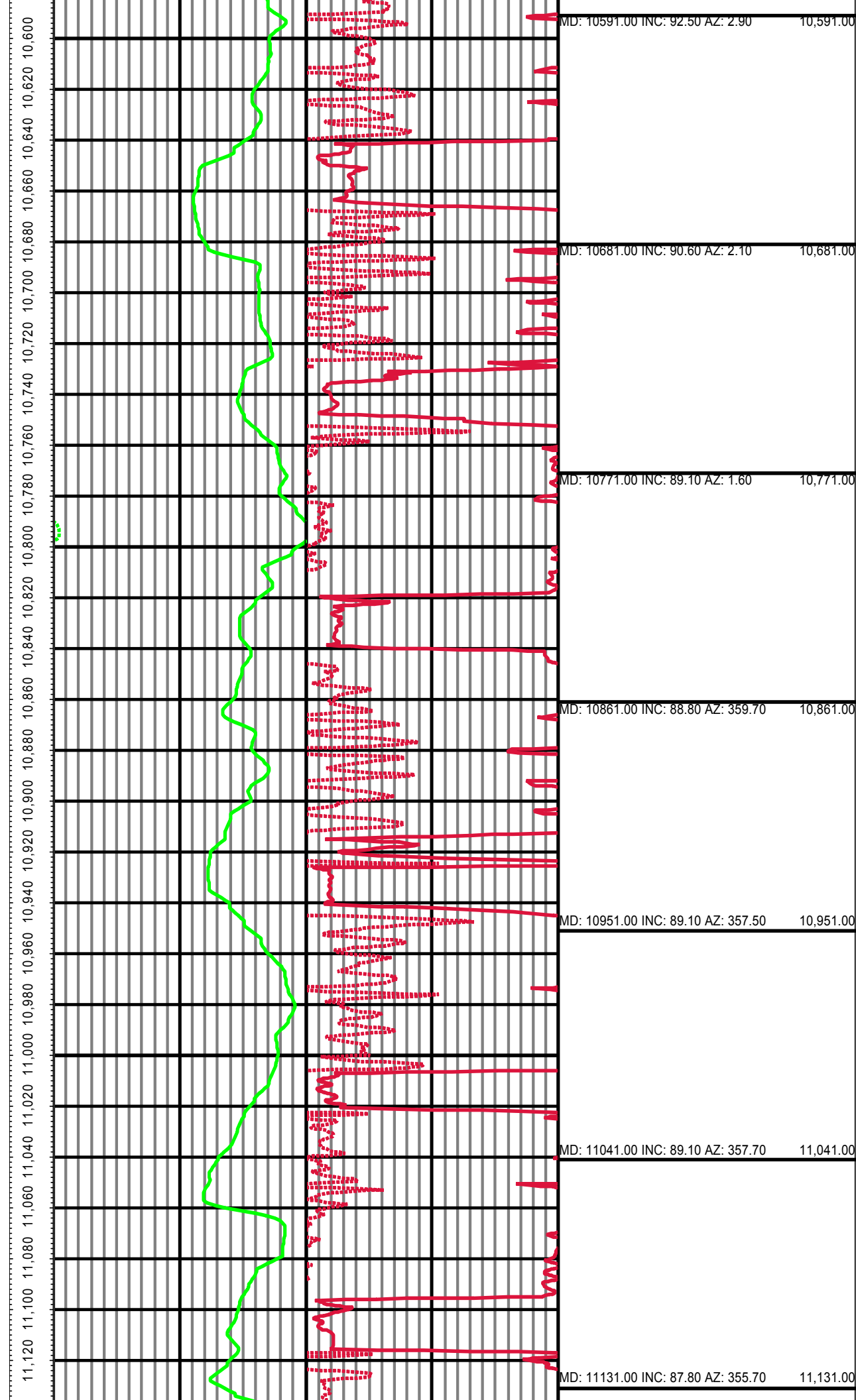




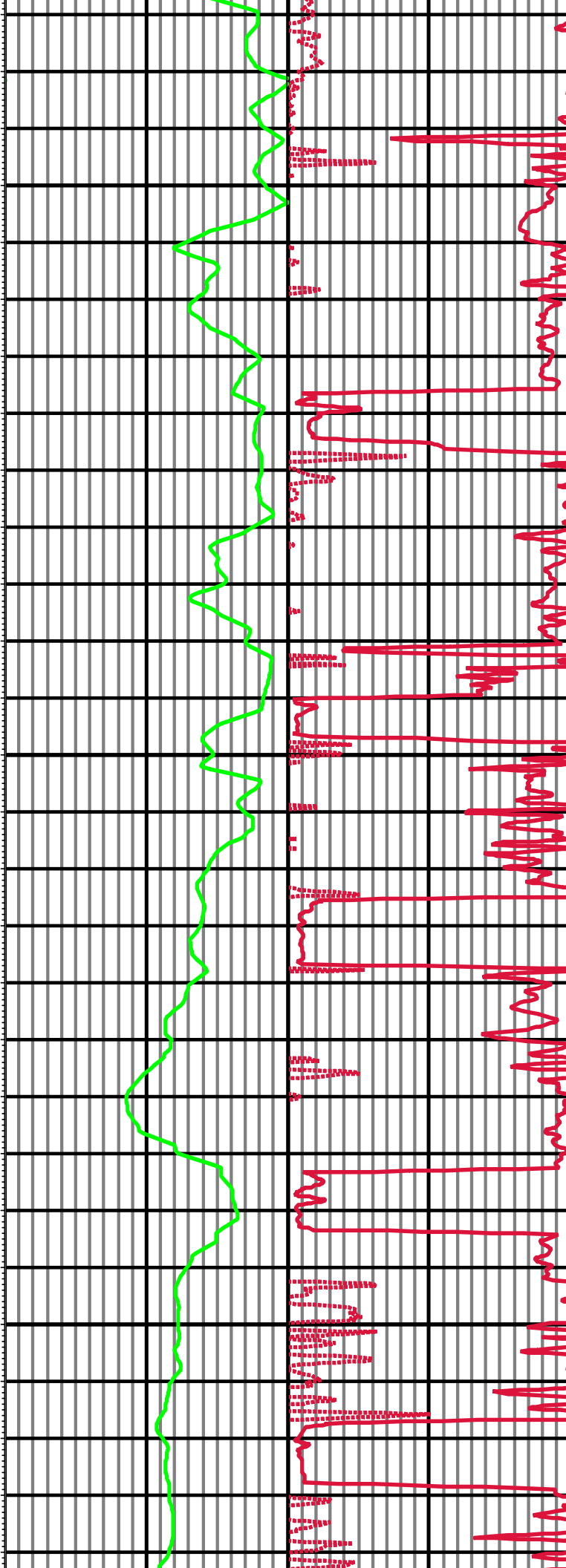




MD: 10501.00 INC: 92.20 AZ: 3.90 10,501.00



11,160 11,180 11,200 11,220 11,240 11,260 11,280 11,300 11,320 11,340 11,360 11,380 11,400 11,420 11,440 11,460 11,480 11,500 11,520 11,540 11,560 11,580 11,600 11,620 11,640 11,660



MD: 11221.00 INC: 86.90 AZ: 355.40 11,221.00

MD: 11311.00 INC: 86.90 AZ: 355.50 11,311.00

MD: 11401.00 INC: 86.90 AZ: 355.60 11,401.00

MD: 11492.00 INC: 88.70 AZ: 356.40 11,492.00

MD: 11582.00 INC: 89.30 AZ: 357.20 11,582.00

MD: 11672.00 INC: 91.40 AZ: 356.10 11,672.00

