



VIA EMAIL

Mr. Matt Lepore
Colorado Oil & Gas Conservation Commission
1120 Lincoln Street, Suite 801
Denver, CO 80203

January 15, 2014

RE: Application for Permit to Drill: Designated Spacing Unit Request
Ward Petroleum Corporation
Sharp 24-3-11HC
SHL: 250' FSL 190' FWL
BHL: $\pm 460'$ FNL $\pm 880'$ FWL
Top of Production Zone: $\pm 462'$ FSL $\pm 833'$ FWL
Sec. 24 T1S R67W
Adams County, Colorado
Surface: Fee
Mineral Lease: Fee

Dear Mr. Lepore:

Ward Petroleum Corporation (Ward) intends to permit, drill and operate the above referenced well. As defined by Colorado Oil and Gas Conservation Commission (COGCC) Rule 318A.a.(4).D., Ward proposes the following wellbore spacing unit:

W2 of Section 24 T1S R67W 6th PM, Adams County, CO – 320 acres. Please see enclosed map for details.

Ward is the sole mineral lease holder in the proposed spacing unit, therefore no mineral owner notifications were required.

Ward respectfully requests that you review the enclosed wellbore spacing unit documentation and approve the above referenced Application for Permit to Drill.

Please contact me at 303-942-0506 or at agross@upstreampm.com with any questions.

Sincerely,

Andrea J. Gross
Permit Agent for Ward Petroleum Corporation

AJG:ajg

Your Assets / Our Expertise

- Regulatory
- Storm-water Management Plans
- Project Coordination
- Permitting
- Government Relations
- EA/EIS Assistance

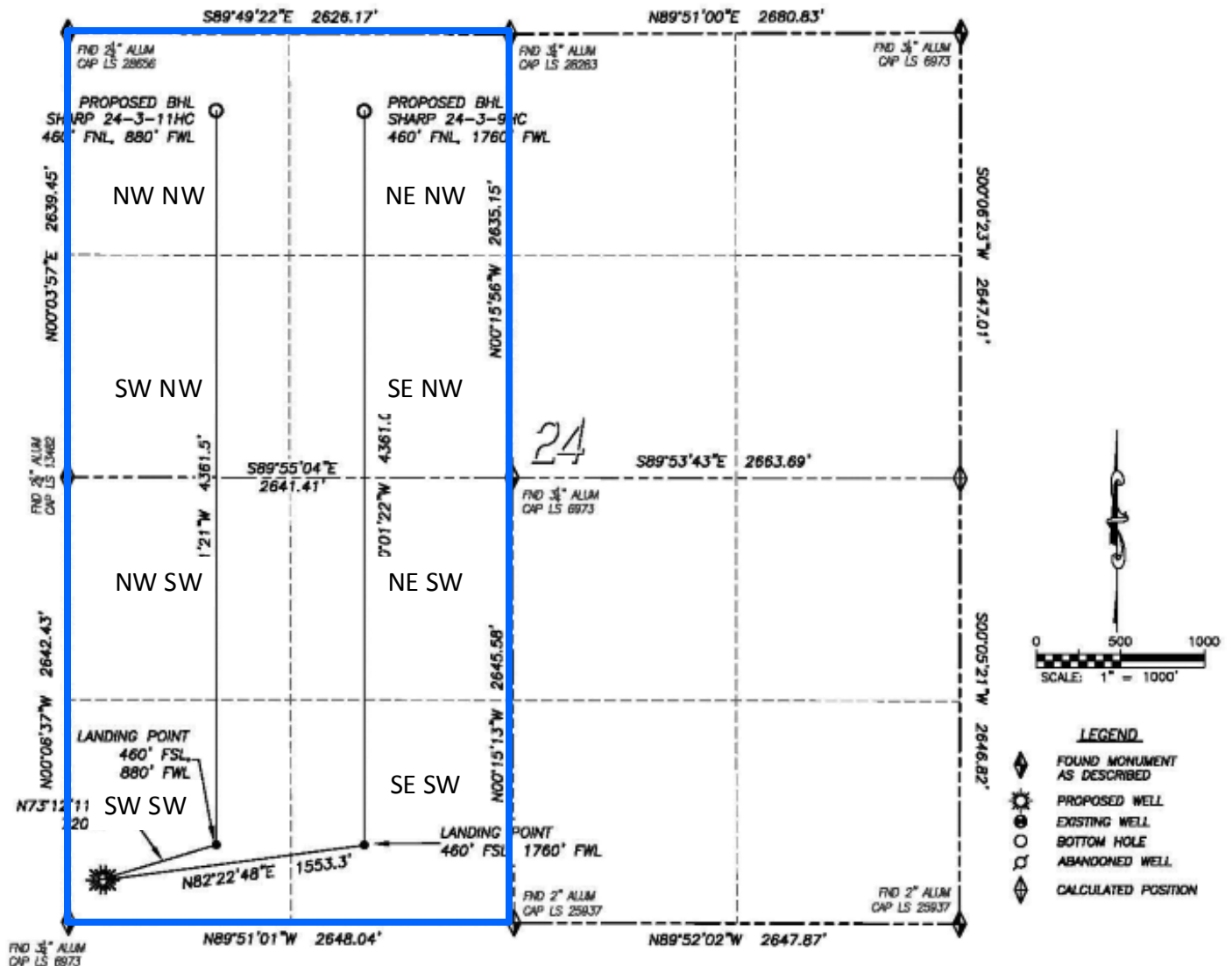
DALEY LAND SURVEYING, INC.

PARKER, CO. 80134

303 953 9841

PROPOSED 318 Ae SPACING UNIT**SHARP 24-3-11HC & SHARP 24-3-9HC**

SECTION 24, TOWNSHIP 1 SOUTH, RANGE 67 WEST OF THE 6TH PRINCIPAL MERIDIAN

**NAD 83 LATITUDE AND LONGITUDE****SHARP 24-3-11HC SURFACE HOLE:**

LATITUDE: N39.94403°
 LONGITUDE: W104.84605°
 ELEVATION: 5019'
 FOOTAGE: 250' FSL, 190' FWL
 PDOP: 1.2
 QTR/QTR: SW4/SW4

LANDING POINT:

LATITUDE: N39.94460°
 LONGITUDE: W104.84359°
 FOOTAGE: 460' FSL, 880' FWL

BOTTOM HOLE:

LATITUDE: N39.95657°
 LONGITUDE: W104.84359°
 FOOTAGE: 460' FNL, 880' FWL

NAD 83 LATITUDE AND LONGITUDE**SHARP 24-3-9HC SURFACE HOLE:**

LATITUDE: N39.94403°
 LONGITUDE: W104.84594°
 ELEVATION: 5019'
 FOOTAGE: 250' FSL, 220' FWL
 PDOP: 1.2
 QTR/QTR: SW4/SW4

LANDING POINT:

LATITUDE: N39.94460°
 LONGITUDE: W104.84045°
 FOOTAGE: 460' FSL, 1760' FWL

BOTTOM HOLE:

LATITUDE: N39.95656°
 LONGITUDE: W104.84045°
 FOOTAGE: 460' FNL, 1760' FWL

 Proposed Designated Spacing Unit