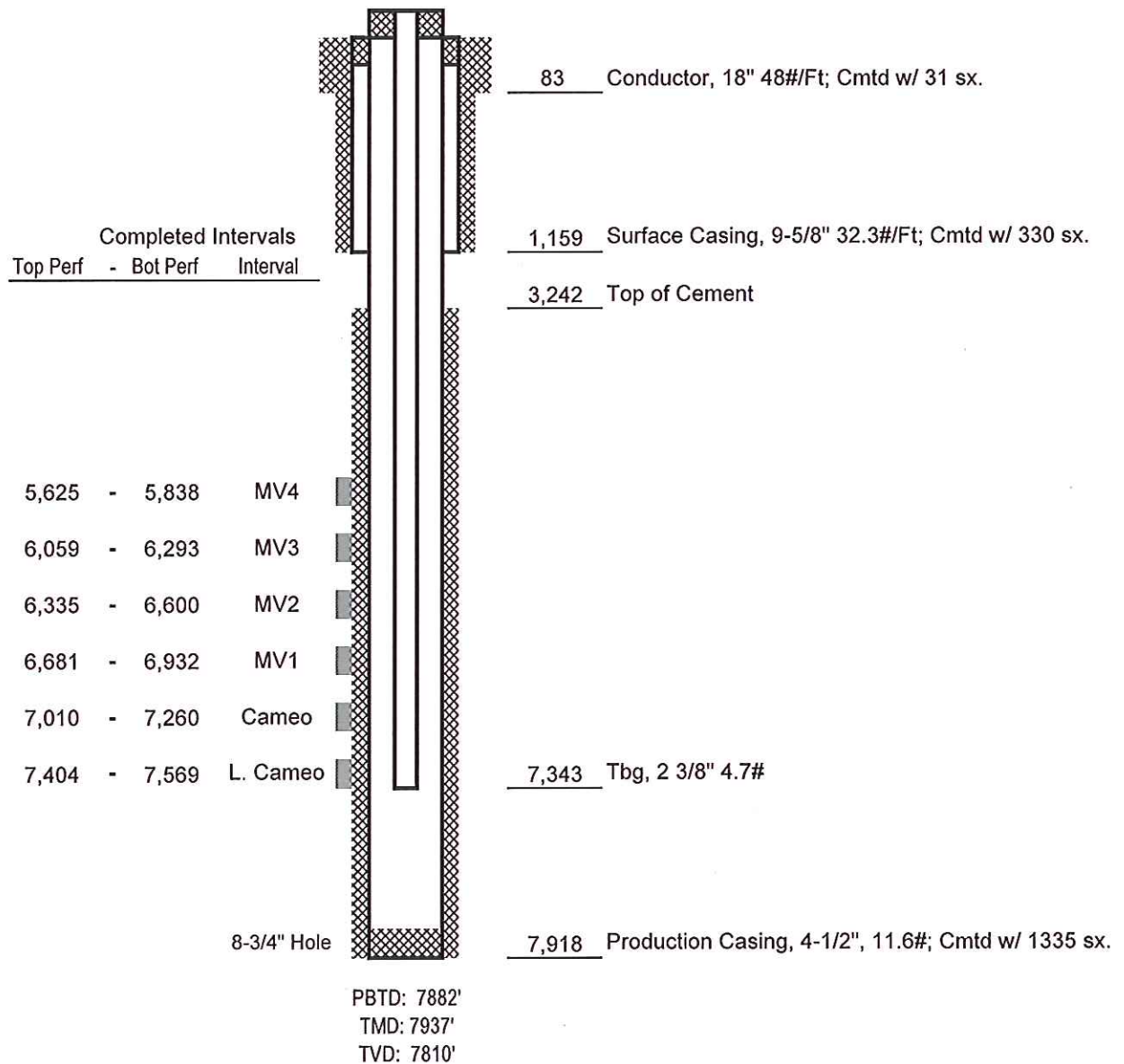


WPX Energy Rocky Mtn LLC
RWF 11-35
 API #05-045-21843-00
 1138' FNL x 1178' FWL - SHL
 293' FNL x 593' FWL - BHL
 (NWNW) Sec. 35-T6S-R94W
 Garfield County, Colorado
 Rulison Prospect

FINAL
 DATED 01-09-14



Not to Scale