

Synergy Resources

Well Name: **SRC Leffler 14-26NHZ**

Surface Location: SRC Leffler 14-26NHZ Pad Sec.26-T7N-R66W

North American Datum 1983 , US State Plane 1983 , Colorado Northern Zone

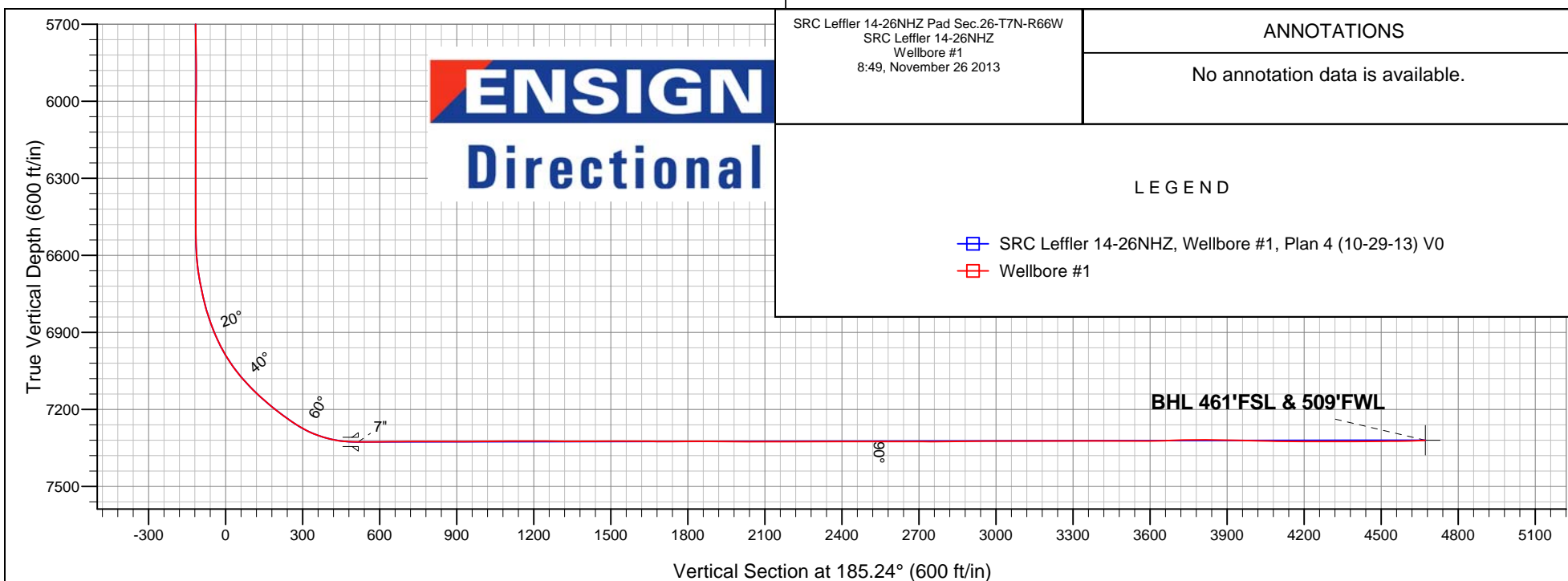
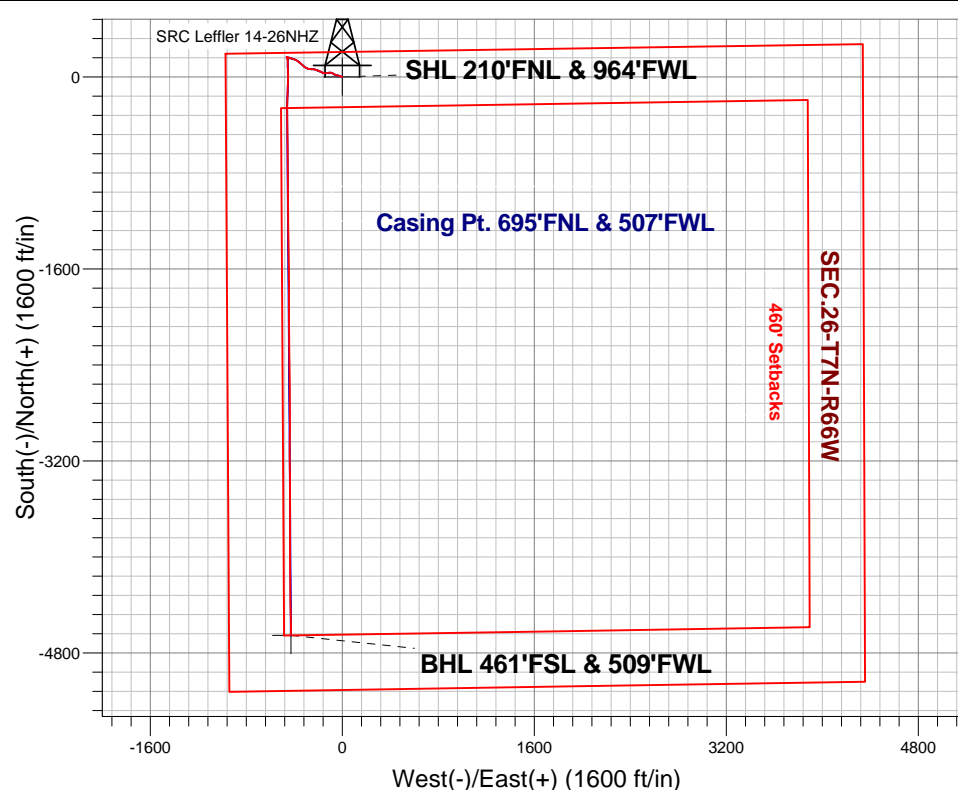
Ground Elevation: 4900.0

+N/-S	+E/-W	Northing	Easting	Latitude	Longitude	Slot
0.0	0.0	1445114.55	3208186.26	40.552825	-104.750803	

Ensign Rig #17 - RKB-12'WELL @ 4912.0ft (Ensign Rig #17 - RKB-12')

Ensign Rig #17 - RKB-12'WELL @ 4912.0ft (Ensign Rig #17 - RKB-12')

Projected Bottom Hole Location
11861' MD 7321' TVD 4652' S & 428' E of SHL
91.8 degree Incl @ 180.6 degree AZM





Synergy Resources

SEC.26-T7N-R66W

SRC Leffler 14-26NHZ Pad Sec.26-T7N-R66W

SRC Leffler 14-26NHZ

Wellbore #1

Survey: Survey #1

Standard Survey Report

05 November, 2013

Company:	Synergy Resources	Local Co-ordinate Reference:	Well SRC Leffler 14-26NHZ
Project:	SEC.26-T7N-R66W	TVD Reference:	WELL @ 4912.0ft (Ensign Rig #17 - RKB-12')
Site:	SRC Leffler 14-26NHZ Pad Sec.26-T7N-R66W	MD Reference:	WELL @ 4912.0ft (Ensign Rig #17 - RKB-12')
Well:	SRC Leffler 14-26NHZ	North Reference:	True
Wellbore:	Wellbore #1	Survey Calculation Method:	Minimum Curvature
Design:	Wellbore #1	Database:	Landmark

Project	SEC.26-T7N-R66W, Weld County, Colorado		
Map System:	US State Plane 1983	System Datum:	Mean Sea Level
Geo Datum:	North American Datum 1983		Using Well Reference Point
Map Zone:	Colorado Northern Zone		Using geodetic scale factor

Site	SRC Leffler 14-26NHZ Pad Sec.26-T7N-R66W				
Site Position:		Northing:	1,445,134.57 ft	Latitude:	40.552880
From:	Lat/Long	Easting:	3,208,186.09 ft	Longitude:	-104.750803
Position Uncertainty:	0.0 ft	Slot Radius:	"	Grid Convergence:	0.48 °

Well	SRC Leffler 14-26NHZ					
Well Position	+N/-S	0.0 ft	Northing:	1,445,114.55 ft	Latitude:	40.552825
	+E/-W	0.0 ft	Easting:	3,208,186.26 ft	Longitude:	-104.750803
Position Uncertainty		0.0 ft	Wellhead Elevation:	ft	Ground Level:	4,900.0 ft

Wellbore	Wellbore #1				
Magnetics	Model Name	Sample Date	Declination (°)	Dip Angle (°)	Field Strength (nT)
	IGRF2010	10/21/2013	8.55	67.09	52,964

Design	Wellbore #1				
Audit Notes:					
Version:	1.0	Phase:	ACTUAL	Tie On Depth:	0.0
Vertical Section:	Depth From (TVD) (ft)	+N/-S (ft)	+E/-W (ft)	Direction (°)	
	7,320.0	0.0	0.0	185.24	

Survey Program	Date	11/5/2013			
From (ft)	To (ft)	Survey (Wellbore)	Tool Name	Description	
68.0	11,861.0	Survey #1 (Wellbore #1)	MWD	MWD - Standard	

Survey										
Measured Depth (ft)	Inclination (°)	Azimuth (°)	Vertical Depth (ft)	+N/-S (ft)	+E/-W (ft)	Vertical Section (ft)	Dogleg Rate (°/100ft)	Build Rate (°/100ft)	Turn Rate (°/100ft)	
0.0	0.00	0.00	0.0	0.0	0.0	0.0	0.00	0.00	0.00	
1.0	0.01	314.60	1.0	0.0	0.0	0.0	0.59	0.59	0.00	
SHL 210'FNL & 964'FWL										
68.0	0.40	314.60	68.0	0.2	-0.2	-0.2	0.59	0.59	0.00	
195.0	0.40	11.70	195.0	0.9	-0.4	-0.9	0.30	0.00	44.96	
320.0	0.30	357.30	320.0	1.7	-0.3	-1.6	0.11	-0.08	-11.52	
445.0	1.30	269.40	445.0	2.0	-1.8	-1.8	1.06	0.80	-70.32	
531.0	1.80	275.80	531.0	2.1	-4.1	-1.7	0.61	0.58	7.44	
624.0	2.20	280.90	623.9	2.6	-7.3	-1.9	0.47	0.43	5.48	
748.0	3.10	293.20	747.8	4.4	-12.7	-3.2	0.85	0.73	9.92	
873.0	3.30	296.70	872.6	7.3	-19.0	-5.5	0.22	0.16	2.80	
998.0	4.00	282.30	997.3	9.9	-26.5	-7.4	0.92	0.56	-11.52	
1,127.0	3.70	280.00	1,126.0	11.5	-35.0	-8.3	0.26	-0.23	-1.78	

Company:	Synergy Resources	Local Co-ordinate Reference:	Well SRC Leffler 14-26NHZ
Project:	SEC.26-T7N-R66W	TVD Reference:	WELL @ 4912.0ft (Ensign Rig #17 - RKB-12')
Site:	SRC Leffler 14-26NHZ Pad Sec.26-T7N-R66W	MD Reference:	WELL @ 4912.0ft (Ensign Rig #17 - RKB-12')
Well:	SRC Leffler 14-26NHZ	North Reference:	True
Wellbore:	Wellbore #1	Survey Calculation Method:	Minimum Curvature
Design:	Wellbore #1	Database:	Landmark

Survey										
Measured Depth (ft)	Inclination (°)	Azimuth (°)	Vertical Depth (ft)	+N/-S (ft)	+E/-W (ft)	Vertical Section (ft)	Dogleg Rate (°/100ft)	Build Rate (°/100ft)	Turn Rate (°/100ft)	
1,252.0	5.00	286.00	1,250.7	13.7	-44.2	-9.6	1.10	1.04	4.80	
1,377.0	4.40	284.70	1,375.2	16.5	-54.1	-11.4	0.49	-0.48	-1.04	
1,502.0	4.50	293.00	1,499.9	19.6	-63.2	-13.7	0.52	0.08	6.64	
1,627.0	4.40	299.70	1,624.5	23.9	-71.9	-17.2	0.42	-0.08	5.36	
1,752.0	5.30	299.50	1,749.0	29.1	-81.1	-21.6	0.72	0.72	-0.16	
1,877.0	5.10	292.30	1,873.5	34.0	-91.3	-25.6	0.55	-0.16	-5.76	
2,002.0	5.40	268.00	1,998.0	36.0	-102.3	-26.5	1.78	0.24	-19.44	
2,127.0	6.20	259.20	2,122.4	34.5	-114.8	-23.9	0.96	0.64	-7.04	
2,252.0	5.50	257.70	2,246.7	31.9	-127.3	-20.2	0.57	-0.56	-1.20	
2,377.0	5.20	260.10	2,371.2	29.7	-138.7	-16.9	0.30	-0.24	1.92	
2,502.0	6.00	287.40	2,495.6	30.7	-150.5	-16.8	2.20	0.64	21.84	
2,627.0	6.10	290.50	2,619.9	35.0	-163.0	-19.9	0.27	0.08	2.48	
2,752.0	7.70	304.40	2,744.0	42.0	-176.1	-25.7	1.84	1.28	11.12	
2,877.0	7.50	287.50	2,867.9	49.2	-190.8	-31.6	1.79	-0.16	-13.52	
3,002.0	6.90	286.10	2,991.9	53.7	-205.8	-34.7	0.50	-0.48	-1.12	
3,128.0	8.20	293.50	3,116.9	59.4	-221.3	-38.9	1.29	1.03	5.87	
3,254.0	7.40	278.40	3,241.7	64.2	-237.6	-42.2	1.74	-0.63	-11.98	
3,380.0	7.70	269.30	3,366.6	65.3	-254.0	-41.8	0.98	0.24	-7.22	
3,505.0	9.50	273.00	3,490.2	65.7	-272.7	-40.5	1.51	1.44	2.96	
3,630.0	8.90	295.30	3,613.6	70.4	-291.8	-43.4	2.87	-0.48	17.84	
3,756.0	8.40	309.00	3,738.2	80.3	-307.7	-51.9	1.68	-0.40	10.87	
3,882.0	9.20	309.00	3,862.7	92.5	-322.7	-62.6	0.63	0.63	0.00	
4,008.0	10.50	310.90	3,986.9	106.3	-339.2	-74.9	1.06	1.03	1.51	
4,135.0	10.60	309.30	4,111.7	121.3	-357.0	-88.2	0.24	0.08	-1.26	
4,260.0	9.80	303.90	4,234.7	134.5	-374.7	-99.7	1.00	-0.64	-4.32	
4,385.0	9.10	293.00	4,358.1	144.3	-392.7	-107.8	1.53	-0.56	-8.72	
4,511.0	7.90	287.50	4,482.7	150.8	-410.1	-112.7	1.15	-0.95	-4.37	
4,636.0	6.60	278.40	4,606.7	154.4	-425.4	-114.9	1.38	-1.04	-7.28	
4,763.0	6.30	291.10	4,732.9	158.0	-439.1	-117.2	1.15	-0.24	10.00	
4,888.0	5.00	289.00	4,857.3	162.3	-450.7	-120.4	1.05	-1.04	-1.68	
5,014.0	3.30	291.90	4,982.9	165.4	-459.2	-122.7	1.36	-1.35	2.30	
5,140.0	0.40	180.00	5,108.9	166.3	-462.6	-123.3	2.75	-2.30	-88.81	
5,266.0	0.40	158.90	5,234.9	165.5	-462.4	-122.5	0.12	0.00	-16.75	
5,440.0	1.00	165.20	5,408.9	163.4	-461.8	-120.5	0.35	0.34	3.62	
5,516.0	1.10	167.00	5,484.8	162.1	-461.5	-119.2	0.14	0.13	2.37	
5,642.0	0.60	162.40	5,610.8	160.3	-461.0	-117.5	0.40	-0.40	-3.65	
5,768.0	0.70	186.30	5,736.8	158.9	-460.9	-116.1	0.23	0.08	18.97	
5,894.0	0.70	191.60	5,862.8	157.4	-461.1	-114.6	0.05	0.00	4.21	
6,019.0	2.30	68.90	5,987.8	157.5	-459.0	-114.9	2.19	1.28	-98.16	
6,145.0	0.50	84.50	6,113.7	158.5	-456.1	-116.1	1.45	-1.43	12.38	
6,270.0	0.10	82.40	6,238.7	158.5	-455.4	-116.3	0.32	-0.32	-1.68	
6,395.0	0.30	85.60	6,363.7	158.6	-455.0	-116.3	0.16	0.16	2.56	
6,521.0	0.40	133.20	6,489.7	158.3	-454.3	-116.1	0.24	0.08	37.78	
6,583.0	1.50	179.60	6,551.7	157.3	-454.2	-115.2	2.03	1.77	74.84	
6,615.0	2.90	183.10	6,583.7	156.1	-454.2	-114.0	4.39	4.38	10.94	
6,647.0	4.90	184.00	6,615.6	153.9	-454.3	-111.8	6.25	6.25	2.81	
6,678.0	6.90	181.50	6,646.5	150.8	-454.5	-108.6	6.50	6.45	-8.06	
6,710.0	8.80	177.70	6,678.2	146.4	-454.4	-104.3	6.15	5.94	-11.88	
6,741.0	10.70	176.80	6,708.7	141.1	-454.2	-99.1	6.15	6.13	-2.90	
6,772.0	12.40	178.70	6,739.1	134.9	-453.9	-92.9	5.62	5.48	6.13	
6,804.0	13.60	178.90	6,770.3	127.8	-453.8	-85.8	3.75	3.75	0.63	
6,835.0	15.20	181.50	6,800.3	120.0	-453.8	-78.1	5.57	5.16	8.39	
6,867.0	17.40	182.80	6,831.0	111.1	-454.2	-69.1	6.97	6.88	4.06	
6,898.0	19.50	180.00	6,860.4	101.3	-454.4	-59.3	7.35	6.77	-9.03	

Company:	Synergy Resources	Local Co-ordinate Reference:	Well SRC Leffler 14-26NHZ
Project:	SEC.26-T7N-R66W	TVD Reference:	WELL @ 4912.0ft (Ensign Rig #17 - RKB-12')
Site:	SRC Leffler 14-26NHZ Pad Sec.26-T7N-R66W	MD Reference:	WELL @ 4912.0ft (Ensign Rig #17 - RKB-12')
Well:	SRC Leffler 14-26NHZ	North Reference:	True
Wellbore:	Wellbore #1	Survey Calculation Method:	Minimum Curvature
Design:	Wellbore #1	Database:	Landmark

Survey									
Measured Depth (ft)	Inclination (°)	Azimuth (°)	Vertical Depth (ft)	+N/-S (ft)	+E/-W (ft)	Vertical Section (ft)	Dogleg Rate (°/100ft)	Build Rate (°/100ft)	Turn Rate (°/100ft)
6,930.0	21.70	177.30	6,890.3	90.0	-454.1	-48.1	7.49	6.88	-8.44
6,961.0	24.30	176.50	6,918.9	77.9	-453.5	-36.2	8.45	8.39	-2.58
6,992.0	26.70	176.60	6,946.9	64.6	-452.7	-23.0	7.74	7.74	0.32
7,024.0	29.50	177.30	6,975.1	49.5	-451.9	-8.1	8.81	8.75	2.19
7,055.0	32.20	178.00	7,001.7	33.7	-451.2	7.7	8.79	8.71	2.26
7,087.0	35.10	179.10	7,028.3	15.9	-450.8	25.3	9.26	9.06	3.44
7,118.0	38.20	180.70	7,053.2	-2.6	-450.7	43.7	10.46	10.00	5.16
7,150.0	41.10	181.00	7,077.8	-23.0	-451.0	64.1	9.08	9.06	0.94
7,182.0	43.10	181.70	7,101.6	-44.4	-451.6	85.5	6.42	6.25	2.19
7,214.0	44.80	181.90	7,124.6	-66.6	-452.3	107.7	5.33	5.31	0.63
7,245.0	47.30	181.70	7,146.1	-88.9	-453.0	129.9	8.08	8.06	-0.65
7,276.0	49.20	182.60	7,166.8	-112.0	-453.8	153.0	6.50	6.13	2.90
7,307.0	50.20	182.80	7,186.8	-135.6	-454.9	176.6	3.26	3.23	0.65
7,339.0	51.80	183.10	7,207.0	-160.5	-456.2	201.5	5.05	5.00	0.94
7,370.0	53.70	181.20	7,225.7	-185.1	-457.1	226.1	7.83	6.13	-6.13
7,401.0	55.70	181.50	7,243.6	-210.4	-457.7	251.4	6.50	6.45	0.97
7,432.0	57.60	180.80	7,260.7	-236.3	-458.3	277.2	6.41	6.13	-2.26
7,463.0	61.60	179.30	7,276.4	-263.0	-458.3	303.8	13.56	12.90	-4.84
7,494.0	66.10	178.90	7,290.0	-290.9	-457.8	331.5	14.56	14.52	-1.29
7,525.0	70.30	179.40	7,301.5	-319.6	-457.4	360.1	13.63	13.55	1.61
7,557.0	74.20	180.10	7,311.3	-350.1	-457.3	390.4	12.36	12.19	2.19
7,589.0	78.90	180.00	7,318.7	-381.2	-457.3	421.4	14.69	14.69	-0.31
7,620.0	83.30	180.00	7,323.5	-411.8	-457.3	451.9	14.19	14.19	0.00
7,635.0	85.30	179.60	7,325.0	-426.8	-457.2	466.8	13.59	13.33	-2.67
7,685.0	90.00	179.00	7,327.1	-476.7	-456.6	516.4	9.48	9.40	-1.20
7,693.0	89.90	179.10	7,327.1	-484.7	-456.5	524.4	1.77	-1.25	1.25
7,724.0	90.30	179.80	7,327.0	-515.7	-456.2	555.2	2.60	1.29	2.26
7,756.0	90.80	179.90	7,326.7	-547.7	-456.1	587.1	1.59	1.56	0.31
7,788.0	91.00	179.80	7,326.2	-579.7	-456.0	618.9	0.70	0.63	-0.31
7,820.0	90.60	179.60	7,325.8	-611.7	-455.9	650.8	1.40	-1.25	-0.63
7,851.0	90.70	179.40	7,325.4	-642.7	-455.6	681.6	0.72	0.32	-0.65
7,883.0	89.90	178.90	7,325.2	-674.7	-455.1	713.5	2.95	-2.50	-1.56
7,914.0	90.00	178.50	7,325.3	-705.7	-454.4	744.2	1.33	0.32	-1.29
7,945.0	90.20	178.40	7,325.2	-736.7	-453.6	775.0	0.72	0.65	-0.32
7,976.0	90.50	178.50	7,325.0	-767.7	-452.7	805.8	1.02	0.97	0.32
8,008.0	89.90	179.20	7,324.9	-799.6	-452.1	837.6	2.88	-1.88	2.19
8,039.0	90.00	179.40	7,324.9	-830.6	-451.7	868.4	0.72	0.32	0.65
8,071.0	89.70	180.10	7,325.0	-862.6	-451.6	900.3	2.38	-0.94	2.19
8,102.0	89.60	179.90	7,325.2	-893.6	-451.6	931.2	0.72	-0.32	-0.65
8,134.0	90.20	179.90	7,325.3	-925.6	-451.5	963.0	1.88	1.88	0.00
8,165.0	90.40	180.10	7,325.1	-956.6	-451.5	993.9	0.91	0.65	0.65
8,196.0	90.70	179.90	7,324.8	-987.6	-451.5	1,024.8	1.16	0.97	-0.65
8,228.0	90.70	179.60	7,324.4	-1,019.6	-451.4	1,056.6	0.94	0.00	-0.94
8,259.0	90.40	179.40	7,324.1	-1,050.6	-451.1	1,087.5	1.16	-0.97	-0.65
8,290.0	89.70	179.80	7,324.1	-1,081.6	-450.9	1,118.3	2.60	-2.26	1.29
8,322.0	90.20	179.80	7,324.1	-1,113.6	-450.8	1,150.2	1.56	1.56	0.00
8,353.0	90.70	179.80	7,323.9	-1,144.6	-450.7	1,181.0	1.61	1.61	0.00
8,385.0	89.50	179.60	7,323.8	-1,176.6	-450.5	1,212.9	3.80	-3.75	-0.63
8,416.0	89.30	179.10	7,324.1	-1,207.6	-450.2	1,243.7	1.74	-0.65	-1.61
8,448.0	89.30	179.10	7,324.5	-1,239.6	-449.7	1,275.5	0.00	0.00	0.00
8,479.0	89.80	179.80	7,324.8	-1,270.6	-449.4	1,306.4	2.77	1.61	2.26
8,511.0	90.00	179.20	7,324.8	-1,302.6	-449.1	1,338.2	1.98	0.63	-1.88
8,542.0	90.10	179.40	7,324.8	-1,333.6	-448.7	1,369.0	0.72	0.32	0.65
8,573.0	90.00	179.40	7,324.8	-1,364.6	-448.4	1,399.9	0.32	-0.32	0.00

Company:	Synergy Resources	Local Co-ordinate Reference:	Well SRC Leffler 14-26NHZ
Project:	SEC.26-T7N-R66W	TVD Reference:	WELL @ 4912.0ft (Ensign Rig #17 - RKB-12')
Site:	SRC Leffler 14-26NHZ Pad Sec.26-T7N-R66W	MD Reference:	WELL @ 4912.0ft (Ensign Rig #17 - RKB-12')
Well:	SRC Leffler 14-26NHZ	North Reference:	True
Wellbore:	Wellbore #1	Survey Calculation Method:	Minimum Curvature
Design:	Wellbore #1	Database:	Landmark

Survey									
Measured Depth (ft)	Inclination (°)	Azimuth (°)	Vertical Depth (ft)	+N/-S (ft)	+E/-W (ft)	Vertical Section (ft)	Dogleg Rate (°/100ft)	Build Rate (°/100ft)	Turn Rate (°/100ft)
8,605.0	90.00	178.90	7,324.8	-1,396.6	-447.9	1,431.7	1.56	0.00	-1.56
8,636.0	90.10	179.10	7,324.8	-1,427.6	-447.4	1,462.5	0.72	0.32	0.65
8,668.0	90.00	178.70	7,324.7	-1,459.6	-446.8	1,494.3	1.29	-0.31	-1.25
8,700.0	90.00	178.50	7,324.7	-1,491.6	-446.0	1,526.1	0.63	0.00	-0.63
8,731.0	90.00	178.70	7,324.7	-1,522.6	-445.2	1,556.9	0.65	0.00	0.65
8,763.0	90.00	178.90	7,324.7	-1,554.6	-444.5	1,588.7	0.63	0.00	0.63
8,794.0	90.00	179.20	7,324.7	-1,585.6	-444.0	1,619.5	0.97	0.00	0.97
8,825.0	89.90	179.40	7,324.8	-1,616.6	-443.7	1,650.3	0.72	-0.32	0.65
8,857.0	89.90	179.60	7,324.8	-1,648.6	-443.4	1,682.2	0.63	0.00	0.63
8,888.0	89.80	179.80	7,324.9	-1,679.6	-443.2	1,713.0	0.72	-0.32	0.65
8,919.0	90.20	179.90	7,324.9	-1,710.6	-443.1	1,743.9	1.33	1.29	0.32
8,951.0	90.30	179.60	7,324.7	-1,742.6	-443.0	1,775.8	0.99	0.31	-0.94
8,983.0	90.30	179.90	7,324.6	-1,774.6	-442.8	1,807.6	0.94	0.00	0.94
9,014.0	89.60	179.80	7,324.6	-1,805.6	-442.8	1,838.5	2.28	-2.26	-0.32
9,046.0	89.40	179.80	7,324.9	-1,837.6	-442.7	1,870.3	0.63	-0.63	0.00
9,077.0	89.90	180.10	7,325.1	-1,868.6	-442.6	1,901.2	1.88	1.61	0.97
9,109.0	90.00	180.60	7,325.1	-1,900.6	-442.8	1,933.1	1.59	0.31	1.56
9,141.0	89.70	180.30	7,325.2	-1,932.6	-443.1	1,965.0	1.33	-0.94	-0.94
9,172.0	89.60	180.50	7,325.4	-1,963.6	-443.3	1,995.9	0.72	-0.32	0.65
9,203.0	89.50	180.10	7,325.6	-1,994.6	-443.5	2,026.7	1.33	-0.32	-1.29
9,235.0	89.80	180.30	7,325.8	-2,026.6	-443.6	2,058.6	1.13	0.94	0.63
9,267.0	90.00	179.90	7,325.9	-2,058.6	-443.6	2,090.5	1.40	0.63	-1.25
9,298.0	90.20	179.40	7,325.8	-2,089.6	-443.4	2,121.3	1.74	0.65	-1.61
9,330.0	90.30	179.60	7,325.7	-2,121.6	-443.2	2,153.2	0.70	0.31	0.63
9,362.0	90.20	179.20	7,325.5	-2,153.6	-442.8	2,185.0	1.29	-0.31	-1.25
9,393.0	90.10	179.60	7,325.5	-2,184.6	-442.5	2,215.8	1.33	-0.32	1.29
9,424.0	90.10	179.40	7,325.4	-2,215.5	-442.2	2,246.7	0.65	0.00	-0.65
9,456.0	90.00	179.10	7,325.4	-2,247.5	-441.8	2,278.5	0.99	-0.31	-0.94
9,488.0	90.00	179.10	7,325.4	-2,279.5	-441.3	2,310.3	0.00	0.00	0.00
9,519.0	90.00	178.40	7,325.4	-2,310.5	-440.6	2,341.1	2.26	0.00	-2.26
9,550.0	89.90	178.00	7,325.4	-2,341.5	-439.7	2,371.9	1.33	-0.32	-1.29
9,582.0	90.20	178.90	7,325.4	-2,373.5	-438.8	2,403.7	2.96	0.94	2.81
9,613.0	90.10	178.70	7,325.3	-2,404.5	-438.1	2,434.5	0.72	-0.32	-0.65
9,645.0	90.30	179.40	7,325.2	-2,436.5	-437.6	2,466.3	2.28	0.63	2.19
9,676.0	90.30	179.90	7,325.0	-2,467.5	-437.4	2,497.1	1.61	0.00	1.61
9,707.0	90.10	179.20	7,324.9	-2,498.5	-437.2	2,528.0	2.35	-0.65	-2.26
9,739.0	89.70	178.50	7,325.0	-2,530.5	-436.5	2,559.8	2.52	-1.25	-2.19
9,770.0	90.20	179.80	7,325.0	-2,561.5	-436.1	2,590.6	4.49	1.61	4.19
9,802.0	90.10	179.60	7,324.9	-2,593.5	-435.9	2,622.5	0.70	-0.31	-0.63
9,833.0	90.10	179.90	7,324.9	-2,624.5	-435.8	2,653.3	0.97	0.00	0.97
9,864.0	89.80	180.10	7,324.9	-2,655.5	-435.8	2,684.2	1.16	-0.97	0.65
9,895.0	89.40	179.60	7,325.1	-2,686.5	-435.7	2,715.1	2.07	-1.29	-1.61
9,927.0	89.50	179.60	7,325.4	-2,718.5	-435.5	2,746.9	0.31	0.31	0.00
9,958.0	90.30	179.80	7,325.5	-2,749.5	-435.3	2,777.8	2.66	2.58	0.65
9,990.0	90.70	180.50	7,325.2	-2,781.5	-435.4	2,809.6	2.52	1.25	2.19
10,022.0	90.60	180.50	7,324.8	-2,813.5	-435.7	2,841.5	0.31	-0.31	0.00
10,053.0	90.10	180.60	7,324.6	-2,844.5	-436.0	2,872.4	1.64	-1.61	0.32
10,085.0	90.00	180.50	7,324.6	-2,876.5	-436.3	2,904.3	0.44	-0.31	-0.31
10,116.0	90.10	180.30	7,324.6	-2,907.5	-436.5	2,935.2	0.72	0.32	-0.65
10,147.0	90.50	180.60	7,324.4	-2,938.5	-436.7	2,966.1	1.61	1.29	0.97
10,179.0	90.50	180.30	7,324.1	-2,970.5	-437.0	2,998.0	0.94	0.00	-0.94
10,210.0	90.80	180.50	7,323.8	-3,001.5	-437.2	3,028.9	1.16	0.97	0.65
10,241.0	90.70	180.30	7,323.4	-3,032.5	-437.4	3,059.7	0.72	-0.32	-0.65
10,273.0	91.10	181.00	7,322.9	-3,064.5	-437.8	3,091.6	2.52	1.25	2.19

Company:	Synergy Resources	Local Co-ordinate Reference:	Well SRC Leffler 14-26NHZ
Project:	SEC.26-T7N-R66W	TVD Reference:	WELL @ 4912.0ft (Ensign Rig #17 - RKB-12')
Site:	SRC Leffler 14-26NHZ Pad Sec.26-T7N-R66W	MD Reference:	WELL @ 4912.0ft (Ensign Rig #17 - RKB-12')
Well:	SRC Leffler 14-26NHZ	North Reference:	True
Wellbore:	Wellbore #1	Survey Calculation Method:	Minimum Curvature
Design:	Wellbore #1	Database:	Landmark

Survey										
Measured Depth (ft)	Inclination (°)	Azimuth (°)	Vertical Depth (ft)	+N/-S (ft)	+E/-W (ft)	Vertical Section (ft)	Dogleg Rate (°/100ft)	Build Rate (°/100ft)	Turn Rate (°/100ft)	
10,304.0	90.70	180.30	7,322.4	-3,095.4	-438.1	3,122.5	2.60	-1.29	-2.26	
10,336.0	89.40	179.60	7,322.4	-3,127.4	-438.1	3,154.4	4.61	-4.06	-2.19	
10,367.0	90.00	179.90	7,322.5	-3,158.4	-438.0	3,185.2	2.16	1.94	0.97	
10,399.0	89.90	179.10	7,322.5	-3,190.4	-437.7	3,217.1	2.52	-0.31	-2.50	
10,430.0	89.90	179.40	7,322.6	-3,221.4	-437.3	3,247.9	0.97	0.00	0.97	
10,462.0	89.80	179.40	7,322.7	-3,253.4	-436.9	3,279.8	0.31	-0.31	0.00	
10,493.0	89.90	179.40	7,322.8	-3,284.4	-436.6	3,310.6	0.32	0.32	0.00	
10,525.0	90.00	179.40	7,322.8	-3,316.4	-436.3	3,342.4	0.31	0.31	0.00	
10,556.0	89.90	179.40	7,322.8	-3,347.4	-436.0	3,373.3	0.32	-0.32	0.00	
10,588.0	89.90	179.40	7,322.9	-3,379.4	-435.6	3,405.1	0.00	0.00	0.00	
10,619.0	89.50	179.60	7,323.0	-3,410.4	-435.4	3,435.9	1.44	-1.29	0.65	
10,651.0	89.30	179.20	7,323.4	-3,442.4	-435.0	3,467.8	1.40	-0.63	-1.25	
10,682.0	89.60	179.40	7,323.7	-3,473.4	-434.6	3,498.6	1.16	0.97	0.65	
10,714.0	89.80	179.60	7,323.8	-3,505.4	-434.4	3,530.4	0.88	0.63	0.63	
10,745.0	90.20	178.90	7,323.8	-3,536.4	-434.0	3,561.3	2.60	1.29	-2.26	
10,777.0	91.10	179.40	7,323.5	-3,568.4	-433.5	3,593.1	3.22	2.81	1.56	
10,809.0	91.50	179.40	7,322.8	-3,600.4	-433.1	3,624.9	1.25	1.25	0.00	
10,840.0	91.60	179.60	7,321.9	-3,631.4	-432.9	3,655.8	0.72	0.32	0.65	
10,872.0	92.20	179.90	7,320.9	-3,663.4	-432.7	3,687.6	2.10	1.88	0.94	
10,903.0	91.80	180.60	7,319.8	-3,694.4	-432.9	3,718.4	2.60	-1.29	2.26	
10,935.0	91.00	179.90	7,319.0	-3,726.3	-433.0	3,750.3	3.32	-2.50	-2.19	
10,966.0	89.90	180.80	7,318.7	-3,757.3	-433.2	3,781.2	4.58	-3.55	2.90	
10,998.0	89.40	180.60	7,318.9	-3,789.3	-433.6	3,813.1	1.68	-1.56	-0.63	
11,029.0	89.30	180.60	7,319.3	-3,820.3	-433.9	3,844.0	0.32	-0.32	0.00	
11,060.0	89.60	181.20	7,319.6	-3,851.3	-434.4	3,874.9	2.16	0.97	1.94	
11,092.0	89.10	181.20	7,320.0	-3,883.3	-435.1	3,906.8	1.56	-1.56	0.00	
11,123.0	88.70	180.60	7,320.5	-3,914.3	-435.6	3,937.7	2.33	-1.29	-1.94	
11,154.0	88.50	180.30	7,321.3	-3,945.3	-435.8	3,968.6	1.16	-0.65	-0.97	
11,186.0	88.60	180.50	7,322.1	-3,977.3	-436.0	4,000.5	0.70	0.31	0.63	
11,218.0	88.70	180.50	7,322.9	-4,009.3	-436.3	4,032.4	0.31	0.31	0.00	
11,249.0	88.70	180.10	7,323.6	-4,040.3	-436.5	4,063.2	1.29	0.00	-1.29	
11,281.0	88.80	179.40	7,324.3	-4,072.3	-436.3	4,095.1	2.21	0.31	-2.19	
11,312.0	89.40	178.90	7,324.8	-4,103.3	-435.9	4,125.9	2.52	1.94	-1.61	
11,344.0	90.10	178.70	7,324.9	-4,135.2	-435.2	4,157.7	2.28	2.19	-0.63	
11,376.0	90.20	179.10	7,324.8	-4,167.2	-434.6	4,189.5	1.29	0.31	1.25	
11,407.0	90.00	178.70	7,324.8	-4,198.2	-434.0	4,220.3	1.44	-0.65	-1.29	
11,438.0	89.60	178.90	7,324.9	-4,229.2	-433.3	4,251.1	1.44	-1.29	0.65	
11,470.0	90.00	178.70	7,325.0	-4,261.2	-432.7	4,282.9	1.40	1.25	-0.63	
11,501.0	89.80	178.70	7,325.0	-4,292.2	-432.0	4,313.7	0.65	-0.65	0.00	
11,533.0	90.00	179.10	7,325.1	-4,324.2	-431.4	4,345.5	1.40	0.63	1.25	
11,565.0	90.20	178.90	7,325.0	-4,356.2	-430.8	4,377.3	0.88	0.63	-0.63	
11,596.0	90.30	178.70	7,324.9	-4,387.2	-430.1	4,408.1	0.72	0.32	-0.65	
11,628.0	90.40	179.20	7,324.7	-4,419.2	-429.6	4,439.9	1.59	0.31	1.56	
11,659.0	90.20	178.90	7,324.5	-4,450.2	-429.0	4,470.8	1.16	-0.65	-0.97	
11,690.0	90.50	178.90	7,324.4	-4,481.2	-428.4	4,501.6	0.97	0.97	0.00	
11,721.0	90.70	179.20	7,324.0	-4,512.2	-427.9	4,532.4	1.16	0.65	0.97	
11,753.0	90.70	178.70	7,323.6	-4,544.2	-427.3	4,564.2	1.56	0.00	-1.56	
11,784.0	91.30	179.80	7,323.1	-4,575.2	-426.9	4,595.0	4.04	1.94	3.55	
11,806.0	91.80	180.60	7,322.5	-4,597.1	-427.0	4,616.9	4.29	2.27	3.64	
11,861.0	91.80	180.60	7,320.8	-4,652.1	-427.6	4,671.7	0.00	0.00	0.00	
BHL 460°FSL & 510°FWL										

Company:	Synergy Resources	Local Co-ordinate Reference:	Well SRC Leffler 14-26NHZ
Project:	SEC.26-T7N-R66W	TVD Reference:	WELL @ 4912.0ft (Ensign Rig #17 - RKB-12')
Site:	SRC Leffler 14-26NHZ Pad Sec.26-T7N-R66W	MD Reference:	WELL @ 4912.0ft (Ensign Rig #17 - RKB-12')
Well:	SRC Leffler 14-26NHZ	North Reference:	True
Wellbore:	Wellbore #1	Survey Calculation Method:	Minimum Curvature
Design:	Wellbore #1	Database:	Landmark

Checked By: _____	Approved By: _____	Date: _____
-------------------	--------------------	-------------