

LOG created using LPLOT VH Version 3.0, July 16, 2013, Copyright (C) 1999-2009 Pason Systems Corp.

OPERATOR: NOBLE ENERGY INC
WELL: ROHN STATE LD04-66HN
LOCATION: SEC 4T9N R58W
COUNTY: WELD
STATE: COLORADO
SPOT: 1787' FNL, 480' FEL
ELEVATION: 4706' GL; 4730' KB
FIELD: WILDCAT
SPUD DATE: 07/11/2013
TD DATE: 07/1/013
DATES LOGGED: 07/11/2013 - 07/12/2013
DEPTHS LOGGED: 1200' - 4931' MD
LOGGERS: LAURA KELLOGG; CONOR PESICKA
DRILLING FLUID: LSND
DRILLING RIG: H&P 273
API: 05-123-37481
LOG TYPE: VERTICAL
SCALE: 1:240 (5 inches per 100 feet)
REMARKS: WELLSITE GEOLOGICAL SERVICES
 PROVIDED BY COLUMBINE LOGGING INC.

LITHOLOGIES



Sandstone



Shaly Sandstone



Silty Shale

ENGINEERING SYMBOLS



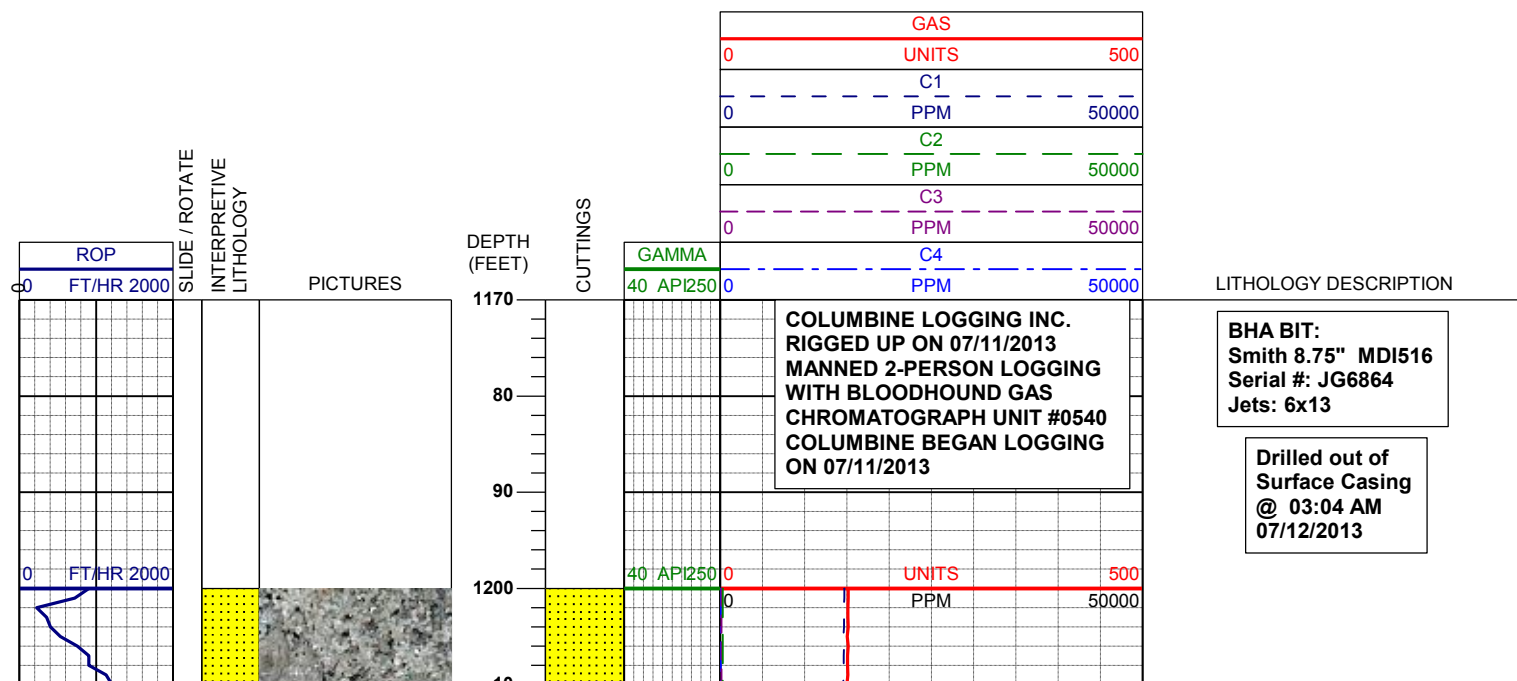
Connection

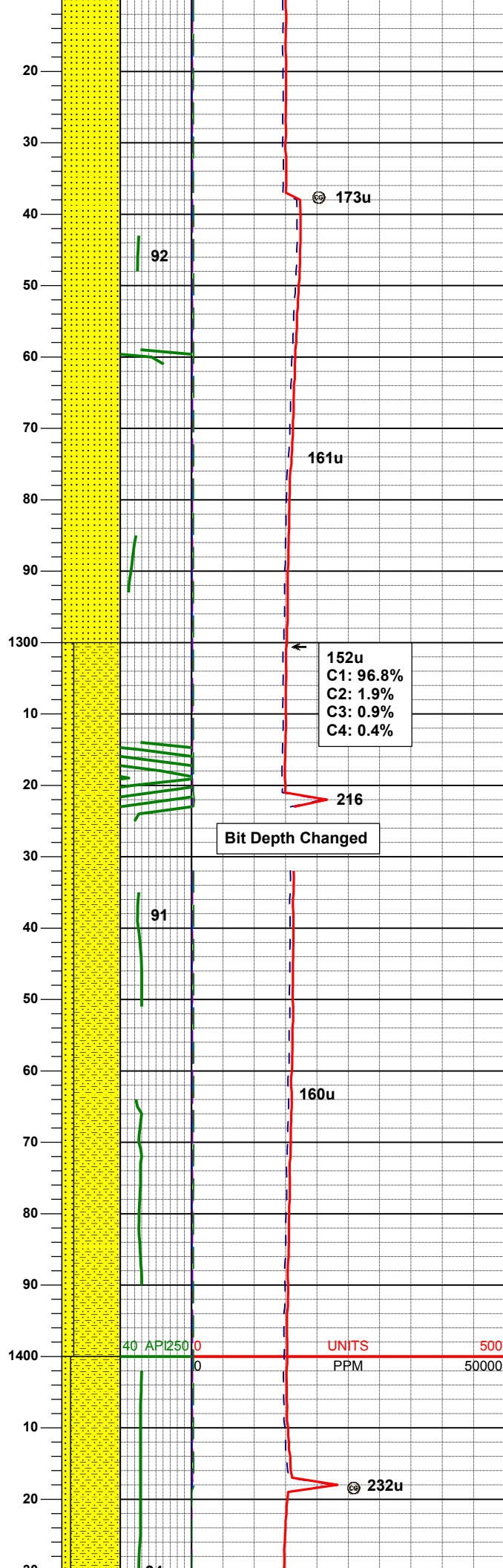
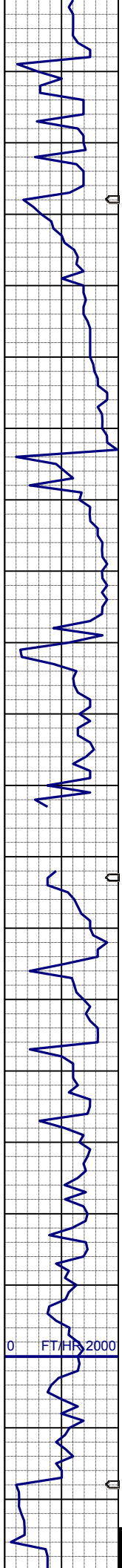


Connection Gas



Arrow



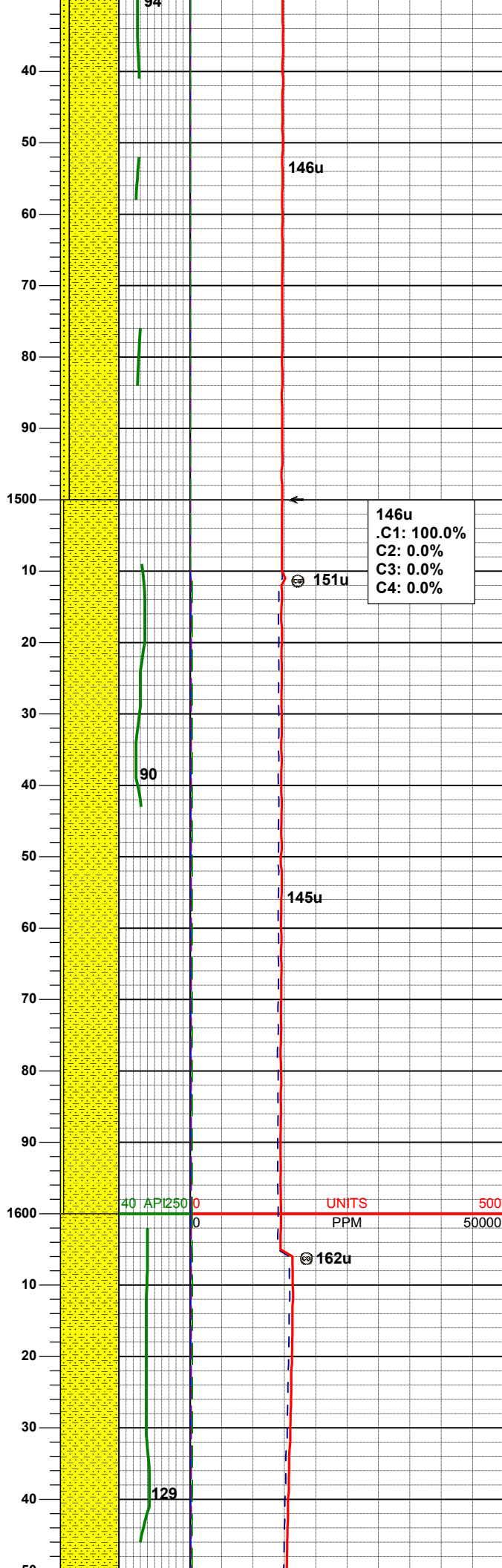
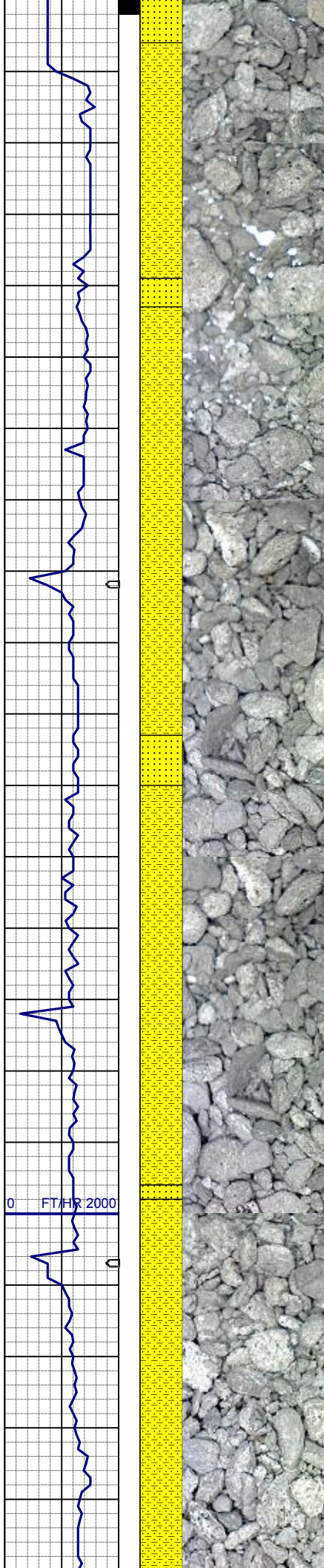


SS: wh-ltgy-trnsl, sbang, fgr, psrt, wrnnd, uncon, arg cmt, occ glau, tr lit frag

MD 1281'
INC 1.0°
AZM 354.0°
TVD 1280.93'

SHYSS: ltgy-gy, s&p ip, sbang, vfgr, p ind, psrt, wrnnd, arg cmt, tr glau
SS: wh-ltgy-trnsl, sbang-ang, fgr, psrt, wrnnd, hi por, arg cmt, occ glau, tr lit frag

WT IN 8.50/ OUT 8.50
VIS IN 26/ OUT 26



SHYSS: ltgy-gy, s&p ip, sbang, vfgr, p
ind, psrt, wrdd, arg cmt, tr glau
SS: s&p ip, wh-ltgy-trnsl, sbang-ang,
fgr, psrt, wrdd, hi por, arg cmt, occ
glau, tr lit frag

146u
.C1: 100.0%
.C2: 0.0%
.C3: 0.0%
.C4: 0.0%

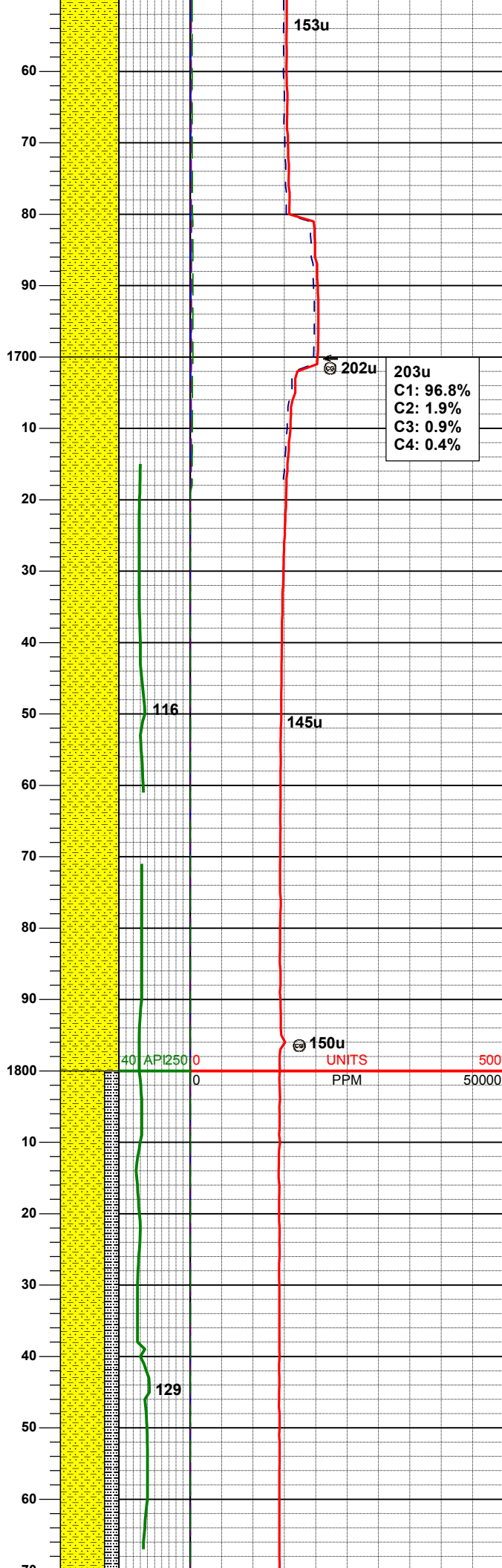
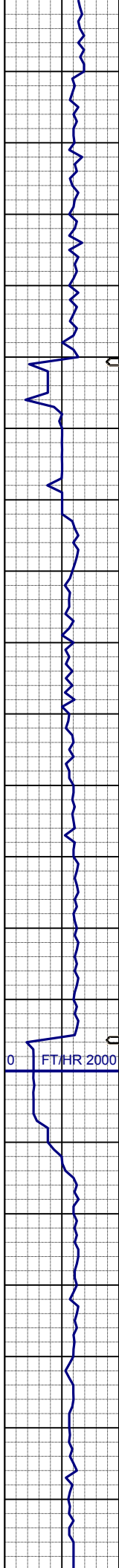
SHYSS: ltgy-gy, s&p ip, sbang, vfgr, p
ind, psrt, wrdd, arg cmt, tr glau
SS: s&p ip, wh-ltgy-trnsl, sbang-ang,
fgr, psrt, wrdd, hi por, arg cmt, tr
glau, tr lit frag

MD	1562'
INC	0.8°
AZM	170.8°
TVD	1561.92'

0 FT/HR 2000

40 API 250 0 UNITS 500
0 PPM 50000

SHYSS: ltgy-gy, s&p ip, sbang, vfgr, p
ind, psrt, wrdd, arg cmt, tr glau, tr lit



ind, psrt, wrndd, arg cmt, tr glau. tr lit frag

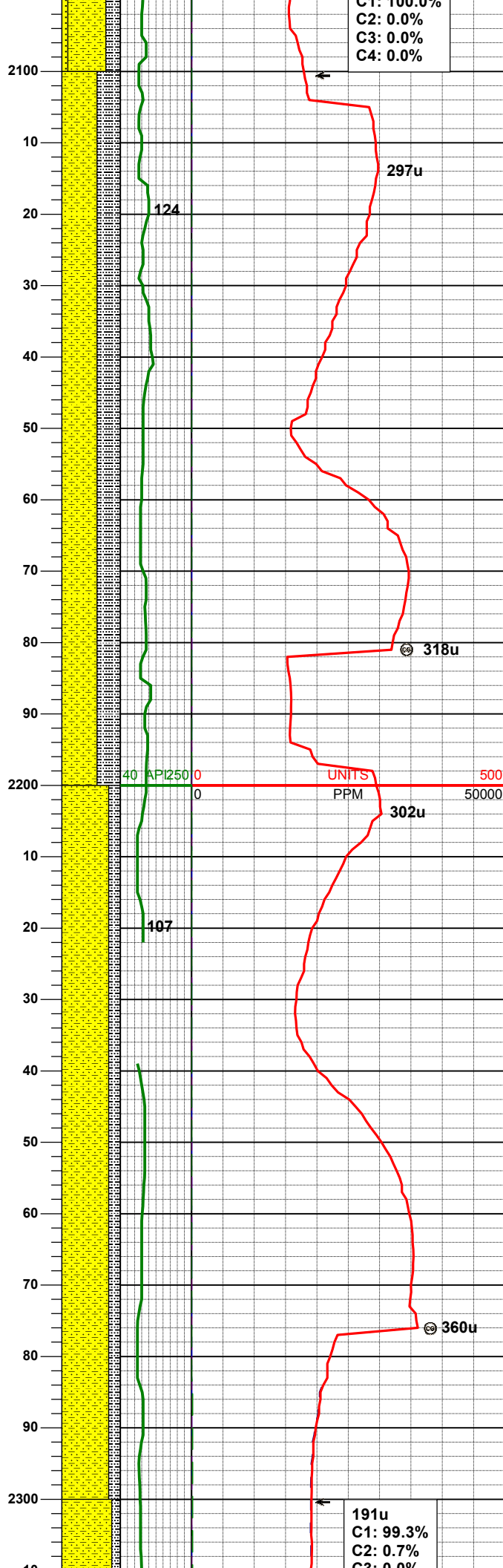
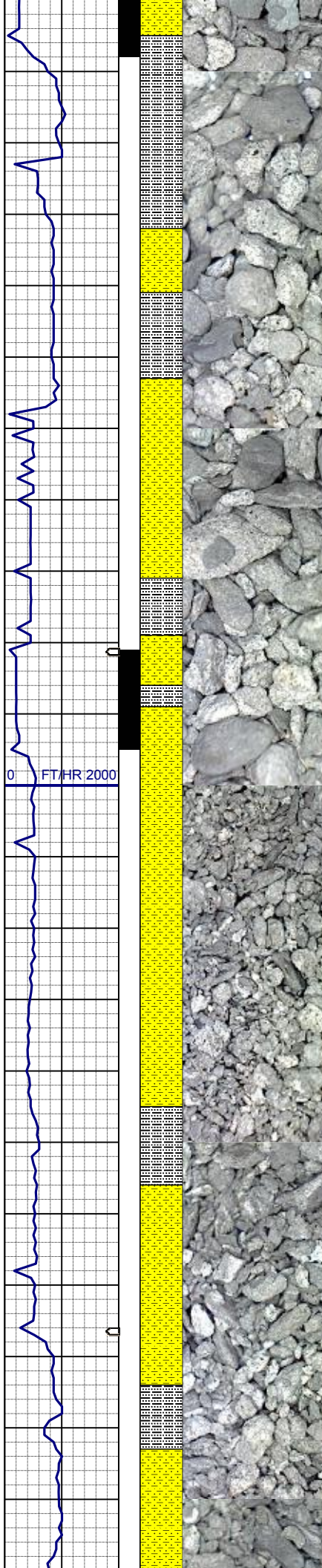
MD 1752'
INC 1.3°
AZM 148.3°
TVD 1751.89'

SHYSS: ltgy-gy, s&p ip, sbang, vfgr, p ind, psrt, wrndd, arg cmt, tr glau. tr lit frag

WT IN 8.50/ OUT 8.50
VIS IN 26/ OUT 26

MD 1847'
INC 1.3°
AZM 139.4°
TVD 1846.87'

SHYSS: ltgy-gy, s&p ip, sbang, v fri, vfgr, psrt, wrndd, abnt cly, arg cmt, sl calc
SLTYSH: ltgy-gy, sbblky-sbply, sft, gt -sdy tex, arg cmt



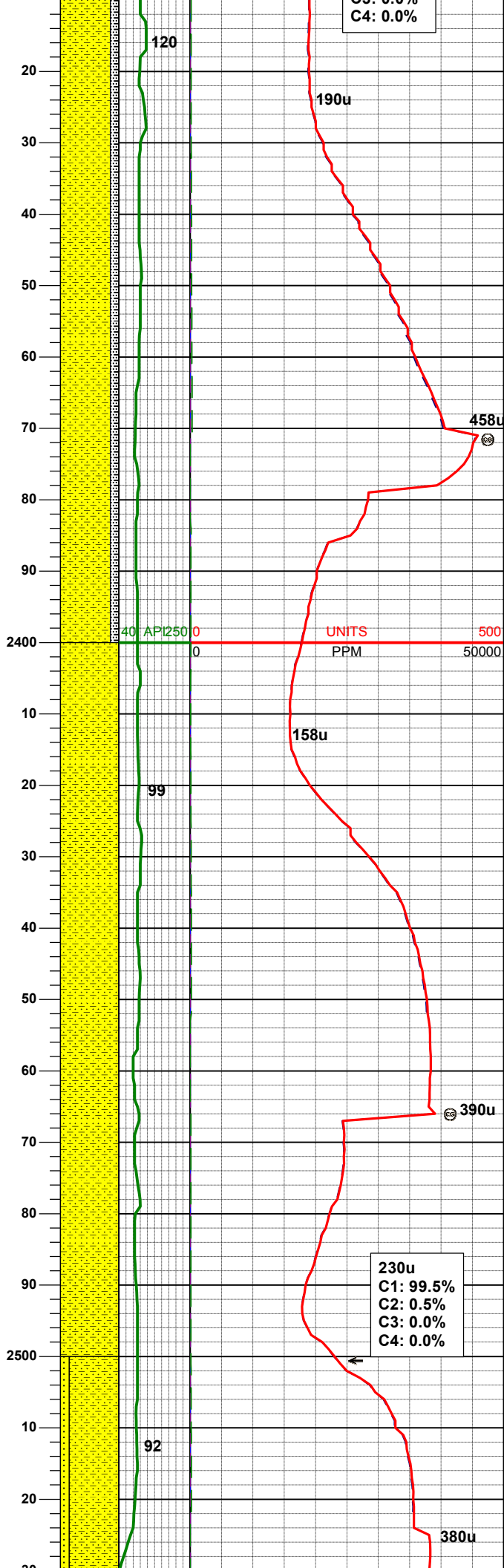
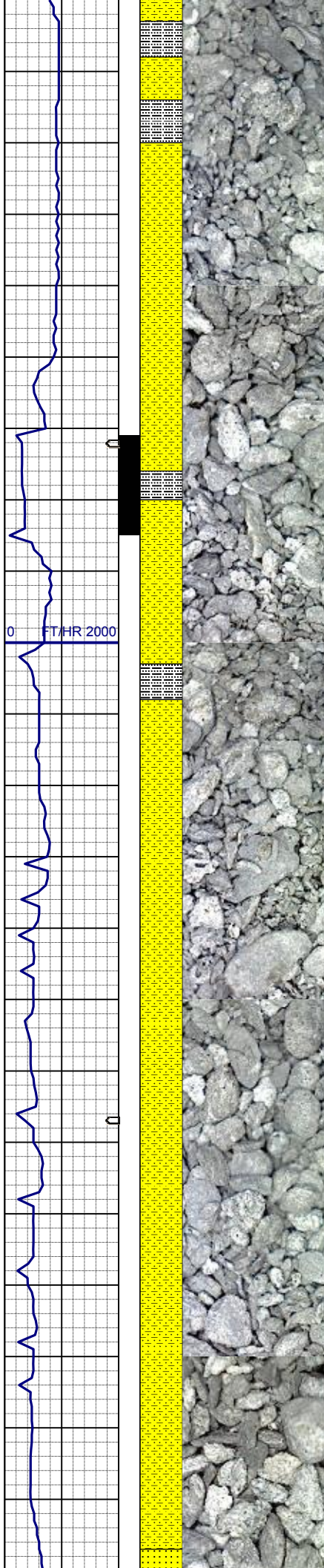
MD 2131'
INC 5.2°
AZM 133.6°
TVD 2130.33'

SHYSS: ltgy-gy, s&p ip, sbang, v fri, vfgr, psrt, wrnnd, abnt cly, arg cmt, sl calc
SLTYSH: ltgy-gy, sbblky-sbply, sft, gt-sdy tex, arg cmt

WT IN 8.40/ OUT 8.40
VIS IN 28/ OUT 28

MD 2226'
INC 6.5°
AZM 141.3°
TVD 2224.83'

SHYSS: ltgy-gy, s&p ip, sbang, v fri, vfgr, psrt, wrnnd, abnt cly, arg cmt, sl calc
SLTYSH: ltgy-gy, sbblky-sbply, sft, gt-sdy tex, arg cmt



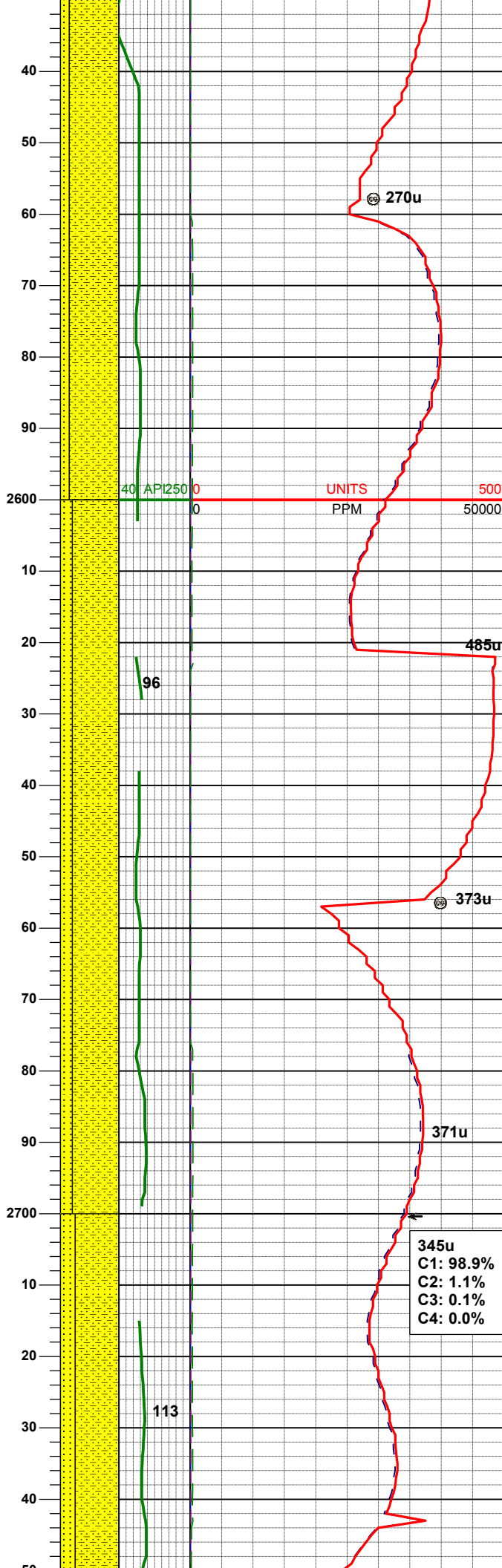
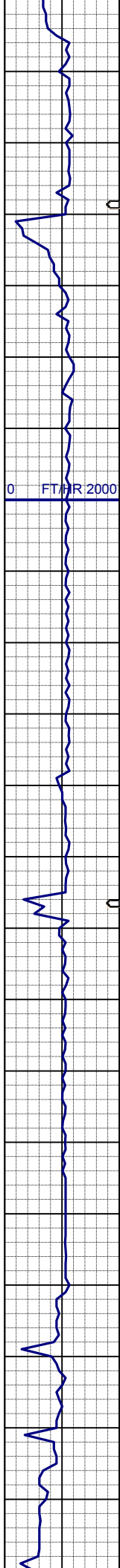
MD 2321'
INC 5.6°
AZM 143.1°
TVD 2319.30'

SHYSS: ltgy-gy, s&p ip, sbang, v fri,
vfgr, psrt, wrnnd, abnt cly, arg cmt, sl
calc
SLTYSH: ltgy-gy, sbblky-sbply, sft, gt
-sdy tex, arg cmt

MD 2416'
INC 7.0°
AZM 150.4°
TVD 2413.73'

SHYSS: ltgy-gy, s&p ip, sbang, v fri,
vfgr, psrt, wrnnd, abnt cly, arg cmt, sl
calc

MD 2510'
INC 7.5°
AZM 151.3°
TVD 2506.98'



SHYSS: ltgy-gy, s&p ip, sbang, v fri, vfgr, psrt, wrndd, abnt cly, arg cmt, sl calc
SS: ltgy-gy-trnsl, sbang-ang, fgr, psrt, wrndd, arg cmt, tr lit frag, tr glau

WT IN 8.40/ OUT 8.40
VIS IN 28/ OUT 28

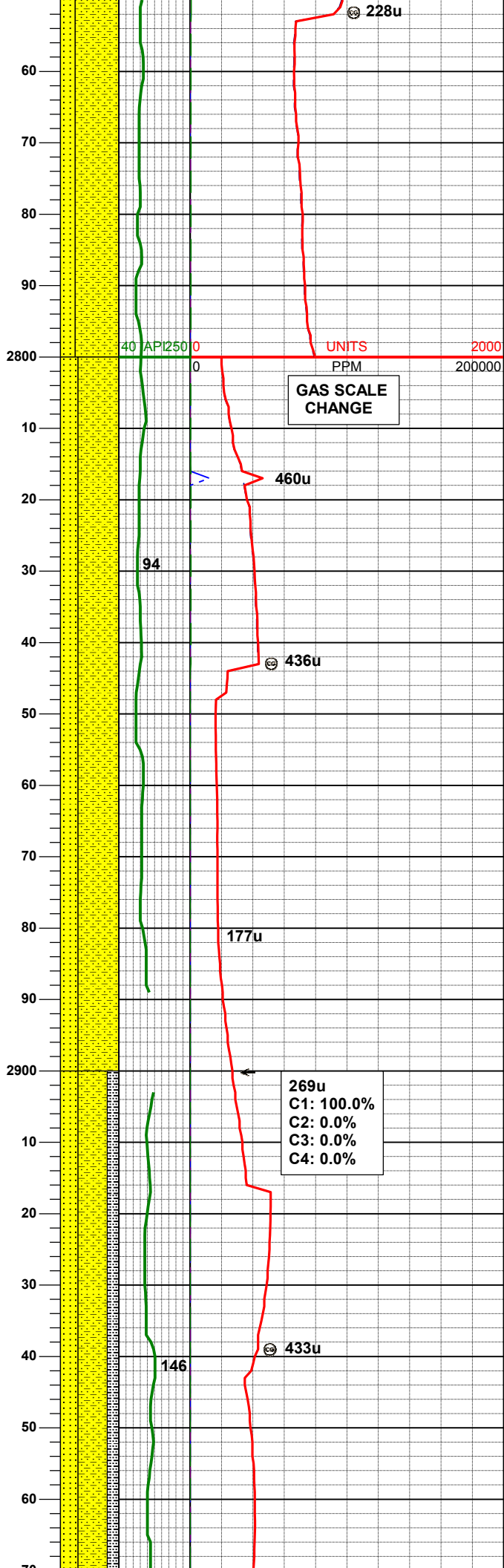
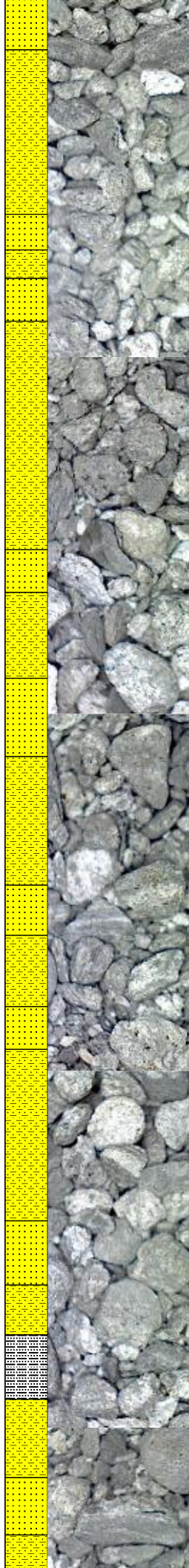
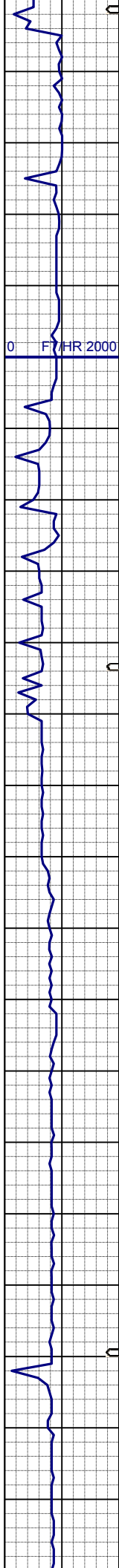
MD	2605
INC	7.6°
AZM	151.2°
TVD	2601.15'

SHYSS: ltgy-gy, s&p ip, sbang, v fri, vfgr, psrt, wrndd, abnt cly, arg cmt, sl calc
SS: ltgy-gy-trnsl, sbang-ang, fgr, psrt, wrndd, arg cmt, tr lit frag, tr glau

MD	2700'
INC	7.3°
AZM	149.6°
TVD	2695.35'

345u
C1: 98.9%
C2: 1.1%
C3: 0.1%
C4: 0.0%

SHYSS: ltgy-gy, s&p ip, sbang, v fri, vfgr, psrt, wrndd, abnt cly, arg cmt, sl calc



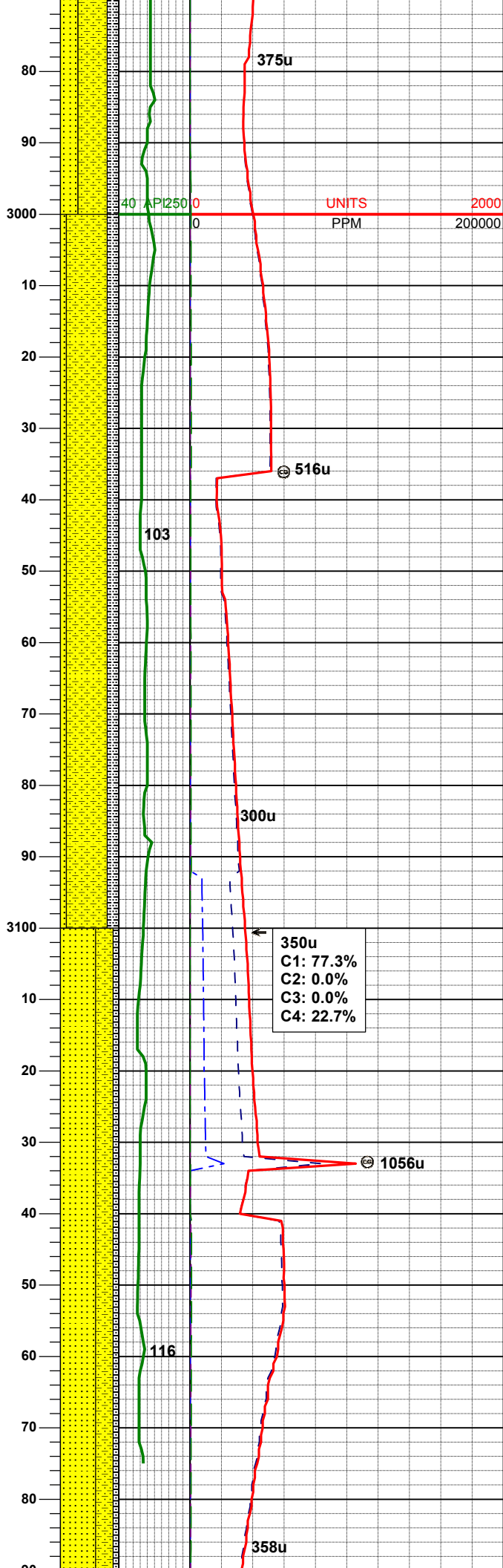
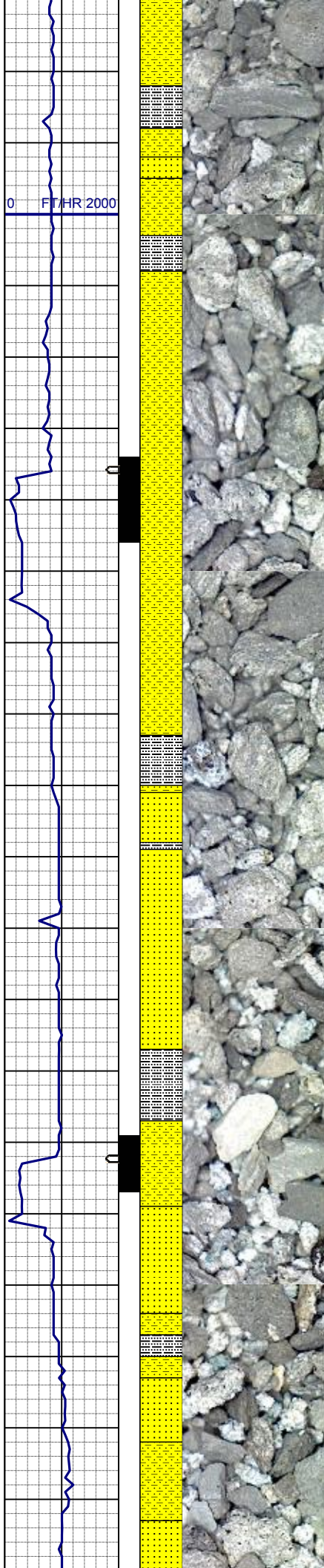
SS: ltgy-gy-trnsl, sbang-ang, fgr, psrt, wrnnd, arg cmt, tr lit frag, tr glau

MD	2795'
INC	6.2°
AZM	148.2°
TVD	2789.69'

SHYSS: ltgy-gy, s&p ip, sbang, v fri, vfgr, psrt, wrnnd, abnt cly, arg cmt, sl calc
SS: ltgy-gy-trnsl, sbang-ang, fgr, psrt, wrnnd, arg cmt, tr lit frag, occ glau

MD	2890'
INC	6.0°
AZM	144.6°
TVD	2884.15'

SHYSS: ltgy-gy, s&p ip, sbang, v fri, vfgr, psrt, wrnnd, abnt cly, arg cmt, sl calc
SS: ltgy-gy-trnsl, sbang-ang, fgr, psrt, wrnnd, arg cmt, tr lit frag, occ glau
SLTYSH: ltgy-gy, sbblky-sbply, sft, gt-sdy tex, arg cmt



MD 2984'
INC 5.2°
AZM 139.0°
TVD 2977.71'

WT IN 8.40/ OUT 8.40
VIS IN 28/ OUT 28

SHYSS: ltgy-gy, s&p ip, sbang, v fri,
vfgr, psrt, wrndd, abnt cly, arg cmt, sl
calc
SLTYSH: ltgy-gy, sbblky-sbply, sft, gt
-sdy tex, arg cmt
SS: ltgy-gy-trnsl, sbang-ang, fgr, psrt,
wrndd, arg cmt, tr lit frag, occ glau

MD 3079'
INC 6.2°
AZM 147.3°
TVD 3072.24'

SS: ltgy-gy-trnsl, sbang-ang, fgr, psrt,
wrndd, arg cmt, tr lit frag, abnt glau
SHYSS: ltgy-gy, s&p ip, sbang, v fri,
vfgr, psrt, wrndd, abnt cly, arg cmt, sl
calc
SLTYSH: ltgy-gy, sbblky-sbply, sft, gt
-sdy tex, arg cmt

MD 3174'
INC 7.7°
AZM 147.3°
TVD 3166.54'

0 FT/HR 2000

0 FT/HR 2000

3200 40 API 250 0 UNITS 2000
PPM 2000003300 40 API 250 0 UNITS 2000
PPM 2000003400 40 API 250 0 UNITS 2000
PPM 200000

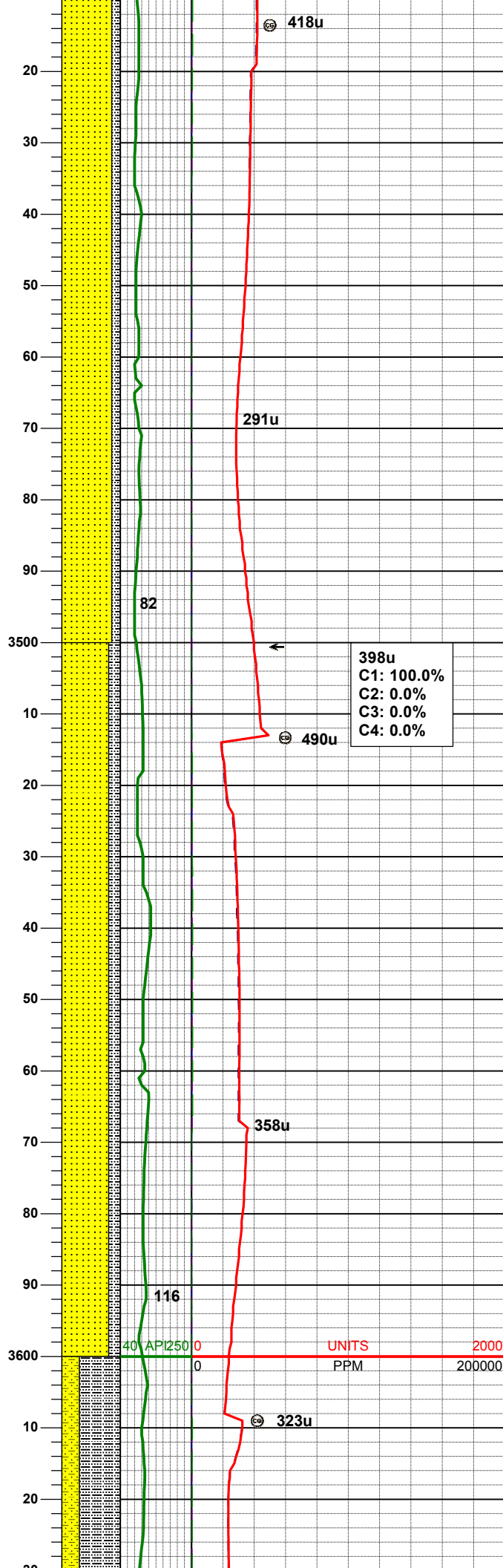
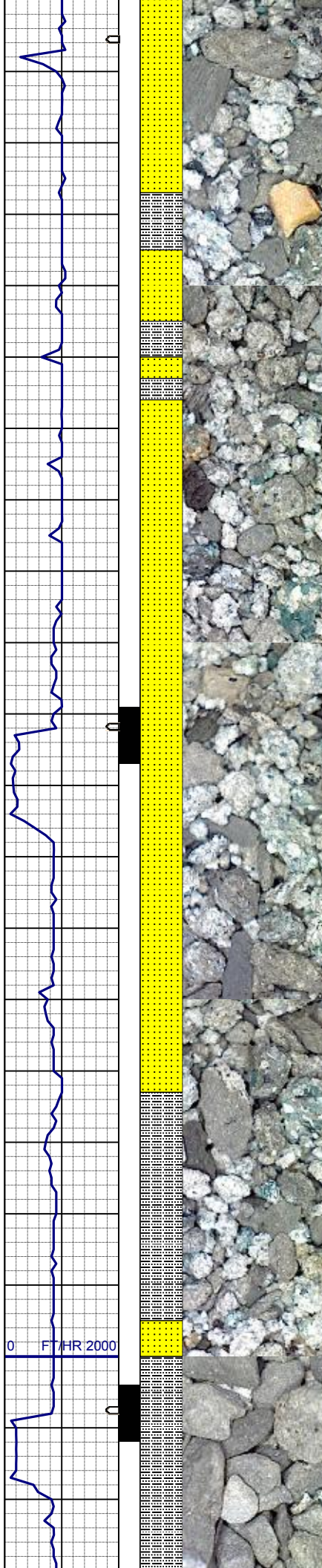
SS: ltgy-gy-trnsl, sbang-ang, fgr, psrt,
wrnnd, arg cmt, tr lit frag, abnt glau
SHYSS: ltgy-gy, s&p ip, sbang, v fri,
vfgr, psrt, wrnnd, abnt cly, arg cmt, sl
calc

MD	3269'
INC	8.0°
AZM	148.7°
TVD	3260.65'

418u
C1: 100.0%
C2: 0.0%
C3: 0.0%
C4: 0.0%

SS: ltgy-gy-trnsl, sbang-ang, fgr, psrt,
wrnnd, arg cmt, tr lit frag, abnt glau
SHYSS: ltgy-gy, s&p ip, sbang, v fri,
vfgr, psrt, wrnnd, abnt cly, arg cmt, sl
calc
SLTYSH: ltgy-gy, sbbkly-sbplty, sft, gt
-sdy tex, arg cmt

MD	3364'
INC	8.4°
AZM	148.2°
TVD	3354.67'



SS: ltgy-gy-trnsl, sbang-ang, fgr, psrt, wrndd, arg cmt, tr lit frag, abnt glau
SLTYSH: ltgy-gy, sbblky-sbply, sft, gt-sdy tex, arg cmt

MD 3459'
INC 9.5°
AZM 148.3°
TVD 3448.52'

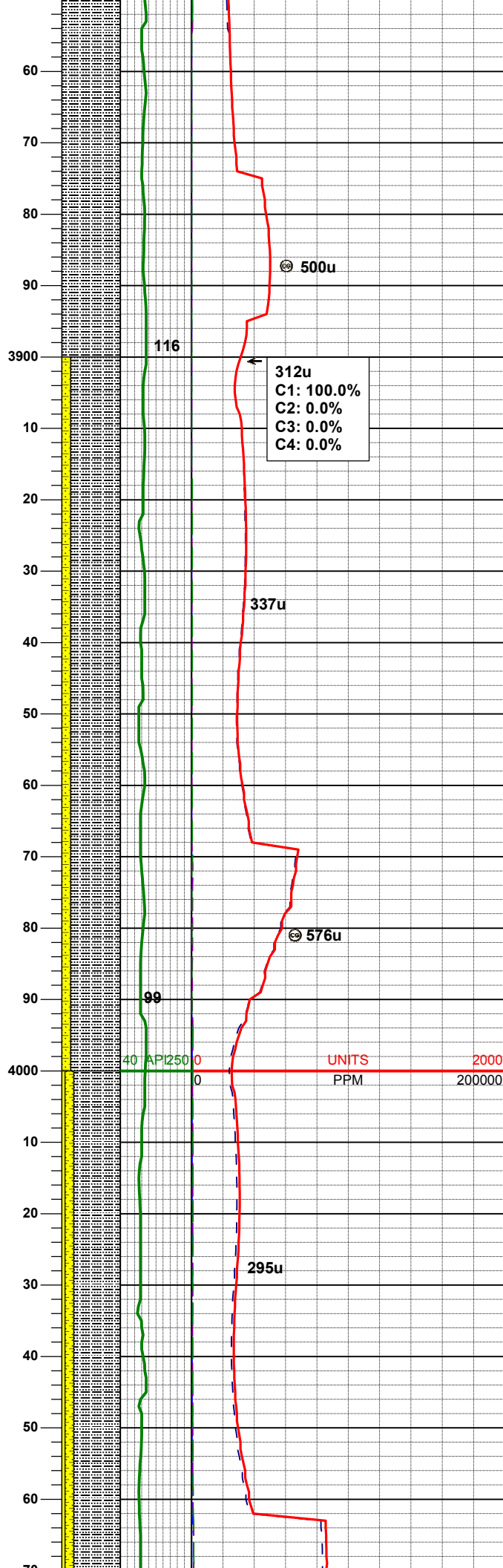
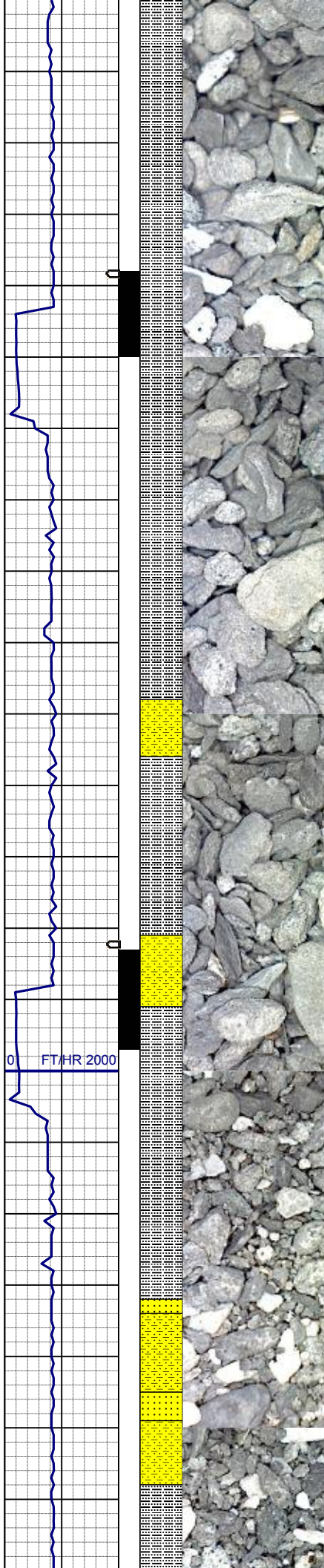
WT IN 8.50/ OUT 8.50
VIS IN 28/ OUT 28

398u
C1: 100.0%
C2: 0.0%
C3: 0.0%
C4: 0.0%

SS: ltgy-gy-trnsl, sbang-ang, fgr, psrt, wrndd, arg cmt, tr lit frag, abnt glau
SLTYSH: ltgy-gy, sbblky-sbply, sft, gt-sdy tex, arg cmt

MD 3554'
INC 9.4°
AZM 141.0°
TVD 3542.20'

WT IN 8.40/ OUT 8.40
VIS IN 28/ OUT 28



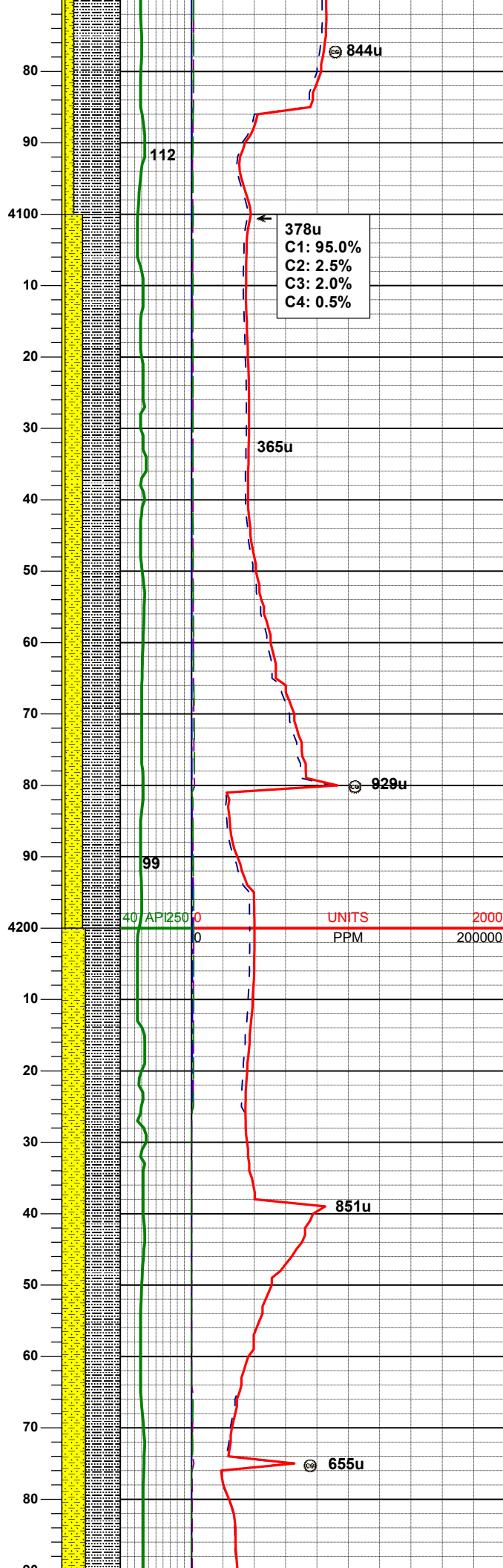
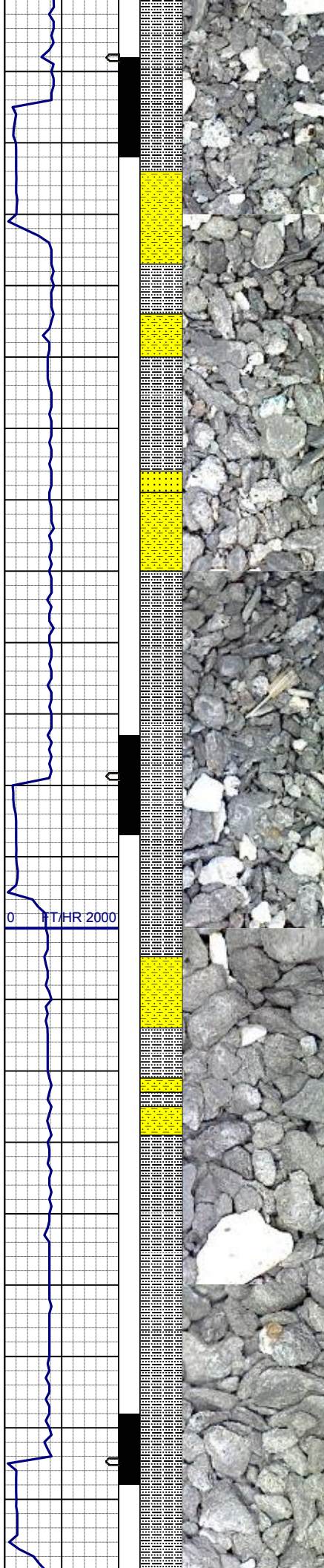
-sdy tex, arg cmt

MD 3933'
INC 5.3°
AZM 121.1°
TVD 3917.95'

SLTYSH: ltgy-gy, sbblky-sbplty, sft, gt
-sdy tex, arg cmt
SHYSS: ltgy-gy, s&p ip, sbang, v fri,
vfgr, psrt, wrndd, abnt cly, arg cmt, sl
calc

MD 4028'
INC 4.6°
AZM 97.4°
TVD 4012.61'

SLTYSH: ltgy-gy, sbblky-sbplty, sft, gt
-sdy tex, arg cmt
SHYSS: ltgy-gy, s&p ip, sbang, v fri,
vfgr, psrt, wrndd, abnt cly, arg cmt, sl
calc
SS: ltgy-gy-trnsl, sbang-ang, fgr, psrt,
wrndd, arg cmt, tr lit frag, abnt glau



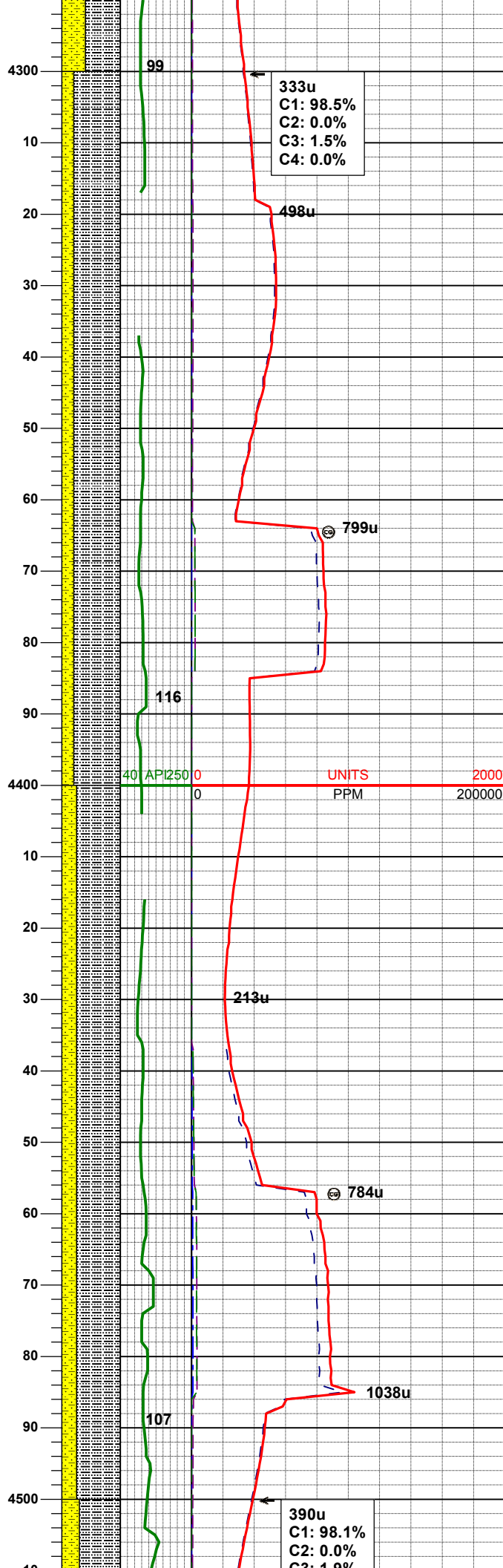
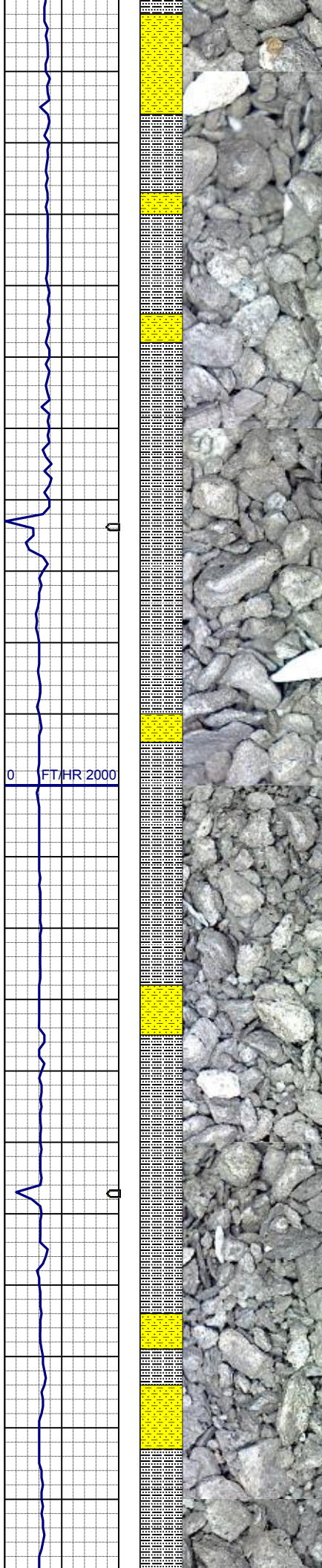
MD 4123'
INC 2.7°
AZM 86.5°
TVD 4107.41'

SLTYSH: ltgy-gy, sbblky-sbplty, sft, gt
-sdy tex, arg cmt
SHYSS: ltgy-gy, s&p ip, sbang, v fri,
vfgr, psrt, wrndd, abnt cly, arg cmt, sl
calc
SS: ltgy-gy-trnsl, sbang-ang, fgr, psrt,
wrndd, arg cmt, tr lit frag, abnt glau

WT IN 8.40/ OUT 8.40
VIS IN 28/ OUT 28

MD 4218'
INC 1.3°
AZM 63.1°
TVD 4202.35'

SLTYSH: ltgy-gy, sbblky-sbplty, sft, gt
-sdy tex, arg cmt
SHYSS: ltgy-gy, s&p ip, sbang, v fri,
vfgr, psrt, wrndd, abnt cly, arg cmt, sl
calc



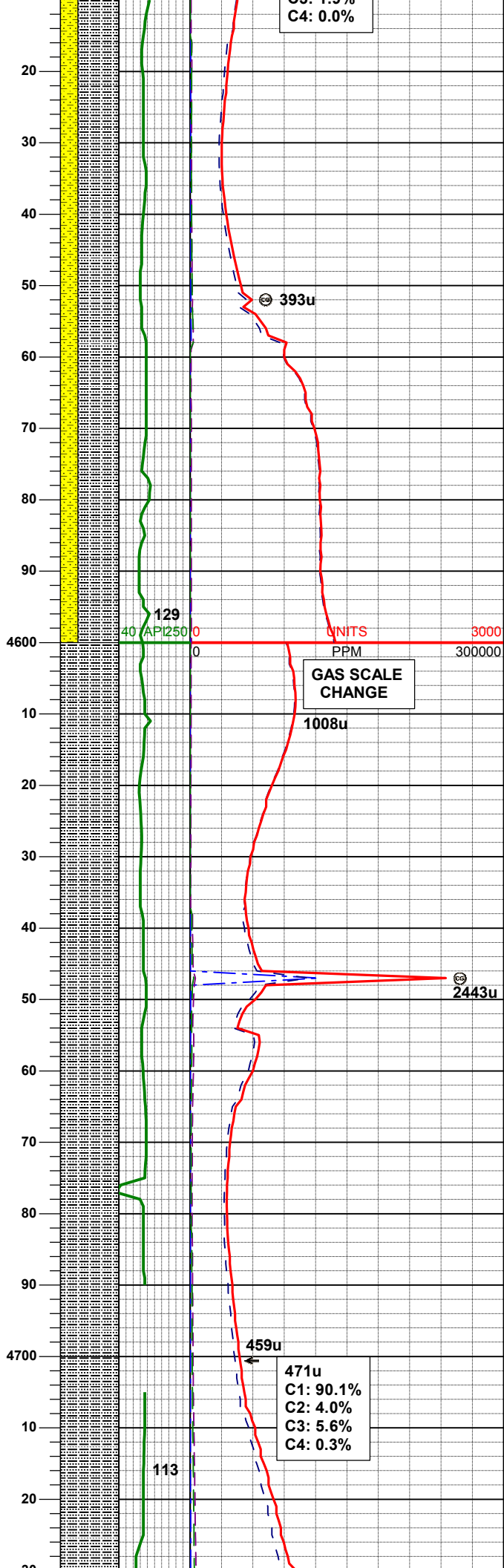
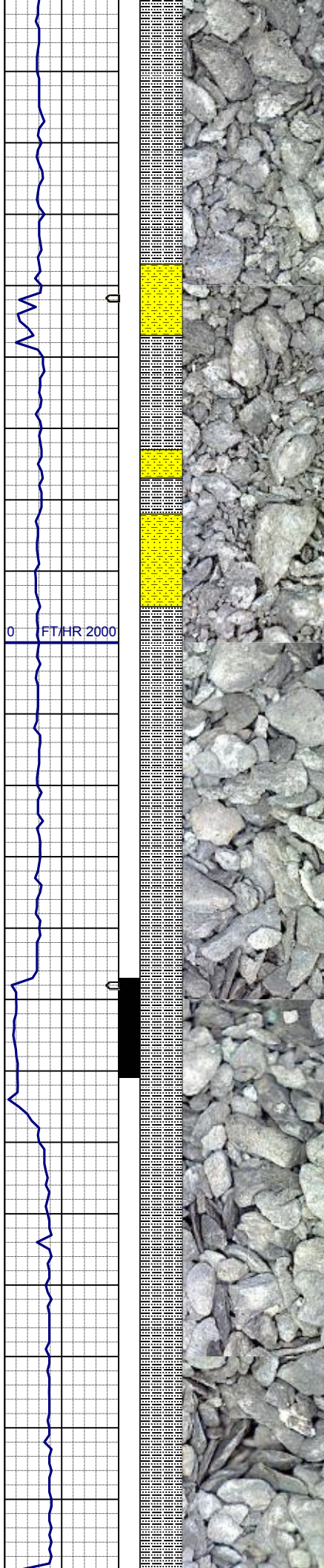
MD 4312'
INC 0.1°
AZM 343.6°
TVD 4296.34'

SLTYSH: ltgy-gy, sbbiky-sbply, sft, gt
-sdy tex, arg cmt
SHYSS: ltgy-gy, s&p ip, sbang, v fri,
vfgr, psrt, wrndd, abnt cly, arg cmt, sl
calc

MD 4407'
INC 1.1°
AZM 252.8°
TVD 4391.34'

SLTYSH: ltgy-gy, sbbiky-sbply, sft, gt
-sdy tex, arg cmt
SHYSS: ltgy-gy, s&p ip, sbang, v fri,
vfgr, psrt, wrndd, abnt cly, arg cmt, sl
calc

MD 4502'
INC 2.2°
AZM 243.1°
TVD 4486.30'



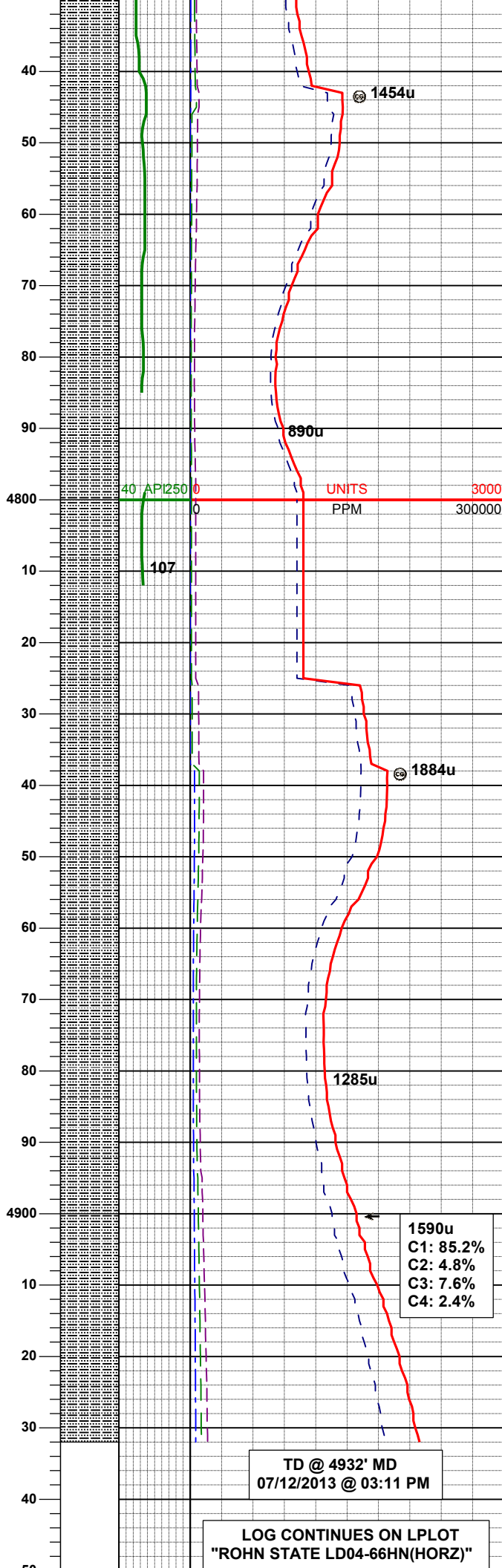
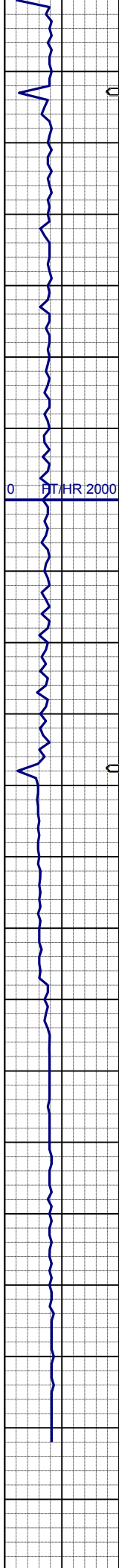
SLTYSH: ltgy-gy, sbblky-sbply, sft, gt
-sdy tex, arg cmt
SHYSS: ltgy-gy, s&p ip, sbang, v fri,
vfgr, psrt, wrndd, abnt cly, arg cmt, sl
calc

MD	4597'
INC	1.8°
AZM	234.5°
TVD	4581.24'

SLTYSH: ltgy-gy, sbblky-sbply, sft, gt
-sdy tex, arg cmt

MD	4691'
INC	0.4°
AZM	45.2°
TVD	4675.23'

WT IN 8.80/ OUT 8.80
VIS IN 29/ OUT 29



SLTYSH: ltgy-gy, sbblky-sbplty, sft, gt
-sdy tex, arg cmt

MD	4786'
INC	0.3°
AZM	27.4°
TVD	4770.22'

SLTYSH: ltgy-gy, sbblky-sbplty, sft, gt
-sdy tex, arg cmt

SLTYSH: ltgy-gy, sbblky-sbplty, sft, gt
-sdy tex, arg cmt

TD @ 4932' MD
07/12/2013 @ 03:11 PM

LOG CONTINUES ON L PLOT
"ROHN STATE LD04-66HN(HORZ)"

1590u
C1: 85.2%
C2: 4.8%
C3: 7.6%
C4: 2.4%

