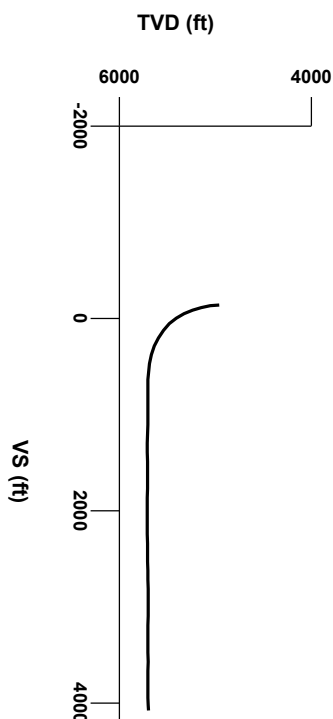


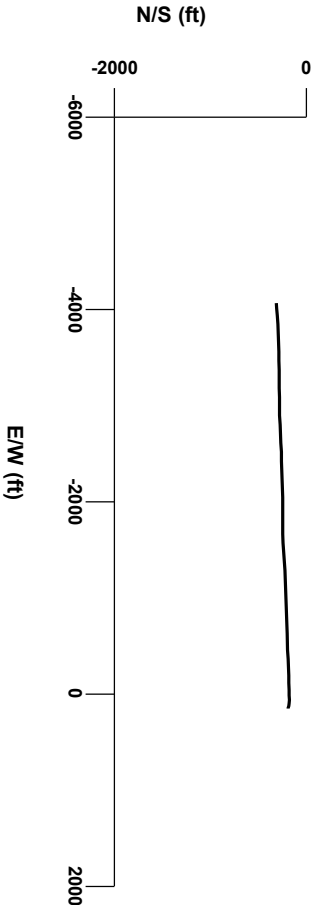
LOG created using LPLOT VH Version 3.0, July 16, 2013, Copyright (C) 1999-2009 Pason Systems Corp.

OPERATOR: NOBLE ENERGY INC
WELL: ROHN STATE LD04-66HN
LOCATION: SEC 4 T9N R58W
COUNTY: WELD
STATE: COLORADO
SPOT: 1787' FNL; 480' FEL
ELEVATION: 4706' GL; 4730' KB
FIELD: WILDCAT
SPUD DATE: 07/11/2013
TD DATE: 07/16/2013
DATES LOGGED: 07/12/2013 - 07/16/2013
DEPTHS LOGGED: 4932' - 9628' MD
LOGGERS: LAURA KELLOGG; CONOR PESICKA
DRILLING FLUID: LSND
DRILLING RIG: H&P 273
API: 05-123-37481
LOG TYPE: HORIZONTAL
SCALE: 1:240 (5 inches per 100 feet)
REMARKS: WELLSITE GEOLOGICAL SERVICES
 PROVIDED BY COLUMBINE LOGGING INC.



Survey Elevation

Survey Plan



6000

LITHOLOGIES

Chalk

Marl

No Sample

Silty Shale

ENGINEERING SYMBOLS

Casing

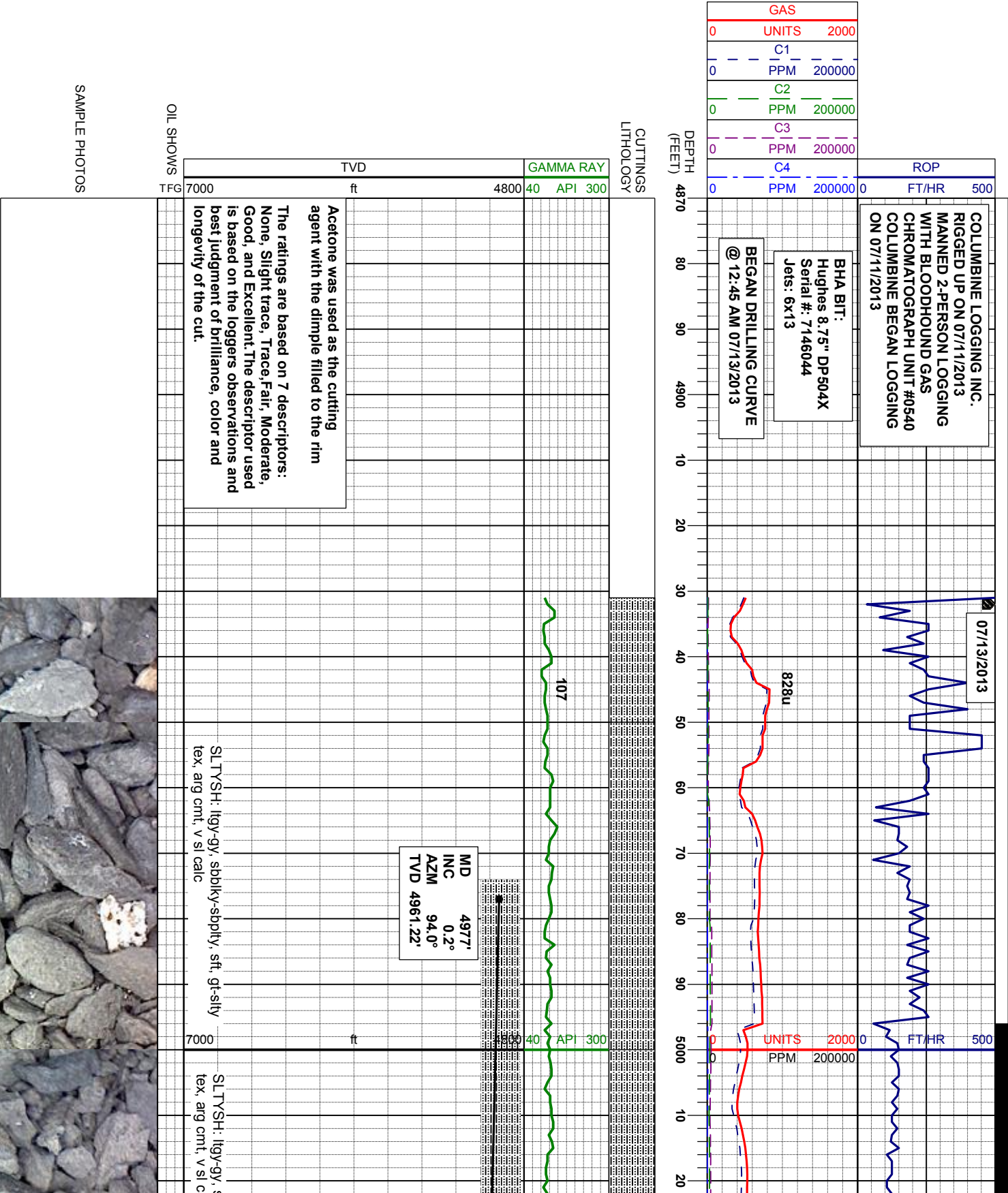
Casing

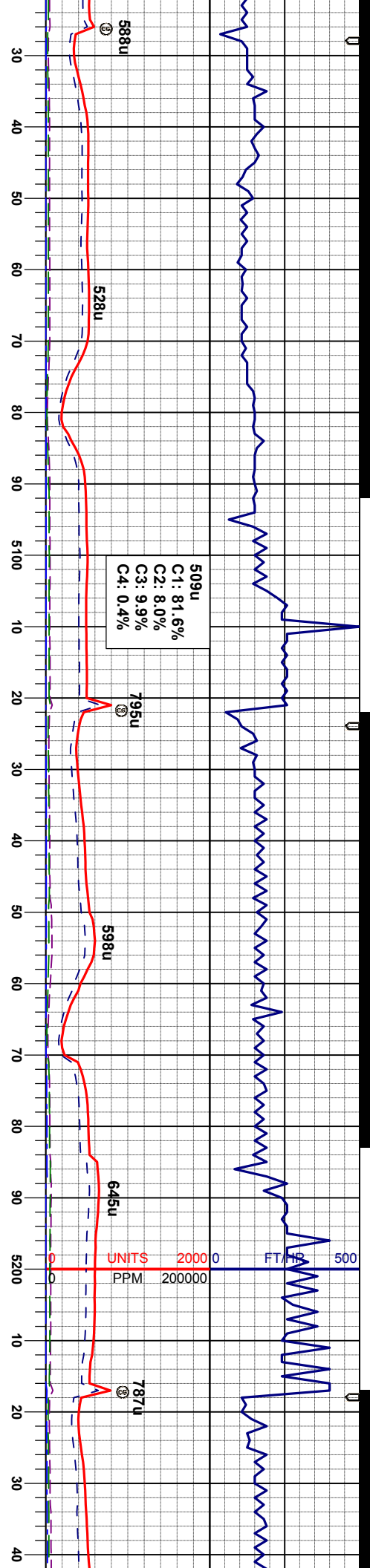
Connection

Connection Gas

Midnight Depth

Oil To Surface





WT IN 9.60/ OUT 9.60
VIS IN 32/ OUT 32

MD 5072'
INC 8.5°
AZM 282.5°
TVD 5055.88'

WT IN 9.80/ OUT 9.80
VIS IN 33/ OUT 33

MD 5167'
INC 15.0°
AZM 283.9°
TVD 5148.84'

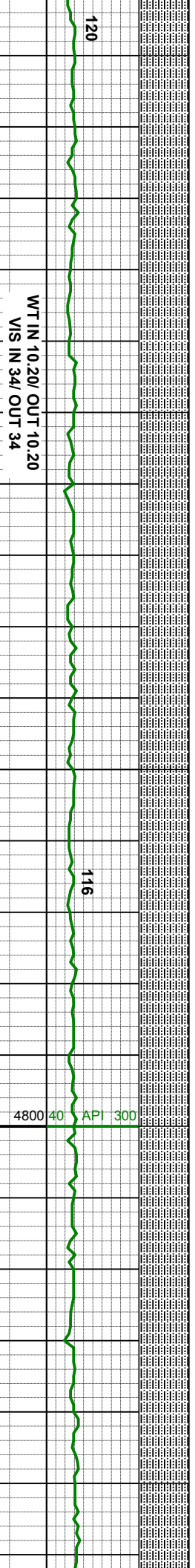
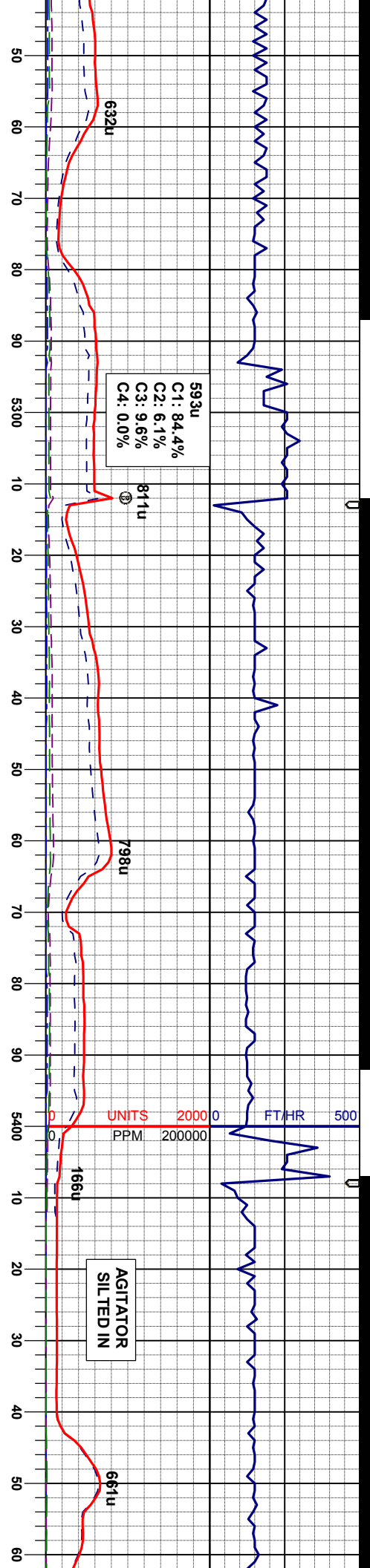
SLTYSH: lgy-gy, sbblky-sbply, sft, gt-sily
tex, arg cnt, v sl calc

SLTYSH: lgy-gy, sbblky-sbply, sft, gt-sily
tex, arg cnt, v sl calc

SLTYSH: lgy-gy, sbblky-sbply, sft, gt-sily
tex, arg cnt, v sl calc

SLTYSH: lgy-gy, sbblky-sbply, sft, gt-sily
tex, arg cnt, v sl calc





MD 5262'
INC 19.9°
AZM 276.3°
TVD 5239.45'

MD 5357'
INC 25.5°
AZM 271.4°
TVD 5327.07'

MD 5451'
INC 33.5°
AZM 267.7°
TVD 5408.82'

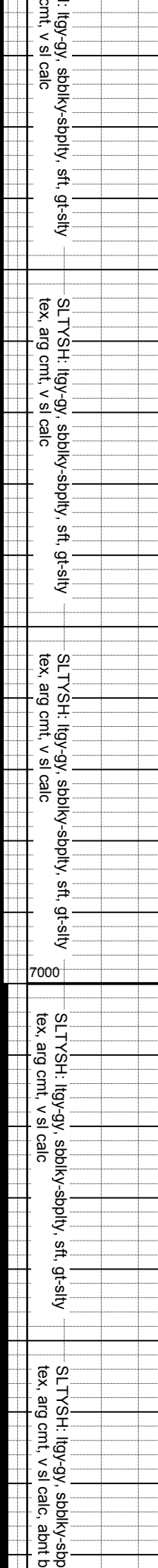
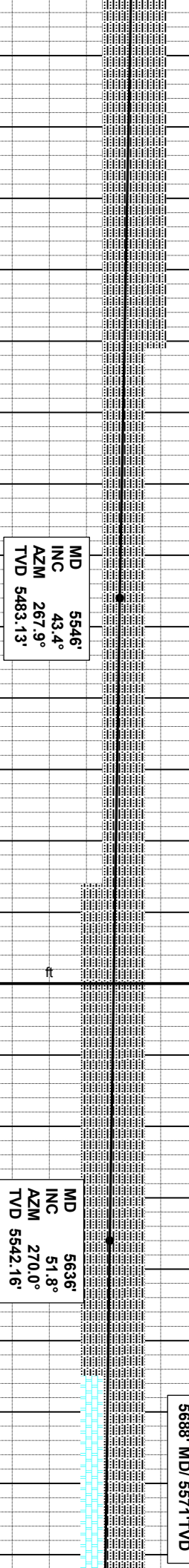
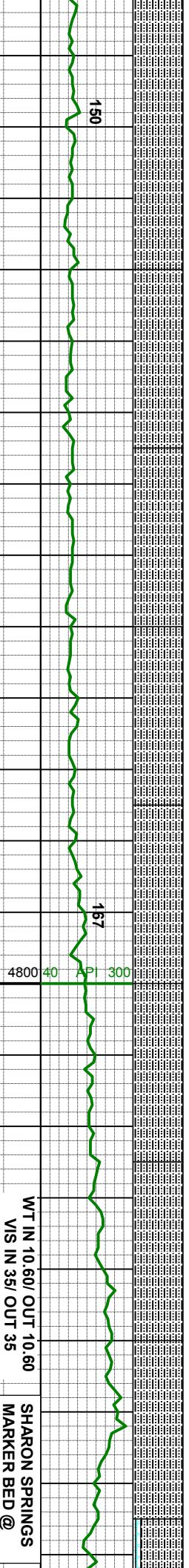
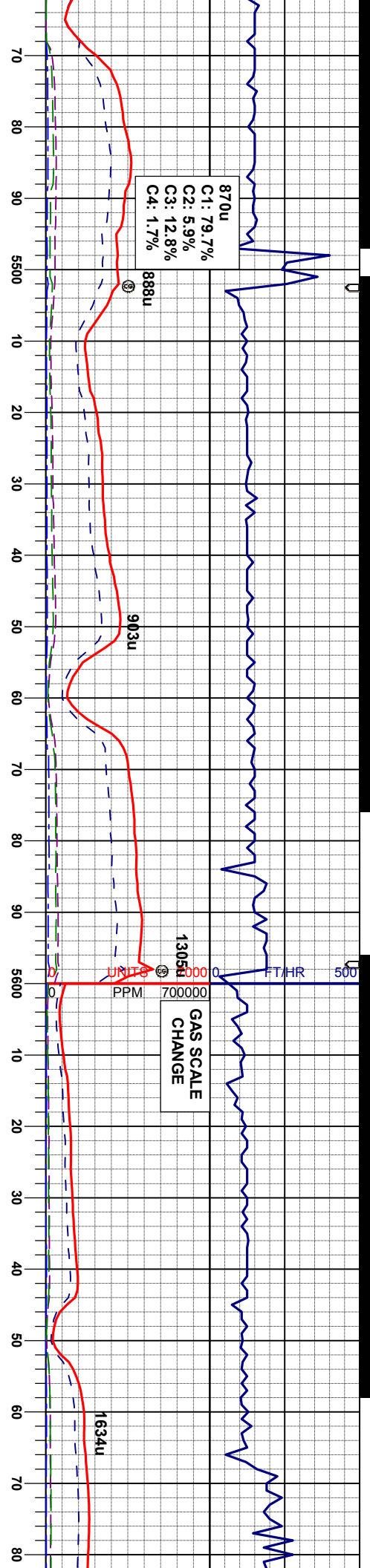
SLTVSH: lty-gy, sbblky-sbply, sft, gt-sily
tex, arg cnt, v sl calc

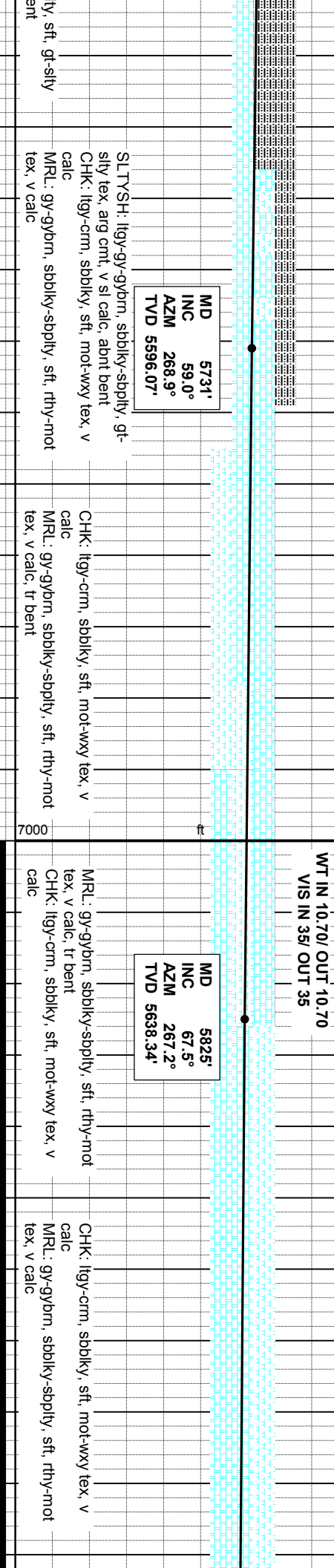
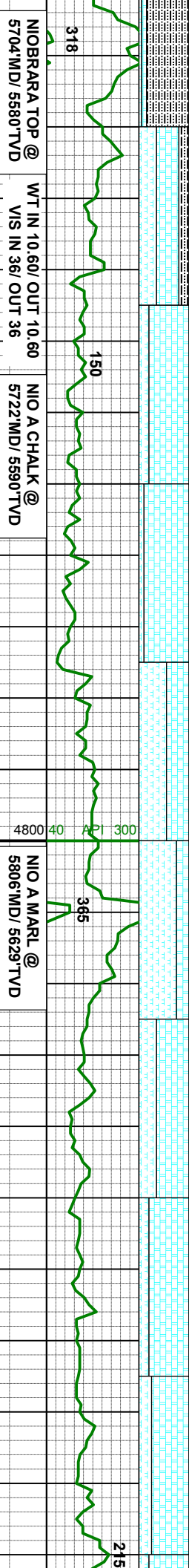
SLTVSH: lty-gy, sbblky-sbply, sft, gt-sily
tex, arg cnt, v sl calc

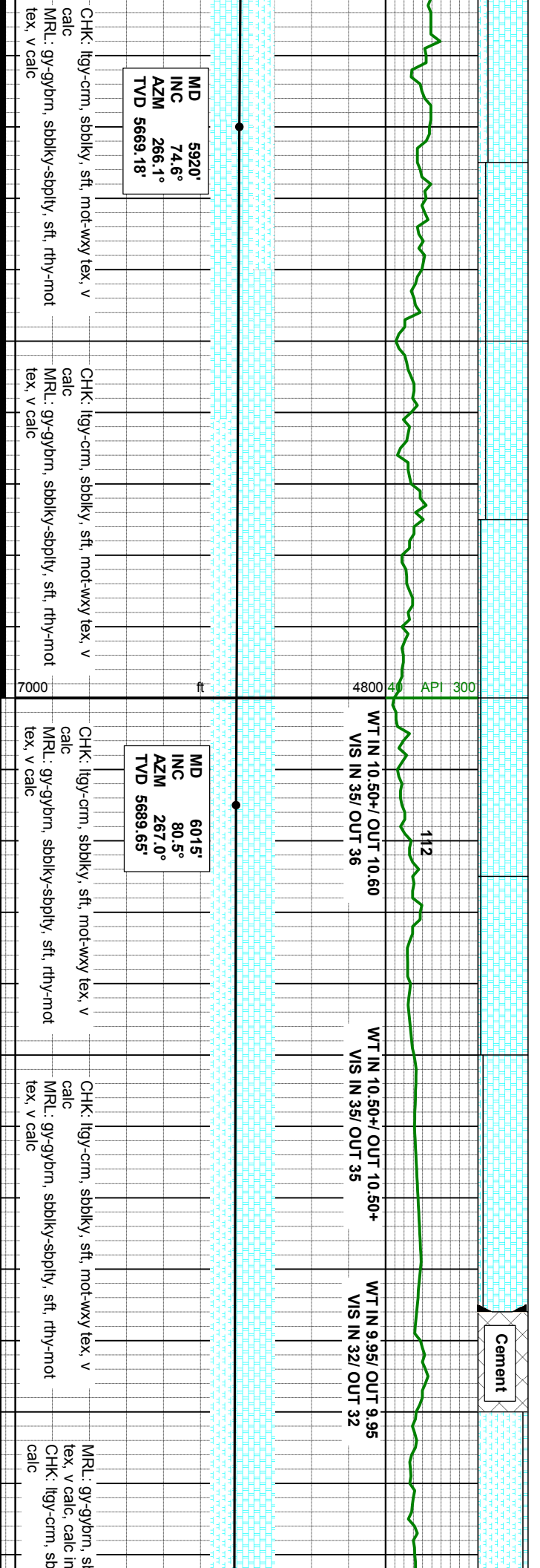
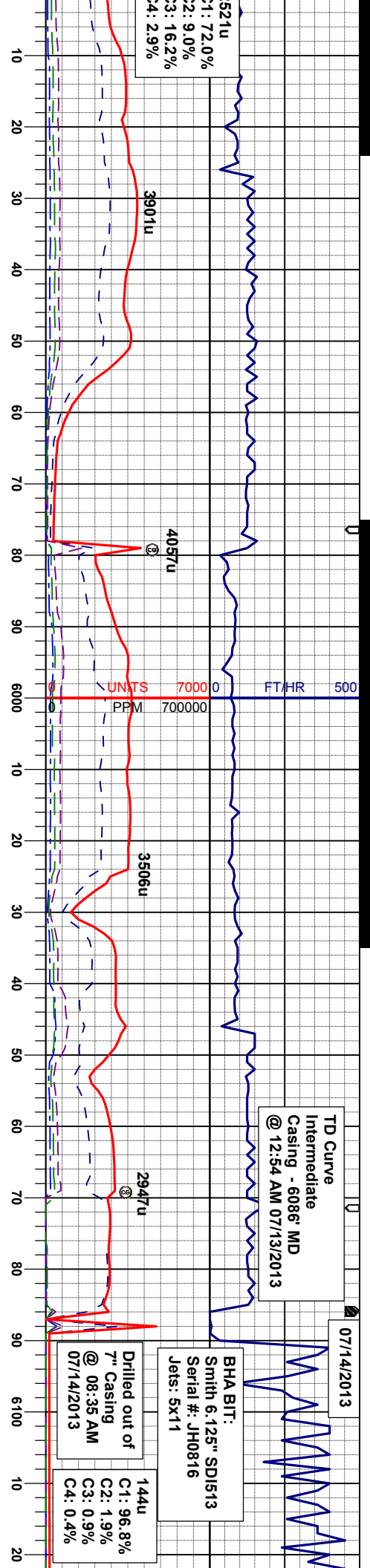
SLTVSH: lty-gy, sbblky-sbply, sft, gt-sily
tex, arg cnt, v sl calc

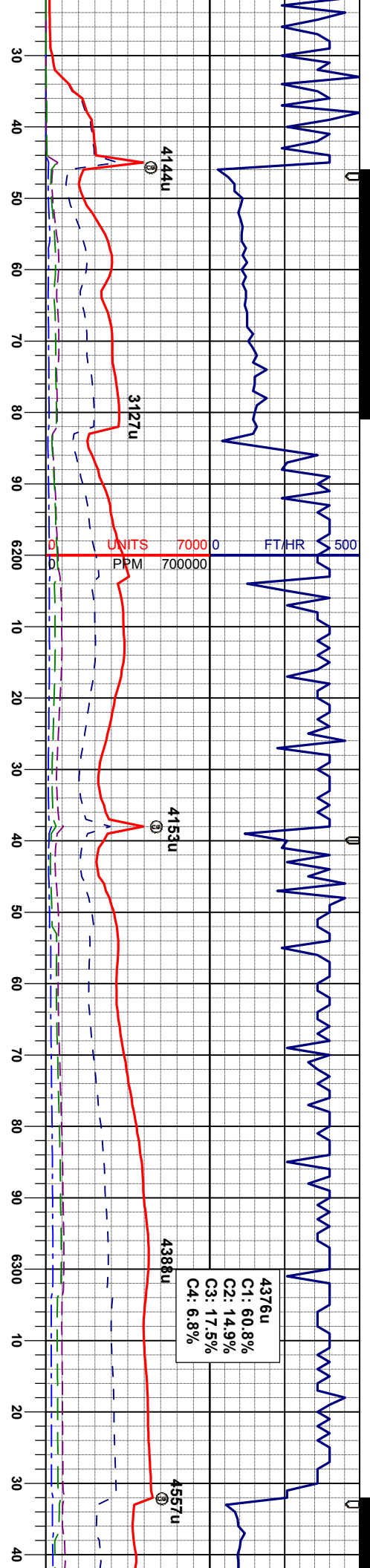
SLTVSH: lty-gy, sbblky-sbply, sft, gt-sily
tex, arg cnt, v sl calc











4376u
C1: 60.8%
C2: 14.9%
C3: 17.5%
C4: 6.8%

WT IN 9.95/ OUT 9.95
VIS IN 30/ OUT 30

MD 6184'
INC 88.2°
AZM 269.6°
TVD 5705.15'

MRL: gy-gybm, sbblky-sbply, sft, rthy-mot
tex, v calc, calc incl, tr bent w/ pyr
CHK: llyg-crm, sbblky, sft, mot-wxy tex, v
calc

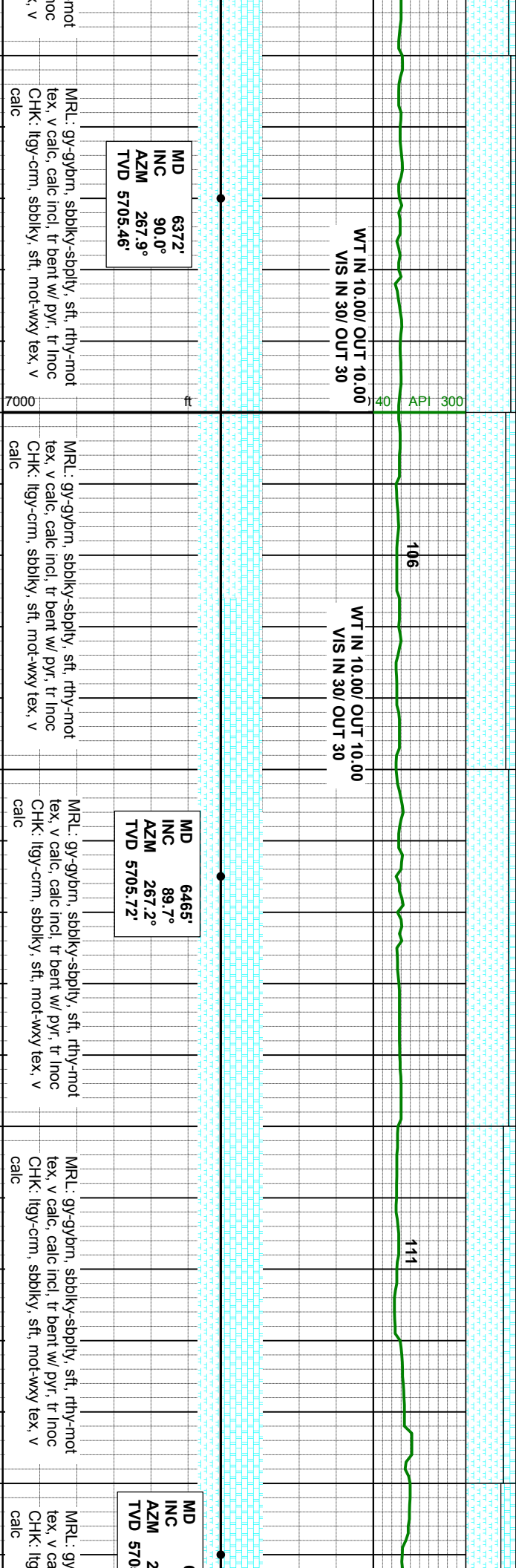
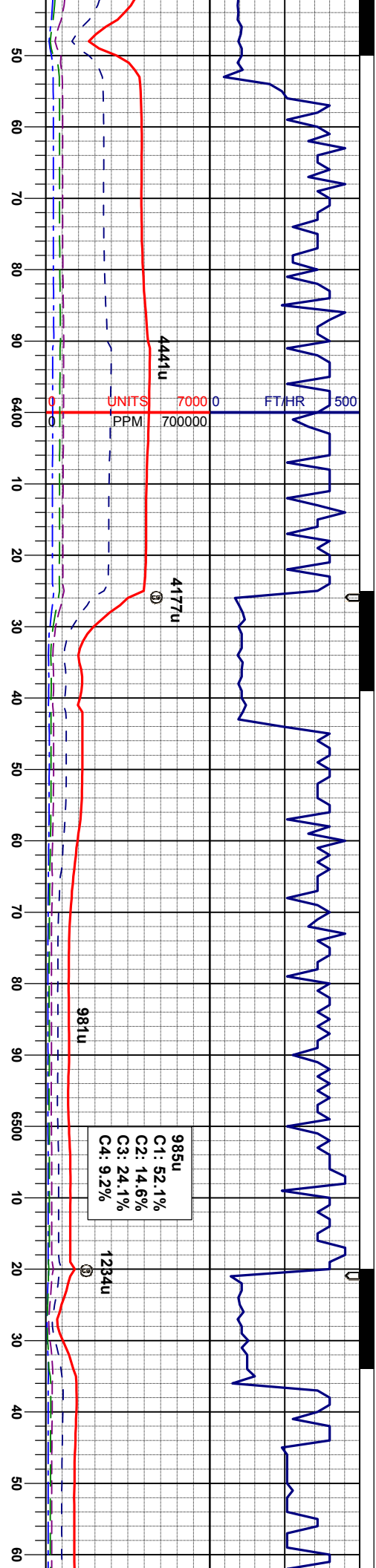
MRL: gy-gybm, sbblky-sbply, sft, rthy-mot
tex, v calc, calc incl, tr bent w/ pyr
CHK: llyg-crm, sbblky, sft, mot-wxy tex, v
calc

MD 6277'
INC 90.7°
AZM 268.9°
TVD 5706.05'

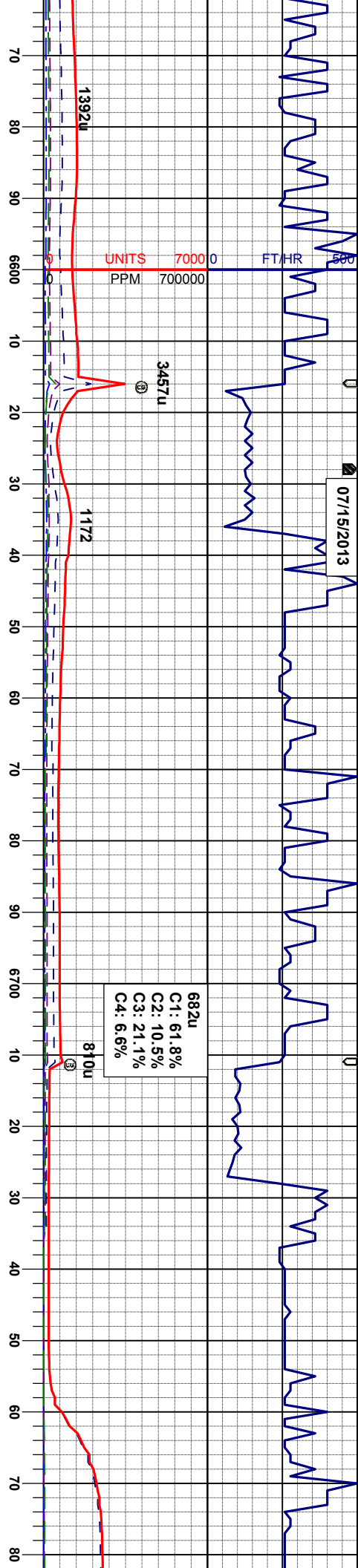
MRL: gy-gybm, sbblky-sbply, sft, rthy-mot
tex, v calc, calc incl, tr bent w/ pyr, tr inoc
CHK: llyg-crm, sbblky, sft, mot-wxy tex, v
calc

MRL: gy-gybm, sbblky-sbply, sft, rthy-mot
tex, v calc, calc incl, tr bent w/ pyr, tr inoc
CHK: llyg-crm, sbblky, sft, mot-wxy tex, v
calc





07/15/2013



API 300

WT IN 10.00/ OUT 10.00
VIS IN 30/ OUT 30

5560'
80.9°
67.3°
5.97'

ft

MRL: gy-gybrn, sbbiky-sbply, sft, rthy-mot
tex, v calc, calc incl, tr bent w/ pyr, tr inoc
CHK: ltgy-crm, sbbiky, sft, mot-wxy tex, v
calc

MD 6654'
INC 89.6°
AZM 268.4°
TVD 5706.30'

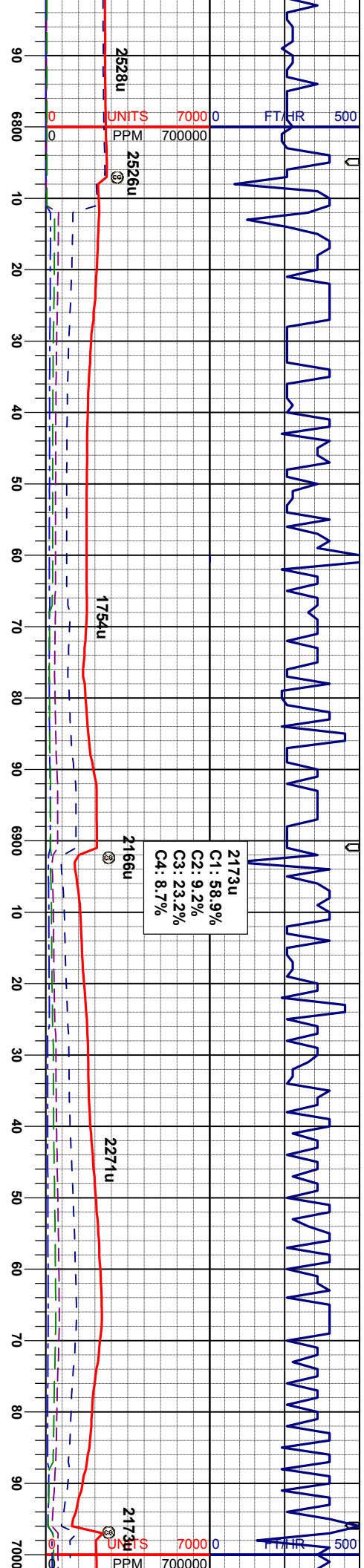
MRL: gy-gybrn, sbbiky-sbply, sft, rthy-mot
tex, v calc, calc incl, tr bent w/ pyr, tr inoc
CHK: ltgy-crm, sbbiky, sft, mot-wxy tex, v
calc

MRL: gy-gybrn, sbbiky-sbply, sft, rthy-mot
tex, v calc, calc incl, tr bent w/ pyr, tr inoc
CHK: ltgy-crm, sbbiky, sft, mot-wxy tex, v
calc

MD 6749'
INC 88.4°
AZM 266.6°
TVD 5707.95'

MRL: gy-gybrn, sbbiky-sbply
tex, v calc, calc incl, tr bent w
CHK: ltgy-crm, sbbiky, sft, mot
calc





API 300 4800 40

WT IN 10.15/ OUT 10.15
VIS IN 31/ OUT 31

150

111

API 300 4800 40

MD 6844'
INC 89.1°
AZM 266.6°
TVD 5710.03'

MD 6939'
INC 89.9°
AZM 266.6°
TVD 5710.86'

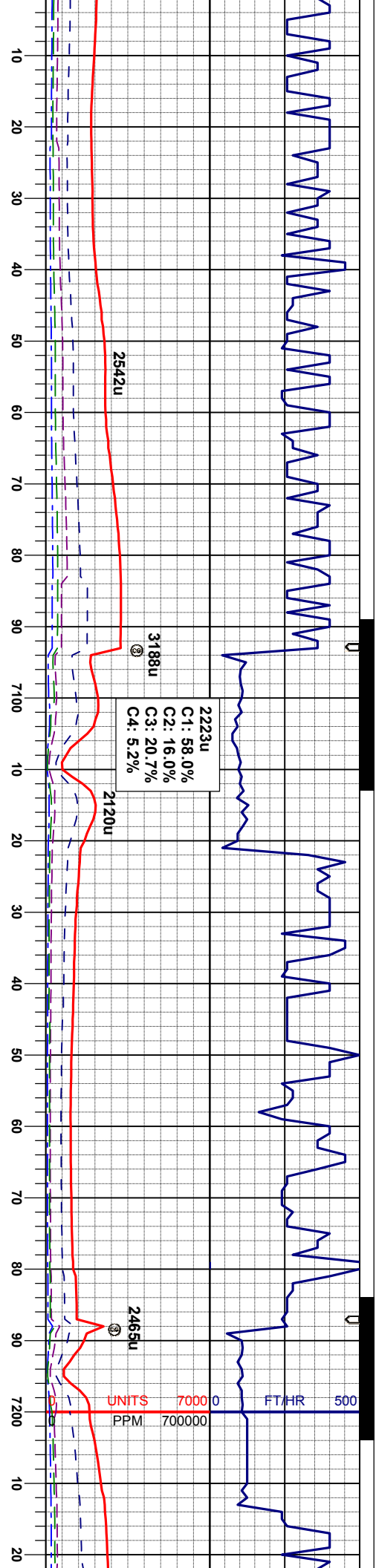
MRL: gy-gybrn, sbblky-sbply, sft, rthy-mot
tex, v calc, calc incl, tr bent w/ pyr, tr inoc
CHK: ltgy-crm, sbblky, sft, mot-wxy tex, v
calc

MRL: gy-gybrn, sbblky-sbply, sft, rthy-mot
tex, v calc, calc incl, tr bent w/ pyr, tr inoc
CHK: ltgy-crm, sbblky, sft, mot-wxy tex, v
calc

MRL: gy-gybrn, sbblky-sbply, sft, rthy-mot
tex, v calc, calc incl, tr bent w/ pyr, tr inoc
CHK: ltgy-crm, sbblky, sft, mot-wxy tex, v
calc

MRL: gy-gybrn, sbblky-sbply, sft, rthy-mot
tex, v calc, calc incl, tr bent w/ pyr, tr inoc
CHK: ltgy-crm, sbblky, sft, mot-wxy tex, v
calc





WT IN 10.15/ OUT 10.15
VIS IN 30/ OUT 30

WT IN 10.10/ OUT 10.10
VIS IN 30/ OUT 30

MD 7034'
INC 91.4°
AZM 265.9°
TVD 5709.78'

MD 7129'
INC 90.6°
AZM 267.5°
TVD 5708.12'

MD
INC
AZM
TVD

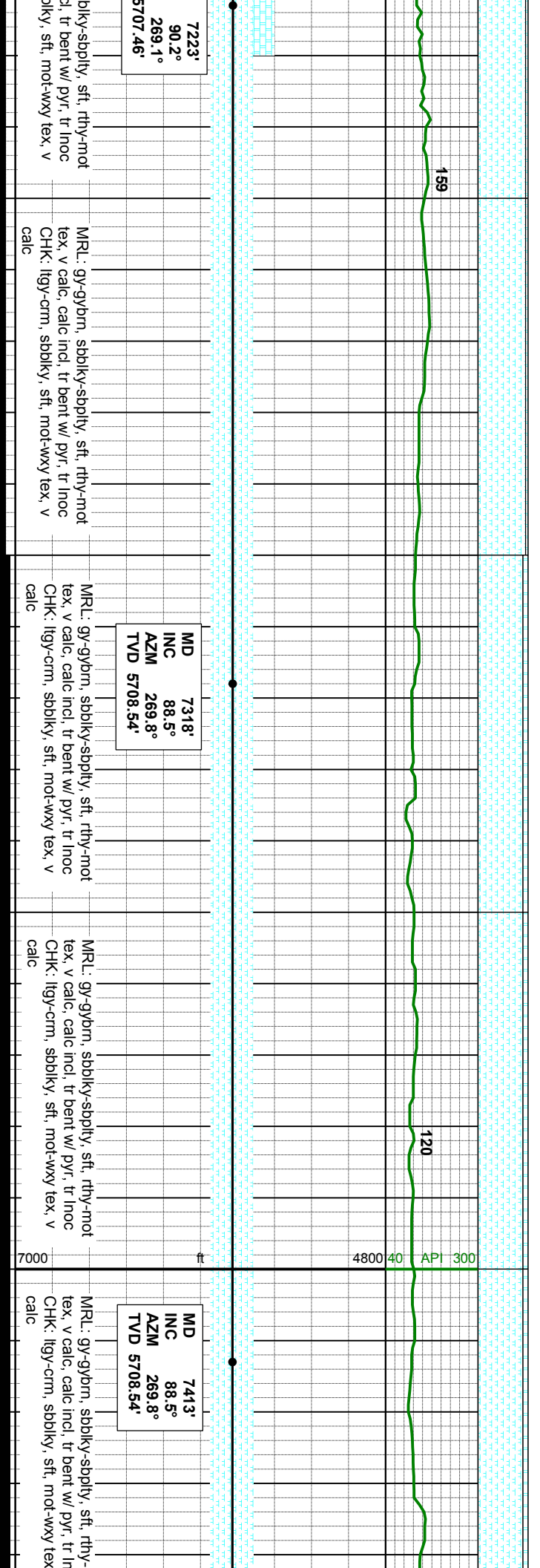
MRL: gy-gybrn, sbbky-sbply, sft, rthy-mot
tex, v calc, calc incl, tr bent w/ pyr, tr inoc
CHK: lligy-crm, sbbky, sft, mot-why tex, v
calc

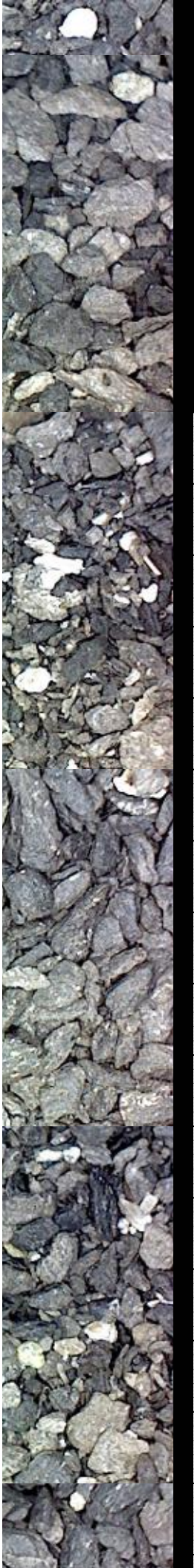
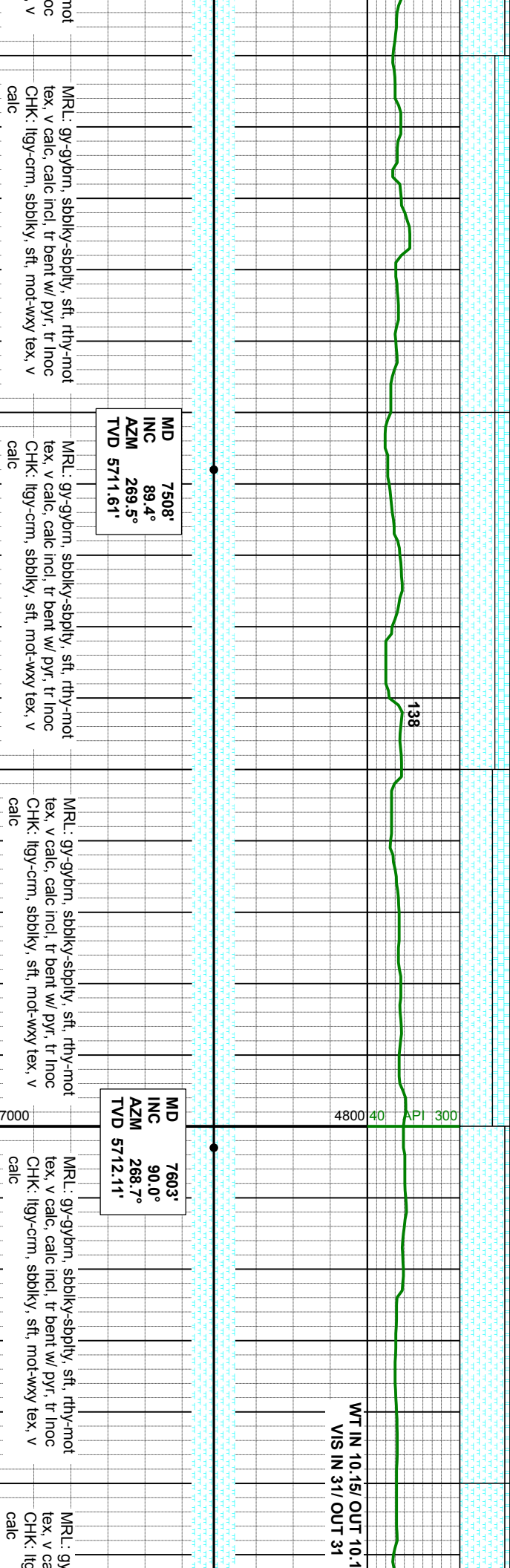
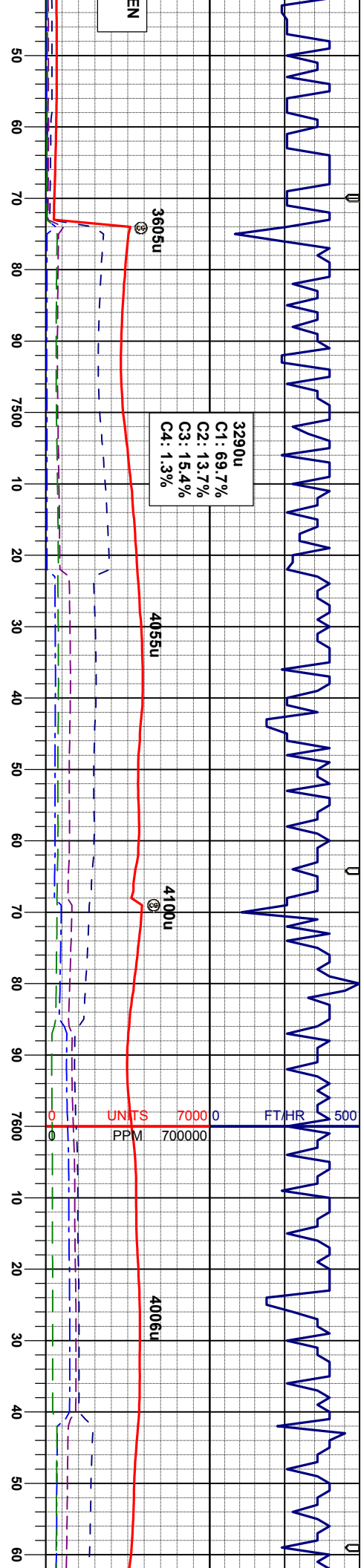
MRL: gy-gybrn, sbbky-sbply, sft, rthy-mot
tex, v calc, calc incl, tr bent w/ pyr, tr inoc
CHK: lligy-crm, sbbky, sft, mot-why tex, v
calc

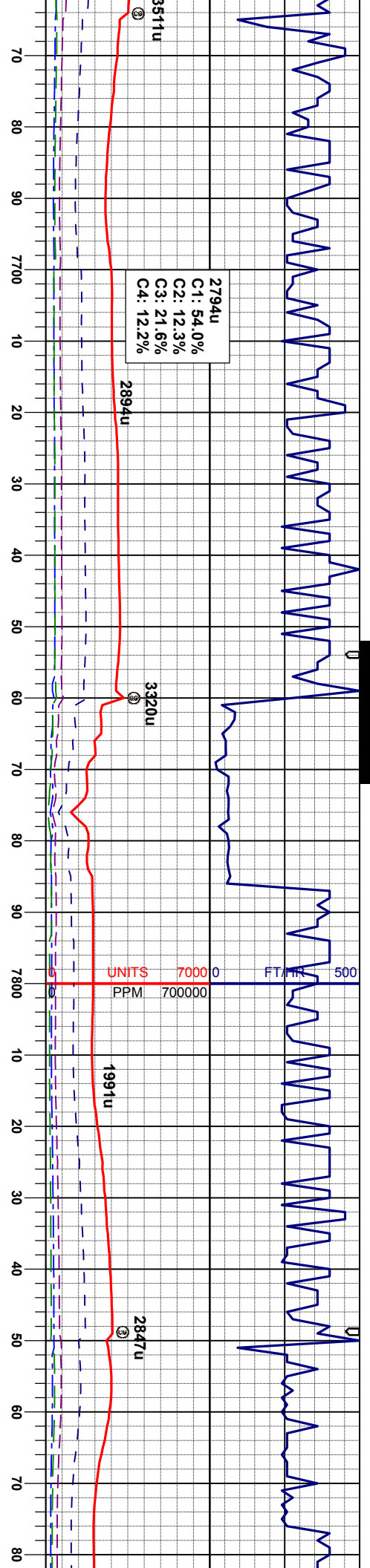
MRL: gy-gybrn, sbbky-sbply, sft, rthy-mot
tex, v calc, calc incl, tr bent w/ pyr, tr inoc
CHK: lligy-crm, sbbky, sft, mot-why tex, v
calc

MRL: gy-gybrn, sbbky-sbply, sft, rthy-mot
tex, v calc, calc incl, tr bent w/ pyr, tr inoc
CHK: lligy-crm, sbbky, sft, mot-why tex, v
calc



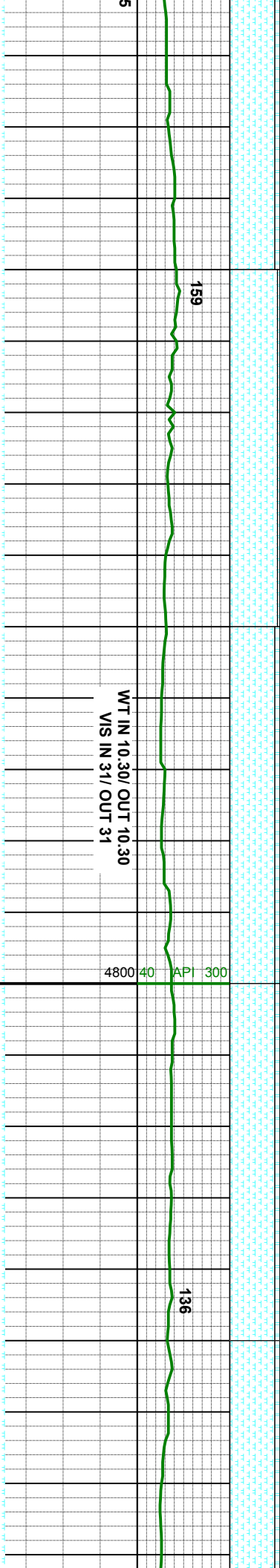




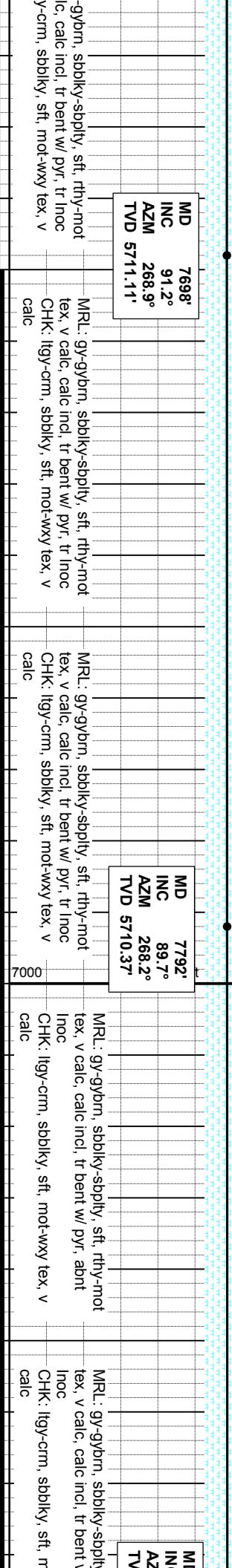


2794u
C1: 54.0%
C2: 12.3%
C3: 21.6%
C4: 12.2%

UNITS 70000
PPM 700000



WT IN 10.30/ OUT 10.30
VIS IN 31/ OUT 31



MD 7698'
INC 91.2°
AZM 268.9°
TVD 5711.11'

MD 7792'
INC 89.7°
AZM 268.2°
TVD 5710.37'

MD 7792'
INC 89.7°
AZM 268.2°
TVD 5710.37'

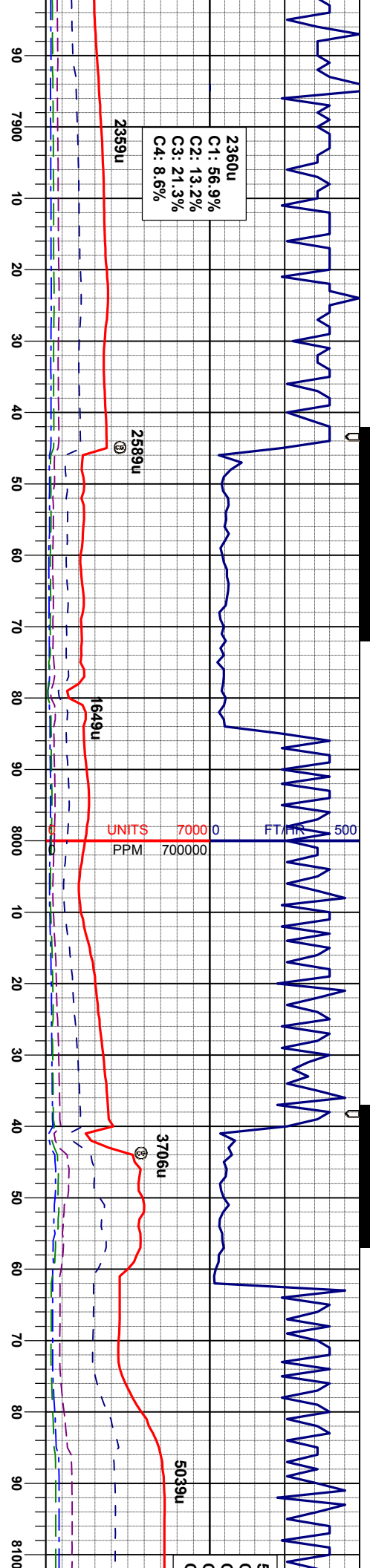
MRL: gy-gybrn, sbbiky-sbpily, sft, rthy-mot
tex, v calc, calc incl, tr bent w/ pyr, tr inoc
CHK: llyg-crm, sbbiky, sft, mot-wxy tex, v
calc

MRL: gy-gybrn, sbbiky-sbpily, sft, rthy-mot
tex, v calc, calc incl, tr bent w/ pyr, tr inoc
CHK: llyg-crm, sbbiky, sft, mot-wxy tex, v
calc

MRL: gy-gybrn, sbbiky-sbpily, sft, rthy-mot
tex, v calc, calc incl, tr bent w/ pyr, abnt
inoc
CHK: llyg-crm, sbbiky, sft, mot-wxy tex, v
calc

MRL: gy-gybrn, sbbiky-sbpily, sft, rthy-mot
tex, v calc, calc incl, tr bent w/ pyr, abnt
inoc
CHK: llyg-crm, sbbiky, sft, mot-wxy tex, v
calc





WT IN 10.40/ OUT 10.50
VIS IN 32/ OUT 32

WT IN 10.30/ OUT 10.30
VIS IN 32/ OUT 32

WT IN 10.
VIS IN

7887'
91.4°
M 266.8°
D 5709.46'

MD 7982'
INC 90.4°
AZM 269.1°
TVD 5707.97'

MD 8077'
INC 90.0°
AZM 268.6°
TVD 5707.64'

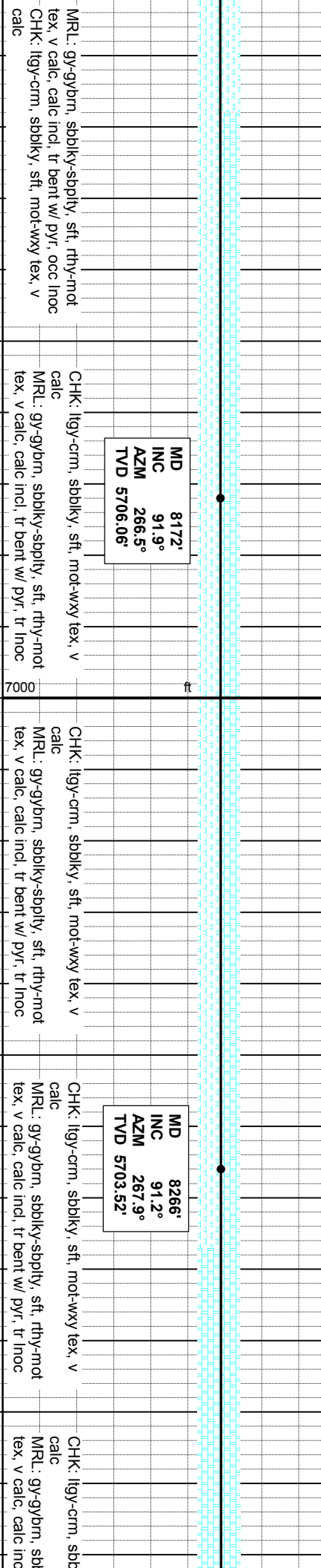
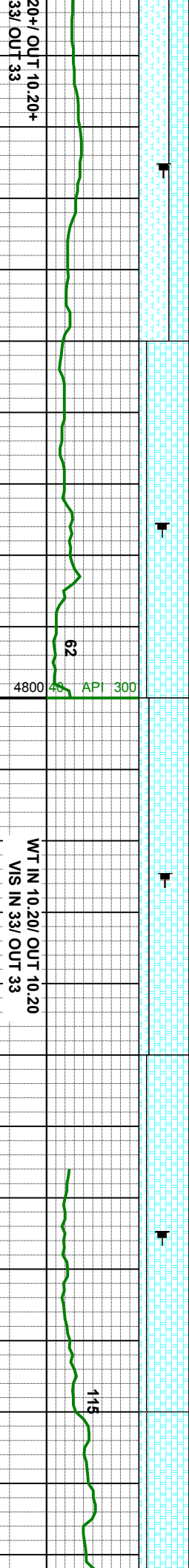
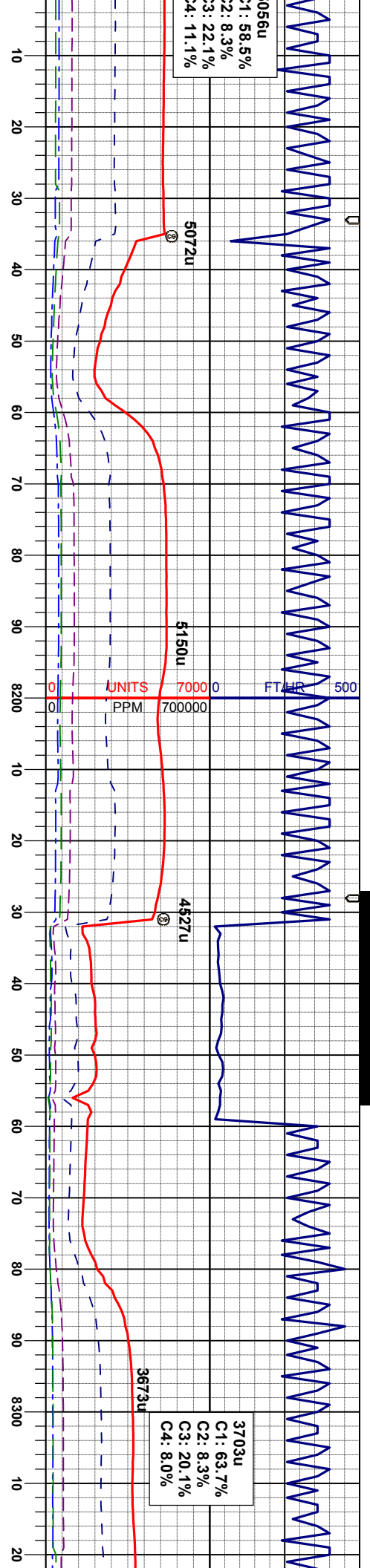
MRL: gy-gybrn, sbblky-sbply, sft, rthy-mot
tex, v calc, calc incl, tr bent w/ pyr, occ inoc
CHK: llyg-crm, sbblky, sft, mot-wxy tex, v
calc

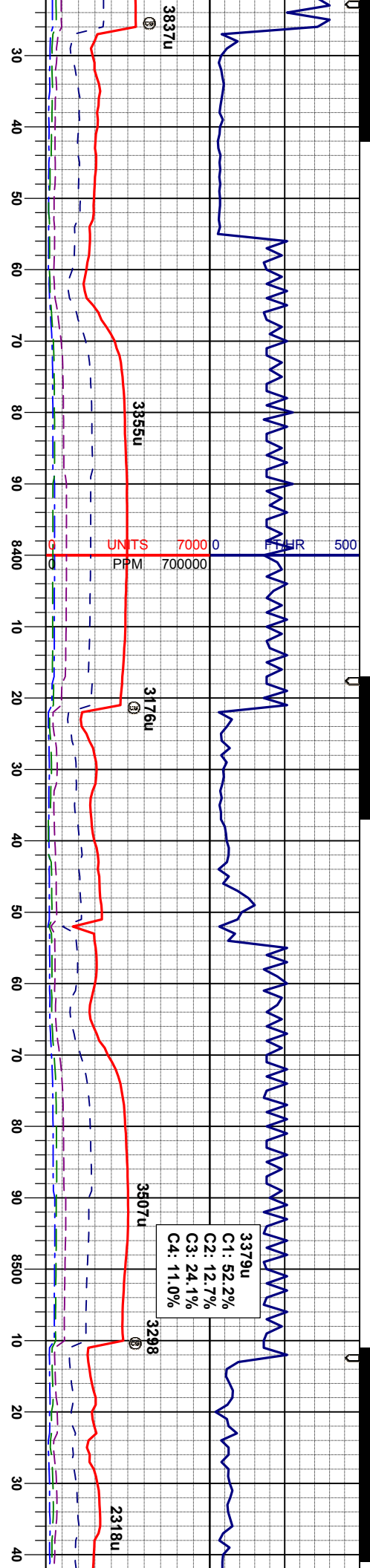
MRL: gy-gybrn, sbblky-sbply, sft, rthy-mot
tex, v calc, calc incl, tr bent w/ pyr, occ inoc
CHK: llyg-crm, sbblky, sft, mot-wxy tex, v
calc

MRL: gy-gybrn, sbblky-sbply, sft, rthy-mot
tex, v calc, calc incl, tr bent w/ pyr, occ inoc
CHK: llyg-crm, sbblky, sft, mot-wxy tex, v
calc

MRL: gy-gybrn, sbblky-sbply, sft, rthy-mot
tex, v calc, calc incl, tr bent w/ pyr, occ inoc
CHK: llyg-crm, sbblky, sft, mot-wxy tex, v
calc







WT IN 10.00+ OUT 10.00+
VIS IN 34/ OUT 34

MD 8361'
INC 90.0°
AZM 267.0°
TVD 5702.52'

CHK: lgy-crm, sbbiky, sft, mot-wxy tex, v
calc
MRL: gy-gybrn, sbbiky-sbply, sft, rthy-mot
tex, v calc, calc incl, tr bent w/ pyr, tr inoc

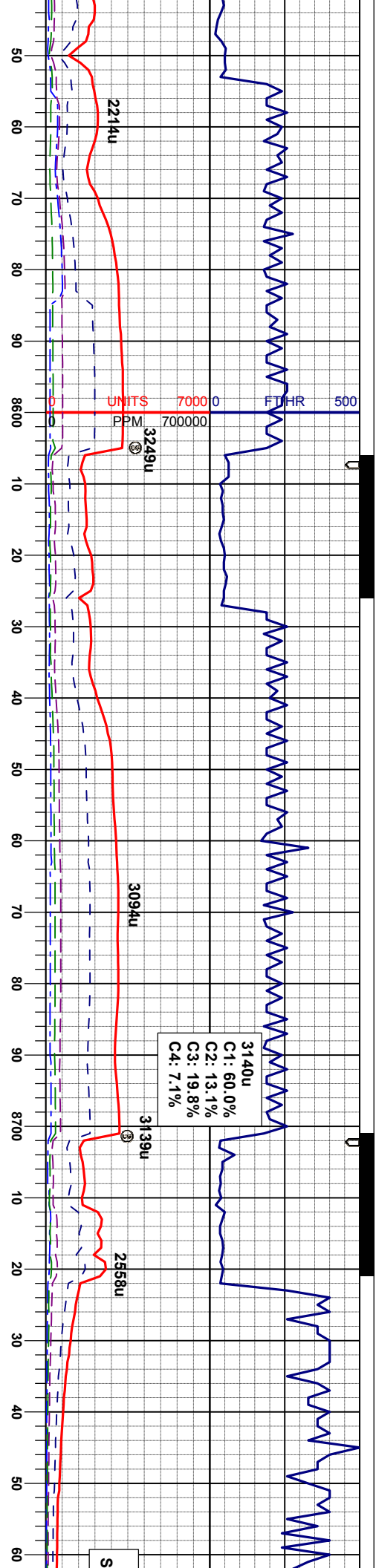
WT IN 10.10/ OUT 10.10
VIS IN 34/ OUT 34

MD 8456'
INC 90.4°
AZM 268.0°
TVD 5702.19'

CHK: lgy-crm, sbbiky, sft, mot-wxy tex, v
calc
MRL: gy-gybrn, sbbiky-sbply, sft, rthy-mot
tex, v calc, calc incl, tr bent w/ pyr, tr inoc

CHK: lgy-crm, sbbiky, sft, mot-wxy tex, v
calc
MRL: gy-gybrn, sbbiky-sbply, sft, rthy-mot
tex, v calc, calc incl, tr bent w/ pyr, tr inoc





API 300

4800 40

WT IN 10.10/ OUT 10.10

VIS IN 34/ OUT 34

154

WT IN 10.10/ OUT 10.10

VIS IN 34/ OUT 34

161

WT IN 10.10+ OUT 10.10+

VIS IN 34/ OUT 34

MD 8551'
INC 90.0°
AZM 269.8°
TVD 5701.86'

MD 8646'
INC 88.4°
AZM 269.1°
TVD 5703.19'

MD 8740'
INC 88.6°
AZM 269.8°
TVD 5705.65'

CHK: ilgy-crm, sbblky, sft, mot-wxy tex, v
calc
MRL: gy-gybrn, sbblky-sbply, sft, rthy-mot
tex, v calc, calc incl, tr bent w/ pyr, tr inoc

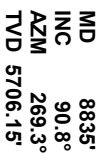
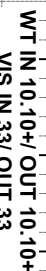
CHK: ilgy-crm, sbblky, sft, mot-wxy tex, v
calc
MRL: gy-gybrn, sbblky-sbply, sft, rthy-mot
tex, v calc, calc incl, tr bent w/ pyr, tr inoc

CHK: ilgy-crm, sbblky, sft, mot-wxy tex, v
calc
MRL: gy-gybrn, sbblky-sbply, sft, rthy-mot
tex, v calc, calc incl, tr bent w/ pyr, tr inoc

CHK: ilgy-crm, sbblky, sft, mot-wxy tex, v
calc
MRL: gy-gybrn, sbblky-sbply, sft, rthy-mot
tex, v calc, calc incl, tr bent w/ pyr, tr inoc

CHK: ilgy-crm, sbblky, sft, mot-wxy tex, v
calc
MRL: gy-gybrn, sbblky-sbply, sft, rthy-mot
tex, v calc, calc incl, tr bent w/ pyr, tr inoc



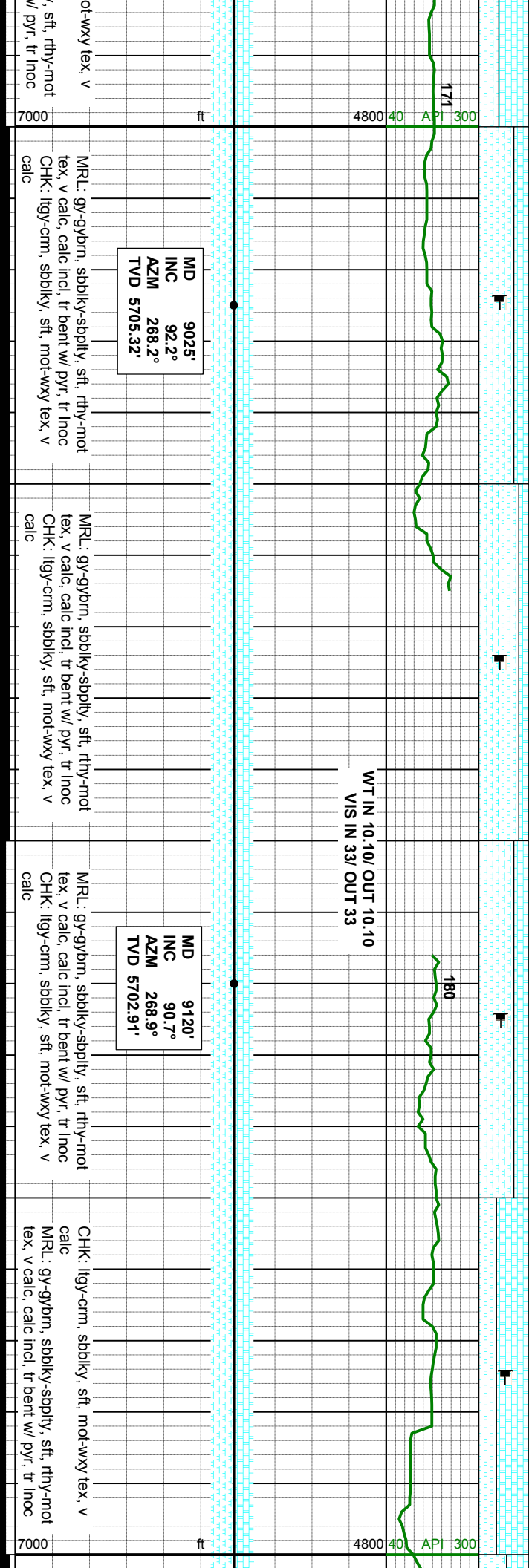
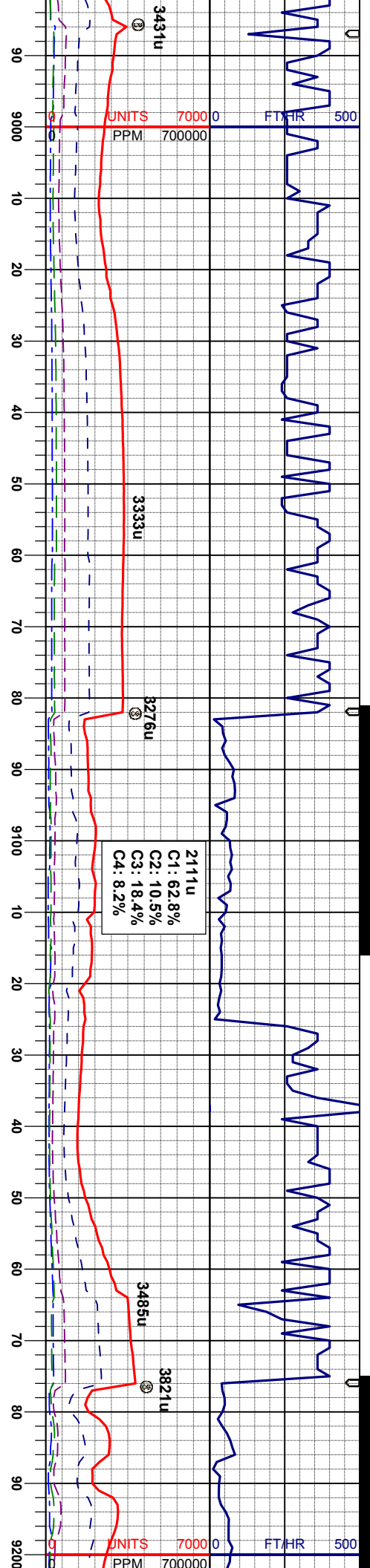


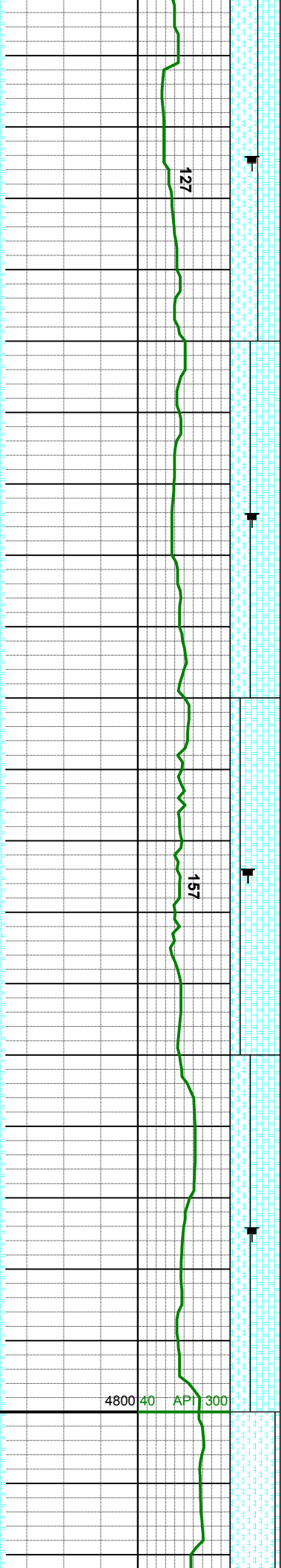
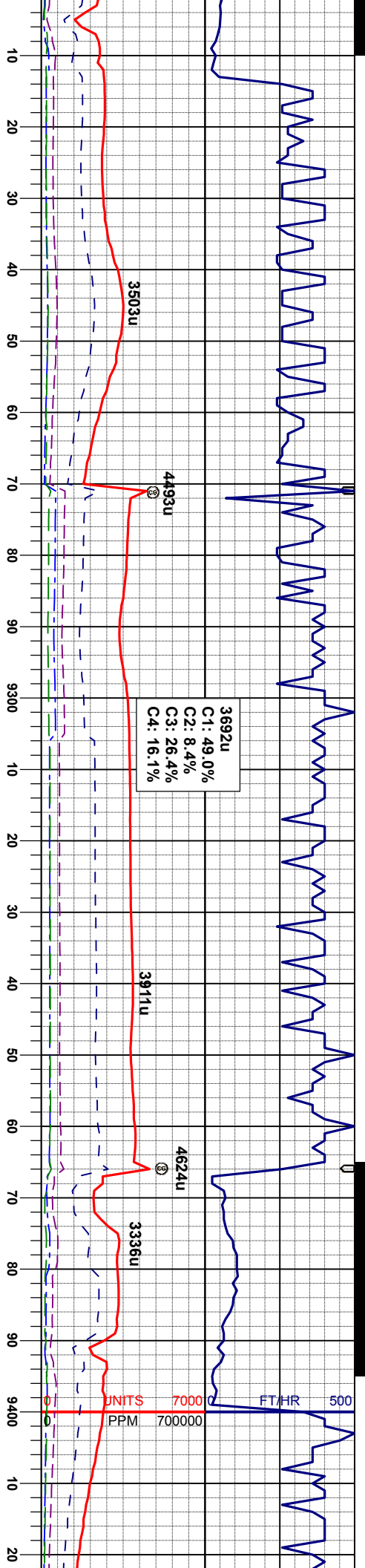
CHK: itgy-crm, sbblky, sft, mot-wxy tex, v calc
MRL: gy-gybrn, sbblky-sbply, sft, rthy-mot tex, v calc, calc incl, tr bent w/ pyr, tr inoc

CHK: lly-erm, sbblky, sft, mof-wxy tex, v calc
 MRL: gy-gybrn, sbblky-sbply, sft, rthy-mot
 tex, v calc, calc incl, tr bent w/ pyr, tr inoc

CHK: ltgy-crm, sbblky, sft, mot-wxy tex, v calc
MRL: gy-gybm, sbblky-sbply, sft, rthy-mot tex, v calc, calc incl, tr bent w/ pyr, tr inoc

CHK: lty-crm, sbblky, sft, m
calc
MRL: gy-gybrn, sbblky-sbplty
tex, v calc, calc incl, tr bent v





MD 9215'
INC 88.2°
AZM 268.6°
TVD 5703.82

MRL: gy-gybrn, sbbiky-sbply, sft, rthy-mot
tex, v calc, calc incl, tr bent w/ pyr, tr inoc
CHK: lgy-crm, sbbiky, sft, mot-wxy tex, v
calc

CHK: lgy-crm, sbbiky, sft, mot-wxy tex, v
calc
MRL: gy-gybrn, sbbiky-sbply, sft, rthy-mot
tex, v calc, calc incl, tr bent w/ pyr, tr inoc

MD 9310'
INC 90.5°
AZM 268.2°
TVD 5704.90

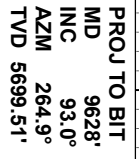
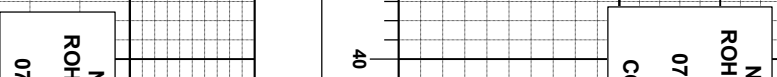
CHK: lgy-crm, sbbiky, sft, mot-wxy tex, v
calc
MRL: gy-gybrn, sbbiky-sbply, sft, rthy-mot
tex, v calc, calc incl, tr bent w/ pyr, tr inoc

CHK: lgy-crm, sbbiky, sft, mot-wxy tex, v
calc
MRL: gy-gybrn, sbbiky-sbply, sft, rthy-mot
tex, v calc, calc incl, tr bent w/ pyr, tr inoc

MD 9405'
INC 89.3°
AZM 266.8°
TVD 5705.07

MRL: gy-gybrn, sb
tex, v calc, calc inc
CHK: lgy-crm, sbb





MOBILE ENERGY INC
N STATE LD04-66HN
TD @ 9628' MD
09/20/13 @ 12:38 AM
THANK YOU
PLUMBINE LOGGING

IOBLE ENERGY INC N STATE LD04-66HN TD @ 9628' MD /09/2013 @ 12:38 AM			
---	--	--	--