

The Road to Excellence Starts with Safety

Sold To #: 300721	Ship To #: 3202887	Quote #:	Sales Order #: 900927021
Customer: WPX ENERGY ROCKY MOUNTAIN LLC-EBUS	Customer Rep: Wilson, W.C		
Well Name: RWF	Well #: 911-28D	API/UWI #: 05-045-22176	
Field: RULISON	City (SAP): RIFLE	County/Parish: Garfield	State: Colorado
Lat: N 39.506 deg. OR N 39 deg. 30 min. 20.311 secs.	Long: W 107.898 deg. OR W -108 deg. 6 min. 8.068 secs.		
Contractor: NABORS 574	Rig/Platform Name/Num: NABORS 574		
Job Purpose: Cement Surface Casing			
Well Type: Development Well	Job Type: Cement Surface Casing		
Sales Person: MAYO, MARK	Srv Supervisor: KEANE, JOHN	MBU ID Emp #: 486519	

Job Personnel

HES Emp Name	Exp Hrs	Emp #	HES Emp Name	Exp Hrs	Emp #	HES Emp Name	Exp Hrs	Emp #
BANKS, BRENT A	0.0	371353	KEANE, JOHN Donovon	0.0	486519	LYNGSTAD, FREDRICK D	0.0	403742
MCINTOSH, ROBERT	0.0	547652	SOMOZA, RAMON Manuel	0.0	554555			

Equipment

HES Unit #	Distance-1 way	HES Unit #	Distance-1 way	HES Unit #	Distance-1 way	HES Unit #	Distance-1 way
10551730C	60 mile	10784080	60 mile	10951245	60 mile	11021972	60 mile
11360871	60 mile	11360883	60 mile	11808841	60 mile		

Job Hours

Date	On Location Hours	Operating Hours	Date	On Location Hours	Operating Hours	Date	On Location Hours	Operating Hours

TOTAL Total is the sum of each column separately

Job					Job Times			
Formation Name					Date	Time	Time Zone	
Formation Depth (MD)	Top		Bottom		Called Out	26 - Nov - 2013	05:30	MST
Form Type		BHST			On Location	26 - Nov - 2013	09:30	MST
Job depth MD	1750.6 ft	Job Depth TVD	1750.6 ft		Job Started	26 - Nov - 2013	15:40	MST
Water Depth		Wk Ht Above Floor	3. ft		Job Completed	26 - Nov - 2013	16:55	MST
Perforation Depth (MD)	From		To		Departed Loc	26 - Nov - 2013	18:10	MST

Well Data

Description	New / Used	Max pressure pslg	Size in	ID in	Weight lbm/ft	Thread	Grade	Top MD ft	Bottom MD ft	Top TVD ft	Bottom TVD ft

Tools and Accessories

Type	Size	Qty	Make	Depth	Type	Size	Qty	Make	Depth	Type	Size	Qty	Make
Guide Shoe					Packer					Top Plug			
Float Shoe					Bridge Plug					Bottom Plug			
Float Collar					Retainer					SSR plug set			
Insert Float										Plug Container			
Stage Tool										Centralizers			

Miscellaneous Materials

Gelling Agt		Conc		Surfactant		Conc		Acid Type		Qty		Conc	%
Treatment Fld		Conc		Inhibitor		Conc		Sand Type		Size		Qty	

Fluid Data

Stage/Plug #: 1													
Fluid #	Stage Type	Fluid Name	Qty	Qty uom	Mixing Density lbm/gal	Yield ft ³ /sk	Mix Fluid Gal/sk	Rate bbl/min	Total Mix Fluid Gal/sk				

Stage/Plug #: 1													
Fluid #	Stage Type	Fluid Name	Qty	Qty uom	Mixing Density lbm/gal	Yield ft ³ /sk	Mix Fluid Gal/sk	Rate bbl/min	Total Mix Fluid Gal/sk				

Stage/Plug #: 1									
1	Fresh Water Spacer		20.00	bbl	.	.0	.0	.0	
2	VersaCem GJ1 Lead Cement	VARICEM (TM) CEMENT (452009)	275.0	sacks	12.3	2.38	13.75		13.75
	13.75 Gal	FRESH WATER							
3	VersaCem GJ1 Tail Cement	VARICEM (TM) CEMENT (452009)	160.0	sacks	12.8	2.11	11.75		11.75
	11.75 Gal	FRESH WATER							
4	Fresh Water Displacement		134.00	bbl	.	.0	.0	.0	
Calculated Values		Pressures		Volumes					
Displacement		Shut In: Instant		Lost Returns		Cement Slurry		Pad	
Top Of Cement		5 Min		Cement Returns		Actual Displacement		Treatment	
Frac Gradient		15 Min		Spacers		Load and Breakdown		Total Job	
Rates									
Circulating		Mixing		Displacement		Avg. Job			
Cement Left In Pipe	Amount	0 ft	Reason	Shoe Joint					
Frac Ring # 1 @	ID	Frac ring # 2 @	ID	Frac Ring # 3 @	ID	Frac Ring # 4 @	ID		
The Information Stated Herein Is Correct				Customer Representative Signature					

The Road to Excellence Starts with Safety

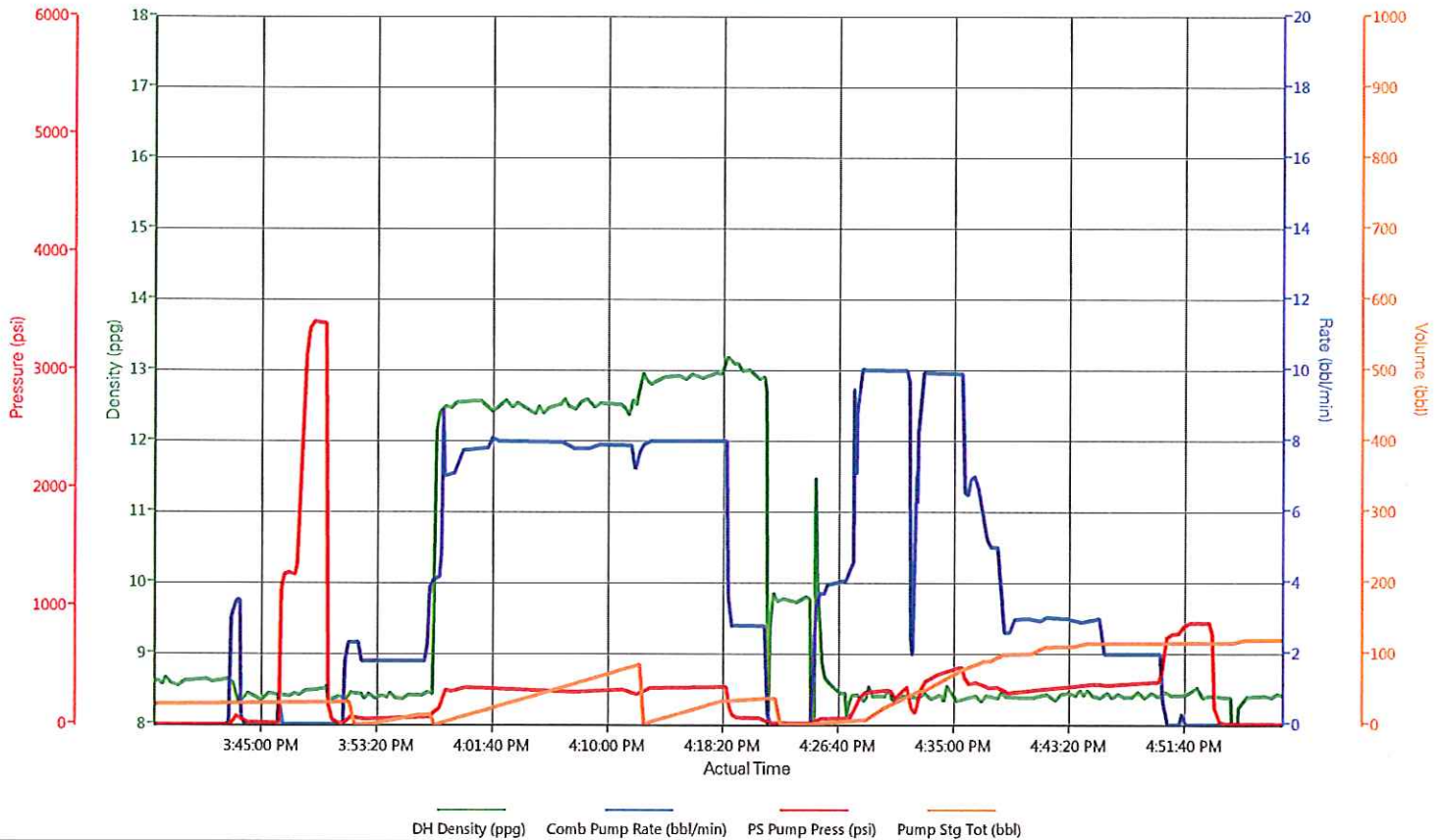
Sold To #: 300721	Ship To #: 3202887	Quote #:	Sales Order #: 900927021
Customer: WPX ENERGY ROCKY MOUNTAIN LLC-EBUS	Customer Rep: Wilson, W.C		
Well Name: RWF	Well #: 911-28D	API/UWI #: 05-045-22176	
Field: RULISON	City (SAP): RIFLE	County/Parish: Garfield	State: Colorado
Legal Description:			
Lat: N 39.506 deg. OR N 39 deg. 30 min. 20.311 secs.		Long: W 107.898 deg. OR W -108 deg. 6 min. 8.068 secs.	
Contractor: NABORS 574	Rig/Platform Name/Num: NABORS 574		
Job Purpose: Cement Surface Casing			Ticket Amount:
Well Type: Development Well	Job Type: Cement Surface Casing		
Sales Person: MAYO, MARK	Srv Supervisor: KEANE, JOHN	MBU ID Emp #: 486519	

Activity Description	Date/Time	Cht #	Rate bbl/min	Volume bbl		Pressure psig		Comments
				Stage	Total	Tubing	Casing	
Call Out	11/26/2013 05:30							
Pre-Convoy Safety Meeting	11/26/2013 07:20							WITH HES
Arrive At Loc	11/26/2013 09:30							RIG PULLING DRILL PIPE UPON HES ARRIVAL
Assessment Of Location Safety Meeting	11/26/2013 10:00							WITH HES
Pre-Rig Up Safety Meeting	11/26/2013 11:00							WITH HES
Rig-Up Equipment	11/26/2013 11:10							
Pre-Job Safety Meeting	11/26/2013 15:25							WITH HES, WPX, AND NABORS 577
Start Job	11/26/2013 15:40							TD 1762 FT, TP 1750.6 FT, SHOE 43.68 FT, MWT 10.0 LB/GAL, HOLE 13.5 IN, CSG 9.625 IN 32.3 LB/FT H-40, RIG CIRCULATING AT 8 BBL/MIN, PASON GAS AT 4 UNITS
Pump Water	11/26/2013 15:42		2	2			110.0	FILL LINES
Test Lines	11/26/2013 15:46							LOW TEST AT 1300 PSI, HIGH TEST AT 3400 PSI, PRESSURE HOLDING
Pump Spacer	11/26/2013 15:50		4	20			105.0	FRESH WATER
Activity Description	Date/Time	Cht #	Rate bbl/min	Volume bbl		Pressure psig		Comments
				Stage	Total	Tubing	Casing	

Cementing Job Log

Pump Lead Cement	11/26/2013 15:57		8	116			303.0	MIXED AT 12.3 LB/GAL, 275 SKS, 2.38 FT3/SK, 13.75 GAL/SK, DENSITY VERIFIED USING PRESSURIZED MUD SCALES
Pump Tail Cement	11/26/2013 16:12		8	60			312.0	MIXED AT 12.8 LB/GAL, 160 SKS, 2.11 FT3/SK, 11.75 GAL/SK, DENSITY VERIFIED USING PRESSURIZED MUD SCALES
Shutdown	11/26/2013 16:21							
Drop Plug	11/26/2013 16:23							PLUG LAUNCHED
Pump Displacement	11/26/2013 16:24		10	100			478.0	FRESH WATER
Slow Rate	11/26/2013 16:38		2	34			270.0	SLOWED AT 100 BBL AWAY
Bump Plug	11/26/2013 16:50		2				370.0	PLUG BUMPED AT CALCULATED DISPLACEMENT
Check Floats	11/26/2013 16:54						875.0	FLOATS HOLDING, .75 BBL RETURNED TO THE TRUCK
End Job	11/26/2013 16:55							GOOD CIRCULATION THROUGHOUT THE JOB, NO ADD HOURS CHARGED, NO DERRICK CHARGE, RIG USED 80 LBS OF SUGAR, PIPE WAS STATIC THROUGHOUT THE JOB, 20 BBL CEMENT CIRCULATED TO SURFACE
Post-Job Safety Meeting (Pre Rig-Down)	11/26/2013 17:00							WITH HES
Rig-Down Equipment	11/26/2013 17:15							
Pre-Convoy Safety Meeting	11/26/2013 18:00							WITH HES
Crew Leave Location	11/26/2013 18:10							
Comment	11/26/2013 18:11							THANKS FOR USING HALLIBURTON, JOHN KEANE AND CREW

WPX - RWF-911-28D - 9.625 IN SURFACE



▼ **HALLIBURTON** | iCem® Service

Created: 2013-11-26 12:08:03, Version: 2.0.606

Edit

Customer: WPX ENERGY ROCKY MOUNTAIN LLC-
EBUS

Job Date: 11/26/2013 12:10:18 PM

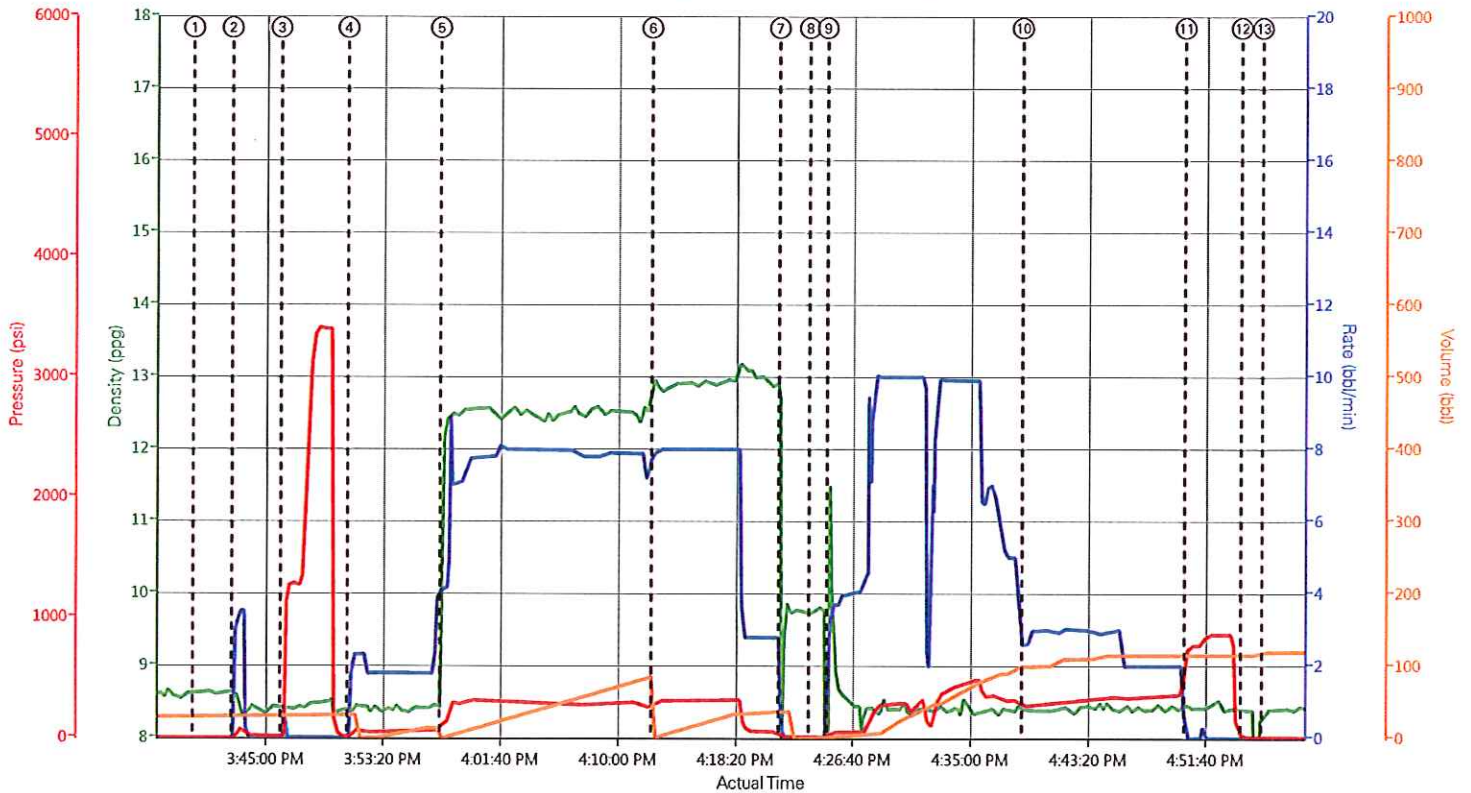
Well: RWF-911-28D

Representative: W.C. WILSON

Sales Order #: 900927021

ELITE 2 : BRENT BANKS / ROBERT MCINTOSH

WPX - RWF-911-28D - 9.625 IN SURFACE



DH Density (ppg) Comb Pump Rate (bbl/min) PS Pump Press (psi) Pump Stg Tot (bbl)

- | | | | |
|--|---------------------------------------|---------------------------------------|----------------------------|
| ① Start Job 8.63;0;2;29.12 | ⑤ Pump Lead Cement 11.78;4.1;116;0 | ⑨ Pump Displacement 11.51;2.2;26;1.74 | ⑬ End Job 8.36;0;10;119.29 |
| ② Fill Lines 8.6;3;6;29.12 | ⑥ Pump Tail Cement 12.99;7.9;297;1.07 | ⑫ Slow Rate 8.43;2.6;273;99.88 | |
| ③ Test Lines 8.43;0.9;18;32.26 | ⑦ Shutdown 5.37;0.1;30;36.83 | ⑭ Bump Plug 8.47;0;736;115.14 | |
| ④ Fresh Water Spacer 8.33;1.7;18;32.26 | ⑧ Drop Top Plug 9.75;0;11;0.83 | ⑮ Check Floats 8.35;0;14;115.14 | |

HALLIBURTON | iCem® Service

Created: 2013-11-26 12:03:03, Version: 2.0.606

Edit

Customer: WPX ENERGY ROCKY MOUNTAIN LLC-EBUS

Job Date: 11/26/2013 12:10:18 PM

Well: RWF-911-28D

Representative: W.C. WILSON

Sales Order #: 900927021

ELITE 2 : BRENT BANKS / ROBERT MCINTOSH