

**ENSIGN UNITED STATES DRILLING EBUSI
PO BOX 17805 - DO NOT MAIL
DENVER, Colorado**

SRC Leffler 24-26NHZ

Ensign 17

Post Job Summary **Cement Surface Casing**

Date Prepared: September 3, 2013
Version: 1

Service Supervisor: FANTASIA, JOSEPH

Submitted by: ESTENSSORO, SEBASTIAN

HALLIBURTON

HALLIBURTON

Wellbore Geometry

Job Tubulars					MD	
Type	Description	Size in	ID in	Wt lbm/ft	Top ft	Bottom ft
Open Hole Section	Open Hole		13.500		0.00	608.00
Casing	Surface Casing	9.63	8.921	36.00	0.00	577.00

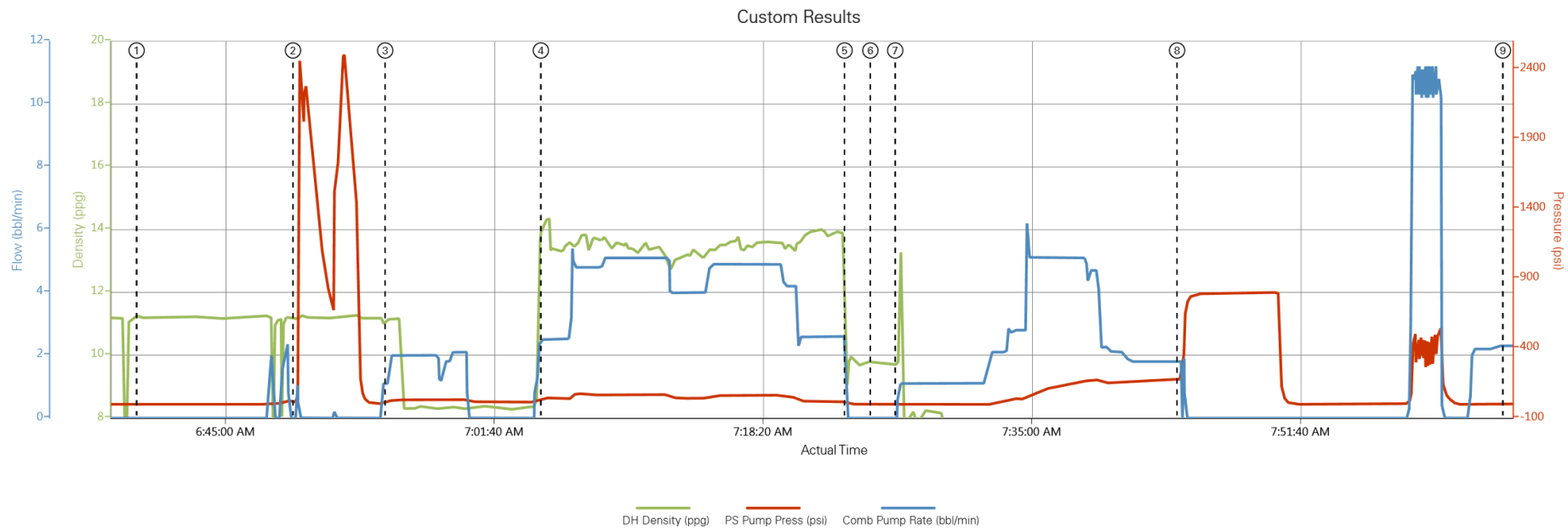
HALLIBURTON

Pumping Schedule

Stage /Plug #	Fluid #	Fluid Type	Fluid Name	Surface Density lbm/gal	Avg Rate bbl/min	Surface Volume	Downhole Volume
1	1	Spacer	Fresh Water Spacer	8.33	4.00	10.0 bbl	10.0 bbl
1	2	Cement Slurry	SwiftCem B2	13.40	5.00	250.0 sacks	250.0 sacks
1	3	Cement Slurry	Top Out Cement	15.80	6.00	42.0 bbl	42.0 bbl

HALLIBURTON

Data Acquisition



- ① Start Job
- ② Test Lines
- ③ Pump Spacer 1
- ④ Pump Cement
- ⑤ Shutdown
- ⑥ Drop Top Plug
- ⑦ Pump Displacement
- ⑧ Bump Plug
- ⑨ End Job

▲ Halliburton | iCem Service®

Created: 2013-08-23 02:30:17 , Version: 1.4.96

Edit

Service Supervisor Reports

Job Log

Date/Time	Chart #	Activity Code	Pump Rate	Cum Vol	Pump		Pressure (psig)	Comments
08/23/2013 03:00		Arrive at Location from Service Center						ARRIVE AT LOCATION
08/23/2013 03:15		Assessment Of Location Safety Meeting						PERFORM SITE ASSESSMENT AND HAZARD HUNT WITH CREW PRIOR TO SPOTTING EQUIPMENT AND RIGGING UP.
08/23/2013 06:39		Start Job						PERFORM PRE-JOB SAFETY MEETING WITH ALL PRESENT PERSONNEL PRIOR TO JOB
08/23/2013 06:49		Test Lines					1700.0	PRESSURE TEST LINES TO 2000 PSI.
08/23/2013 06:54		Pump Spacer 1	4	10			25.0	PUMP 10 BBLS WATER
08/23/2013 07:04		Pump Cement	5	79			45.0	250SKS SWIFTCEM MIXED AT 14.2 PPG USING RIG WATER
08/23/2013 07:23		Shutdown						
08/23/2013 07:25		Drop Top Plug						PLUG PRELOADED
08/23/2013 07:26		Pump Displacement	6	42			120.0	GOOD RETURNS THROUGHOUT. CEMENT TO SURFACE AT 32 BBLS INTO 42 BBLS TOTAL DISPLACEMENT. APPROX 10 BBLS CEMENT TO SURFACE.
08/23/2013 07:44		Bump Plug	3				177.0	PLUG LANDED AT 177 PSI. PRESSURE BROUGHT 500 PSI OVER TO 750 PSI AND HELD FOR 5 MIN.
08/23/2013 07:49		Check Floats						FLOATS HELD
08/23/2013 08:00		End Job						PERFORM PRE RIG DOWN SAFETY MEETING

The Road to Excellence Starts with Safety

Sold To #: 301256	Ship To #: 3096381	Quote #:	Sales Order #: 900688159
Customer: ENSIGN UNITED STATES DRILLING EBUSI		Customer Rep: Martinez, Mike	
Well Name: SRC Leffler		Well #: 24-26NHZ	API/UWI #:
Field: EATON	City (SAP): EATON	County/Parish: Weld	State: Colorado
Contractor: Ensign		Rig/Platform Name/Num: Ensign 17	
Job Purpose: Cement Surface Casing			
Well Type: Development Well		Job Type: Cement Surface Casing	
Sales Person: FLING, MATTHEW	Srvc Supervisor: FANTASIA, JOSEPH		MBU ID Emp #: 485445

Job Personnel

HES Emp Name	Exp Hrs	Emp #	HES Emp Name	Exp Hrs	Emp #	HES Emp Name	Exp Hrs	Emp #
FANTASIA, JOSEPH Brandon	6.0	485445	GRIFFITHS, ZACHARY	6.0	123456	HERNANDEZ, ROY	6.0	123456
HINKLE, BRADLEY Dean	6.0	512123	JOHNSON, BRANDON	6.0	123456			

Equipment

HES Unit #	Distance-1 way	HES Unit #	Distance-1 way	HES Unit #	Distance-1 way	HES Unit #	Distance-1 way
11036301	40 mile	11410470C	40 mile	11566182	40 mile		

Job Hours

Date	On Location Hours	Operating Hours	Date	On Location Hours	Operating Hours	Date	On Location Hours	Operating Hours
TOTAL			Total is the sum of each column separately					

Job

Formation Name					Date	Time	Time Zone
Formation Depth (MD)	Top		Bottom		Called Out	22 - Aug - 2013	11:00 MST
Form Type		BHST			On Location	23 - Aug - 2013	03:00 MST
Job depth MD	577. ft	Job Depth TVD	577. ft		Job Started	23 - Aug - 2013	06:30 MST
Water Depth		Wk Ht Above Floor			Job Completed	23 - Aug - 2013	08:15 MST
Perforation Depth (MD)	From		To		Departed Loc	23 - Aug - 2013	09:00 MST

Well Data

Description	New / Used	Max pressure psig	Size in	ID in	Weight lbm/ft	Thread	Grade	Top MD ft	Bottom MD ft	Top TVD ft	Bottom TVD ft
Open Hole				13.5				.	608.		
Surface Casing	Unknown		9.625	8.921	36.		J-55	.	577.		

Sales/Rental/3rd Party (HES)

Description	Qty	Qty uom	Depth	Supplier
CENTRALIZER-9-5/8"-CSG-12 1/4"-HINGED	5	EA		
CLR,FLT,9-5/8 8RD 29.3-40PPF,2-3/4	1	EA		
SHOE,GID,9-5/8 8RD	1	EA		
KIT,HALL WELD-A	1	EA		
COLLAR-STOP-9 5/8"-FRICTION-HINGED	1	EA		
PLUG,CMTG,TOP,9 5/8,HWE,8.16 MIN/9.06 MA	1	EA		
MILEAGE FOR CEMENTING CREW,ZI	60	MI		

Tools and Accessories													
Type	Size	Qty	Make	Depth	Type	Size	Qty	Make	Depth	Type	Size	Qty	Make
Guide Shoe					Packer					Top Plug			
Float Shoe					Bridge Plug					Bottom Plug			
Float Collar					Retainer					SSR plug set			
Insert Float										Plug Container			
Stage Tool										Centralizers			
Miscellaneous Materials													
Gelling Agt			Conc		Surfactant			Conc		Acid Type		Qty	Conc %
Treatment Fld			Conc		Inhibitor			Conc		Sand Type		Size	Qty
Fluid Data													
Stage/Plug #: 1													
Fluid #	Stage Type	Fluid Name				Qty	Qty uom	Mixing Density lbm/gal	Yield ft3/sk	Mix Fluid Gal/sk	Rate bbl/min	Total Mix Fluid Gal/sk	
1	Fresh Water Spacer					10.00	bbl	8.33			4.0		
2	SwiftCem B2	SWIFTCem (TM) SYSTEM (452990)				250.0	sacks	13.4	1.79	9.51	5.0	9.51	
	0.25 lbm	POLY-E-FLAKE (101216940)											
	9.51 Gal	FRESH WATER											
3	Displacement					42.0	bbl				6.0		
	4.989 Gal	FRESH WATER											
Calculated Values		Pressures		Volumes									
Displacement		Shut In: Instant			Lost Returns			Cement Slurry			Pad		
Top Of Cement		5 Min			Cement Returns			Actual Displacement			Treatment		
Frac Gradient		15 Min			Spacers			Load and Breakdown			Total Job		
Rates													
Circulating		Mixing			Displacement			Avg. Job					
Cement Left In Pipe	Amount	0 ft	Reason	Shoe Joint									
Frac Ring # 1 @	ID		Frac ring # 2 @	ID		Frac Ring # 3 @	ID		Frac Ring # 4 @	ID			
The Information Stated Herein Is Correct					Customer Representative Signature								

