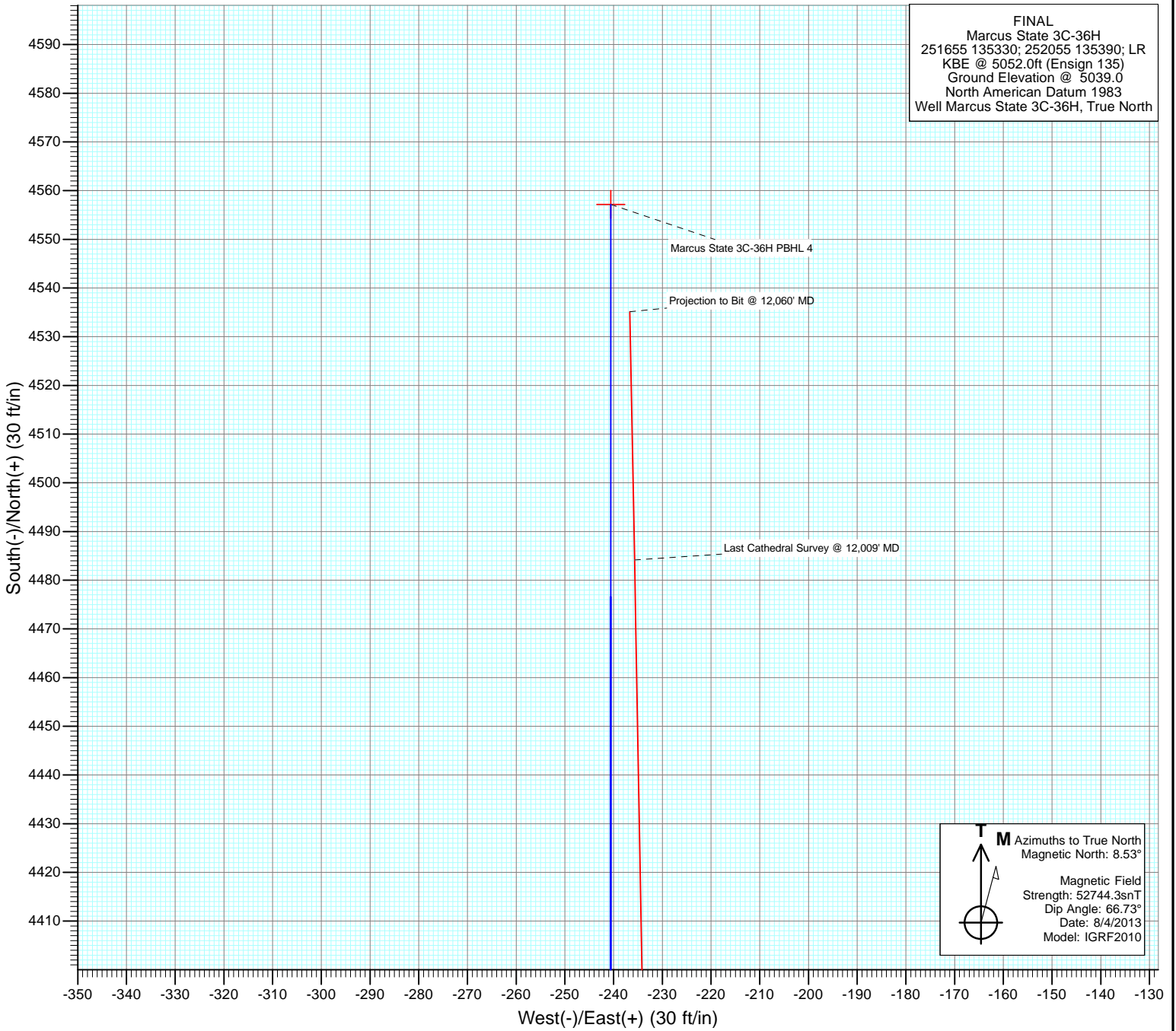
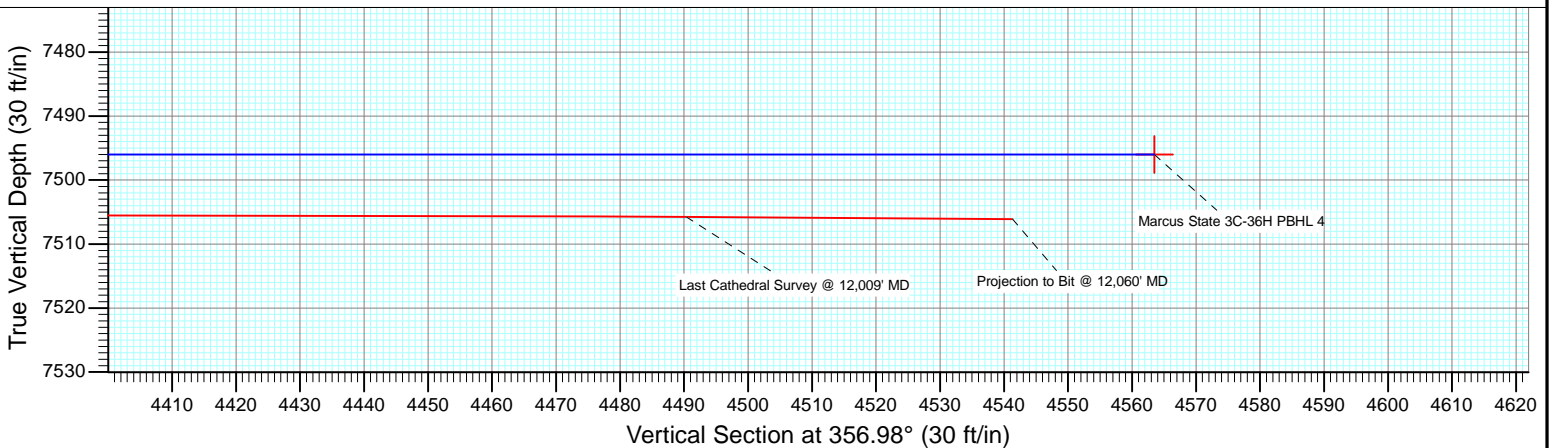


FINAL
 Marcus State 3C-36H
 251655 135330; 252055 135390; LR
 KBE @ 5052.0ft (Ensign 135)
 Ground Elevation @ 5039.0
 North American Datum 1983
 Well Marcus State 3C-36H, True North



M Azimuths to True North
 Magnetic North: 8.53°
 Magnetic Field
 Strength: 52744.3snT
 Dip Angle: 66.73°
 Date: 8/4/2013
 Model: IGRF2010



Cathedral Energy Services

Survey Report

Company: EnCana Oil & Gas (USA) Inc	Local Co-ordinate Reference: Well Marcus State 3C-36H
Project: DJ Wattenberg	TVD Reference: KBE @ 5052.0ft (Ensign 135)
Site: S36 T2N-R66W (Marcus State)	MD Reference: KBE @ 5052.0ft (Ensign 135)
Well: Marcus State 3C-36H	North Reference: True
Wellbore: HZ	Survey Calculation Method: Minimum Curvature
Design: FINAL	Database: USA EDM 5000 Multi Users DB

Project DJ Wattenberg		
Map System: US State Plane 1983	System Datum: Mean Sea Level	
Geo Datum: North American Datum 1983		
Map Zone: Colorado Northern Zone		

Site S36 T2N-R66W (Marcus State)				
Site Position:	Northing: 1,275,942.66 ft	Latitude: 40.088280		
From: Lat/Long	Easting: 3,215,403.58 ft	Longitude: -104.730140		
Position Uncertainty: 0.0 ft	Slot Radius: 13.200 in	Grid Convergence: 0.50 °		

Well Marcus State 3C-36H				
Well Position	+N/-S 0.0 ft	Northing: 1,275,942.81 ft	Latitude: 40.088280	
	+E/-W 0.0 ft	Easting: 3,215,423.16 ft	Longitude: -104.730070	
Position Uncertainty	0.0 ft	Wellhead Elevation: ft	Ground Level: 5,039.0 ft	

Wellbore HZ					
Magnetics	Model Name	Sample Date	Declination (°)	Dip Angle (°)	Field Strength (nT)
	IGRF2010	8/4/2013	8.53	66.73	52,744

Design FINAL				
Audit Notes:				
Version: 1.0	Phase: ACTUAL	Tie On Depth: 0.0		
Vertical Section:	Depth From (TVD) (ft)	+N/-S (ft)	+E/-W (ft)	Direction (°)
	0.0	0.0	0.0	356.98

Survey Program		Date 9/9/2013		
From (ft)	To (ft)	Survey (Wellbore)	Tool Name	Description
142.0	12,060.0	Survey #1 (HZ)	Geolink MWD	Geolink MWD

Survey									
Measured Depth (ft)	Inclination (°)	Azimuth (°)	Vertical Depth (ft)	+N/-S (ft)	+E/-W (ft)	Vertical Section (ft)	Dogleg Rate (°/100ft)	Build Rate (°/100ft)	Formations / Comments
0.0	0.00	0.00	0.0	0.0	0.0	0.0	0.00	0.00	
142.0	0.80	253.00	142.0	-0.3	-0.9	-0.2	0.56	0.56	
234.0	0.60	251.30	234.0	-0.6	-2.0	-0.5	0.22	-0.22	
326.0	0.50	272.30	326.0	-0.8	-2.9	-0.6	0.24	-0.11	
418.0	0.30	301.80	418.0	-0.6	-3.5	-0.4	0.31	-0.22	
510.0	1.10	251.10	510.0	-0.8	-4.5	-0.5	1.02	0.87	
602.0	2.30	232.40	601.9	-2.2	-6.8	-1.8	1.42	1.30	
694.0	2.80	205.80	693.8	-5.3	-9.3	-4.9	1.38	0.54	
787.0	1.90	216.70	786.8	-8.6	-11.2	-8.0	1.08	-0.97	
878.0	2.70	205.90	877.7	-11.8	-13.0	-11.1	1.00	0.88	
970.0	3.60	199.80	969.6	-16.4	-14.9	-15.6	1.04	0.98	
1,062.0	3.20	209.80	1,061.4	-21.4	-17.2	-20.4	0.78	-0.43	
1,154.0	2.90	214.20	1,153.3	-25.5	-19.8	-24.5	0.41	-0.33	

Cathedral Energy Services

Survey Report

Company:	EnCana Oil & Gas (USA) Inc	Local Co-ordinate Reference:	Well Marcus State 3C-36H
Project:	DJ Wattenberg	TD Reference:	KBE @ 5052.0ft (Ensign 135)
Site:	S36 T2N-R66W (Marcus State)	MD Reference:	KBE @ 5052.0ft (Ensign 135)
Well:	Marcus State 3C-36H	North Reference:	True
Wellbore:	HZ	Survey Calculation Method:	Minimum Curvature
Design:	FINAL	Database:	USA EDM 5000 Multi Users DB

Survey									
Measured Depth (ft)	Inclination (°)	Azimuth (°)	Vertical Depth (ft)	+N/-S (ft)	+E/-W (ft)	Vertical Section (ft)	Dogleg Rate (°/100ft)	Build Rate (°/100ft)	Formations / Comments
1,178.0	2.80	210.80	1,177.2	-26.5	-20.4	-25.4	0.82	-0.42	
1,286.0	2.00	213.10	1,285.1	-30.4	-22.8	-29.1	0.75	-0.74	
1,378.0	2.60	206.50	1,377.1	-33.6	-24.6	-32.3	0.71	0.65	
1,470.0	3.20	229.50	1,468.9	-37.1	-27.5	-35.6	1.41	0.65	
1,563.0	4.40	228.50	1,561.7	-41.2	-32.1	-39.4	1.29	1.29	
1,654.0	4.20	218.40	1,652.5	-46.1	-36.8	-44.1	0.86	-0.22	
1,746.0	4.20	218.80	1,744.2	-51.4	-41.0	-49.1	0.03	0.00	
1,838.0	4.00	215.50	1,836.0	-56.6	-45.0	-54.2	0.34	-0.22	
1,930.0	3.80	213.30	1,927.8	-61.8	-48.5	-59.1	0.27	-0.22	
2,025.0	3.70	211.60	2,022.6	-67.0	-51.9	-64.2	0.16	-0.11	
2,120.0	3.30	212.50	2,117.4	-71.9	-54.9	-68.9	0.42	-0.42	
2,214.0	2.90	215.20	2,211.3	-76.2	-57.8	-73.0	0.45	-0.43	
2,309.0	2.60	217.20	2,306.2	-79.8	-60.5	-76.5	0.33	-0.32	
2,404.0	3.40	216.90	2,401.0	-83.8	-63.4	-80.3	0.84	0.84	
2,499.0	2.30	228.80	2,495.9	-87.3	-66.6	-83.7	1.31	-1.16	
2,593.0	3.30	223.20	2,589.8	-90.5	-69.8	-86.7	1.10	1.06	
2,688.0	2.20	237.60	2,684.7	-93.5	-73.3	-89.5	1.36	-1.16	
2,783.0	2.40	228.30	2,779.6	-95.8	-76.3	-91.6	0.45	0.21	
2,878.0	4.10	212.50	2,874.5	-100.0	-79.6	-95.6	2.01	1.79	
2,972.0	2.70	213.80	2,968.3	-104.7	-82.6	-100.2	1.49	-1.49	
3,067.0	3.80	214.30	3,063.1	-109.1	-85.6	-104.5	1.16	1.16	
3,162.0	3.20	213.80	3,158.0	-113.9	-88.9	-109.1	0.63	-0.63	
3,257.0	3.50	217.40	3,252.8	-118.4	-92.1	-113.4	0.39	0.32	
3,351.0	3.80	231.00	3,346.6	-122.7	-96.3	-117.4	0.97	0.32	
3,446.0	2.90	224.00	3,441.4	-126.4	-100.4	-120.9	1.04	-0.95	
3,541.0	2.20	243.40	3,536.4	-128.9	-103.7	-123.3	1.16	-0.74	
3,636.0	3.00	221.80	3,631.3	-131.6	-107.0	-125.8	1.32	0.84	
3,730.0	2.90	210.40	3,725.1	-135.5	-109.8	-129.5	0.63	-0.11	
3,825.0	3.20	210.80	3,820.0	-139.8	-112.4	-133.7	0.32	0.32	
3,920.0	4.40	208.70	3,914.8	-145.3	-115.5	-139.0	1.27	1.26	
4,015.0	3.30	203.90	4,009.6	-151.0	-118.4	-144.5	1.21	-1.16	
4,110.0	4.00	209.80	4,104.4	-156.4	-121.1	-149.8	0.84	0.74	
4,204.0	4.30	220.70	4,198.1	-161.9	-125.1	-155.1	0.90	0.32	
4,299.0	4.50	225.30	4,292.9	-167.2	-130.0	-160.1	0.43	0.21	
4,394.0	5.40	222.20	4,387.5	-173.1	-135.7	-165.8	0.99	0.95	
4,489.0	2.80	220.30	4,482.2	-178.2	-140.2	-170.6	2.74	-2.74	
4,584.0	3.50	220.00	4,577.1	-182.2	-143.6	-174.4	0.74	0.74	
4,678.0	4.10	213.90	4,670.9	-187.2	-147.3	-179.2	0.77	0.64	
4,773.0	4.40	219.70	4,765.6	-192.8	-151.5	-184.6	0.55	0.32	
4,868.0	4.40	206.70	4,860.4	-198.9	-155.5	-190.4	1.05	0.00	
4,962.0	3.90	203.20	4,954.1	-205.0	-158.3	-196.4	0.60	-0.53	
5,057.0	2.70	202.20	5,049.0	-210.1	-160.5	-201.3	1.26	-1.26	
5,152.0	0.80	140.00	5,143.9	-212.7	-160.9	-203.9	2.56	-2.00	
5,246.0	1.60	221.10	5,237.9	-214.2	-161.3	-205.4	1.78	0.85	
5,341.0	3.20	220.40	5,332.8	-217.2	-163.9	-208.2	1.68	1.68	
5,436.0	4.30	219.20	5,427.6	-222.0	-167.9	-212.8	1.16	1.16	
5,531.0	2.90	217.90	5,522.4	-226.6	-171.6	-217.3	1.48	-1.47	
5,625.0	3.10	225.40	5,616.3	-230.3	-174.9	-220.7	0.47	0.21	
5,720.0	3.90	219.70	5,711.1	-234.6	-178.8	-224.8	0.92	0.84	
5,815.0	3.70	215.70	5,805.9	-239.5	-182.6	-229.6	0.35	-0.21	
5,910.0	2.70	226.80	5,900.7	-243.6	-186.0	-233.4	1.23	-1.05	
6,004.0	3.10	238.50	5,994.6	-246.4	-189.8	-236.1	0.76	0.43	
6,099.0	3.30	228.80	6,089.5	-249.6	-194.1	-239.0	0.61	0.21	

Cathedral Energy Services

Survey Report

Company:	EnCana Oil & Gas (USA) Inc	Local Co-ordinate Reference:	Well Marcus State 3C-36H
Project:	DJ Wattenberg	TD Reference:	KBE @ 5052.0ft (Ensign 135)
Site:	S36 T2N-R66W (Marcus State)	MVD Reference:	KBE @ 5052.0ft (Ensign 135)
Well:	Marcus State 3C-36H	North Reference:	True
Wellbore:	HZ	Survey Calculation Method:	Minimum Curvature
Design:	FINAL	Database:	USA EDM 5000 Multi Users DB

Survey									
Measured Depth (ft)	Inclination (°)	Azimuth (°)	Vertical Depth (ft)	+N/-S (ft)	+E/-W (ft)	Vertical Section (ft)	Dogleg Rate (°/100ft)	Build Rate (°/100ft)	Formations / Comments
6,194.0	3.60	209.40	6,184.3	-253.9	-197.6	-243.2	1.26	0.32	
6,289.0	3.40	209.80	6,279.1	-259.0	-200.5	-248.1	0.21	-0.21	
6,383.0	3.60	215.20	6,373.0	-263.8	-203.5	-252.7	0.41	0.21	
6,478.0	3.20	213.10	6,467.8	-268.5	-206.7	-257.2	0.44	-0.42	
6,573.0	3.60	218.20	6,562.6	-273.0	-210.0	-261.6	0.53	0.42	
6,667.0	2.90	212.90	6,656.5	-277.4	-213.1	-265.7	0.81	-0.74	
6,762.0	2.90	222.60	6,751.4	-281.1	-216.1	-269.4	0.52	0.00	
6,825.0	3.60	221.80	6,814.3	-283.8	-218.4	-271.9	1.11	1.11	
6,857.0	3.60	219.20	6,846.2	-285.3	-219.8	-273.3	0.51	0.00	
6,888.0	2.50	252.10	6,877.2	-286.3	-221.0	-274.2	6.53	-3.55	
6,920.0	5.00	286.20	6,909.1	-286.1	-223.0	-274.0	10.15	7.81	
6,952.0	9.10	297.60	6,940.8	-284.6	-226.6	-272.2	13.48	12.81	
6,983.0	12.90	305.90	6,971.3	-281.4	-231.6	-268.8	13.25	12.26	
7,015.0	15.40	317.80	7,002.3	-276.1	-237.3	-263.2	11.95	7.81	
7,046.0	17.50	329.60	7,032.0	-269.1	-242.5	-255.9	12.70	6.77	
7,078.0	20.00	337.20	7,062.3	-259.9	-247.0	-246.5	10.91	7.81	
7,110.0	21.90	344.50	7,092.2	-249.1	-250.7	-235.5	10.08	5.94	
7,141.0	25.10	351.00	7,120.7	-237.0	-253.3	-223.3	13.27	10.32	
7,173.0	27.80	356.20	7,149.3	-222.8	-254.9	-209.1	11.11	8.44	
7,204.0	29.40	1.90	7,176.5	-208.0	-255.1	-194.3	10.20	5.16	
7,236.0	32.20	2.90	7,204.0	-191.7	-254.4	-178.0	8.89	8.75	
7,267.0	35.10	3.00	7,229.8	-174.5	-253.5	-160.9	9.36	9.35	
7,299.0	38.80	2.40	7,255.4	-155.3	-252.6	-141.8	11.62	11.56	
7,331.0	41.80	1.70	7,279.8	-134.6	-251.9	-121.1	9.48	9.37	
7,362.0	44.60	1.20	7,302.4	-113.4	-251.3	-100.0	9.10	9.03	
7,394.0	47.40	1.70	7,324.6	-90.4	-250.7	-77.0	8.82	8.75	
7,425.0	50.50	2.80	7,345.0	-67.0	-249.8	-53.8	10.35	10.00	
7,457.0	53.90	4.20	7,364.6	-41.8	-248.3	-28.7	11.17	10.62	
7,489.0	57.70	3.50	7,382.6	-15.4	-246.5	-2.4	12.01	11.87	
7,520.0	61.30	2.20	7,398.3	11.3	-245.2	24.2	12.16	11.61	
7,552.0	65.10	1.50	7,412.7	39.8	-244.3	52.6	12.03	11.87	
7,583.0	67.80	1.30	7,425.1	68.2	-243.6	81.0	8.73	8.71	
7,615.0	69.90	1.10	7,436.7	98.1	-242.9	110.7	6.59	6.56	
7,655.0	73.80	2.20	7,449.1	136.0	-241.8	148.6	10.09	9.75	
7,671.0	74.80	2.30	7,453.4	151.4	-241.2	163.9	6.28	6.25	
7,703.0	76.70	2.40	7,461.3	182.4	-240.0	194.8	5.95	5.94	
7,734.0	79.50	2.50	7,467.7	212.7	-238.7	225.0	9.04	9.03	
7,766.0	83.70	2.90	7,472.4	244.3	-237.2	256.5	13.18	13.12	
7,797.0	86.20	3.40	7,475.1	275.2	-235.5	287.2	8.22	8.06	
7,829.0	87.20	2.30	7,477.0	307.1	-233.9	319.0	4.64	3.12	
7,923.0	88.50	0.20	7,480.5	401.0	-231.8	412.6	2.63	1.38	
8,018.0	90.20	0.20	7,481.6	496.0	-231.5	507.5	1.79	1.79	
8,113.0	90.60	0.30	7,480.9	591.0	-231.1	602.3	0.43	0.42	
8,207.0	92.40	0.80	7,478.4	684.9	-230.2	696.1	1.99	1.91	
8,302.0	91.30	359.60	7,475.4	779.9	-229.9	790.9	1.71	-1.16	
8,397.0	90.10	359.40	7,474.2	874.9	-230.7	885.8	1.28	-1.26	
8,492.0	89.80	359.70	7,474.3	969.9	-231.4	980.7	0.45	-0.32	
8,587.0	89.20	359.50	7,475.1	1,064.9	-232.1	1,075.6	0.67	-0.63	
8,681.0	89.40	0.10	7,476.3	1,158.8	-232.4	1,169.5	0.67	0.21	
8,776.0	86.70	356.90	7,479.5	1,253.7	-234.9	1,264.4	4.41	-2.84	
8,839.0	87.80	356.30	7,482.5	1,316.6	-238.6	1,327.3	1.99	1.75	
8,902.0	88.40	355.60	7,484.6	1,379.4	-243.1	1,390.3	1.46	0.95	
8,966.0	90.50	355.50	7,485.2	1,443.2	-248.1	1,454.2	3.28	3.28	

Cathedral Energy Services

Survey Report

Company:	EnCana Oil & Gas (USA) Inc	Local Co-ordinate Reference:	Well Marcus State 3C-36H
Project:	DJ Wattenberg	TVD Reference:	KBE @ 5052.0ft (Ensign 135)
Site:	S36 T2N-R66W (Marcus State)	MD Reference:	KBE @ 5052.0ft (Ensign 135)
Well:	Marcus State 3C-36H	North Reference:	True
Wellbore:	HZ	Survey Calculation Method:	Minimum Curvature
Design:	FINAL	Database:	USA EDM 5000 Multi Users DB

Survey									
Measured Depth (ft)	Inclination (°)	Azimuth (°)	Vertical Depth (ft)	+N/-S (ft)	+E/-W (ft)	Vertical Section (ft)	Dogleg Rate (°/100ft)	Build Rate (°/100ft)	Formations / Comments
9,029.0	90.20	356.70	7,484.8	1,506.0	-252.3	1,517.2	1.96	-0.48	
9,092.0	90.20	356.60	7,484.6	1,568.9	-256.0	1,580.2	0.16	0.00	
9,155.0	89.90	356.00	7,484.6	1,631.8	-260.1	1,643.2	1.06	-0.48	
9,218.0	88.50	355.70	7,485.5	1,694.6	-264.7	1,706.2	2.27	-2.22	
9,281.0	89.00	358.90	7,486.8	1,757.5	-267.6	1,769.2	5.14	0.79	
9,344.0	91.90	0.90	7,486.3	1,820.5	-267.7	1,832.1	5.59	4.60	
9,439.0	88.90	0.80	7,485.7	1,915.5	-266.3	1,926.8	3.16	-3.16	
9,534.0	90.50	2.30	7,486.2	2,010.4	-263.8	2,021.5	2.31	1.68	
9,629.0	88.40	2.80	7,487.1	2,105.3	-259.5	2,116.1	2.27	-2.21	
9,723.0	88.10	3.10	7,489.9	2,199.2	-254.7	2,209.5	0.45	-0.32	
9,818.0	90.10	2.50	7,491.4	2,294.0	-250.0	2,304.0	2.20	2.11	
9,912.0	88.00	2.10	7,493.0	2,387.9	-246.3	2,397.6	2.27	-2.23	
10,007.0	88.90	2.30	7,495.6	2,482.8	-242.6	2,492.2	0.97	0.95	
10,102.0	89.90	2.00	7,496.6	2,577.8	-239.1	2,586.8	1.10	1.05	
10,197.0	90.10	2.30	7,496.6	2,672.7	-235.5	2,681.4	0.38	0.21	
10,291.0	90.20	1.30	7,496.3	2,766.6	-232.6	2,775.1	1.07	0.11	
10,386.0	91.00	1.00	7,495.3	2,861.6	-230.6	2,869.8	0.90	0.84	
10,480.0	90.70	0.70	7,493.9	2,955.6	-229.3	2,963.6	0.45	-0.32	
10,575.0	89.30	359.70	7,493.9	3,050.6	-228.9	3,058.4	1.81	-1.47	
10,670.0	89.00	0.60	7,495.3	3,145.6	-228.7	3,153.3	1.00	-0.32	
10,764.0	88.50	0.10	7,497.4	3,239.6	-228.1	3,247.1	0.75	-0.53	
10,859.0	87.60	0.00	7,500.6	3,334.5	-228.0	3,341.9	0.95	-0.95	
10,954.0	87.40	359.50	7,504.8	3,429.4	-228.4	3,436.7	0.57	-0.21	
11,049.0	87.80	359.50	7,508.7	3,524.3	-229.3	3,531.5	0.42	0.42	
11,143.0	90.70	358.30	7,510.0	3,618.3	-231.1	3,625.4	3.34	3.09	
11,238.0	91.20	359.80	7,508.4	3,713.3	-232.6	3,720.4	1.66	0.53	
11,333.0	90.60	0.30	7,506.9	3,808.2	-232.6	3,815.2	0.82	-0.63	
11,427.0	91.00	0.10	7,505.6	3,902.2	-232.2	3,909.0	0.48	0.43	
11,522.0	89.30	0.40	7,505.3	3,997.2	-231.8	4,003.9	1.82	-1.79	
11,617.0	89.60	0.40	7,506.3	4,092.2	-231.1	4,098.7	0.32	0.32	
11,711.0	90.10	359.70	7,506.5	4,186.2	-231.1	4,192.6	0.92	0.53	
11,806.0	90.50	359.00	7,506.0	4,281.2	-232.1	4,287.5	0.85	0.42	
11,901.0	90.10	359.00	7,505.5	4,376.2	-233.8	4,382.4	0.42	-0.42	
11,995.0	89.70	359.00	7,505.7	4,470.2	-235.4	4,476.4	0.43	-0.43	
12,009.0	89.60	358.90	7,505.8	4,484.2	-235.7	4,490.3	1.01	-0.71	Last Cathedral Survey @ 12,009' MD
12,060.0	89.60	358.90	7,506.1	4,535.1	-236.7	4,541.3	0.00	0.00	Projection to Bit @ 12,060' MD

Cathedral Energy Services

Survey Report

Company: EnCana Oil & Gas (USA) Inc	Local Co-ordinate Reference: Well Marcus State 3C-36H
Project: DJ Wattenberg	TVD Reference: KBE @ 5052.0ft (Ensign 135)
Site: S36 T2N-R66W (Marcus State)	MD Reference: KBE @ 5052.0ft (Ensign 135)
Well: Marcus State 3C-36H	North Reference: True
Wellbore: HZ	Survey Calculation Method: Minimum Curvature
Design: FINAL	Database: USA EDM 5000 Multi Users DB

Targets									
Target Name	Dip Angle	Dip Dir.	TVD	+N/-S	+E/-W	Northing	Easting	Latitude	Longitude
- hit/miss target	(°)	(°)	(ft)	(ft)	(ft)	(ft)	(ft)		
- Shape									
Marcus State 3C-36H 1C - actual wellpath misses target center by 9.1ft at 10339.0ft MD (7496.0 TVD, 2814.6 N, -231.5 E) - Point	0.00	0.00	7,496.0	2,814.8	-240.6	1,278,755.43	3,215,158.15	40.096007	-104.730930
Marcus State 3C-36H PI - actual wellpath misses target center by 24.5ft at 12060.0ft MD (7506.1 TVD, 4535.1 N, -236.7 E) - Point	0.00	0.00	7,496.0	4,557.1	-240.6	1,280,497.69	3,215,143.03	40.100790	-104.730930
Marcus State 3C-36H PI - actual wellpath misses target center by 24.5ft at 12060.0ft MD (7506.1 TVD, 4535.1 N, -236.7 E) - Point	0.00	0.00	7,496.0	4,557.1	-240.6	1,280,497.69	3,215,143.03	40.100790	-104.730930
Marcus State 3C-36H PI - actual wellpath misses target center by 32.1ft at 12060.0ft MD (7506.1 TVD, 4535.1 N, -236.7 E) - Point	0.00	0.00	7,483.0	4,557.1	-240.6	1,280,497.69	3,215,143.03	40.100790	-104.730930
Marcus State 3C-36H 9 ² - actual wellpath misses target center by 31.8ft at 9338.4ft MD (7486.5 TVD, 1814.9 N, -267.8 E) - Point	0.00	0.00	7,470.0	1,814.8	-240.6	1,277,755.47	3,215,166.82	40.093262	-104.730930

Design Annotations					
Measured Depth	Vertical Depth	Local Coordinates			
(ft)	(ft)	+N/-S (ft)	+E/-W (ft)	Comment	
12,009.0	7,505.8	4,484.2	-235.7	Last Cathedral Survey @ 12,009' MD	
12,060.0	7,506.1	4,535.1	-236.7	Projection to Bit @ 12,060' MD	

Checked By: _____ Approved By: _____ Date: _____