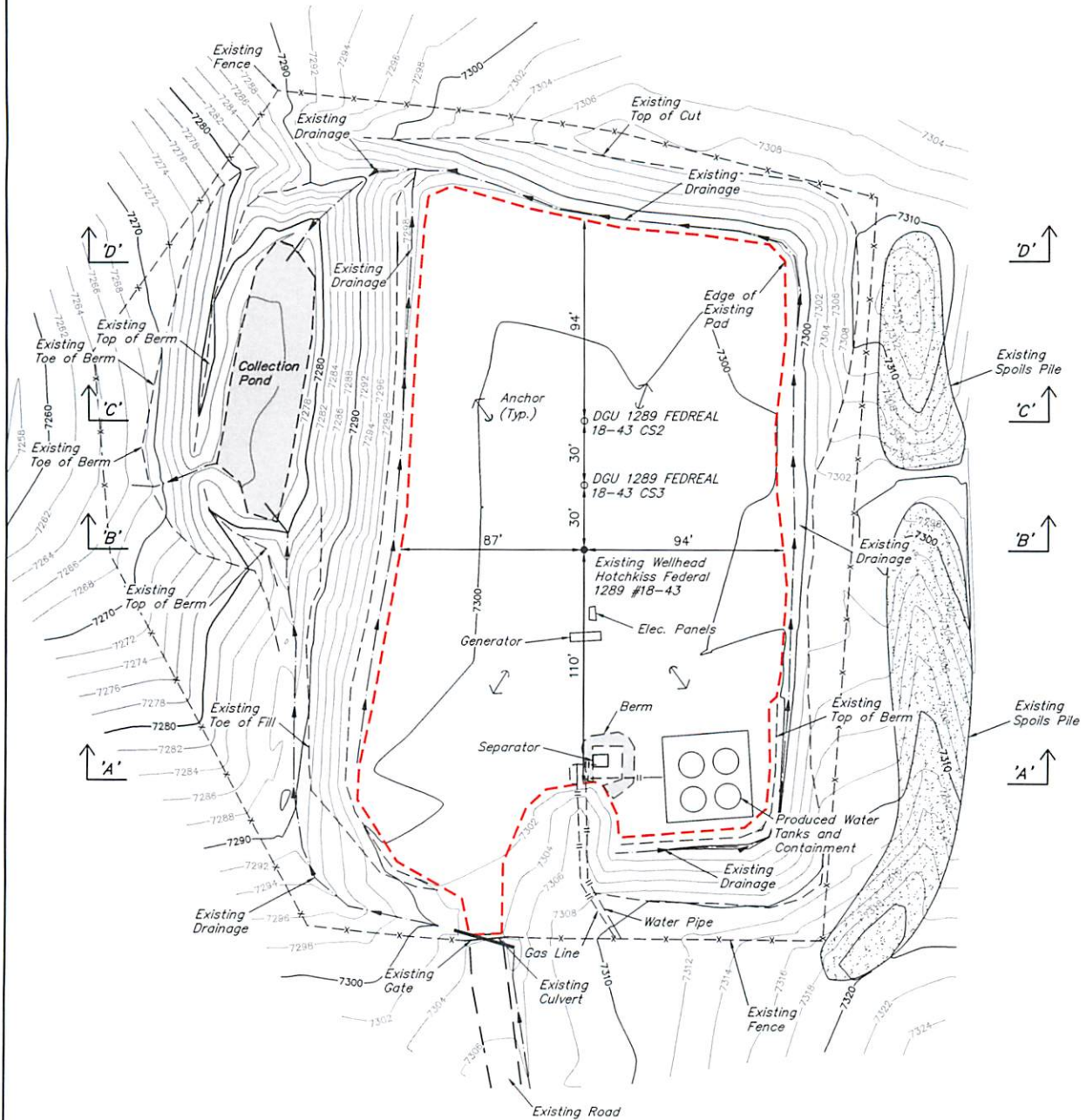
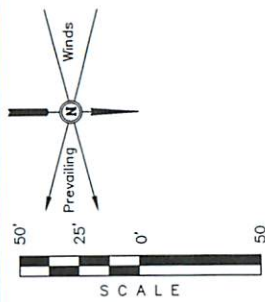


**GUNNISON ENERGY CORPORATION**  
**AS-BUILT SITE PLAN FOR**  
**DGU 1289 FEDERAL 18-43 CS3 & CS2**  
**ON EXISTING HOTCHKISS FEDERAL 1289 18-43 PAD**  
**SECTION 18, T12S, R89W, 6th P.M.**  
**NE 1/4 SE 1/4**

**FIGURE #1**

SCALE: 1" = 50'  
 DATE: 10-02-13  
 DRAWN BY: M.D.  
 REVISED: 10-06-13  
 REVISED: 12-13-13



**APPROXIMATE ACREAGE**  
 WELL SITE DISTURBANCE  
 WITHIN FENCE AREA = ± 2.792

FINISHED GRADE ELEV. AT #18-43 LOC. STAKE = 7303.4'

**UINTAH ENGINEERING & LAND SURVEYING**  
 85 So. 200 East • Vernal, Utah 84078 • (435) 789-1017