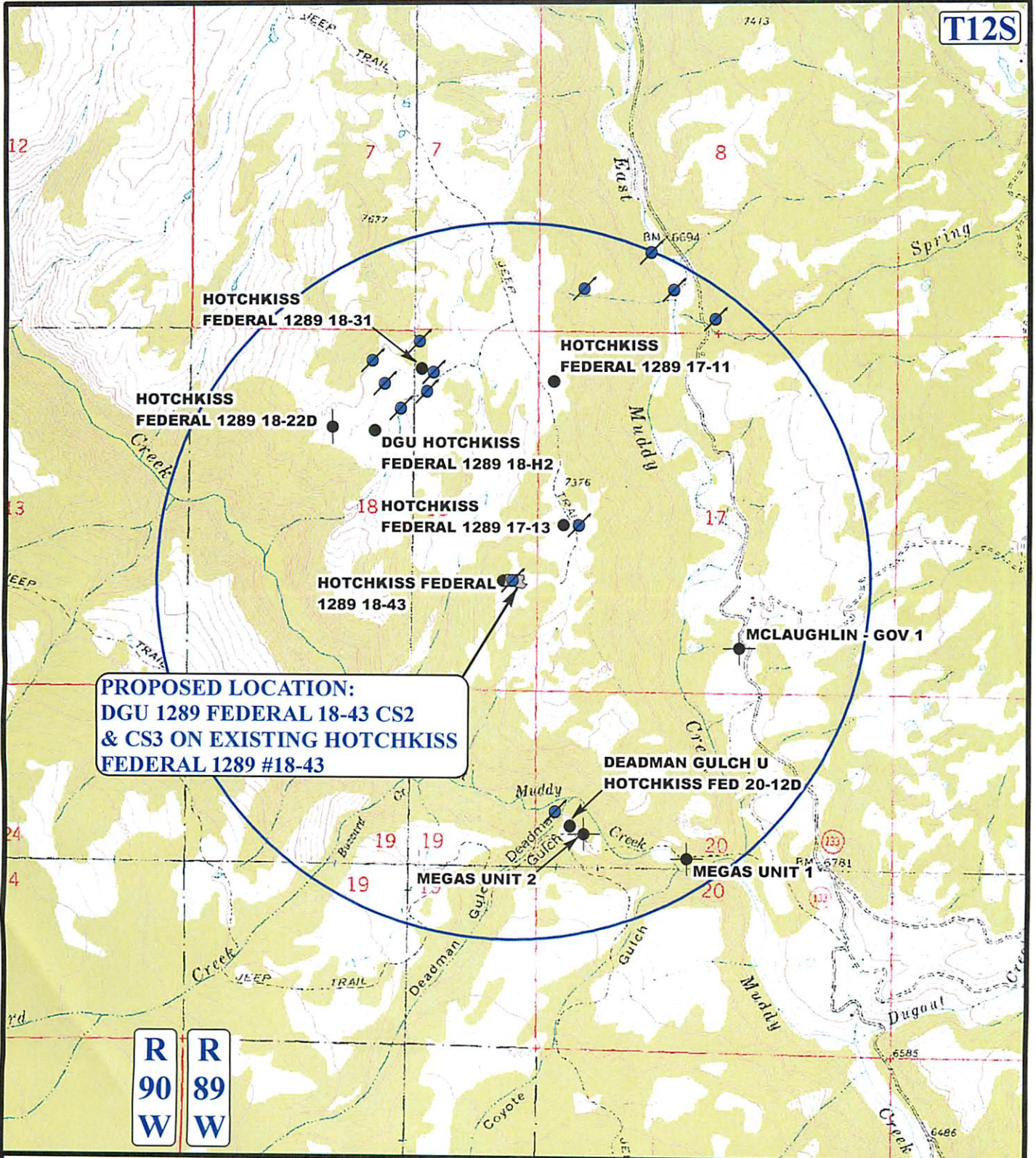


T12S



PROPOSED LOCATION:
DGU 1289 FEDERAL 18-43 CS2
& CS3 ON EXISTING HOTCHKISS
FEDERAL 1289 #18-43

LEGEND:

- | | |
|-------------------|--------------------------|
| ○ DISPOSAL WELLS | ● WATER/MONITORING WELLS |
| ● PRODUCING WELLS | ● ABANDONED WELLS |
| ● SHUT IN WELLS | ● TEMPORARILY ABANDONED |



GUNNISON ENERGY CORPORATION

DGU 1289 FEDERAL 18-43 CS2 & CS3 ON
EXISTING HOTCHKISS FEDERAL 1289 #18-43
SECTION 18, T12S, R89W, 6th P.M.
NE 1/4 SE 1/4



Utah Engineering & Land Surveying
 85 South 200 East Vernal, Utah 84078
 (435) 789-1017 * FAX (435) 789-1813

TOPOGRAPHIC
MAP

SCALE: 1"=2000' DRAWN BY: J.M.F. REVISED: 01-10-14

12 **13** **13**
 MONTH DAY YEAR

