

GUNNISON ENERGY CORPORATION
DGU 1289 FEDERAL 18-43 CS2 & CS3
ON EXISTING HOTCHKISS FEDERAL 1289 18-43 PAD
LOCATED IN GUNNISON COUNTY, COLORADO
SECTION 18, T12S, R89W, 6th P.M.



PHOTO: VIEW OF LOCATION STAKES

CAMERA ANGLE: NORTHERLY

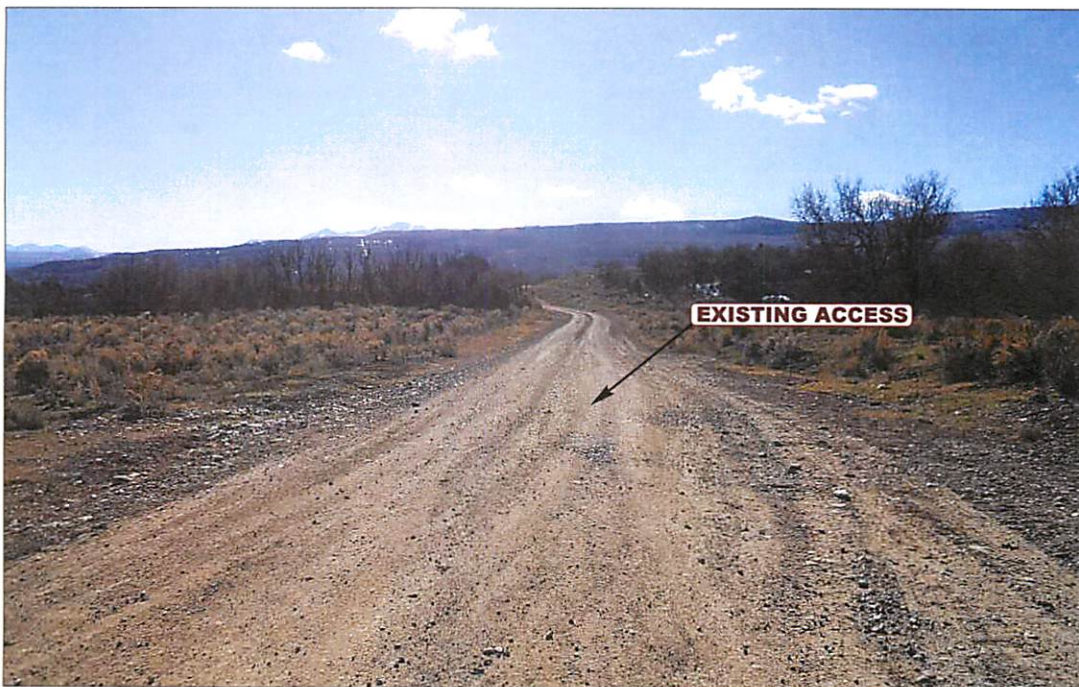


PHOTO: VIEW FROM BEGINNING OF EXISTING ACCESS

CAMERA ANGLE: SOUTHWESTERLY



UELS Uintah Engineering & Land Surveying
 85 South 200 East Vernal, Utah 84078
 (435) 789-1017 * FAX (435) 789-1813

LOCATION PHOTOS

12	13	13
MONTH	DAY	YEAR

PHOTO
P1

TAKEN BY: B.B.	DRAWN BY: J.M.F.	REVISED: 00-00-00
----------------	------------------	-------------------

GUNNISON ENERGY CORPORATION
DGU 1289 FEDERAL 18-43 CS2 & CS3
ON EXISTING HOTCHKISS FEDERAL 1289 18-43 PAD
LOCATED IN GUNNISON COUNTY, COLORADO
SECTION 18, T12S, R89W, 6th P.M.



PHOTO: VIEW OF LOCATION STAKES

CAMERA ANGLE: NORTHERLY

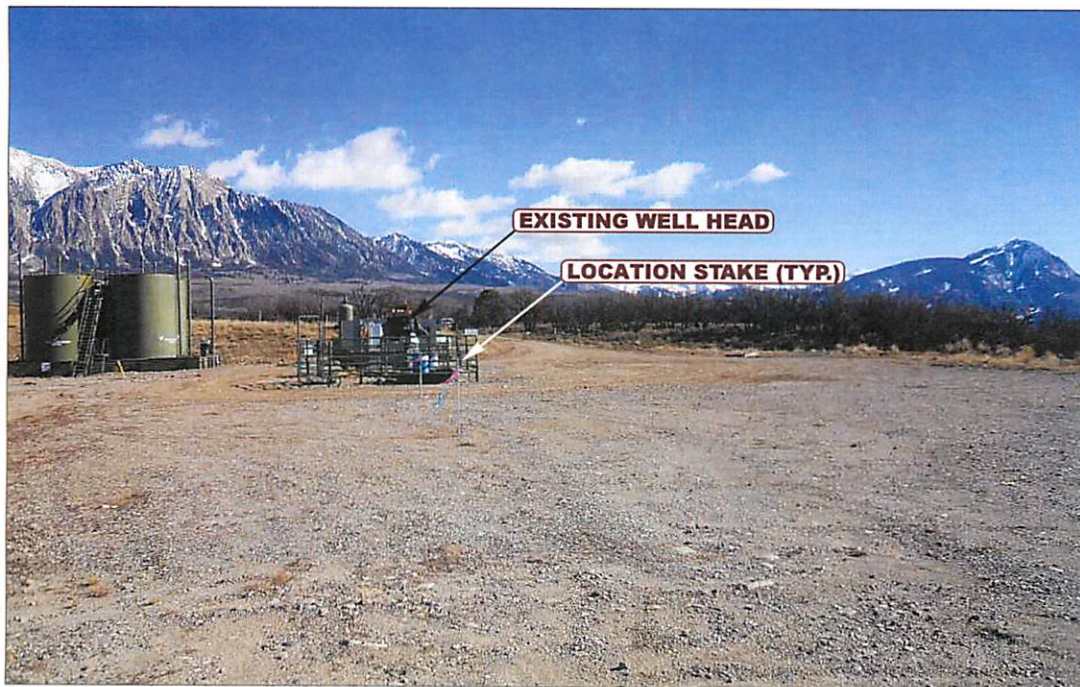


PHOTO: VIEW OF EXISTING WELL HEAD & LOCATION STAKES

CAMERA ANGLE: EASTERLY



- Since 1964 -

U
E
L
S Uintah Engineering & Land Surveying
 85 South 200 East Vernal, Utah 84078
 (435) 789-1017 * FAX (435) 789-1813

LOCATION PHOTOS

12	13	13
MONTH	DAY	YEAR

PHOTO
P2

TAKEN BY: B.B.	DRAWN BY: J.M.F.	REVISED: 00-00-00
----------------	------------------	-------------------

GUNNISON ENERGY CORPORATION
DGU 1289 FEDERAL 18-43 CS2 & CS3
ON EXISTING HOTCHKISS FEDERAL 1289 18-43 PAD
LOCATED IN GUNNISON COUNTY, COLORADO
SECTION 18, T12S, R89W, 6th P.M.



PHOTO: VIEW OF LOCATION STAKES

CAMERA ANGLE: SOUTHERLY

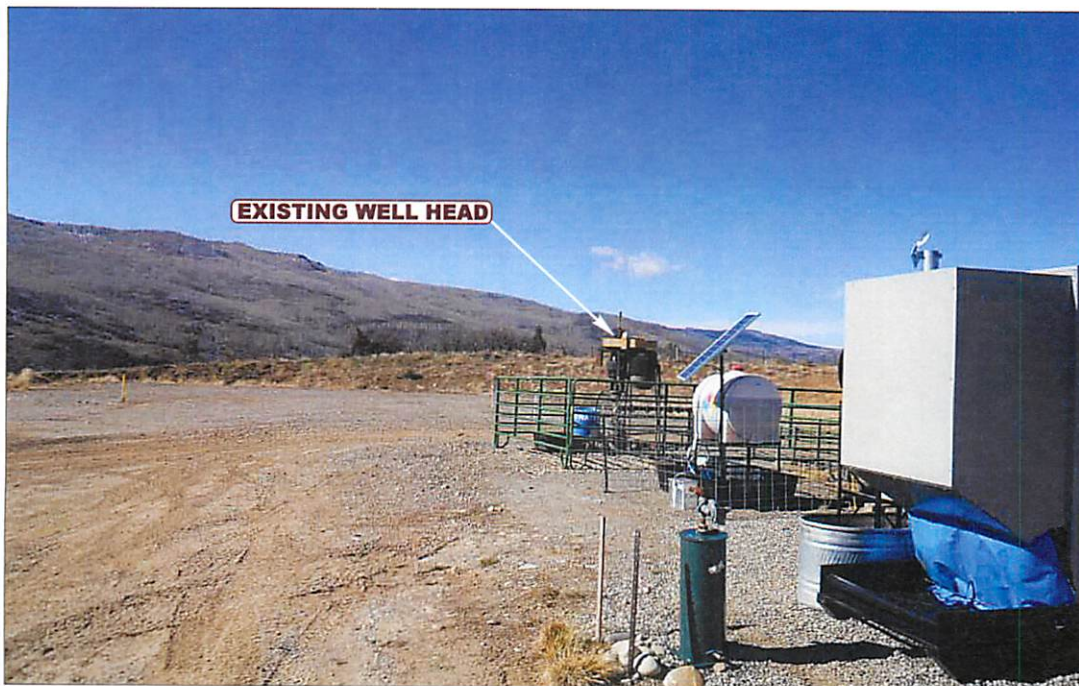


PHOTO: VIEW OF EXISTING WELL HEAD

CAMERA ANGLE: WESTERLY



- Since 1964 -

U&LS Uintah Engineering & Land Surveying
 85 South 200 East Vernal, Utah 84078
 (435) 789-1017 * FAX (435) 789-1813

LOCATION PHOTOS

12	13	13
MONTH	DAY	YEAR

PHOTO
P3

TAKEN BY: B.B.	DRAWN BY: J.M.F.	REVISED: 00-00-00
----------------	------------------	-------------------