

# BONANZA CREEK ENERGY OPERATING

Well Name: **State North Platte 11-14-26HC**

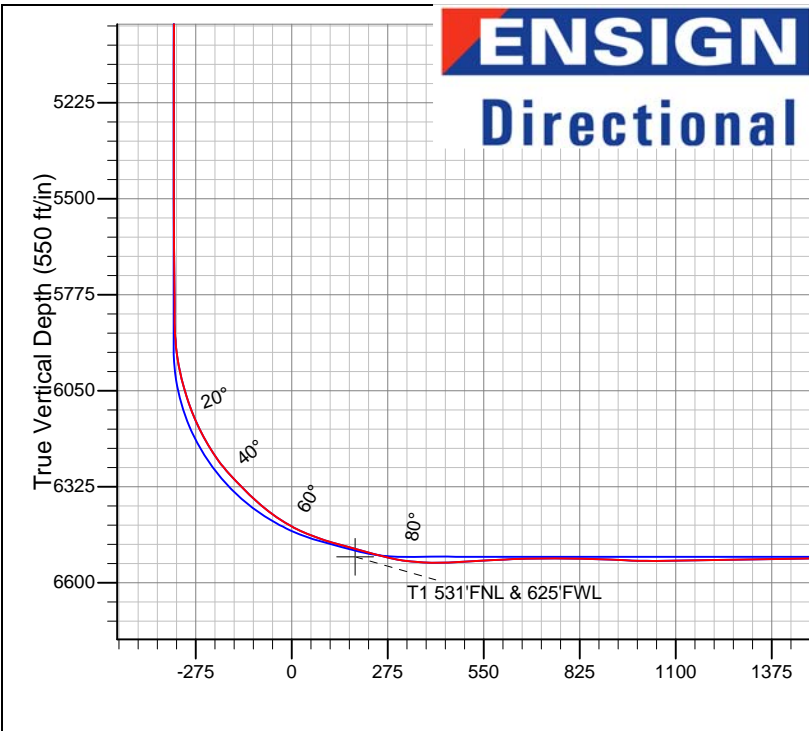
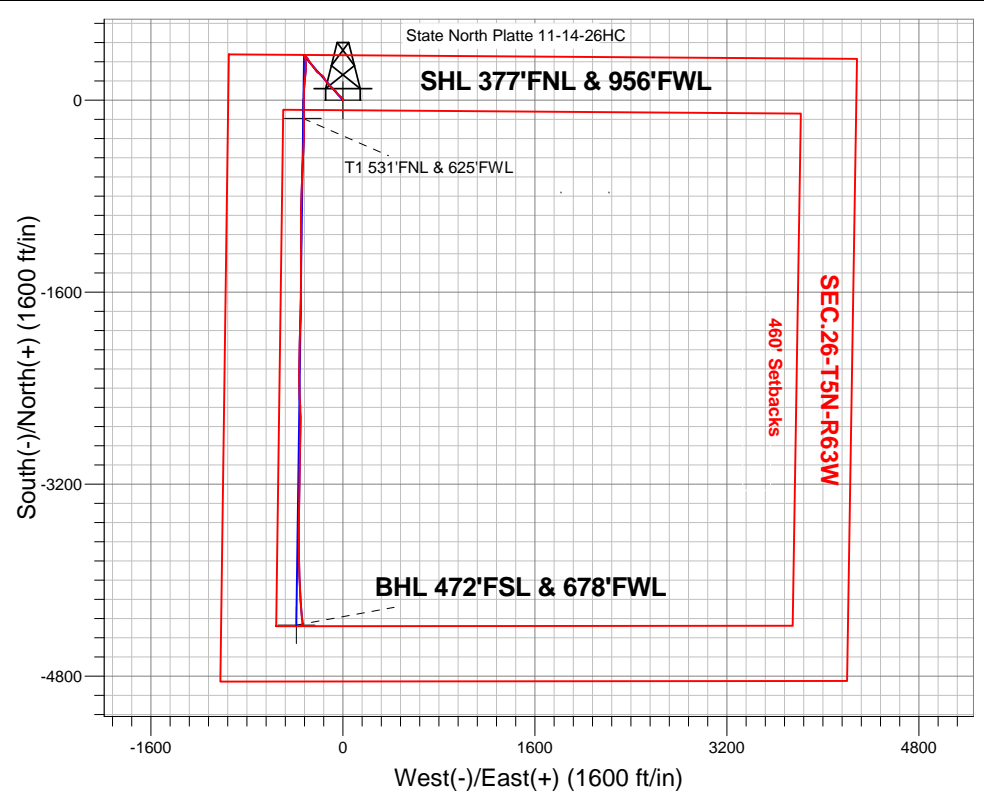
Surface Location: State North Platte 11-14-26HC Pad Sec.26-T5N-R63W  
 North American Datum 1983 , US State Plane 1983 , Colorado Northern Zone  
 Ground Elevation: 4566.0

+N/-S	+E/-W	Northing	Easting	Latitude	Longitude	Slot
0.0	0.0	1381854.67	3303949.85	40.376460	-104.409010	

Ensign 136 RKB - 12' WELL @ 4578.0ft (Ensign 136 RKB - 12')

## FINAL SURVEY

Projected Bottom Hole Location  
 11015'MD 6504'TVD 4374'S & 334'W of SHL  
 87.4 degree Incl @ 173.2 degree AZM

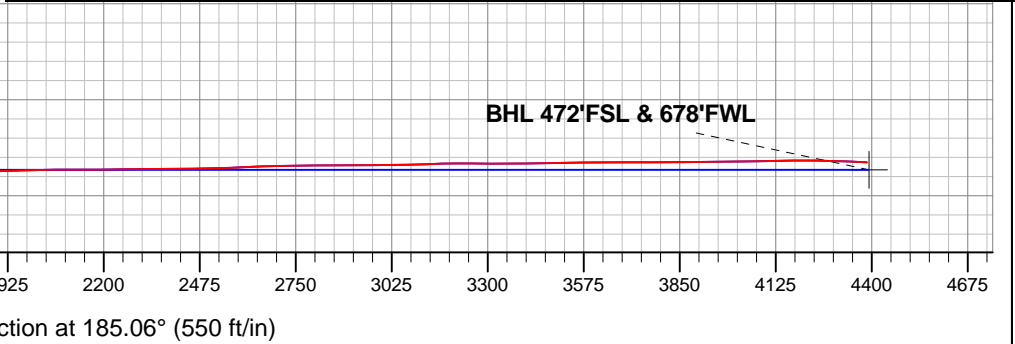


State North Platte 11-14-26HC Pad Sec.26-T5N-R63W  
 State North Platte 11-14-26HC  
 12:58, January 09 2014  
 Wellbore #1

**ANNOTATIONS**  
 No annotation data is available.

**LEGEND**

- △ State North Platte 11-14-26HC, Wellbore #1, Plan #2 (10-14-13) V0
- Wellbore #1
- Survey #1





# **BONANZA CREEK ENERGY OPERATING**

**SEC.26-T5N-R63W**

**State North Platte 11-14-26HC Pad Sec.26-T5N-R63W**

**State North Platte 11-14-26HC**

**Wellbore #1**

**Survey: Survey #1**

## **Standard Survey Report**

**09 January, 2014**

<b>Company:</b>	BONANZA CREEK ENERGY OPERATING	<b>Local Co-ordinate Reference:</b>	Well State North Platte 11-14-26HC
<b>Project:</b>	SEC.26-T5N-R63W	<b>TVD Reference:</b>	WELL @ 4578.0ft (Ensign 136 RKB - 12')
<b>Site:</b>	State North Platte 11-14-26HC Pad Sec.26-T5N-R63W	<b>MD Reference:</b>	WELL @ 4578.0ft (Ensign 136 RKB - 12')
<b>Well:</b>	State North Platte 11-14-26HC	<b>North Reference:</b>	True
<b>Wellbore:</b>	Wellbore #1	<b>Survey Calculation Method:</b>	Minimum Curvature
<b>Design:</b>	Wellbore #1	<b>Database:</b>	Landmark

<b>Project</b>	SEC.26-T5N-R63W, Weld County, CO		
<b>Map System:</b>	US State Plane 1983	<b>System Datum:</b>	Mean Sea Level
<b>Geo Datum:</b>	North American Datum 1983		Using Well Reference Point
<b>Map Zone:</b>	Colorado Northern Zone		Using geodetic scale factor

<b>Site</b>	State North Platte 11-14-26HC Pad Sec.26-T5N-R63W				
<b>Site Position:</b>		<b>Northing:</b>	1,381,792.75 ft	<b>Latitude:</b>	40.376290
<b>From:</b>	Lat/Long	<b>Easting:</b>	3,303,950.61 ft	<b>Longitude:</b>	-104.409010
<b>Position Uncertainty:</b>	0.0 ft	<b>Slot Radius:</b>	"	<b>Grid Convergence:</b>	0.70 °

<b>Well</b>	State North Platte 11-14-26HC					
<b>Well Position</b>	<b>+N/-S</b>	0.0 ft	<b>Northing:</b>	1,381,854.67 ft	<b>Latitude:</b>	40.376460
	<b>+E/-W</b>	0.0 ft	<b>Easting:</b>	3,303,949.85 ft	<b>Longitude:</b>	-104.409010
<b>Position Uncertainty</b>		0.0 ft	<b>Wellhead Elevation:</b>	ft	<b>Ground Level:</b>	4,566.0 ft

<b>Wellbore</b>	Wellbore #1				
<b>Magnetics</b>	<b>Model Name</b>	<b>Sample Date</b>	<b>Declination (°)</b>	<b>Dip Angle (°)</b>	<b>Field Strength (nT)</b>
	IGRF2010	10/11/2013	8.36	67.01	52,913

<b>Design</b>	Wellbore #1				
<b>Audit Notes:</b>					
<b>Version:</b>	1.0	<b>Phase:</b>	ACTUAL	<b>Tie On Depth:</b>	0.0
<b>Vertical Section:</b>		<b>Depth From (TVD) (ft)</b>	<b>+N/-S (ft)</b>	<b>+E/-W (ft)</b>	<b>Direction (°)</b>
		0.0	0.0	0.0	185.06

<b>Survey Program</b>	<b>Date</b>	1/9/2014		
<b>From (ft)</b>	<b>To (ft)</b>	<b>Survey (Wellbore)</b>	<b>Tool Name</b>	<b>Description</b>
80.0	11,015.0	Survey #1 (Wellbore #1)	MWD	MWD - Standard

<b>Survey</b>										
<b>Measured Depth (ft)</b>	<b>Inclination (°)</b>	<b>Azimuth (°)</b>	<b>Vertical Depth (ft)</b>	<b>+N/-S (ft)</b>	<b>+E/-W (ft)</b>	<b>Vertical Section (ft)</b>	<b>Dogleg Rate (°/100ft)</b>	<b>Build Rate (°/100ft)</b>	<b>Turn Rate (°/100ft)</b>	
0.0	0.00	0.00	0.0	0.0	0.0	0.0	0.00	0.00	0.00	
1.0	0.01	69.90	1.0	0.0	0.0	0.0	0.50	0.50	0.00	
<b>SHL 377'FNL &amp; 956'FWL</b>										
80.0	0.40	69.90	80.0	0.1	0.3	-0.1	0.50	0.50	0.00	
197.0	0.40	69.20	197.0	0.4	1.0	-0.5	0.00	0.00	-0.60	
312.0	0.40	69.90	312.0	0.7	1.8	-0.8	0.00	0.00	0.61	
429.0	0.40	69.70	429.0	0.9	2.5	-1.2	0.00	0.00	-0.17	
516.0	0.70	44.00	516.0	1.4	3.2	-1.7	0.44	0.34	-29.54	
609.0	0.90	72.20	609.0	2.1	4.3	-2.4	0.47	0.22	30.32	
703.0	0.90	66.70	703.0	2.6	5.7	-3.1	0.09	0.00	-5.85	
797.0	1.60	326.20	797.0	4.0	5.6	-4.4	2.10	0.74	-106.92	
890.0	2.40	316.90	889.9	6.5	3.6	-6.8	0.93	0.86	-10.00	

<b>Company:</b>	BONANZA CREEK ENERGY OPERATING	<b>Local Co-ordinate Reference:</b>	Well State North Platte 11-14-26HC
<b>Project:</b>	SEC.26-T5N-R63W	<b>TVD Reference:</b>	WELL @ 4578.0ft (Ensign 136 RKB - 12')
<b>Site:</b>	State North Platte 11-14-26HC Pad Sec.26-T5N-R63W	<b>MD Reference:</b>	WELL @ 4578.0ft (Ensign 136 RKB - 12')
<b>Well:</b>	State North Platte 11-14-26HC	<b>North Reference:</b>	True
<b>Wellbore:</b>	Wellbore #1	<b>Survey Calculation Method:</b>	Minimum Curvature
<b>Design:</b>	Wellbore #1	<b>Database:</b>	Landmark

Survey									
Measured Depth (ft)	Inclination (°)	Azimuth (°)	Vertical Depth (ft)	+N/-S (ft)	+E/-W (ft)	Vertical Section (ft)	Dogleg Rate (°/100ft)	Build Rate (°/100ft)	Turn Rate (°/100ft)
982.0	5.10	315.80	981.7	10.8	-0.6	-10.7	2.94	2.93	-1.20
1,073.0	7.20	312.80	1,072.2	17.6	-7.6	-16.8	2.33	2.31	-3.30
1,163.0	6.80	313.90	1,161.5	25.1	-15.6	-23.6	0.47	-0.44	1.22
1,254.0	8.40	311.20	1,251.7	33.2	-24.5	-30.9	1.80	1.76	-2.97
1,346.0	8.40	311.20	1,342.7	42.1	-34.6	-38.9	0.00	0.00	0.00
1,492.0	7.70	326.00	1,487.3	57.2	-48.1	-52.7	1.49	-0.48	10.14
1,564.0	6.80	326.00	1,558.7	64.7	-53.2	-59.8	1.25	-1.25	0.00
1,691.0	7.60	314.20	1,684.7	76.8	-63.4	-70.9	1.32	0.63	-9.29
1,818.0	6.20	306.30	1,810.8	86.7	-74.9	-79.8	1.33	-1.10	-6.22
1,945.0	6.70	312.30	1,937.0	95.8	-85.9	-87.8	0.66	0.39	4.72
2,072.0	6.90	324.60	2,063.1	107.0	-95.8	-98.1	1.16	0.16	9.69
2,200.0	6.50	315.80	2,190.2	118.5	-105.3	-108.7	0.86	-0.31	-6.88
2,327.0	7.40	314.90	2,316.3	129.4	-116.1	-118.6	0.71	0.71	-0.71
2,453.0	8.80	318.60	2,441.0	142.3	-128.3	-130.5	1.19	1.11	2.94
2,581.0	9.90	325.80	2,567.3	158.8	-140.9	-145.7	1.25	0.86	5.63
2,709.0	8.40	331.60	2,693.7	176.1	-151.6	-162.1	1.37	-1.17	4.53
2,837.0	6.20	327.20	2,820.7	190.2	-159.8	-175.3	1.77	-1.72	-3.44
2,966.0	6.20	313.70	2,948.9	200.8	-168.6	-185.2	1.13	0.00	-10.47
3,094.0	5.20	307.00	3,076.3	209.1	-178.2	-192.6	0.94	-0.78	-5.23
3,222.0	6.60	308.40	3,203.6	217.1	-188.6	-199.7	1.10	1.09	1.09
3,351.0	7.50	302.40	3,331.6	226.3	-201.5	-207.6	0.90	0.70	-4.65
3,479.0	9.30	316.50	3,458.3	238.2	-215.7	-218.3	2.13	1.41	11.02
3,612.0	11.10	324.90	3,589.2	256.5	-230.4	-235.2	1.75	1.35	6.32
3,736.0	10.40	323.40	3,711.0	275.3	-244.0	-252.7	0.61	-0.56	-1.21
3,864.0	9.30	322.70	3,837.1	292.8	-257.1	-269.0	0.86	-0.86	-0.55
3,992.0	8.10	319.70	3,963.6	307.9	-269.2	-282.9	1.00	-0.94	-2.34
4,121.0	7.50	330.60	4,091.4	322.1	-279.3	-296.3	1.24	-0.47	8.45
4,249.0	8.40	327.20	4,218.2	337.3	-288.4	-310.5	0.79	0.70	-2.66
4,377.0	6.40	324.20	4,345.1	350.9	-297.7	-323.3	1.59	-1.56	-2.34
4,505.0	4.50	304.40	4,472.6	359.5	-306.0	-331.2	2.07	-1.48	-15.47
4,634.0	2.80	285.90	4,601.3	363.3	-313.2	-334.2	1.59	-1.32	-14.34
4,762.0	0.70	307.50	4,729.2	364.6	-316.8	-335.2	1.69	-1.64	16.88
4,890.0	0.70	319.30	4,857.2	365.7	-317.9	-336.2	0.11	0.00	9.22
5,019.0	0.40	330.20	4,986.2	366.7	-318.7	-337.1	0.25	-0.23	8.45
5,147.0	0.20	255.70	5,114.2	367.0	-319.1	-337.4	0.31	-0.16	-58.20
5,275.0	0.40	299.60	5,242.2	367.2	-319.7	-337.5	0.23	0.16	34.30
5,404.0	0.20	177.10	5,371.2	367.2	-320.1	-337.5	0.41	-0.16	-94.96
5,532.0	0.10	91.70	5,499.2	366.9	-320.0	-337.3	0.17	-0.08	-66.72
5,661.0	0.50	172.70	5,628.2	366.4	-319.8	-336.7	0.38	0.31	62.79
5,789.0	0.40	161.30	5,756.2	365.4	-319.6	-335.8	0.10	-0.08	-8.91
5,832.0	0.40	141.40	5,799.2	365.1	-319.4	-335.5	0.32	0.00	-46.28
5,875.0	0.60	148.60	5,842.2	364.8	-319.2	-335.3	0.49	0.47	16.74
5,917.0	3.30	149.70	5,884.2	363.6	-318.5	-334.1	6.43	6.43	2.62
5,960.0	6.40	161.50	5,927.0	360.2	-317.1	-330.9	7.54	7.21	27.44
6,003.0	10.30	166.00	5,969.5	354.2	-315.4	-325.0	9.19	9.07	10.47
6,046.0	14.10	166.60	6,011.6	345.4	-313.3	-316.4	8.84	8.84	1.40
6,089.0	17.30	170.10	6,053.0	334.0	-311.0	-305.3	7.76	7.44	8.14
6,131.0	20.30	173.80	6,092.7	320.6	-309.1	-292.1	7.68	7.14	8.81
6,174.0	23.70	176.10	6,132.6	304.6	-307.7	-276.3	8.16	7.91	5.35
6,217.0	27.20	178.20	6,171.4	286.1	-306.8	-258.0	8.40	8.14	4.88
6,260.0	30.80	182.90	6,209.0	265.3	-307.1	-237.2	9.90	8.37	10.93
6,302.0	35.50	187.30	6,244.2	242.4	-309.2	-214.2	12.57	11.19	10.48
6,345.0	40.60	186.40	6,278.0	216.1	-312.3	-187.8	11.93	11.86	-2.09

<b>Company:</b>	BONANZA CREEK ENERGY OPERATING	<b>Local Co-ordinate Reference:</b>	Well State North Platte 11-14-26HC
<b>Project:</b>	SEC.26-T5N-R63W	<b>TVD Reference:</b>	WELL @ 4578.0ft (Ensign 136 RKB - 12')
<b>Site:</b>	State North Platte 11-14-26HC Pad Sec.26-T5N-R63W	<b>MD Reference:</b>	WELL @ 4578.0ft (Ensign 136 RKB - 12')
<b>Well:</b>	State North Platte 11-14-26HC	<b>North Reference:</b>	True
<b>Wellbore:</b>	Wellbore #1	<b>Survey Calculation Method:</b>	Minimum Curvature
<b>Design:</b>	Wellbore #1	<b>Database:</b>	Landmark

Survey									
Measured Depth (ft)	Inclination (°)	Azimuth (°)	Vertical Depth (ft)	+N/-S (ft)	+E/-W (ft)	Vertical Section (ft)	Dogleg Rate (°/100ft)	Build Rate (°/100ft)	Turn Rate (°/100ft)
6,388.0	43.80	185.90	6,309.9	187.4	-315.4	-158.9	7.48	7.44	-1.16
6,431.0	45.20	185.00	6,340.5	157.4	-318.3	-128.7	3.57	3.26	-2.09
6,474.0	48.50	183.80	6,369.9	126.2	-320.7	-97.4	7.94	7.67	-2.79
6,516.0	52.60	182.70	6,396.6	93.8	-322.5	-65.0	9.97	9.76	-2.62
6,559.0	57.50	181.90	6,421.3	58.6	-323.9	-29.8	11.50	11.40	-1.86
6,602.0	62.60	181.30	6,442.7	21.3	-324.9	7.4	11.92	11.86	-1.40
6,645.0	67.30	179.60	6,460.9	-17.6	-325.2	46.2	11.50	10.93	-3.95
6,687.0	71.80	178.90	6,475.6	-56.9	-324.7	85.3	10.83	10.71	-1.67
6,730.0	74.70	179.90	6,488.0	-98.1	-324.3	126.3	7.10	6.74	2.33
6,773.0	74.70	180.10	6,499.3	-139.6	-324.3	167.6	0.45	0.00	0.47
6,792.9	74.75	179.87	6,504.6	-158.8	-324.3	186.8	1.15	0.23	-1.16
<b>T1 531'FNL &amp; 625'FWL</b>									
6,816.0	74.80	179.60	6,510.6	-181.1	-324.2	208.9	1.15	0.23	-1.16
6,858.0	74.90	179.70	6,521.6	-221.6	-323.9	249.3	0.33	0.24	0.24
6,901.0	78.30	180.10	6,531.6	-263.4	-323.8	291.0	7.96	7.91	0.93
6,942.0	83.30	181.50	6,538.1	-303.9	-324.4	331.3	12.65	12.20	3.41
7,011.0	89.00	182.90	6,542.8	-372.6	-327.1	400.0	8.51	8.26	2.03
7,053.0	91.40	182.70	6,542.6	-414.6	-329.1	442.0	5.73	5.71	-0.48
7,096.0	93.30	182.60	6,540.8	-457.5	-331.1	484.9	4.42	4.42	-0.23
7,138.0	93.70	182.00	6,538.3	-499.4	-332.8	526.8	1.71	0.95	-1.43
7,180.0	93.20	182.90	6,535.8	-541.3	-334.6	568.7	2.45	-1.19	2.14
7,223.0	92.80	182.00	6,533.5	-584.2	-336.4	611.6	2.29	-0.93	-2.09
7,266.0	91.80	182.40	6,531.8	-627.1	-338.1	654.5	2.50	-2.33	0.93
7,309.0	90.70	182.20	6,530.8	-670.1	-339.8	697.4	2.60	-2.56	-0.47
7,352.0	89.90	182.20	6,530.6	-713.0	-341.4	740.4	1.86	-1.86	0.00
7,394.0	89.10	182.20	6,531.0	-755.0	-343.0	782.3	1.90	-1.90	0.00
7,437.0	89.40	182.40	6,531.5	-798.0	-344.8	825.3	0.84	0.70	0.47
7,480.0	88.50	181.00	6,532.3	-840.9	-346.0	868.2	3.87	-2.09	-3.26
7,523.0	87.20	181.50	6,533.9	-883.9	-347.0	911.1	3.24	-3.02	1.16
7,566.0	87.20	180.60	6,536.0	-926.8	-347.8	953.9	2.09	0.00	-2.09
7,609.0	88.90	179.70	6,537.5	-969.8	-347.9	996.7	4.47	3.95	-2.09
7,651.0	90.20	179.60	6,537.8	-1,011.8	-347.6	1,038.5	3.10	3.10	-0.24
7,694.0	90.70	179.90	6,537.5	-1,054.8	-347.4	1,081.3	1.36	1.16	0.70
7,737.0	91.10	179.90	6,536.8	-1,097.8	-347.4	1,124.2	0.93	0.93	0.00
7,780.0	91.40	179.70	6,535.9	-1,140.8	-347.2	1,167.0	0.84	0.70	-0.47
7,822.0	90.80	180.10	6,535.1	-1,182.8	-347.1	1,208.8	1.72	-1.43	0.95
7,865.0	91.20	180.30	6,534.3	-1,225.8	-347.3	1,251.6	1.04	0.93	0.47
7,908.0	90.40	181.00	6,533.7	-1,268.8	-347.8	1,294.5	2.47	-1.86	1.63
7,951.0	90.60	180.60	6,533.4	-1,311.8	-348.4	1,337.4	1.04	0.47	-0.93
7,993.0	90.80	180.60	6,532.8	-1,353.8	-348.8	1,379.2	0.48	0.48	0.00
8,036.0	91.10	180.40	6,532.1	-1,396.7	-349.2	1,422.1	0.84	0.70	-0.47
8,079.0	91.50	179.00	6,531.2	-1,439.7	-349.0	1,464.9	3.39	0.93	-3.26
8,122.0	90.90	178.70	6,530.3	-1,482.7	-348.1	1,507.6	1.56	-1.40	-0.70
8,164.0	90.10	179.60	6,529.9	-1,524.7	-347.5	1,549.4	2.87	-1.90	2.14
8,207.0	89.10	180.60	6,530.2	-1,567.7	-347.6	1,592.2	3.29	-2.33	2.33
8,250.0	89.30	180.80	6,530.8	-1,610.7	-348.1	1,635.1	0.66	0.47	0.47
8,293.0	89.60	180.80	6,531.2	-1,653.7	-348.7	1,678.0	0.70	0.70	0.00
8,335.0	89.80	180.60	6,531.4	-1,695.7	-349.2	1,719.9	0.67	0.48	-0.48
8,378.0	90.00	181.90	6,531.5	-1,738.7	-350.1	1,762.8	3.06	0.47	3.02
8,421.0	90.50	182.20	6,531.3	-1,781.7	-351.7	1,805.7	1.36	1.16	0.70
8,464.0	90.80	182.00	6,530.8	-1,824.6	-353.2	1,848.7	0.84	0.70	-0.47
8,507.0	91.30	181.90	6,530.0	-1,867.6	-354.7	1,891.6	1.19	1.16	-0.23
8,549.0	91.90	181.70	6,528.9	-1,909.6	-356.0	1,933.5	1.51	1.43	-0.48

<b>Company:</b>	BONANZA CREEK ENERGY OPERATING	<b>Local Co-ordinate Reference:</b>	Well State North Platte 11-14-26HC
<b>Project:</b>	SEC.26-T5N-R63W	<b>TVD Reference:</b>	WELL @ 4578.0ft (Ensign 136 RKB - 12')
<b>Site:</b>	State North Platte 11-14-26HC Pad Sec.26-T5N-R63W	<b>MD Reference:</b>	WELL @ 4578.0ft (Ensign 136 RKB - 12')
<b>Well:</b>	State North Platte 11-14-26HC	<b>North Reference:</b>	True
<b>Wellbore:</b>	Wellbore #1	<b>Survey Calculation Method:</b>	Minimum Curvature
<b>Design:</b>	Wellbore #1	<b>Database:</b>	Landmark

Survey									
Measured Depth (ft)	Inclination (°)	Azimuth (°)	Vertical Depth (ft)	+N/-S (ft)	+E/-W (ft)	Vertical Section (ft)	Dogleg Rate (°/100ft)	Build Rate (°/100ft)	Turn Rate (°/100ft)
8,592.0	91.70	181.90	6,527.5	-1,952.5	-357.4	1,976.4	0.66	-0.47	0.47
8,635.0	91.50	181.20	6,526.3	-1,995.5	-358.5	2,019.3	1.69	-0.47	-1.63
8,678.0	90.60	181.30	6,525.5	-2,038.5	-359.5	2,062.2	2.11	-2.09	0.23
8,720.0	89.80	181.50	6,525.4	-2,080.4	-360.5	2,104.1	1.96	-1.90	0.48
8,763.0	90.00	181.50	6,525.5	-2,123.4	-361.6	2,147.0	0.47	0.47	0.00
8,806.0	90.20	180.80	6,525.4	-2,166.4	-362.5	2,189.9	1.69	0.47	-1.63
8,849.0	90.60	181.00	6,525.1	-2,209.4	-363.2	2,232.8	1.04	0.93	0.47
8,892.0	91.20	180.80	6,524.4	-2,252.4	-363.8	2,275.7	1.47	1.40	-0.47
8,934.0	90.50	179.90	6,523.8	-2,294.4	-364.1	2,317.6	2.71	-1.67	-2.14
8,977.0	90.10	179.40	6,523.6	-2,337.4	-363.8	2,360.4	1.49	-0.93	-1.16
9,020.0	90.30	178.90	6,523.4	-2,380.4	-363.2	2,403.1	1.25	0.47	-1.16
9,063.0	90.90	177.10	6,523.0	-2,423.4	-361.7	2,445.8	4.41	1.40	-4.19
9,105.0	91.20	176.80	6,522.2	-2,465.3	-359.5	2,487.4	1.01	0.71	-0.71
9,148.0	91.60	176.90	6,521.1	-2,508.2	-357.1	2,529.9	0.96	0.93	0.23
9,191.0	92.20	178.00	6,519.7	-2,551.1	-355.2	2,572.5	2.91	1.40	2.56
9,234.0	92.50	178.70	6,517.9	-2,594.1	-354.0	2,615.2	1.77	0.70	1.63
9,277.0	91.90	179.70	6,516.3	-2,637.1	-353.4	2,657.9	2.71	-1.40	2.33
9,319.0	91.60	180.40	6,515.0	-2,679.0	-353.4	2,699.8	1.81	-0.71	1.67
9,362.0	90.90	180.60	6,514.1	-2,722.0	-353.8	2,742.6	1.69	-1.63	0.47
9,405.0	90.10	181.20	6,513.7	-2,765.0	-354.4	2,785.5	2.33	-1.86	1.40
9,448.0	90.00	181.70	6,513.7	-2,808.0	-355.5	2,828.4	1.19	-0.23	1.16
9,490.0	90.40	181.30	6,513.5	-2,850.0	-356.6	2,870.3	1.35	0.95	-0.95
9,533.0	90.50	180.40	6,513.2	-2,893.0	-357.3	2,913.2	2.11	0.23	-2.09
9,576.0	90.60	180.10	6,512.8	-2,936.0	-357.5	2,956.1	0.74	0.23	-0.70
9,619.0	90.90	180.10	6,512.2	-2,979.0	-357.5	2,998.9	0.70	0.70	0.00
9,662.0	90.70	179.40	6,511.6	-3,022.0	-357.3	3,041.7	1.69	-0.47	-1.63
9,704.0	91.10	181.00	6,510.9	-3,064.0	-357.5	3,083.6	3.93	0.95	3.81
9,747.0	92.00	181.70	6,509.8	-3,106.9	-358.5	3,126.4	2.65	2.09	1.63
9,790.0	91.30	181.90	6,508.5	-3,149.9	-359.8	3,169.4	1.69	-1.63	0.47
9,833.0	90.50	181.50	6,507.9	-3,192.9	-361.1	3,212.3	2.08	-1.86	-0.93
9,875.0	89.40	180.80	6,507.9	-3,234.9	-362.0	3,254.2	3.10	-2.62	-1.67
9,918.0	89.70	180.40	6,508.2	-3,277.9	-362.4	3,297.0	1.16	0.70	-0.93
9,961.0	90.00	181.30	6,508.3	-3,320.9	-363.1	3,339.9	2.21	0.70	2.09
10,004.0	90.30	181.30	6,508.2	-3,363.8	-364.0	3,382.8	0.70	0.70	0.00
10,047.0	90.70	181.70	6,507.9	-3,406.8	-365.2	3,425.8	1.32	0.93	0.93
10,089.0	91.00	182.00	6,507.2	-3,448.8	-366.5	3,467.7	1.01	0.71	0.71
10,132.0	91.30	181.70	6,506.4	-3,491.8	-367.9	3,510.6	0.99	0.70	-0.70
10,175.0	91.20	181.00	6,505.4	-3,534.7	-368.9	3,553.5	1.64	-0.23	-1.63
10,218.0	90.30	179.70	6,504.9	-3,577.7	-369.2	3,596.4	3.68	-2.09	-3.02
10,261.0	90.20	179.90	6,504.7	-3,620.7	-369.0	3,639.2	0.52	-0.23	0.47
10,303.0	90.20	179.00	6,504.5	-3,662.7	-368.6	3,681.0	2.14	0.00	-2.14
10,346.0	90.20	179.00	6,504.4	-3,705.7	-367.9	3,723.7	0.00	0.00	0.00
10,389.0	90.00	178.90	6,504.3	-3,748.7	-367.1	3,766.5	0.52	-0.47	-0.23
10,432.0	90.40	178.70	6,504.2	-3,791.7	-366.2	3,809.2	1.04	0.93	-0.47
10,475.0	90.40	178.70	6,503.9	-3,834.7	-365.2	3,852.0	0.00	0.00	0.00
10,517.0	90.60	177.80	6,503.5	-3,876.7	-363.9	3,893.7	2.20	0.48	-2.14
10,560.0	90.30	177.50	6,503.2	-3,919.6	-362.2	3,936.3	0.99	-0.70	-0.70
10,603.0	90.80	178.00	6,502.7	-3,962.6	-360.5	3,979.0	1.64	1.16	1.16
10,646.0	90.70	177.30	6,502.2	-4,005.6	-358.7	4,021.6	1.64	-0.23	-1.63
10,689.0	90.80	177.30	6,501.6	-4,048.5	-356.7	4,064.2	0.23	0.23	0.00
10,731.0	91.60	176.90	6,500.7	-4,090.5	-354.6	4,105.8	2.13	1.90	-0.95
10,776.0	91.00	177.30	6,499.7	-4,135.4	-352.3	4,150.3	1.60	-1.33	0.89
10,821.0	90.00	177.10	6,499.3	-4,180.3	-350.1	4,194.9	2.27	-2.22	-0.44

<b>Company:</b>	BONANZA CREEK ENERGY OPERATING	<b>Local Co-ordinate Reference:</b>	Well State North Platte 11-14-26HC
<b>Project:</b>	SEC.26-T5N-R63W	<b>TVD Reference:</b>	WELL @ 4578.0ft (Ensign 136 RKB - 12')
<b>Site:</b>	State North Platte 11-14-26HC Pad Sec.26-T5N-R63W	<b>MD Reference:</b>	WELL @ 4578.0ft (Ensign 136 RKB - 12')
<b>Well:</b>	State North Platte 11-14-26HC	<b>North Reference:</b>	True
<b>Wellbore:</b>	Wellbore #1	<b>Survey Calculation Method:</b>	Minimum Curvature
<b>Design:</b>	Wellbore #1	<b>Database:</b>	Landmark

Survey									
Measured Depth (ft)	Inclination (°)	Azimuth (°)	Vertical Depth (ft)	+N/-S (ft)	+E/-W (ft)	Vertical Section (ft)	Dogleg Rate (°/100ft)	Build Rate (°/100ft)	Turn Rate (°/100ft)
10,866.0	89.10	176.80	6,499.7	-4,225.3	-347.7	4,239.5	2.11	-2.00	-0.67
10,910.0	88.40	175.40	6,500.6	-4,269.1	-344.7	4,282.9	3.56	-1.59	-3.18
10,953.0	88.00	174.50	6,502.0	-4,312.0	-340.9	4,325.2	2.29	-0.93	-2.09
11,012.0	87.45	173.26	6,504.3	-4,370.5	-334.6	4,383.0	2.29	-0.94	-2.10
<b>BHL 470'FSL &amp; 625'FWL</b>									
11,015.0	87.42	173.20	6,504.5	-4,373.5	-334.3	4,386.0	2.29	-0.93	-2.10

Checked By: \_\_\_\_\_ Approved By: \_\_\_\_\_ Date: \_\_\_\_\_