



CEMENT BOND LOG GAMMA RAY CCL

Company KERR-McGEE OIL & GAS ONSHORE LP
Well ARISTOCRAT 32-9 #2
Field WATTENBERG
County WELD
State COLORADO

Company KERR-McGEE OIL & GAS ONSHORE LP
Well ARISTOCRAT 32-9 #2
Field WATTENBERG
County WELD State COLORADO

Location: API # : 05-123-09725
SHL: 1980' FNL & 1980' FEL SW/NE
SEC 9 TWP 3N RGE 65W
Permanent Datum GL Elevation 4848'
Log Measured From KB 6'
Drilling Measured From KB
Other Services
K.B. 4854'
D.F. 4853'
G.L. 4848'

Date 11-22-2013

Run Number ONE
Depth Driller 4620'
Depth Logger 4368'
Bottom Logged Interval 4368'
Top Log Interval Surface
Open Hole Size 7 7/8
Type Fluid WATER
Density / Viscosity 1.0
Max. Recorded Temp. 147
Estimated Cement Top 3220'
Time Well Ready N/A
Time Logger on Bottom N/A
Equipment Number 5432
Location GREELEY.CO
Recorded By M. JANDREAU
Witnessed By Larry Webb

Borehole Record			Tubing Record				
Run Number	Bit	From	To	Size	Weight	From	To
ONE							
TWO							

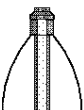
Casing Record	Size	Wgt/Ft	Top	Bottom
Surface String	8 5/8	24#	0	442'
Prot. String				
Production String	5 1/2	15.5	0	4618'
Liner				

<<< Fold Here >>>

All interpretations are opinions based on inferences from electrical or other measurements and we cannot and do not guarantee the accuracy or correctness of any interpretation, and we shall not, except in the case of gross or willful negligence on our part, be liable or responsible for any loss, costs, damages, or expenses incurred or sustained by anyone resulting from any interpretation made by any of our officers, agents or employees. These interpretations are also subject to our general terms and conditions set out in our current Price Schedule.

Comments

NOT CORRELATED
RAN LOG TO VERIFY CEMENT TOP
THANK YOU FOR USING WARRIOR ENERGY SERVICES!!!!

Sensor	Offset (ft)	Schematic	Description	Len (ft)	OD (in)	Wt (lb)
						

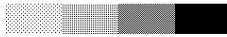

Tool Joint	Tool Joint Length (ft)	Tool Joint Weight (lb)	Tool Joint O.D. (in)	Tool Joint I.D. (in)	Tool Joint Wall Thickness (in)	Tool Joint Material	Tool Joint Notes
PTS275	2.83	2.75					
HEADVOLT	16.25						
IntTemp	14.83						
WVFS3FT	11.58						
WVFCAL	11.58						
WVFS1	11.58						
WVFS2	11.58						
WVFS3	11.58						
WVFS4	11.58						
WVFS5	11.58						
WVFS6	11.58						
WVFS7	11.58						
WVFS8	11.58						
WVFS5FT	10.58						
CNLSC	6.00						
CNSSC	5.17						
CCL	3.64						
GR	0.90						
RBT-Probe (Base)	8.92	2.75	90.00				Probe Radii Bond Tool with Digital Telemetry
CNT-Probe_B (275)	3.00	2.75	40.00				6 bow centralizer
GR-Probe (275)	4.33	2.75	30.00				Probe 2.75"

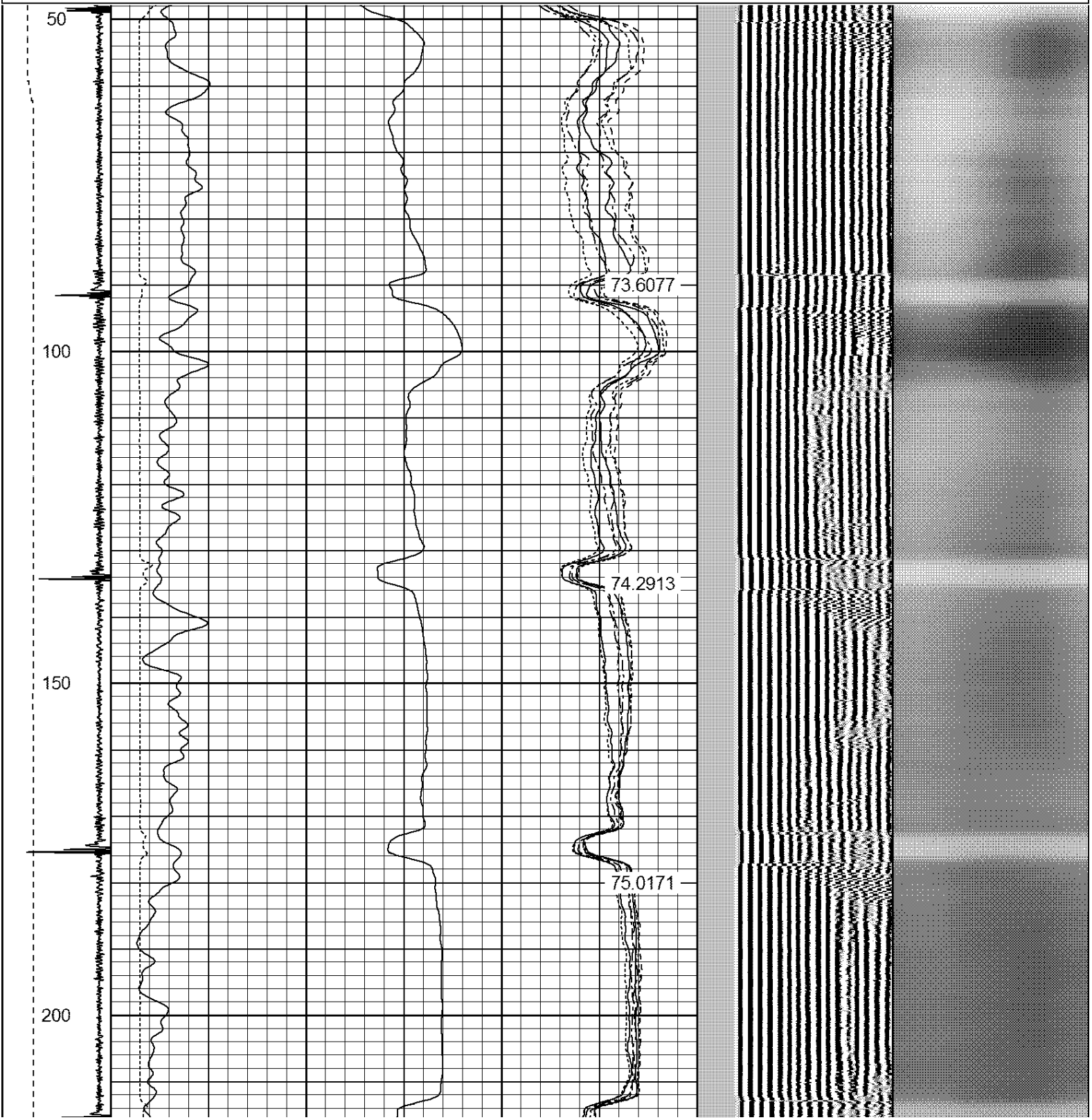
Dataset: aristocrat 32-9 #2.db: field/well/run1/pass4

Total Length: 19.08 ft

Total Weight: 160.00 lb

O.D. 2.75 in

Dataset Creation: Fri Nov 22 16:19:28 2013 by Log 7.0 B1																					
Charted by: Depth in Feet scaled 1:240																					
-9	CCL	1	200	TT (usec)	800	0	AMP (mV)	100	0	AMPS1	100	200	VDL	1200	1	Cement Map	8				
LSPD (ft/min)	0		0	GR (GAPI)	200	0	AMPx5 (mV)	20	0	AMPS2	100			1				100			
	200		200	GR (GAPI)	400				0	AMPS4	100										
	0		0						0	AMPS5	100										
									0	AMPS6	100										
									0	AMPS7	100										
									0	AMPS8	100										
											IntTemp (degF)										



250

300

350

400

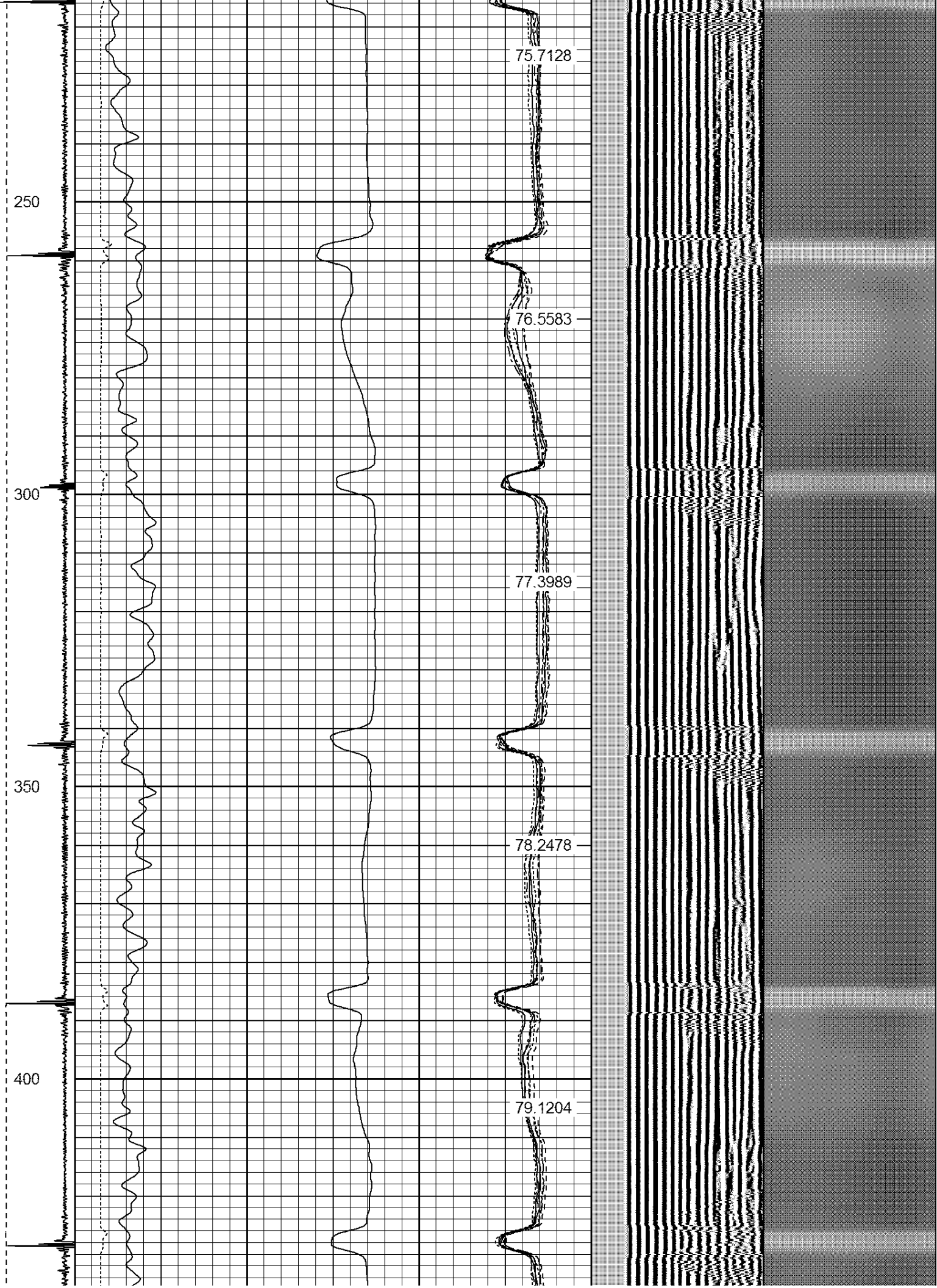
75.7128

76.5583

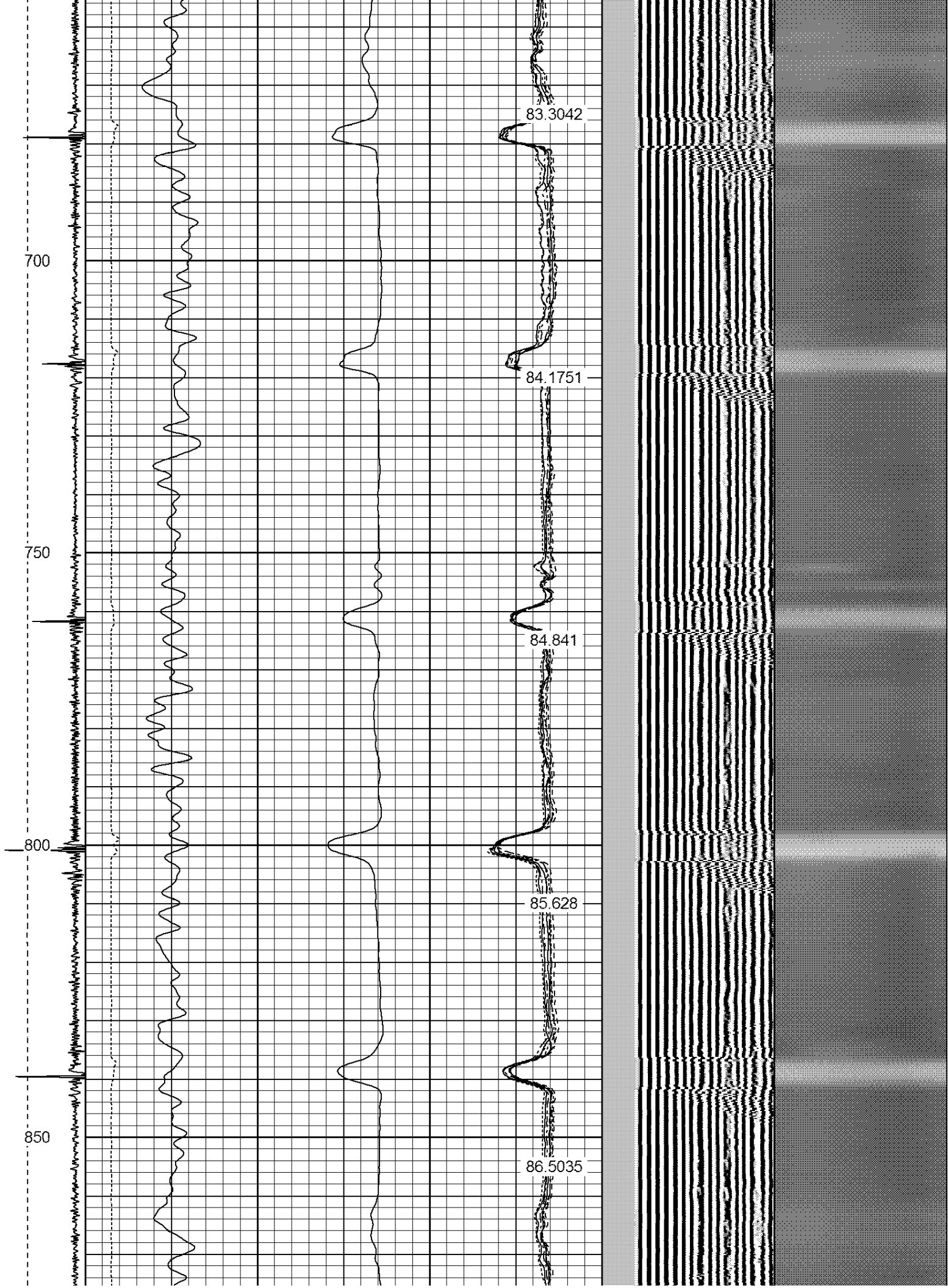
77.3989

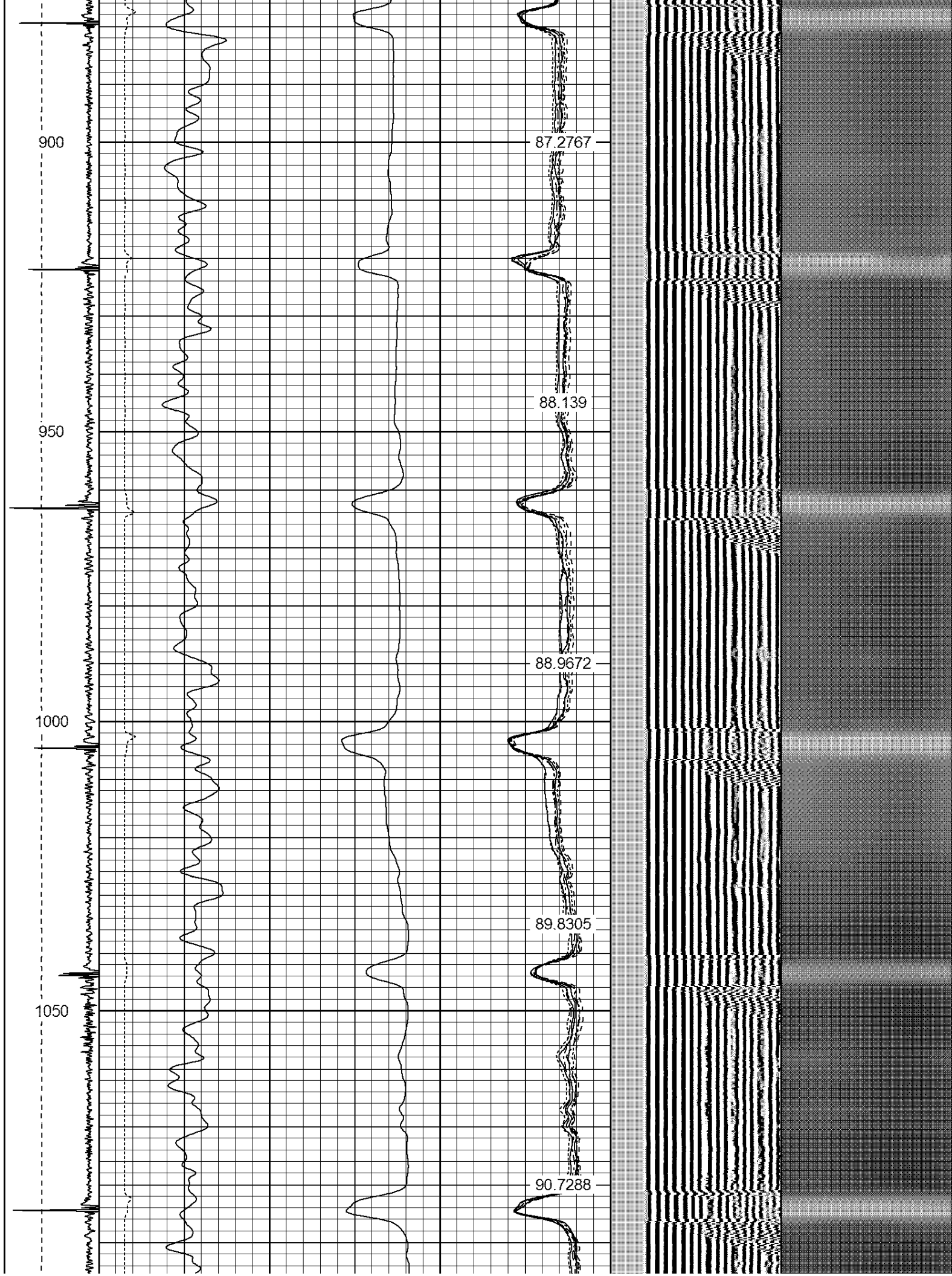
78.2478

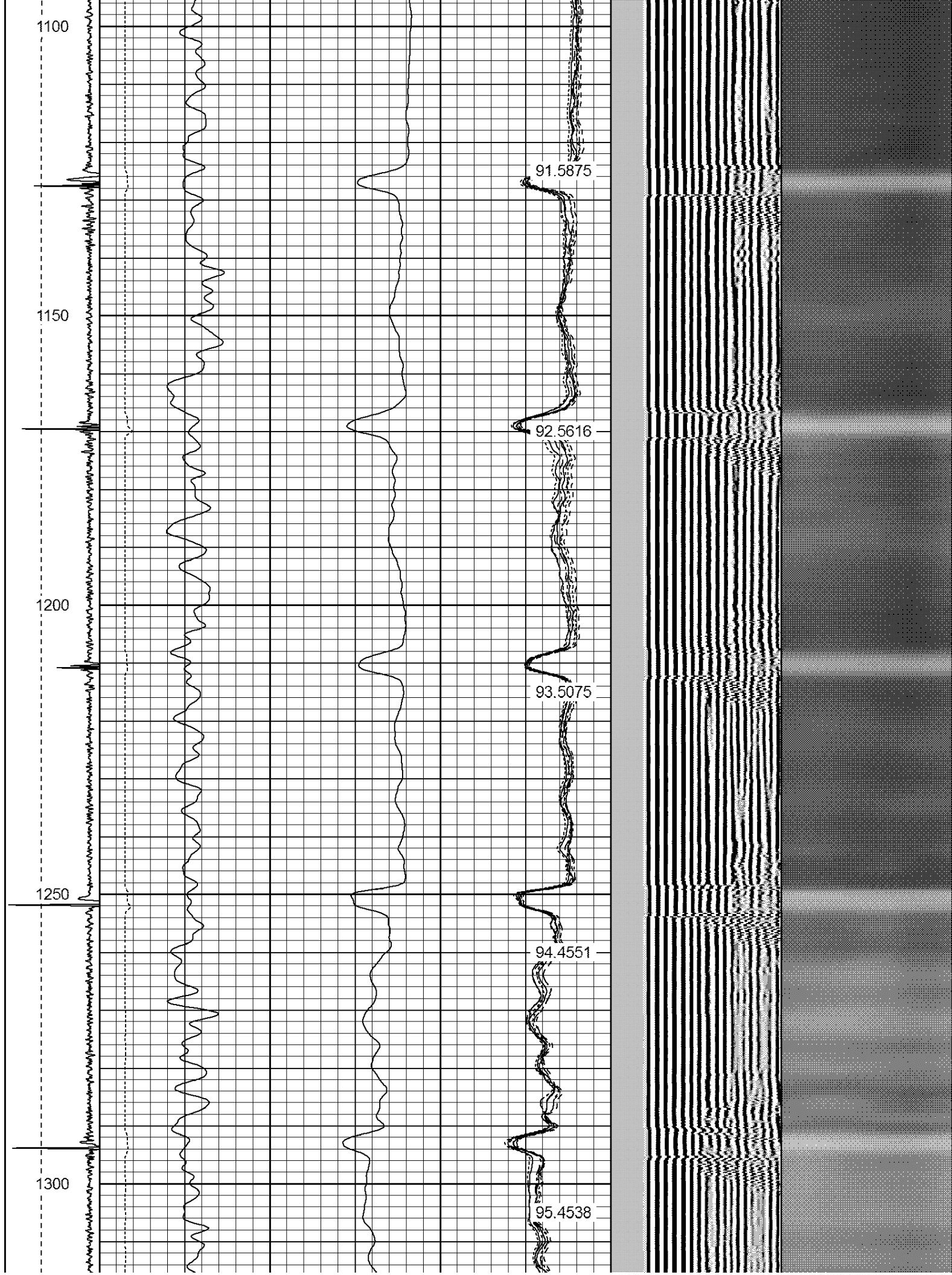
79.1204

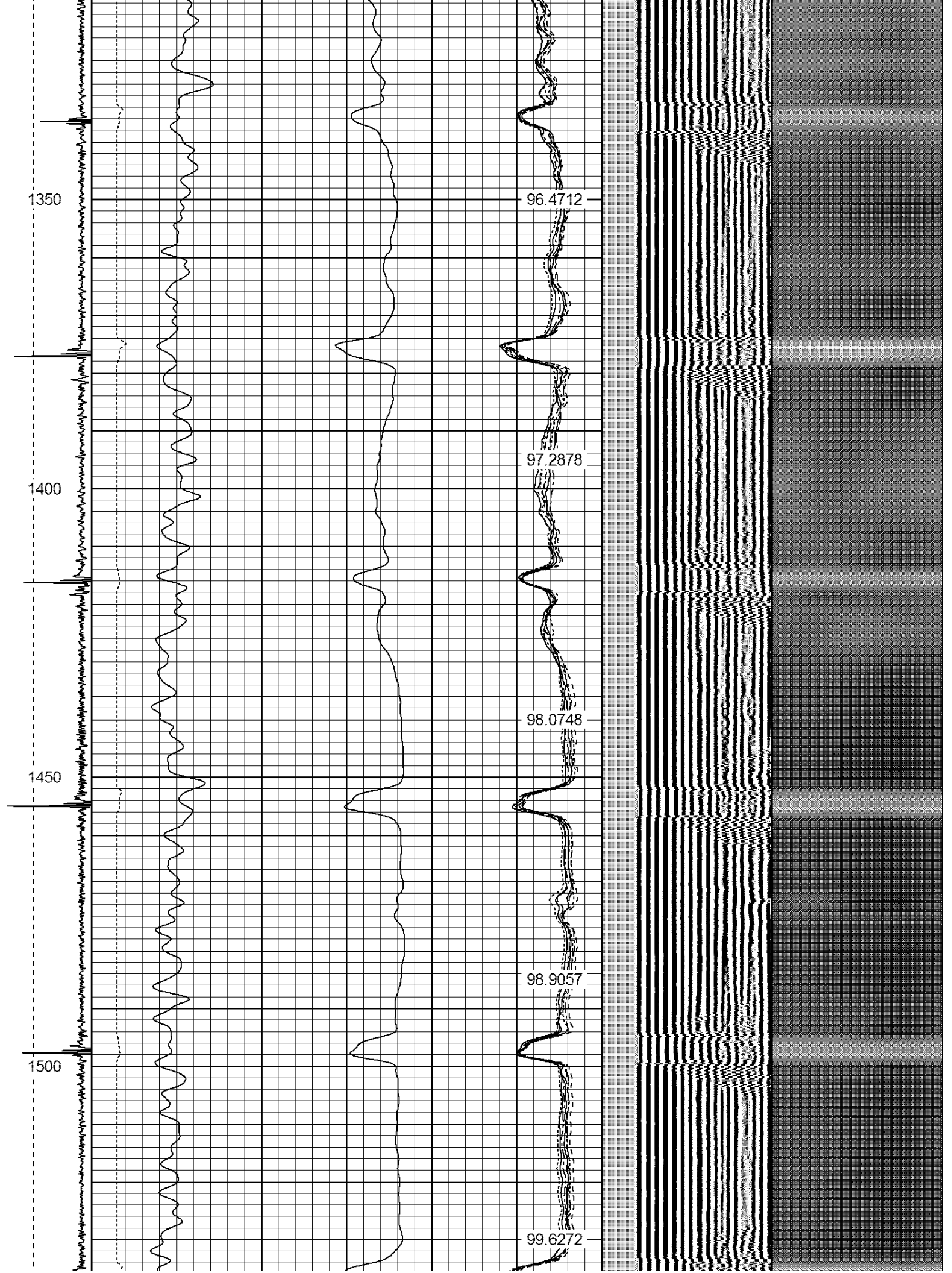


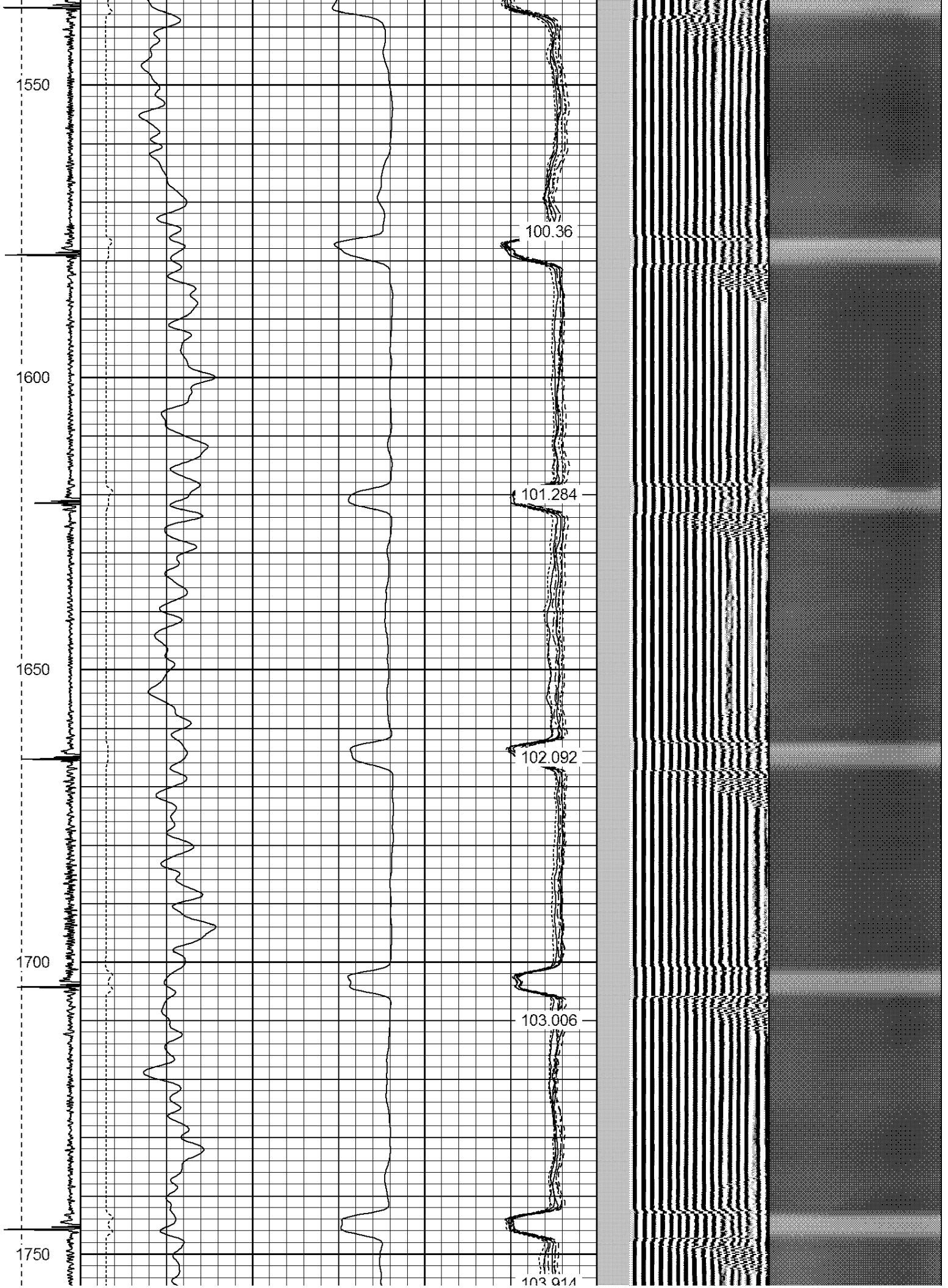


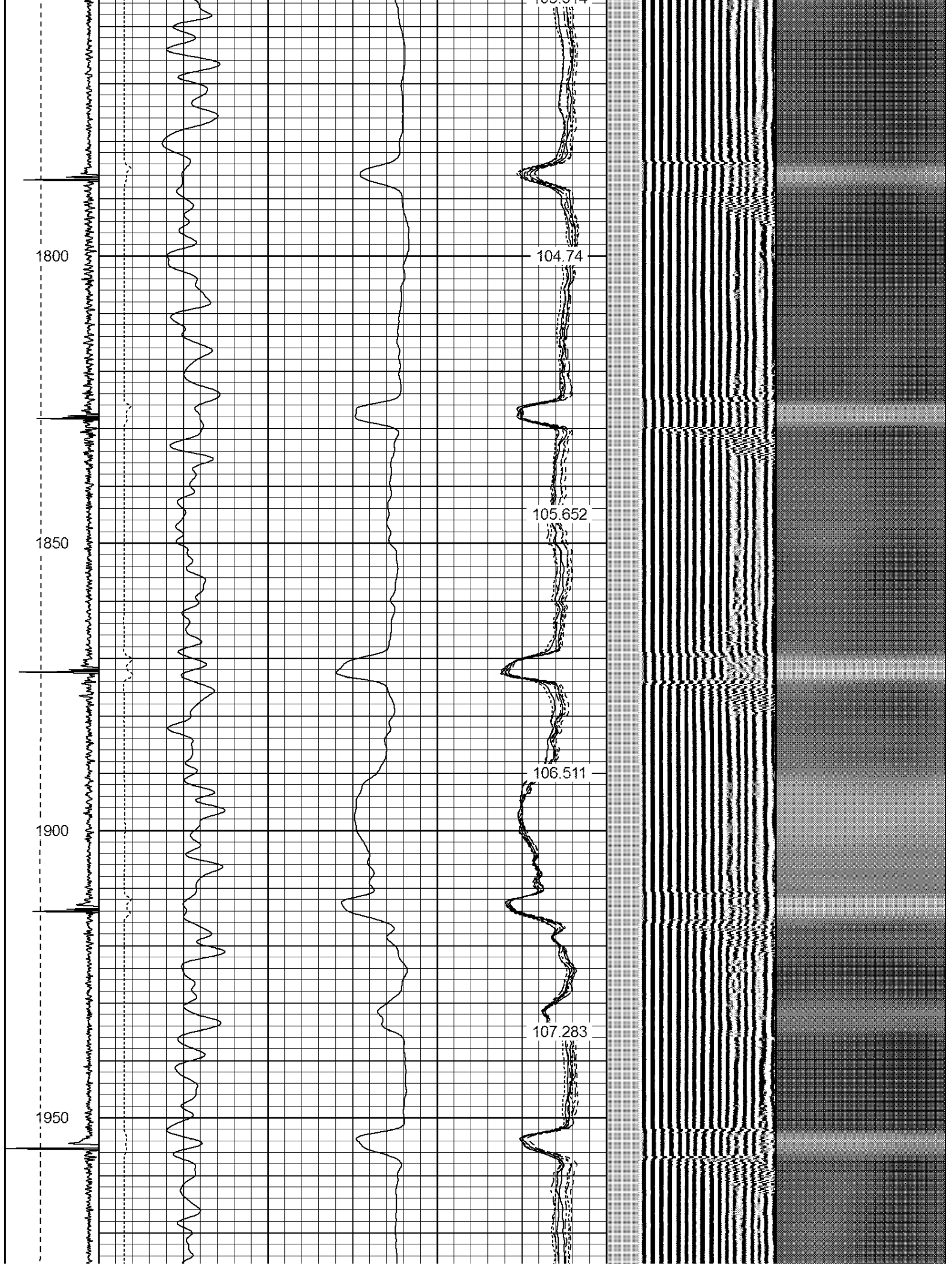


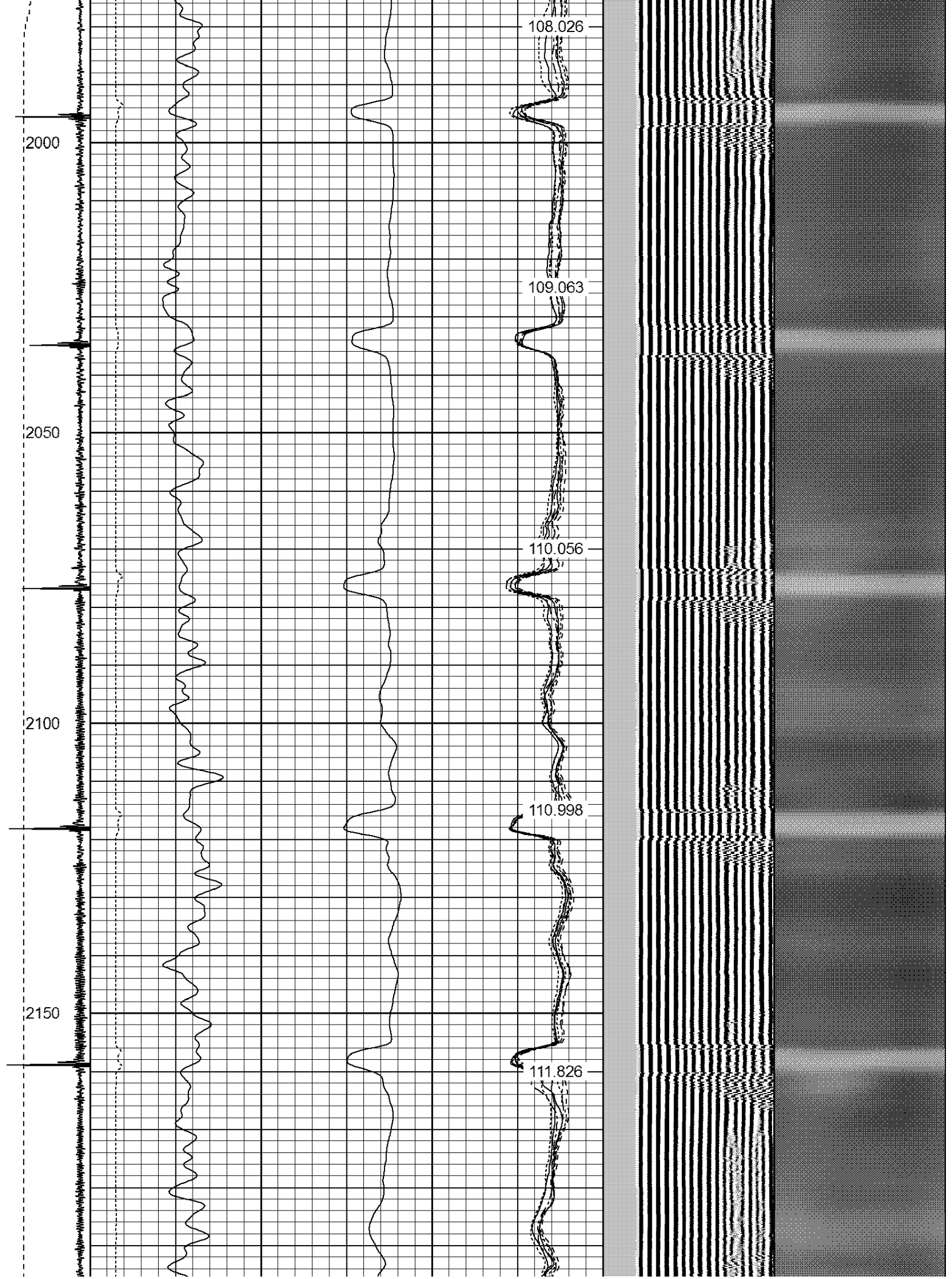


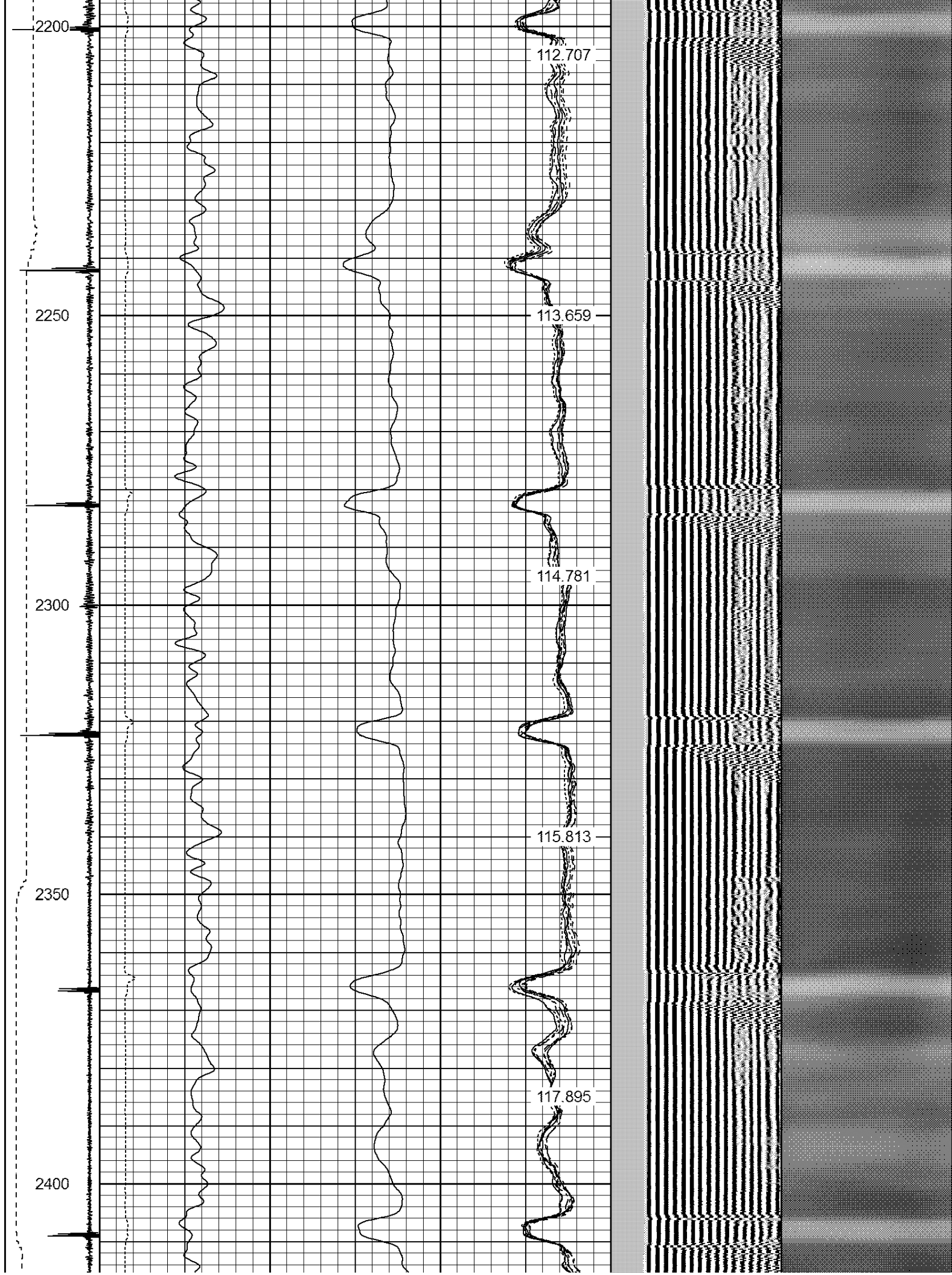


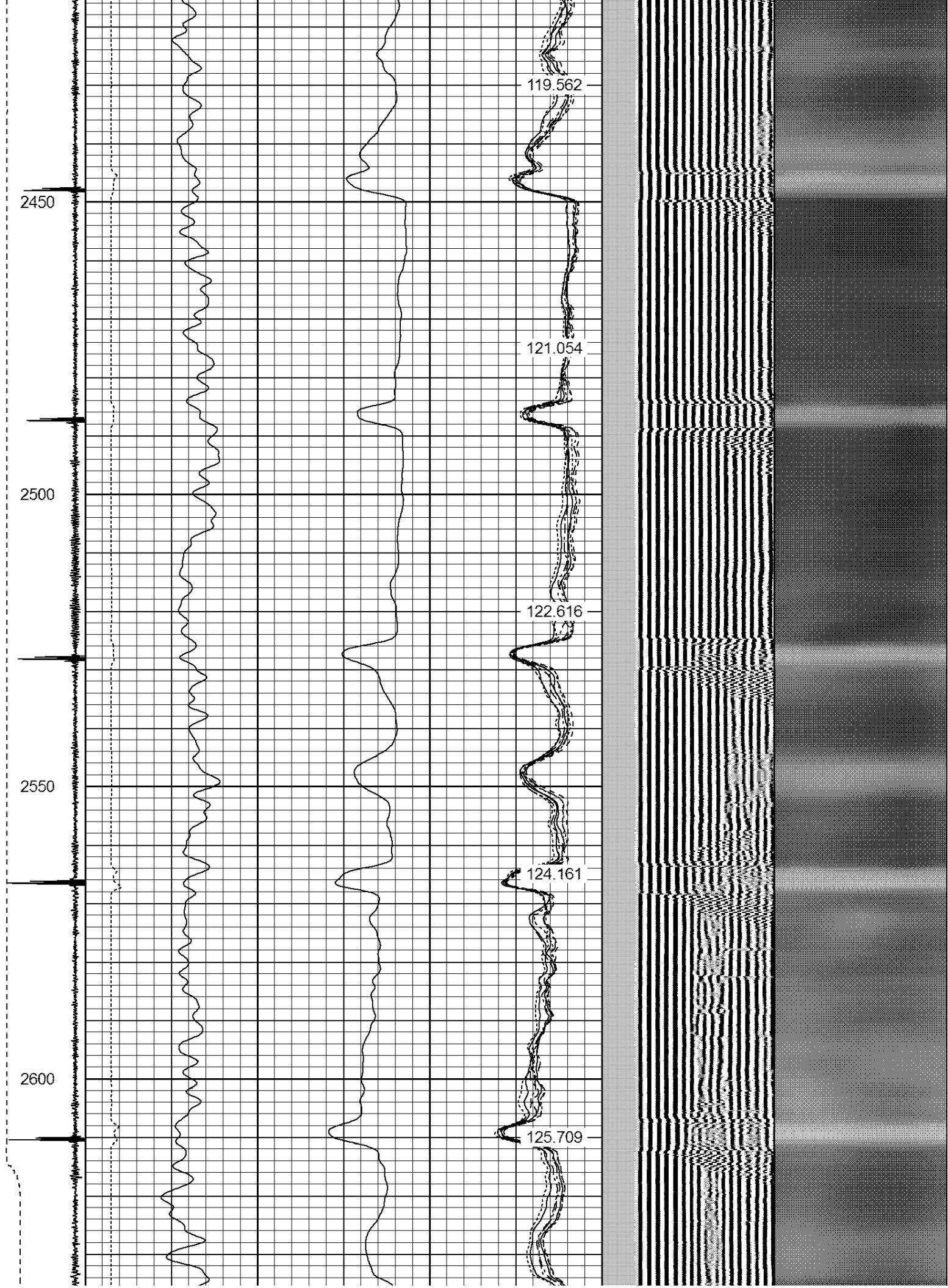


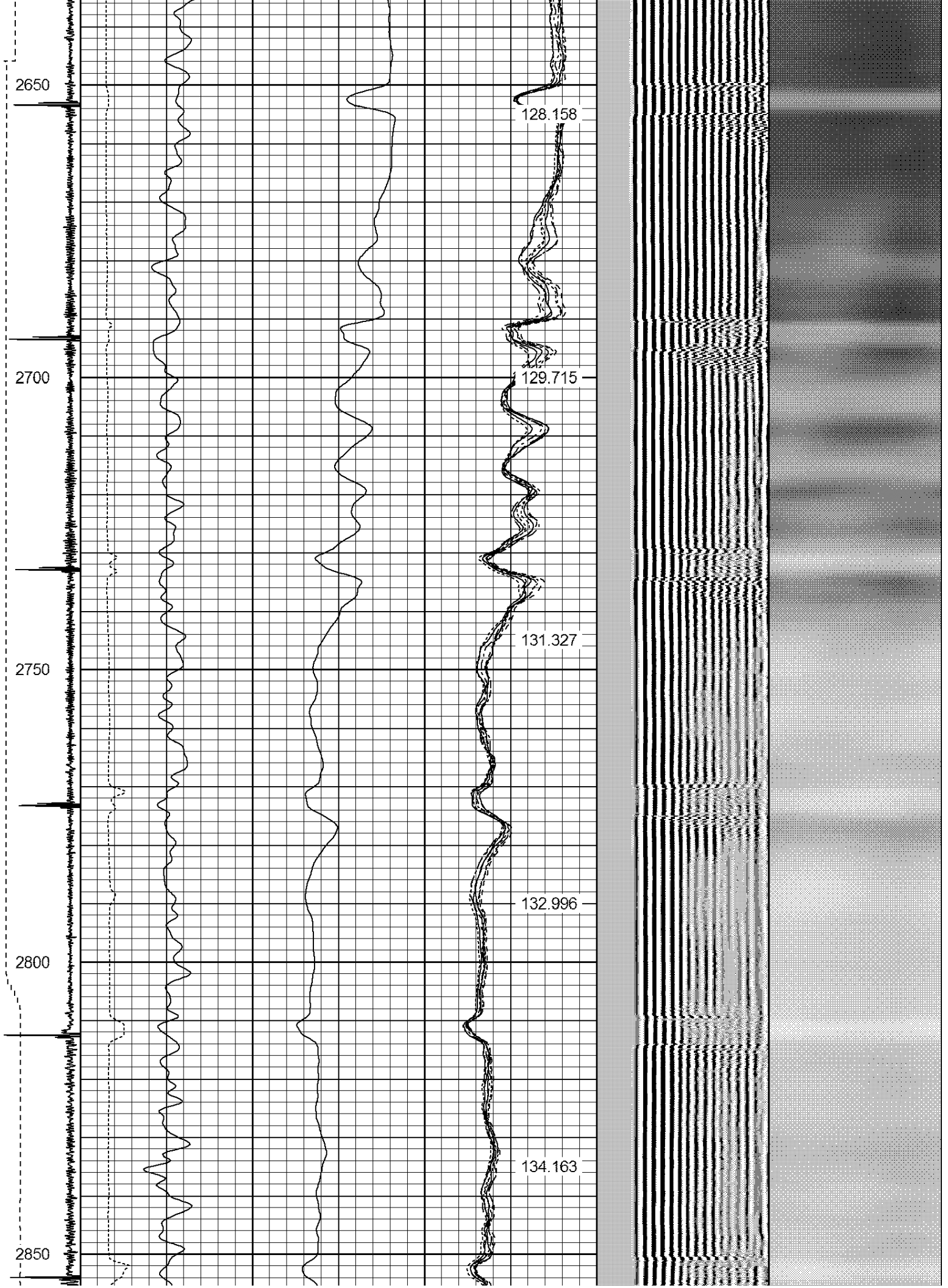


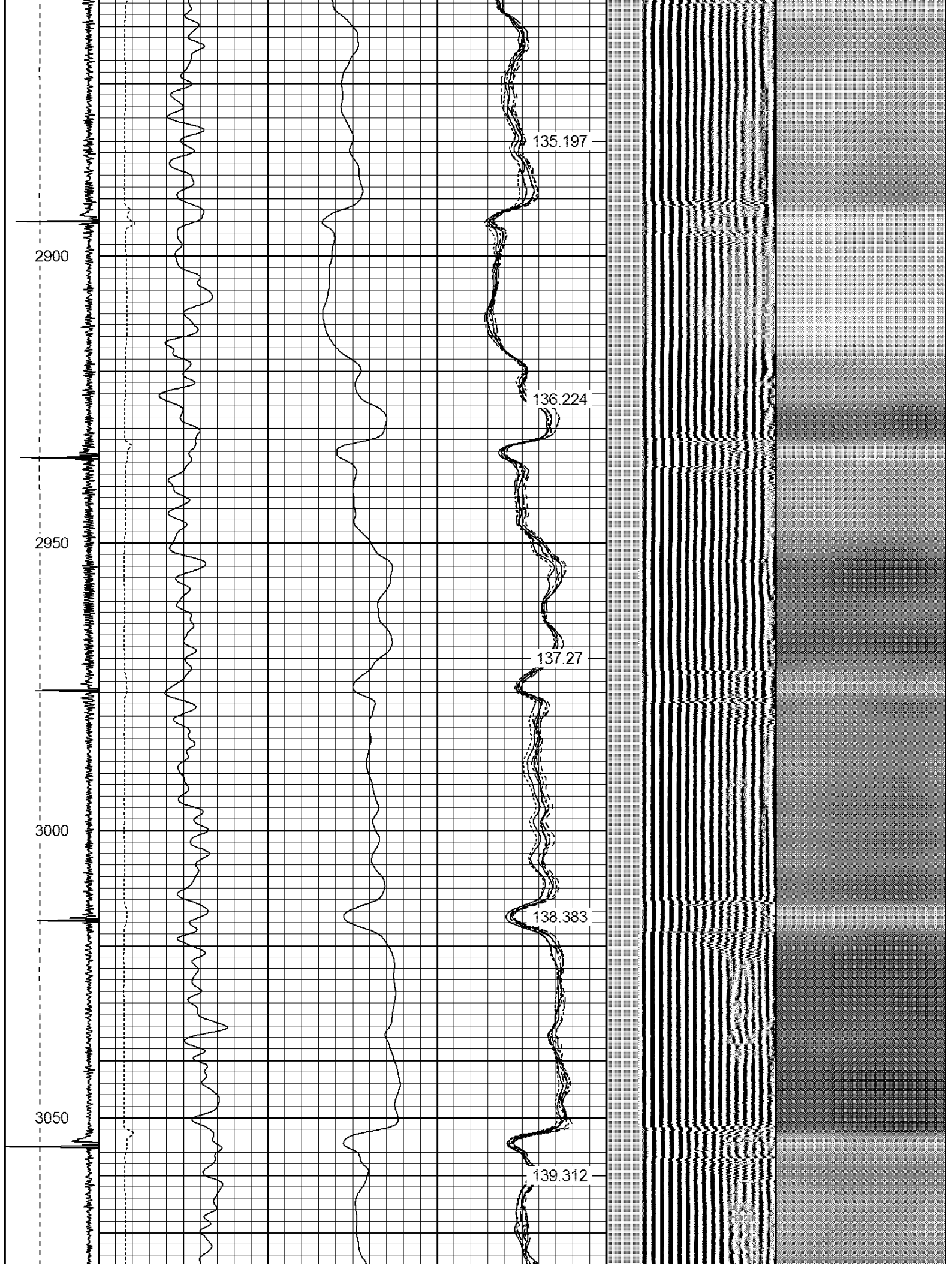


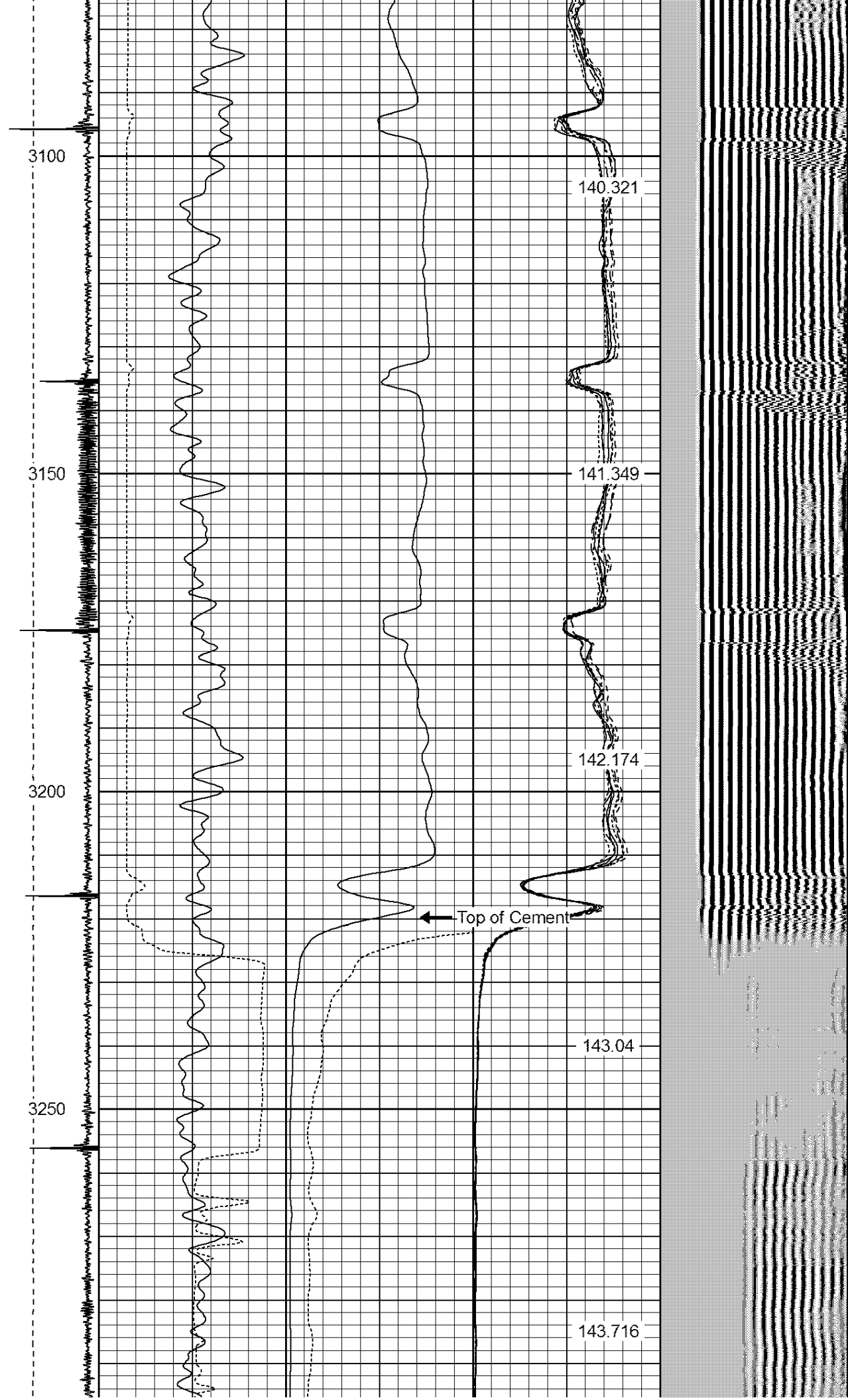


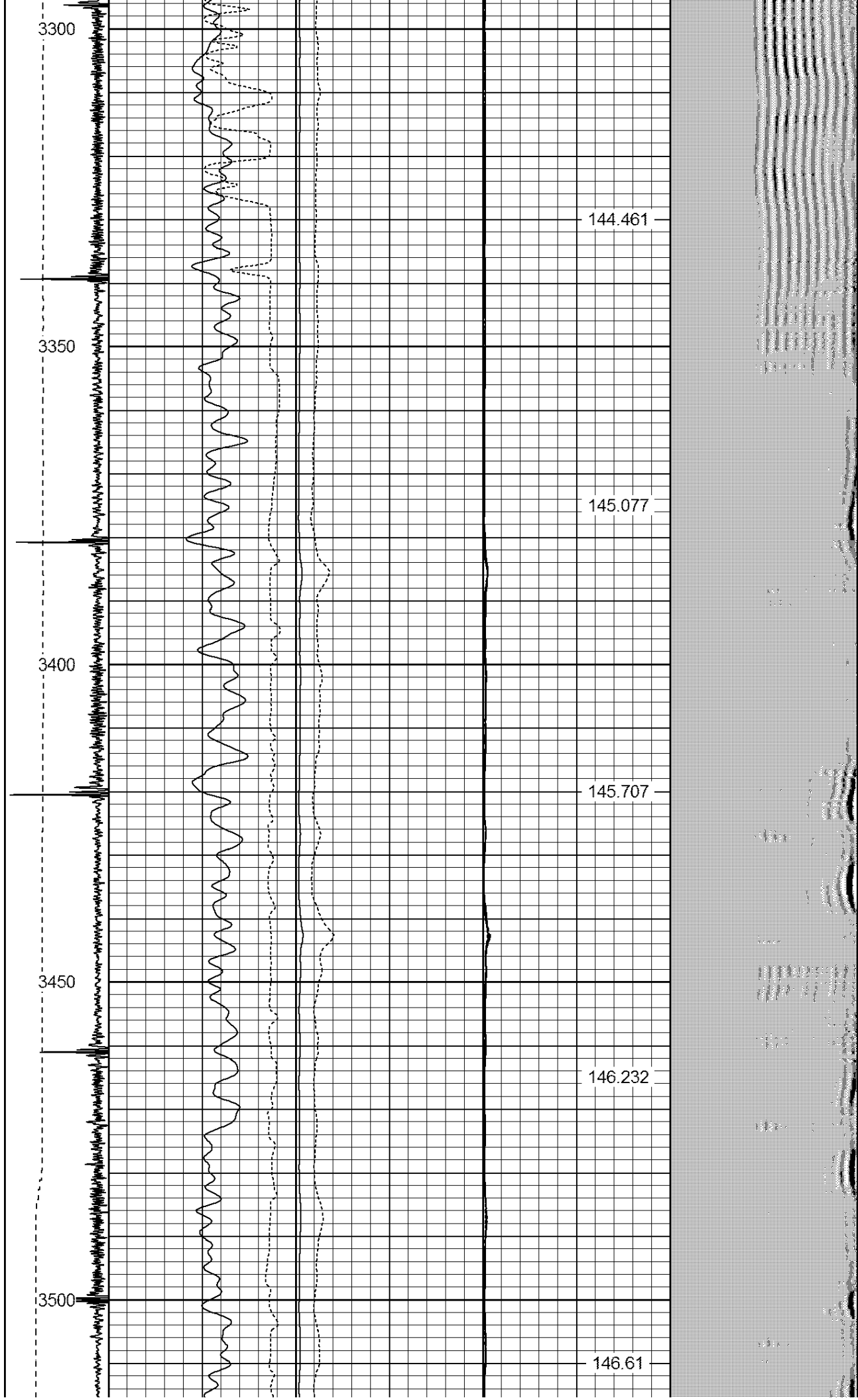


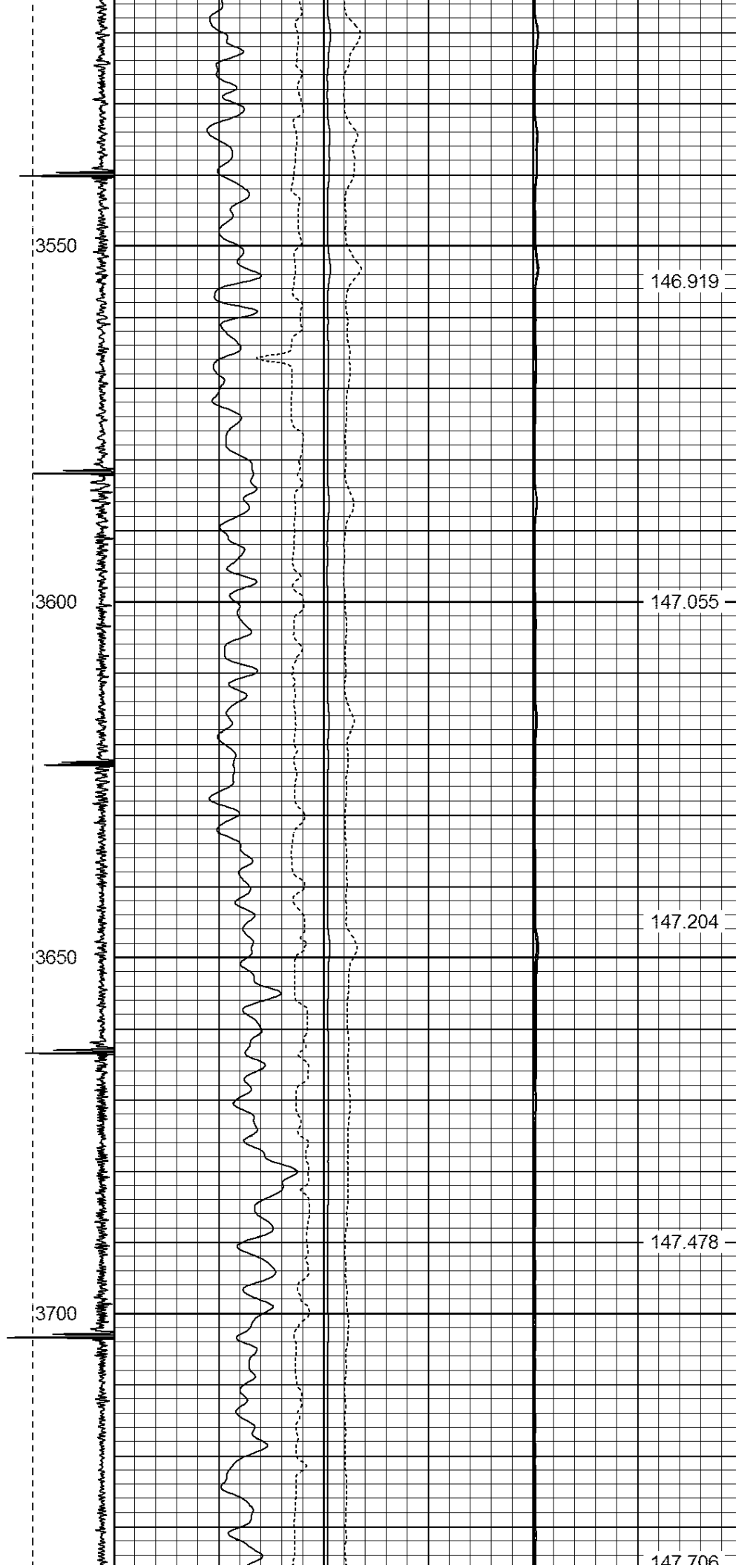




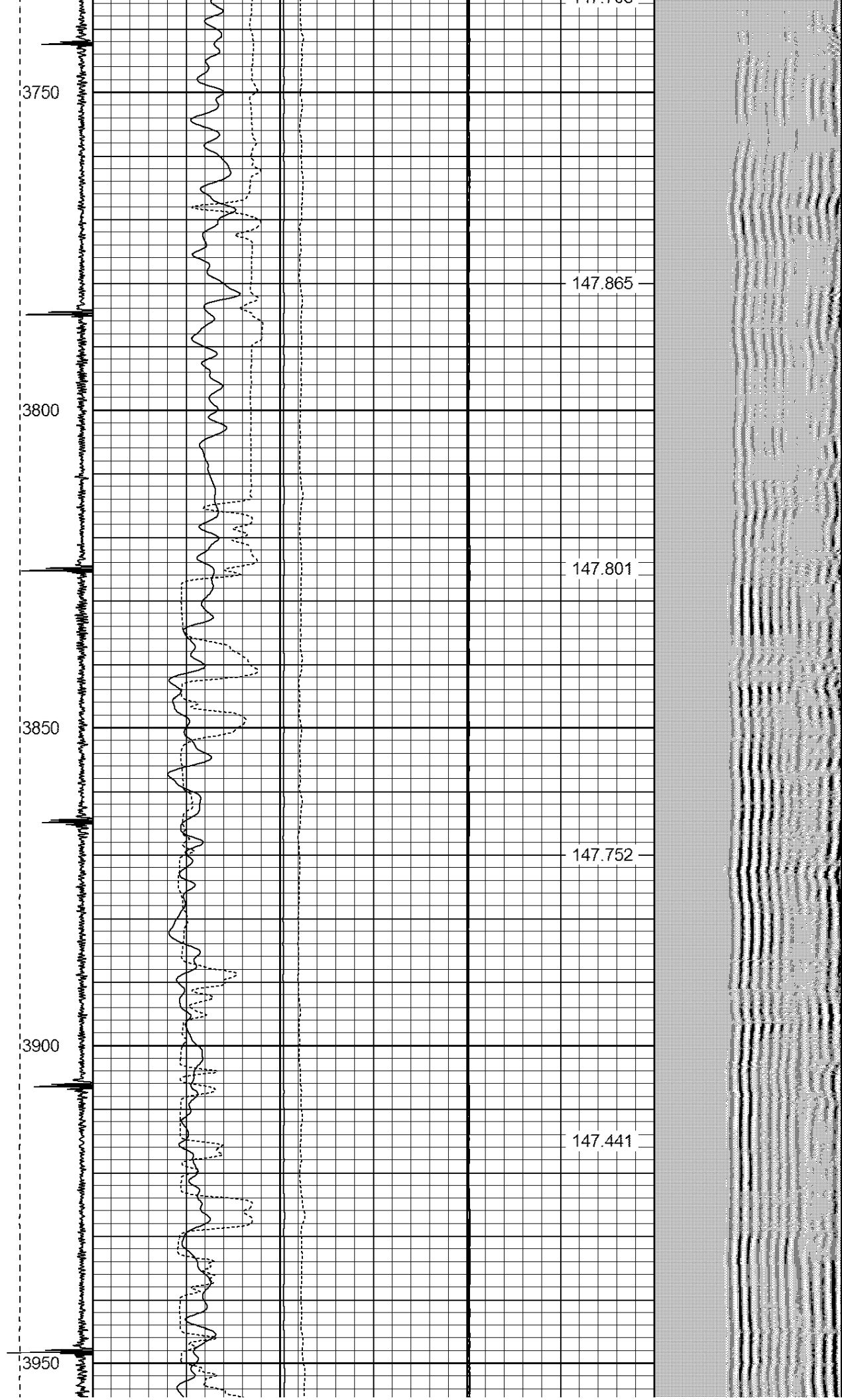


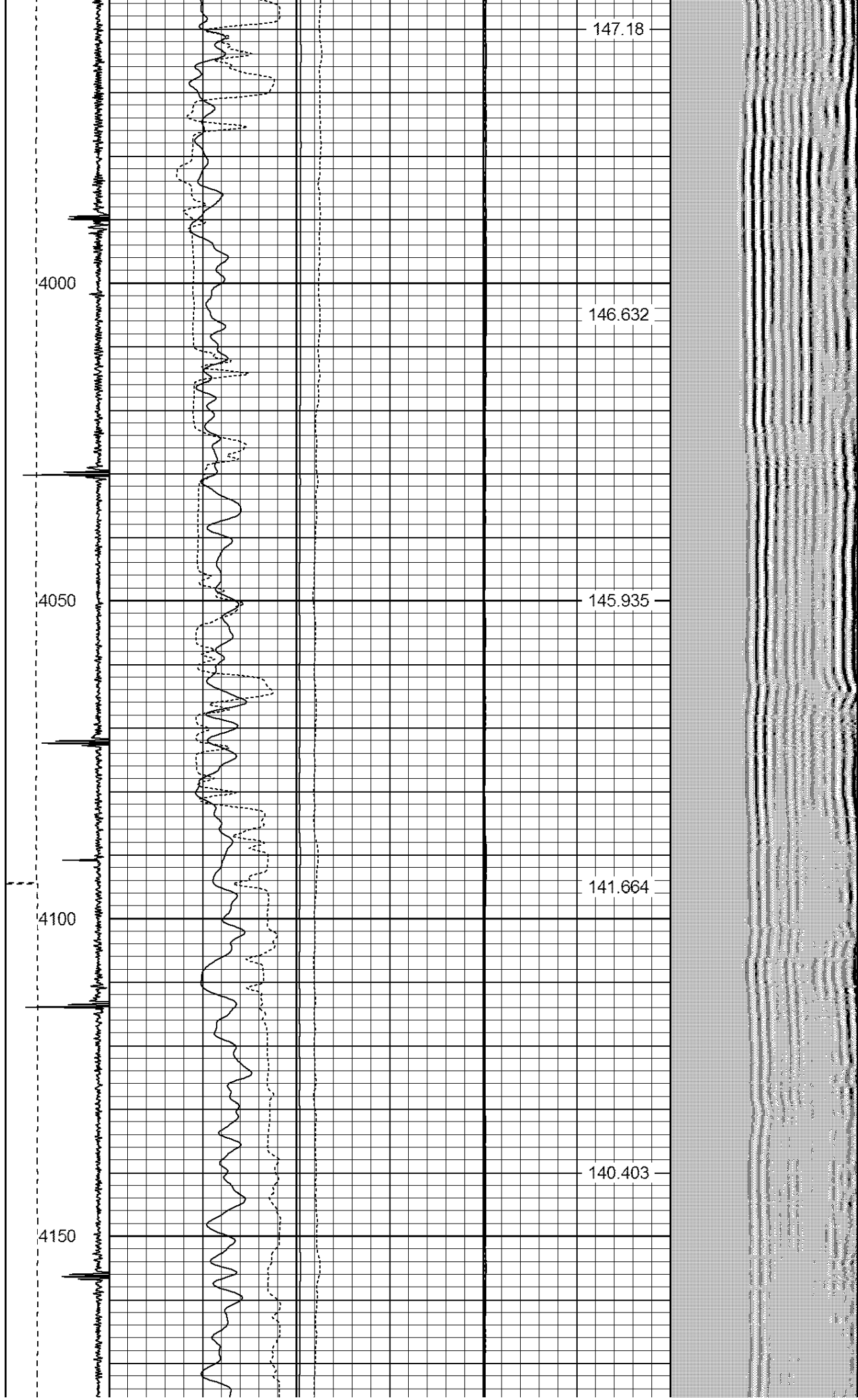


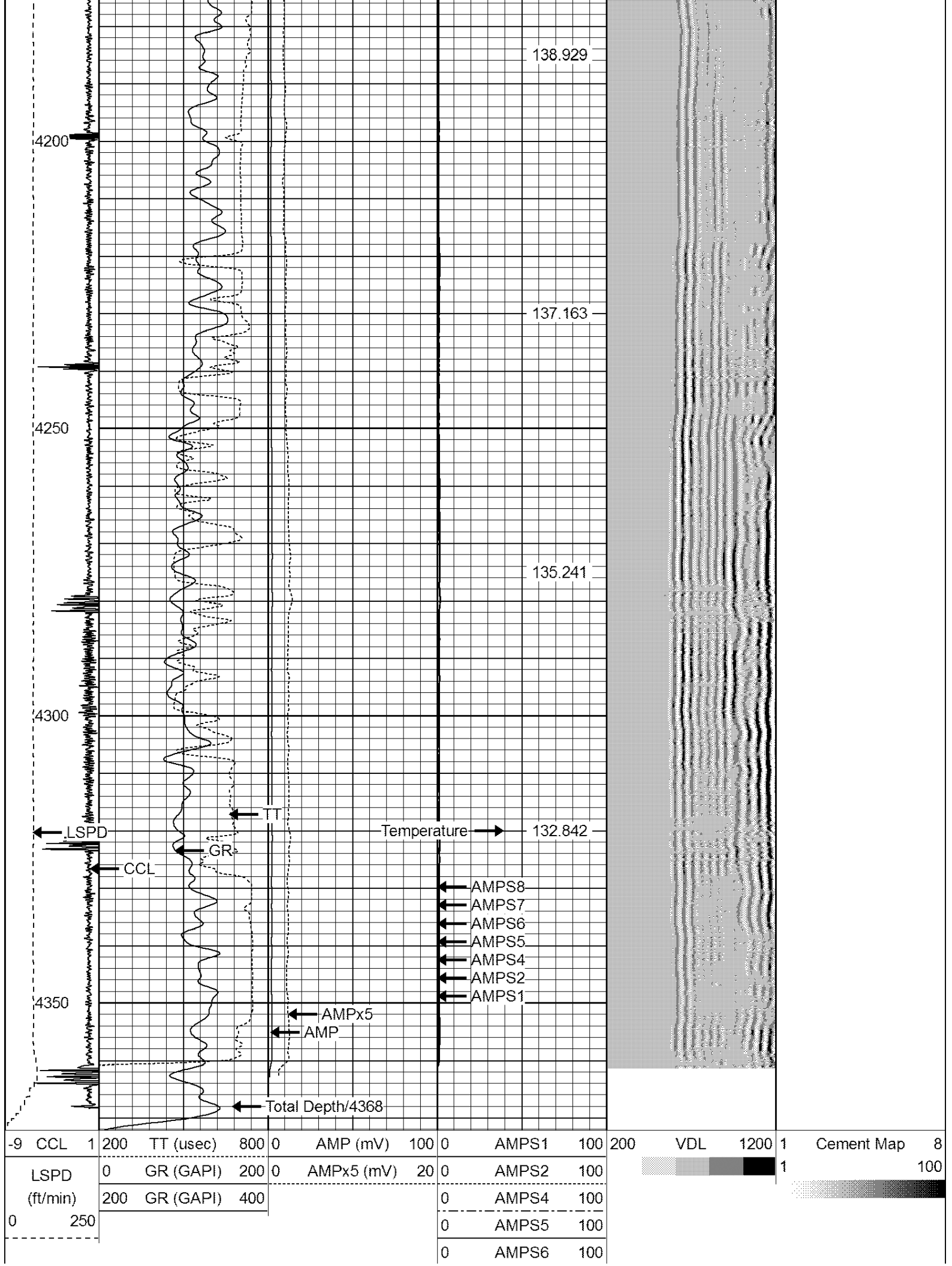




147.706

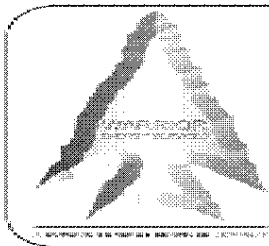






0	AMPS7	100
0	AMPS8	100

IntTemp (degF)



WARRIOR
ENERGY SERVICES

Company KERR-McGEE OIL & GAS ONSHORE LP

Well ARISTOCRAT 32-9 #2

Field WATTENBERG

County WELD

State COLORADO