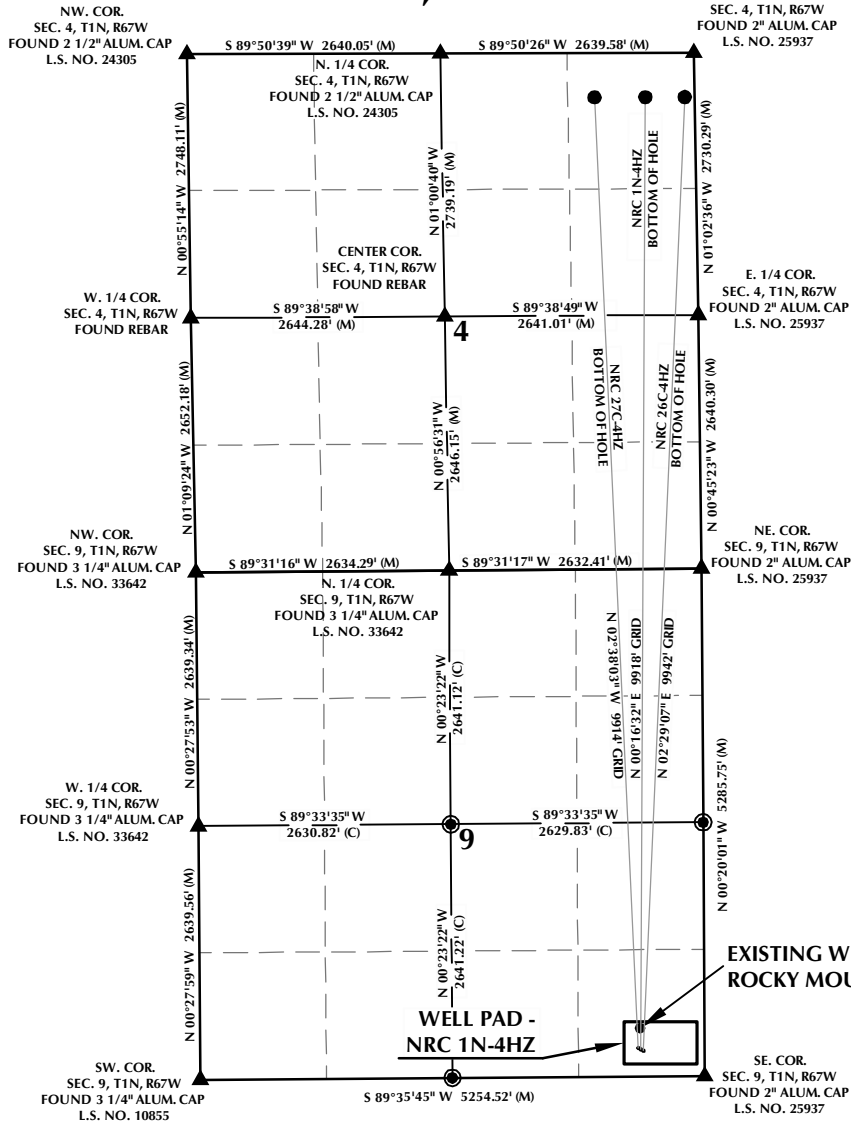


# NRC 1N-4HZ T1N, R67W

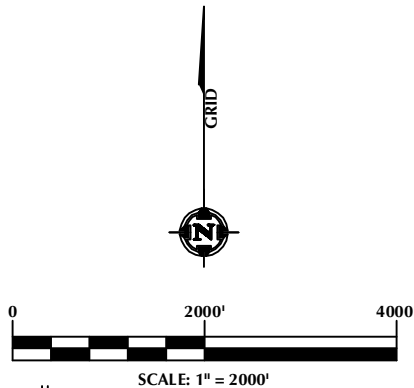


## WELL NOTES:

NRC 27C-4HZ  
SURFACE: 295' FSL, 690' FEL  
BOTTOM HOLE: 460' FNL, 1040' FEL  
NRC 1N-4HZ  
SURFACE: 281' FSL, 663' FEL  
BOTTOM HOLE: 460' FNL, 510' FEL  
NRC 26C-4HZ  
SURFACE: 267' FSL, 637' FEL  
BOTTOM HOLE: 460' FNL, 100' FEL

## NOTES:

1. ▲ INDICATES FOUND SECTION CORNER
2. ● INDICATES CALCULATED CORNER
3. BASIS OF BEARING DERIVED FROM COLORADO COORDINATE SYSTEM 1983 NORTH ZONE UNLESS OTHERWISE NOTED.
4. ALL MEASURED DISTANCES ARE GRID.
5. COMBINED SCALE FACTOR: .99972585
6. WELL FOOTAGES ARE MEASURED AT RIGHT ANGLES TO THE SECTION LINES.



## WELL PAD - NRC 1N-4HZ

INTERFERENCE DIAGRAM  
NRC 27C-4HZ,  
NRC 1N-4HZ & NRC 26C-4HZ  
LOCATED IN SECTIONS 4 & 9  
T1N, R67W, 6TH P.M.  
WELD COUNTY, COLORADO

**Kerr-McGee Oil &  
Gas Onshore L.P.**  
1099 18th Street  
Denver, Colorado 80202



## CONSULTING, LLC

SHERIDAN OFFICE  
2155 North Main Street  
Sheridan, Wyoming 82801  
Phone 307-674-0609

LOVELAND OFFICE  
1635 Foxtrail Drive, Suite 204  
Loveland, Colorado 80538  
Phone 970-776-4331

DRAFTED BY:	APF	CHECKED BY:	BJR
DATE DRAFTED:	5/9/13	DATE SURVEYED:	4/22/13
REVISED:	6/7/13	FILE NAME:	13-33