

HALLIBURTON

BILL BARRETT CORPORATION E-BILL

Winter #1
EATON
Weld County , Colorado

Plug to Abandon Service
28-Dec-2013

Job Site Documents

HALLIBURTON**Cementing Job Summary***The Road to Excellence Starts with Safety*

Sold To #: 343492		Ship To #: 2043311		Quote #:		Sales Order #: 901003319	
Customer: BILL BARRETT CORPORATION E-BILL				Customer Rep: Sanders, Kenny			
Well Name: Winter			Well #: #1		API/UWI #:		
Field: EATON		City (SAP): WINDSOR		County/Parish: Weld		State: Colorado	
Contractor: Workover			Rig/Platform Name/Num: Workover				
Job Purpose: Plug to Abandon Service							
Well Type: Development Well				Job Type: Plug to Abandon Service			
Sales Person: GREGORY, JON				Srvc Supervisor: VIGIL, NICHOLAS		MBU ID Emp #: 443481	

Job Personnel

HES Emp Name	Exp Hrs	Emp #	HES Emp Name	Exp Hrs	Emp #	HES Emp Name	Exp Hrs	Emp #
CARPENTER, JACOB P	7.5	499500	LANGE, TIMOTHY Paul	7.5	520811	ROMERO, JOSEPH M	4.5	512137
STIELER, KENT	4.5	554541	VIGIL, NICHOLAS Joseph	4.5	443481	WILEY, JAMES A	4.5	440080

Equipment

HES Unit #	Distance-1 way	HES Unit #	Distance-1 way	HES Unit #	Distance-1 way	HES Unit #	Distance-1 way
10857080C	40 mile	11398490	40 mile	11605598	40 mile	11633846C	40 mile
12010168	40 mile						

Job Hours

Date	On Location Hours	Operating Hours	Date	On Location Hours	Operating Hours	Date	On Location Hours	Operating Hours
12/28/13	7.5	4	12/29/13	4.5	1.5			

TOTAL Total is the sum of each column separately**Job****Job Times**

Formation Name	Formation Depth (MD)	Top	Bottom	Called Out	Date	Time	Time Zone
Form Type			BHST	On Location	28 - Dec - 2013	03:30	MST
Job depth MD	4700. ft		Job Depth TVD	4700. ft	28 - Dec - 2013	07:45	MST
Water Depth			Wk Ht Above Floor	Job Started	28 - Dec - 2013	00:00	MST
Perforation Depth (MD)	From		To	Job Completed	29 - Dec - 2013	11:15	MST
				Departed Loc	29 - Dec - 2013	12:15	MST

Well Data

Description	New / Used	Max pressure psig	Size In	ID in	Weight lbm/ft	Thread	Grade	Top MD ft	Bottom MD ft	Top TVD ft	Bottom TVD ft
4-1/2" Casing	Unknown		4.5	4.	11.6				7227.		
2-3/8" Tubing	Used		2.375	2.469					4700.		

Tools and Accessories

Type	Size	Qty	Make	Depth	Type	Size	Qty	Make	Depth	Type	Size	Qty	Make
Guide Shoe					Packer					Top Plug			
Float Shoe					Bridge Plug					Bottom Plug			
Float Collar					Retainer					SSR plug set			
Insert Float										Plug Container			
Stage Tool										Centralizers			

Miscellaneous Materials

Gelling Agt	Conc	Surfactant	Conc	Acid Type	Qty	Conc	%
Treatment Fld	Conc	Inhibitor	Conc	Sand Type	Size	Qty	

Fluid Data

Stage/Plug #: 1										
Fluid #	Stage Type	Fluid Name	Qty	Qty uom	Mixing Density lbm/gal	Yield ft/sk	Mix Fluid Gal/sk	Rate bbl/min	Total Mix Fluid Gal/sk	

Stage/Plug #: 1

Summit Version: 7.3.0109

Sunday, December 29, 2013 11:43:00

HALLIBURTON**Cementing Job Summary**

Stage/Plug #: 1									
Fluid #	Stage Type	Fluid Name	Qty	Qty uom	Mixing Density lbm/gal	Yield ft ³ /sk	Mix Fluid Gal/sk	Rate bbl/min	Total Mix Fluid Gal/sk
1	Squeeze#1 Plug#1	HALCEM (TM) SYSTEM (452986)	50.0	sacks	15.8	1.15	4.97		4.97
	4.97 Gal	FRESH WATER							
2	SQUEEZE #2 PLUG#2	SQUEEZECCEM (TM) SYSTEM (452971)	50.0	sacks	15.8	1.15	4.97		4.97
	4.97 Gal	FRESH WATER							
3	SQUEEZE #3 PLUG #3	SQUEEZECCEM (TM) SYSTEM (452971)	126.0	sacks	15.8	1.15	4.96		4.96
	4.96 Gal	FRESH WATER							
Calculated Values		Pressures		Volumes					
Displacement		Shut In: Instant		Lost Returns		Cement Slurry		Pad	
Top Of Cement	39'	5 Min		Cement Returns		Actual Displacement		Treatment	
Frac Gradient		15 Min		Spacers		Load and Breakdown		Total Job	
Rates									
Circulating		Mixing		Displacement		Avg. Job			
Cement Left In Pipe	Amount	0 ft	Reason	Shoe Joint					
Frac Ring # 1 @	ID	Frac ring # 2 @	ID	Frac Ring # 3 @	ID	Frac Ring # 4 @	ID		
The Information Stated Herein Is Correct				Customer Representative Signature					

HALLIBURTON**Cementing Job Log***The Road to Excellence Starts with Safety*

The Road to Excellence Starts with Safety

Sold To #: 343492	Ship To #: 2043311	Quote #:	Sales Order #: 901003319
Customer: BILL BARRETT CORPORATION E-BILL		Customer Rep: Sanders, Kenny	
Well Name: Winter		Well #: #1	API/UWI #:
Field: EATON	City (SAP): WINDSOR	County/Parish: Weld	State: Colorado
Legal Description:			
Lat:		Long:	
Contractor: Workover		Rig/Platform Name/Num: Workover	
Job Purpose: Plug to Abandon Service			Ticket Amount:
Well Type: Development Well		Job Type: Plug to Abandon Service	
Sales Person: GREGORY, JON		Srvc Supervisor: VIGIL, NICHOLAS	MBU ID Emp #: 443481

Activity Description	Date/Time	Cht #	Rate bbl/ min	Volume bbl		Pressure psig		Comments
				Stage	Total	Tubing	Casing	
Call Out	12/28/2013 03:30							
Depart Yard Safety Meeting	12/28/2013 05:45							JSA on job materials, pre-tripping trucks, and driving to location
Arrive at Location from Service Center	12/28/2013 07:45							Arrived on time to location, rig is ready
Assessment Of Location Safety Meeting	12/28/2013 07:50							Hazard Hunt on location before spotting in trucks
Safety Meeting - Pre Rig-Up	12/28/2013 07:55							JSA on rigging up bulk trucks and iron to rig
Rig-Up Equipment	12/28/2013 08:00							
Rig-Up Completed	12/28/2013 08:20							
Safety Meeting - Pre Job	12/28/2013 08:30							JSA with Company man, Rig hands, and HES hands on pump schedule
Start Job	12/28/2013 08:53							First Plug at 4707' to 4800
Other	12/28/2013 08:55		1	3			240.0	200psi On Back side Close in
Test Lines	12/28/2013 09:01							4000psi Pressure Test
Other	12/28/2013 09:05		1.5	6	9	1930.0		Injection rate 1.5bbl/min=1930psi
Pump Cement	12/28/2013 09:26		1.5	10.2	19.2	1530.0		50sks PlugCem, 15.8ppg, 1.15yield, 4.97gal/sk, Mixed with water off Water truck and # verify by pressurized mud scales
Pump Displacement	12/28/2013 09:35		1.5	16.3	35.5	1360.0		16.3bbls H2O displacment to leave 5sks spotted on retainer

Sold To #: 343492

Ship To #: 2043311

Quote #:

Sales Order #: 901003319

SUMMIT Version: 7.3.0109

Sunday, December 29, 2013 11:43:00

Activity Description	Date/Time	Cht #	Rate bbl/min	Volume bbl		Pressure psig		Comments
				Stage	Total	Tubing	Casing	
Shutdown	12/28/2013 09:43							Hold PSI while sting out of retainer
Other	12/28/2013 10:00							Wireline go in to perf at 4490'
Other	12/28/2013 13:31							200psi on Back side Shut in
Other	12/28/2013 13:36							Injection rate for 2nd Plug 4400' 1.5bbl/min=2330psi
Pump Cement	12/28/2013 13:53							50sks PlugCem, 15.8ppg, 1.15yield, 4.97gal/sk, Mixed with water off Water truck and # verify by pressurized mud scales
Pump Displacement	12/28/2013 14:00							15.4bbls H2O displacment
Shutdown	12/28/2013 14:11							Shutdown sting out
Other	12/28/2013 15:30							Crew leaves location at 15:30/// Company Man Kenny Sanders wants to wait to 12/29/13 to finish Last Surface Plug
Arrive At Loc	12/29/2013 07:20							On location time was 0700, Rig was getting rigged up on arrival
Assessment Of Location Safety Meeting	12/29/2013 07:25							Hazard hunt,Rig up safety meeting
Rig-Up Equipment	12/29/2013 07:30							
Rig-Up Completed	12/29/2013 08:00							
Pre-Job Safety Meeting	12/29/2013 08:05							
Start Job	12/29/2013 09:21							
Test Lines	12/29/2013 09:37							Pressure tested lines to 3000 psi
Establish Rate	12/29/2013 09:42							Tried to get an ijection rate but well would not let us get anything into it.
Comment	12/29/2013 10:56							Company man made a phone call and they decided to do a 150' balance plug. Rig POOH took of retainer and ran back in to 205'

HALLIBURTON***Cementing Job Log***

Activity Description	Date/Time	Cht #	Rate bbl/ min	Volume bbl		Pressure psig		Comments
				Stage	Total	Tubing	Casing	
Circulate Well	12/29/2013 11:06		2	10			16.0	Pumped water to clear well of contaminants
Pump Cement	12/29/2013 11:12		2	2.3			20.0	15.8 ppg Cement (12 sks), weight was verified by scale
Pump Displacement	12/29/2013 11:13		2	0.6			25.0	Fresh water
End Job	12/29/2013 11:13							Rig down safety meeting
Rig-Down Equipment	12/29/2013 11:20							
Rig-Down Completed	12/29/2013 11:45							

Sold To # : 343492

Ship To # :2043311

Quote # :

Sales Order # : 901003319

SUMMIT Version: 7.3.0109

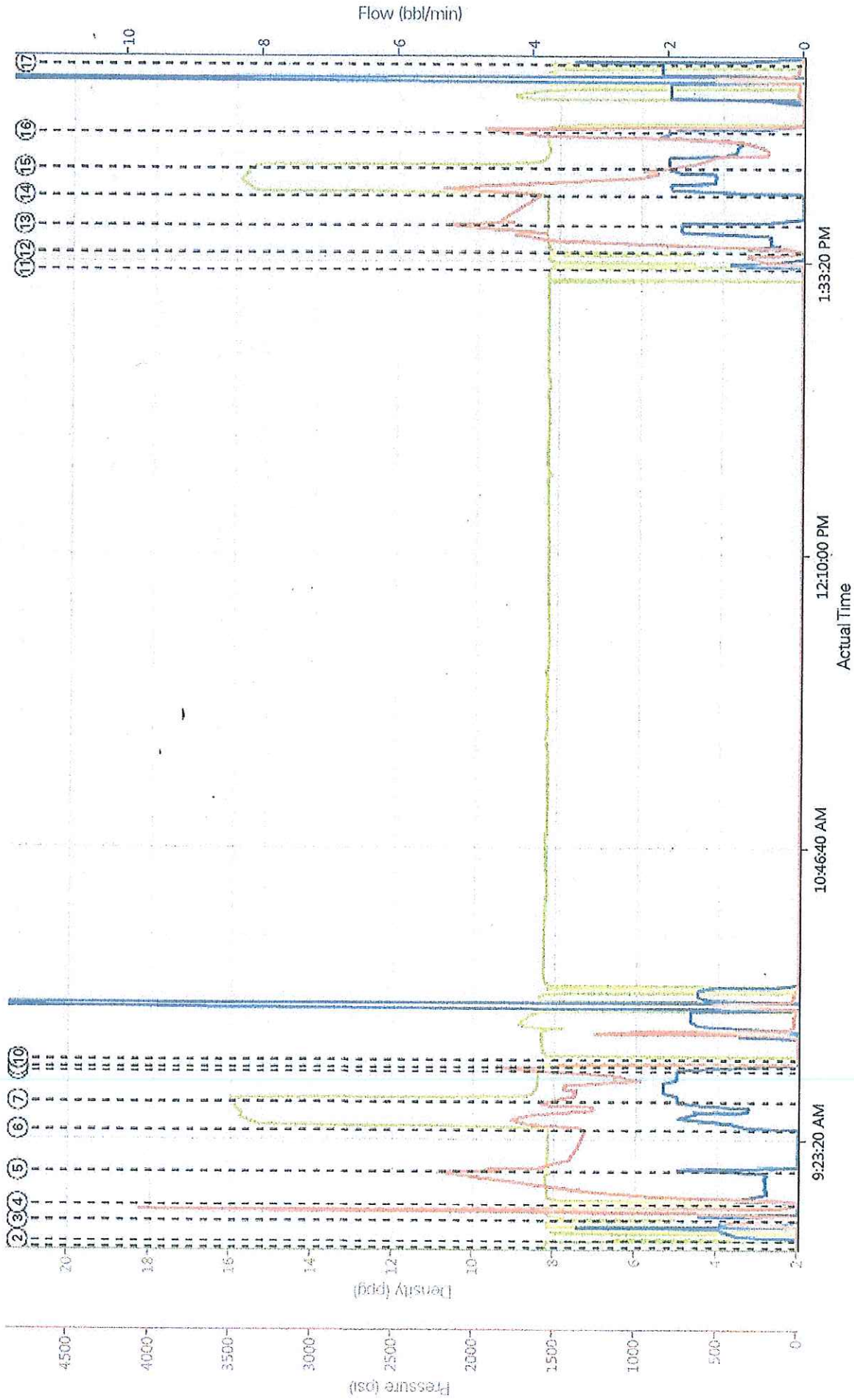
Sunday, December 29, 2013 11:43:00

HALLIBURTON

BILL BARRETT CORPORATION E-BILL
901003319
Bill Barrett Winter #1

3.5 Job Event Log

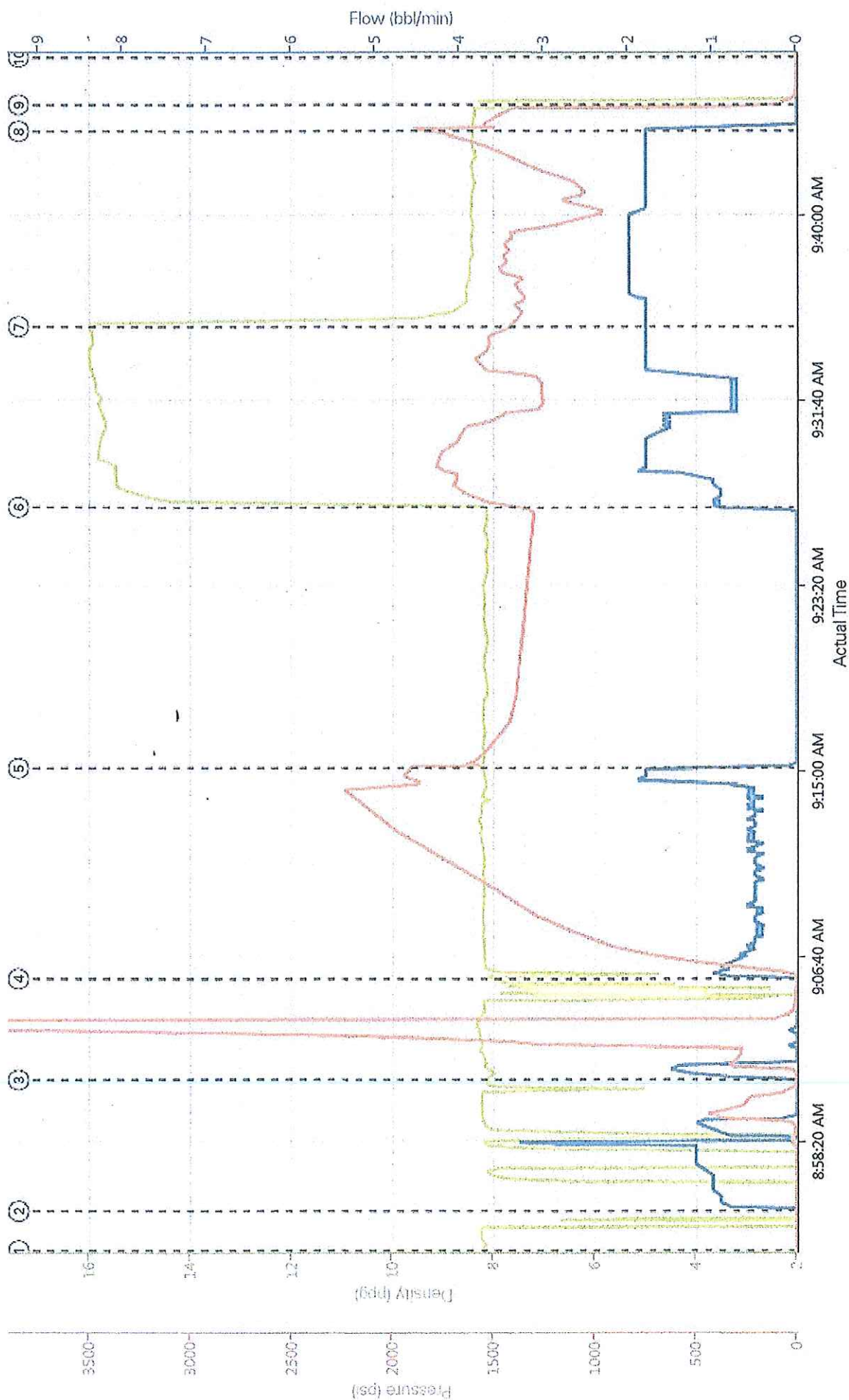
Time	Description	Graph Label	Downhole Density (ppg)	Combined Pump Rate (bbl/min)	Pass-Side Pump Pressure (psi)	Comment
08:53:35	Start Job	Start Job	8.13	0.00	3.00	
08:55:22	Other	Other	-0.20	0.00	3.00	200psi on back side, Shut in
09:01:16	Test Lines	Test Lines	8.06	0.90	4.00	4000psi Pressure Test
09:05:48	Other	Other	8.08	0.90	6.00	Injection Rate 1.5bbl/min=1930psi
09:15:16	Shutdown	Shutdown	8.22	0.00	1619.00	Mix up 15.8ppg Cmt
09:26:58	Pump Cement	Pump Cement	12.41	1.00	1483.00	50sks 15.8ppg Cmt (10.2bbbls)
09:35:05	Pump Displacement	Pump Displacement	15.97	1.80	1387.00	Displace 16.3bbbls H2O
09:43:53	Shutdown	Shutdown	8.41	0.00	1682.00	Shutdown leave Psi on
09:45:04	Other	Other	8.33	0.00	55.00	Sting out
09:47:11	Other	Other	5.00	0.00	0.00	Rig hands pull out for wire line
01:31:55	Other	Other	0.16	0.90	7.00	200psi on back side, Shut in
01:36:56	Other	Other	8.25	0.90	15.00	Injection rate 1.5bbl/min 2330psi
01:44:37	Shutdown	Shutdown				Mix up 15.8ppg Cmt
01:53:04	Pump Cement	Pump Cement	13.41	0.90	1861.00	50sks 15.8ppg Cmt
02:00:52	Pump Displacement	Pump Displacement	15.39	2.00	738.00	Displace 15.4bbbls H2O
02:11:04	Shutdown	Shutdown	8.37	0.60	1703.00	Shutdown hold psi and sting out
02:30:21	End Job	End Job				



DH Density (ppg) Comb Pump Rate (bbl/min) PS Pump Press (psi)

Start Job	12:0:3	④ Other	0.9:6	⑦ Pump Displacement	1.8:1387	⑩ Other	0:0	⑬ Shutdown	0.6:1703
Other	0.9:3	⑤ Shutdown	0.22:0:1819	⑧ Shutdown	0.10:0:1488	⑪ Other	0.9:7	⑭ Pump Cement	0.9:1881
Test Lines	0.9:4	⑥ Pump Cement	1.2:1:1493	⑨ Other	0.5:0:58	⑫ Other	0.9:15	⑮ Pump Displacement	1.3:2:738

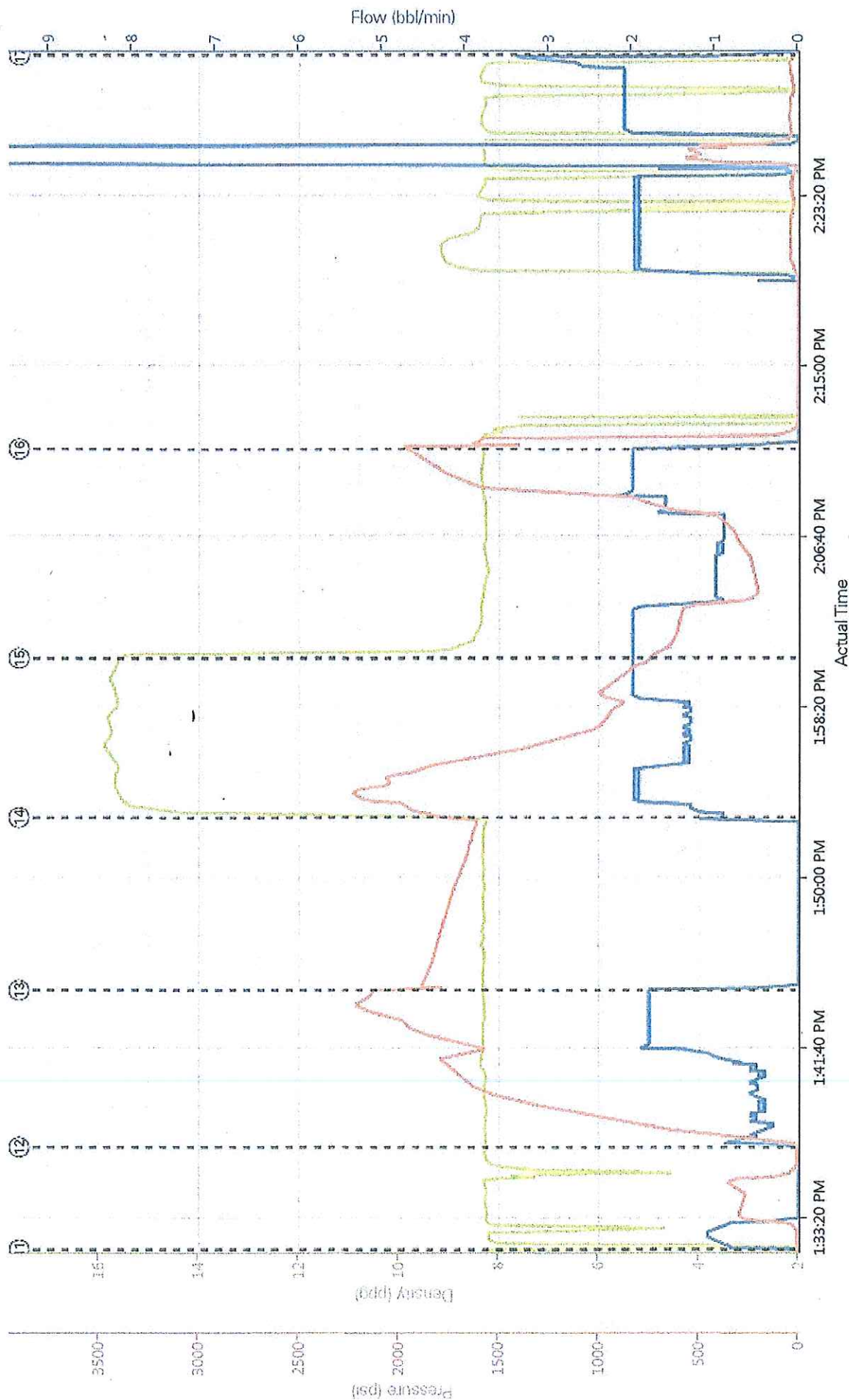
Bill Barrett Corp. Winter #1 PTA 12-28-13 // 1st Plug at 4707'



DH Density (ppg) Comb Pump Rate (bbl/min) PS Pump Press (psi)

Start Job 12/28/13 0:3 ④ Other 0:00 0:9/8 ⑦ Pump Displacement 15,000 1:8/1387 ⑩ Other 0:0 ⑬ Shutdown 0:0 n/a/n/a ⑮ End Job 0:0 n/a/n/a
 Other 12/28/13 0:3 ⑤ Shutdown 0:00 0:1613 ⑧ Shutdown 0:00 0:1438 ⑪ Other 0:25 0:10 ⑭ Pump Cement 0:30 0:1610
 Test Lines 0:30 0:9/4 ⑥ Pump Cement 0:12 0:1/1483 ⑨ Other 0:25 0:55 ⑫ Other 0:0 n/a/n/a ⑯ Pump Displacement 0:30 2,742

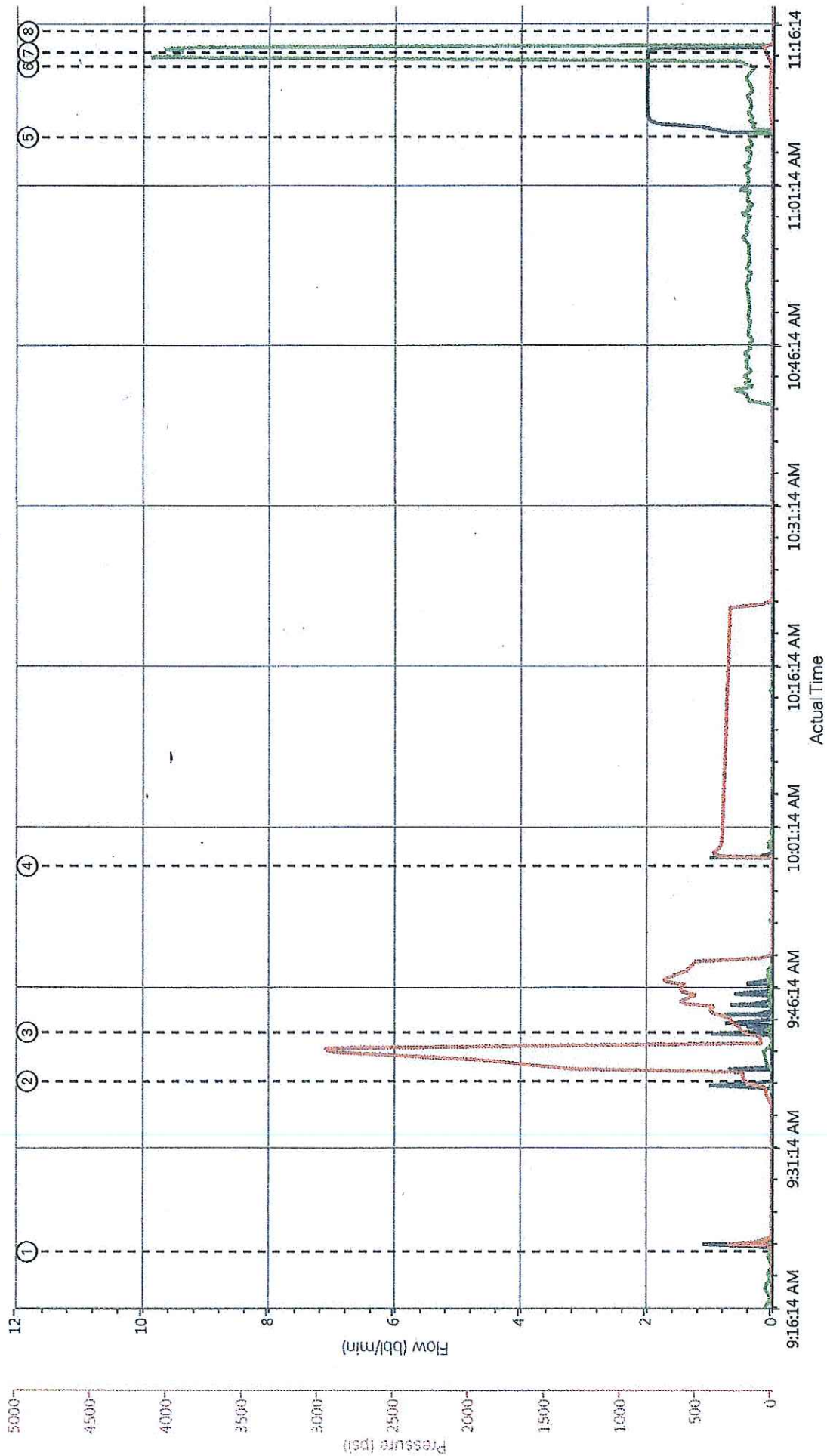
Bill Barrett Corp. Winter #1 PTA 12-28-13 // 2nd Plug at 4400'



DH Density (ppg) Comb Pump Rate (bbl/min) PS Pump Press (psi)

Start Job 12-0:3 ④ Other 12-0:3 ⑦ Pump Displacement 12-0:3 1,1387 ⑩ Other 0:0 ⑬ Shutdown 12-0:3 0.6,1703
 Other 12-0:3 ⑤ Shutdown 12-0:3 1,1619 ⑪ Other 0:3 0.9,7 ⑭ Pump Cement 12-0:3 0.9,1861 ⑯ End Job 12-0:3
 Test Lines 12-0:3 ⑥ Pump Cement 12-0:3 1,1483 ⑫ Other 0:3 0.9,15 ⑮ Pump Displacement 12-0:3 2,739

Bill Barret Winter #1 Surface Plug



Comb Pump Rate (bbl/min) 1 DH Density (ppg) 15.1 PS Pump Press (psi) 3

Start Job ② Test Lines ③ Injection Test ④ Injection Test ⑤ 15.8 ppg Cement ⑥ Pump Cement ⑦ Pump Displacement ⑧ End Job

HALLIBURTON | iCem® Service

Created: 2013-12-29 07:31:15, Version: 3.0.121

Customer: BILL BARRETT CORPORATION E-BILL

Job Date: 12/29/2013 7:32:03 AM

Well: Winter #1

Representative: Nicholas Vigil

Sales Order #: 901003319