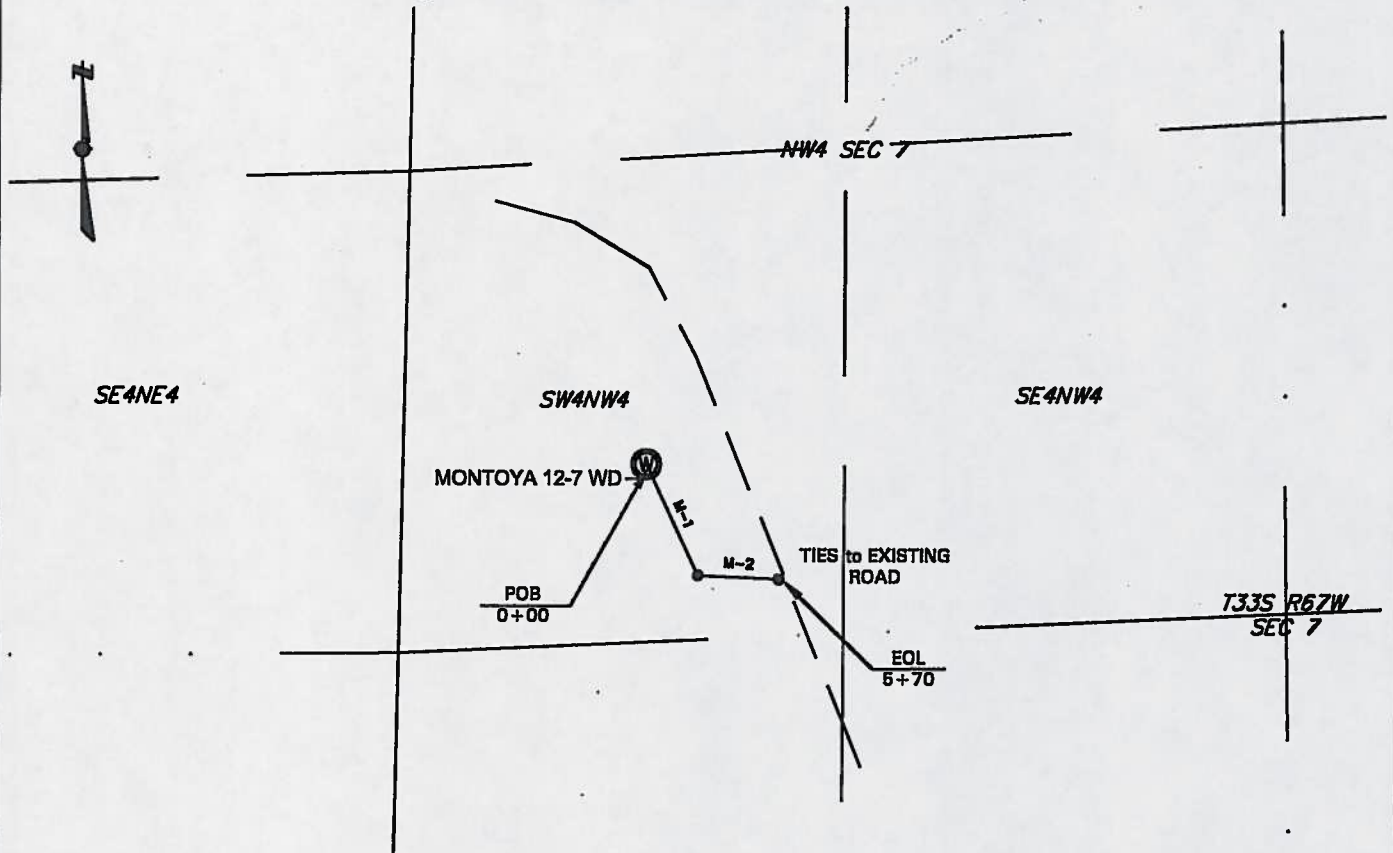


Proposed ROW for Montoya 12-7 WD



LEGEND:

- = WELL LOCATION
- = PROPOSED R.O.W.
- = EXISTING R.O.W.
- = SECTION LINES
- = CALCULATED SECTION LINES
- = CALCULATED 1/4
- = CALCULATED 1/16

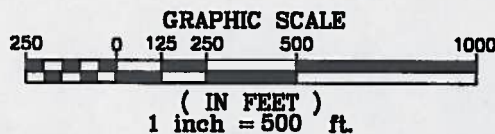
ROW TABLE						
Sec - Township - Range	1/4 Section	Width	Feet	Rods	Miles	Acres
7 - T33S - R67W	SW4NW4	60	570	34.5	0.11	0.79
Total:			570	34.5	0.11	0.79

MONTOKA LINE TABLE		
LINE	BEARING	LENGTH
M-1	S25°23'19"E	339
M-2	S87°32'47"E	231
Total:		570

NOTICE:

SOME INFORMATION SHOWN HEREON IS BASED ON INFORMATION TAKEN FROM RECORD INFORMATION, PREVIOUS SURVEYS, PLATS AND SURVEYS BY OTHER SURVEYORS, OR COLLATERAL EVIDENCE AND MAY NOT REFLECT THAT WHICH MAY BE DISCLOSED BY A COMPLETE BOUNDARY SURVEY. THIS SKETCH IS NOT TO BE RELIED UPON FOR THE ESTABLISHMENT OF SURFACE BOUNDARIES, FENCES, BUILDINGS, OR OTHER FUTURE IMPROVEMENTS.

Norman Scott Weese
 Norman Scott Weese, CO PLS #38116
 Date: January 28, 2010



Pioneer Natural Resources USA, Inc.
 PROPOSED ROW
 FOR

Montoya 12-7 WD
 Sec 7, T33S, R67W 6th P.M.
 Las Animas County, Colorado

SHIELDS SURVEY L^{td}. Co.
 Raton, New Mexico 87740
 (575)445-1232