

R 68 67
R 68 67
T6N, R67W, 6th P.M.

West 1/4 Cor. Sec. 19,
1998 Alum. Cap. 0.4'
Below Ground, Found
in Monument Box at
Rd. Intersection
Lot: 40.412189
Long: 104.926436
S88°39'47"W
1251.68' (Meas.)

GREAT WESTERN OIL & GAS COMPANY
Well location, RAINDANCE FD 30-022HN,
located as shown in the SE 1/4 SW 1/4 of
Section 30, T6N, R67W, 6th P.M., Weld County,
Colorado.

1998 Alum. Cap.
0.2' Below Ground,
Found in Monument
Box, L.S. #23513
Lot: 40.464803
Long: 104.944131
S88°52'51"W - 2417.82' (Meas.)

2011 Alum. Cap.
0.2' High,
Lot: 40.461942
Long: 104.935850
S88°41'13"W
1251.78' (Meas.)

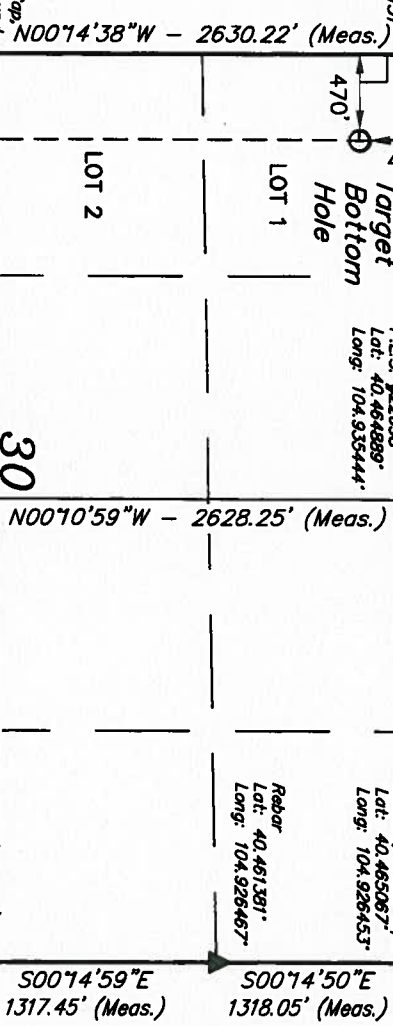
BASIS OF ELEVATION
USGS COOPERATIVE BASE NETWORK CONTROL STATION,
DESIGNATION 'VERMILYEA'. NGS DATA SHEET LISTS THE
NAVD 88 ELEVATION AS BEING 5026 FEET

1995 Alum. Cap.
0.3' Below Ground,
P.L.S. #22098
Lot: 40.464889
Long: 104.935444
Target
Bottom
Hole
470'

MC 1987 Alum.
Cap 0.3' Above
Ground, Alum. Pipe
Lot: 40.463087
Long: 104.926453
Rebar
Lot: 40.461381
Long: 104.926467

True Position
Lot: 40.464997
Long: 104.926453

BASIS OF BEARINGS
BASIS OF BEARINGS IS A G.P.S. OBSERVATION.



2001 Alum. Cap.
0.2' Below Ground,
Found in Monument
Box, P.L.S. #31169
Lot: 40.457586
Long: 104.944156
N00°14'38"W - 2630.22' (Meas.)

1995 Alum. Cap.
0.1' High,
L.S. #22098
Lot: 40.457675
Long: 104.935481

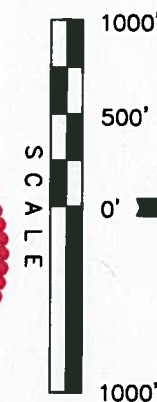
1998 Alum. Cap.
P.L.S. #22098
Lot: 40.457676
Long: 104.926478

N00°14'36"W
4323.31'

1995 Alum. Cap.
0.1' High,
L.S. #22098
Lot: 40.457675
Long: 104.935481

1998 Alum. Cap.
P.L.S. #22098
Lot: 40.457676
Long: 104.926478

LINE	DIRECTION	LENGTH
L1	N88°32'07"W	1822.85'



THIS IS TO CERTIFY THAT THE ABOVE LOCATION WAS PREPARED FROM
FIELD NOTES OF ACTUAL SURVEYS MADE BY ME OR UNDER MY
SUPERVISION AND THAT THE SAME ARE TRUE AND CORRECT TO THE
BEST OF MY KNOWLEDGE AND BELIEF.

REVISED: 10-21-13 H.K.W.
REVISED: 04-02-13 J.W.

REGISTERED LAND SURVEYOR
REGISTRATION NO. 98-31-13
STATE OF COLORADO

2001 Alum. Cap.
0.2' Below Ground,
Found in Monument
Box, P.L.S. #31169
Lot: 40.450547
Long: 104.944181
S88°04'09"W - 2413.06' (Meas.)

1995 Alum. Cap.
1.0' Below Ground,
L.S. #22098
Lot: 40.450547
Long: 104.935517

2001 Private Alum.
Cap. 0.2' Below
Ground, Found in
Monument Box
Lot: 40.450731
Long: 104.926503

UNTAH ENGINEERING & LAND SURVEYING
86 SOUTH 200 EAST - VERNAL, UTAH 84078
(435) 789-1017

PDOP = 1.5

SCALE 1" = 1000'

PARTY D.N. K.H. H.K.W.

WEATHER COLD

DATE SURVEYED: 03-22-13

DATE DRAWN: 03-27-13

REFERENCES G.L.O. PLAT

FILE GREAT WESTERN OIL & GAS COMPANY