

GREAT WESTERN OIL & GAS COMPANY

LOCATION DRAWING DETAIL FOR

SCHMUNK 31 OFF-SITE TANK PAD
SECTION 31, T7N, R65W, 6th. P.M.
1665' FNL 1357' FEL

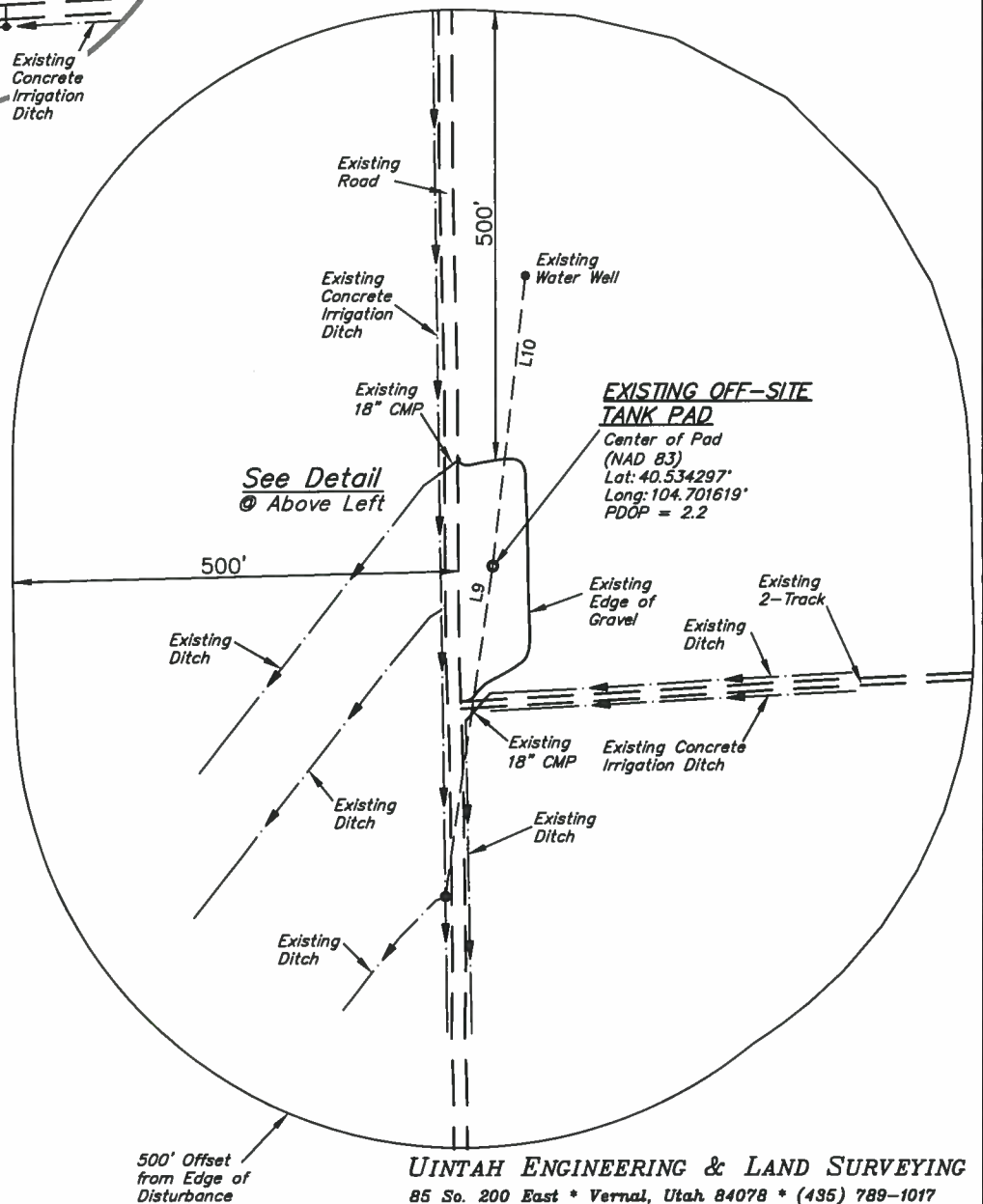
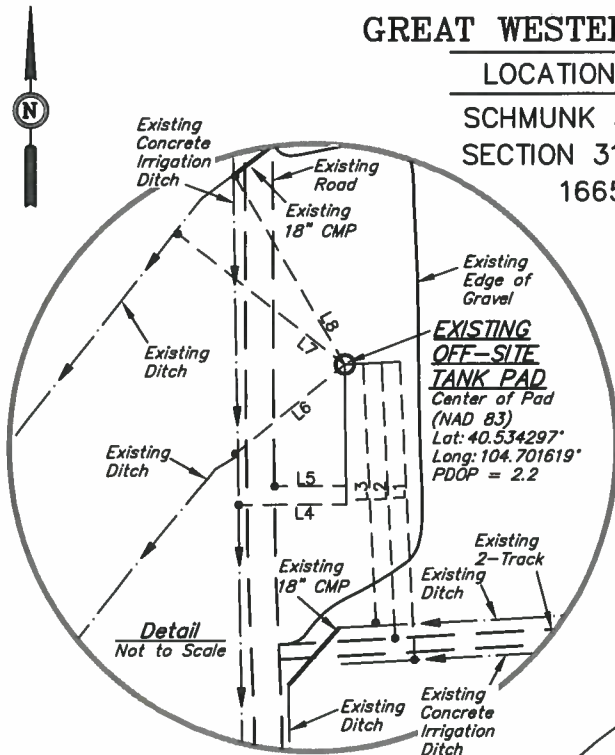
FIGURE #3A

SCALE: 1" = 200'

DATE: 01-17-13

DRAWN BY: H.K.W.

REV: 12-30-13



LINE TABLE

LINE	DIRECTION	LENGTH
L1	S03°E	161'
L2	S03°E	149'
L3	S03°E	140'
L4	WEST	58'
L5	WEST	39'
L6	S51°W	76'
L7	N52°W	115'
L8	N30°W	118'
L9	S08°W	374'
L10	N07°E	328'

UINTAH ENGINEERING & LAND SURVEYING

85 So. 200 East * Vernal, Utah 84078 * (435) 789-1017