



Digital Drilling Data
Systems, LLC

MD Lateral STK-1

(Scale: 5":100' (10"))

Company: EnCana Oil and Gas (USA)

State: CO

Well: 1B-2H STK-1

County: Weld

Field: DJ Basin

Country: USA

Well ID: 051233611000

Job Number: 135023

Location: Weld County

Operator 1: John Corby

Operator 2: Kenneth Wagonor

Elev KB: 5091

Elev DF: 5091

Elev GL: 5078

Comment 1:

Comment 2:

Comment 3:

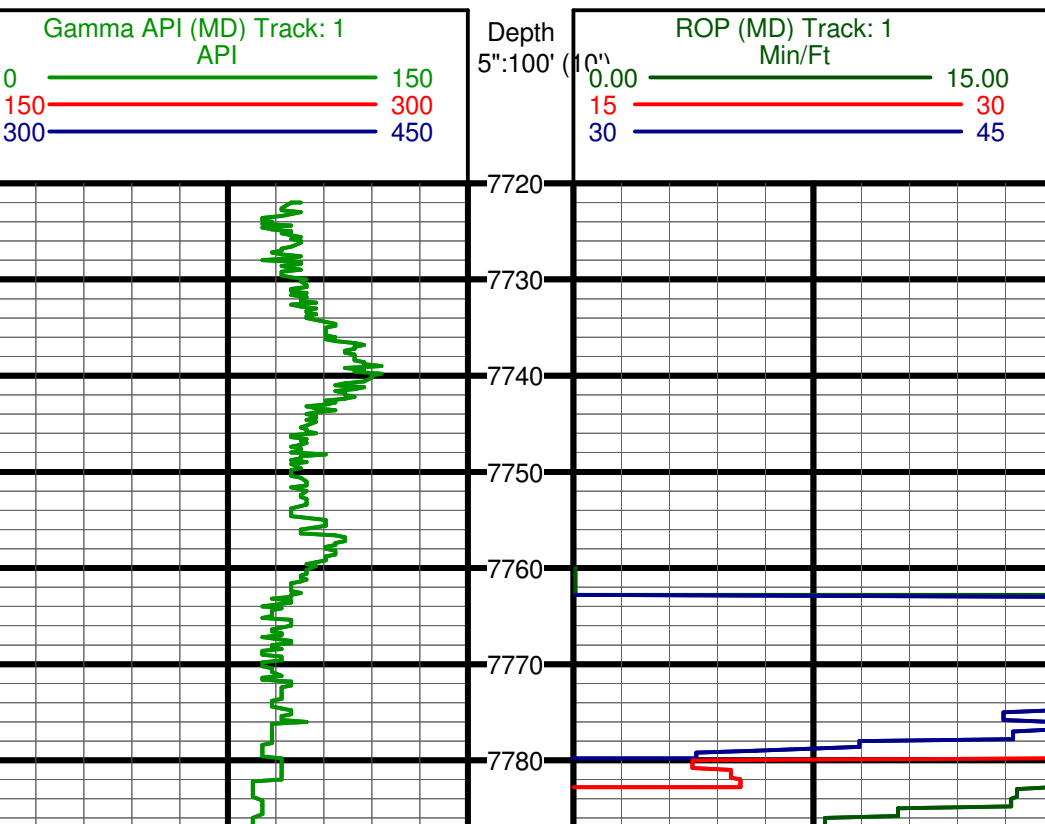
Comment 4:

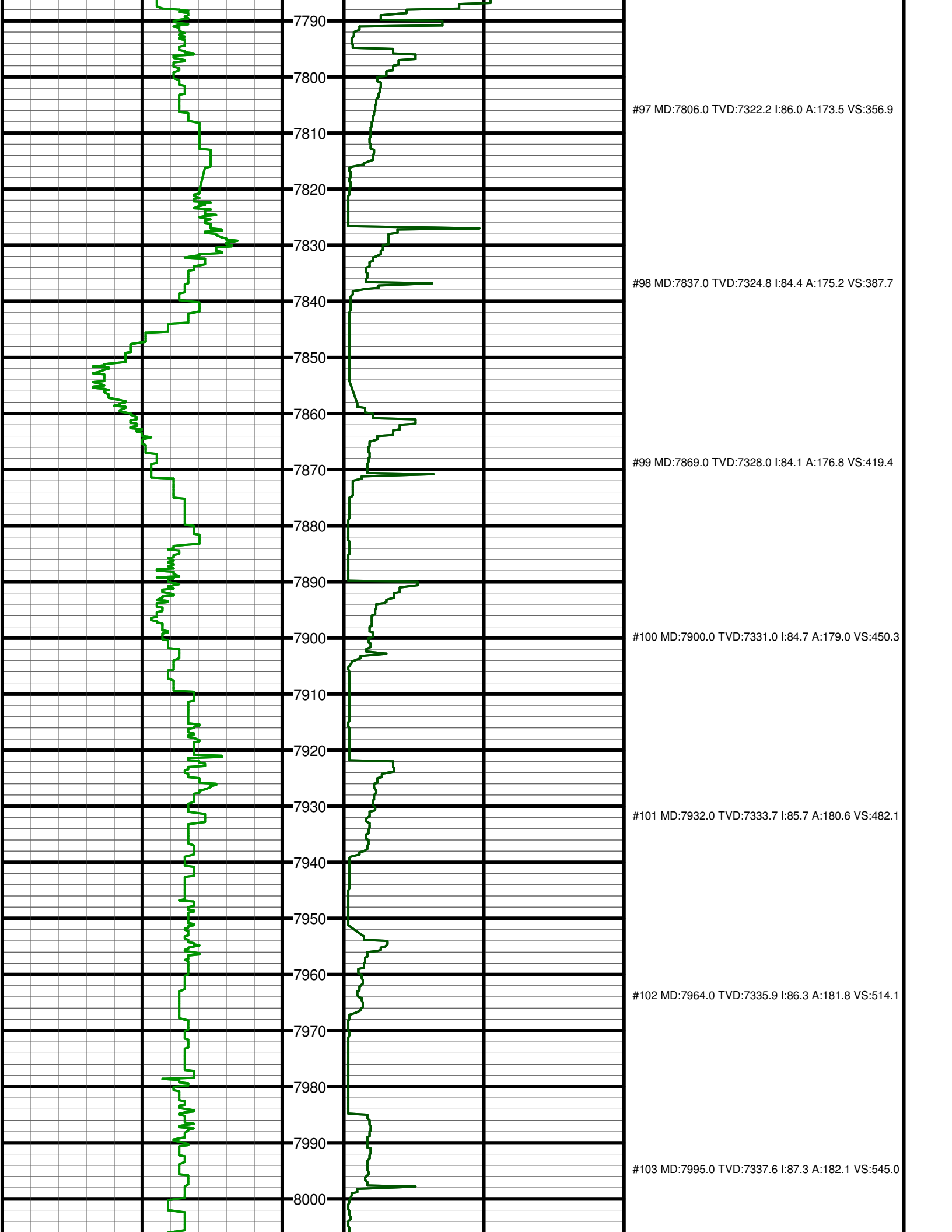
Comment 5:

Hole Data			Casing Record		
Size	From	To	Size	From	To
8.75	1046	7545	9.625	0	1050
			7	1050	7545

Tool Run Data		Run #1	Run #2	Run #3	Run #4	Run #5
Tool S/N	1548/200	1366				
Cal Factor	2.869	2.869				
Gamma Offset	37.98	35.69				
Start Depth	7760	11286				
Start Date	1/6/2013	1/10/13				
Start Time	2:30	01:00				
End Depth	11286	11848				
End Date	1/10/13	1/11/13				
End Time	00:00	4:00				

#95 MD:7733.0 TVD:7319.9 I:89.0 A:172.8 VS:284.5
#96 MD:7774.0 TVD:7320.7 I:88.8 A:173.2 VS:325.2





7790

7800

#97 MD:7806.0 TVD:7322.2 I:86.0 A:173.5 VS:356.9

7810

7820

7830

#98 MD:7837.0 TVD:7324.8 I:84.4 A:175.2 VS:387.7

7840

7850

7860

#99 MD:7869.0 TVD:7328.0 I:84.1 A:176.8 VS:419.4

7870

7880

7890

#100 MD:7900.0 TVD:7331.0 I:84.7 A:179.0 VS:450.3

7900

7910

7920

7930

#101 MD:7932.0 TVD:7333.7 I:85.7 A:180.6 VS:482.1

7940

7950

7960

#102 MD:7964.0 TVD:7335.9 I:86.3 A:181.8 VS:514.1

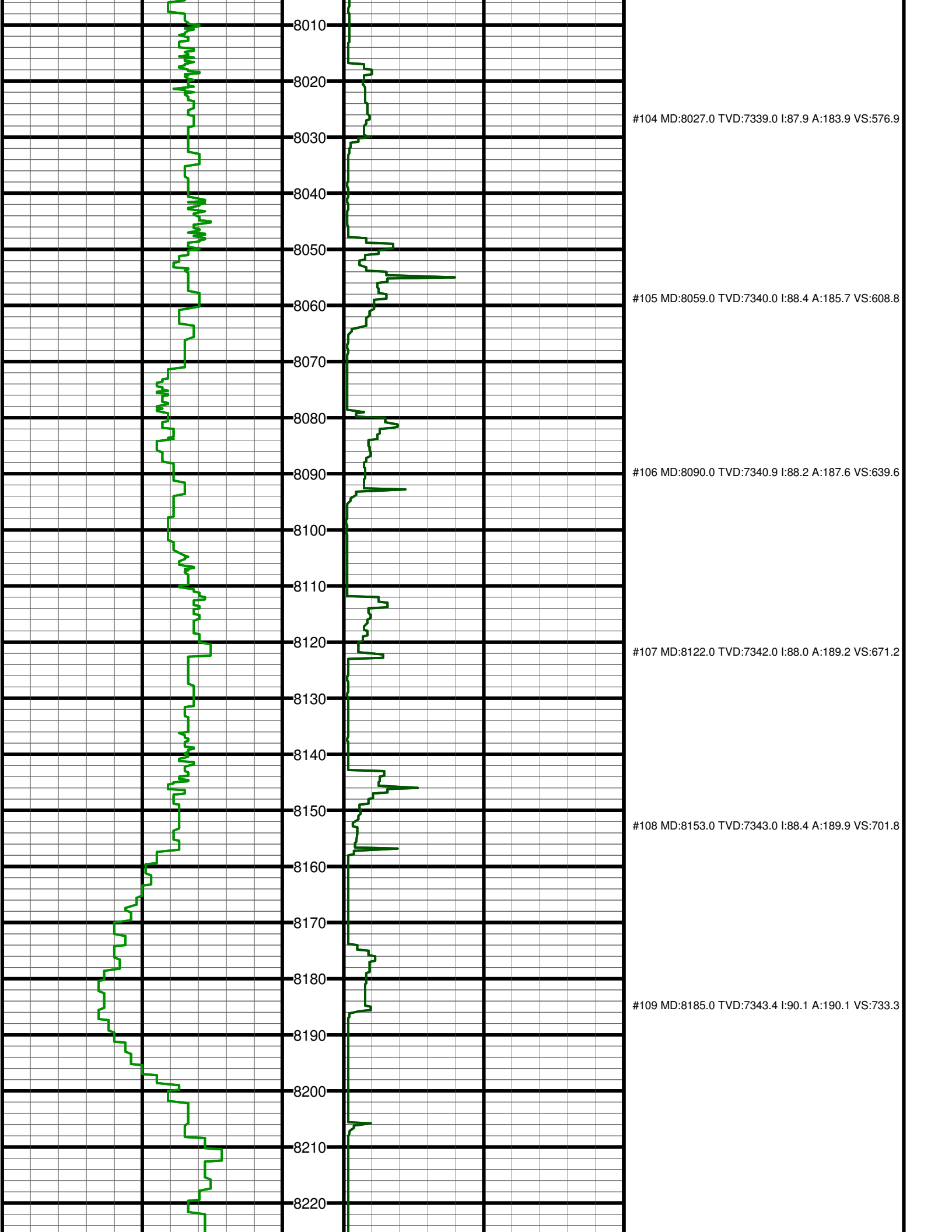
7970

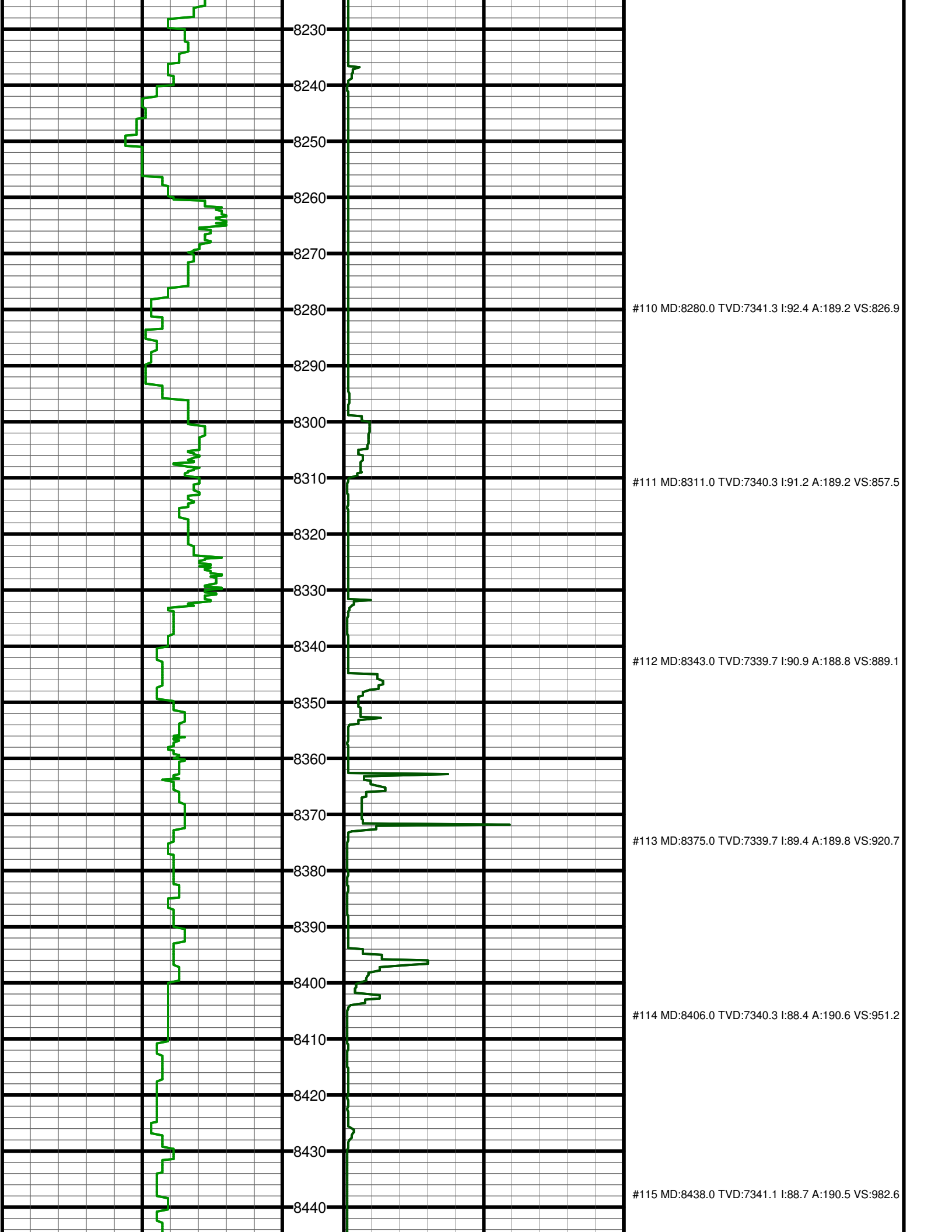
7980

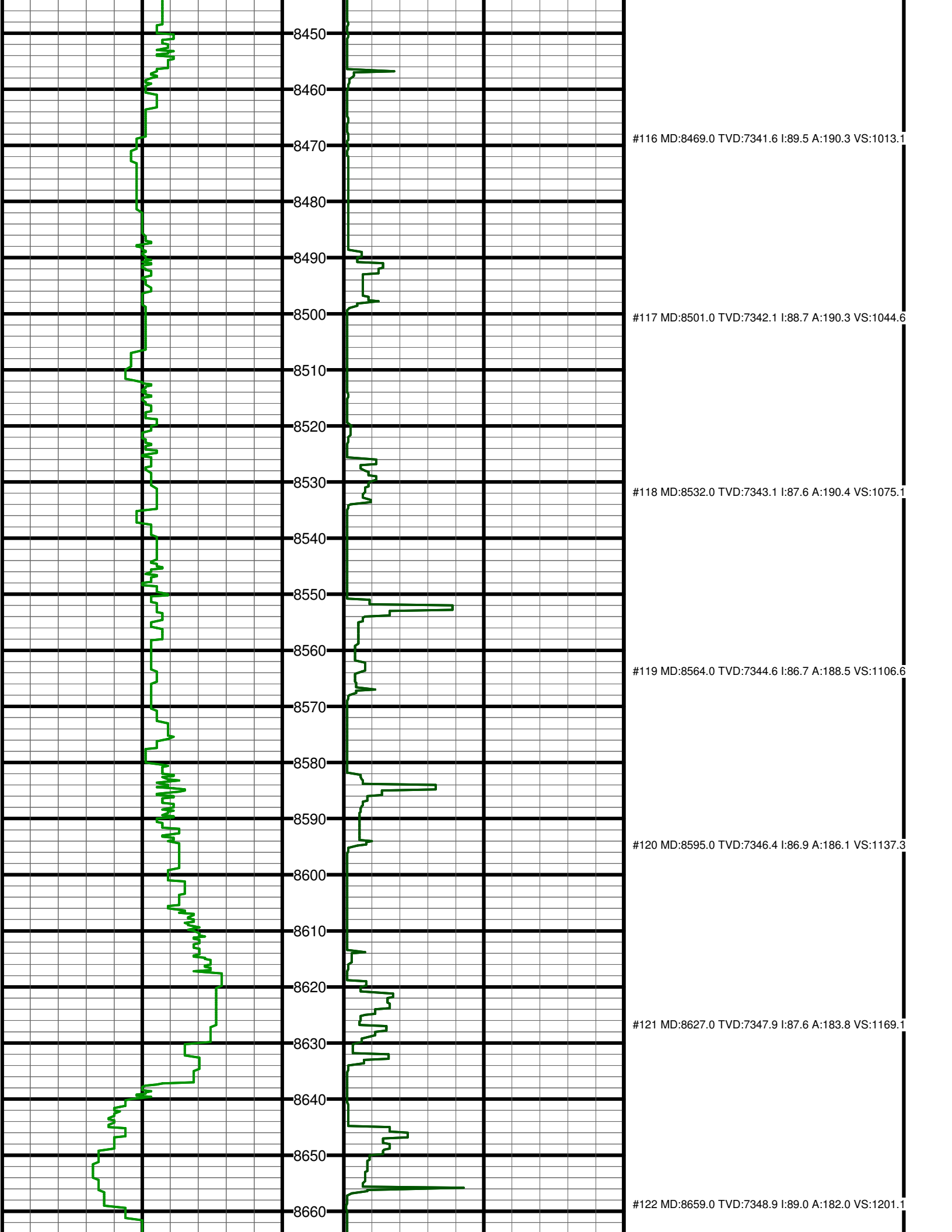
7990

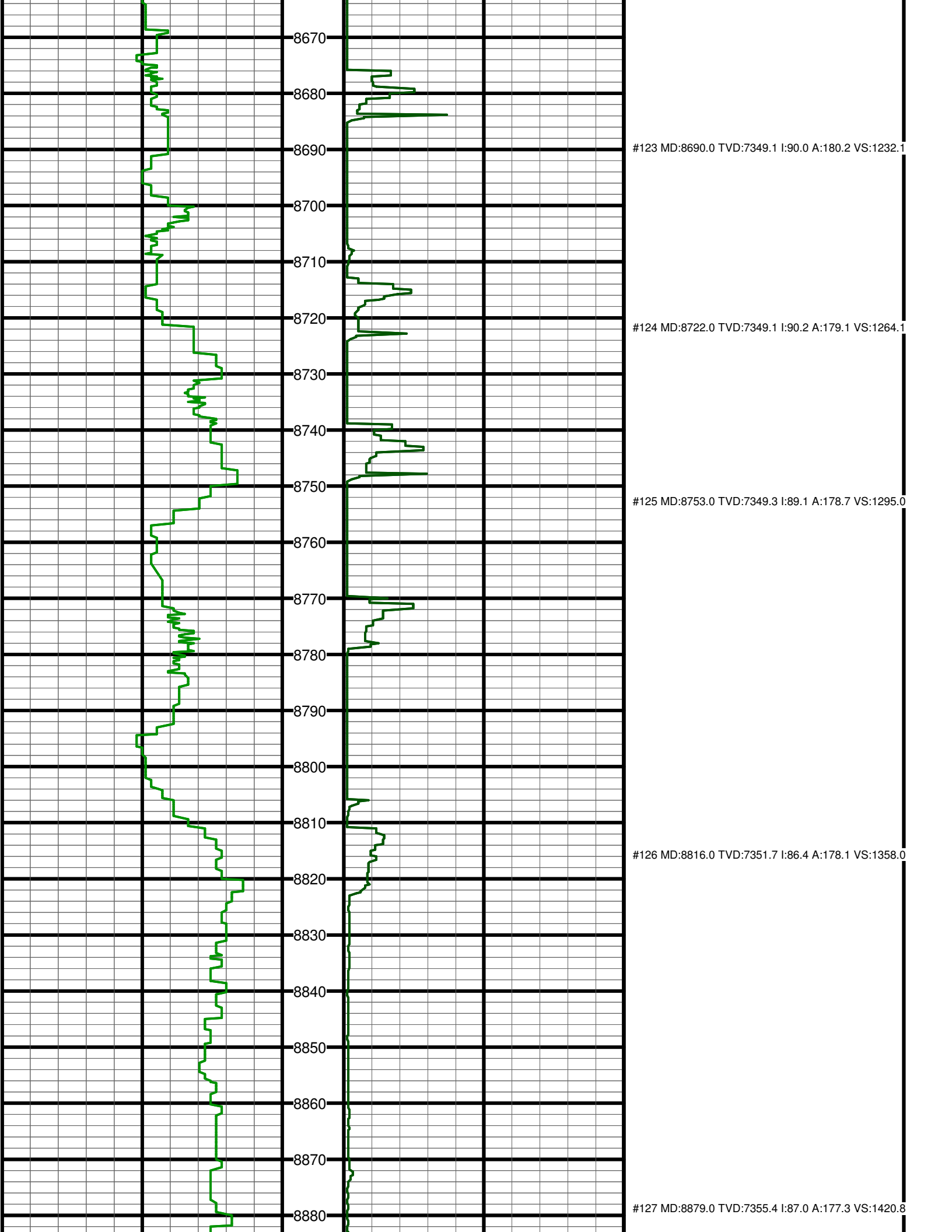
#103 MD:7995.0 TVD:7337.6 I:87.3 A:182.1 VS:545.0

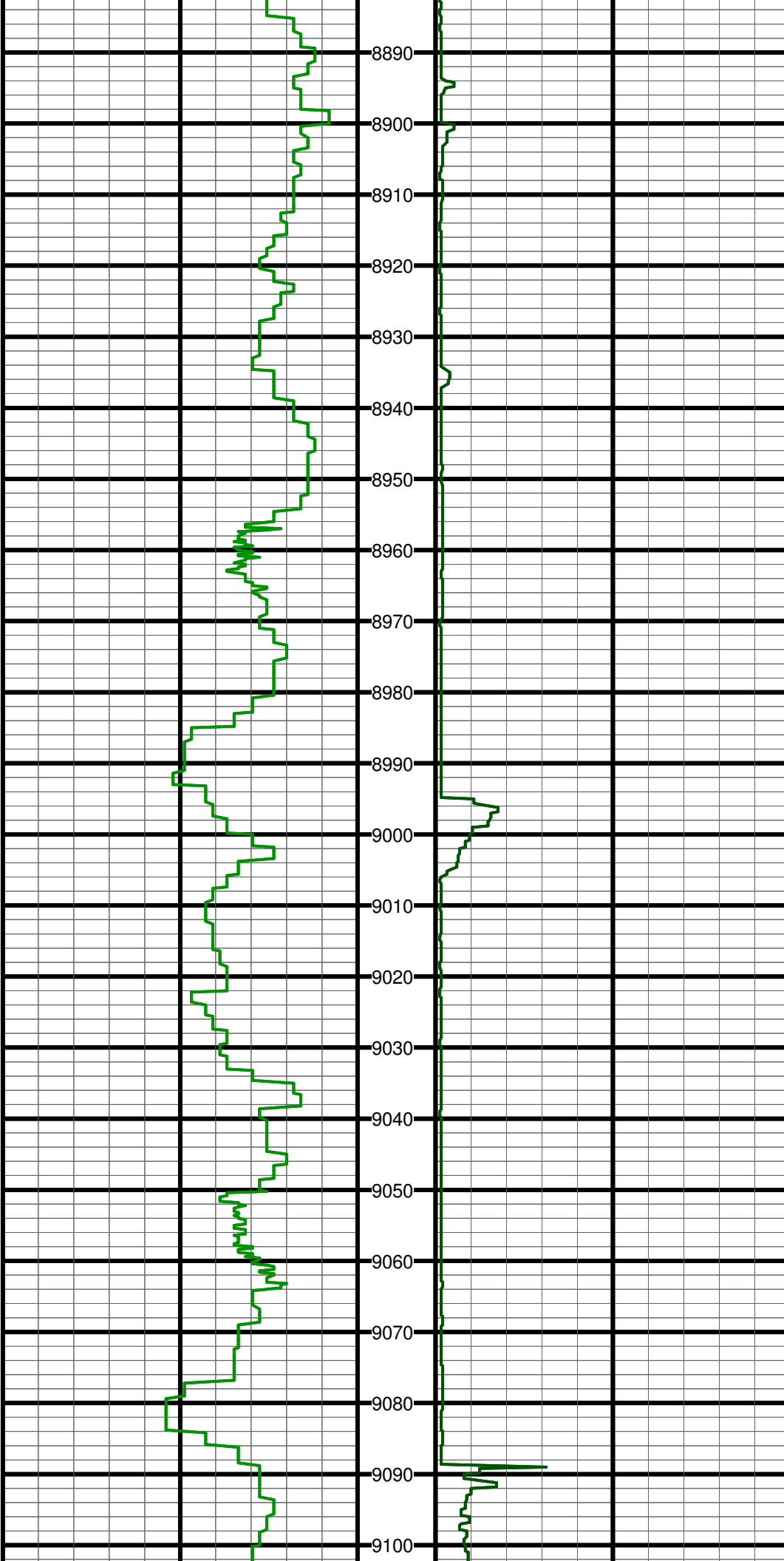
8000







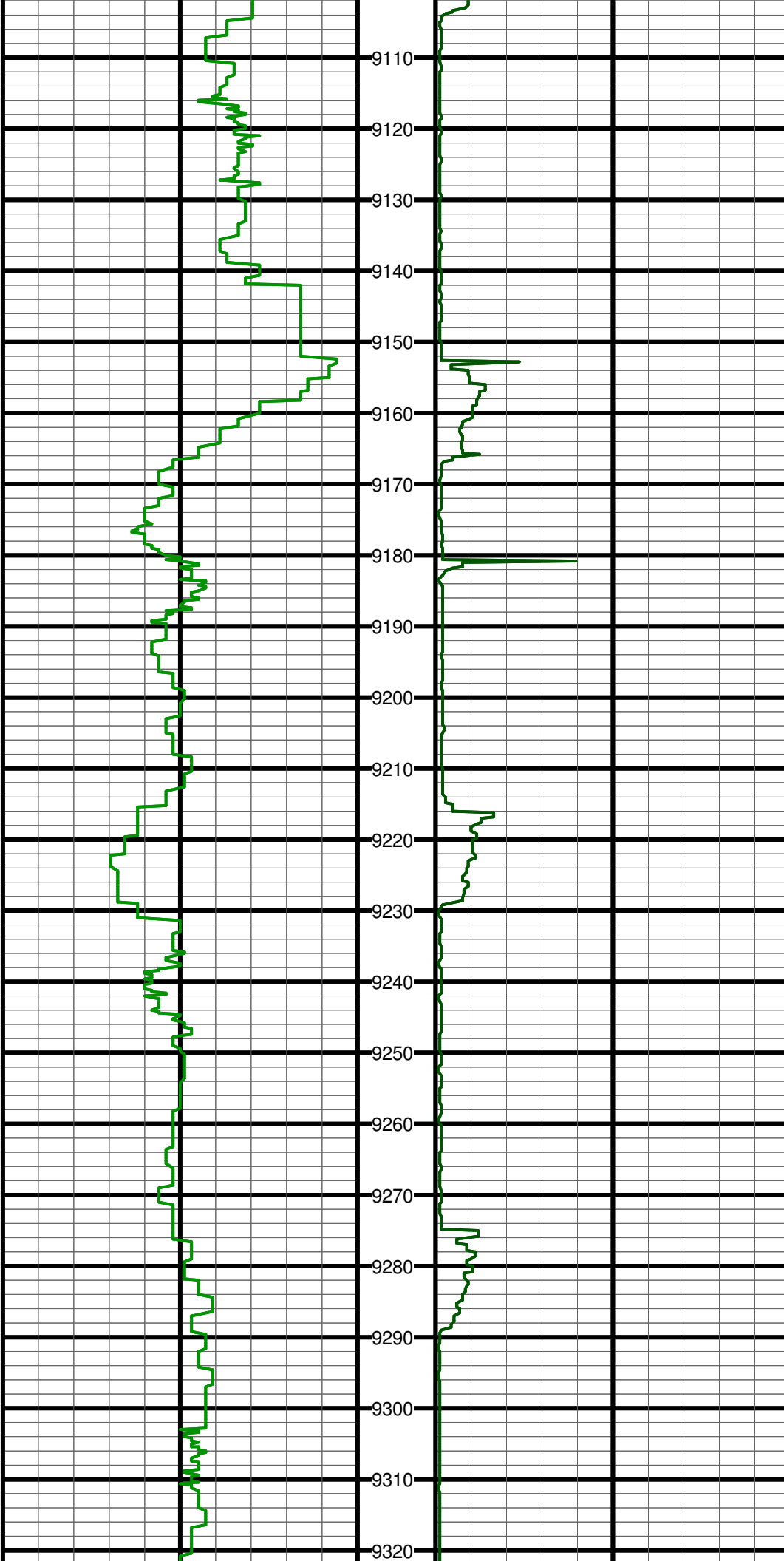




#128 MD:8942.0 TVD:7358.3 I:87.7 A:177.1 VS:1483.7

#129 MD:9037.0 TVD:7360.4 I:89.7 A:177.5 VS:1578.5

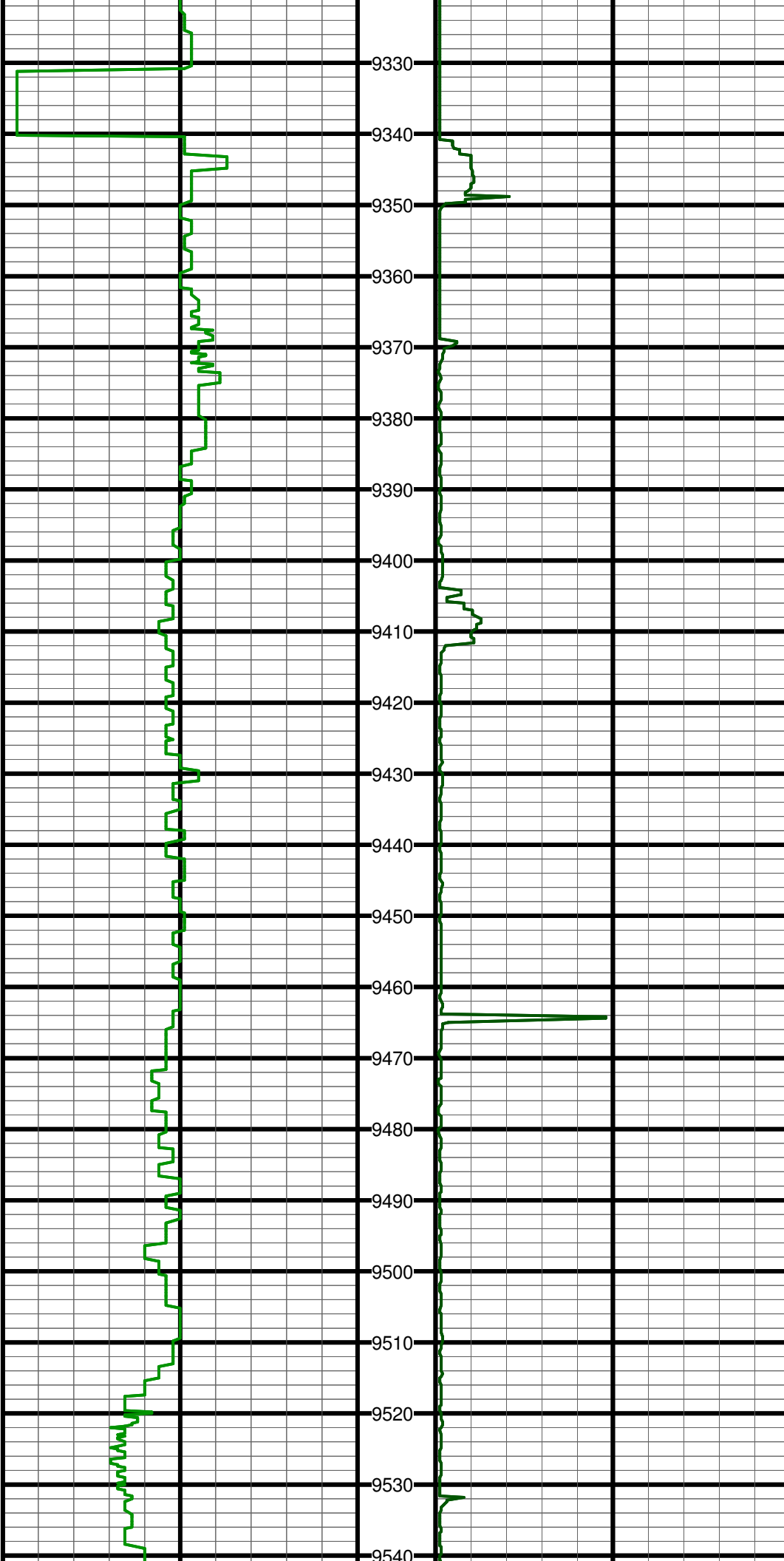
#130 MD:9100.0 TVD:7360.8 I:89.7 A:176.9 VS:1641.5



#131 MD:9163.0 TVD:7362.0 I:88.1 A:175.9 VS:1704.3

#132 MD:9226.0 TVD:7364.5 I:87.3 A:177.4 VS:1767.2

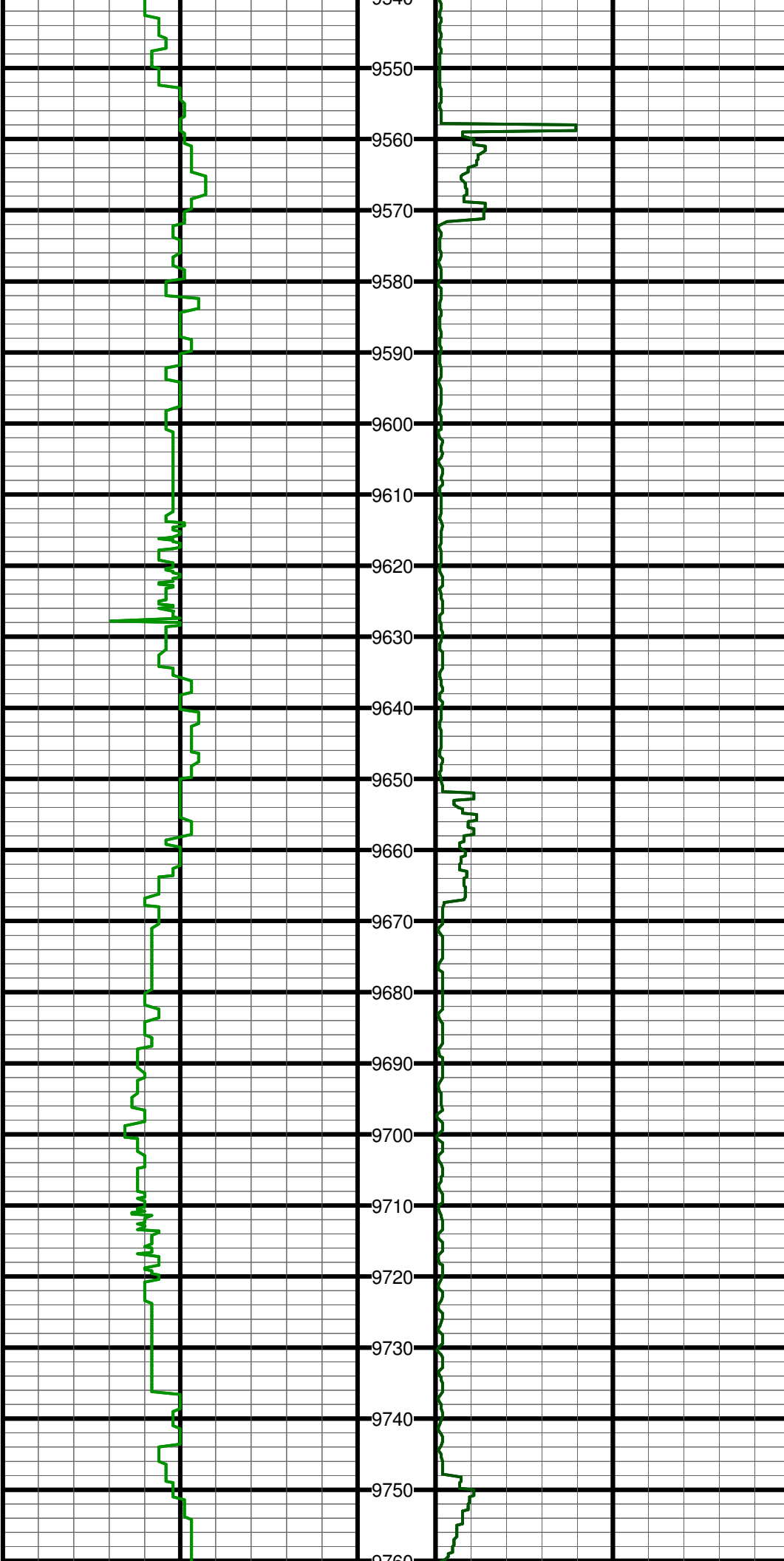
#133 MD:9290.0 TVD:7367.1 I:88.0 A:179.0 VS:1831.1



#134 MD:9353.0 TVD:7369.2 I:88.3 A:179.4 VS:1894.0

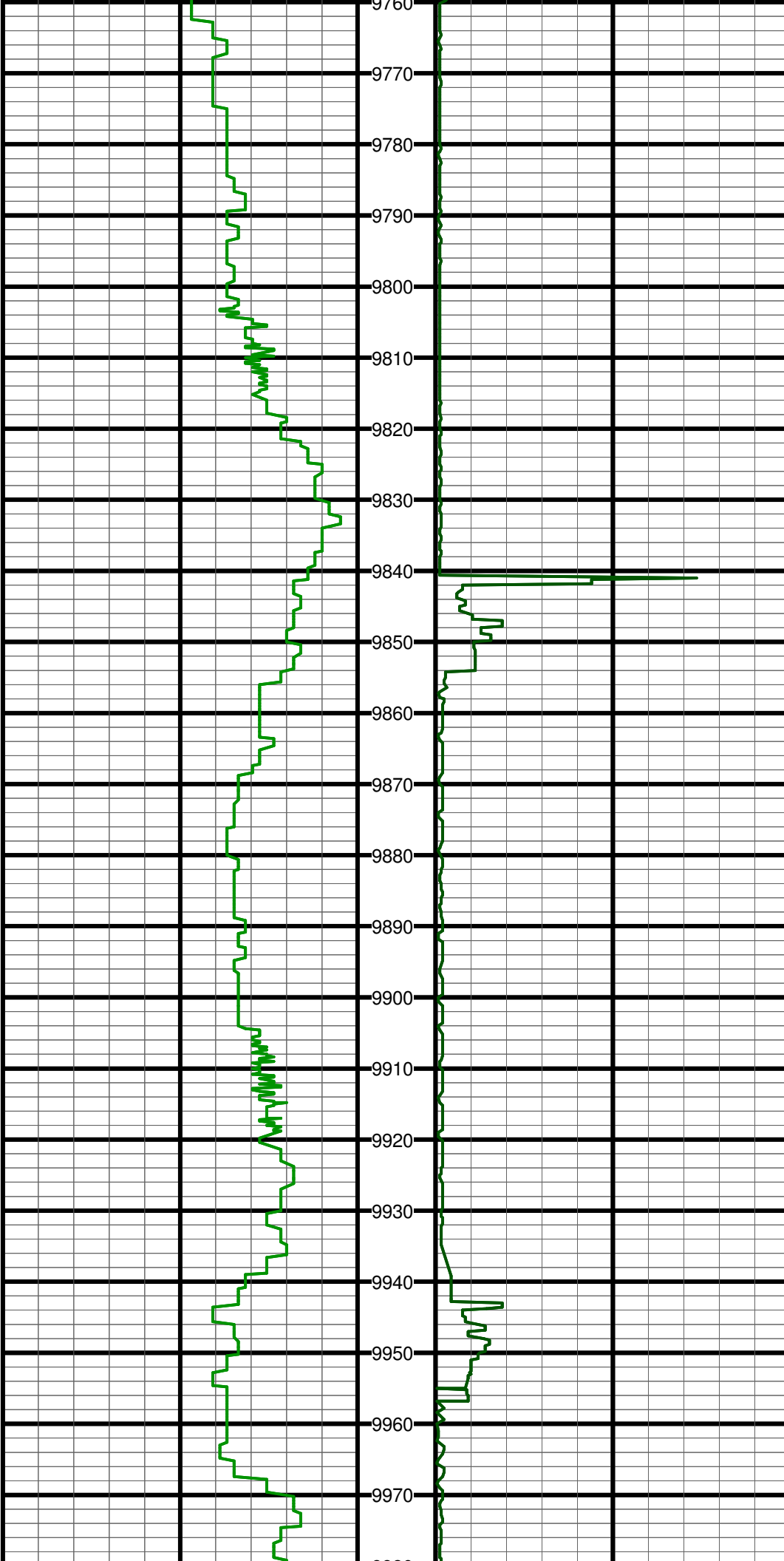
#135 MD:9416.0 TVD:7370.8 I:88.8 A:179.8 VS:1957.0

#136 MD:9511.0 TVD:7371.3 I:90.6 A:180.0 VS:2052.0



#137 MD:9605.0 TVD:7370.3 I:90.5 A:179.8 VS:2146.0

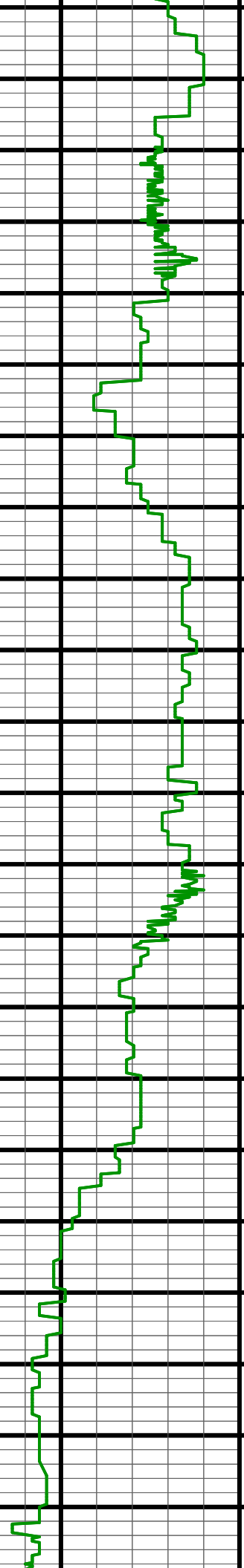
#138 MD:9700.0 TVD:7369.9 I:90.1 A:179.0 VS:2241.0



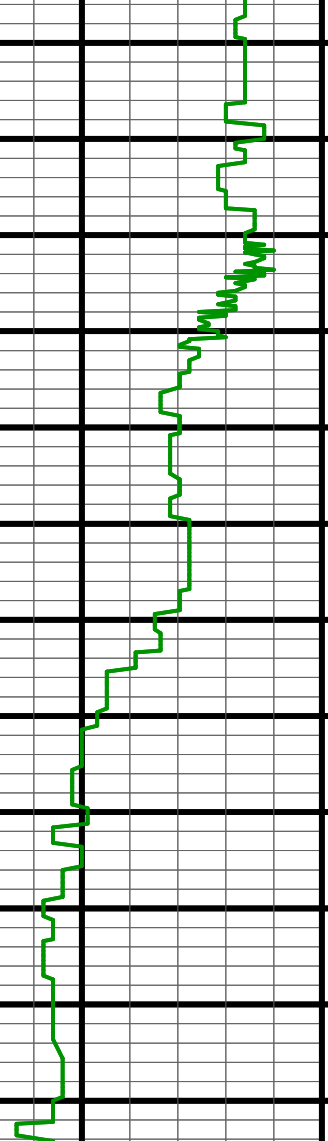
#139 MD:9795.0 TVD:7369.8 I:90.0 A:179.4 VS:2336.0

#140 MD:9890.0 TVD:7368.8 I:91.2 A:180.2 VS:2431.0

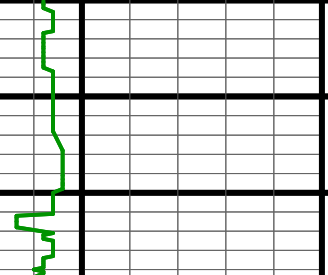
#141 MD:9984.0 TVD:7366.6 I:91.4 A:178.9 VS:2524.9

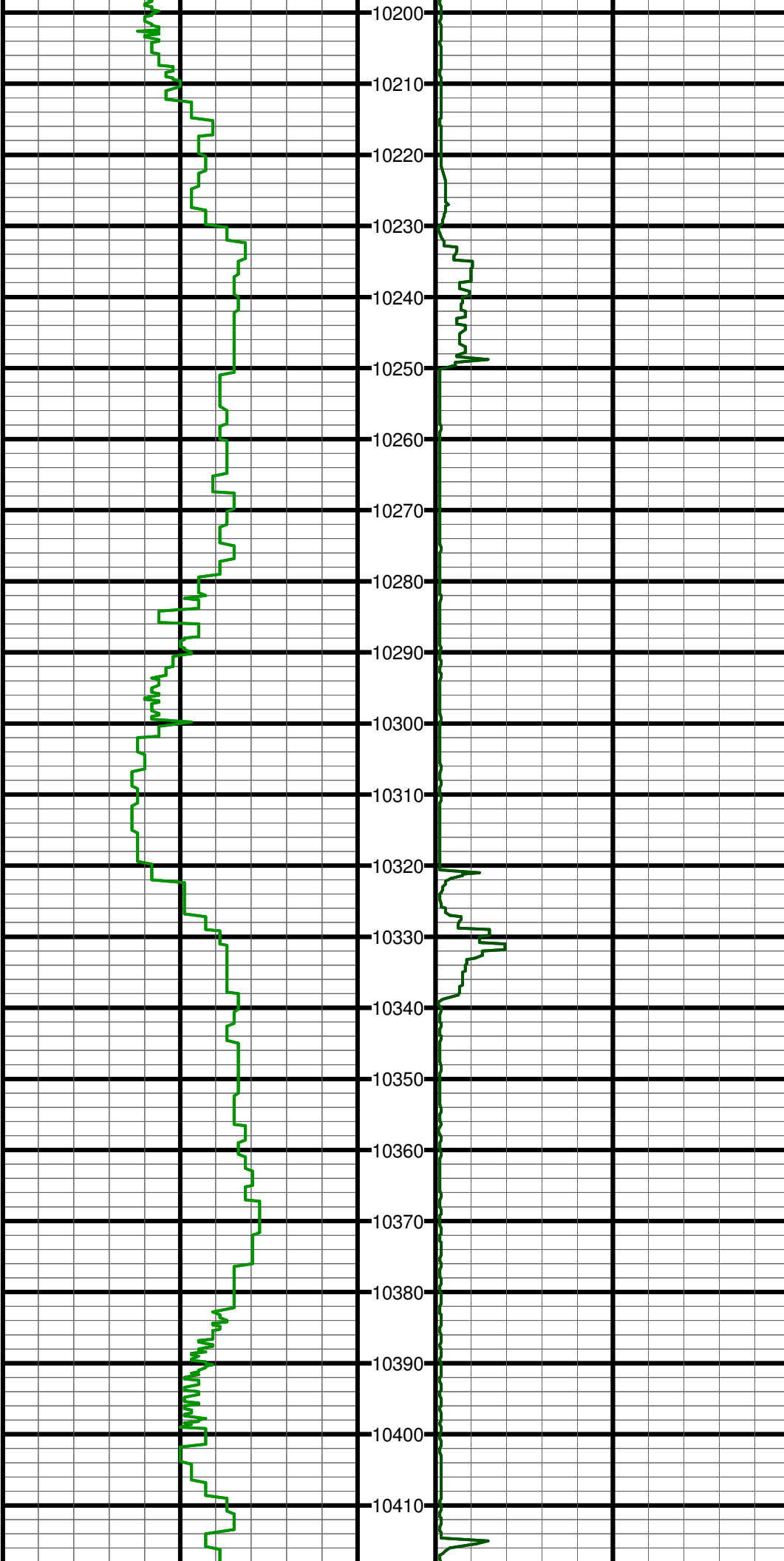


#142 MD:10079.0 TVD:7365.4 I:90.1 A:178.7 VS:2619.9



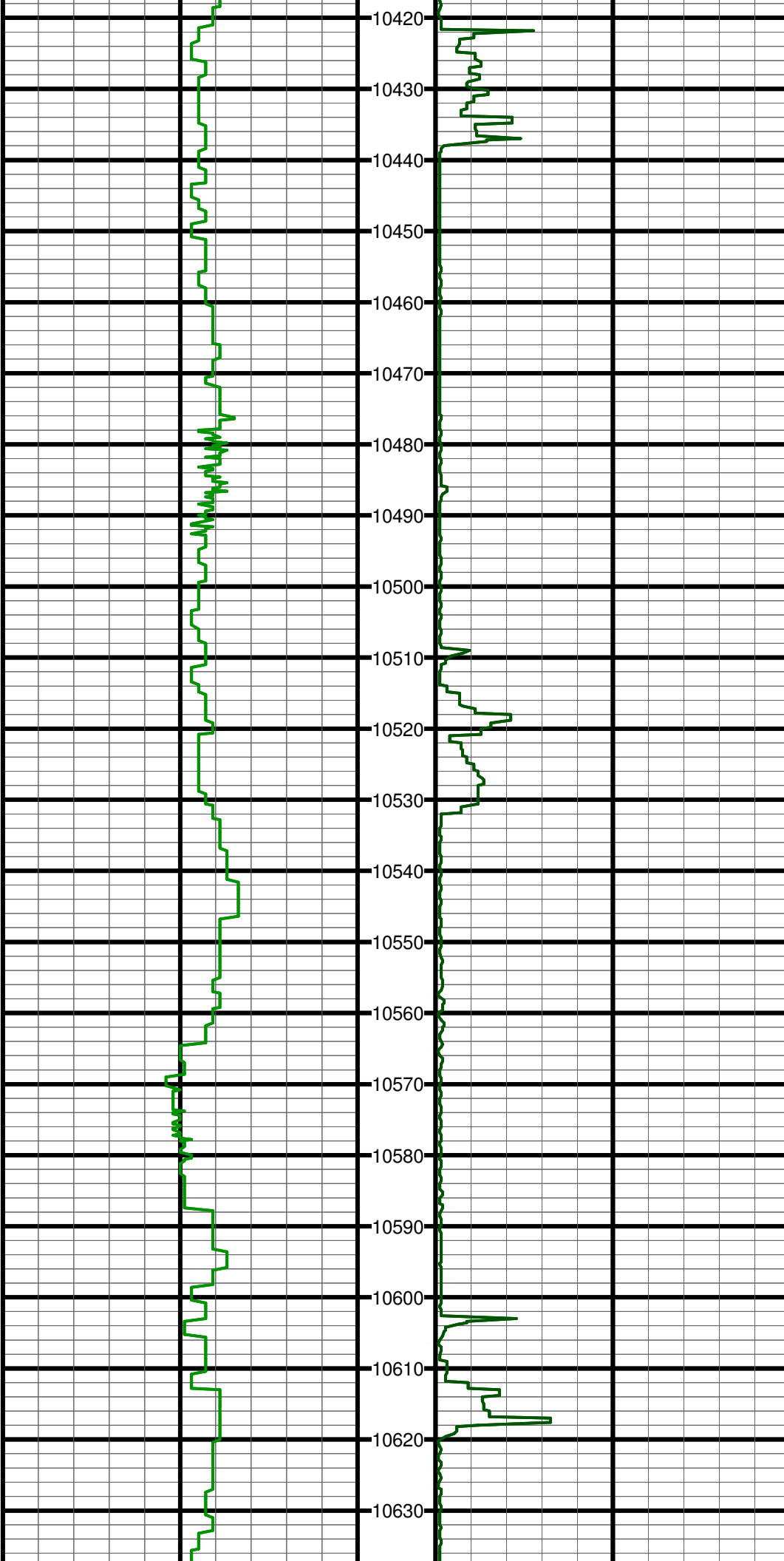
#143 MD:10174.0 TVD:7364.7 I:90.8 A:179.3 VS:2714.9





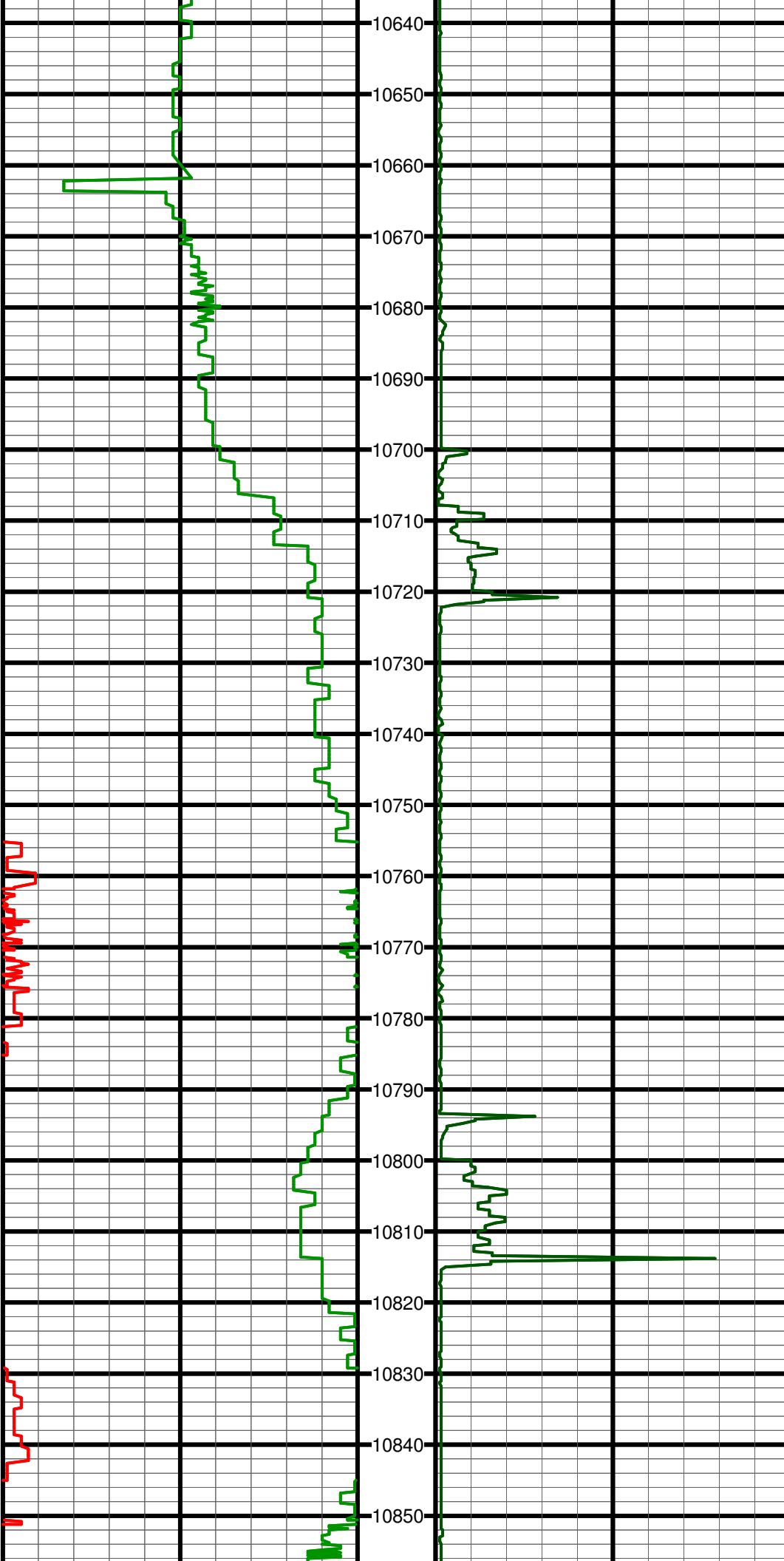
#144 MD:10268.0 TVD:7363.8 I:90.2 A:180.1 VS:2808.9

#145 MD:10363.0 TVD:7363.7 I:89.9 A:179.0 VS:2903.9



#146 MD:10458.0 TVD:7364.6 I:89.1 A:179.0 VS:2998.9

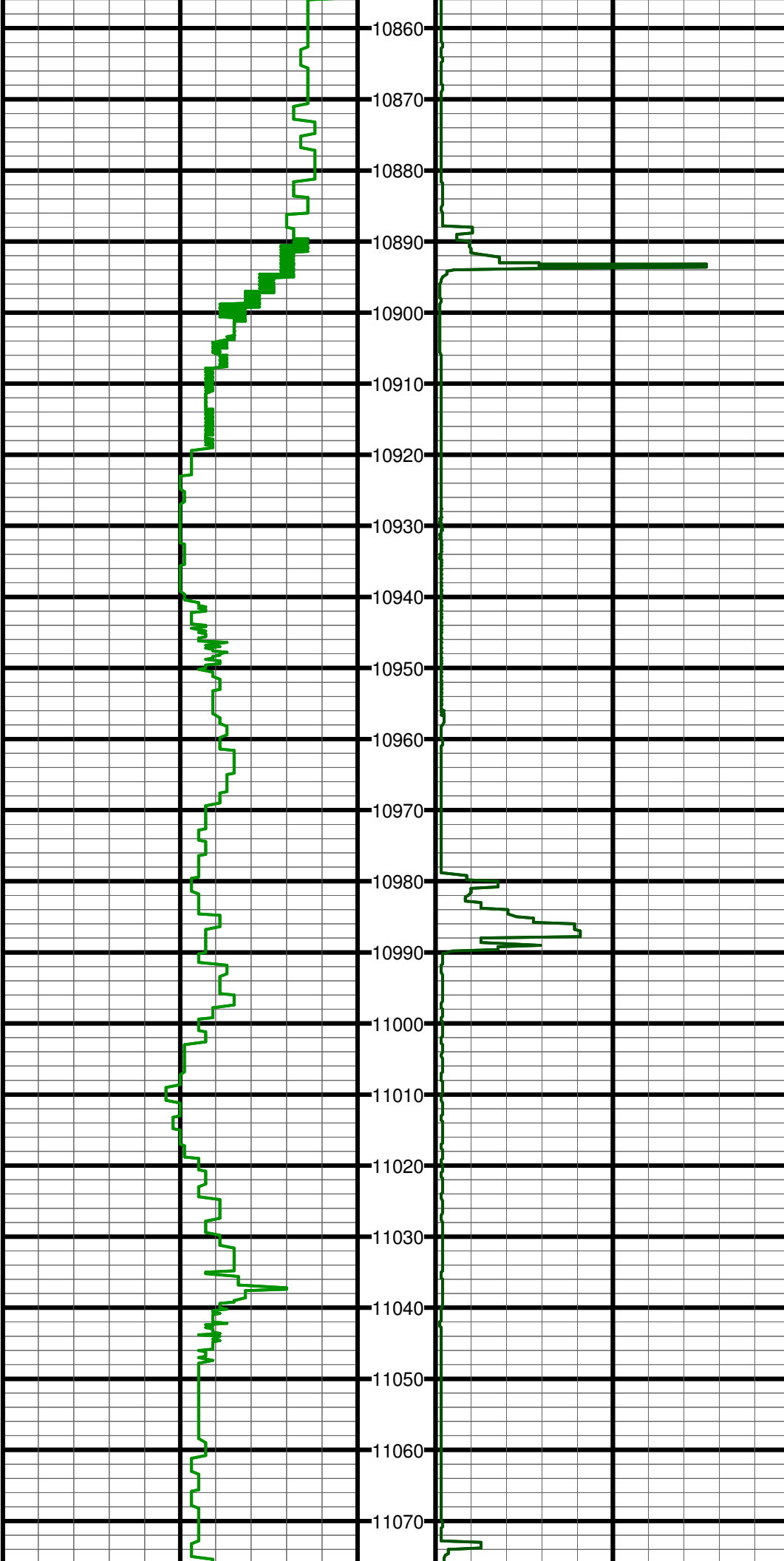
#147 MD:10552.0 TVD:7365.2 I:90.2 A:181.2 VS:3092.9



#148 MD:10647.0 TVD:7364.7 I:90.3 A:181.8 VS:3187.8

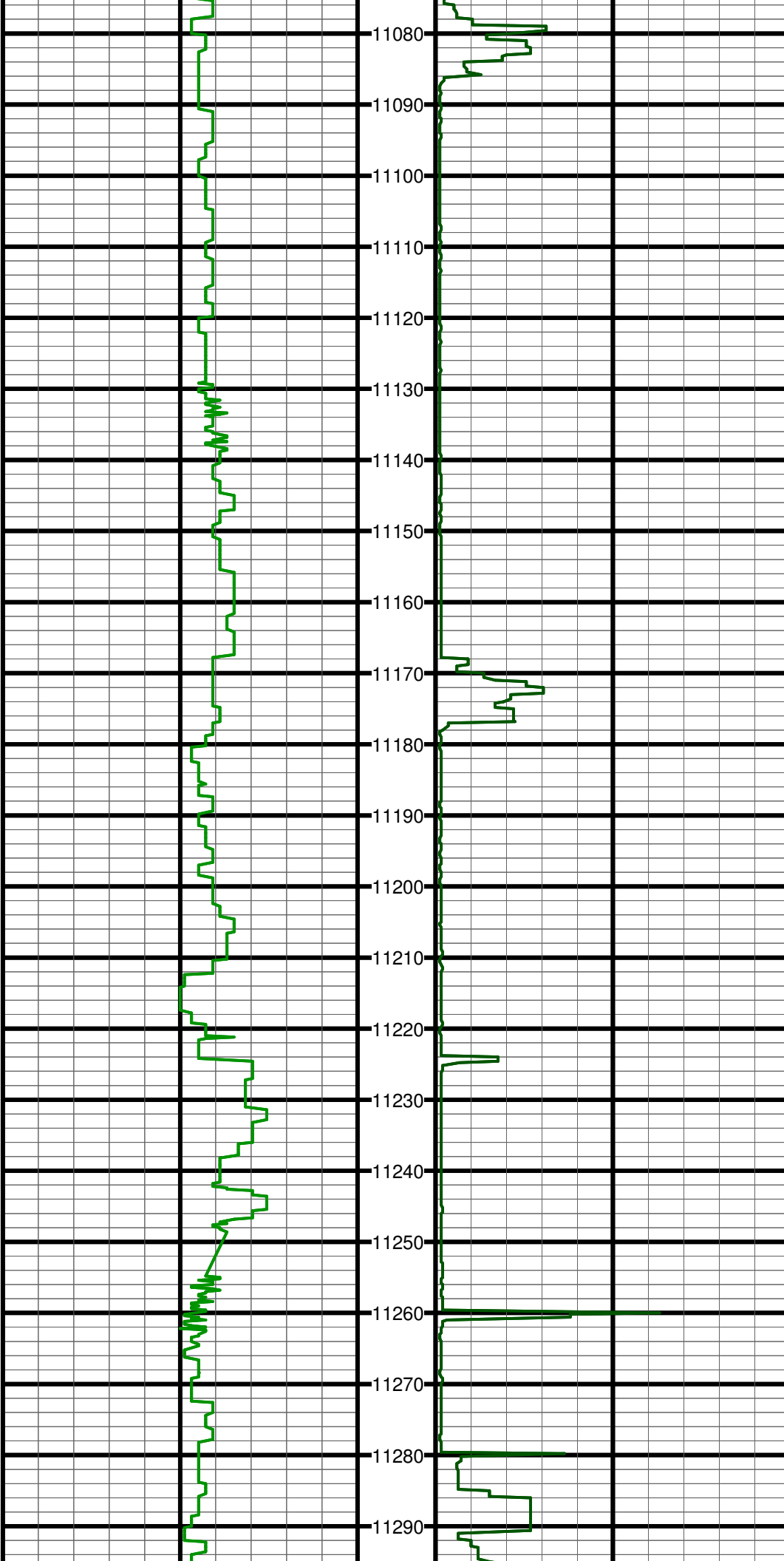
#149 MD:10742.0 TVD:7364.0 I:90.6 A:181.0 VS:3282.8

#150 MD:10837.0 TVD:7364.4 I:88.9 A:179.2 VS:3377.8



#151 MD:10931.0 TVD:7366.6 I:88.4 A:179.8 VS:3471.7

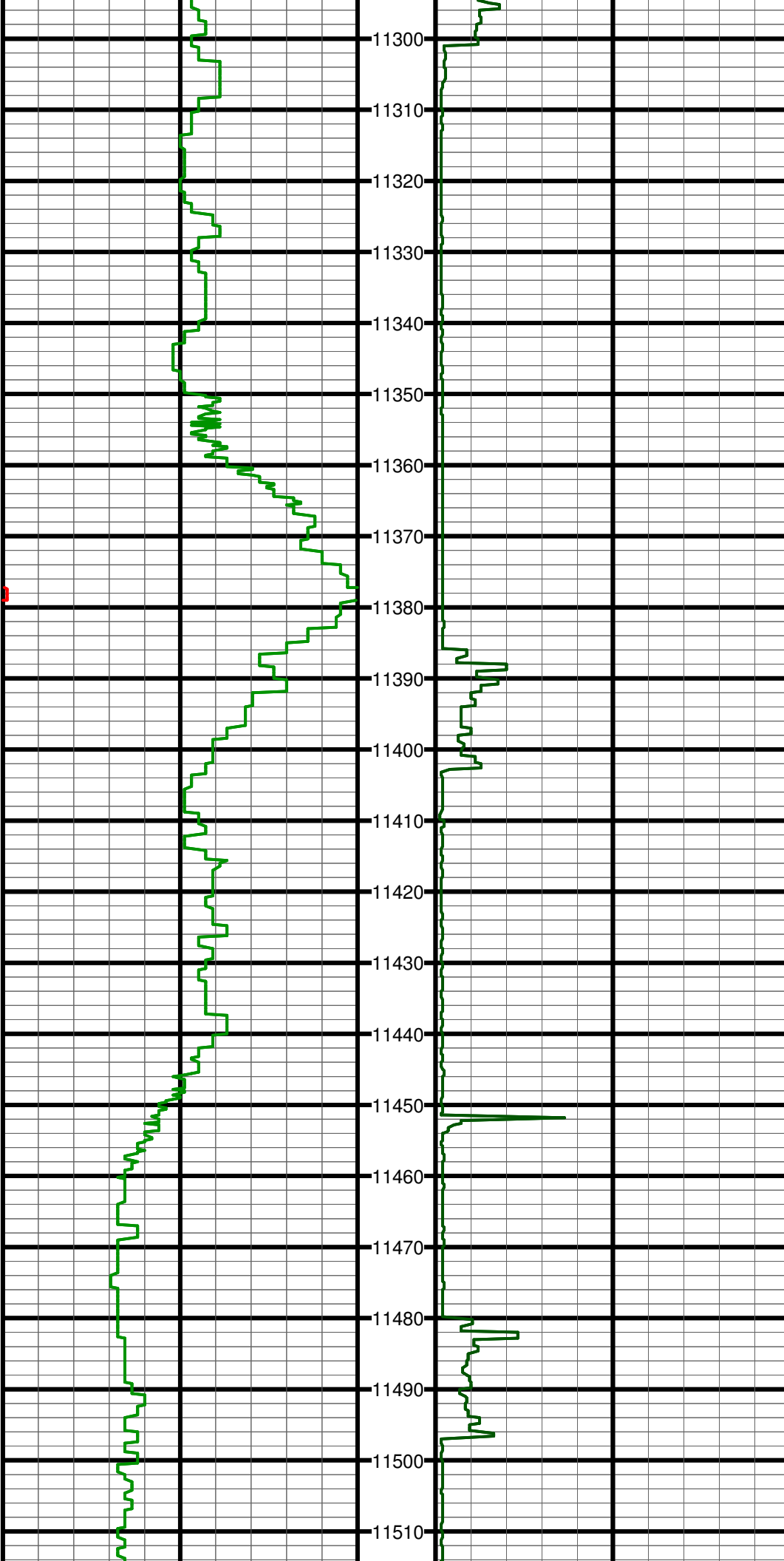
#152 MD:11026.0 TVD:7369.0 I:88.7 A:179.8 VS:3566.7



#153 MD:11121.0 TVD:7370.1 I:90.0 A:181.3 VS:3661.7

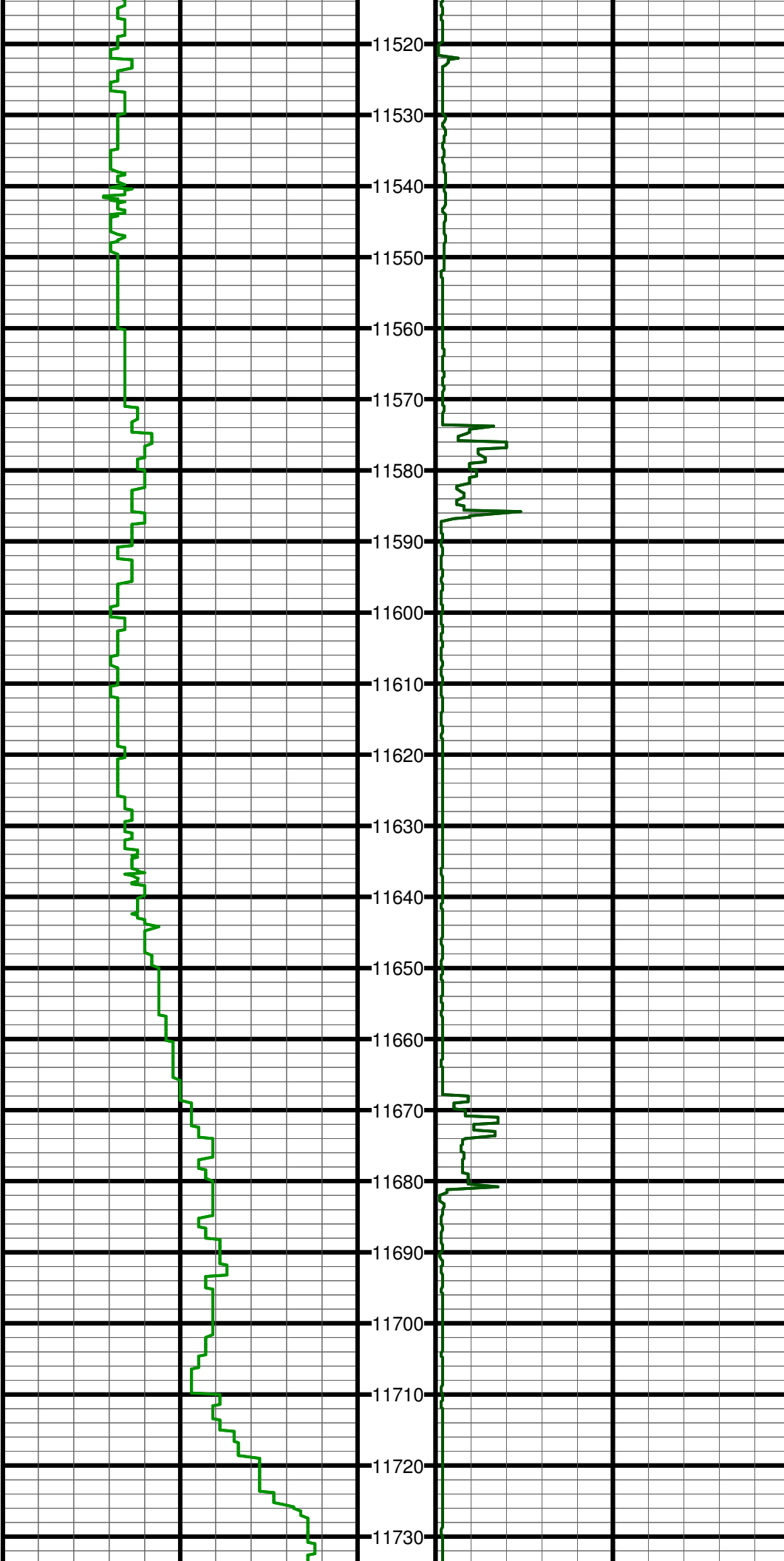
#154 MD:11216.0 TVD:7369.0 I:91.3 A:182.7 VS:3756.6

#155 MD:11241.0 TVD:7368.4 I:91.6 A:181.7 VS:3781.6



#156 MD:11336.0 TVD:7365.6 I:91.8 A:181.9 VS:3876.5

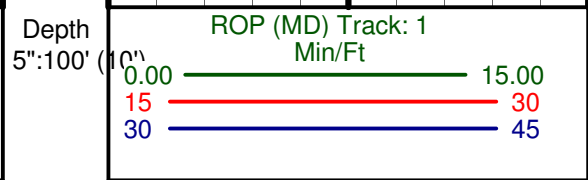
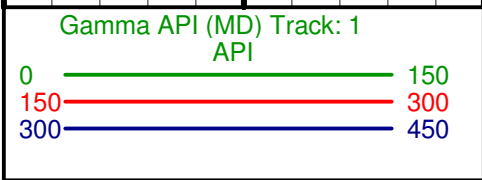
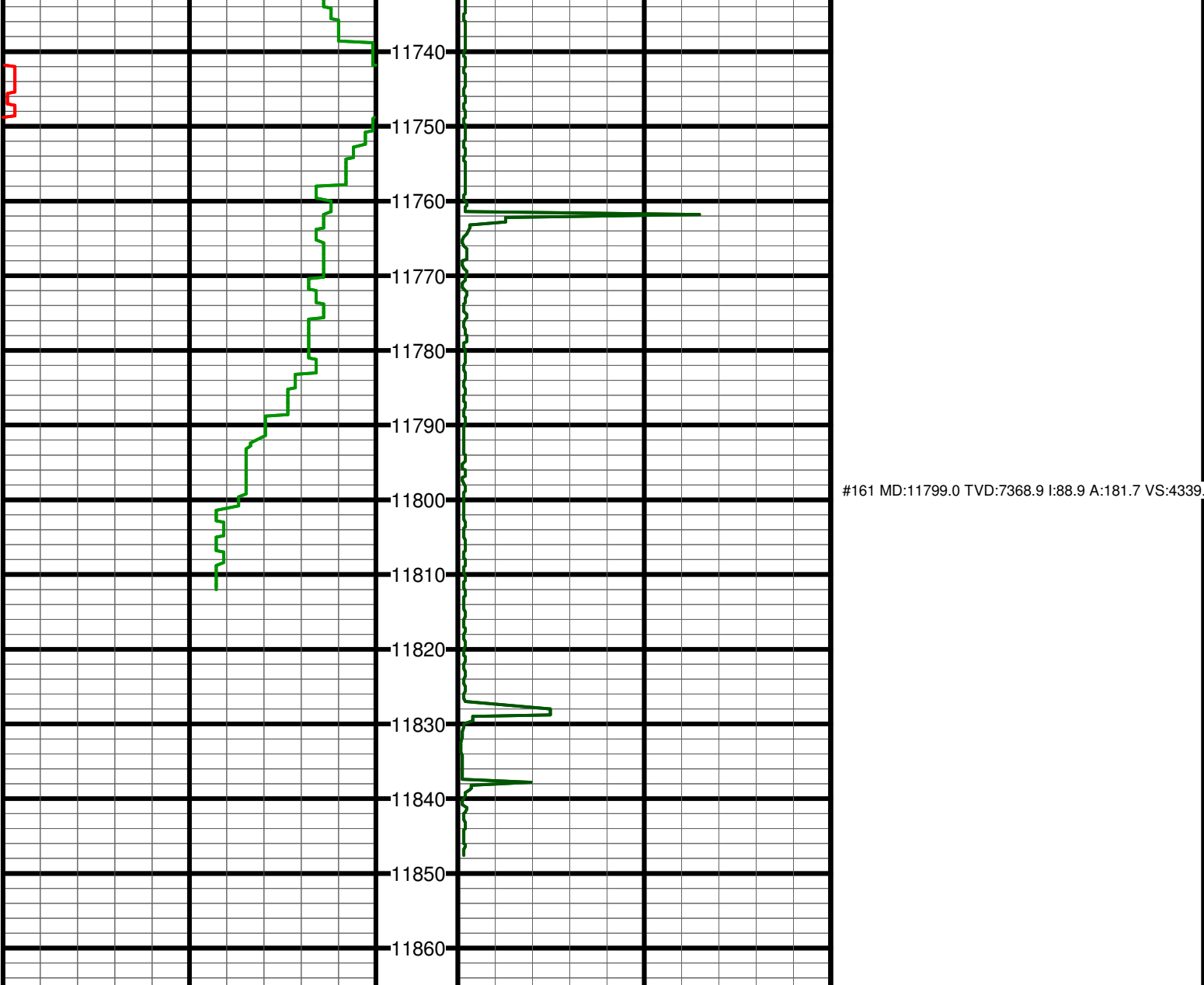
#157 MD:11430.0 TVD:7363.7 I:90.5 A:181.6 VS:3970.5



#158 MD:11525.0 TVD:7363.7 I:89.5 A:181.8 VS:4065.4

#159 MD:11620.0 TVD:7364.8 I:89.2 A:181.9 VS:4160.4

#160 MD:11715.0 TVD:7366.8 I:88.3 A:182.2 VS:4255.3



Depth
5":100' (10')

