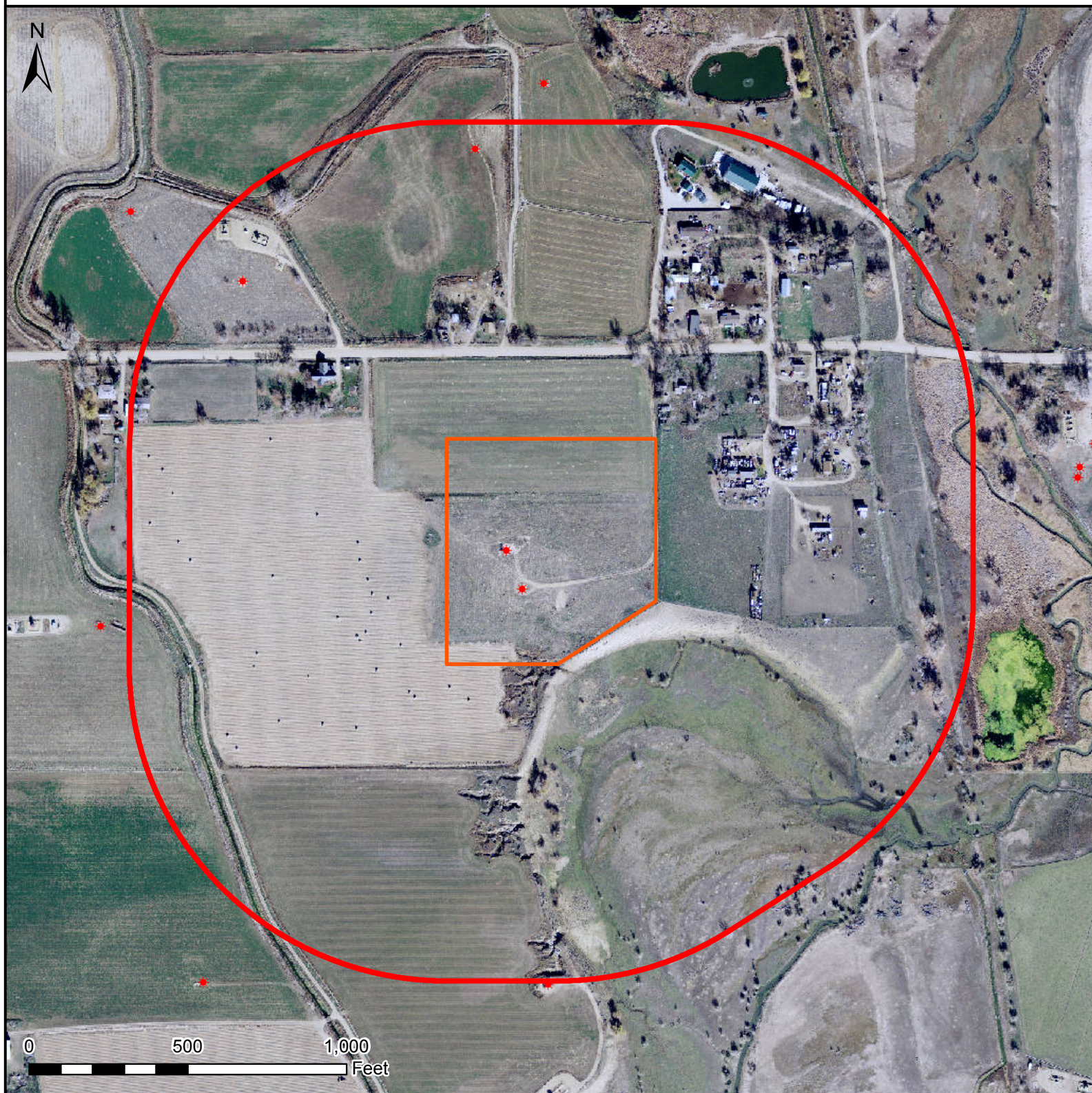


HYDROLOGY MAP KERR 35N-25HZ



Legend

- Well pad (proposed)
- 1000' buffer
- Existing oil/gas well (COGCC)

Nearest Surface Water Feature

Ditch: 787' NE
Ditch elevation: 4875'
Well elevation: 4886'

All measurements are made from
the reference well.



Date created: 10/23/2013
Created by: APC Regulatory GIS
Scale: 1:5,000
Projection: NAD83 UTM 13N