

Company: Omimex Petroleum Inc

Well: Bledsoe 10-3-5-45

Field: Ballyneal

County: Yuma State: Colorado

Directional Survey			
Location:		NWSE Sec. 3, T5N, R45W SHL: 2261' FSL X 2299' FEL	
Permanent Datum:	Ground Level	Elev.:	K.B. 3789.00 ft G.L. 3783.00 ft D.F. 3788.00 ft
Log Measured From:	Kelly Bushing	6.00 ft	above Perm.Datum
Drilling Measured From:	Kelly Bushing		
API Serial No.	Section: 3	Township: 5N	Range: 45W
05-125-11139-0000			
Logging Date	17-Dec-2013		
Run Number	Run1d		
Depth Driller	2697.00 ft		
Schlumberger Depth	2697.00 ft		
Bottom Log Interval	2655.00 ft		
Top Log Interval	466.00 ft		
Casing Driller Size @ Depth	7 in @ 455.00 ft		
Casing Schlumberger	455 ft		
Bit Size	6.25 in		
Type Fluid In Hole	Chemical Gel		
Density	Viscosity		
Fluid Loss	PH		
MUD			
Source of Sample			
RM @ Meas Temp	Active Tank		
RMF @ Meas Temp	0.4 ohm.m	@ 85 degF	
RMC @ Meas Temp	0.32 ohm.m	@ 85 degF	
Source RMF	0.48 ohm.m	@ 68 degF	
RM @ BHT	RMC	Pressed	
RM @ BHT	0.17 @ 212	0.13 @ 212	
Max Recorded Temperatures			
Circulation Stopped	Time	12:00:00	
Logger on Bottom	Time	16:50:30	
Unit Number	Location:	Ft. Morgan, CO	
Recorded By	Tim Hoffman		
Witnessed By	Jeremy Fisher		

Disclaimer

THE USE OF AND RELIANCE UPON THIS RECORDED-DATA BY THE HEREIN NAMED COMPANY (AND ANY OF ITS AFFILIATES, PARTNERS, REPRESENTATIVES, AGENTS, CONSULTANTS AND EMPLOYEES) IS SUBJECT TO THE TERMS AND CONDITIONS AGREED UPON BETWEEN SCHLUMBERGER AND THE COMPANY, INCLUDING: (a) RESTRICTIONS ON USE OF THE RECORDED-DATA; (b) DISCLAIMERS AND WAIVERS OF WARRANTIES AND REPRESENTATIONS REGARDING COMPANY'S USE AND RELIANCE UPON THE RECORDED-DATA; AND (c) CUSTOMER'S FULL AND SOLE RESPONSIBILITY FOR ANY INFERENCE DRAWN OR DECISION MADE IN CONNECTION WITH THE USE OF THIS RECORDED-DATA.

Contents

1. Header
2. Disclaimer
3. Contents
4. Well Sketch
5. Borehole Size/Casing/Tubing Record
6. Operational Run Summary
7. Remarks and Equipment Summary
8. Depth Summary
9. Survey Record
10. Run1d

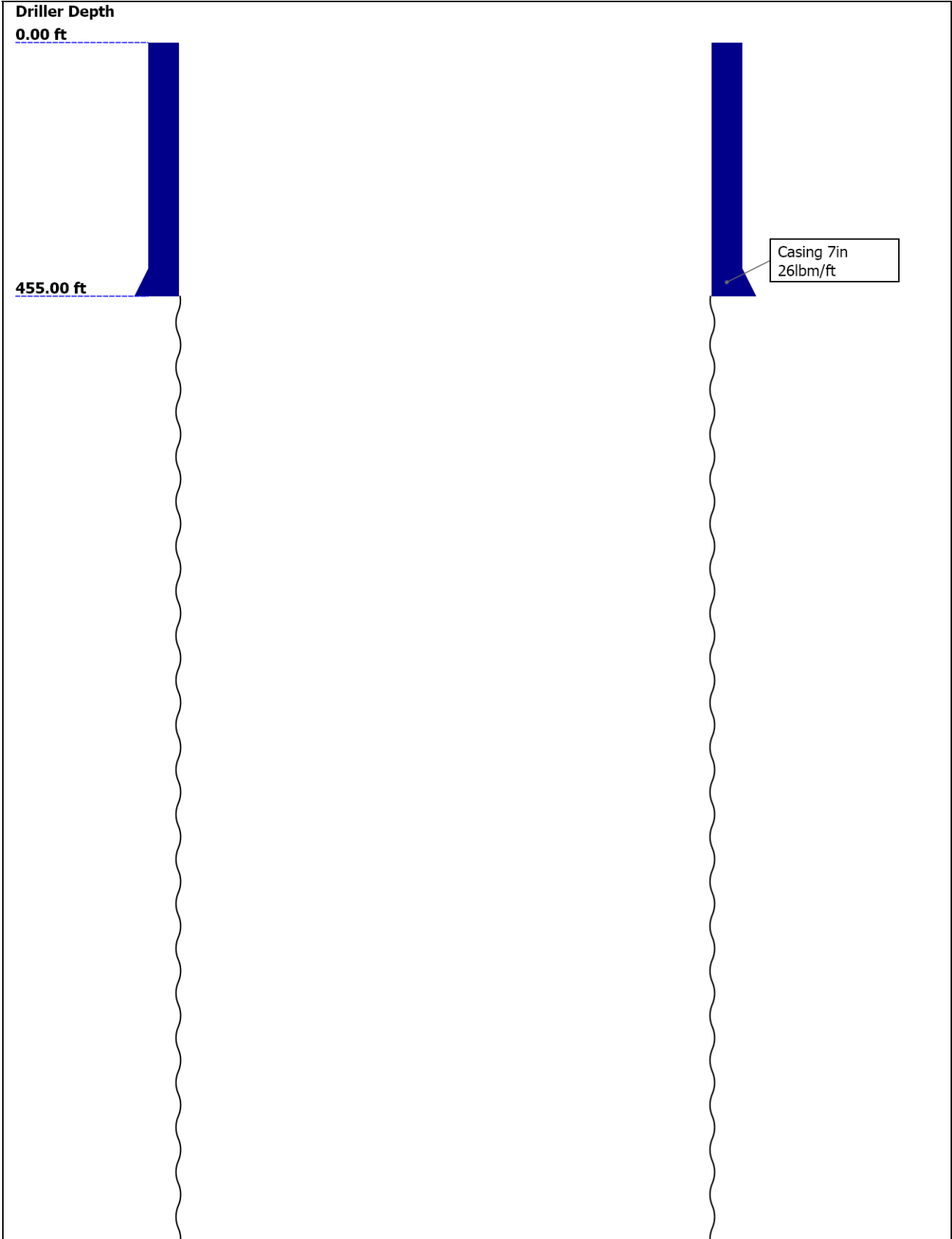
10.1 Integration Summary

10.2 Composite Summary

10.3 Log ( GPIT Inclinometry Log )

10.4 Parameter Listing
11. XYZ ( AX vs. AY\_1 )
12. XYZ ( FX vs. FY\_1 )
13. Tail

Well Sketch



2697.00 ft

Open Hole 6.25in

Borehole Size/Casing/Tubing Record

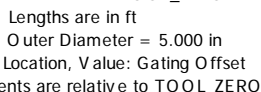
Bit						
Bit Size ( in )	6.25					
Top Driller ( ft )	455					
Top Logger ( ft )	455					
Bottom Driller ( ft )	2697					
Bottom Logger ( ft )	2697					
Casing						
Size ( in )	7					
Weight ( lbm/ft )	26					
Inner Diameter ( in )	6.283					
Top Driller ( ft )	0					
Top Logger ( ft )	0					
Bottom Driller ( ft )	455					
Bottom Logger ( ft )	455					

Operational Run Summary

Parameter ( unit )	Run1d					
Date Log Started	17-Dec-2013					
Time Log Started	16:26:21					
Date Log Finished	17-Dec-2013					
Time Log Finished	17:33:38					
Top Log Interval ( ft )	466.00					
Bottom Log Interval ( ft )	2655.00					
Total Depth ( ft )	2663.00					
Max Hole Deviation ( deg )	1.18					
Azimuth of Max Deviation ( deg )	19.62					
Bit Size ( in )	6.250					
Logging Unit Number	3022					
Logging Unit Location	Ft. Morgan, CO					
Recorded By	Tim Hoffman					
Witnessed By	Jeremy Fisher					
Service Order Number	CCN1-00035					

# Remarks and Equipment Summary

Run1d: Toolstring				Run1d: Remarks
<b>Equip name</b> LEH-QT LEH-QT	<b>Length</b> <b>49.57</b>	<b>MP name</b>	<b>Offset</b>	This is the first run in hole
				Toolstring run as per tool sketch
				Toolstring run without bowspring as per client request
				Matrix: Limestone (2.71 g/cc)
				Rig: Excel Rig 2
<b>DTC-H:8906</b> ECH-KC:9984 DTC-H:8906	<b>46.65</b>	CTEM HV	45.75 0.00	Crew: Jay Musgrave, Derrick Hunter
<b>AH-184</b>	<b>43.65</b>	ToolStatus TelStatus	43.65 43.65	
<b>GPIT-F</b> GPIH-B GPIC-F DHRU-F	<b>41.65</b>	GPIT-F Incl inometer	40.23	
<b>HGNS-B:1918</b> HGNH:2973 NPV-N NSR-F:5069 HACCZ-B:727 HGNS-B:1918 HMCA-B	<b>37.65</b>	GPIT Temperature GR	0.00 37.62 36.91	
<b>HDRS-B:1716</b> ECH-MEB HRCC-B:860 HRMS-B:1716 GSR-J:5094 Long Spacing HRGD-B:1748 Short Spacing GPV-Q Backscatter	<b>28.24</b>	CNL Porosity HGNS HMCA Accelerometer HRCC	30.57 28.24 28.24 0.00 24.24	
<b>AIT-H:398</b> AHIS:398 AHRM	<b>16.00</b>	MCFL Caliper TLD Density	18.81 18.33 17.94	
		Induction Power Supply Temperature	7.91 7.91 7.91	



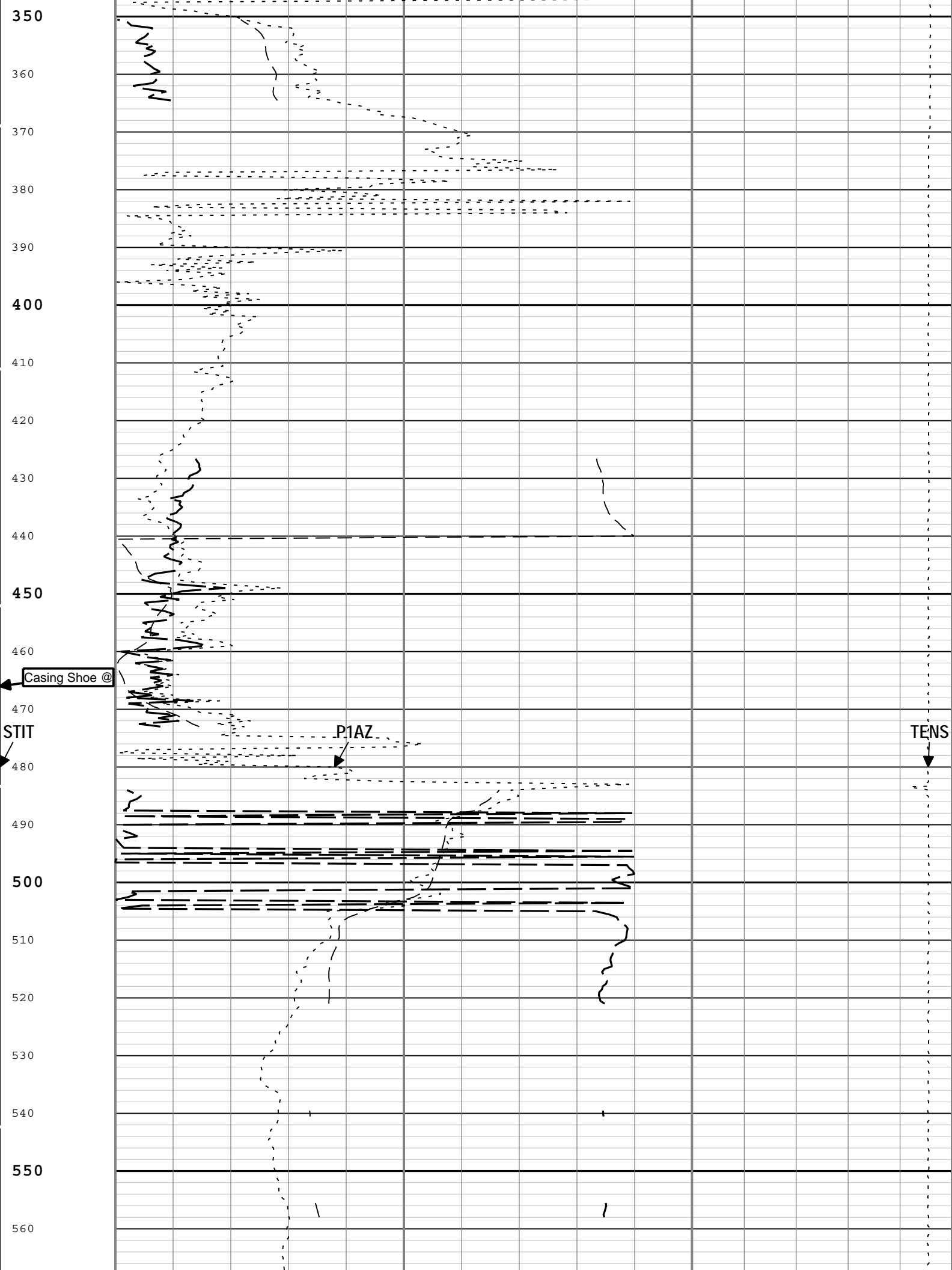
<b>Depth Control Parameters</b>	<b>Run1d</b>		
Conveyance Type	Wireline		
Stretch Correction ( ft )	0.00		
<b>Depth Remark Parameters</b>	<b>Run1d</b>		
Depth Remark 1	All Schlumberger depth policies followed.		
Depth Remark 2	IDW used as primary depth reference. Z-chart used as secondary.		
<b>Depth Measuring Device</b>	<b>Run1d</b>		
Type	IDW-B		
Wheel Correction 1	1		
Wheel Correction 2	0		
<b>Tension Device</b>	<b>Run1d</b>		
Type	CMTD-B/A		
Calibration Points	0		
<b>Logging Cable</b>	<b>Run1d</b>		
Type	7-46NT-XS		
Logging Cable Length ( ft )	24000.00		

Survey Calculation					
Method :		Minimum Radius of Curvature		DLS Method :	
North Reference :		True North		Total Correction Formula :	
				Lubinski	
				Magnetic Dec	
Rig Location					
Latitude :		40.431219 degrees		Longitude :	
				-102.36701 degrees	
Tie In Point					
Measured Depth:		466.00 ft	Inclination:	0.00 deg	Azimuth:
					0.00 deg
True Vertical Depth:		0.00 ft	North Displacement:	0.00 ft	East Displacement:
					0.00 ft
Survey Quality Index					
Q : Manual		28 : Tie-In Point			
Survey Correction Index					
C : No correction					

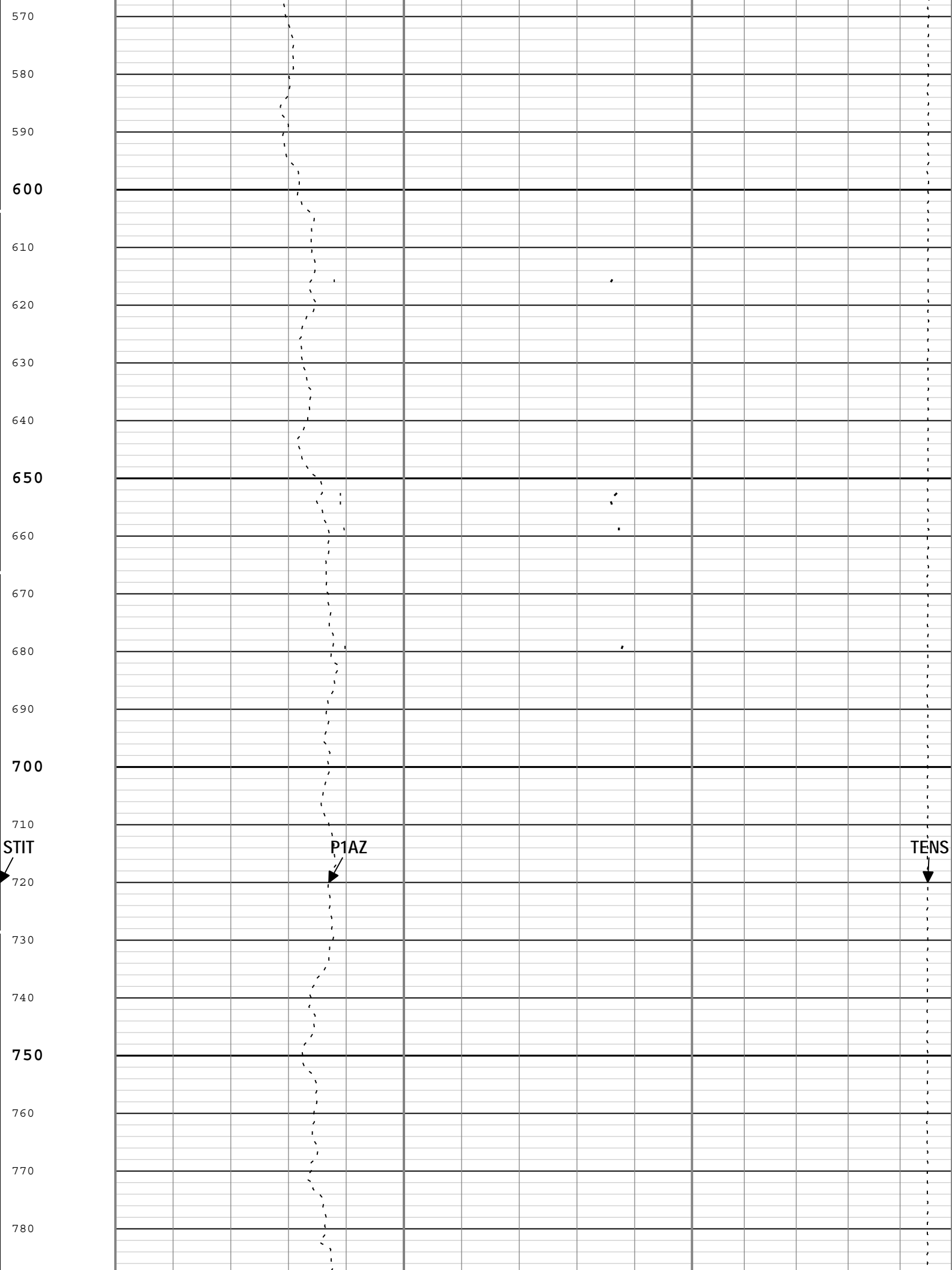
Survey Description Index															
0 : Not Flagged Survey															
Seq	MD (ft)	Incl (deg)	Azim (deg)	Course (ft)	TVD (ft)	V Sec (ft)	N/ -S (ft)	E/ -W (ft)	Closure (ft)	at Azim (deg)	DLS deg/100ft	Tool Type	QI	CI	DI
1	466.00	0.00	0.00	----	0.00	0.00	0.00	0.00	0.00	90.00	0.00	TIP	28	0	0
2	469.00	0.57	154.93	3.00	3.00	-0.01	-0.01	0.01	0.00	154.93	18.95	GPIT-F	9	0	0
3	499.00	0.50	135.15	30.00	33.00	0.24	0.24	0.16	0.30	146.17	0.65	GPIT-F	9	0	0

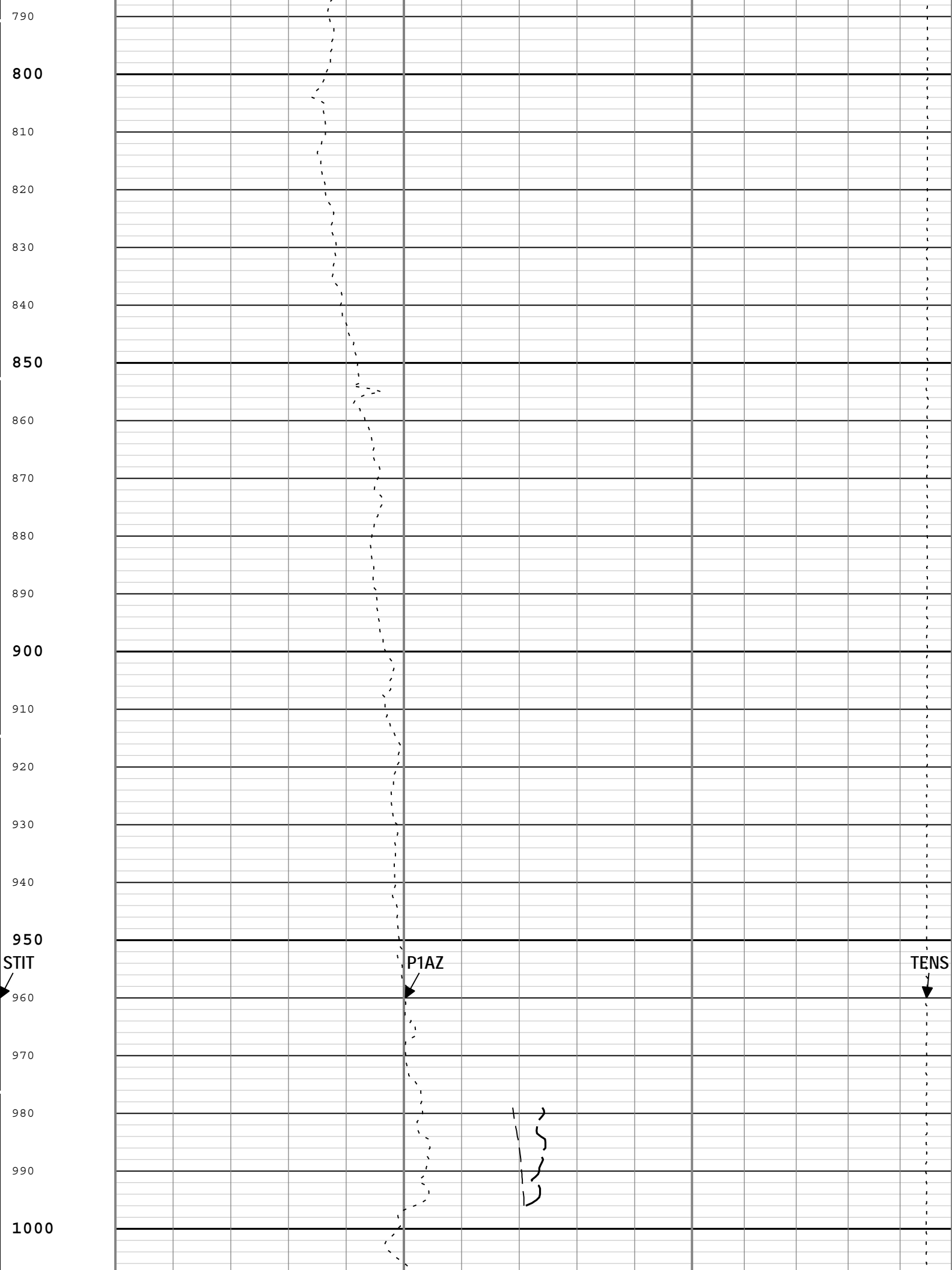
	499.00	0.36	133.13	30.00	33.00	-0.24	-0.24	0.10	0.30	140.17	0.03	GPIT-F	9	0	0
4	529.00	0.48	140.66	30.00	63.00	-0.43	-0.43	0.33	0.56	142.27	0.16	GPIT-F	9	0	0
5	559.00	0.49	146.33	30.00	93.00	-0.64	-0.64	0.49	0.79	142.67	0.16	GPIT-F	9	0	0
6	589.00	0.49	148.43	30.00	123.00	-0.85	-0.85	0.62	1.05	143.81	0.06	GPIT-F	9	0	0
7	619.00	0.50	158.38	30.00	152.99	-1.08	-1.08	0.74	1.31	145.70	0.29	GPIT-F	9	0	0
8	649.00	0.48	158.43	30.00	182.99	-1.32	-1.32	0.83	1.57	147.78	0.06	GPIT-F	9	0	0
9	679.00	0.48	160.28	30.00	212.99	-1.56	-1.56	0.92	1.80	149.38	0.05	GPIT-F	9	0	0
10	709.00	0.45	152.47	30.00	242.99	-1.78	-1.78	1.02	2.07	150.23	0.24	GPIT-F	9	0	0
11	739.00	0.45	161.20	30.00	272.99	-2.00	-2.00	1.11	2.30	150.90	0.23	GPIT-F	9	0	0
12	769.00	0.43	163.41	30.00	302.99	-2.22	-2.22	1.18	2.53	151.94	0.09	GPIT-F	9	0	0
13	799.00	0.38	177.54	30.00	332.99	-2.43	-2.43	1.22	2.72	153.32	0.36	GPIT-F	9	0	0
14	829.00	0.37	210.68	30.00	362.99	-2.61	-2.61	1.17	2.85	155.78	0.72	GPIT-F	9	0	0
15	859.00	0.37	227.93	30.00	392.99	-2.76	-2.76	1.05	2.95	159.09	0.37	GPIT-F	9	0	0
16	889.00	0.39	245.70	30.00	422.99	-2.86	-2.86	0.89	2.99	162.72	0.39	GPIT-F	9	0	0
17	919.00	0.43	262.83	30.00	452.99	-2.92	-2.92	0.69	2.99	166.79	0.44	GPIT-F	9	0	0
18	949.00	0.53	281.05	30.00	482.98	-2.91	-2.91	0.44	2.95	171.44	0.59	GPIT-F	9	0	0
19	979.00	0.55	294.01	30.00	512.98	-2.82	-2.82	0.17	2.82	176.54	0.41	GPIT-F	9	0	0
20	1009.00	0.51	306.39	30.00	542.98	-2.68	-2.68	-0.07	2.69	181.44	0.40	GPIT-F	9	0	0
21	1039.00	0.60	311.05	30.00	572.98	-2.50	-2.50	-0.29	2.53	186.70	0.35	GPIT-F	9	0	0
22	1069.00	0.56	317.48	30.00	602.98	-2.29	-2.29	-0.51	2.33	192.63	0.26	GPIT-F	9	0	0
23	1099.00	0.65	322.62	30.00	632.98	-2.05	-2.05	-0.72	2.17	199.28	0.34	GPIT-F	9	0	0
24	1129.00	0.66	324.79	30.00	662.98	-1.77	-1.77	-0.92	2.00	207.41	0.09	GPIT-F	9	0	0
25	1159.00	0.77	324.66	30.00	692.97	-1.47	-1.47	-1.13	1.84	217.71	0.36	GPIT-F	9	0	0
26	1189.00	1.05	329.34	30.00	722.97	-1.07	-1.07	-1.39	1.74	232.50	0.98	GPIT-F	9	0	0
27	1219.00	0.85	8.11	30.00	752.97	-0.61	-0.61	-1.50	1.61	247.88	2.19	GPIT-F	9	0	0
28	1249.00	1.05	9.68	30.00	782.96	-0.12	-0.12	-1.42	1.41	265.35	0.68	GPIT-F	9	0	0
29	1279.00	1.02	14.54	30.00	812.96	0.42	0.42	-1.31	1.38	287.66	0.31	GPIT-F	9	0	0
30	1309.00	1.12	16.12	30.00	842.95	0.96	0.96	-1.16	1.51	309.55	0.33	GPIT-F	9	0	0
31	1339.00	1.18	19.62	30.00	872.95	1.53	1.53	-0.97	1.80	327.53	0.32	GPIT-F	9	0	0
32	1369.00	1.12	22.86	30.00	902.94	2.09	2.09	-0.76	2.23	340.12	0.31	GPIT-F	9	0	0
33	1399.00	1.09	22.12	30.00	932.93	2.62	2.62	-0.53	2.69	348.47	0.11	GPIT-F	9	0	0
34	1429.00	1.11	22.62	30.00	962.93	3.15	3.15	-0.32	3.18	354.28	0.08	GPIT-F	9	0	0
35	1459.00	0.97	32.37	30.00	992.92	3.64	3.64	-0.07	3.64	358.93	0.74	GPIT-F	9	0	0
36	1489.00	0.90	43.98	30.00	1022.92	4.02	4.02	0.23	4.04	3.31	0.68	GPIT-F	9	0	0
37	1519.00	0.98	52.54	30.00	1052.92	4.35	4.35	0.60	4.40	7.86	0.54	GPIT-F	9	0	0
38	1549.00	0.53	23.30	30.00	1082.91	4.63	4.63	0.86	4.72	10.51	1.93	GPIT-F	9	0	0
39	1579.00	0.55	21.12	30.00	1112.91	4.89	4.89	0.97	4.99	11.17	0.09	GPIT-F	9	0	0
40	1609.00	0.53	17.06	30.00	1142.91	5.16	5.16	1.06	5.28	11.60	0.14	GPIT-F	9	0	0
41	1639.00	0.47	29.47	30.00	1172.91	5.40	5.40	1.16	5.51	12.13	0.41	GPIT-F	9	0	0
42	1669.00	0.45	40.58	30.00	1202.91	5.60	5.60	1.30	5.74	13.06	0.31	GPIT-F	9	0	0
43	1699.00	0.64	44.63	30.00	1232.91	5.81	5.81	1.49	6.00	14.41	0.66	GPIT-F	9	0	0
44	1729.00	0.50	70.62	30.00	1262.91	5.97	5.97	1.73	6.20	16.19	0.98	GPIT-F	9	0	0
45	1759.00	0.59	66.45	30.00	1292.90	6.07	6.07	2.00	6.40	18.19	0.33	GPIT-F	9	0	0
46	1789.00	0.56	87.33	30.00	1322.90	6.14	6.14	2.28	6.56	20.39	0.70	GPIT-F	9	0	0
47	1819.00	0.60	81.79	30.00	1352.90	6.17	6.17	2.58	6.69	22.72	0.24	GPIT-F	9	0	0
48	1849.00	0.58	79.45	30.00	1382.90	6.22	6.22	2.89	6.86	24.92	0.10	GPIT-F	9	0	0
49	1879.00	0.64	87.19	30.00	1412.90	6.26	6.26	3.21	7.02	27.14	0.33	GPIT-F	9	0	0
50	1909.00	0.62	71.11	30.00	1442.90	6.32	6.32	3.53	7.25	29.18	0.59	GPIT-F	9	0	0
51	1939.00	0.71	76.12	30.00	1472.89	6.42	6.42	3.86	7.48	31.06	0.36	GPIT-F	9	0	0
52	1969.00	0.80	80.56	30.00	1502.89	6.50	6.50	4.25	7.78	33.21	0.35	GPIT-F	9	0	0
53	1999.00	0.79	74.95	30.00	1532.89	6.58	6.58	4.66	8.07	35.28	0.26	GPIT-F	9	0	0
54	2029.00	0.85	55.69	30.00	1562.89	6.76	6.76	5.04	8.43	36.70	0.93	GPIT-F	9	0	0
55	2059.00	0.67	49.70	30.00	1592.88	7.00	7.00	5.36	8.83	37.43	0.64	GPIT-F	9	0	0
56	2089.00	0.68	42.72	30.00	1622.88	7.25	7.25	5.62	9.15	37.77	0.28	GPIT-F	9	0	0
57	2119.00	0.87	82.82	30.00	1652.88	7.51	7.51	5.85	9.51	37.88	0.14	GPIT-F	9	0	0

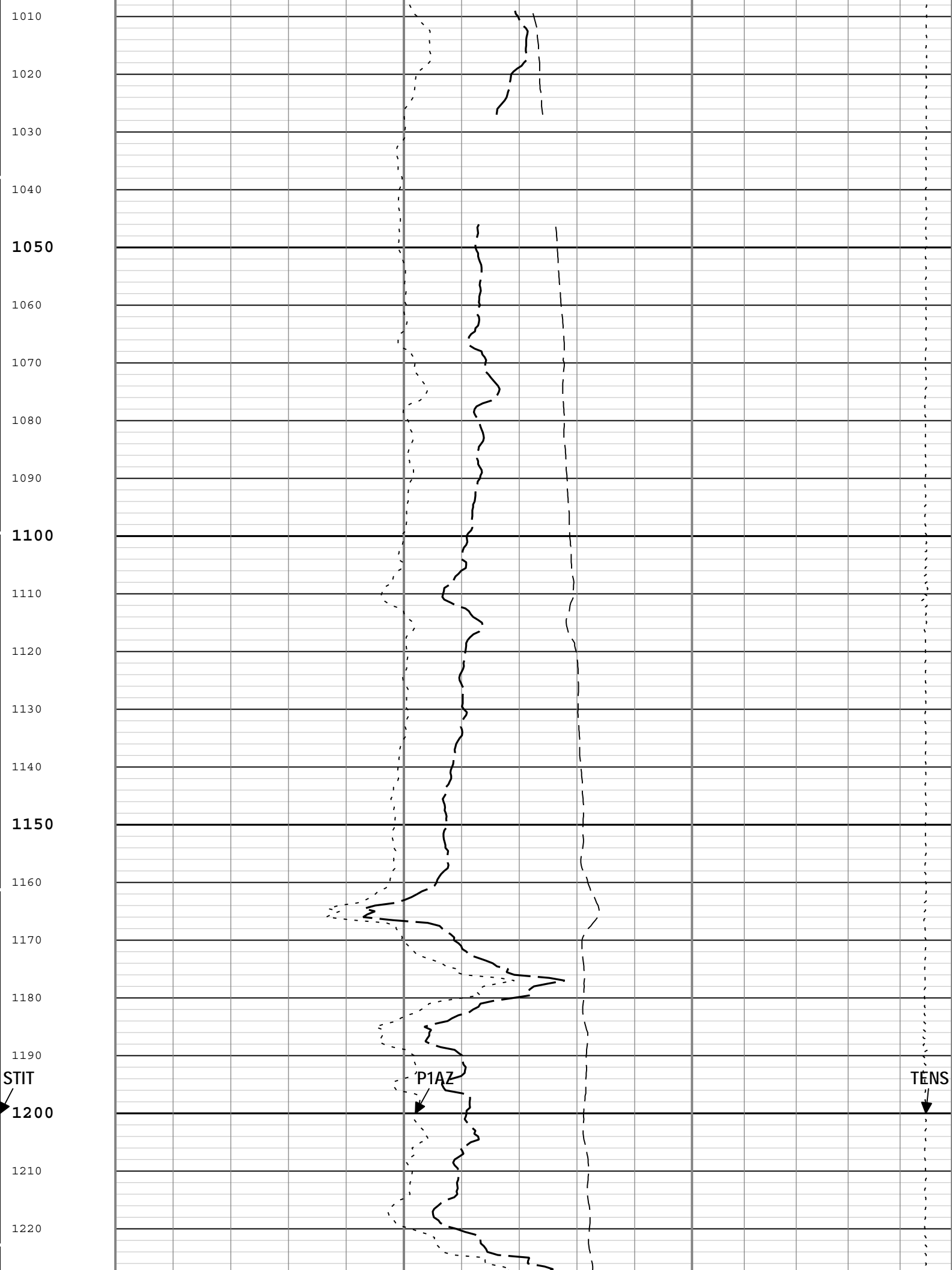
[illegible]

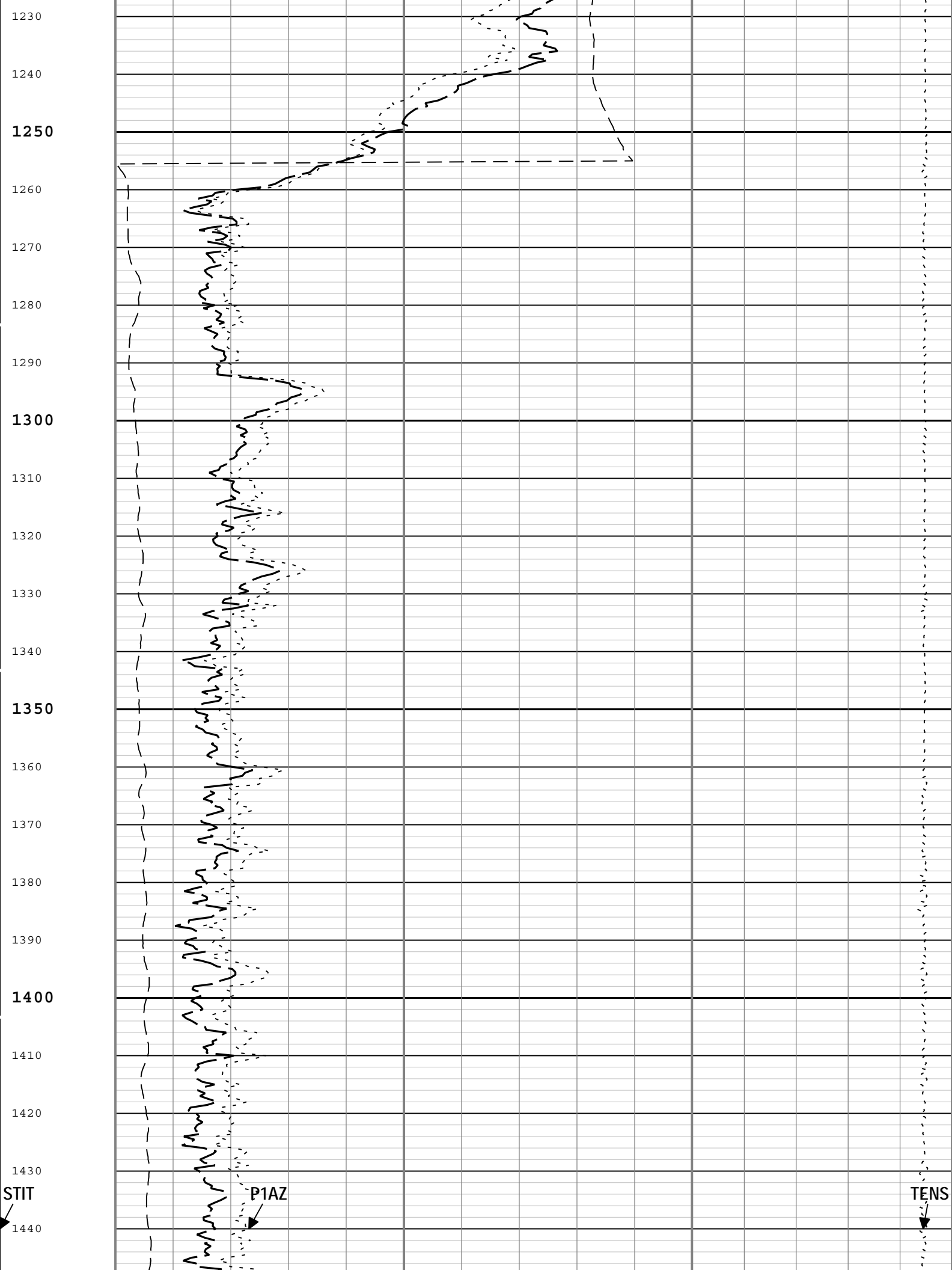


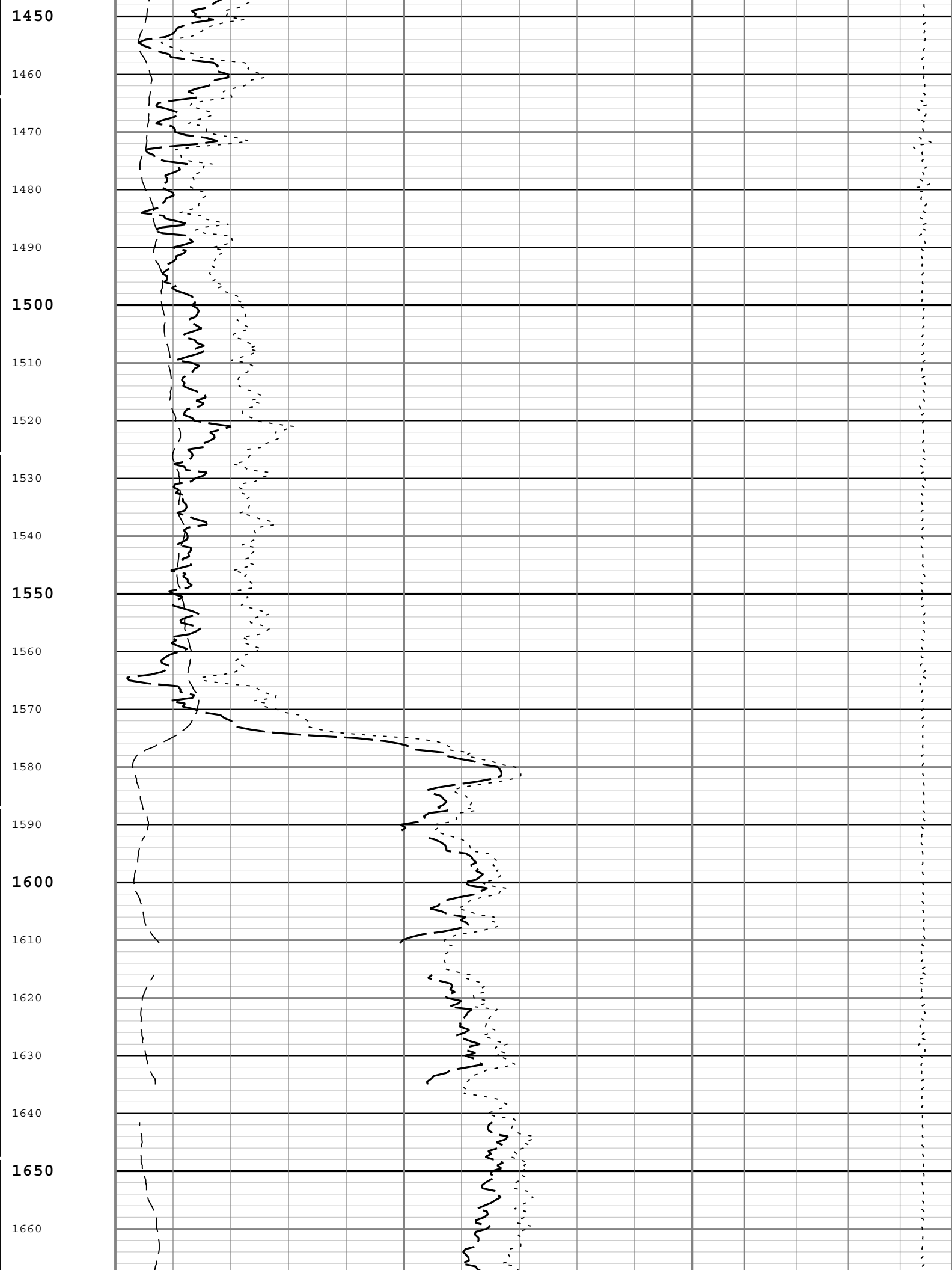


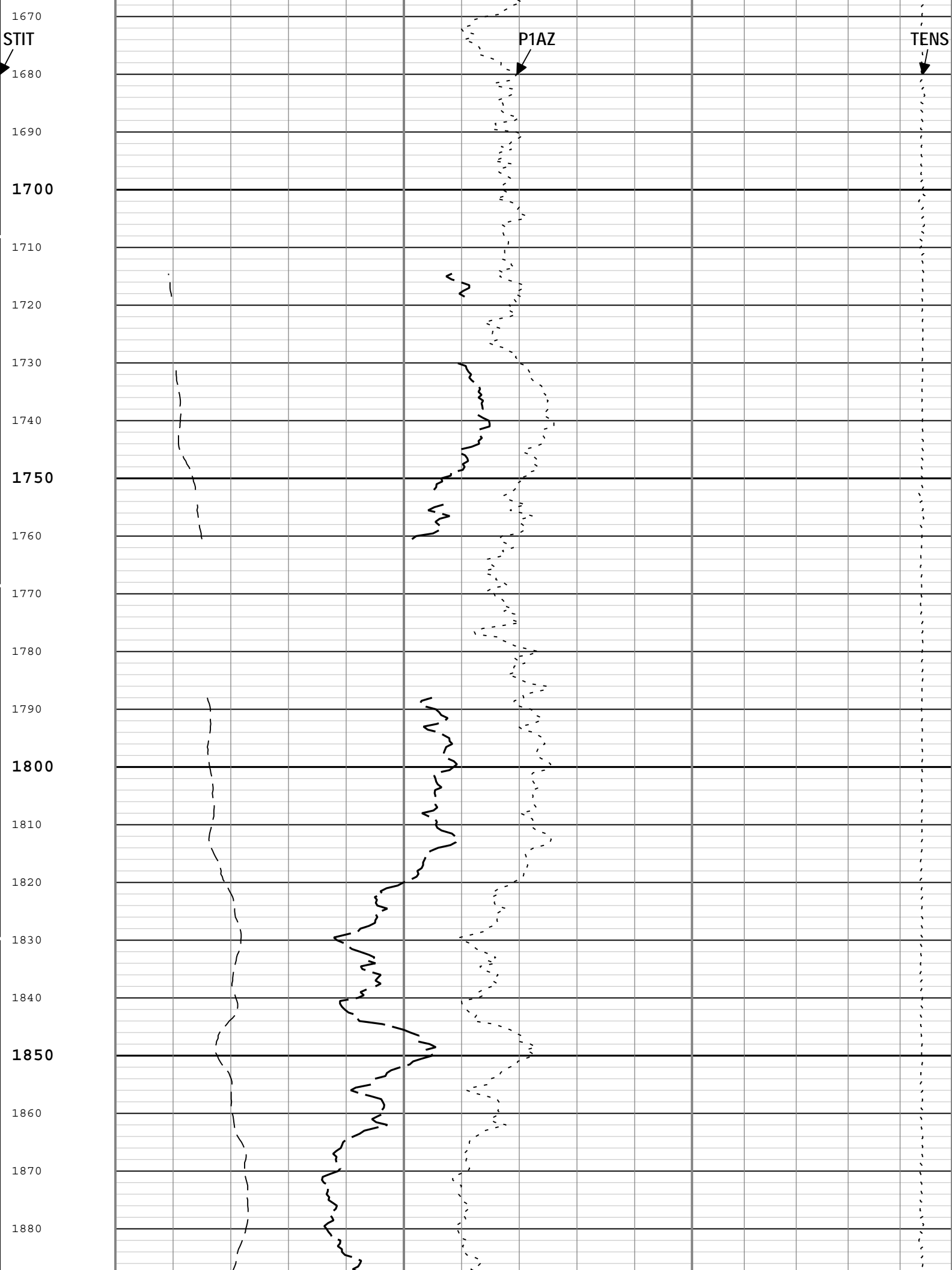


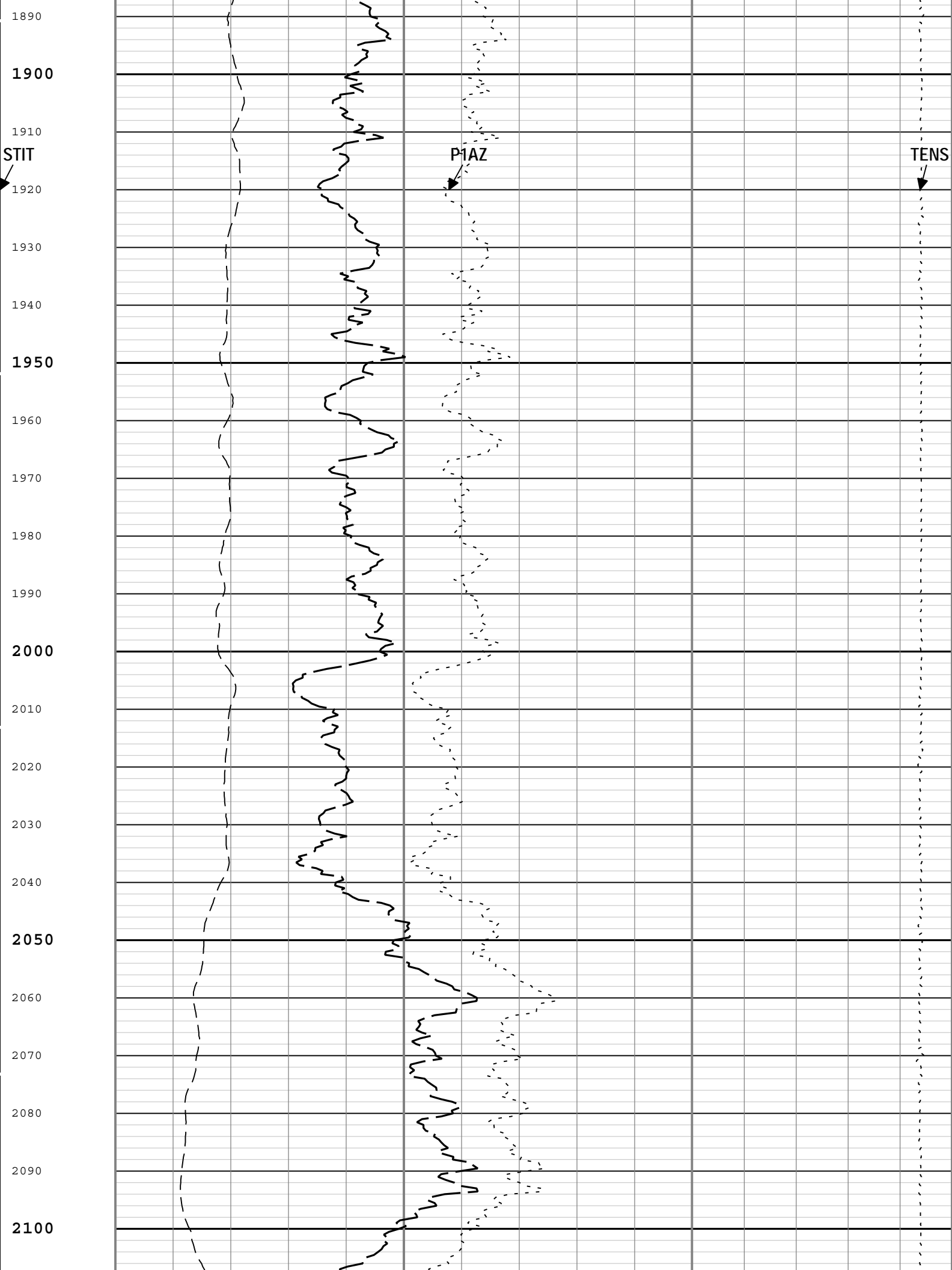


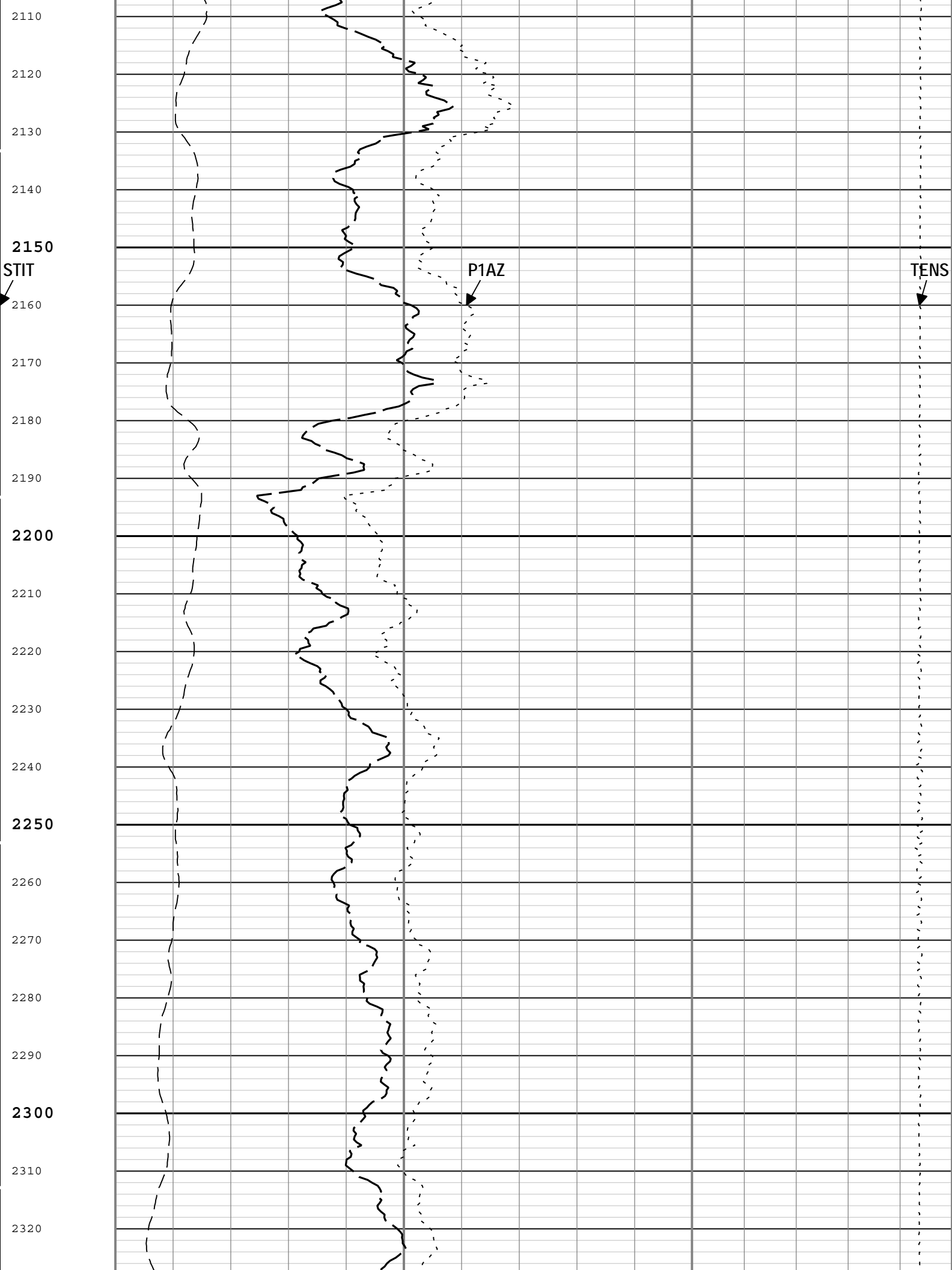




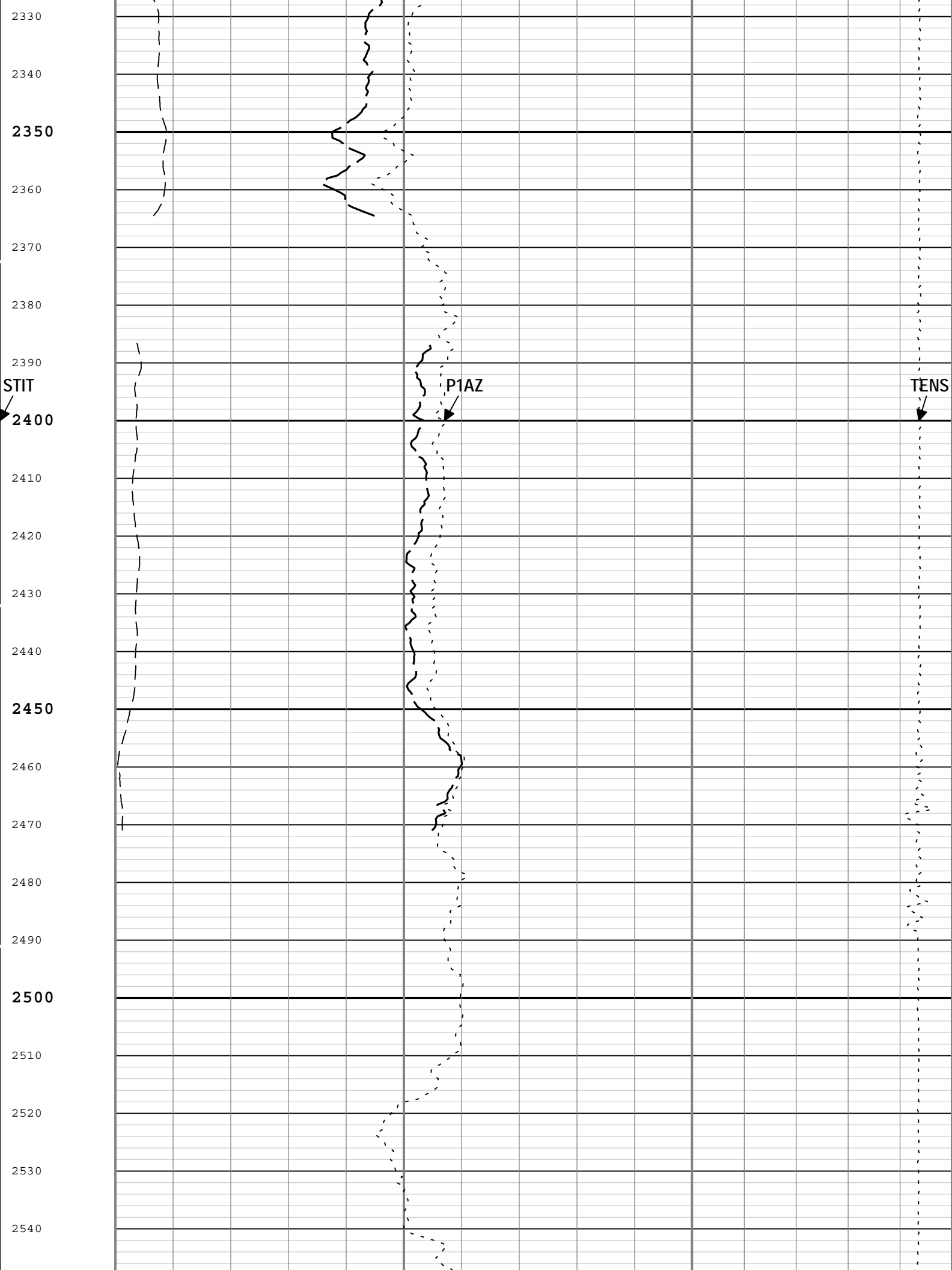


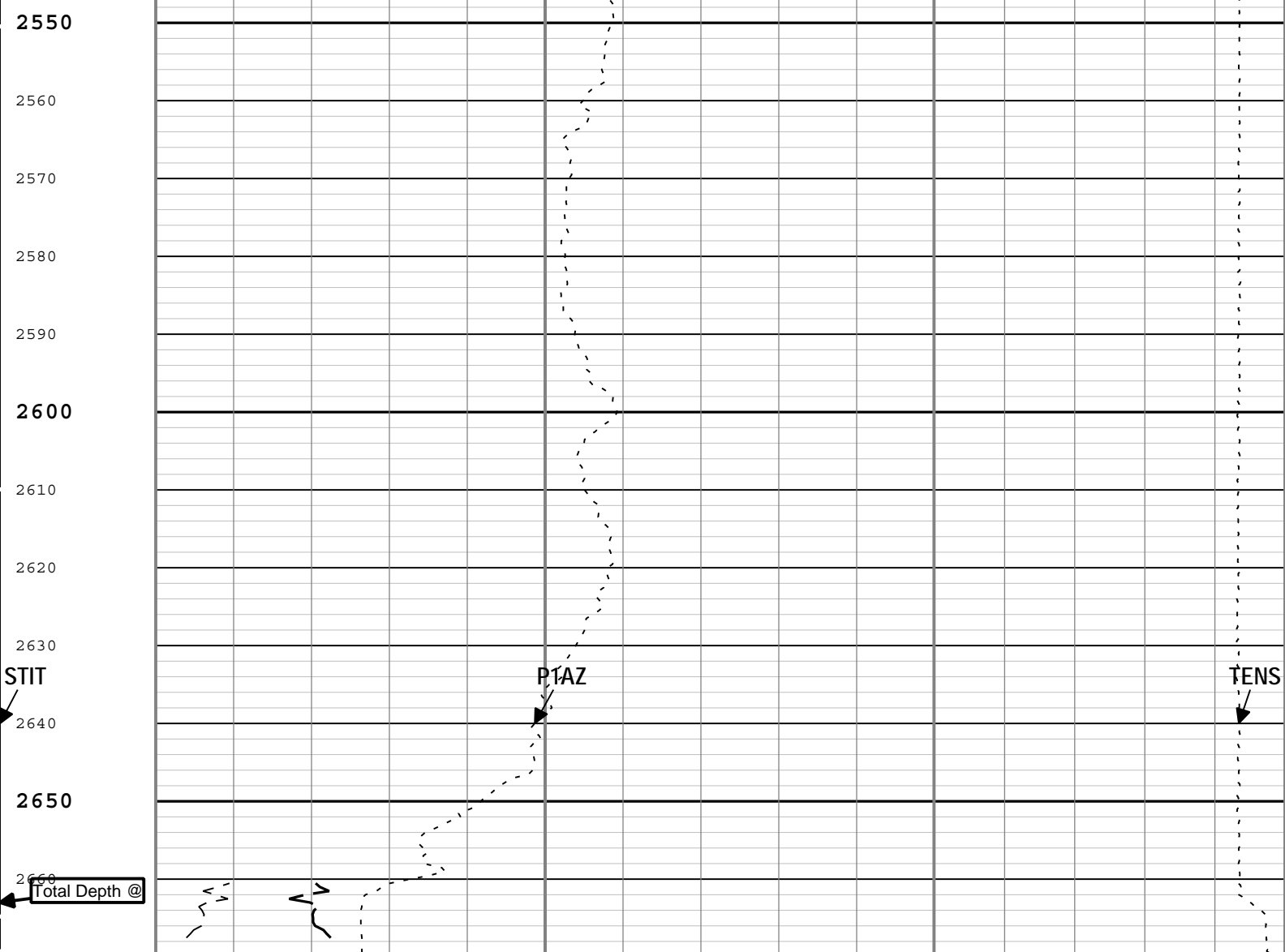










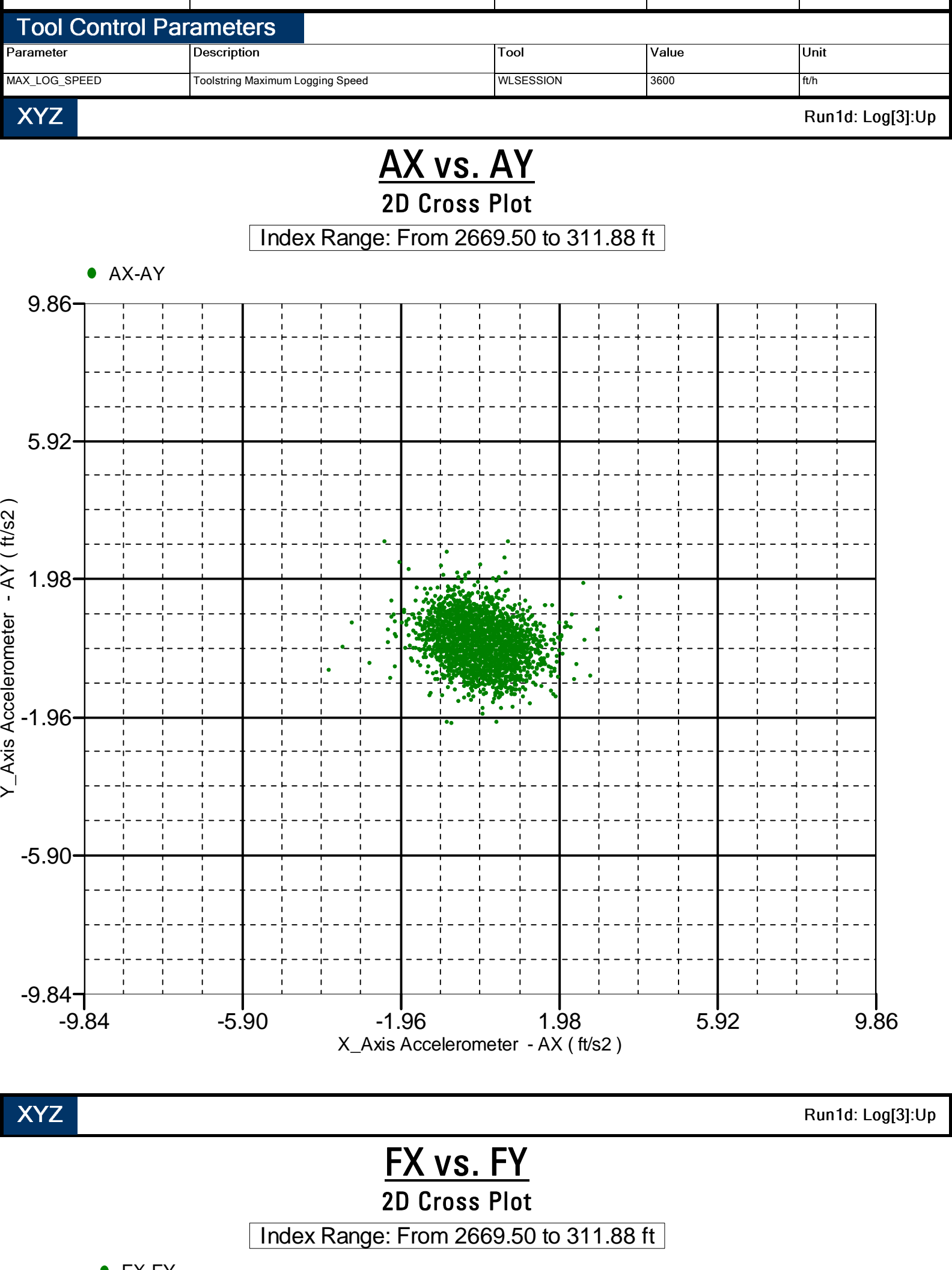


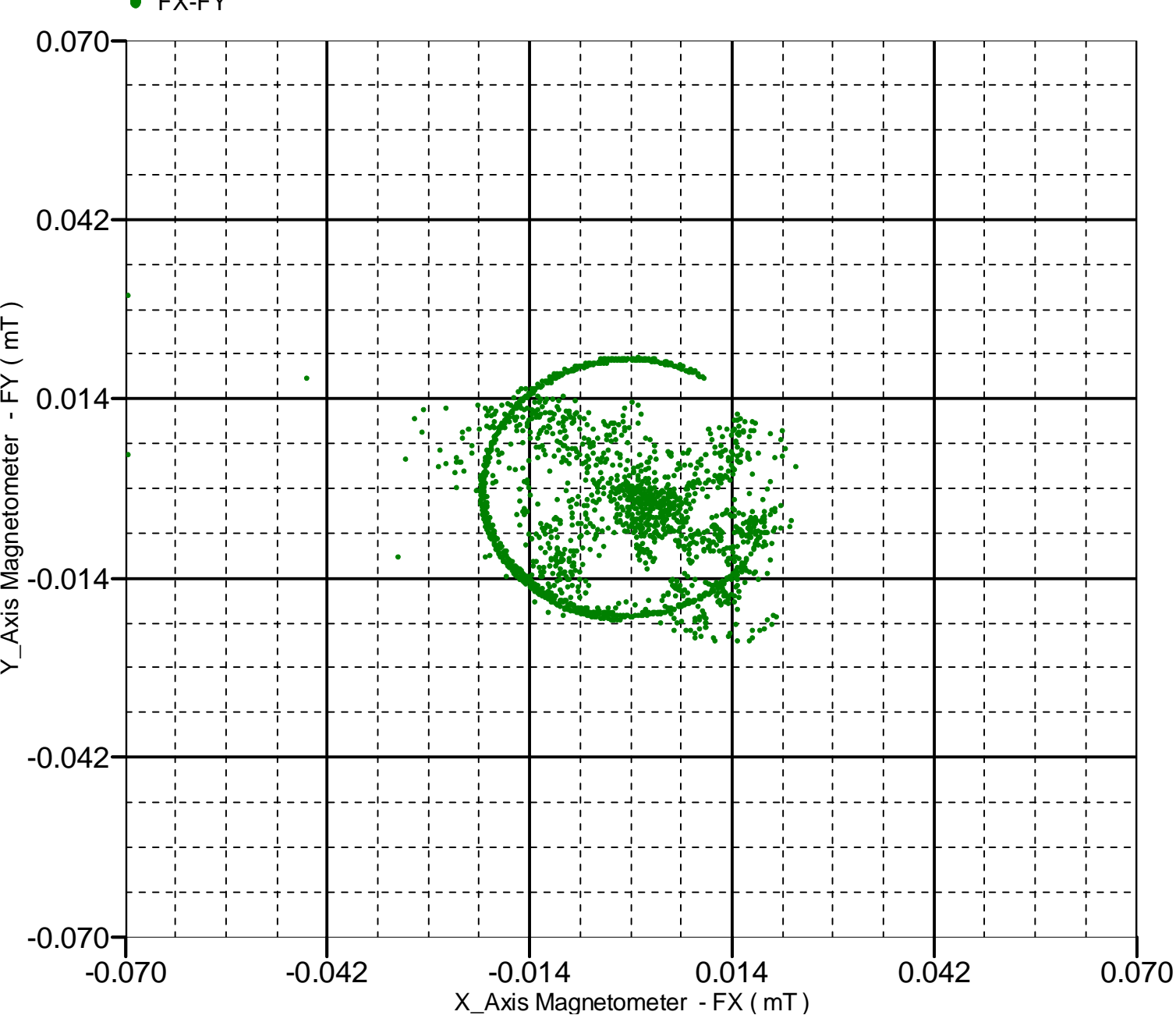
Stuck Tool Indicator, Total (STIT)	Hole Azimuth Relative to True North (HAZI) GPIT-F		Cable Tension (TENS)	
	0	400	10000	0
0	Absent (SDEV lower than PADT)		lbf	
	Present (SDEV greater than PADT)			
1				
Cable Drag	Pad 1 Azimuth in Horizontal Plane (0 = True North) (P1AZ) GPIT-F			
	0	400		
	Relative Bearing (RB) GPIT-F			
	0	400		
	Absent (SDEV lower than PADT)			
	Present (SDEV greater than PADT)			
0				
1				

TIME\_1900 - Time Marked every 60.00 (s)

Description: GPIT inclinometry log   Format: Log ( GPIT Inclinometry Log )   Index Scale: 5 in per 100 ft   Index Unit: ft   Index Type: Measured Depth  
Creation Date: 17-Dec-2013 17:53:10

Channel Processing Parameters				
Parameter	Description	Tool	Value	Unit
CBLO	Casing Bottom (Logger)	WLSESSION	455	ft
ICMO	Inclinometry Computation Mode	GPIT-F	Automatic Selection	
LOG_SPEED_RNG	Logging Speed Range	GPIT-F	Normal (600 ft/h - 3600 ft/h)	
TD	Total Measured Depth	Borehole	2663	ft
USER_LOCB	User-supplied values for Magnetic Flux Density	WLSESSION	53006.36	nT
USER_MDEC	User-supplied values for Magnetic Declination	WLSESSION	7.29	deg
USER_MDIP	User-supplied values for Magnetic Dip Angle	WLSESSION	67.33	deg





Company: Omimex Petroleum Inc

**Schlumberger**

Well: Bledsoe 10-3-5-45

Field: Ballyneal

County: Yuma

State: Colorado

Directional Survey