

Company: Omimex Petroleum Inc

Well: Bledsoe 10-3-5-45

Field: Ballyneal

County: Yuma State: Colorado

County: Yuma	Platform Express		
	Caliper		
	Cement Volume		
	Location:		
	NWSE Sec. 3, T5N, R45W SHL: 2261' FSL X 2299' FEL	Elev. K.B. 3789.00 ft G.L. 3783.00 ft D.F. 3788.00 ft	
County:	Field:	Location:	
		Permanent Datum:	Ground Level
		Log Measured From:	Kelly Bushing
		Drilling Measured From:	Kelly Bushing
	API Serial No.	Section:	Township:
	05-125-11139-0000	3	5N
			Range: 45W
Logging Date	17-Dec-2013		
Run Number	Run1d		
Depth Driller	2697.00 ft		
Schlumberger Depth	2697.00 ft		
Bottom Log Interval	2655.00 ft		
Top Log Interval	466.00 ft		
Casing Driller Size @ Depth	7 in @ 455.00 ft		
Casing Schlumberger	455 ft		
Bit Size	6.25 in		
Type Fluid In Hole	Chemical Gel		
Density	Viscosity		
Fluid Loss	PH		
MUD			
Source of Sample			
RM @ Meas Temp	Active Tank		
RMF @ Meas Temp	0.4 ohm.m	@	85 degF
RMC @ Meas Temp	0.32 ohm.m	@	85 degF
Source RMF	0.48 ohm.m	@	68 degF
RM @ BHT	RMC	Pressed	
RM @ BHT	RMF @ BHT	0.17 @ 212	0.13 @ 212
Max Recorded Temperatures			
Circulation Stopped		Time	12:00:00
Logger on Bottom		Time	16:50:30
Unit Number	Location:	3022	Ft. Morgan, CO
Recorded By	Tim Hoffman		
Witnessed By	Jeremy Fisher		

Disclaimer

THE USE OF AND RELIANCE UPON THIS RECORDED-DATA BY THE HEREIN NAMED COMPANY (AND ANY OF ITS AFFILIATES, PARTNERS, REPRESENTATIVES, AGENTS, CONSULTANTS AND EMPLOYEES) IS SUBJECT TO THE TERMS AND CONDITIONS AGREED UPON BETWEEN SCHLUMBERGER AND THE COMPANY, INCLUDING: (a) RESTRICTIONS ON USE OF THE RECORDED-DATA; (b) DISCLAIMERS AND WAIVERS OF WARRANTIES AND REPRESENTATIONS REGARDING COMPANY'S USE AND RELIANCE UPON THE RECORDED-DATA; AND (c) CUSTOMER'S FULL AND SOLE RESPONSIBILITY FOR ANY INFERENCE DRAWN OR DECISION MADE IN CONNECTION WITH THE USE OF THIS RECORDED-DATA.

Contents

1. Header
2. Disclaimer
3. Contents
4. Well Sketch
5. Borehole Size/Casing/Tubing Record
6. Operational Run Summary
7. Remarks and Equipment Summary
8. Depth Summary
9. Run1d 5" Caliper

9.1 Integration Summary

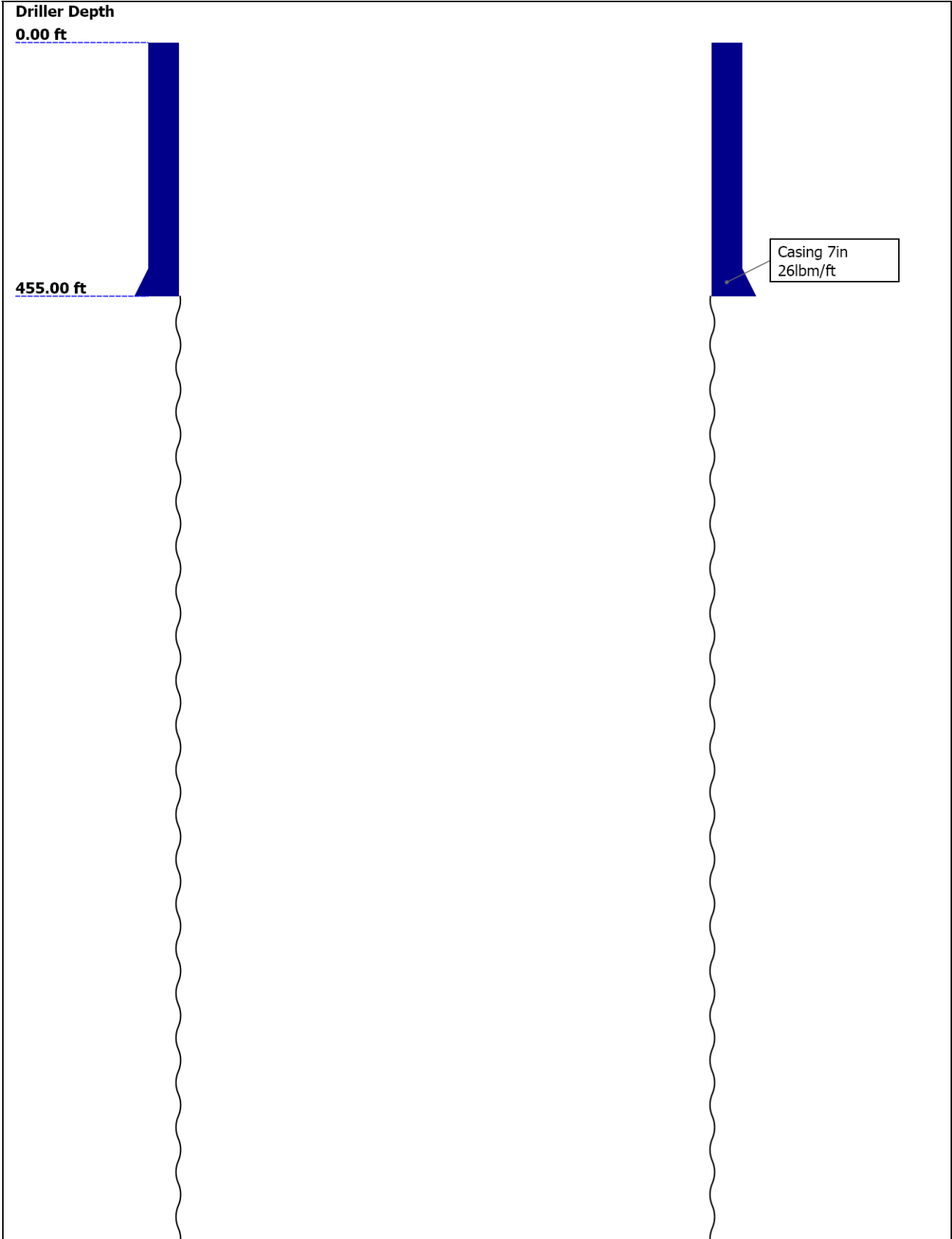
9.2 Software Version

9.3 Composite Summary

9.4 Log (Noble East Caliper)

9.5 Parameter Listing
10. Tail

Well Sketch



2697.00 ft

Open Hole 6.25in

Borehole Size/Casing/Tubing Record

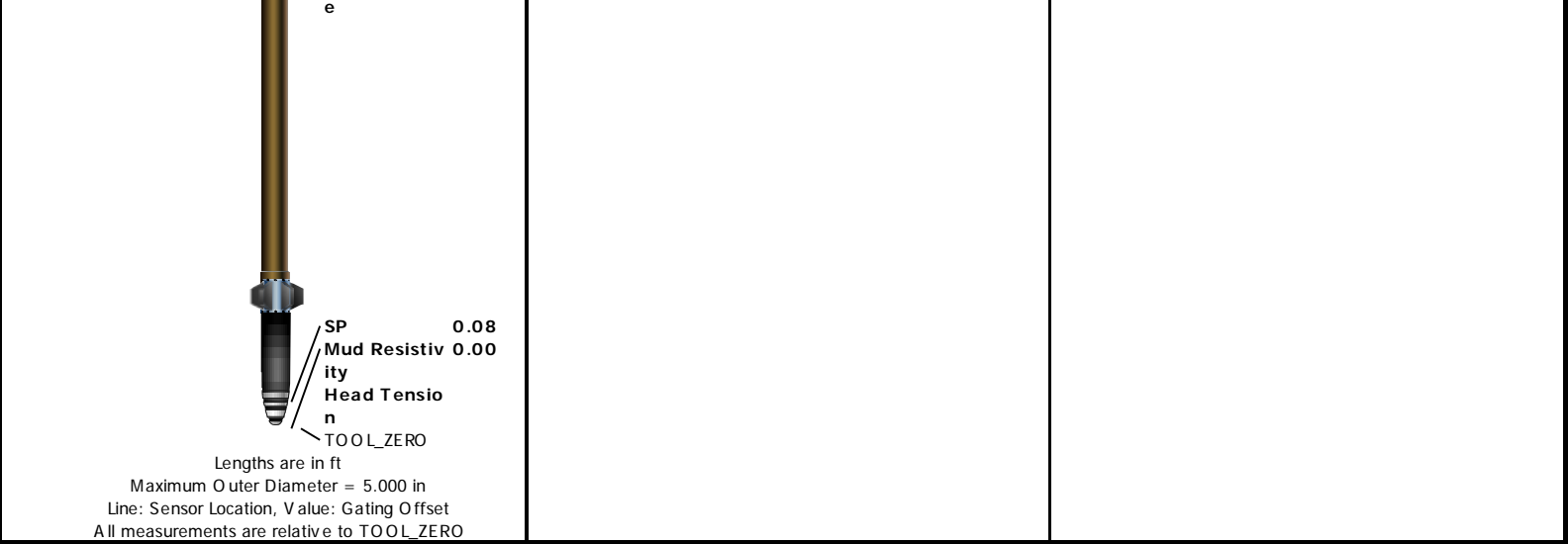
Bit						
Bit Size (in)	6.25					
Top Driller (ft)	455					
Top Logger (ft)	455					
Bottom Driller (ft)	2697					
Bottom Logger (ft)	2697					
Casing						
Size (in)	7					
Weight (lbm/ft)	26					
Inner Diameter (in)	6.283					
Top Driller (ft)	0					
Top Logger (ft)	0					
Bottom Driller (ft)	455					
Bottom Logger (ft)	455					

Operational Run Summary

Parameter (unit)	Run1d					
Date Log Started	17-Dec-2013					
Time Log Started	16:26:21					
Date Log Finished	17-Dec-2013					
Time Log Finished	17:33:38					
Top Log Interval (ft)	466.00					
Bottom Log Interval (ft)	2655.00					
Total Depth (ft)	2663.00					
Max Hole Deviation (deg)	1.18					
Azimuth of Max Deviation (deg)	19.62					
Bit Size (in)	6.250					
Logging Unit Number	3022					
Logging Unit Location	Ft. Morgan, CO					
Recorded By	Tim Hoffman					
Witnessed By	Jeremy Fisher					
Service Order Number	CCN1-00035					

Remarks and Equipment Summary

Run1d: Toolstring				Run1d: Remarks
Equip name LEH-QT LEH-QT	Length 49.57	MP name	Offset	This is the first run in hole
				Toolstring run as per tool sketch
				Toolstring run without bowspring as per client request
DTC-H:8906 ECH-KC:9984 DTC-H:8906	46.65	CTEM HV	45.75 0.00	Matrix: Limestone (2.71 g/cc)
		ToolStatus TelStatus	43.65 43.65	Rig: Excel Rig 2
A H-184	43.65			Crew: Jay Musgrave, Derrick Hunter
GPIT-F GPIH-B GPIC-F DHRU-F	41.65	GPIT-F Incl inometer	40.23	
HGNS-B:1918 HGNH:2973 NPV-N NSR-F:5069 HACCZ-B:727 HGNS-B:1918 HMCA-B	37.65	GPIT Temperature GR	0.00 37.62 36.91	
		CNL Porosity HGNS HMCA Accelerometer	30.57 28.24 28.24 0.00	
HDRS-B:1716 ECH-MEB HRCC-B:860 HRMS-B:1716 GSR-J:5094 Long Spacing HRGD-B:1748 Short Spacing GPV-Q Backscatter	28.24	HRCC	24.24	
		MCFL Caliper TLD Density	18.81 18.33 17.94	
A IT-H:398 AHIS:398 AHRM	16.00			
		Induction Power Supply Temperature	7.91 7.91 7.91	



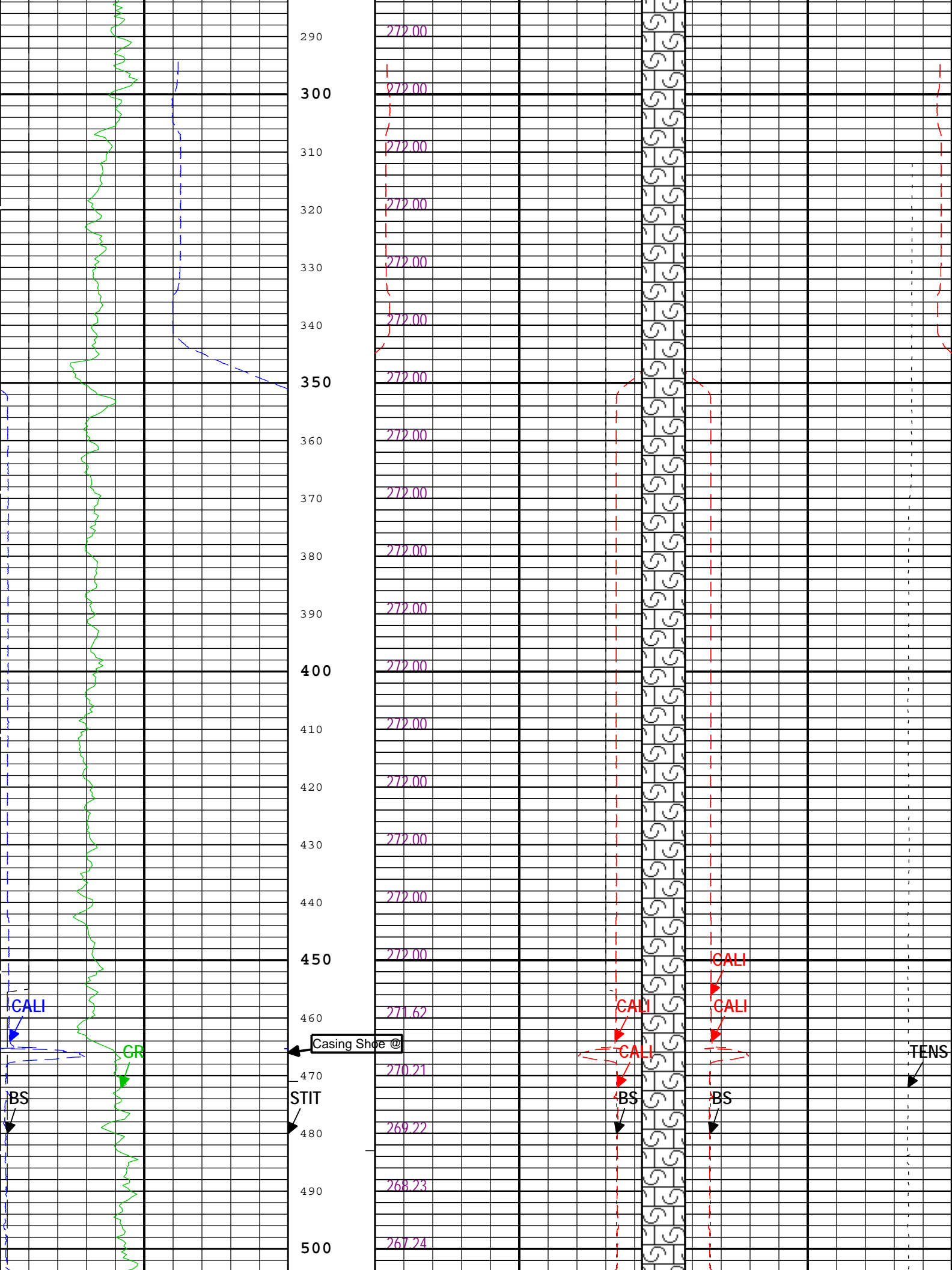
Depth Summary			
Depth Control Parameters	Run1d		
Conveyance Type	Wireline		
Stretch Correction (ft)	0.00		
Depth Remark Parameters	Run1d		
Depth Remark 1	All Schlumberger depth policies followed.		
Depth Remark 2	IDW used as primary depth reference. Z-chart used as secondary.		
Depth Measuring Device	Run1d		
Type	IDW-B		
Wheel Correction 1	1		
Wheel Correction 2	0		
Tension Device	Run1d		
Type	CMTD-B/A		
Calibration Points	0		
Logging Cable	Run1d		
Type	7-46NT-XS		
Logging Cable Length (ft)	24000.00		
Run1d			
5" Caliper			

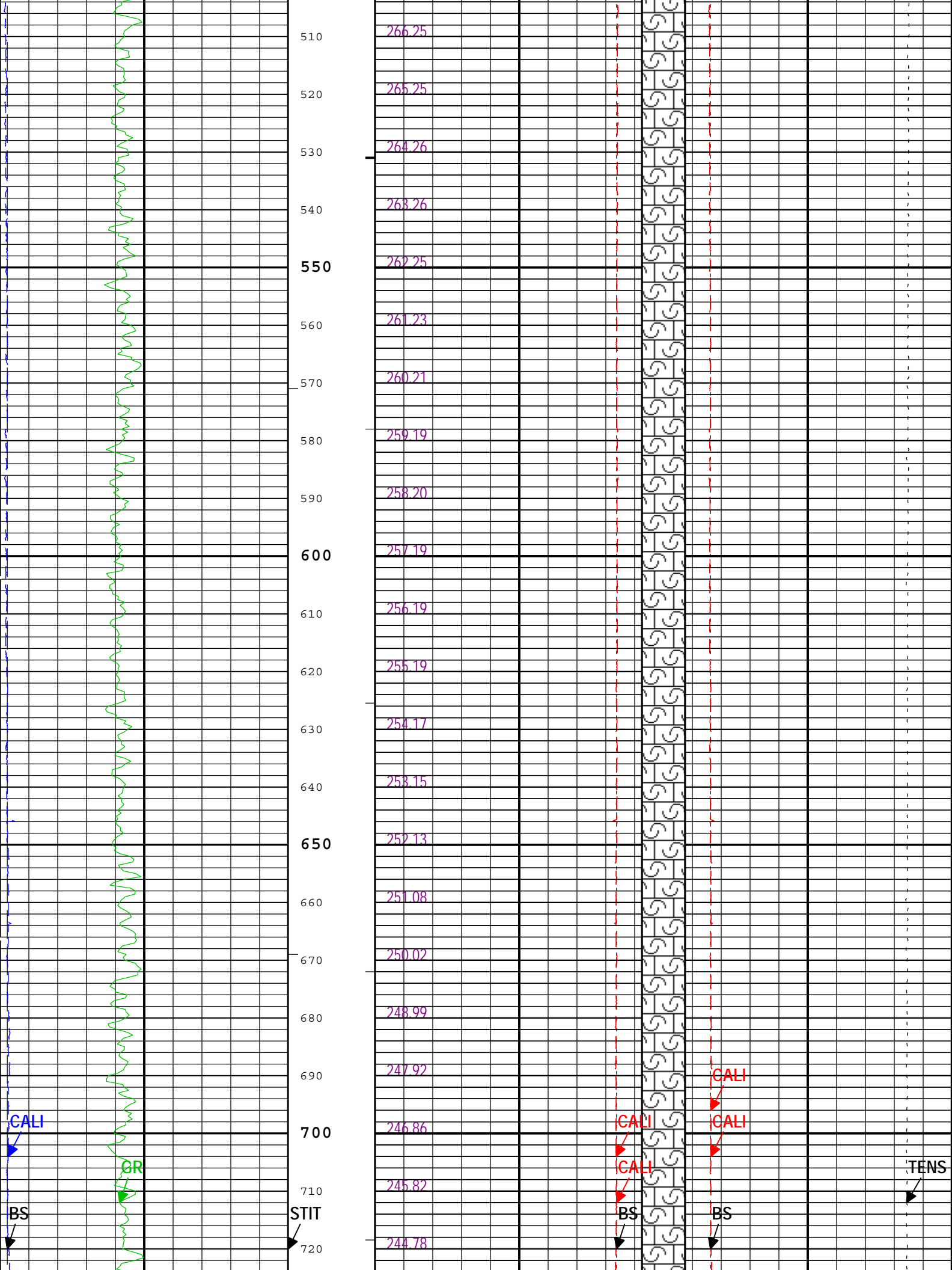
Integration Summary				
Output Channel(s)	Output Description	Input Parameter	Output Value	Unit
ICV	Integrated Cement Volume	GCSE_UP_PASS, FCD	271.94	ft3
IHV	Integrated Hole Volume	GCSE_UP_PASS	516.19	ft3

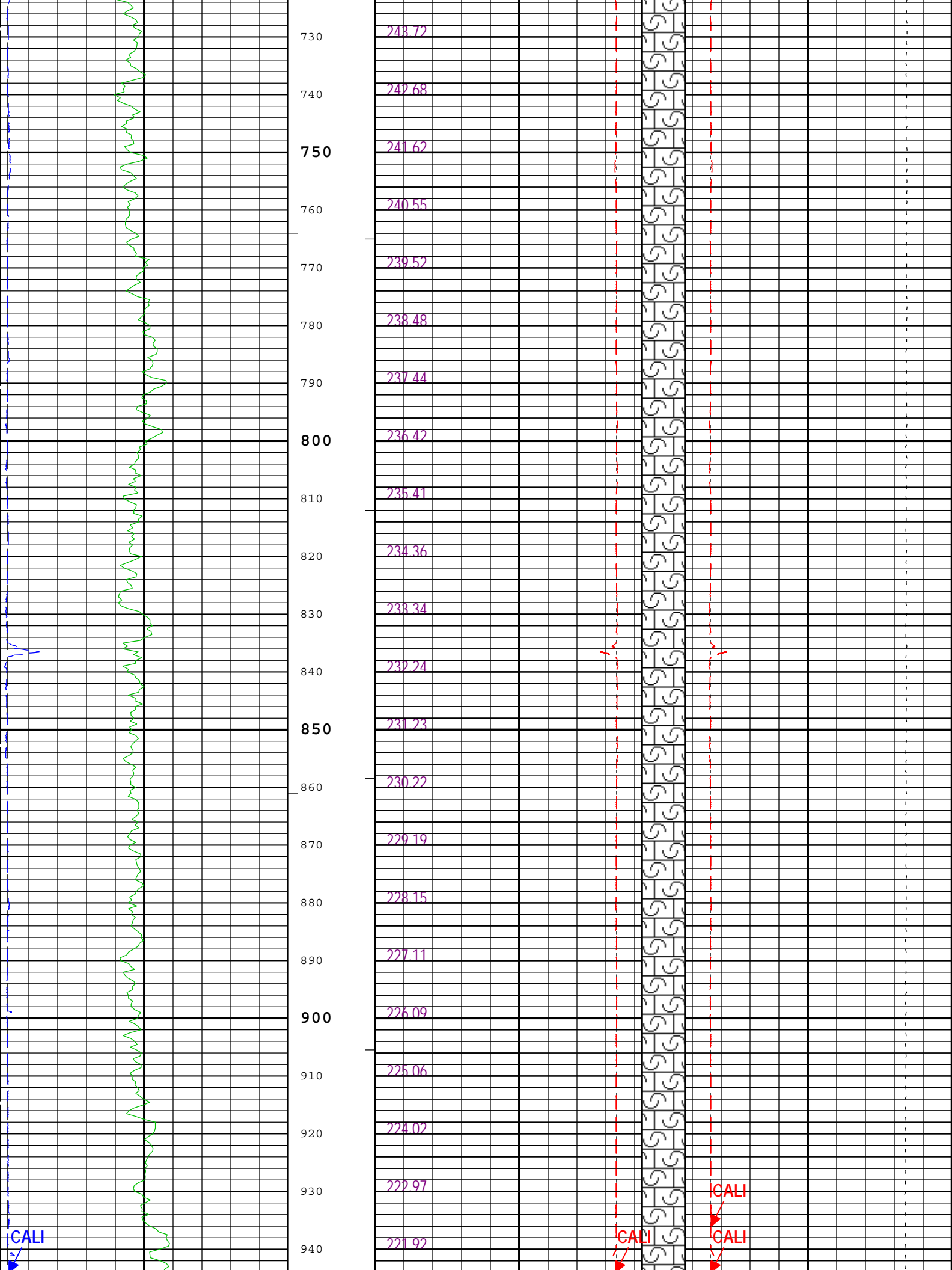
Software Version	
Acquisition System	Version
MaxWell	3.1.9755.0
Application Patch	SP-20130325-3.1.9755.1799
	EXP_APL-AIT-3.1.9755.1975
	EXP_APL-PPCEXT-3.1.9755.2022
	EXP_APL-MASTCustWF-3.1.9755.2031
	EXP_APL-MSCT-3.1.9755.1991

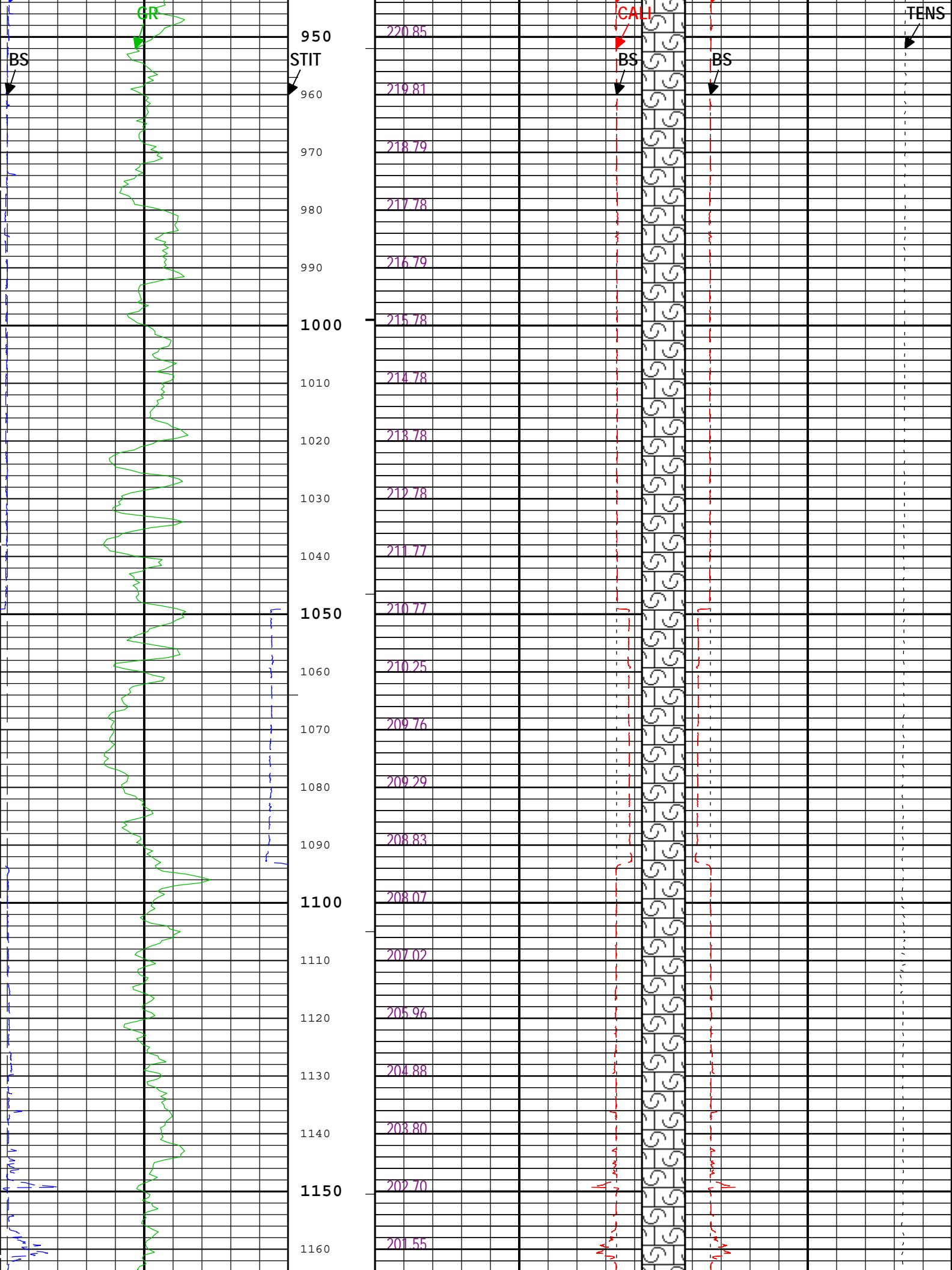
Computation	Description	Version
-------------	-------------	---------

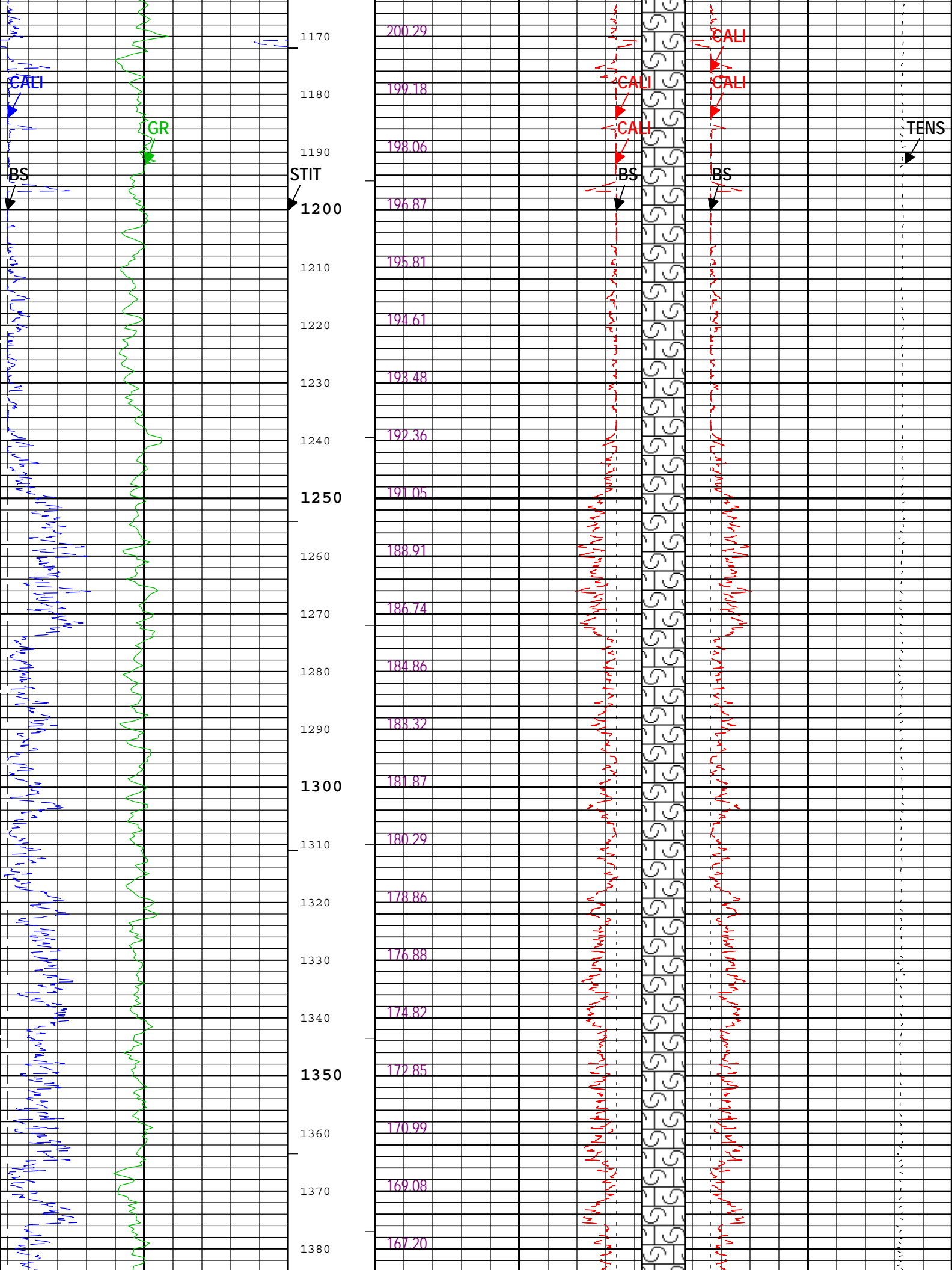
Borehole		Borehole Ensemble provides common Borehole Parameters and Channels						3.1.9755.1799	
DepthCorrection		DepthCorrection						3.1.9755.1799	
Tool Elements		Description				Software Version		Firmware Version	
HGNS-B		HILT Gamma-Ray and Neutron Sonde, 125 degC				3.1.9755.0		2.0	
HRCC-B		HILT High-Resolution Control Cartridge, 125 degC				3.1.9755.0		2.0	
Pass Summary									
Run Name	Pass Objective	Direction	Top	Bottom	Start	Stop	Depth Shift	Include Parallel Data	
Run1d	Log[3]:Up	Up	311.83 ft	2669.44 ft	17-Dec-2013 4:52:46 PM	17-Dec-2013 5:33:08 PM	0.00 ft		
All depths are referenced to toolstring zero									
Log		Run1d: Log[3]:Up							
Description: Format: Log (Noble East Caliper) Index Scale: 5 in per 100 ft Index Unit: ft Index Type: Measured Depth Creation Date: 17-Dec-2013 17:53:23									
Channel	Source	Sampling							
ICV	Borehole	6in							
BS	Borehole	6in							
CALI	HDRS-B:HRCC-B:HRCC-B	1in							
GR	HGNS-B:HGNS-B:HGNS-B	6in							
ICV	Borehole	6in							
IHV	Borehole	6in							
TENS	WLWorkflow	6in							
STIT	DepthCorrection	6in							
TIME_1900	WLWorkflow	0.1in							
IHV - Integrated Hole Volume every 100.00 (ft3)									
ICV - Integrated Cement Volume every 100.00 (ft3)									
TIME_1900 - Time Marked every 60.00 (s)									
IHV - Integrated Hole Volume every 10.00 (ft3)									
ICV - Integrated Cement Volume every 10.00 (ft3)									
<div><div><div>Integrated Cement Volume (ICV) ft3</div><div>Bit Size (BS) 3 in 23</div><div>Bit Size (BS) 23 in 3</div><div>Caliper (CALI) HDRS-B 23 in 3 3</div><div>Caliper (CALI) HDRS-B 23 in 3 3</div><div>Bit Size (BS) 6 in 16</div><div>Gamma Ray (GR) HGNS-B 0 gAPI 200</div><div>Caliper (CALI) HDRS-B 6 in 16</div></div><div><div>Stuck Tool Indicator, Total (STIT) 0 ft 50</div><div>Future Casing (Outer) Diameter (FCD) -17 in 23</div><div>Future Casing (Outer) Diameter (FCD) 23 in -17</div></div></div>									
<div><div><div>270</div><div>272.00</div></div><div><div>280</div><div>272.00</div></div></div>									

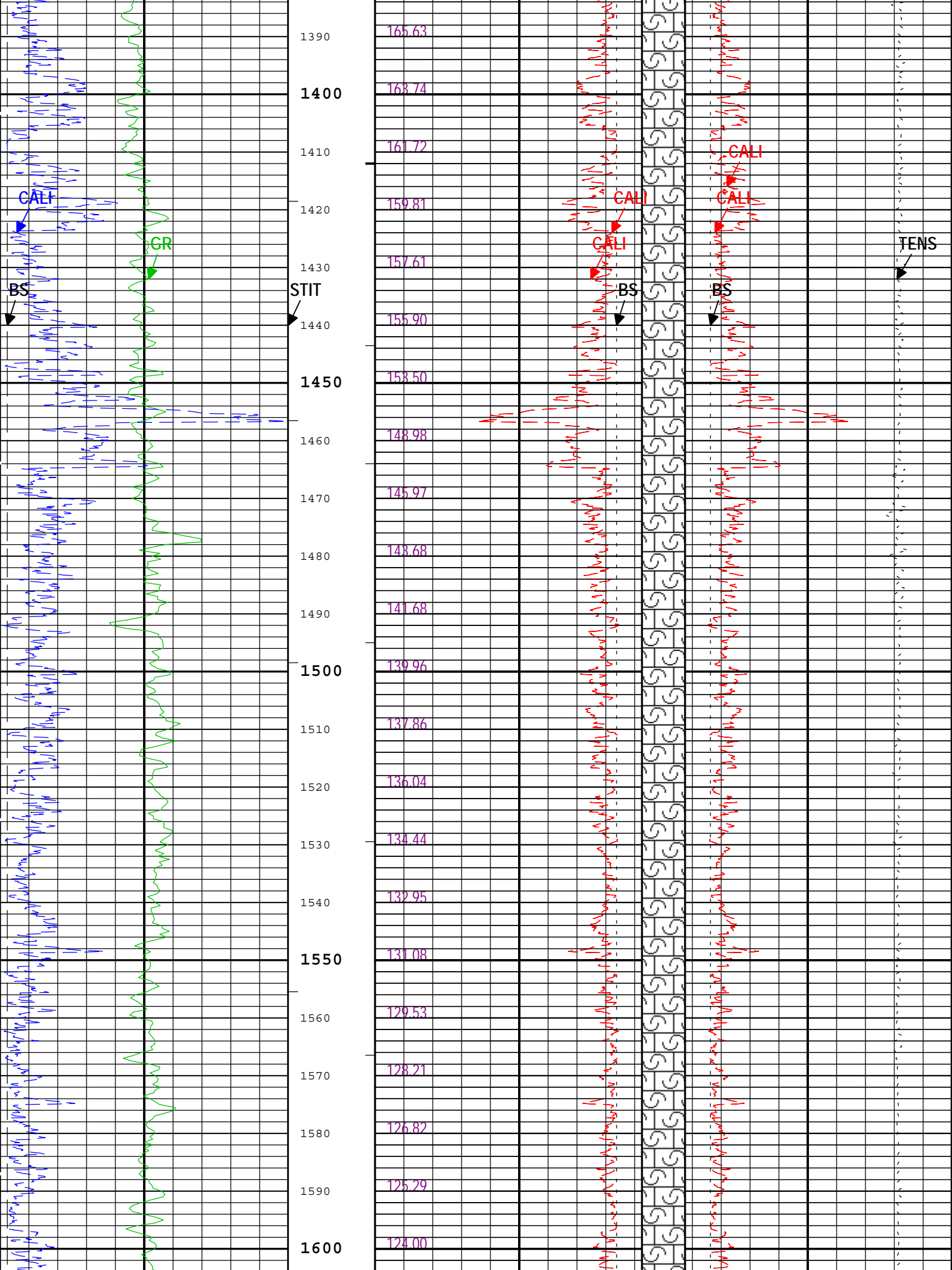


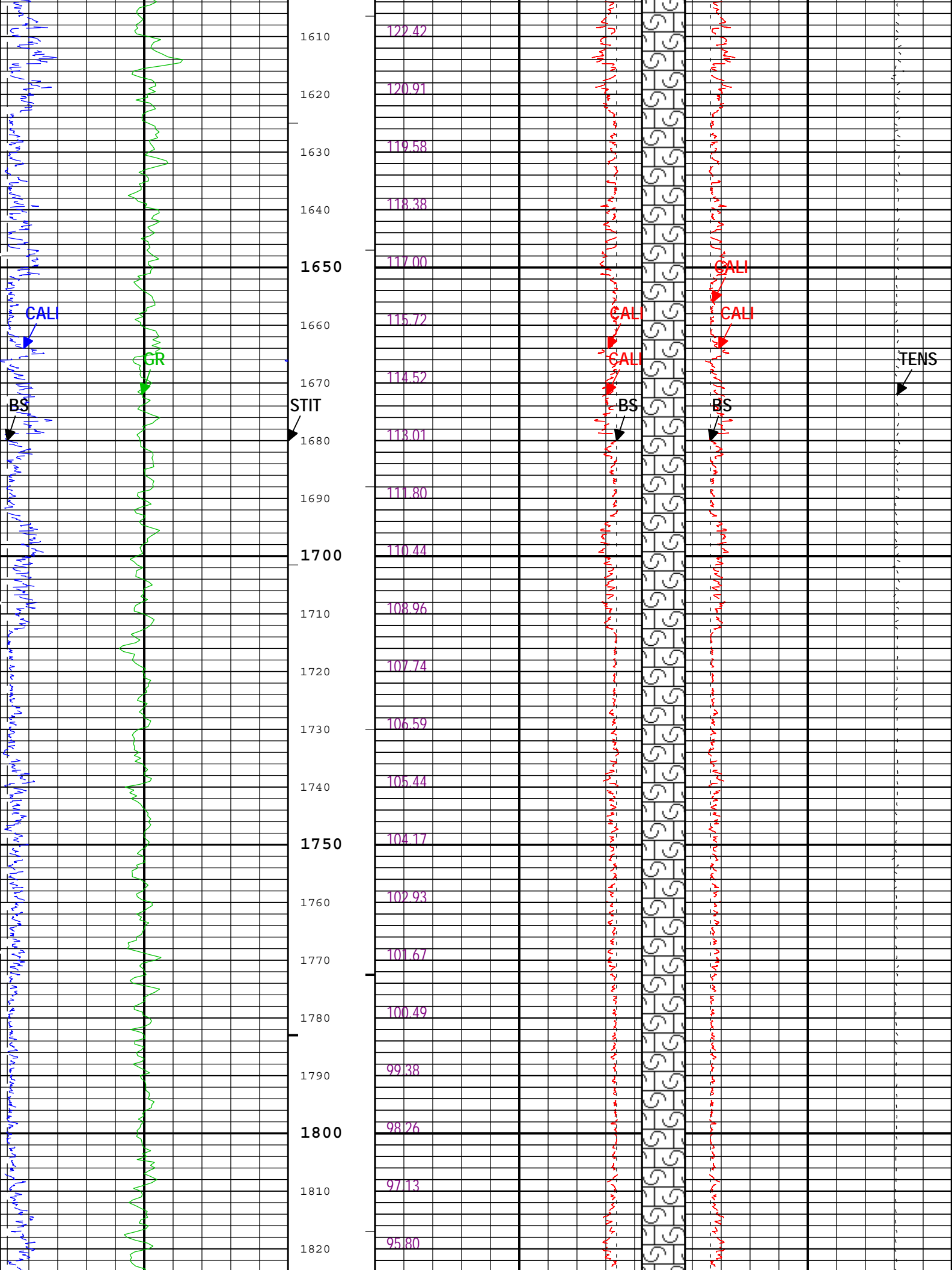


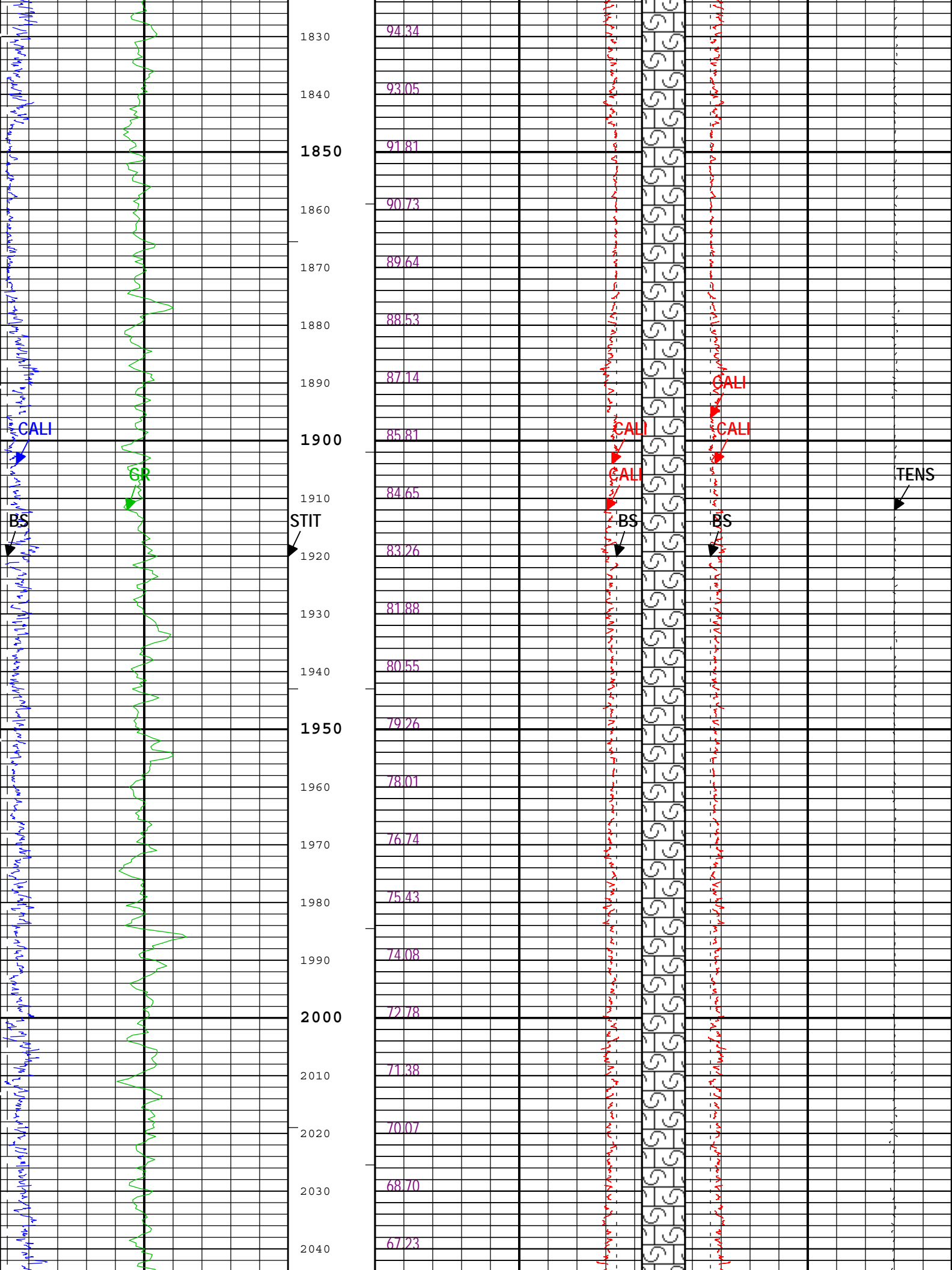


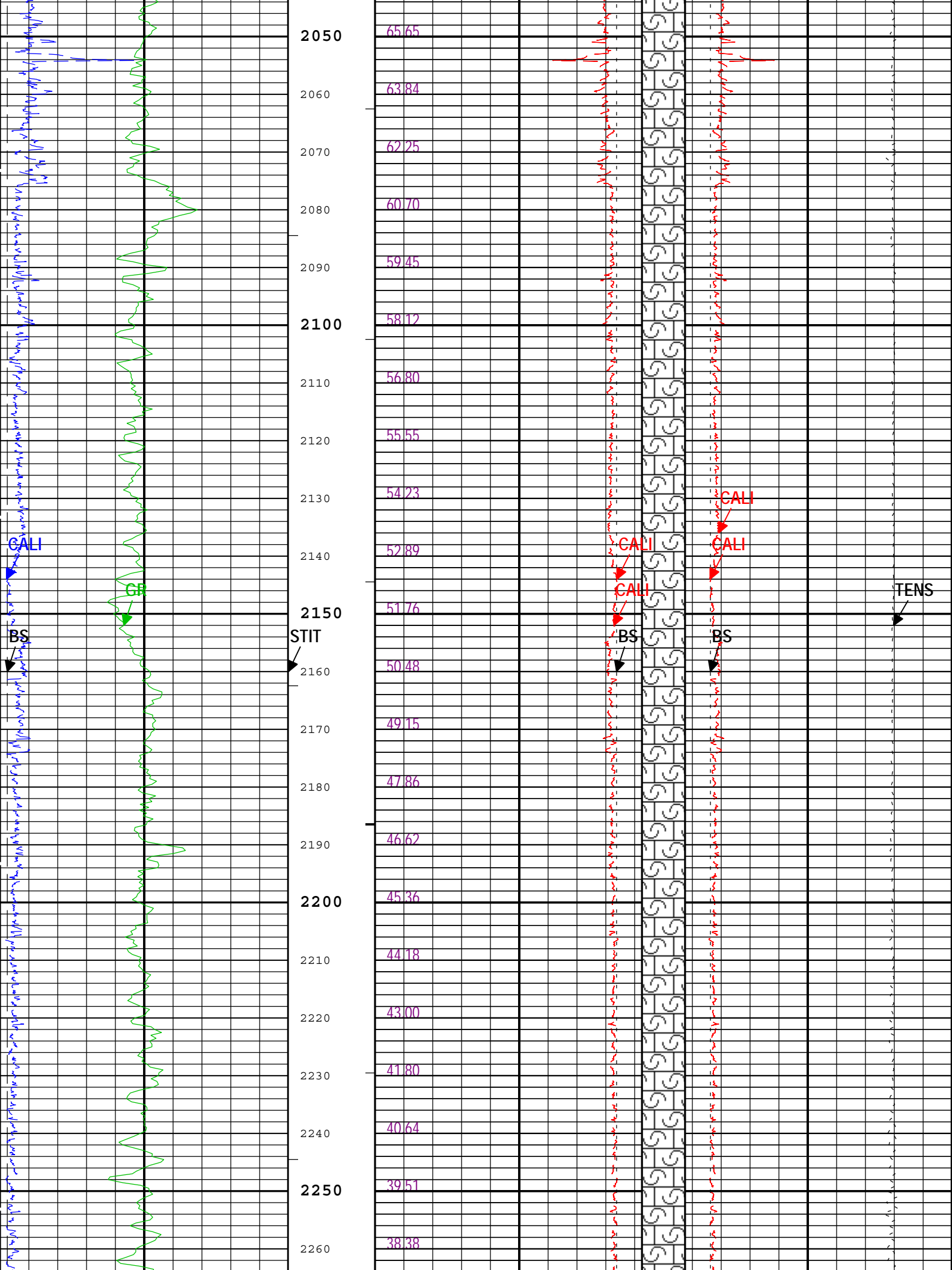


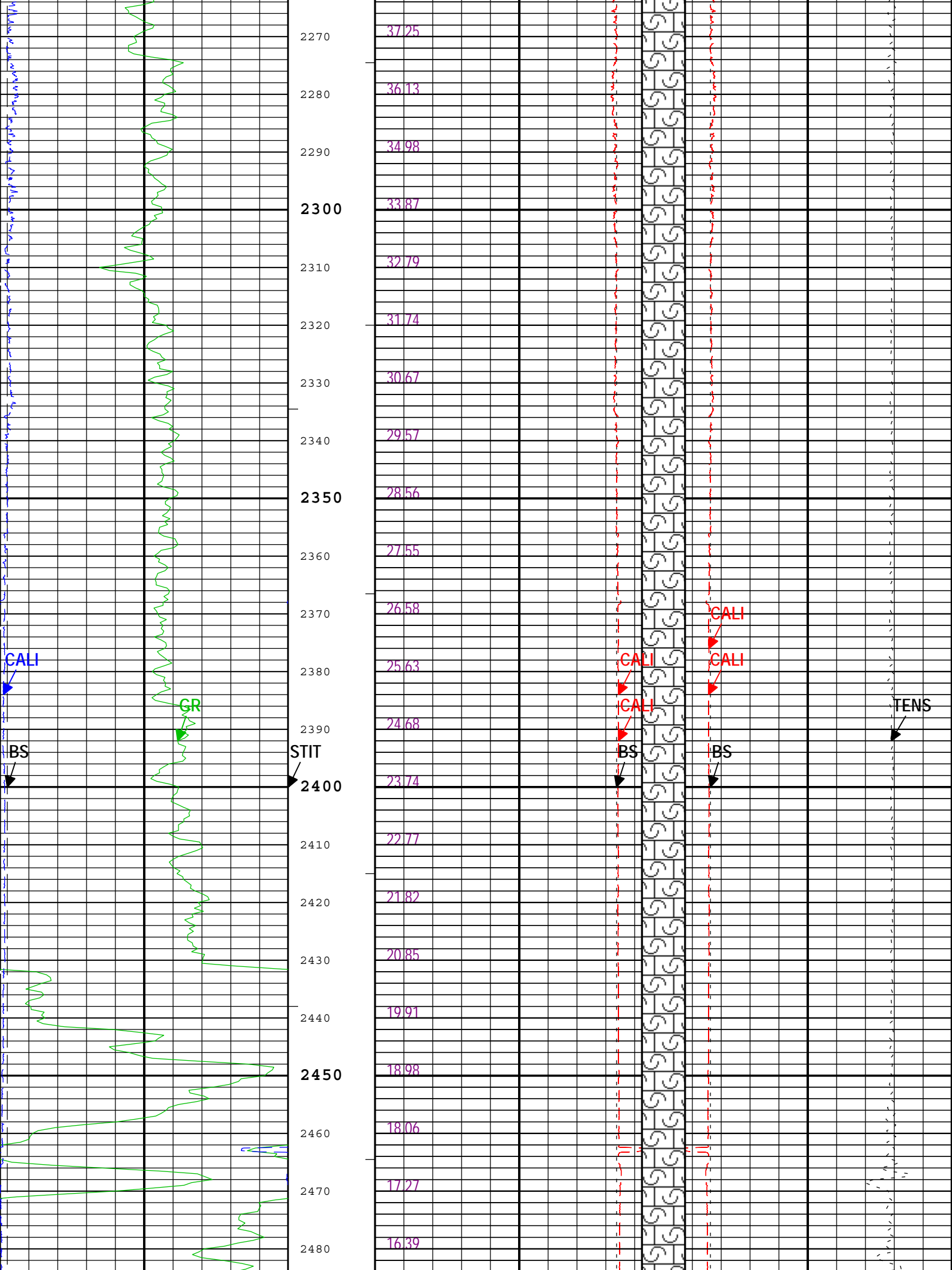


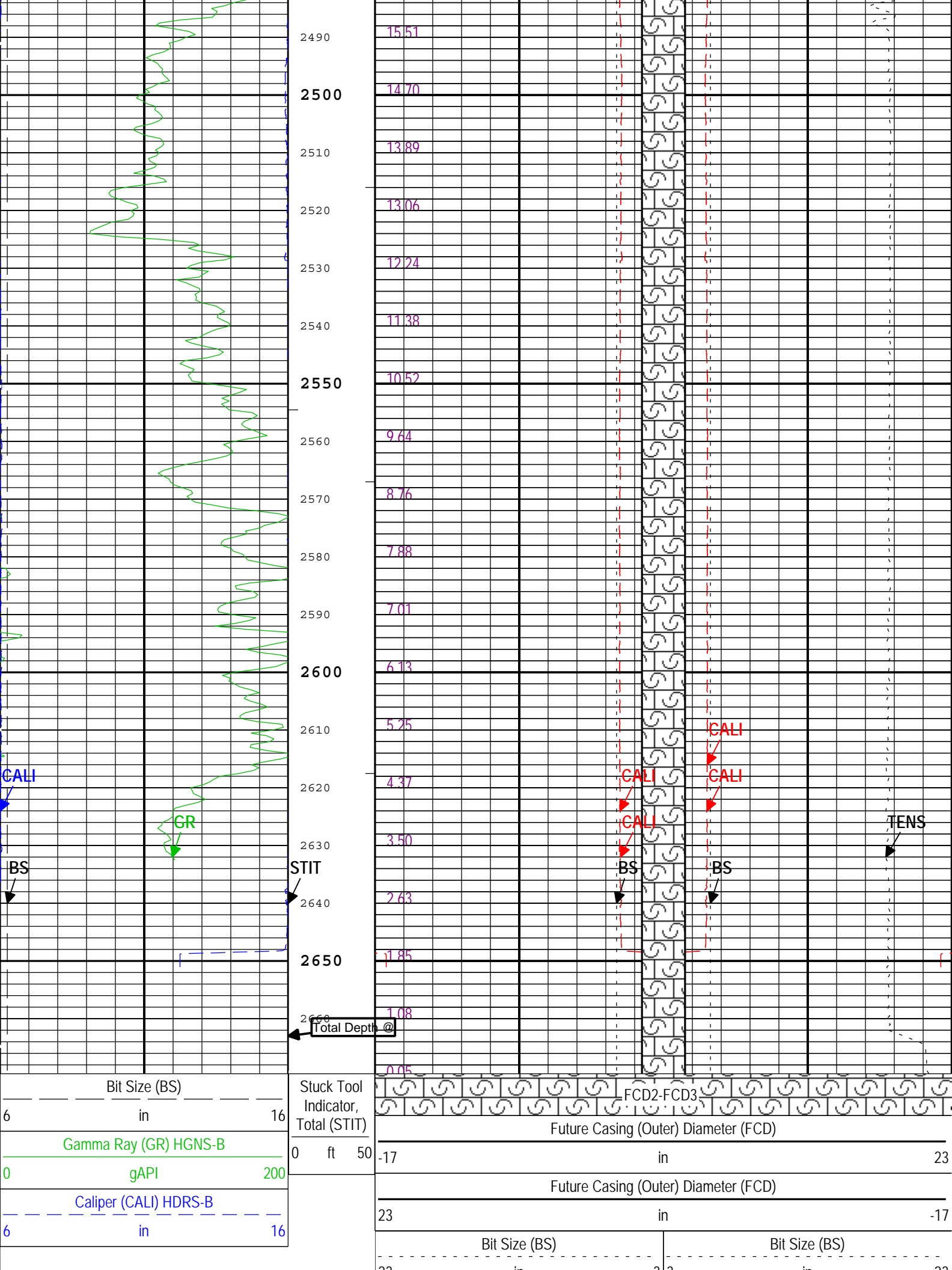












	23	in	3	3	23
	Caliper (CALI) HDRS-B			Cable Tension (TENS)	
	23	in	3	6000	lbf 0
	Caliper (CALI) HDRS-B			Caliper (CALI) HDRS-B	
	23	in	3	3	in 23
	Integrated Cement Volume (ICV) ft3			Caliper (CALI) HDRS-B	
				3	in 23
	└─ ICV - Integrated Cement Volume every 10.00 (ft3)				
	└─ IHV - Integrated Hole Volume every 10.00 (ft3)				
	TIME_1900 - Time Marked every 60.00 (s)				
	└─ ICV - Integrated Cement Volume every 100.00 (ft3)				
	└─ IHV - Integrated Hole Volume every 100.00 (ft3)				

Description: Format: Log (Noble East Caliper) Index Scale: 5 in per 100 ft Index Unit: ft Index Type: Measured Depth Creation Date: 17-Dec-2013 17:53:23

Channel Processing Parameters				
Parameter	Description	Tool	Value	Unit
BARI	Barite Mud Presence Flag	Borehole	No	
BHS	Borehole Status (Open or Cased Hole)	Borehole	Open	
BS	Bit Size	WLSESSION	Depth Zoned	in
CALI_SHIFT	CALI Supplementary Offset	HDRS-B	-0.18	in
CBLO	Casing Bottom (Logger)	WLSESSION	455	ft
CDEN	Cement Density	HGNS-B	2	g/cm3
CSODDRL	Casing Outer Diameter - Zoned along driller depths	WLSESSION	7	in
DFD	Drilling Fluid Density	Borehole	8.8	lbm/gal
FCD	Future Casing (Outer) Diameter	WLSESSION	4.5	in
GCSE_DOWN_PASS	Generalized Caliper Selection for WL Log Down Passes	Borehole	BS	
GCSE_UP_PASS	Generalized Caliper Selection for WL Log Up Passes	Borehole	CALI	
SOCO	Standoff Correction Option	HGNS-B	Yes	
TD	Total Measured Depth	Borehole	2663	ft

Depth Zone Parameters			
Parameter	Value	Start (ft)	Stop (ft)
BS	0	262.5	455
BS	6.25	455	2669.5
All depth are actual.			

Tool Control Parameters				
Parameter	Description	Tool	Value	Unit
MAX_LOG_SPEED	Toolstring Maximum Logging Speed	WLSESSION	3600	ft/h

Company:	Omimex Petroleum Inc	Schlumberger		
Well:	Bledsoe 10-3-5-45			
Field:	Ballyneal			
County:	Yuma			
State:	Colorado			

Platform Express
Caliper
Cement Volume