

BONANZA CREEK ENERGY OPERATING

Well Name: **State North Platte 11-14-26HNB**

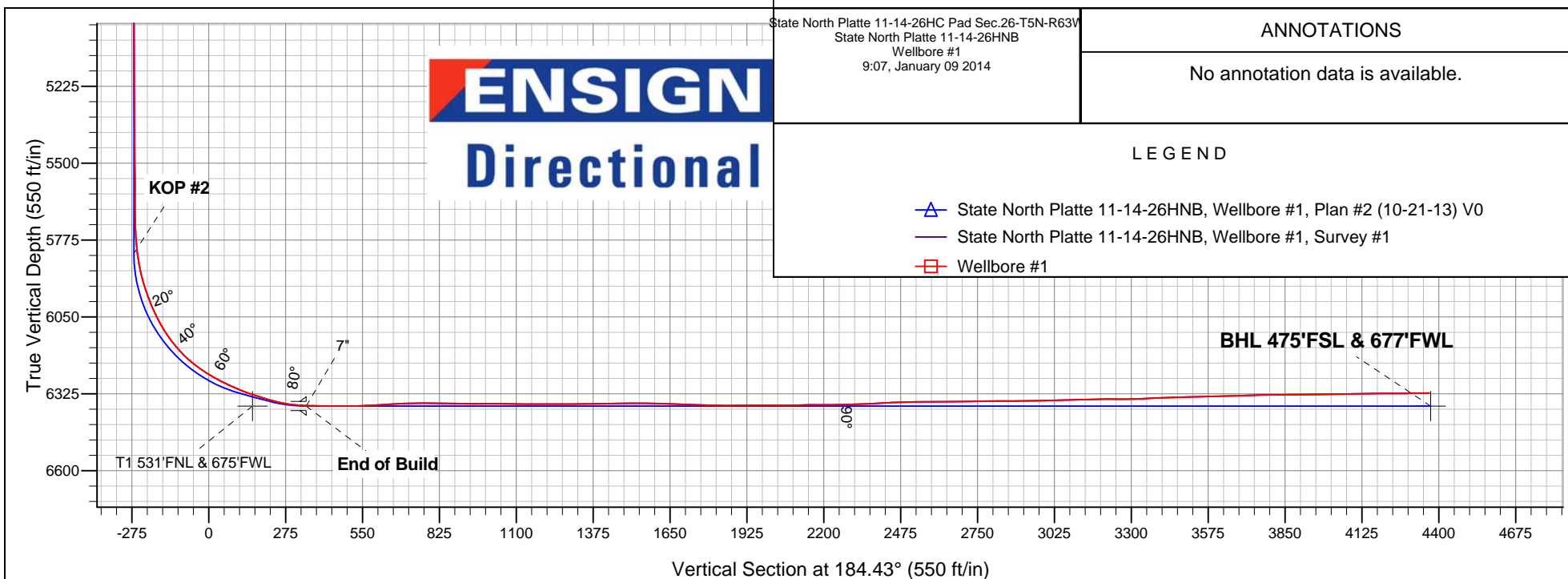
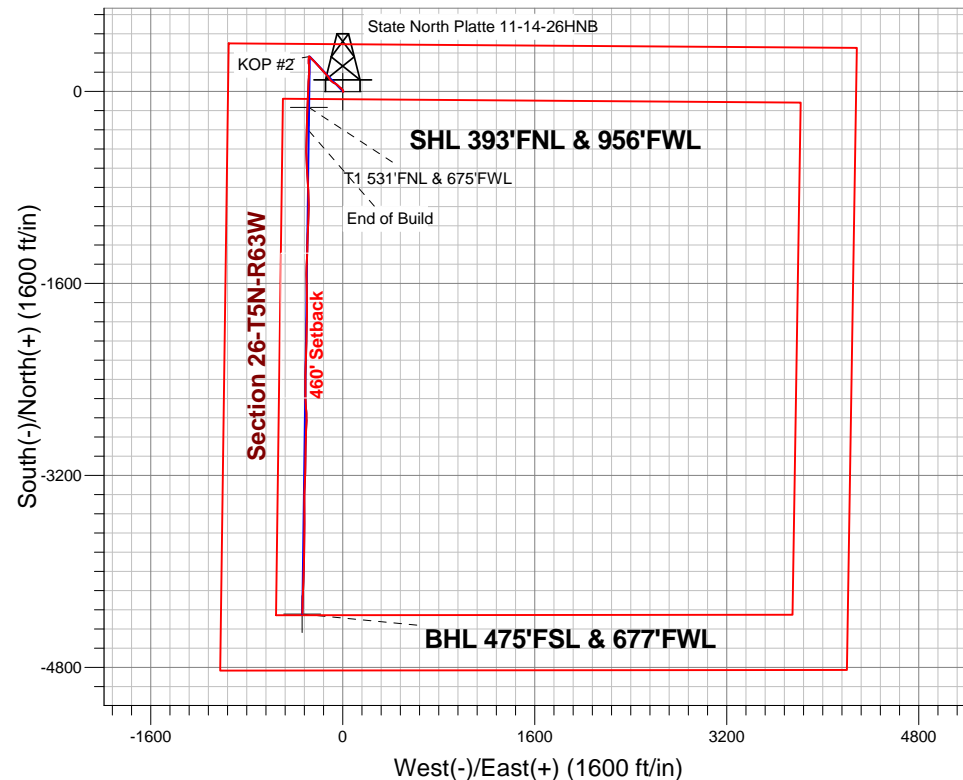
Surface Location: State North Platte 11-14-26HC Pad Sec.26-T5N-R63W
North American Datum 1983 , US State Plane 1983 , Colorado Northern Zone
Ground Elevation: 4566.0

+N/-S	+E/-W	Northing	Easting	Latitude	Longitude	Slot
0.0	0.0	1381836.45	3303950.08	40.376410	-104.409010	

Ensign 136 RKB - 12' WELL @ 4578.0ft (Ensign 136 RKB - 12')

FINAL SURVEY

Projected Bottom Hole Location
10765' MD 6322' TVD 4352' S & 335' W of SHL
91.2 degree Incl @ 181.5 degree AZM





BONANZA CREEK ENERGY OPERATING

SEC.26-T5N-R63W

State North Platte 11-14-26HC Pad Sec.26-T5N-R63W

State North Platte 11-14-26HNB

Wellbore #1

Design: Wellbore #1

Standard Survey Report

09 January, 2014

Company:	BONANZA CREEK ENERGY OPERATING	Local Co-ordinate Reference:	Well State North Platte 11-14-26HNB
Project:	SEC.26-T5N-R63W	TVD Reference:	WELL @ 4578.0ft (Ensign 136 RKB - 12')
Site:	State North Platte 11-14-26HC Pad Sec.26-T5N-R63W	MD Reference:	WELL @ 4578.0ft (Ensign 136 RKB - 12')
Well:	State North Platte 11-14-26HNB	North Reference:	True
Wellbore:	Wellbore #1	Survey Calculation Method:	Minimum Curvature
Design:	Wellbore #1	Database:	Landmark

Project	SEC.26-T5N-R63W, Weld County, CO		
Map System:	US State Plane 1983	System Datum:	Mean Sea Level
Geo Datum:	North American Datum 1983		Using Well Reference Point
Map Zone:	Colorado Northern Zone		Using geodetic scale factor

Site	State North Platte 11-14-26HC Pad Sec.26-T5N-R63W				
Site Position:		Northing:	1,381,792.75 ft	Latitude:	40.376290
From:	Lat/Long	Easting:	3,303,950.61 ft	Longitude:	-104.409010
Position Uncertainty:	0.0 ft	Slot Radius:	"	Grid Convergence:	0.70 °

Well	State North Platte 11-14-26HNB					
Well Position	+N/-S	0.0 ft	Northing:	1,381,836.45 ft	Latitude:	40.376410
	+E/-W	0.0 ft	Easting:	3,303,950.08 ft	Longitude:	-104.409010
Position Uncertainty		0.0 ft	Wellhead Elevation:	ft	Ground Level:	4,566.0 ft

Wellbore	Wellbore #1				
Magnetics	Model Name	Sample Date	Declination (°)	Dip Angle (°)	Field Strength (nT)
	IGRF2010	10/21/2013	8.35	67.01	52,911

Design	Wellbore #1				
Audit Notes:					
Version:	1.0	Phase:	ACTUAL	Tie On Depth:	0.0
Vertical Section:	Depth From (TVD) (ft)	+N/-S (ft)	+E/-W (ft)	Direction (°)	
	6,369.0	0.0	0.0	184.43	

Survey Program	Date	1/9/2014			
From (ft)	To (ft)	Survey (Wellbore)	Tool Name	Description	
48.0	10,765.0	Survey #1 (Wellbore #1)	MWD	MWD - Standard	

Survey										
Measured Depth (ft)	Inclination (°)	Azimuth (°)	Vertical Depth (ft)	+N/-S (ft)	+E/-W (ft)	Vertical Section (ft)	Dogleg Rate (°/100ft)	Build Rate (°/100ft)	Turn Rate (°/100ft)	
0.0	0.00	0.00	0.0	0.0	0.0	0.0	0.00	0.00	0.00	
1.0	0.01	130.20	1.0	0.0	0.0	0.0	0.83	0.83	0.00	
SHL 397°FNL & 956°FWL										
48.0	0.40	130.20	48.0	-0.1	0.1	0.1	0.83	0.83	0.00	
138.0	0.60	102.40	138.0	-0.4	0.8	0.3	0.34	0.22	-30.89	
228.0	0.70	115.20	228.0	-0.7	1.8	0.6	0.20	0.11	14.22	
357.0	0.40	116.50	357.0	-1.3	2.9	1.1	0.23	-0.23	1.01	
430.0	0.70	0.00	430.0	-1.0	3.1	0.7	1.30	0.41	-159.59	
508.0	0.50	102.20	508.0	-0.5	3.5	0.3	1.21	-0.26	131.03	
601.0	0.60	102.60	601.0	-0.7	4.3	0.4	0.11	0.11	0.43	
694.0	0.60	108.00	694.0	-1.0	5.3	0.6	0.06	0.00	5.81	
788.0	0.60	102.90	788.0	-1.3	6.2	0.8	0.06	0.00	-5.43	

Company:	BONANZA CREEK ENERGY OPERATING	Local Co-ordinate Reference:	Well State North Platte 11-14-26HNB
Project:	SEC.26-T5N-R63W	TVD Reference:	WELL @ 4578.0ft (Ensign 136 RKB - 12')
Site:	State North Platte 11-14-26HC Pad Sec.26-T5N-R63W	MD Reference:	WELL @ 4578.0ft (Ensign 136 RKB - 12')
Well:	State North Platte 11-14-26HNB	North Reference:	True
Wellbore:	Wellbore #1	Survey Calculation Method:	Minimum Curvature
Design:	Wellbore #1	Database:	Landmark

Survey									
Measured Depth (ft)	Inclination (°)	Azimuth (°)	Vertical Depth (ft)	+N/-S (ft)	+E/-W (ft)	Vertical Section (ft)	Dogleg Rate (°/100ft)	Build Rate (°/100ft)	Turn Rate (°/100ft)
881.0	0.60	111.40	881.0	-1.5	7.1	1.0	0.10	0.00	9.14
975.0	1.10	336.40	975.0	-0.9	7.2	0.3	1.68	0.53	-143.62
1,065.0	2.70	329.30	1,064.9	1.7	5.8	-2.2	1.79	1.78	-7.89
1,156.0	4.60	324.20	1,155.7	6.5	2.6	-6.7	2.12	2.09	-5.60
1,247.0	6.00	322.30	1,246.3	13.2	-2.5	-13.0	1.55	1.54	-2.09
1,338.0	6.30	311.10	1,336.8	20.3	-9.1	-19.5	1.36	0.33	-12.31
1,429.0	5.50	310.50	1,427.3	26.4	-16.2	-25.1	0.88	-0.88	-0.66
1,557.0	4.80	312.10	1,554.8	34.0	-24.8	-32.0	0.56	-0.55	1.25
1,683.0	6.00	317.90	1,680.2	42.4	-33.2	-39.7	1.05	0.95	4.60
1,811.0	5.50	309.60	1,807.6	51.3	-42.4	-47.9	0.76	-0.39	-6.48
1,937.0	6.30	301.90	1,932.9	58.8	-52.9	-54.5	0.89	0.63	-6.11
2,063.0	5.40	301.40	2,058.3	65.5	-63.8	-60.4	0.72	-0.71	-0.40
2,190.0	5.60	299.80	2,184.7	71.7	-74.3	-65.8	0.20	0.16	-1.26
2,318.0	5.90	306.70	2,312.0	78.7	-85.0	-72.0	0.59	0.23	5.39
2,445.0	6.60	311.60	2,438.3	87.5	-95.7	-79.8	0.69	0.55	3.86
2,572.0	8.80	328.60	2,564.2	100.6	-106.2	-92.1	2.48	1.73	13.39
2,700.0	9.10	325.80	2,690.6	117.4	-117.0	-108.0	0.41	0.23	-2.19
2,829.0	8.40	318.40	2,818.1	132.8	-129.0	-122.5	1.03	-0.54	-5.74
2,957.0	7.00	309.30	2,944.9	144.8	-141.2	-133.4	1.45	-1.09	-7.11
3,085.0	6.00	318.30	3,072.1	154.7	-151.7	-142.5	1.11	-0.78	7.03
3,214.0	5.30	319.80	3,200.5	164.3	-160.1	-151.5	0.55	-0.54	1.16
3,342.0	6.60	319.80	3,327.8	174.4	-168.6	-160.9	1.02	1.02	0.00
3,470.0	7.00	321.40	3,454.9	186.1	-178.2	-171.8	0.35	0.31	1.25
3,599.0	7.60	320.70	3,582.9	198.9	-188.5	-183.8	0.47	0.47	-0.54
3,727.0	7.60	317.90	3,709.7	211.7	-199.6	-195.7	0.29	0.00	-2.19
3,855.0	7.20	315.60	3,836.7	223.7	-210.9	-206.8	0.39	-0.31	-1.80
3,984.0	6.20	312.10	3,964.8	234.2	-221.7	-216.4	0.84	-0.78	-2.71
4,112.0	5.20	307.90	4,092.2	242.4	-231.4	-223.8	0.85	-0.78	-3.28
4,240.0	5.20	316.90	4,219.6	250.2	-239.9	-230.9	0.64	0.00	7.03
4,369.0	4.60	317.90	4,348.2	258.3	-247.4	-238.4	0.47	-0.47	0.78
4,497.0	5.10	320.00	4,475.7	266.4	-254.5	-246.0	0.41	0.39	1.64
4,626.0	4.70	309.10	4,604.2	274.2	-262.3	-253.1	0.78	-0.31	-8.45
4,754.0	4.70	314.20	4,731.8	281.1	-270.1	-259.5	0.33	0.00	3.98
4,882.0	2.90	316.50	4,859.5	287.1	-276.1	-265.0	1.41	-1.41	1.80
5,010.0	1.00	303.00	4,987.4	290.1	-279.3	-267.7	1.52	-1.48	-10.55
5,139.0	0.70	185.40	5,116.4	289.9	-280.3	-267.4	1.13	-0.23	-91.16
5,267.0	0.20	247.80	5,244.4	289.1	-280.6	-266.6	0.49	-0.39	48.75
5,395.0	0.40	160.10	5,372.4	288.6	-280.6	-266.1	0.34	0.16	-68.52
5,524.0	0.60	175.20	5,501.4	287.5	-280.4	-265.0	0.18	0.16	11.71
5,652.0	0.60	151.40	5,629.4	286.2	-280.0	-263.7	0.19	0.00	-18.59
5,738.0	0.90	167.10	5,715.4	285.2	-279.7	-262.7	0.42	0.35	18.26
5,780.0	2.70	191.00	5,757.4	283.9	-279.8	-261.4	4.55	4.29	56.90
5,823.0	6.00	191.30	5,800.3	280.7	-280.4	-258.2	7.67	7.67	0.70
5,866.0	9.10	187.30	5,842.9	275.1	-281.3	-252.6	7.31	7.21	-9.30
5,909.0	12.30	183.10	5,885.1	267.1	-282.0	-244.6	7.65	7.44	-9.77
5,952.0	16.10	181.30	5,926.8	256.6	-282.4	-234.0	8.90	8.84	-4.19
5,994.0	19.30	179.00	5,966.8	243.8	-282.4	-221.3	7.80	7.62	-5.48
6,037.0	22.90	175.50	6,006.9	228.4	-281.6	-206.0	8.87	8.37	-8.14
6,080.0	26.40	175.20	6,046.0	210.5	-280.1	-188.3	8.14	8.14	-0.70
6,123.0	30.20	178.50	6,083.8	190.2	-279.0	-168.1	9.55	8.84	7.67
6,166.0	34.60	181.00	6,120.1	167.1	-279.0	-145.1	10.69	10.23	5.81
6,208.0	39.70	182.90	6,153.6	141.8	-279.9	-119.8	12.45	12.14	4.52
6,251.0	45.10	184.00	6,185.4	112.9	-281.6	-90.8	12.68	12.56	2.56

Company:	BONANZA CREEK ENERGY OPERATING	Local Co-ordinate Reference:	Well State North Platte 11-14-26HNB
Project:	SEC.26-T5N-R63W	TVD Reference:	WELL @ 4578.0ft (Ensign 136 RKB - 12')
Site:	State North Platte 11-14-26HC Pad Sec.26-T5N-R63W	MD Reference:	WELL @ 4578.0ft (Ensign 136 RKB - 12')
Well:	State North Platte 11-14-26HNB	North Reference:	True
Wellbore:	Wellbore #1	Survey Calculation Method:	Minimum Curvature
Design:	Wellbore #1	Database:	Landmark

Survey									
Measured Depth (ft)	Inclination (°)	Azimuth (°)	Vertical Depth (ft)	+N/-S (ft)	+E/-W (ft)	Vertical Section (ft)	Dogleg Rate (°/100ft)	Build Rate (°/100ft)	Turn Rate (°/100ft)
6,294.0	50.60	184.00	6,214.2	81.1	-283.8	-58.9	12.79	12.79	0.00
6,337.0	55.60	183.40	6,240.0	46.8	-286.1	-24.6	11.68	11.63	-1.40
6,379.0	60.10	182.20	6,262.4	11.3	-287.8	11.0	10.98	10.71	-2.86
6,422.0	63.40	181.30	6,282.7	-26.6	-288.9	48.8	7.89	7.67	-2.09
6,465.0	66.00	181.70	6,301.1	-65.4	-290.0	87.6	6.10	6.05	0.93
6,508.0	69.30	181.90	6,317.4	-105.2	-291.2	127.3	7.69	7.67	0.47
6,550.0	72.10	182.00	6,331.3	-144.8	-292.6	166.9	6.67	6.67	0.24
6,551.4	72.13	182.01	6,331.7	-146.1	-292.6	168.3	1.91	1.86	0.47
T1 531'FNL & 675'FWL									
6,593.0	72.90	182.20	6,344.2	-185.8	-294.1	207.9	1.91	1.86	0.47
6,636.0	77.00	182.00	6,355.4	-227.3	-295.6	249.4	9.55	9.53	-0.47
6,678.0	82.40	181.90	6,362.9	-268.6	-297.0	290.7	12.86	12.86	-0.24
6,750.0	89.00	182.40	6,368.3	-340.3	-299.7	362.4	9.19	9.17	0.69
6,793.0	89.80	182.40	6,368.8	-383.2	-301.5	405.3	1.86	1.86	0.00
6,835.0	90.10	181.70	6,368.8	-425.2	-303.0	447.3	1.81	0.71	-1.67
6,878.0	89.70	180.40	6,368.9	-468.2	-303.8	490.2	3.16	-0.93	-3.02
6,920.0	91.10	178.90	6,368.6	-510.2	-303.5	532.1	4.89	3.33	-3.57
6,962.0	92.80	178.20	6,367.1	-552.1	-302.5	573.8	4.38	4.05	-1.67
7,005.0	93.60	175.70	6,364.7	-595.0	-300.2	616.4	6.10	1.86	-5.81
7,047.0	93.10	176.40	6,362.3	-636.8	-297.3	657.9	2.05	-1.19	1.67
7,089.0	92.30	176.20	6,360.3	-678.7	-294.6	699.4	1.96	-1.90	-0.48
7,132.0	91.10	176.40	6,359.0	-721.6	-291.8	742.0	2.83	-2.79	0.47
7,174.0	90.00	177.60	6,358.6	-763.5	-289.6	783.6	3.88	-2.62	2.86
7,216.0	89.10	176.90	6,359.0	-805.5	-287.6	825.3	2.71	-2.14	-1.67
7,259.0	88.50	178.00	6,359.9	-848.4	-285.7	867.9	2.91	-1.40	2.56
7,301.0	89.50	177.80	6,360.6	-890.4	-284.1	909.7	2.43	2.38	-0.48
7,344.0	90.00	179.60	6,360.8	-933.4	-283.2	952.5	4.34	1.16	4.19
7,386.0	90.70	181.70	6,360.5	-975.4	-283.6	994.4	5.27	1.67	5.00
7,429.0	90.00	181.30	6,360.3	-1,018.4	-284.8	1,037.3	1.87	-1.63	-0.93
7,472.0	88.20	181.70	6,360.9	-1,061.3	-285.9	1,080.2	4.29	-4.19	0.93
7,514.0	89.00	181.80	6,362.0	-1,103.3	-287.2	1,122.2	1.92	1.90	0.24
7,557.0	89.90	181.30	6,362.4	-1,146.3	-288.3	1,165.1	2.39	2.09	-1.16
7,600.0	89.30	182.70	6,362.7	-1,189.3	-289.8	1,208.1	3.54	-1.40	3.26
7,643.0	90.70	182.40	6,362.7	-1,232.2	-291.7	1,251.1	3.33	3.26	-0.70
7,686.0	91.60	182.20	6,361.8	-1,275.2	-293.5	1,294.0	2.14	2.09	-0.47
7,728.0	90.50	181.70	6,361.0	-1,317.1	-294.9	1,336.0	2.88	-2.62	-1.19
7,771.0	90.10	181.70	6,360.8	-1,360.1	-296.2	1,378.9	0.93	-0.93	0.00
7,814.0	90.70	182.40	6,360.5	-1,403.1	-297.7	1,421.9	2.14	1.40	1.63
7,856.0	91.20	182.40	6,359.8	-1,445.1	-299.5	1,463.9	1.19	1.19	0.00
7,899.0	90.40	181.50	6,359.2	-1,488.0	-300.9	1,506.8	2.80	-1.86	-2.09
7,942.0	89.30	178.90	6,359.3	-1,531.0	-301.1	1,549.7	6.57	-2.56	-6.05
7,985.0	89.20	178.30	6,359.9	-1,574.0	-300.0	1,592.5	1.41	-0.23	-1.40
8,028.0	88.60	179.40	6,360.7	-1,617.0	-299.2	1,635.2	2.91	-1.40	2.56
8,070.0	87.50	179.20	6,362.2	-1,659.0	-298.7	1,677.1	2.66	-2.62	-0.48
8,113.0	87.80	179.00	6,363.9	-1,701.9	-298.0	1,719.8	0.84	0.70	-0.47
8,156.0	88.00	179.00	6,365.5	-1,744.9	-297.2	1,762.6	0.47	0.47	0.00
8,199.0	88.50	179.20	6,366.8	-1,787.9	-296.6	1,805.4	1.25	1.16	0.47
8,242.0	90.00	180.10	6,367.4	-1,830.8	-296.3	1,848.3	4.07	3.49	2.09
8,284.0	90.90	181.50	6,367.0	-1,872.8	-296.9	1,890.2	3.96	2.14	3.33
8,327.0	90.40	181.10	6,366.6	-1,915.8	-297.9	1,933.1	1.49	-1.16	-0.93
8,370.0	91.20	181.10	6,366.0	-1,958.8	-298.7	1,976.0	1.86	1.86	0.00
8,413.0	89.60	181.50	6,365.7	-2,001.8	-299.7	2,019.0	3.84	-3.72	0.93
8,455.0	88.90	181.10	6,366.2	-2,043.8	-300.6	2,060.9	1.92	-1.67	-0.95

Company:	BONANZA CREEK ENERGY OPERATING	Local Co-ordinate Reference:	Well State North Platte 11-14-26HNB
Project:	SEC.26-T5N-R63W	TVD Reference:	WELL @ 4578.0ft (Ensign 136 RKB - 12')
Site:	State North Platte 11-14-26HC Pad Sec.26-T5N-R63W	MD Reference:	WELL @ 4578.0ft (Ensign 136 RKB - 12')
Well:	State North Platte 11-14-26HNB	North Reference:	True
Wellbore:	Wellbore #1	Survey Calculation Method:	Minimum Curvature
Design:	Wellbore #1	Database:	Landmark

Survey									
Measured Depth (ft)	Inclination (°)	Azimuth (°)	Vertical Depth (ft)	+N/-S (ft)	+E/-W (ft)	Vertical Section (ft)	Dogleg Rate (°/100ft)	Build Rate (°/100ft)	Turn Rate (°/100ft)
8,498.0	91.40	181.50	6,366.1	-2,086.8	-301.6	2,103.8	5.89	5.81	0.93
8,541.0	91.40	182.00	6,365.0	-2,129.7	-302.9	2,146.8	1.16	0.00	1.16
8,584.0	89.90	181.80	6,364.6	-2,172.7	-304.3	2,189.7	3.52	-3.49	-0.47
8,626.0	90.00	181.50	6,364.6	-2,214.7	-305.5	2,231.7	0.75	0.24	-0.71
8,669.0	91.60	182.20	6,364.0	-2,257.7	-306.9	2,274.6	4.06	3.72	1.63
8,712.0	92.30	182.00	6,362.5	-2,300.6	-308.5	2,317.6	1.69	1.63	-0.47
8,755.0	92.50	181.70	6,360.7	-2,343.5	-309.9	2,360.5	0.84	0.47	-0.70
8,798.0	93.20	181.10	6,358.6	-2,386.5	-310.9	2,403.4	2.14	1.63	-1.40
8,840.0	92.70	179.90	6,356.4	-2,428.4	-311.3	2,445.2	3.09	-1.19	-2.86
8,883.0	91.00	179.70	6,355.0	-2,471.4	-311.1	2,488.0	3.98	-3.95	-0.47
8,926.0	90.30	178.50	6,354.5	-2,514.4	-310.5	2,530.9	3.23	-1.63	-2.79
8,969.0	90.90	177.60	6,354.1	-2,557.4	-309.0	2,573.6	2.52	1.40	-2.09
9,011.0	90.20	176.70	6,353.7	-2,599.3	-306.9	2,615.2	2.71	-1.67	-2.14
9,054.0	91.20	176.40	6,353.2	-2,642.2	-304.3	2,657.8	2.43	2.33	-0.70
9,097.0	90.70	178.00	6,352.5	-2,685.2	-302.2	2,700.5	3.90	-1.16	3.72
9,140.0	90.40	179.00	6,352.0	-2,728.2	-301.1	2,743.3	2.43	-0.70	2.33
9,183.0	90.70	181.80	6,351.6	-2,771.1	-301.4	2,786.1	6.55	0.70	6.51
9,225.0	90.70	183.80	6,351.1	-2,813.1	-303.5	2,828.1	4.76	0.00	4.76
9,268.0	90.40	182.50	6,350.7	-2,856.0	-305.8	2,871.1	3.10	-0.70	-3.02
9,311.0	90.70	181.80	6,350.3	-2,899.0	-307.4	2,914.1	1.77	0.70	-1.63
9,354.0	90.10	180.60	6,350.0	-2,942.0	-308.3	2,957.0	3.12	-1.40	-2.79
9,396.0	90.70	181.00	6,349.7	-2,984.0	-308.9	2,998.9	1.72	1.43	0.95
9,439.0	91.30	180.60	6,348.9	-3,027.0	-309.5	3,041.8	1.68	1.40	-0.93
9,482.0	92.30	180.60	6,347.6	-3,069.9	-310.0	3,084.7	2.33	2.33	0.00
9,525.0	92.50	181.10	6,345.8	-3,112.9	-310.6	3,127.6	1.25	0.47	1.16
9,567.0	91.80	181.50	6,344.2	-3,154.9	-311.6	3,169.5	1.92	-1.67	0.95
9,610.0	89.30	182.00	6,343.8	-3,197.8	-312.9	3,212.4	5.93	-5.81	1.16
9,653.0	89.40	182.20	6,344.3	-3,240.8	-314.5	3,255.4	0.52	0.23	0.47
9,696.0	91.30	182.40	6,344.0	-3,283.8	-316.2	3,298.4	4.44	4.42	0.47
9,739.0	91.80	181.80	6,342.9	-3,326.7	-317.8	3,341.3	1.82	1.16	-1.40
9,782.0	92.00	181.00	6,341.4	-3,369.7	-318.8	3,384.2	1.92	0.47	-1.86
9,824.0	92.90	180.30	6,339.6	-3,411.6	-319.3	3,426.1	2.71	2.14	-1.67
9,867.0	92.90	179.70	6,337.5	-3,454.6	-319.3	3,468.9	1.39	0.00	-1.40
9,910.0	91.20	179.60	6,335.9	-3,497.5	-319.0	3,511.7	3.96	-3.95	-0.23
9,953.0	90.70	179.60	6,335.2	-3,540.5	-318.7	3,554.6	1.16	-1.16	0.00
9,995.0	91.00	179.90	6,334.6	-3,582.5	-318.5	3,596.4	1.01	0.71	0.71
10,038.0	91.10	181.00	6,333.8	-3,625.5	-318.9	3,639.3	2.57	0.23	2.56
10,080.0	92.60	180.60	6,332.5	-3,667.5	-319.5	3,681.2	3.70	3.57	-0.95
10,123.0	91.80	180.30	6,330.8	-3,710.5	-319.8	3,724.1	1.99	-1.86	-0.70
10,166.0	91.00	180.80	6,329.8	-3,753.5	-320.2	3,767.0	2.19	-1.86	1.16
10,209.0	90.80	180.30	6,329.1	-3,796.4	-320.6	3,809.9	1.25	-0.47	-1.16
10,252.0	90.10	180.10	6,328.7	-3,839.4	-320.8	3,852.7	1.69	-1.63	-0.47
10,294.0	90.50	180.80	6,328.5	-3,881.4	-321.1	3,894.6	1.92	0.95	1.67
10,337.0	90.80	180.80	6,328.0	-3,924.4	-321.7	3,937.6	0.70	0.70	0.00
10,380.0	91.20	181.50	6,327.3	-3,967.4	-322.6	3,980.5	1.87	0.93	1.63
10,423.0	91.10	182.40	6,326.4	-4,010.4	-324.0	4,023.4	2.11	-0.23	2.09
10,465.0	91.10	182.20	6,325.6	-4,052.3	-325.7	4,065.4	0.48	0.00	-0.48
10,508.0	91.10	182.20	6,324.8	-4,095.3	-327.4	4,108.4	0.00	0.00	0.00
10,551.0	89.90	182.40	6,324.4	-4,138.3	-329.1	4,151.3	2.83	-2.79	0.47
10,593.0	90.70	182.00	6,324.2	-4,180.2	-330.7	4,193.3	2.13	1.90	-0.95
10,636.0	90.00	181.30	6,323.9	-4,223.2	-331.9	4,236.2	2.30	-1.63	-1.63
10,679.0	90.20	181.70	6,323.9	-4,266.2	-333.1	4,279.2	1.04	0.47	0.93
10,710.0	91.20	181.50	6,323.5	-4,297.2	-333.9	4,310.1	3.29	3.23	-0.65

Company:	BONANZA CREEK ENERGY OPERATING	Local Co-ordinate Reference:	Well State North Platte 11-14-26HNB
Project:	SEC.26-T5N-R63W	TVD Reference:	WELL @ 4578.0ft (Ensign 136 RKB - 12')
Site:	State North Platte 11-14-26HC Pad Sec.26-T5N-R63W	MD Reference:	WELL @ 4578.0ft (Ensign 136 RKB - 12')
Well:	State North Platte 11-14-26HNB	North Reference:	True
Wellbore:	Wellbore #1	Survey Calculation Method:	Minimum Curvature
Design:	Wellbore #1	Database:	Landmark

Survey									
Measured Depth (ft)	Inclination (°)	Azimuth (°)	Vertical Depth (ft)	+N/-S (ft)	+E/-W (ft)	Vertical Section (ft)	Dogleg Rate (°/100ft)	Build Rate (°/100ft)	Turn Rate (°/100ft)
10,765.0	91.20	181.50	6,322.3	-4,352.2	-335.4	4,365.1	0.00	0.00	0.00
BHL 470'FSL & 675'FWL									

Checked By: _____	Approved By: _____	Date: _____
-------------------	--------------------	-------------