

Synergy Resources

Well Name: **SRC Union 12-5CHZ**

Surface Location: SRC Union Pad Sec.5-T2N-R68W
North American Datum 1983 , US State Plane 1983 , Colorado Northern Zone

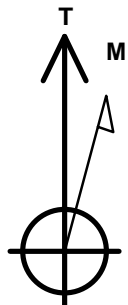
Ground Elevation: 4965.0

+N/-S	+E/-W	Northing	Easting	Latitude	Longitude	Slot
0.0	0.0	1305205.95	3129982.22	40.170250	-105.034869	

Ensign 131 RKB - 13.5' WELL @ 4978.5ft (Ensign 131 RKB - 13.5')

WELLBORE TARGET DETAILS

Name	TVD	+N/-S	+E/-W	Shape
SHL 1648'FNL & 443'FWL	1.0	0.0	0.0	Point
BHL 1902'FNL & 460'FEL	7100.0	-222.2	4422.3	Point



Azimuths to True North
Magnetic North: 8.64°

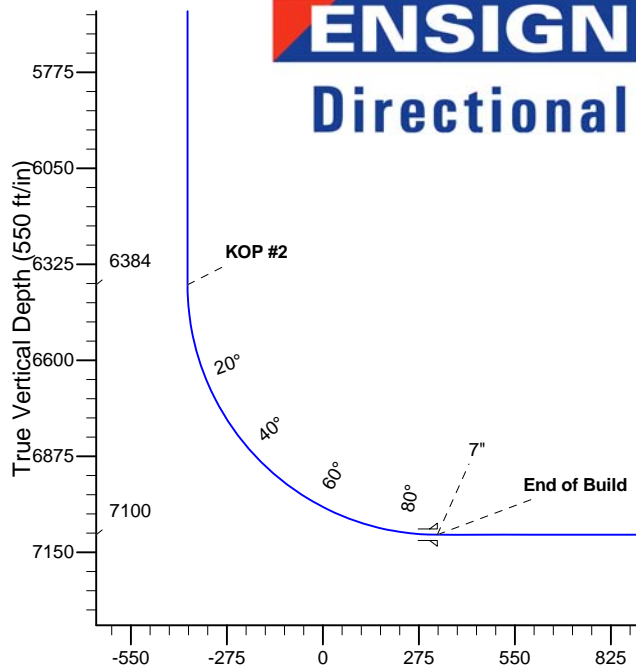
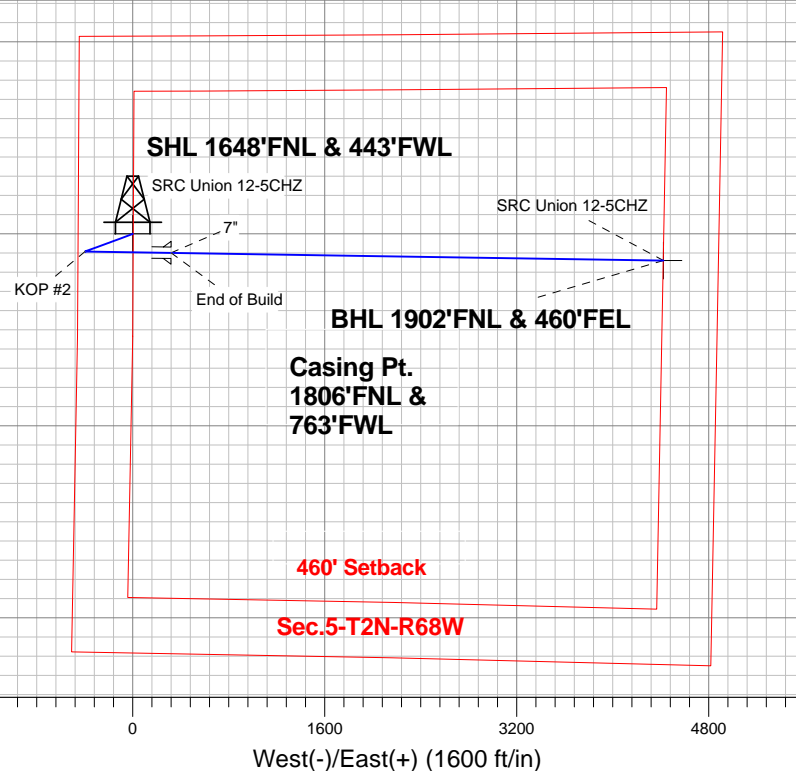
Magnetic Field
Strength: 52712.0snT
Dip Angle: 66.73°
Date: 1/2/2014
Model: IGRF2010

SRC Union Pad Sec.5-T2N-R68W
SRC Union 12-5CHZ
Plan #3 (1-2-14)
11:38, January 03 2014

ANNOTATIONS

TVD	MD	Annotation
1500.0	1500.0	KOP #1
6383.8	6411.4	KOP #2
7100.0	7536.5	End of Build

South(-)/North(+) (1600 ft/in)



ENSIGN
Directional

SECTION DETAILS

Sec	MD	Inc	Azi	TVD	+N/-S	+E/-W	DLeg	TFace	VSec	Target
1	0.0	0.00	0.00	0.0	0.0	0.0	0.00	0.00	0.0	
2	1500.0	0.00	0.00	1500.0	0.0	0.0	0.00	0.00	0.0	
3	2302.2	8.02	249.63	2299.5	-19.5	-52.6	1.00	249.63	-51.5	
4	4726.6	8.02	249.63	4700.2	-137.2	-369.7	0.00	0.00	-362.4	
5	5127.6	0.00	0.00	5100.0	-147.0	-396.0	2.00	180.00	-388.1	
6	6411.4	0.00	0.00	6383.8	-147.0	-396.0	0.00	0.00	-388.1	
7	7536.5	90.00	90.89	7100.0	-158.2	320.1	8.00	90.89	327.6	
8	11639.2	90.00	90.89	7100.0	-222.2	4422.3	0.00	0.00	4427.9	BHL 1902'FNL & 460'FEL

Vertical Section at 92.88° (550 ft/in)



Synergy Resources

SEC.5-T2N-R68W

SRC Union Pad Sec.5-T2N-R68W

SRC Union 12-5CHZ

Wellbore #1

Plan: Plan #3 (1-2-14)

Standard Planning Report

03 January, 2014

Database:	Landmark	Local Co-ordinate Reference:	Well SRC Union 12-5CHZ
Company:	Synergy Resources	TVD Reference:	WELL @ 4978.5ft (Ensign 131 RKB - 13.5')
Project:	SEC.5-T2N-R68W	MD Reference:	WELL @ 4978.5ft (Ensign 131 RKB - 13.5')
Site:	SRC Union Pad Sec.5-T2N-R68W	North Reference:	True
Well:	SRC Union 12-5CHZ	Survey Calculation Method:	Minimum Curvature
Wellbore:	Wellbore #1		
Design:	Plan #3 (1-2-14)		

Project	SEC.5-T2N-R68W, Weld County, CO		
Map System:	US State Plane 1983	System Datum:	Mean Sea Level
Geo Datum:	North American Datum 1983		Using Well Reference Point
Map Zone:	Colorado Northern Zone		Using geodetic scale factor

Site						SRC Union Pad Sec.5-T2N-R68W											
Site Position:						Northing:			1,305,169.78 ft			Latitude:			40.170152		
From:			Lat/Long			Easting:			3,129,889.07 ft			Longitude:			-105.035203		
Position Uncertainty:			0.0 ft			Slot Radius:			"			Grid Convergence:			0.30 °		

Well	SRC Union 12-5CHZ					
Well Position	+N-S	35.7 ft	Northing:	1,305,205.95 ft	Latitude:	40.170250
	+E-W	93.3 ft	Easting:	3,129,982.22 ft	Longitude:	-105.034869
Position Uncertainty		0.0 ft	Wellhead Elevation:	ft	Ground Level:	4,965.0 ft

Wellbore	Wellbore #1				
Magnetics	Model Name	Sample Date	Declination (°)	Dip Angle (°)	Field Strength (nT)
	IGRF2010	1/2/2014	8.65	66.73	52,712

Design	Plan #3 (1-2-14)			
Audit Notes:				
Version:	Phase:	PROTOTYPE	Tie On Depth:	0.0
Vertical Section:	Depth From (TVD) (ft)	+N/-S (ft)	+E/-W (ft)	Direction (°)
	0.0	0.0	0.0	92.88

Plan Sections										
Measured Depth (ft)	Inclination (°)	Azimuth (°)	Vertical Depth (ft)	+N/-S (ft)	+E/-W (ft)	Dogleg Rate (°/100ft)	Build Rate (°/100ft)	Turn Rate (°/100ft)	TFO (°)	Target
0.0	0.00	0.00	0.0	0.0	0.0	0.00	0.00	0.00	0.00	
1,500.0	0.00	0.00	1,500.0	0.0	0.0	0.00	0.00	0.00	0.00	
2,302.2	8.02	249.63	2,299.5	-19.5	-52.6	1.00	1.00	0.00	249.63	
4,726.6	8.02	249.63	4,700.2	-137.2	-369.7	0.00	0.00	0.00	0.00	
5,127.6	0.00	0.00	5,100.0	-147.0	-396.0	2.00	-2.00	0.00	180.00	
6,411.4	0.00	0.00	6,383.8	-147.0	-396.0	0.00	0.00	0.00	0.00	
7,536.5	90.00	90.89	7,100.0	-158.2	320.1	8.00	8.00	0.00	90.89	
11,639.2	90.00	90.89	7,100.0	-222.2	4,422.3	0.00	0.00	0.00	0.00	BHL 1902'FNL & 46

Database:	Landmark	Local Co-ordinate Reference:	Well SRC Union 12-5CHZ
Company:	Synergy Resources	TVD Reference:	WELL @ 4978.5ft (Ensign 131 RKB - 13.5')
Project:	SEC.5-T2N-R68W	MD Reference:	WELL @ 4978.5ft (Ensign 131 RKB - 13.5')
Site:	SRC Union Pad Sec.5-T2N-R68W	North Reference:	True
Well:	SRC Union 12-5CHZ	Survey Calculation Method:	Minimum Curvature
Wellbore:	Wellbore #1		
Design:	Plan #3 (1-2-14)		

Planned Survey									
Measured Depth (ft)	Inclination (°)	Azimuth (°)	Vertical Depth (ft)	+N/-S (ft)	+E/-W (ft)	Vertical Section (ft)	Dogleg Rate (°/100ft)	Build Rate (°/100ft)	Turn Rate (°/100ft)
0.0	0.00	0.00	0.0	0.0	0.0	0.0	0.00	0.00	0.00
1.0	0.00	0.00	1.0	0.0	0.0	0.0	0.00	0.00	0.00
SHL 1648'FNL & 443'FWL									
100.0	0.00	0.00	100.0	0.0	0.0	0.0	0.00	0.00	0.00
200.0	0.00	0.00	200.0	0.0	0.0	0.0	0.00	0.00	0.00
300.0	0.00	0.00	300.0	0.0	0.0	0.0	0.00	0.00	0.00
400.0	0.00	0.00	400.0	0.0	0.0	0.0	0.00	0.00	0.00
500.0	0.00	0.00	500.0	0.0	0.0	0.0	0.00	0.00	0.00
600.0	0.00	0.00	600.0	0.0	0.0	0.0	0.00	0.00	0.00
700.0	0.00	0.00	700.0	0.0	0.0	0.0	0.00	0.00	0.00
800.0	0.00	0.00	800.0	0.0	0.0	0.0	0.00	0.00	0.00
900.0	0.00	0.00	900.0	0.0	0.0	0.0	0.00	0.00	0.00
1,000.0	0.00	0.00	1,000.0	0.0	0.0	0.0	0.00	0.00	0.00
1,100.0	0.00	0.00	1,100.0	0.0	0.0	0.0	0.00	0.00	0.00
1,200.0	0.00	0.00	1,200.0	0.0	0.0	0.0	0.00	0.00	0.00
1,300.0	0.00	0.00	1,300.0	0.0	0.0	0.0	0.00	0.00	0.00
1,400.0	0.00	0.00	1,400.0	0.0	0.0	0.0	0.00	0.00	0.00
1,500.0	0.00	0.00	1,500.0	0.0	0.0	0.0	0.00	0.00	0.00
KOP #1									
1,600.0	1.00	249.63	1,600.0	-0.3	-0.8	-0.8	1.00	1.00	0.00
1,700.0	2.00	249.63	1,700.0	-1.2	-3.3	-3.2	1.00	1.00	0.00
1,800.0	3.00	249.63	1,799.9	-2.7	-7.4	-7.2	1.00	1.00	0.00
1,900.0	4.00	249.63	1,899.7	-4.9	-13.1	-12.8	1.00	1.00	0.00
2,000.0	5.00	249.63	1,999.4	-7.6	-20.4	-20.0	1.00	1.00	0.00
2,100.0	6.00	249.63	2,098.9	-10.9	-29.4	-28.8	1.00	1.00	0.00
2,200.0	7.00	249.63	2,198.3	-14.9	-40.0	-39.2	1.00	1.00	0.00
2,300.0	8.00	249.63	2,297.4	-19.4	-52.3	-51.2	1.00	1.00	0.00
2,302.2	8.02	249.63	2,299.5	-19.5	-52.6	-51.5	1.00	1.00	0.00
2,400.0	8.02	249.63	2,396.4	-24.3	-65.4	-64.1	0.00	0.00	0.00
2,500.0	8.02	249.63	2,495.4	-29.1	-78.4	-76.9	0.00	0.00	0.00
2,600.0	8.02	249.63	2,594.5	-34.0	-91.5	-89.7	0.00	0.00	0.00
2,700.0	8.02	249.63	2,693.5	-38.8	-104.6	-102.5	0.00	0.00	0.00
2,800.0	8.02	249.63	2,792.5	-43.7	-117.7	-115.3	0.00	0.00	0.00
2,900.0	8.02	249.63	2,891.5	-48.5	-130.8	-128.2	0.00	0.00	0.00
3,000.0	8.02	249.63	2,990.6	-53.4	-143.8	-141.0	0.00	0.00	0.00
3,100.0	8.02	249.63	3,089.6	-58.3	-156.9	-153.8	0.00	0.00	0.00
3,200.0	8.02	249.63	3,188.6	-63.1	-170.0	-166.6	0.00	0.00	0.00
3,300.0	8.02	249.63	3,287.6	-68.0	-183.1	-179.5	0.00	0.00	0.00
3,400.0	8.02	249.63	3,386.6	-72.8	-196.2	-192.3	0.00	0.00	0.00
3,500.0	8.02	249.63	3,485.7	-77.7	-209.3	-205.1	0.00	0.00	0.00
3,600.0	8.02	249.63	3,584.7	-82.5	-222.3	-217.9	0.00	0.00	0.00
3,700.0	8.02	249.63	3,683.7	-87.4	-235.4	-230.7	0.00	0.00	0.00
3,800.0	8.02	249.63	3,782.7	-92.2	-248.5	-243.6	0.00	0.00	0.00
3,900.0	8.02	249.63	3,881.7	-97.1	-261.6	-256.4	0.00	0.00	0.00
4,000.0	8.02	249.63	3,980.8	-102.0	-274.7	-269.2	0.00	0.00	0.00
4,100.0	8.02	249.63	4,079.8	-106.8	-287.8	-282.0	0.00	0.00	0.00
4,200.0	8.02	249.63	4,178.8	-111.7	-300.8	-294.9	0.00	0.00	0.00
4,300.0	8.02	249.63	4,277.8	-116.5	-313.9	-307.7	0.00	0.00	0.00
4,400.0	8.02	249.63	4,376.9	-121.4	-327.0	-320.5	0.00	0.00	0.00
4,500.0	8.02	249.63	4,475.9	-126.2	-340.1	-333.3	0.00	0.00	0.00
4,600.0	8.02	249.63	4,574.9	-131.1	-353.2	-346.1	0.00	0.00	0.00
4,700.0	8.02	249.63	4,673.9	-136.0	-366.2	-359.0	0.00	0.00	0.00
4,726.6	8.02	249.63	4,700.2	-137.2	-369.7	-362.4	0.00	0.00	0.00
4,800.0	6.55	249.63	4,773.1	-140.5	-378.5	-370.9	2.00	-2.00	0.00

Database:	Landmark	Local Co-ordinate Reference:	Well SRC Union 12-5CHZ
Company:	Synergy Resources	TVD Reference:	WELL @ 4978.5ft (Ensign 131 RKB - 13.5')
Project:	SEC.5-T2N-R68W	MD Reference:	WELL @ 4978.5ft (Ensign 131 RKB - 13.5')
Site:	SRC Union Pad Sec.5-T2N-R68W	North Reference:	True
Well:	SRC Union 12-5CHZ	Survey Calculation Method:	Minimum Curvature
Wellbore:	Wellbore #1		
Design:	Plan #3 (1-2-14)		

Planned Survey									
Measured Depth (ft)	Inclination (°)	Azimuth (°)	Vertical Depth (ft)	+N/-S (ft)	+E/-W (ft)	Vertical Section (ft)	Dogleg Rate (°/100ft)	Build Rate (°/100ft)	Turn Rate (°/100ft)
4,900.0	4.55	249.63	4,872.6	-143.9	-387.5	-379.8	2.00	-2.00	0.00
5,000.0	2.55	249.63	4,972.4	-146.0	-393.3	-385.5	2.00	-2.00	0.00
5,100.0	0.55	249.63	5,072.4	-147.0	-395.9	-388.0	2.00	-2.00	0.00
5,127.6	0.00	0.00	5,100.0	-147.0	-396.0	-388.1	2.00	-2.00	0.00
5,200.0	0.00	0.00	5,172.4	-147.0	-396.0	-388.1	0.00	0.00	0.00
5,300.0	0.00	0.00	5,272.4	-147.0	-396.0	-388.1	0.00	0.00	0.00
5,400.0	0.00	0.00	5,372.4	-147.0	-396.0	-388.1	0.00	0.00	0.00
5,500.0	0.00	0.00	5,472.4	-147.0	-396.0	-388.1	0.00	0.00	0.00
5,600.0	0.00	0.00	5,572.4	-147.0	-396.0	-388.1	0.00	0.00	0.00
5,700.0	0.00	0.00	5,672.4	-147.0	-396.0	-388.1	0.00	0.00	0.00
5,800.0	0.00	0.00	5,772.4	-147.0	-396.0	-388.1	0.00	0.00	0.00
5,900.0	0.00	0.00	5,872.4	-147.0	-396.0	-388.1	0.00	0.00	0.00
6,000.0	0.00	0.00	5,972.4	-147.0	-396.0	-388.1	0.00	0.00	0.00
6,100.0	0.00	0.00	6,072.4	-147.0	-396.0	-388.1	0.00	0.00	0.00
6,200.0	0.00	0.00	6,172.4	-147.0	-396.0	-388.1	0.00	0.00	0.00
6,300.0	0.00	0.00	6,272.4	-147.0	-396.0	-388.1	0.00	0.00	0.00
6,400.0	0.00	0.00	6,372.4	-147.0	-396.0	-388.1	0.00	0.00	0.00
6,411.4	0.00	0.00	6,383.8	-147.0	-396.0	-388.1	0.00	0.00	0.00
KOP #2									
6,500.0	7.08	90.89	6,472.1	-147.1	-390.5	-382.7	8.00	8.00	0.00
6,600.0	15.08	90.89	6,570.2	-147.4	-371.3	-363.5	8.00	8.00	0.00
6,700.0	23.08	90.89	6,664.6	-147.9	-338.7	-330.8	8.00	8.00	0.00
6,800.0	31.08	90.89	6,753.6	-148.6	-293.2	-285.3	8.00	8.00	0.00
6,900.0	39.08	90.89	6,835.3	-149.5	-235.8	-228.0	8.00	8.00	0.00
7,000.0	47.08	90.89	6,908.3	-150.6	-167.5	-159.7	8.00	8.00	0.00
7,100.0	55.08	90.89	6,971.1	-151.8	-89.8	-82.0	8.00	8.00	0.00
7,200.0	63.08	90.89	7,022.4	-153.1	-4.1	3.6	8.00	8.00	0.00
7,300.0	71.08	90.89	7,061.3	-154.6	88.0	95.6	8.00	8.00	0.00
7,400.0	79.08	90.89	7,087.0	-156.1	184.5	192.1	8.00	8.00	0.00
7,500.0	87.08	90.89	7,099.1	-157.6	283.7	291.2	8.00	8.00	0.00
7,536.5	90.00	90.89	7,100.0	-158.2	320.2	327.7	7.99	7.99	0.00
End of Build - 7"									
7,600.0	90.00	90.89	7,100.0	-159.2	383.7	391.2	0.00	0.00	0.00
7,700.0	90.00	90.89	7,100.0	-160.7	483.6	491.1	0.00	0.00	0.00
7,800.0	90.00	90.89	7,100.0	-162.3	583.6	591.0	0.00	0.00	0.00
7,900.0	90.00	90.89	7,100.0	-163.8	683.6	691.0	0.00	0.00	0.00
8,000.0	90.00	90.89	7,100.0	-165.4	783.6	790.9	0.00	0.00	0.00
8,100.0	90.00	90.89	7,100.0	-167.0	883.6	890.9	0.00	0.00	0.00
8,200.0	90.00	90.89	7,100.0	-168.5	983.6	990.8	0.00	0.00	0.00
8,300.0	90.00	90.89	7,100.0	-170.1	1,083.6	1,090.7	0.00	0.00	0.00
8,400.0	90.00	90.89	7,100.0	-171.6	1,183.6	1,190.7	0.00	0.00	0.00
8,500.0	90.00	90.89	7,100.0	-173.2	1,283.5	1,290.6	0.00	0.00	0.00
8,600.0	90.00	90.89	7,100.0	-174.8	1,383.5	1,390.6	0.00	0.00	0.00
8,700.0	90.00	90.89	7,100.0	-176.3	1,483.5	1,490.5	0.00	0.00	0.00
8,800.0	90.00	90.89	7,100.0	-177.9	1,583.5	1,590.4	0.00	0.00	0.00
8,900.0	90.00	90.89	7,100.0	-179.4	1,683.5	1,690.4	0.00	0.00	0.00
9,000.0	90.00	90.89	7,100.0	-181.0	1,783.5	1,790.3	0.00	0.00	0.00
9,100.0	90.00	90.89	7,100.0	-182.6	1,883.5	1,890.3	0.00	0.00	0.00
9,200.0	90.00	90.89	7,100.0	-184.1	1,983.5	1,990.2	0.00	0.00	0.00
9,300.0	90.00	90.89	7,100.0	-185.7	2,083.4	2,090.1	0.00	0.00	0.00
9,400.0	90.00	90.89	7,100.0	-187.2	2,183.4	2,190.1	0.00	0.00	0.00
9,500.0	90.00	90.89	7,100.0	-188.8	2,283.4	2,290.0	0.00	0.00	0.00
9,600.0	90.00	90.89	7,100.0	-190.4	2,383.4	2,390.0	0.00	0.00	0.00
9,700.0	90.00	90.89	7,100.0	-191.9	2,483.4	2,489.9	0.00	0.00	0.00

Database:	Landmark	Local Co-ordinate Reference:	Well SRC Union 12-5CHZ
Company:	Synergy Resources	TVD Reference:	WELL @ 4978.5ft (Ensign 131 RKB - 13.5')
Project:	SEC.5-T2N-R68W	MD Reference:	WELL @ 4978.5ft (Ensign 131 RKB - 13.5')
Site:	SRC Union Pad Sec.5-T2N-R68W	North Reference:	True
Well:	SRC Union 12-5CHZ	Survey Calculation Method:	Minimum Curvature
Wellbore:	Wellbore #1		
Design:	Plan #3 (1-2-14)		

Planned Survey										
Measured Depth (ft)	Inclination (°)	Azimuth (°)	Vertical Depth (ft)	+N/-S (ft)	+E/-W (ft)	Vertical Section (ft)	Dogleg Rate (°/100ft)	Build Rate (°/100ft)	Turn Rate (°/100ft)	
9,800.0	90.00	90.89	7,100.0	-193.5	2,583.4	2,589.8	0.00	0.00	0.00	
9,900.0	90.00	90.89	7,100.0	-195.0	2,683.4	2,689.8	0.00	0.00	0.00	
10,000.0	90.00	90.89	7,100.0	-196.6	2,783.4	2,789.7	0.00	0.00	0.00	
10,100.0	90.00	90.89	7,100.0	-198.2	2,883.3	2,889.7	0.00	0.00	0.00	
10,200.0	90.00	90.89	7,100.0	-199.7	2,983.3	2,989.6	0.00	0.00	0.00	
10,300.0	90.00	90.89	7,100.0	-201.3	3,083.3	3,089.5	0.00	0.00	0.00	
10,400.0	90.00	90.89	7,100.0	-202.8	3,183.3	3,189.5	0.00	0.00	0.00	
10,500.0	90.00	90.89	7,100.0	-204.4	3,283.3	3,289.4	0.00	0.00	0.00	
10,600.0	90.00	90.89	7,100.0	-206.0	3,383.3	3,389.4	0.00	0.00	0.00	
10,700.0	90.00	90.89	7,100.0	-207.5	3,483.3	3,489.3	0.00	0.00	0.00	
10,800.0	90.00	90.89	7,100.0	-209.1	3,583.3	3,589.2	0.00	0.00	0.00	
10,900.0	90.00	90.89	7,100.0	-210.6	3,683.3	3,689.2	0.00	0.00	0.00	
11,000.0	90.00	90.89	7,100.0	-212.2	3,783.2	3,789.1	0.00	0.00	0.00	
11,100.0	90.00	90.89	7,100.0	-213.8	3,883.2	3,889.1	0.00	0.00	0.00	
11,200.0	90.00	90.89	7,100.0	-215.3	3,983.2	3,989.0	0.00	0.00	0.00	
11,300.0	90.00	90.89	7,100.0	-216.9	4,083.2	4,088.9	0.00	0.00	0.00	
11,400.0	90.00	90.89	7,100.0	-218.4	4,183.2	4,188.9	0.00	0.00	0.00	
11,500.0	90.00	90.89	7,100.0	-220.0	4,283.2	4,288.8	0.00	0.00	0.00	
11,600.0	90.00	90.89	7,100.0	-221.6	4,383.2	4,388.8	0.00	0.00	0.00	
11,639.2	90.00	90.89	7,100.0	-222.2	4,422.3	4,427.9	0.00	0.00	0.00	
BHL 1902'FNL & 460'FEL										

Casing Points					
Measured Depth (ft)	Vertical Depth (ft)	Name	Casing Diameter (")	Hole Diameter (")	
7,536.5	7,100.0	7"	7	8-3/4	

Plan Annotations					
Measured Depth (ft)	Vertical Depth (ft)	Local Coordinates			
		+N/-S (ft)	+E/-W (ft)	Comment	
1,500.0	1,500.0	0.0	0.0	KOP #1	
6,411.4	6,383.8	-147.0	-396.0	KOP #2	
7,536.5	7,100.0	-158.2	320.2	End of Build	



Synergy Resources

SEC.5-T2N-R68W

SRC Union Pad Sec.5-T2N-R68W

SRC Union 12-5CHZ

Wellbore #1

Plan #3 (1-2-14)

Anticollision Report

03 January, 2014

Company:	Synergy Resources	Local Co-ordinate Reference:	Well SRC Union 12-5CHZ
Project:	SEC.5-T2N-R68W	TVD Reference:	WELL @ 4978.5ft (Ensign 131 RKB - 13.5')
Reference Site:	SRC Union Pad Sec.5-T2N-R68W	MD Reference:	WELL @ 4978.5ft (Ensign 131 RKB - 13.5')
Site Error:	0.0ft	North Reference:	True
Reference Well:	SRC Union 12-5CHZ	Survey Calculation Method:	Minimum Curvature
Well Error:	0.0ft	Output errors are at	2.00 sigma
Reference Wellbore	Wellbore #1	Database:	Landmark
Reference Design:	Plan #3 (1-2-14)	Offset TVD Reference:	Offset Datum

Offset Design												Offset Site Error:	0.0 ft
Survey Program: 0-MWD												Offset Well Error:	0.0 ft
Reference		Offset		Semi Major Axis			Distance						
Measured Depth (ft)	Vertical Depth (ft)	Measured Depth (ft)	Vertical Depth (ft)	Reference (ft)	Offset (ft)	Highside Toolface (°)	Offset Wellbore Centre +N/-S (ft)	+E/-W (ft)	Between Centres (ft)	Between Ellipses (ft)	Minimum Separation (ft)	Separation Factor	Warning
1,600.0	1,600.0	1,595.9	1,595.8	3.5	3.4	-3.28	-26.9	-61.6	66.4	59.6	6.83	9.717	
1,700.0	1,700.0	1,694.8	1,694.5	3.7	3.6	-5.19	-31.1	-65.8	69.4	62.2	7.21	9.632	
1,800.0	1,799.9	1,793.5	1,792.9	3.9	3.8	-7.52	-36.5	-71.2	72.5	64.9	7.59	9.545	
1,900.0	1,899.7	1,892.2	1,891.1	4.1	4.0	-10.21	-43.1	-77.8	75.5	67.6	7.98	9.467	
2,000.0	1,999.4	1,990.8	1,989.1	4.3	4.2	-13.21	-50.9	-85.5	78.8	70.4	8.37	9.405	
2,100.0	2,098.9	2,089.2	2,086.7	4.5	4.5	-16.47	-59.9	-94.5	82.2	73.4	8.78	9.367	
2,200.0	2,198.3	2,188.6	2,185.1	4.7	4.7	-19.94	-69.9	-104.4	85.6	76.4	9.19	9.312	
2,300.0	2,297.4	2,288.4	2,283.9	5.0	5.0	-23.61	-80.0	-114.5	87.7	78.1	9.62	9.121	
2,400.0	2,396.4	2,388.2	2,382.7	5.3	5.3	-27.36	-90.0	-124.5	89.4	79.3	10.07	8.875	
2,500.0	2,495.4	2,488.1	2,481.5	5.5	5.6	-30.96	-100.1	-134.6	91.4	80.9	10.54	8.671	
2,600.0	2,594.5	2,587.9	2,580.3	5.8	5.9	-34.39	-110.2	-144.6	93.8	82.8	11.03	8.503	
2,700.0	2,693.5	2,687.7	2,679.1	6.1	6.2	-37.64	-120.2	-154.6	96.5	85.0	11.54	8.363	
2,800.0	2,792.5	2,787.5	2,777.9	6.4	6.5	-40.71	-130.3	-164.7	99.5	87.4	12.07	8.246	
2,900.0	2,891.5	2,887.3	2,876.7	6.7	6.8	-43.59	-140.4	-174.7	102.8	90.1	12.61	8.149	
3,000.0	2,990.6	2,987.1	2,975.5	7.0	7.2	-46.28	-150.5	-184.8	106.3	93.1	13.17	8.067	
3,100.0	3,089.6	3,087.0	3,074.3	7.3	7.5	-48.80	-160.5	-194.8	110.0	96.2	13.75	7.999	
3,200.0	3,188.6	3,186.8	3,173.1	7.6	7.8	-51.15	-170.6	-204.9	113.9	99.6	14.34	7.942	
3,300.0	3,287.6	3,286.6	3,271.9	8.0	8.1	-53.34	-180.7	-214.9	118.0	103.1	14.95	7.894	
3,400.0	3,386.6	3,386.4	3,370.7	8.3	8.5	-55.38	-190.7	-224.9	122.3	106.7	15.57	7.855	
3,500.0	3,485.7	3,486.2	3,469.5	8.6	8.8	-57.28	-200.8	-235.0	126.7	110.5	16.20	7.822	
3,600.0	3,584.7	3,586.0	3,568.3	8.9	9.1	-59.05	-210.9	-245.0	131.2	114.4	16.83	7.796	
3,700.0	3,683.7	3,685.9	3,667.1	9.3	9.5	-60.70	-221.0	-255.1	135.9	118.4	17.48	7.774	
3,800.0	3,782.7	3,785.7	3,765.9	9.6	9.8	-62.24	-231.0	-265.1	140.7	122.5	18.13	7.757	
3,900.0	3,881.7	3,885.5	3,864.7	9.9	10.2	-63.68	-241.1	-275.1	145.5	126.7	18.79	7.744	
4,000.0	3,980.8	3,985.3	3,963.5	10.3	10.5	-65.03	-251.2	-285.2	150.5	131.0	19.45	7.734	
4,100.0	4,079.8	4,085.1	4,062.3	10.6	10.8	-66.28	-261.2	-295.2	155.5	135.4	20.12	7.726	
4,200.0	4,178.8	4,185.0	4,161.1	10.9	11.2	-67.46	-271.3	-305.3	160.6	139.8	20.80	7.721	
4,300.0	4,277.8	4,284.8	4,259.9	11.3	11.5	-68.57	-281.4	-315.3	165.7	144.3	21.47	7.718	
4,400.0	4,376.9	4,384.6	4,358.7	11.6	11.9	-69.61	-291.4	-325.3	170.9	148.8	22.15	7.717	
4,500.0	4,475.9	4,484.4	4,457.5	11.9	12.2	-70.59	-301.5	-335.4	176.2	153.4	22.83	7.718	
4,600.0	4,574.9	4,584.2	4,556.3	12.3	12.6	-71.51	-311.6	-345.4	181.5	158.0	23.51	7.719	
4,700.0	4,673.9	4,684.0	4,655.1	12.6	12.9	-72.38	-321.7	-355.5	186.9	162.7	24.20	7.722	
4,800.0	4,773.1	4,783.9	4,753.9	12.9	13.3	-73.01	-331.7	-365.5	192.5	167.7	24.84	7.752	
4,900.0	4,872.6	4,883.6	4,852.6	13.1	13.6	-72.73	-341.8	-375.6	199.2	173.9	25.34	7.862	
5,000.0	4,972.4	4,986.3	4,954.4	13.3	13.9	-71.66	-351.7	-385.4	206.5	180.8	25.74	8.022	
5,100.0	5,072.4	5,091.3	5,058.8	13.5	14.2	-70.38	-359.3	-393.0	212.7	186.7	26.05	8.167	
5,200.0	5,172.4	5,196.7	5,164.0	13.7	14.4	-179.50	-364.2	-397.9	217.3	192.7	24.66	8.814	
5,300.0	5,272.4	5,302.5	5,269.7	13.8	14.6	-178.94	-366.4	-400.1	219.4	194.3	25.08	8.748	
5,400.0	5,372.4	5,404.1	5,371.4	14.0	14.7	-178.91	-366.5	-400.2	219.5	194.1	25.46	8.624	
5,500.0	5,472.4	5,504.1	5,471.4	14.2	14.9	-178.91	-366.5	-400.2	219.5	193.7	25.82	8.503	
5,600.0	5,572.4	5,604.1	5,571.4	14.4	15.0	-178.91	-366.5	-400.2	219.5	193.3	26.18	8.384	
5,700.0	5,672.4	5,704.1	5,671.4	14.5	15.2	-178.91	-366.5	-400.2	219.5	193.0	26.55	8.268	
5,800.0	5,772.4	5,804.1	5,771.4	14.7	15.3	-178.91	-366.5	-400.2	219.5	192.6	26.92	8.154	
5,900.0	5,872.4	5,904.1	5,871.4	14.9	15.5	-178.91	-366.5	-400.2	219.5	192.2	27.30	8.043	
6,000.0	5,972.4	6,004.1	5,971.4	15.1	15.7	-178.91	-366.5	-400.2	219.5	191.9	27.67	7.934	
6,100.0	6,072.4	6,104.1	6,071.4	15.3	15.8	-178.91	-366.5	-400.2	219.5	191.5	28.05	7.827	
6,200.0	6,172.4	6,204.1	6,171.4	15.4	16.0	-178.91	-366.5	-400.2	219.5	191.1	28.43	7.723	
6,300.0	6,272.4	6,304.1	6,271.4	15.6	16.2	-178.91	-366.5	-400.2	219.5	190.7	28.81	7.620	
6,400.0	6,372.4	6,404.1	6,371.4	15.8	16.3	-178.91	-366.5	-400.2	219.5	190.3	29.19	7.521	
6,439.9	6,412.2	6,444.1	6,411.2	15.9	16.4	90.09	-366.5	-398.8	219.5	188.8	30.74	7.141	
6,500.0	6,472.1	6,504.1	6,470.9	15.9	16.5	89.63	-366.6	-392.6	219.5	188.6	30.92	7.100	
6,600.0	6,570.2	6,603.7	6,568.2	16.0	16.5	89.06	-366.9	-371.3	219.6	188.5	31.06	7.069	

CC - Min centre to center distance or convergent point, SF - min separation factor, ES - min ellipse separation

Company:	Synergy Resources	Local Co-ordinate Reference:	Well SRC Union 12-5CHZ
Project:	SEC.5-T2N-R68W	TVD Reference:	WELL @ 4978.5ft (Ensign 131 RKB - 13.5')
Reference Site:	SRC Union Pad Sec.5-T2N-R68W	MD Reference:	WELL @ 4978.5ft (Ensign 131 RKB - 13.5')
Site Error:	0.0ft	North Reference:	True
Reference Well:	SRC Union 12-5CHZ	Survey Calculation Method:	Minimum Curvature
Well Error:	0.0ft	Output errors are at	2.00 sigma
Reference Wellbore	Wellbore #1	Database:	Landmark
Reference Design:	Plan #3 (1-2-14)	Offset TVD Reference:	Offset Datum

Offset Design												Offset Site Error:	0.0 ft
Survey Program: 0-MWDD												Offset Well Error:	0.0 ft
Reference		Offset		Semi Major Axis			Distance						Warning
Measured Depth (ft)	Vertical Depth (ft)	Measured Depth (ft)	Vertical Depth (ft)	Reference (ft)	Offset (ft)	Highside Toolface (°)	Offset Wellbore Centre +N/-S (ft)	+E/-W (ft)	Between Centres (ft)	Between Ellipses (ft)	Minimum Separation (ft)	Separation Factor	
6,700.0	6,664.6	6,703.0	6,661.2	16.0	16.5	88.50	-367.5	-336.9	219.6	188.5	31.09	7.062	
6,800.0	6,753.6	6,802.1	6,748.4	16.0	16.5	87.98	-368.2	-290.0	219.7	188.6	31.11	7.062	
6,900.0	6,835.3	6,900.9	6,828.1	16.0	16.4	87.49	-369.1	-231.8	219.7	188.5	31.22	7.038	
7,000.0	6,908.3	6,999.4	6,898.9	16.1	16.4	87.05	-370.2	-163.4	219.8	188.2	31.61	6.953	
7,100.0	6,971.1	7,097.7	6,959.5	16.5	16.5	86.67	-371.4	-86.0	219.9	187.5	32.46	6.775	
7,200.0	7,022.4	7,195.9	7,008.9	17.1	16.9	86.36	-372.7	-1.3	220.0	186.1	33.90	6.490	
7,300.0	7,061.3	7,293.9	7,046.2	18.1	17.9	86.11	-374.1	89.2	220.1	184.0	36.01	6.111	
7,400.0	7,087.0	7,391.8	7,070.7	19.5	19.3	85.94	-375.6	183.9	220.1	181.3	38.77	5.678	
7,500.0	7,099.1	7,489.7	7,082.1	21.1	21.0	85.85	-377.1	281.0	220.1	178.1	42.05	5.234	
7,600.0	7,100.0	7,588.9	7,083.0	23.0	22.9	85.83	-378.7	380.2	220.1	174.4	45.76	4.810	
7,700.0	7,100.0	7,688.9	7,083.0	25.0	24.9	85.83	-380.3	480.2	220.1	170.3	49.83	4.418	
7,800.0	7,100.0	7,788.9	7,083.0	27.1	27.1	85.83	-381.8	580.2	220.1	166.0	54.17	4.064	
7,900.0	7,100.0	7,888.9	7,083.0	29.4	29.5	85.83	-383.4	680.2	220.1	161.4	58.72	3.749	
8,000.0	7,100.0	7,988.9	7,083.0	31.8	31.8	85.83	-384.9	780.2	220.2	156.7	63.44	3.470	
8,100.0	7,100.0	8,088.9	7,083.0	34.2	34.3	85.83	-386.5	880.2	220.2	151.9	68.30	3.224	
8,200.0	7,100.0	8,188.9	7,083.0	36.7	36.8	85.83	-388.1	980.1	220.2	146.9	73.26	3.005	
8,300.0	7,100.0	8,288.9	7,083.0	39.2	39.3	85.83	-389.6	1,080.1	220.2	141.9	78.30	2.812	
8,400.0	7,100.0	8,388.9	7,083.0	41.7	41.9	85.83	-391.2	1,180.1	220.2	136.7	83.42	2.639	
8,500.0	7,100.0	8,488.9	7,083.0	44.3	44.5	85.83	-392.8	1,280.1	220.2	131.6	88.60	2.485	
8,600.0	7,100.0	8,588.9	7,083.0	46.9	47.1	85.83	-394.3	1,380.1	220.2	126.3	93.83	2.347	
8,700.0	7,100.0	8,688.9	7,083.0	49.6	49.8	85.83	-395.9	1,480.1	220.2	121.1	99.09	2.222	
8,800.0	7,100.0	8,788.9	7,083.0	52.2	52.4	85.83	-397.5	1,580.1	220.2	115.8	104.39	2.109	
8,900.0	7,100.0	8,888.9	7,083.0	54.9	55.1	85.83	-399.0	1,680.1	220.2	110.5	109.73	2.007	
9,000.0	7,100.0	8,988.9	7,083.0	57.6	57.8	85.83	-400.6	1,780.0	220.2	105.1	115.08	1.913	
9,100.0	7,100.0	9,088.9	7,083.0	60.3	60.5	85.83	-402.1	1,880.0	220.2	99.7	120.46	1.828	
9,200.0	7,100.0	9,188.9	7,083.0	63.0	63.2	85.83	-403.7	1,980.0	220.2	94.3	125.86	1.749	
9,300.0	7,100.0	9,288.9	7,083.0	65.7	65.9	85.83	-405.3	2,080.0	220.2	88.9	131.28	1.677	
9,400.0	7,100.0	9,388.9	7,083.0	68.4	68.6	85.83	-406.8	2,180.0	220.2	83.5	136.71	1.611	
9,500.0	7,100.0	9,488.9	7,083.0	71.1	71.4	85.83	-408.4	2,280.0	220.2	78.1	142.15	1.549	
9,600.0	7,100.0	9,588.9	7,083.0	73.9	74.1	85.83	-410.0	2,380.0	220.2	72.6	147.61	1.492 Level 3	
9,700.0	7,100.0	9,688.9	7,083.0	76.6	76.9	85.83	-411.5	2,480.0	220.2	67.1	153.08	1.439 Level 3	
9,800.0	7,100.0	9,788.9	7,083.0	79.3	79.6	85.83	-413.1	2,580.0	220.2	61.7	158.55	1.389 Level 3	
9,900.0	7,100.0	9,888.9	7,083.0	82.1	82.3	85.83	-414.7	2,679.9	220.2	56.2	164.04	1.343 Level 3	
10,000.0	7,100.0	9,988.9	7,083.0	84.8	85.1	85.83	-416.2	2,779.9	220.2	50.7	169.53	1.299 Level 3	
10,100.0	7,100.0	10,088.9	7,083.0	87.6	87.9	85.83	-417.8	2,879.9	220.2	45.2	175.03	1.258 Level 3	
10,200.0	7,100.0	10,188.9	7,083.0	90.4	90.6	85.83	-419.3	2,979.9	220.2	39.7	180.53	1.220 Level 2	
10,300.0	7,100.0	10,288.9	7,083.0	93.1	93.4	85.83	-420.9	3,079.9	220.2	34.2	186.04	1.184 Level 2	
10,400.0	7,100.0	10,388.9	7,083.0	95.9	96.1	85.83	-422.5	3,179.9	220.2	28.7	191.56	1.150 Level 2	
10,500.0	7,100.0	10,488.9	7,083.0	98.6	98.9	85.83	-424.0	3,279.9	220.2	23.2	197.08	1.118 Level 2	
10,600.0	7,100.0	10,588.9	7,083.0	101.4	101.7	85.83	-425.6	3,379.9	220.2	17.6	202.61	1.087 Level 2	
10,700.0	7,100.0	10,688.9	7,083.0	104.2	104.5	85.83	-427.2	3,479.8	220.2	12.1	208.14	1.058 Level 2	
10,800.0	7,100.0	10,788.9	7,083.0	107.0	107.2	85.83	-428.7	3,579.8	220.3	6.6	213.67	1.031 Level 2	
10,900.0	7,100.0	10,888.9	7,083.0	109.7	110.0	85.83	-430.3	3,679.8	220.3	1.0	219.21	1.005 Level 2	
11,000.0	7,100.0	10,988.9	7,083.0	112.5	112.8	85.83	-431.9	3,779.8	220.3	-4.5	224.75	0.980 Level 1	
11,100.0	7,100.0	11,088.9	7,083.0	115.3	115.6	85.83	-433.4	3,879.8	220.3	-10.0	230.29	0.956 Level 1	
11,200.0	7,100.0	11,188.9	7,083.0	118.1	118.3	85.83	-435.0	3,979.8	220.3	-15.6	235.83	0.934 Level 1	
11,300.0	7,100.0	11,288.9	7,083.0	120.9	121.1	85.83	-436.5	4,079.8	220.3	-21.1	241.38	0.913 Level 1	
11,400.0	7,100.0	11,388.9	7,083.0	123.6	123.9	85.83	-438.1	4,179.8	220.3	-26.7	246.93	0.892 Level 1	
11,500.0	7,100.0	11,488.9	7,083.0	126.4	126.7	85.83	-439.7	4,279.7	220.3	-32.2	252.49	0.872 Level 1	
11,600.0	7,100.0	11,588.9	7,083.0	129.2	129.5	85.83	-441.2	4,379.7	220.3	-37.8	258.04	0.854 Level 1	
11,620.1	7,100.0	11,609.0	7,083.0	129.8	130.0	85.83	-441.6	4,399.8	220.3	-38.9	259.16	0.850 Level 1	
11,639.2	7,100.0	11,627.3	7,083.0	130.3	130.6	85.83	-441.8	4,418.2	220.3	-39.9	260.20	0.847 Level 1, ES, SF	

CC - Min centre to center distance or convergent point, SF - min separation factor, ES - min ellipse separation

Company:	Synergy Resources	Local Co-ordinate Reference:	Well SRC Union 12-5CHZ
Project:	SEC.5-T2N-R68W	TVD Reference:	WELL @ 4978.5ft (Ensign 131 RKB - 13.5')
Reference Site:	SRC Union Pad Sec.5-T2N-R68W	MD Reference:	WELL @ 4978.5ft (Ensign 131 RKB - 13.5')
Site Error:	0.0ft	North Reference:	True
Reference Well:	SRC Union 12-5CHZ	Survey Calculation Method:	Minimum Curvature
Well Error:	0.0ft	Output errors are at	2.00 sigma
Reference Wellbore	Wellbore #1	Database:	Landmark
Reference Design:	Plan #3 (1-2-14)	Offset TVD Reference:	Offset Datum

Company:	Synergy Resources	Local Co-ordinate Reference:	Well SRC Union 12-5CHZ
Project:	SEC.5-T2N-R68W	TVD Reference:	WELL @ 4978.5ft (Ensign 131 RKB - 13.5')
Reference Site:	SRC Union Pad Sec.5-T2N-R68W	MD Reference:	WELL @ 4978.5ft (Ensign 131 RKB - 13.5')
Site Error:	0.0ft	North Reference:	True
Reference Well:	SRC Union 12-5CHZ	Survey Calculation Method:	Minimum Curvature
Well Error:	0.0ft	Output errors are at	2.00 sigma
Reference Wellbore	Wellbore #1	Database:	Landmark
Reference Design:	Plan #3 (1-2-14)	Offset TVD Reference:	Offset Datum

Offset Design													Offset Site Error:	0.0 ft
Survey Program: 0-MWD													Offset Well Error:	0.0 ft
Reference		Offset		Semi Major Axis			Distance							Warning
Measured Depth (ft)	Vertical Depth (ft)	Measured Depth (ft)	Vertical Depth (ft)	Reference (ft)	Offset (ft)	Highside Toolface (°)	Offset Wellbore Centre +N/-S (ft)	+E/-W (ft)	Between Centres (ft)	Between Ellipses (ft)	Minimum Separation (ft)	Separation Factor		
0.0	0.0	0.0	0.0	0.0	0.0	-110.93	-35.7	-93.3	100.0					
100.0	100.0	98.0	98.0	0.1	0.1	-110.93	-35.7	-93.3	99.9	99.7	0.22	449.101		
200.0	200.0	198.0	198.0	0.3	0.3	-110.93	-35.7	-93.3	99.9	99.3	0.67	149.200		
300.0	300.0	298.0	298.0	0.6	0.6	-110.93	-35.7	-93.3	99.9	98.8	1.12	89.281		
400.0	400.0	398.0	398.0	0.8	0.8	-110.93	-35.7	-93.3	99.9	98.4	1.57	63.699		
500.0	500.0	498.0	498.0	1.0	1.0	-110.93	-35.7	-93.3	99.9	97.9	2.02	49.512		
600.0	600.0	598.0	598.0	1.2	1.2	-110.93	-35.7	-93.3	99.9	97.5	2.47	40.493		
700.0	700.0	698.0	698.0	1.5	1.5	-110.45	-34.9	-93.6	99.9	97.0	2.92	34.255		
748.4	748.4	746.5	746.4	1.6	1.6	-109.86	-33.9	-94.0	99.9	96.8	3.13	31.872 CC		
800.0	800.0	798.0	797.9	1.7	1.7	-108.97	-32.5	-94.5	99.9	96.6	3.37	29.681		
900.0	900.0	897.8	897.7	1.9	1.9	-106.49	-28.4	-96.0	100.1	96.3	3.82	26.217 ES		
1,000.0	1,000.0	997.5	997.2	2.1	2.1	-103.06	-22.7	-98.0	100.6	96.4	4.27	23.563		
1,100.0	1,100.0	1,096.9	1,096.3	2.4	2.4	-98.72	-15.4	-100.7	101.8	97.1	4.73	21.546		
1,200.0	1,200.0	1,196.0	1,195.0	2.6	2.6	-93.62	-6.6	-103.9	104.1	98.9	5.19	20.062		
1,300.0	1,300.0	1,294.8	1,293.1	2.8	2.9	-87.94	3.9	-107.6	107.8	102.2	5.66	19.038		
1,400.0	1,400.0	1,393.2	1,390.6	3.0	3.2	-81.94	15.9	-112.0	113.3	107.2	6.15	18.418		
1,500.0	1,500.0	1,491.0	1,487.5	3.3	3.4	-75.90	29.3	-116.8	120.9	114.3	6.66	18.148		
1,600.0	1,600.0	1,588.4	1,583.5	3.5	3.8	40.47	44.3	-122.2	130.1	123.0	7.11	18.314		
1,700.0	1,700.0	1,686.1	1,679.6	3.7	4.1	46.53	60.6	-128.1	140.5	133.0	7.55	18.611		
1,800.0	1,799.9	1,784.4	1,776.3	3.9	4.4	52.29	77.2	-134.1	151.4	143.4	7.99	18.950		
1,900.0	1,899.7	1,882.6	1,872.9	4.1	4.8	57.73	93.7	-140.1	162.6	154.2	8.42	19.317		
2,000.0	1,999.4	1,980.6	1,969.4	4.3	5.2	62.90	110.2	-146.0	174.5	165.6	8.85	19.710		
2,100.0	2,098.9	2,078.5	2,065.7	4.5	5.5	67.85	126.7	-152.0	186.9	177.6	9.29	20.126		
2,200.0	2,198.3	2,176.3	2,161.9	4.7	5.9	72.60	143.2	-157.9	200.2	190.4	9.74	20.559		
2,300.0	2,297.4	2,273.8	2,257.8	5.0	6.2	77.15	159.6	-163.9	214.3	204.1	10.20	21.005		
2,400.0	2,396.4	2,371.2	2,353.7	5.3	6.6	81.47	176.0	-169.8	229.6	218.9	10.69	21.478		
2,500.0	2,495.4	2,468.6	2,449.5	5.5	7.0	85.24	192.5	-175.7	246.0	234.8	11.19	21.977		
2,600.0	2,594.5	2,566.0	2,545.3	5.8	7.4	88.55	208.9	-181.7	263.3	251.6	11.71	22.480		
2,700.0	2,693.5	2,663.4	2,641.1	6.1	7.7	91.44	225.3	-187.6	281.4	269.1	12.25	22.976		
2,800.0	2,792.5	2,760.8	2,736.9	6.4	8.1	93.98	241.7	-193.5	300.1	287.3	12.79	23.458		
2,900.0	2,891.5	2,858.2	2,832.8	6.7	8.5	96.23	258.1	-199.4	319.3	306.0	13.35	23.920		
3,000.0	2,990.6	2,955.6	2,928.6	7.0	8.9	98.22	274.5	-205.4	339.0	325.1	13.91	24.362		
3,100.0	3,089.6	3,053.0	3,024.4	7.3	9.3	100.00	290.9	-211.3	359.0	344.5	14.49	24.782		
3,200.0	3,188.6	3,150.4	3,120.2	7.6	9.6	101.59	307.4	-217.2	379.3	364.2	15.06	25.180		
3,300.0	3,287.6	3,247.8	3,216.0	8.0	10.0	103.01	323.8	-223.1	399.9	384.2	15.65	25.557		
3,400.0	3,386.6	3,345.2	3,311.9	8.3	10.4	104.30	340.2	-229.1	420.7	404.4	16.23	25.913		
3,500.0	3,485.7	3,442.6	3,407.7	8.6	10.8	105.47	356.6	-235.0	441.6	424.8	16.82	26.251		
3,600.0	3,584.7	3,540.0	3,503.5	8.9	11.2	106.53	373.0	-240.9	462.7	445.3	17.42	26.570		
3,700.0	3,683.7	3,637.3	3,599.3	9.3	11.6	107.50	389.4	-246.9	484.0	466.0	18.01	26.872		
3,800.0	3,782.7	3,734.7	3,695.1	9.6	11.9	108.39	405.8	-252.8	505.4	486.8	18.61	27.158		
3,900.0	3,881.7	3,832.1	3,791.0	9.9	12.3	109.21	422.2	-258.7	526.9	507.7	19.21	27.428		
4,000.0	3,980.8	3,929.5	3,886.8	10.3	12.7	109.96	438.7	-264.6	548.5	528.7	19.81	27.685		
4,100.0	4,079.8	4,026.9	3,982.6	10.6	13.1	110.65	455.1	-270.6	570.1	549.7	20.41	27.929		
4,200.0	4,178.8	4,124.3	4,078.4	10.9	13.5	111.30	471.5	-276.5	591.9	570.9	21.02	28.161		
4,300.0	4,277.8	4,221.7	4,174.3	11.3	13.9	111.90	487.9	-282.4	613.7	592.1	21.62	28.381		
4,400.0	4,376.9	4,319.1	4,270.1	11.6	14.3	112.46	504.3	-288.3	635.6	613.4	22.23	28.590		
4,500.0	4,475.9	4,416.5	4,365.9	11.9	14.6	112.98	520.7	-294.3	657.5	634.7	22.84	28.790		
4,600.0	4,574.9	4,513.9	4,461.7	12.3	15.0	113.46	537.1	-300.2	679.5	656.0	23.45	28.980		
4,700.0	4,673.9	4,611.3	4,557.5	12.6	15.4	113.92	553.5	-306.1	701.5	677.4	24.06	29.161		
4,800.0	4,773.1	4,708.8	4,653.5	12.9	15.8	114.58	570.0	-312.1	723.2	698.5	24.67	29.319		
4,900.0	4,872.6	4,806.7	4,749.8	13.1	16.2	115.05	586.5	-318.0	743.5	718.3	25.21	29.489		
5,000.0	4,972.4	4,904.9	4,846.4	13.3	16.6	115.25	603.0	-324.0	762.4	736.7	25.72	29.637		

CC - Min centre to center distance or convergent point, SF - min separation factor, ES - min ellipse separation

Company:	Synergy Resources	Local Co-ordinate Reference:	Well SRC Union 12-5CHZ
Project:	SEC.5-T2N-R68W	TVD Reference:	WELL @ 4978.5ft (Ensign 131 RKB - 13.5')
Reference Site:	SRC Union Pad Sec.5-T2N-R68W	MD Reference:	WELL @ 4978.5ft (Ensign 131 RKB - 13.5')
Site Error:	0.0ft	North Reference:	True
Reference Well:	SRC Union 12-5CHZ	Survey Calculation Method:	Minimum Curvature
Well Error:	0.0ft	Output errors are at	2.00 sigma
Reference Wellbore	Wellbore #1	Database:	Landmark
Reference Design:	Plan #3 (1-2-14)	Offset TVD Reference:	Offset Datum

Offset Design												Offset Site Error:	0.0 ft
Survey Program: 0-MWD												Offset Well Error:	0.0 ft
Reference		Offset		Semi Major Axis			Distance						
Measured Depth (ft)	Vertical Depth (ft)	Measured Depth (ft)	Vertical Depth (ft)	Reference (ft)	Offset (ft)	Highside Toolface (°)	Offset Wellbore Centre +N/-S (ft)	+E/-W (ft)	Between Centres (ft)	Between Ellipses (ft)	Minimum Separation (ft)	Separation Factor	Warning
5,100.0	5,072.4	5,003.3	4,943.1	13.5	17.0	115.20	619.6	-330.0	779.8	753.6	26.20	29.767	
5,200.0	5,172.4	5,101.6	5,039.9	13.7	17.4	4.38	636.2	-336.0	796.2	767.8	28.39	28.050	
5,300.0	5,272.4	5,200.0	5,136.7	13.8	17.8	3.87	652.7	-341.9	812.6	783.7	28.97	28.056	
5,400.0	5,372.4	5,298.4	5,233.5	14.0	18.1	3.37	669.3	-347.9	829.1	799.6	29.55	28.061	
5,500.0	5,472.4	5,396.8	5,330.3	14.2	18.5	2.89	685.9	-353.9	845.6	815.5	30.13	28.067	
5,600.0	5,572.4	5,495.2	5,427.1	14.4	18.9	2.43	702.5	-359.9	862.2	831.5	30.72	28.072	
5,700.0	5,672.4	5,608.6	5,538.8	14.5	19.4	1.94	721.2	-366.6	878.6	847.2	31.33	28.039	
5,800.0	5,772.4	5,747.7	5,676.5	14.7	19.7	1.48	739.1	-373.1	891.3	859.4	31.91	27.933	
5,900.0	5,872.4	5,888.3	5,816.6	14.9	20.0	1.19	750.8	-377.3	899.6	867.2	32.42	27.746	
6,000.0	5,972.4	6,029.8	5,958.0	15.1	20.3	1.06	756.0	-379.2	903.3	870.4	32.86	27.492	
6,100.0	6,072.4	6,142.2	6,070.4	15.3	20.4	1.06	756.3	-379.3	903.5	870.2	33.21	27.203	
6,200.0	6,172.4	6,242.2	6,170.4	15.4	20.5	1.06	756.3	-379.3	903.5	869.9	33.56	26.921	
6,300.0	6,272.4	6,342.2	6,270.4	15.6	20.7	1.06	756.3	-379.3	903.5	869.5	33.91	26.644	
6,400.0	6,372.4	6,442.2	6,370.4	15.8	20.8	1.06	756.3	-379.3	903.5	869.2	34.26	26.370	
6,428.4	6,400.8	6,470.6	6,398.7	15.8	20.9	-89.86	756.3	-379.2	903.5	871.8	31.67	28.528	
6,500.0	6,472.1	6,541.9	6,469.8	15.9	21.0	-89.85	756.2	-374.2	903.5	871.6	31.87	28.351	
6,600.0	6,570.2	6,641.5	6,567.6	16.0	21.0	-89.88	755.9	-355.4	903.5	871.5	32.00	28.231	
6,700.0	6,664.6	6,741.3	6,661.9	16.0	21.0	-89.90	755.4	-323.1	903.5	871.4	32.05	28.193	
6,800.0	6,753.6	6,841.0	6,750.9	16.0	21.0	-89.93	754.8	-278.1	903.5	871.4	32.08	28.162	
6,900.0	6,835.3	6,940.9	6,832.8	16.0	21.0	-89.95	753.9	-221.2	903.5	871.3	32.23	28.034	
7,000.0	6,908.3	7,040.8	6,906.0	16.1	20.9	-89.98	752.8	-153.3	903.5	870.9	32.65	27.674	
7,100.0	6,971.1	7,140.8	6,969.1	16.5	20.9	-90.01	751.6	-75.9	903.5	870.0	33.51	26.962	
7,200.0	7,022.4	7,240.8	7,020.9	17.1	20.9	-90.04	750.3	9.6	903.6	868.6	34.96	25.842	
7,300.0	7,061.3	7,340.9	7,060.2	18.1	21.0	-90.07	748.9	101.5	903.6	866.5	37.08	24.371	
7,400.0	7,087.0	7,441.1	7,086.4	19.5	21.6	-90.09	747.4	198.1	903.6	863.8	39.83	22.688	
7,500.0	7,099.1	7,541.3	7,098.9	21.1	22.9	-90.12	745.9	297.4	903.6	860.5	43.11	20.962	
7,600.0	7,100.0	7,641.4	7,100.0	23.0	24.6	-90.13	744.4	397.5	903.7	856.9	46.80	19.309	
7,700.0	7,100.0	7,741.4	7,100.0	25.0	26.6	-90.13	742.9	497.5	903.7	852.9	50.82	17.782	
7,800.0	7,100.0	7,841.4	7,100.0	27.1	28.7	-90.13	741.3	597.5	903.7	848.6	55.12	16.396	
7,900.0	7,100.0	7,941.4	7,100.0	29.4	30.9	-90.13	739.8	697.5	903.7	844.1	59.64	15.154	
8,000.0	7,100.0	8,041.4	7,100.0	31.8	33.2	-90.13	738.3	797.5	903.8	839.4	64.33	14.049	
8,100.0	7,100.0	8,141.4	7,100.0	34.2	35.6	-90.13	736.7	897.5	903.8	834.6	69.16	13.068	
8,200.0	7,100.0	8,241.4	7,100.0	36.7	38.0	-90.13	735.2	997.4	903.8	829.7	74.10	12.197	
8,300.0	7,100.0	8,341.4	7,100.0	39.2	40.5	-90.13	733.7	1,097.4	903.8	824.7	79.13	11.422	
8,400.0	7,100.0	8,441.4	7,100.0	41.7	43.0	-90.13	732.1	1,197.4	903.9	819.6	84.24	10.730	
8,500.0	7,100.0	8,541.4	7,100.0	44.3	45.6	-90.13	730.6	1,297.4	903.9	814.5	89.40	10.110	
8,600.0	7,100.0	8,641.4	7,100.0	46.9	48.2	-90.13	729.1	1,397.4	903.9	809.3	94.62	9.553	
8,700.0	7,100.0	8,741.4	7,100.0	49.6	50.8	-90.13	727.5	1,497.4	904.0	804.1	99.88	9.050	
8,800.0	7,100.0	8,841.4	7,100.0	52.2	53.4	-90.13	726.0	1,597.4	904.0	798.8	105.18	8.594	
8,900.0	7,100.0	8,941.4	7,100.0	54.9	56.1	-90.13	724.4	1,697.4	904.0	793.5	110.51	8.180	
9,000.0	7,100.0	9,041.4	7,100.0	57.6	58.7	-90.13	722.9	1,797.3	904.0	788.2	115.87	7.802	
9,100.0	7,100.0	9,141.4	7,100.0	60.3	61.4	-90.13	721.4	1,897.3	904.1	782.8	121.25	7.456	
9,200.0	7,100.0	9,241.4	7,100.0	63.0	64.1	-90.13	719.8	1,997.3	904.1	777.4	126.65	7.138	
9,300.0	7,100.0	9,341.4	7,100.0	65.7	66.8	-90.13	718.3	2,097.3	904.1	772.0	132.07	6.846	
9,400.0	7,100.0	9,441.4	7,100.0	68.4	69.5	-90.13	716.8	2,197.3	904.1	766.6	137.50	6.575	
9,500.0	7,100.0	9,541.4	7,100.0	71.1	72.2	-90.13	715.2	2,297.3	904.2	761.2	142.95	6.325	
9,600.0	7,100.0	9,641.4	7,100.0	73.9	74.9	-90.13	713.7	2,397.3	904.2	755.8	148.41	6.092	
9,700.0	7,100.0	9,741.4	7,100.0	76.6	77.6	-90.13	712.2	2,497.3	904.2	750.3	153.88	5.876	
9,800.0	7,100.0	9,841.4	7,100.0	79.3	80.3	-90.13	710.6	2,597.3	904.2	744.9	159.37	5.674	
9,900.0	7,100.0	9,941.4	7,100.0	82.1	83.1	-90.13	709.1	2,697.2	904.3	739.4	164.86	5.485	
10,000.0	7,100.0	10,041.4	7,100.0	84.8	85.8	-90.13	707.6	2,797.2	904.3	733.9	170.36	5.308	
10,100.0	7,100.0	10,141.4	7,100.0	87.6	88.6	-90.13	706.0	2,897.2	904.3	728.5	175.86	5.142	

CC - Min centre to center distance or convergent point, SF - min separation factor, ES - min ellipse separation

Company:	Synergy Resources	Local Co-ordinate Reference:	Well SRC Union 12-5CHZ
Project:	SEC.5-T2N-R68W	TVD Reference:	WELL @ 4978.5ft (Ensign 131 RKB - 13.5')
Reference Site:	SRC Union Pad Sec.5-T2N-R68W	MD Reference:	WELL @ 4978.5ft (Ensign 131 RKB - 13.5')
Site Error:	0.0ft	North Reference:	True
Reference Well:	SRC Union 12-5CHZ	Survey Calculation Method:	Minimum Curvature
Well Error:	0.0ft	Output errors are at	2.00 sigma
Reference Wellbore	Wellbore #1	Database:	Landmark
Reference Design:	Plan #3 (1-2-14)	Offset TVD Reference:	Offset Datum

Offset Design SRC Union Pad Sec.5-T2N-R68W - SRC Union A-5CHZ - Wellbore #1 - Plan #3 (1-2-14)												Offset Site Error:	0.0 ft
Survey Program: 0-MWD												Offset Well Error:	0.0 ft
Reference		Offset		Semi Major Axis			Distance						
Measured Depth (ft)	Vertical Depth (ft)	Measured Depth (ft)	Vertical Depth (ft)	Reference (ft)	Offset (ft)	Highside Toolface (°)	Offset Wellbore Centre +N/-S (ft)	+E/-W (ft)	Between Centres (ft)	Between Ellipses (ft)	Minimum Separation (ft)	Separation Factor	Warning
10,200.0	7,100.0	10,241.4	7,100.0	90.4	91.3	-90.13	704.5	2,997.2	904.3	723.0	181.38	4.986	
10,300.0	7,100.0	10,341.4	7,100.0	93.1	94.1	-90.13	703.0	3,097.2	904.4	717.5	186.90	4.839	
10,400.0	7,100.0	10,441.4	7,100.0	95.9	96.8	-90.13	701.4	3,197.2	904.4	712.0	192.42	4.700	
10,500.0	7,100.0	10,541.4	7,100.0	98.6	99.6	-90.13	699.9	3,297.2	904.4	706.5	197.95	4.569	
10,600.0	7,100.0	10,641.4	7,100.0	101.4	102.3	-90.13	698.4	3,397.2	904.5	701.0	203.49	4.445	
10,700.0	7,100.0	10,741.4	7,100.0	104.2	105.1	-90.13	696.8	3,497.1	904.5	695.5	209.03	4.327	
10,800.0	7,100.0	10,841.4	7,100.0	107.0	107.9	-90.13	695.3	3,597.1	904.5	689.9	214.57	4.215	
10,900.0	7,100.0	10,941.4	7,100.0	109.7	110.6	-90.13	693.8	3,697.1	904.5	684.4	220.12	4.109	
11,000.0	7,100.0	11,041.4	7,100.0	112.5	113.4	-90.13	692.2	3,797.1	904.6	678.9	225.67	4.008	
11,100.0	7,100.0	11,141.4	7,100.0	115.3	116.2	-90.13	690.7	3,897.1	904.6	673.4	231.22	3.912	
11,200.0	7,100.0	11,241.4	7,100.0	118.1	118.9	-90.13	689.2	3,997.1	904.6	667.8	236.78	3.821	
11,300.0	7,100.0	11,341.4	7,100.0	120.9	121.7	-90.13	687.6	4,097.1	904.6	662.3	242.34	3.733	
11,400.0	7,100.0	11,441.4	7,100.0	123.6	124.5	-90.13	686.1	4,197.1	904.7	656.8	247.90	3.649	
11,500.0	7,100.0	11,541.4	7,100.0	126.4	127.3	-90.13	684.6	4,297.1	904.7	651.2	253.46	3.569	
11,600.0	7,100.0	11,641.4	7,100.0	129.2	130.0	-90.13	683.0	4,397.0	904.7	645.7	259.03	3.493	
11,639.2	7,100.0	11,680.6	7,100.0	130.3	131.1	-90.13	682.4	4,436.2	904.7	643.5	261.21	3.464 SF	

Company:	Synergy Resources	Local Co-ordinate Reference:	Well SRC Union 12-5CHZ
Project:	SEC.5-T2N-R68W	TVD Reference:	WELL @ 4978.5ft (Ensign 131 RKB - 13.5')
Reference Site:	SRC Union Pad Sec.5-T2N-R68W	MD Reference:	WELL @ 4978.5ft (Ensign 131 RKB - 13.5')
Site Error:	0.0ft	North Reference:	True
Reference Well:	SRC Union 12-5CHZ	Survey Calculation Method:	Minimum Curvature
Well Error:	0.0ft	Output errors are at	2.00 sigma
Reference Wellbore	Wellbore #1	Database:	Landmark
Reference Design:	Plan #3 (1-2-14)	Offset TVD Reference:	Offset Datum

Offset Design													Offset Site Error:	0.0 ft
Survey Program: 0-MWD													Offset Well Error:	0.0 ft
Reference		Offset		Semi Major Axis			Distance							Warning
Measured Depth (ft)	Vertical Depth (ft)	Measured Depth (ft)	Vertical Depth (ft)	Reference (ft)	Offset (ft)	Highside Toolface (°)	Offset Wellbore Centre +N/-S (ft)	+E/-W (ft)	Between Centres (ft)	Between Ellipses (ft)	Minimum Separation (ft)	Separation Factor		
0.0	0.0	0.0	0.0	0.0	0.0	-111.09	-28.8	-74.6	80.0					
100.0	100.0	98.0	98.0	0.1	0.1	-111.09	-28.8	-74.6	80.0	79.8	0.22	359.397		
200.0	200.0	198.0	198.0	0.3	0.3	-111.09	-28.8	-74.6	80.0	79.3	0.67	119.399		
300.0	300.0	298.0	298.0	0.6	0.6	-111.09	-28.8	-74.6	80.0	78.9	1.12	71.448		
400.0	400.0	398.0	398.0	0.8	0.8	-111.09	-28.8	-74.6	80.0	78.4	1.57	50.976		
500.0	500.0	498.0	498.0	1.0	1.0	-111.09	-28.8	-74.6	80.0	78.0	2.02	39.622		
600.0	600.0	598.0	598.0	1.2	1.2	-111.09	-28.8	-74.6	80.0	77.5	2.47	32.405		
700.0	700.0	698.0	698.0	1.5	1.5	-111.09	-28.8	-74.6	80.0	77.1	2.92	27.412		
800.0	800.0	798.0	798.0	1.7	1.7	-111.09	-28.8	-74.6	80.0	76.6	3.37	23.752		
900.0	900.0	898.0	898.0	1.9	1.9	-111.09	-28.8	-74.6	80.0	76.2	3.82	20.955		
1,000.0	1,000.0	998.0	998.0	2.1	2.1	-111.09	-28.8	-74.6	80.0	75.7	4.27	18.747 CC		
1,100.0	1,100.0	1,097.8	1,097.8	2.4	2.4	-110.50	-28.1	-75.0	80.1	75.4	4.71	16.994 ES		
1,200.0	1,200.0	1,197.5	1,197.5	2.6	2.6	-108.69	-25.8	-76.3	80.6	75.4	5.16	15.611		
1,300.0	1,300.0	1,297.1	1,297.0	2.8	2.8	-105.73	-22.1	-78.4	81.5	75.9	5.61	14.530		
1,400.0	1,400.0	1,396.5	1,396.2	3.0	3.0	-101.70	-16.9	-81.4	83.2	77.1	6.06	13.726		
1,500.0	1,500.0	1,495.7	1,495.1	3.3	3.3	-96.80	-10.2	-85.3	85.9	79.4	6.51	13.188		
1,600.0	1,600.0	1,594.6	1,593.5	3.5	3.5	19.25	-2.0	-89.9	89.2	82.3	6.94	12.849		
1,700.0	1,700.0	1,693.2	1,691.5	3.7	3.7	25.77	7.6	-95.4	92.8	85.4	7.37	12.594		
1,800.0	1,799.9	1,791.3	1,788.8	3.9	4.0	32.98	18.6	-101.7	97.1	89.4	7.79	12.463		
1,900.0	1,899.7	1,889.4	1,885.9	4.1	4.3	40.64	30.9	-108.8	102.8	94.6	8.23	12.502		
2,000.0	1,999.4	1,988.2	1,983.6	4.3	4.6	48.19	43.7	-116.1	109.4	100.7	8.66	12.626		
2,100.0	2,098.9	2,086.9	2,081.1	4.5	4.9	55.47	56.4	-123.3	116.6	107.5	9.10	12.809		
2,200.0	2,198.3	2,185.4	2,178.6	4.7	5.2	62.48	69.1	-130.6	124.7	115.2	9.56	13.048		
2,300.0	2,297.4	2,283.8	2,275.8	5.0	5.5	69.22	81.8	-137.8	133.9	123.9	10.04	13.343		
2,400.0	2,396.4	2,382.0	2,373.0	5.3	5.8	75.44	94.4	-145.1	144.6	134.0	10.54	13.717		
2,500.0	2,495.4	2,480.3	2,470.2	5.5	6.1	80.78	107.1	-152.3	156.7	145.6	11.06	14.169		
2,600.0	2,594.5	2,578.5	2,567.4	5.8	6.5	85.33	119.8	-159.6	170.0	158.4	11.59	14.662		
2,700.0	2,693.5	2,676.8	2,664.5	6.1	6.8	89.21	132.4	-166.8	184.2	172.0	12.14	15.171		
2,800.0	2,792.5	2,775.1	2,761.7	6.4	7.1	92.53	145.1	-174.1	199.1	186.4	12.70	15.681		
2,900.0	2,891.5	2,873.3	2,858.9	6.7	7.4	95.39	157.8	-181.3	214.6	201.3	13.26	16.181		
3,000.0	2,990.6	2,971.6	2,956.0	7.0	7.8	97.86	170.4	-188.5	230.5	216.7	13.83	16.666		
3,100.0	3,089.6	3,069.9	3,053.2	7.3	8.1	100.00	183.1	-195.8	246.9	232.4	14.41	17.131		
3,200.0	3,188.6	3,168.1	3,150.4	7.6	8.4	101.89	195.8	-203.0	263.5	248.5	14.99	17.576		
3,300.0	3,287.6	3,266.4	3,247.6	8.0	8.8	103.54	208.4	-210.3	280.3	264.7	15.57	17.999		
3,400.0	3,386.6	3,364.6	3,344.7	8.3	9.1	105.01	221.1	-217.5	297.4	281.2	16.16	18.401		
3,500.0	3,485.7	3,462.9	3,441.9	8.6	9.4	106.33	233.7	-224.8	314.6	297.8	16.75	18.781		
3,600.0	3,584.7	3,561.2	3,539.1	8.9	9.8	107.50	246.4	-232.0	332.0	314.6	17.34	19.142		
3,700.0	3,683.7	3,659.4	3,636.3	9.3	10.1	108.56	259.1	-239.3	349.5	331.5	17.94	19.483		
3,800.0	3,782.7	3,757.7	3,733.4	9.6	10.4	109.52	271.7	-246.5	367.1	348.5	18.53	19.807		
3,900.0	3,881.7	3,856.0	3,830.6	9.9	10.8	110.38	284.4	-253.7	384.7	365.6	19.13	20.113		
4,000.0	3,980.8	3,954.2	3,927.8	10.3	11.1	111.18	297.1	-261.0	402.5	382.8	19.73	20.404		
4,100.0	4,079.8	4,052.5	4,025.0	10.6	11.5	111.90	309.7	-268.2	420.4	400.0	20.33	20.679		
4,200.0	4,178.8	4,150.7	4,122.1	10.9	11.8	112.57	322.4	-275.5	438.2	417.3	20.93	20.941		
4,300.0	4,277.8	4,249.0	4,219.3	11.3	12.2	113.19	335.1	-282.7	456.2	434.7	21.53	21.189		
4,400.0	4,376.9	4,347.3	4,316.5	11.6	12.5	113.76	347.7	-290.0	474.2	452.1	22.13	21.425		
4,500.0	4,475.9	4,445.5	4,413.6	11.9	12.8	114.28	360.4	-297.2	492.2	469.5	22.74	21.650		
4,600.0	4,574.9	4,543.8	4,510.8	12.3	13.2	114.77	373.1	-304.5	510.3	487.0	23.34	21.864		
4,700.0	4,673.9	4,642.1	4,608.0	12.6	13.5	115.23	385.7	-311.7	528.4	504.5	23.95	22.067		
4,800.0	4,773.1	4,740.4	4,705.3	12.9	13.9	115.80	398.4	-319.0	546.2	521.6	24.54	22.254		
4,900.0	4,872.6	4,839.1	4,802.8	13.1	14.2	116.10	411.1	-326.2	562.5	537.4	25.07	22.432		
5,000.0	4,972.4	4,937.9	4,900.6	13.3	14.6	116.06	423.9	-333.5	577.3	551.7	25.57	22.573		
5,100.0	5,072.4	5,036.8	4,998.4	13.5	14.9	115.69	436.6	-340.8	590.6	564.5	26.04	22.683		

CC - Min centre to center distance or convergent point, SF - min separation factor, ES - min ellipse separation

SRC Union Pad Sec.5-T2N-R68W - SRC Union A-5NHZ - Wellbore #1 - Plan #3 (1-2-14)													Offset Site Error:	0.0 ft
Survey Program: 0-MWD													Offset Well Error:	0.0 ft
Reference		Offset		Semi Major Axis			Distance							Warning
Measured Depth (ft)	Vertical Depth (ft)	Measured Depth (ft)	Vertical Depth (ft)	Reference (ft)	Offset (ft)	Highside Toolface (°)	Offset Wellbore Centre +N/-S (ft)	+E/-W (ft)	Between Centres (ft)	Between Ellipses (ft)	Minimum Separation (ft)	Separation Factor		
5,200.0	5,172.4	5,135.7	5,096.2	13.7	15.3	4.59	449.4	-348.1	602.9	576.8	26.02	23.169		
5,300.0	5,272.4	5,234.6	5,194.0	13.8	15.6	3.81	462.1	-355.4	615.2	588.7	26.55	23.177		
5,400.0	5,372.4	5,333.5	5,291.8	14.0	15.9	3.07	474.9	-362.7	627.7	600.6	27.07	23.184		
5,500.0	5,472.4	5,436.0	5,393.1	14.2	16.3	2.33	488.0	-370.2	640.2	612.6	27.61	23.188		
5,600.0	5,572.4	5,558.8	5,515.0	14.4	16.6	1.63	500.9	-377.6	650.5	622.4	28.14	23.120		
5,700.0	5,672.4	5,682.7	5,638.6	14.5	16.9	1.19	509.3	-382.4	657.2	628.6	28.60	22.978		
5,800.0	5,772.4	5,807.3	5,763.0	14.7	17.1	1.00	513.0	-384.5	660.2	631.1	29.02	22.751		
5,900.0	5,872.4	5,914.6	5,870.4	14.9	17.2	0.99	513.2	-384.6	660.3	630.9	29.38	22.474		
6,000.0	5,972.4	6,014.6	5,970.4	15.1	17.4	0.99	513.2	-384.6	660.3	630.6	29.75	22.193		
6,100.0	6,072.4	6,114.6	6,070.4	15.3	17.6	0.99	513.2	-384.6	660.3	630.2	30.13	21.917		
6,200.0	6,172.4	6,214.6	6,170.4	15.4	17.7	0.99	513.2	-384.6	660.3	629.8	30.50	21.647		
6,300.0	6,272.4	6,314.6	6,270.4	15.6	17.9	0.99	513.2	-384.6	660.3	629.4	30.88	21.383		
6,365.4	6,337.8	6,380.0	6,335.8	15.7	18.0	0.99	513.2	-384.6	660.3	629.2	31.13	21.212		
6,400.0	6,372.4	6,414.6	6,370.3	15.8	18.1	0.99	513.2	-384.6	660.3	629.1	31.26	21.123		
6,500.0	6,472.1	6,514.3	6,469.7	15.9	18.2	-89.73	513.1	-377.2	660.3	628.8	31.52	20.951		
6,600.0	6,570.2	6,613.7	6,566.8	16.0	18.3	-89.56	512.8	-356.1	660.3	628.7	31.65	20.866		
6,700.0	6,664.6	6,712.9	6,659.8	16.0	18.3	-89.39	512.2	-322.0	660.4	628.7	31.69	20.841		
6,800.0	6,753.6	6,811.8	6,746.9	16.0	18.2	-89.24	511.5	-275.4	660.4	628.7	31.72	20.820		
6,900.0	6,835.3	6,910.4	6,826.7	16.0	18.2	-89.10	510.6	-217.5	660.4	628.5	31.87	20.723		
7,000.0	6,908.3	7,008.9	6,897.6	16.1	18.1	-88.98	509.5	-149.3	660.4	628.1	32.30	20.449		
7,100.0	6,971.1	7,107.2	6,958.4	16.5	18.1	-88.88	508.3	-72.1	660.4	627.2	33.17	19.909		
7,200.0	7,022.4	7,205.4	7,008.0	17.1	18.0	-88.80	507.0	12.5	660.4	625.8	34.64	19.068		
7,300.0	7,061.3	7,303.4	7,045.6	18.1	18.7	-88.74	505.6	103.0	660.4	623.7	36.76	17.968		
7,400.0	7,087.0	7,401.4	7,070.4	19.5	20.1	-88.70	504.1	197.7	660.4	620.9	39.50	16.718		
7,500.0	7,099.1	7,499.3	7,082.1	21.1	21.8	-88.70	502.6	294.8	660.4	617.7	42.77	15.440		
7,600.0	7,100.0	7,598.6	7,083.0	23.0	23.7	-88.70	501.0	394.0	660.4	614.0	46.45	14.218		
7,700.0	7,100.0	7,698.6	7,083.0	25.0	25.7	-88.70	499.4	494.0	660.4	609.9	50.49	13.081		
7,800.0	7,100.0	7,798.6	7,083.0	27.1	27.9	-88.70	497.9	594.0	660.4	605.6	54.80	12.050		
7,900.0	7,100.0	7,898.6	7,083.0	29.4	30.2	-88.70	496.3	694.0	660.4	601.1	59.34	11.129		
8,000.0	7,100.0	7,998.6	7,083.0	31.8	32.5	-88.70	494.7	794.0	660.4	596.3	64.04	10.312		
8,100.0	7,100.0	8,098.6	7,083.0	34.2	34.9	-88.70	493.2	894.0	660.4	591.5	68.88	9.587		
8,200.0	7,100.0	8,198.6	7,083.0	36.7	37.4	-88.70	491.6	993.9	660.4	586.5	73.84	8.944		
8,300.0	7,100.0	8,298.6	7,083.0	39.2	39.9	-88.70	490.0	1,093.9	660.4	581.5	78.88	8.372		
8,400.0	7,100.0	8,398.6	7,083.0	41.7	42.5	-88.70	488.4	1,193.9	660.3	576.4	83.99	7.862		
8,500.0	7,100.0	8,498.6	7,083.0	44.3	45.0	-88.70	486.9	1,293.9	660.3	571.2	89.16	7.406		
8,600.0	7,100.0	8,598.6	7,083.0	46.9	47.7	-88.70	485.3	1,393.9	660.3	565.9	94.39	6.996		
8,700.0	7,100.0	8,698.6	7,083.0	49.6	50.3	-88.70	483.7	1,493.9	660.3	560.7	99.66	6.626		
8,800.0	7,100.0	8,798.6	7,083.0	52.2	52.9	-88.70	482.2	1,593.9	660.3	555.3	104.96	6.291		
8,900.0	7,100.0	8,898.6	7,083.0	54.9	55.6	-88.70	480.6	1,693.9	660.3	550.0	110.29	5.987		
9,000.0	7,100.0	8,998.6	7,083.0	57.6	58.3	-88.70	479.0	1,793.8	660.3	544.6	115.65	5.709		
9,100.0	7,100.0	9,098.6	7,083.0	60.3	60.9	-88.70	477.5	1,893.8	660.3	539.2	121.04	5.455		
9,200.0	7,100.0	9,198.6	7,083.0	63.0	63.6	-88.70	475.9	1,993.8	660.3	533.8	126.44	5.222		
9,300.0	7,100.0	9,298.6	7,083.0	65.7	66.3	-88.70	474.3	2,093.8	660.3	528.4	131.86	5.007		
9,400.0	7,100.0	9,398.6	7,083.0	68.4	69.1	-88.70	472.8	2,193.8	660.2	523.0	137.30	4.809		
9,500.0	7,100.0	9,498.6	7,083.0	71.1	71.8	-88.70	471.2	2,293.8	660.2	517.5	142.75	4.625		
9,600.0	7,100.0	9,598.6	7,083.0	73.9	74.5	-88.70	469.6	2,393.8	660.2	512.0	148.21	4.455		
9,700.0	7,100.0	9,698.6	7,083.0	76.6	77.2	-88.70	468.0	2,493.8	660.2	506.5	153.69	4.296		
9,800.0	7,100.0	9,798.6	7,083.0	79.3	80.0	-88.70	466.5	2,593.7	660.2	501.0	159.17	4.148		
9,900.0	7,100.0	9,898.6	7,083.0	82.1	82.7	-88.70	464.9	2,693.7	660.2	495.5	164.66	4.009		
10,000.0	7,100.0	9,998.6	7,083.0	84.8	85.5	-88.70	463.3	2,793.7	660.2	490.0	170.16	3.880		
10,100.0	7,100.0	10,098.6	7,083.0	87.6	88.2	-88.70	461.8	2,893.7	660.2	484.5	175.67	3.758		
10,200.0	7,100.0	10,198.6	7,083.0	90.4	91.0	-88.70	460.2	2,993.7	660.2	479.0	181.19	3.644		

Company:	Synergy Resources	Local Co-ordinate Reference:	Well SRC Union 12-5CHZ
Project:	SEC.5-T2N-R68W	TVD Reference:	WELL @ 4978.5ft (Ensign 131 RKB - 13.5')
Reference Site:	SRC Union Pad Sec.5-T2N-R68W	MD Reference:	WELL @ 4978.5ft (Ensign 131 RKB - 13.5')
Site Error:	0.0ft	North Reference:	True
Reference Well:	SRC Union 12-5CHZ	Survey Calculation Method:	Minimum Curvature
Well Error:	0.0ft	Output errors are at	2.00 sigma
Reference Wellbore	Wellbore #1	Database:	Landmark
Reference Design:	Plan #3 (1-2-14)	Offset TVD Reference:	Offset Datum

Offset Design SRC Union Pad Sec.5-T2N-R68W - SRC Union A-5NHZ - Wellbore #1 - Plan #3 (1-2-14)												Offset Site Error:	0.0 ft
Survey Program: 0-MWD												Offset Well Error:	0.0 ft
Reference		Offset		Semi Major Axis			Distance						
Measured Depth (ft)	Vertical Depth (ft)	Measured Depth (ft)	Vertical Depth (ft)	Reference (ft)	Offset (ft)	Highside Toolface (°)	Offset Wellbore Centre +N/-S (ft)	+E/-W (ft)	Between Centres (ft)	Between Ellipses (ft)	Minimum Separation (ft)	Separation Factor	Warning
10,300.0	7,100.0	10,298.6	7,083.0	93.1	93.7	-88.70	458.6	3,093.7	660.2	473.5	186.71	3.536	
10,400.0	7,100.0	10,398.6	7,083.0	95.9	96.5	-88.70	457.1	3,193.7	660.2	467.9	192.23	3.434	
10,500.0	7,100.0	10,498.6	7,083.0	98.6	99.3	-88.70	455.5	3,293.7	660.1	462.4	197.76	3.338	
10,600.0	7,100.0	10,598.6	7,083.0	101.4	102.0	-88.70	453.9	3,393.6	660.1	456.8	203.30	3.247	
10,700.0	7,100.0	10,698.6	7,083.0	104.2	104.8	-88.70	452.3	3,493.6	660.1	451.3	208.84	3.161	
10,800.0	7,100.0	10,798.6	7,083.0	107.0	107.6	-88.70	450.8	3,593.6	660.1	445.7	214.38	3.079	
10,900.0	7,100.0	10,898.6	7,083.0	109.7	110.3	-88.70	449.2	3,693.6	660.1	440.2	219.93	3.001	
11,000.0	7,100.0	10,998.6	7,083.0	112.5	113.1	-88.70	447.6	3,793.6	660.1	434.6	225.48	2.928	
11,100.0	7,100.0	11,098.6	7,083.0	115.3	115.9	-88.70	446.1	3,893.6	660.1	429.1	231.04	2.857	
11,200.0	7,100.0	11,198.6	7,083.0	118.1	118.7	-88.70	444.5	3,993.6	660.1	423.5	236.59	2.790	
11,300.0	7,100.0	11,298.6	7,083.0	120.9	121.4	-88.70	442.9	4,093.6	660.1	417.9	242.15	2.726	
11,400.0	7,100.0	11,398.6	7,083.0	123.6	124.2	-88.70	441.4	4,193.5	660.1	412.3	247.71	2.665	
11,500.0	7,100.0	11,498.6	7,083.0	126.4	127.0	-88.70	439.8	4,293.5	660.1	406.8	253.28	2.606	
11,600.0	7,100.0	11,598.6	7,083.0	129.2	129.8	-88.70	438.2	4,393.5	660.0	401.2	258.85	2.550	
11,639.2	7,100.0	11,637.7	7,083.0	130.3	130.9	-88.70	437.6	4,432.7	660.0	399.0	261.03	2.529 SF	

SRC Union Pad Sec.5-T2N-R68W - SRC Union C-5CHZ - Wellbore #1 - Plan #3 (1-2-14)													Offset Site Error:	0.0 ft
Survey Program: 0-MWD													Offset Well Error:	0.0 ft
Reference		Offset		Semi Major Axis			Distance							
Measured Depth	Vertical Depth	Measured Depth	Vertical Depth	Reference	Offset	Highside Toolface	Offset Wellbore Centre		Between Centres	Between Ellipses	Minimum Separation	Separation Factor	Warning	
(ft)	(ft)	(ft)	(ft)	(ft)	(ft)	(°)	+N/-S (ft)	+E/-W (ft)	(ft)	(ft)	(ft)			
0.0	0.0	0.0	0.0	0.0	0.0	68.73	7.3	18.7	20.1					
100.0	100.0	100.0	100.0	0.1	0.1	68.73	7.3	18.7	20.1	19.9	0.22	89.397		
200.0	200.0	200.0	200.0	0.3	0.3	68.73	7.3	18.7	20.1	19.4	0.67	29.799		
300.0	300.0	300.0	300.0	0.6	0.6	68.73	7.3	18.7	20.1	19.0	1.12	17.879		
400.0	400.0	400.0	400.0	0.8	0.8	68.73	7.3	18.7	20.1	18.5	1.57	12.771		
500.0	500.0	500.0	500.0	1.0	1.0	68.73	7.3	18.7	20.1	18.1	2.02	9.933		
600.0	600.0	600.0	600.0	1.2	1.2	68.73	7.3	18.7	20.1	17.6	2.47	8.127		
700.0	700.0	700.0	700.0	1.5	1.5	68.73	7.3	18.7	20.1	17.2	2.92	6.877		
800.0	800.0	800.0	800.0	1.7	1.7	68.73	7.3	18.7	20.1	16.7	3.37	5.960		
900.0	900.0	900.0	900.0	1.9	1.9	68.73	7.3	18.7	20.1	16.3	3.82	5.259		
1,000.0	1,000.0	1,000.0	1,000.0	2.1	2.1	68.73	7.3	18.7	20.1	15.8	4.27	4.705		
1,100.0	1,100.0	1,100.0	1,100.0	2.4	2.4	68.73	7.3	18.7	20.1	15.4	4.72	4.257		
1,200.0	1,200.0	1,200.0	1,200.0	2.6	2.6	68.73	7.3	18.7	20.1	14.9	5.17	3.887		
1,300.0	1,300.0	1,300.0	1,300.0	2.8	2.8	68.73	7.3	18.7	20.1	14.5	5.62	3.576		
1,400.0	1,400.0	1,400.0	1,400.0	3.0	3.0	68.73	7.3	18.7	20.1	14.0	6.07	3.311		
1,500.0	1,500.0	1,500.0	1,500.0	3.3	3.3	68.73	7.3	18.7	20.1	13.6	6.52	3.083 CC, ES		
1,600.0	1,600.0	1,600.0	1,600.0	3.5	3.5	179.13	7.3	18.7	21.0	14.0	6.95	3.018		
1,700.0	1,700.0	1,700.0	1,700.0	3.7	3.7	179.23	7.3	18.7	23.6	16.2	7.36	3.204		
1,800.0	1,799.9	1,799.9	1,799.9	3.9	3.9	179.35	7.3	18.7	27.9	20.2	7.77	3.595		
1,900.0	1,899.7	1,900.0	1,900.0	4.1	4.2	178.23	7.8	18.0	33.6	25.4	8.18	4.103		
2,000.0	1,999.4	2,000.1	2,000.1	4.3	4.4	175.41	9.3	15.9	40.0	31.5	8.59	4.663		
2,100.0	2,098.9	2,100.1	2,100.0	4.5	4.6	171.76	11.8	12.3	47.5	38.5	9.00	5.281		
2,200.0	2,198.3	2,200.1	2,199.8	4.7	4.8	167.81	15.3	7.3	56.1	46.7	9.41	5.965		
2,300.0	2,297.4	2,299.9	2,299.2	5.0	5.0	163.87	19.8	0.9	66.1	56.2	9.84	6.715		
2,400.0	2,396.4	2,399.6	2,398.5	5.3	5.3	159.96	25.3	-6.9	76.6	66.3	10.30	7.440		
2,500.0	2,495.4	2,499.2	2,497.4	5.5	5.5	155.89	31.7	-16.2	87.1	76.3	10.78	8.080		
2,600.0	2,594.5	2,598.6	2,596.0	5.8	5.8	151.70	39.2	-26.8	97.7	86.4	11.28	8.656		
2,700.0	2,693.5	2,697.8	2,694.2	6.1	6.0	147.80	47.2	-38.2	108.6	96.8	11.81	9.196		
2,800.0	2,792.5	2,796.9	2,792.4	6.4	6.3	144.62	55.2	-49.7	120.0	107.6	12.36	9.710		
2,900.0	2,891.5	2,896.1	2,890.5	6.7	6.6	141.99	63.2	-61.1	131.7	118.8	12.92	10.195		
3,000.0	2,990.6	2,995.2	2,988.7	7.0	6.9	139.80	71.2	-72.6	143.6	130.1	13.48	10.648		
3,100.0	3,089.6	3,094.4	3,086.9	7.3	7.2	137.94	79.2	-84.0	155.6	141.6	14.06	11.071		
3,200.0	3,188.6	3,193.5	3,185.0	7.6	7.5	136.35	87.2	-95.4	167.9	153.2	14.64	11.464		
3,300.0	3,287.6	3,292.7	3,283.2	8.0	7.8	134.97	95.2	-106.9	180.2	165.0	15.23	11.830		
3,400.0	3,386.6	3,391.8	3,381.3	8.3	8.1	133.78	103.3	-118.3	192.6	176.8	15.83	12.169		
3,500.0	3,485.7	3,491.0	3,479.5	8.6	8.4	132.72	111.3	-129.8	205.1	188.7	16.43	12.485		
3,600.0	3,584.7	3,590.1	3,577.7	8.9	8.7	131.79	119.3	-141.2	217.6	200.6	17.03	12.779		
3,700.0	3,683.7	3,689.3	3,675.8	9.3	9.0	130.96	127.3	-152.7	230.2	212.6	17.64	13.052		
3,800.0	3,782.7	3,788.4	3,774.0	9.6	9.3	130.22	135.3	-164.1	242.9	224.6	18.25	13.307		
3,900.0	3,881.7	3,887.6	3,872.2	9.9	9.6	129.55	143.3	-175.5	255.5	236.7	18.86	13.546		
4,000.0	3,980.8	3,986.7	3,970.3	10.3	9.9	128.94	151.3	-187.0	268.2	248.8	19.48	13.769		
4,100.0	4,079.8	4,085.9	4,068.5	10.6	10.2	128.39	159.3	-198.4	281.0	260.9	20.10	13.978		
4,200.0	4,178.8	4,185.0	4,166.6	10.9	10.6	127.89	167.4	-209.9	293.7	273.0	20.72	14.174		
4,300.0	4,277.8	4,284.2	4,264.8	11.3	10.9	127.42	175.4	-221.3	306.5	285.2	21.35	14.358		
4,400.0	4,376.9	4,383.3	4,363.0	11.6	11.2	127.00	183.4	-232.7	319.3	297.3	21.97	14.531		
4,500.0	4,475.9	4,482.5	4,461.1	11.9	11.5	126.61	191.4	-244.2	332.1	309.5	22.60	14.695		
4,600.0	4,574.9	4,581.7	4,559.3	12.3	11.9	126.24	199.4	-255.6	345.0	321.7	23.23	14.849		
4,700.0	4,673.9	4,680.8	4,657.5	12.6	12.2	125.91	207.4	-267.1	357.8	333.9	23.86	14.994		
4,800.0	4,773.1	4,780.0	4,755.7	12.9	12.5	125.62	215.4	-278.5	370.1	345.6	24.49	15.115		
4,900.0	4,872.6	4,879.3	4,854.0	13.1	12.9	124.97	223.5	-290.0	380.5	355.4	25.06	15.184		
5,000.0	4,972.4	4,978.6	4,952.3	13.3	13.2	123.91	231.5	-301.4	389.0	363.4	25.61	15.190		
5,100.0	5,072.4	5,077.8	5,050.5	13.5	13.5	122.46	239.5	-312.9	395.9	369.7	26.14	15.145		

COMPASS 2003.21 Build 46

Company:	Synergy Resources	Local Co-ordinate Reference:	Well SRC Union 12-5CHZ
Project:	SEC.5-T2N-R68W	TVD Reference:	WELL @ 4978.5ft (Ensign 131 RKB - 13.5')
Reference Site:	SRC Union Pad Sec.5-T2N-R68W	MD Reference:	WELL @ 4978.5ft (Ensign 131 RKB - 13.5')
Site Error:	0.0ft	North Reference:	True
Reference Well:	SRC Union 12-5CHZ	Survey Calculation Method:	Minimum Curvature
Well Error:	0.0ft	Output errors are at	2.00 sigma
Reference Wellbore	Wellbore #1	Database:	Landmark
Reference Design:	Plan #3 (1-2-14)	Offset TVD Reference:	Offset Datum

Offset Design												Offset Site Error:	0.0 ft
Survey Program: 0-MWD												Offset Well Error:	0.0 ft
Reference		Offset		Semi Major Axis			Distance						Warning
Measured Depth (ft)	Vertical Depth (ft)	Measured Depth (ft)	Vertical Depth (ft)	Reference (ft)	Offset (ft)	Highside Toolface (°)	Offset Wellbore Centre +N/-S (ft)	+E/-W (ft)	Between Centres (ft)	Between Ellipses (ft)	Minimum Separation (ft)	Separation Factor	
5,200.0	5,172.4	5,176.8	5,148.5	13.7	13.8	10.30	247.5	-324.3	401.7	377.7	24.01	16.731	
5,300.0	5,272.4	5,275.8	5,246.5	13.8	14.2	8.51	255.5	-335.7	407.8	383.4	24.44	16.686	
5,400.0	5,372.4	5,374.8	5,344.5	14.0	14.5	6.78	263.5	-347.2	414.3	389.4	24.89	16.650	
5,500.0	5,472.4	5,473.8	5,442.6	14.2	14.8	5.11	271.5	-358.6	421.2	395.9	25.34	16.620	
5,600.0	5,572.4	5,576.6	5,544.4	14.4	15.2	3.47	279.6	-370.1	428.3	402.5	25.81	16.593	
5,700.0	5,672.4	5,684.8	5,651.9	14.5	15.4	2.19	286.1	-379.5	433.9	407.7	26.25	16.529	
5,800.0	5,772.4	5,793.6	5,760.5	14.7	15.6	1.38	290.3	-385.5	437.6	411.0	26.67	16.409	
5,900.0	5,872.4	5,902.9	5,869.8	14.9	15.8	1.02	292.2	-388.1	439.3	412.2	27.07	16.228	
6,000.0	5,972.4	6,005.5	5,972.4	15.1	16.0	1.01	292.3	-388.3	439.4	411.9	27.45	16.004	
6,100.0	6,072.4	6,105.5	6,072.4	15.3	16.2	1.01	292.3	-388.3	439.4	411.5	27.85	15.774	
6,200.0	6,172.4	6,205.5	6,172.4	15.4	16.3	1.01	292.3	-388.3	439.4	411.1	28.25	15.550	
6,300.0	6,272.4	6,305.5	6,272.4	15.6	16.5	1.01	292.3	-388.3	439.4	410.7	28.66	15.331	
6,400.0	6,372.4	6,405.5	6,372.4	15.8	16.7	1.01	292.3	-388.3	439.4	410.3	29.06	15.118	
6,500.0	6,472.1	6,505.4	6,472.0	15.9	16.8	-89.89	292.2	-382.8	439.4	407.5	31.91	13.769	
6,600.0	6,570.2	6,605.3	6,569.9	16.0	16.9	-89.89	291.9	-363.7	439.4	407.4	32.01	13.725	
6,700.0	6,664.6	6,705.1	6,664.3	16.0	16.9	-89.90	291.4	-331.1	439.4	407.4	32.01	13.727	
6,800.0	6,753.6	6,805.0	6,753.2	16.0	16.8	-89.90	290.7	-285.7	439.4	407.4	31.98	13.739	
6,900.0	6,835.3	6,904.9	6,834.9	16.0	16.8	-89.91	289.8	-228.4	439.4	407.3	32.06	13.707	
7,000.0	6,908.3	7,004.8	6,907.8	16.1	16.8	-89.92	288.8	-160.3	439.4	407.0	32.40	13.563	
7,100.0	6,971.1	7,104.7	6,970.6	16.5	17.0	-89.94	287.6	-82.7	439.4	406.2	33.18	13.244	
7,200.0	7,022.4	7,204.7	7,022.0	17.1	17.5	-89.95	286.3	2.9	439.4	404.9	34.55	12.718	
7,300.0	7,061.3	7,304.6	7,061.0	18.1	18.5	-89.96	284.8	94.8	439.4	402.8	36.59	12.009	
7,400.0	7,087.0	7,404.6	7,086.9	19.5	19.8	-89.98	283.3	191.3	439.5	400.2	39.28	11.187	
7,500.0	7,099.1	7,504.6	7,099.0	21.1	21.4	-89.99	281.8	290.5	439.5	397.0	42.51	10.338	
7,600.0	7,100.0	7,604.6	7,100.0	23.0	23.2	-90.00	280.3	390.4	439.5	393.3	46.14	9.525	
7,700.0	7,100.0	7,704.6	7,100.0	25.0	25.2	-90.00	278.7	490.4	439.5	389.4	50.13	8.767	
7,800.0	7,100.0	7,804.6	7,100.0	27.1	27.3	-90.00	277.2	590.4	439.5	385.1	54.41	8.078	
7,900.0	7,100.0	7,904.6	7,100.0	29.4	29.5	-90.00	275.6	690.4	439.5	380.6	58.91	7.461	
8,000.0	7,100.0	8,004.6	7,100.0	31.8	31.9	-90.00	274.1	790.4	439.6	376.0	63.59	6.912	
8,100.0	7,100.0	8,104.6	7,100.0	34.2	34.3	-90.00	272.5	890.4	439.6	371.2	68.41	6.425	
8,200.0	7,100.0	8,204.6	7,100.0	36.7	36.7	-90.00	271.0	990.4	439.6	366.2	73.34	5.993	
8,300.0	7,100.0	8,304.6	7,100.0	39.2	39.2	-90.00	269.5	1,090.4	439.6	361.2	78.37	5.609	
8,400.0	7,100.0	8,404.6	7,100.0	41.7	41.8	-90.00	267.9	1,190.3	439.6	356.1	83.47	5.267	
8,500.0	7,100.0	8,504.6	7,100.0	44.3	44.4	-90.00	266.4	1,290.3	439.6	351.0	88.64	4.960	
8,600.0	7,100.0	8,604.6	7,100.0	46.9	47.0	-90.00	264.8	1,390.3	439.6	345.8	93.85	4.684	
8,700.0	7,100.0	8,704.6	7,100.0	49.6	49.6	-90.00	263.3	1,490.3	439.7	340.6	99.11	4.436	
8,800.0	7,100.0	8,804.6	7,100.0	52.2	52.2	-90.00	261.7	1,590.3	439.7	335.3	104.41	4.211	
8,900.0	7,100.0	8,904.6	7,100.0	54.9	54.9	-90.00	260.2	1,690.3	439.7	330.0	109.74	4.007	
9,000.0	7,100.0	9,004.6	7,100.0	57.6	57.6	-90.00	258.7	1,790.3	439.7	324.6	115.09	3.821	
9,100.0	7,100.0	9,104.6	7,100.0	60.3	60.2	-90.00	257.1	1,890.3	439.7	319.3	120.47	3.650	
9,200.0	7,100.0	9,204.6	7,100.0	63.0	62.9	-90.00	255.6	1,990.2	439.7	313.9	125.87	3.494	
9,300.0	7,100.0	9,304.6	7,100.0	65.7	65.6	-90.00	254.0	2,090.2	439.8	308.5	131.29	3.350	
9,400.0	7,100.0	9,404.6	7,100.0	68.4	68.4	-90.00	252.5	2,190.2	439.8	303.1	136.73	3.217	
9,500.0	7,100.0	9,504.6	7,100.0	71.1	71.1	-90.00	250.9	2,290.2	439.8	297.6	142.17	3.093	
9,600.0	7,100.0	9,604.6	7,100.0	73.9	73.8	-90.00	249.4	2,390.2	439.8	292.2	147.64	2.979	
9,700.0	7,100.0	9,704.6	7,100.0	76.6	76.5	-90.00	247.8	2,490.2	439.8	286.7	153.11	2.873	
9,800.0	7,100.0	9,804.6	7,100.0	79.3	79.3	-90.00	246.3	2,590.2	439.8	281.3	158.59	2.773	
9,900.0	7,100.0	9,904.6	7,100.0	82.1	82.0	-90.00	244.8	2,690.2	439.9	275.8	164.08	2.681	
10,000.0	7,100.0	10,004.6	7,100.0	84.8	84.8	-90.00	243.2	2,790.2	439.9	270.3	169.58	2.594	
10,100.0	7,100.0	10,104.6	7,100.0	87.6	87.5	-90.00	241.7	2,890.1	439.9	264.8	175.09	2.512	
10,200.0	7,100.0	10,204.6	7,100.0	90.4	90.3	-90.00	240.1	2,990.1	439.9	259.3	180.60	2.436	
10,300.0	7,100.0	10,304.6	7,100.0	93.1	93.0	-90.00	238.6	3,090.1	439.9	253.8	186.12	2.364	

CC - Min centre to center distance or convergent point, SF - min separation factor, ES - min ellipse separation

Company:	Synergy Resources	Local Co-ordinate Reference:	Well SRC Union 12-5CHZ
Project:	SEC.5-T2N-R68W	TVD Reference:	WELL @ 4978.5ft (Ensign 131 RKB - 13.5')
Reference Site:	SRC Union Pad Sec.5-T2N-R68W	MD Reference:	WELL @ 4978.5ft (Ensign 131 RKB - 13.5')
Site Error:	0.0ft	North Reference:	True
Reference Well:	SRC Union 12-5CHZ	Survey Calculation Method:	Minimum Curvature
Well Error:	0.0ft	Output errors are at	2.00 sigma
Reference Wellbore	Wellbore #1	Database:	Landmark
Reference Design:	Plan #3 (1-2-14)	Offset TVD Reference:	Offset Datum

Offset Design SRC Union Pad Sec.5-T2N-R68W - SRC Union C-5CHZ - Wellbore #1 - Plan #3 (1-2-14)												Offset Site Error:	0.0 ft
Survey Program: 0-MWD												Offset Well Error:	0.0 ft
Reference		Offset		Semi Major Axis			Distance						
Measured Depth (ft)	Vertical Depth (ft)	Measured Depth (ft)	Vertical Depth (ft)	Reference (ft)	Offset (ft)	Highside Toolface (°)	Offset Wellbore Centre +N/-S (ft)	+E/-W (ft)	Between Centres (ft)	Between Ellipses (ft)	Minimum Separation (ft)	Separation Factor	Warning
10,400.0	7,100.0	10,404.6	7,100.0	95.9	95.8	-90.00	237.0	3,190.1	439.9	248.3	191.65	2.296	
10,500.0	7,100.0	10,504.6	7,100.0	98.6	98.6	-90.00	235.5	3,290.1	440.0	242.8	197.18	2.231	
10,600.0	7,100.0	10,604.6	7,100.0	101.4	101.3	-90.00	234.0	3,390.1	440.0	237.3	202.71	2.170	
10,700.0	7,100.0	10,704.6	7,100.0	104.2	104.1	-90.00	232.4	3,490.1	440.0	231.7	208.25	2.113	
10,800.0	7,100.0	10,804.6	7,100.0	107.0	106.9	-90.00	230.9	3,590.1	440.0	226.2	213.80	2.058	
10,900.0	7,100.0	10,904.6	7,100.0	109.7	109.6	-90.00	229.3	3,690.0	440.0	220.7	219.34	2.006	
11,000.0	7,100.0	11,004.6	7,100.0	112.5	112.4	-90.00	227.8	3,790.0	440.0	215.1	224.89	1.957	
11,100.0	7,100.0	11,104.6	7,100.0	115.3	115.2	-90.00	226.2	3,890.0	440.1	209.6	230.45	1.910	
11,200.0	7,100.0	11,204.6	7,100.0	118.1	118.0	-90.00	224.7	3,990.0	440.1	204.1	236.01	1.865	
11,300.0	7,100.0	11,304.6	7,100.0	120.9	120.7	-90.00	223.1	4,090.0	440.1	198.5	241.56	1.822	
11,400.0	7,100.0	11,404.6	7,100.0	123.6	123.5	-90.00	221.6	4,190.0	440.1	193.0	247.13	1.781	
11,500.0	7,100.0	11,504.6	7,100.0	126.4	126.3	-90.00	220.1	4,290.0	440.1	187.4	252.69	1.742	
11,600.0	7,100.0	11,604.6	7,100.0	129.2	129.0	-90.00	218.5	4,390.0	440.1	181.9	258.21	1.705	
11,639.2	7,100.0	11,643.7	7,100.0	130.3	129.7	-90.00	217.9	4,429.1	440.1	180.1	260.00	1.693 SF	

Company:	Synergy Resources	Local Co-ordinate Reference:	Well SRC Union 12-5CHZ
Project:	SEC.5-T2N-R68W	TVD Reference:	WELL @ 4978.5ft (Ensign 131 RKB - 13.5')
Reference Site:	SRC Union Pad Sec.5-T2N-R68W	MD Reference:	WELL @ 4978.5ft (Ensign 131 RKB - 13.5')
Site Error:	0.0ft	North Reference:	True
Reference Well:	SRC Union 12-5CHZ	Survey Calculation Method:	Minimum Curvature
Well Error:	0.0ft	Output errors are at	2.00 sigma
Reference Wellbore	Wellbore #1	Database:	Landmark
Reference Design:	Plan #3 (1-2-14)	Offset TVD Reference:	Offset Datum

Offset Design													Offset Site Error:	0.0 ft
Survey Program: 0-MWD													Offset Well Error:	0.0 ft
Reference		Offset		Semi Major Axis			Distance							Warning
Measured Depth (ft)	Vertical Depth (ft)	Measured Depth (ft)	Vertical Depth (ft)	Reference (ft)	Offset (ft)	Highside Toolface (°)	Offset Wellbore Centre +N/-S (ft)	+E/-W (ft)	Between Centres (ft)	Between Ellipses (ft)	Minimum Separation (ft)	Separation Factor		
0.0	0.0	0.0	0.0	0.0	0.0	68.64	21.9	55.9	60.0					
100.0	100.0	100.0	100.0	0.1	0.1	68.64	21.9	55.9	60.0	59.8	0.22	267.019		
200.0	200.0	200.0	200.0	0.3	0.3	68.64	21.9	55.9	60.0	59.3	0.67	89.006		
300.0	300.0	300.0	300.0	0.6	0.6	68.64	21.9	55.9	60.0	58.9	1.12	53.404		
400.0	400.0	400.0	400.0	0.8	0.8	68.64	21.9	55.9	60.0	58.4	1.57	38.146		
500.0	500.0	500.0	500.0	1.0	1.0	68.64	21.9	55.9	60.0	58.0	2.02	29.669		
600.0	600.0	600.0	600.0	1.2	1.2	68.64	21.9	55.9	60.0	57.5	2.47	24.274		
700.0	700.0	700.0	700.0	1.5	1.5	68.64	21.9	55.9	60.0	57.1	2.92	20.540		
800.0	800.0	800.0	800.0	1.7	1.7	68.64	21.9	55.9	60.0	56.6	3.37	17.801		
900.0	900.0	900.0	900.0	1.9	1.9	68.64	21.9	55.9	60.0	56.2	3.82	15.707		
1,000.0	1,000.0	1,000.0	1,000.0	2.1	2.1	68.64	21.9	55.9	60.0	55.7	4.27	14.054		
1,100.0	1,100.0	1,100.0	1,100.0	2.4	2.4	68.64	21.9	55.9	60.0	55.3	4.72	12.715		
1,200.0	1,200.0	1,200.0	1,200.0	2.6	2.6	68.64	21.9	55.9	60.0	54.8	5.17	11.610		
1,300.0	1,300.0	1,300.0	1,300.0	2.8	2.8	68.64	21.9	55.9	60.0	54.4	5.62	10.681		
1,400.0	1,400.0	1,400.0	1,400.0	3.0	3.0	68.64	21.9	55.9	60.0	53.9	6.07	9.890		
1,500.0	1,500.0	1,500.0	1,500.0	3.3	3.3	68.64	21.9	55.9	60.0	53.5	6.52	9.208 CC		
1,600.0	1,600.0	1,600.0	1,600.0	3.5	3.5	179.02	21.9	55.9	60.9	53.9	6.95	8.764		
1,700.0	1,700.0	1,700.0	1,700.0	3.7	3.7	179.06	21.9	55.9	63.5	56.1	7.36	8.629		
1,800.0	1,799.9	1,799.9	1,799.9	3.9	3.9	179.12	21.9	55.9	67.9	60.1	7.77	8.731		
1,900.0	1,899.7	1,899.7	1,899.7	4.1	4.2	179.19	21.9	55.9	74.0	65.8	8.19	9.035		
2,000.0	1,999.4	1,999.4	1,999.4	4.3	4.4	179.27	21.9	55.9	81.8	73.2	8.60	9.510		
2,100.0	2,098.9	2,098.9	2,098.9	4.5	4.6	179.34	21.9	55.9	91.4	82.4	9.02	10.135		
2,200.0	2,198.3	2,198.3	2,198.3	4.7	4.8	179.41	21.9	55.9	102.7	93.3	9.43	10.889		
2,300.0	2,297.4	2,299.2	2,299.2	5.0	5.0	179.28	22.0	55.0	115.0	105.2	9.84	11.690		
2,400.0	2,396.4	2,400.4	2,400.3	5.3	5.2	178.80	22.3	52.4	126.7	116.4	10.25	12.356		
2,500.0	2,495.4	2,501.9	2,501.8	5.5	5.5	178.05	22.8	48.0	136.8	126.1	10.67	12.817		
2,600.0	2,594.5	2,603.7	2,603.4	5.8	5.7	177.05	23.5	41.8	145.4	134.3	11.10	13.099		
2,700.0	2,693.5	2,705.7	2,705.0	6.1	5.9	175.81	24.4	33.7	152.5	141.0	11.54	13.223		
2,800.0	2,792.5	2,807.8	2,806.7	6.4	6.1	174.34	25.5	23.9	158.2	146.2	11.98	13.209		
2,900.0	2,891.5	2,910.0	2,908.2	6.7	6.4	172.61	26.8	12.2	162.5	150.1	12.43	13.074		
3,000.0	2,990.6	3,012.0	3,009.2	7.0	6.6	170.61	28.4	-1.2	165.5	152.6	12.89	12.835		
3,100.0	3,089.6	3,111.7	3,108.1	7.3	6.9	168.57	29.9	-15.0	168.1	154.7	13.37	12.576		
3,200.0	3,188.6	3,211.5	3,206.9	7.6	7.1	166.60	31.5	-28.9	170.9	157.1	13.85	12.338		
3,300.0	3,287.6	3,311.3	3,305.7	8.0	7.4	164.70	33.1	-42.7	173.9	159.6	14.35	12.120		
3,400.0	3,386.6	3,411.1	3,404.5	8.3	7.7	162.86	34.7	-56.6	177.1	162.2	14.86	11.919		
3,500.0	3,485.7	3,510.9	3,503.3	8.6	8.0	161.08	36.2	-70.4	180.5	165.1	15.38	11.734		
3,600.0	3,584.7	3,610.7	3,602.1	8.9	8.3	159.38	37.8	-84.2	184.0	168.1	15.91	11.562		
3,700.0	3,683.7	3,710.5	3,700.9	9.3	8.6	157.73	39.4	-98.1	187.7	171.2	16.46	11.403		
3,800.0	3,782.7	3,810.3	3,799.7	9.6	8.9	156.16	41.0	-111.9	191.5	174.5	17.02	11.255		
3,900.0	3,881.7	3,910.1	3,898.6	9.9	9.2	154.64	42.5	-125.8	195.5	177.9	17.58	11.118		
4,000.0	3,980.8	4,009.9	3,997.4	10.3	9.5	153.19	44.1	-139.6	199.6	181.5	18.16	10.991		
4,100.0	4,079.8	4,109.6	4,096.2	10.6	9.8	151.80	45.7	-153.5	203.9	185.1	18.75	10.872		
4,200.0	4,178.8	4,209.4	4,195.0	10.9	10.1	150.46	47.3	-167.3	208.2	188.9	19.35	10.762		
4,300.0	4,277.8	4,309.2	4,293.8	11.3	10.4	149.18	48.9	-181.2	212.7	192.7	19.95	10.659		
4,400.0	4,376.9	4,409.0	4,392.6	11.6	10.7	147.95	50.4	-195.0	217.2	196.7	20.56	10.564		
4,500.0	4,475.9	4,508.8	4,491.4	11.9	11.0	146.77	52.0	-208.9	221.9	200.7	21.18	10.475		
4,600.0	4,574.9	4,608.6	4,590.2	12.3	11.4	145.65	53.6	-222.7	226.6	204.8	21.81	10.392		
4,700.0	4,673.9	4,708.4	4,689.0	12.6	11.7	144.56	55.2	-236.6	231.4	209.0	22.44	10.314		
4,800.0	4,773.1	4,808.2	4,787.9	12.9	12.0	143.42	56.7	-250.4	235.6	212.5	23.08	10.206		
4,900.0	4,872.6	4,907.9	4,886.6	13.1	12.3	141.82	58.3	-264.3	237.2	213.5	23.72	10.001		
5,000.0	4,972.4	5,007.5	4,985.3	13.3	12.6	139.67	59.9	-278.1	236.3	211.9	24.36	9.701		
5,100.0	5,072.4	5,106.8	5,083.6	13.5	13.0	136.91	61.4	-291.9	233.2	208.2	25.01	9.323		

CC - Min centre to center distance or convergent point, SF - min separation factor, ES - min ellipse separation

Company:	Synergy Resources	Local Co-ordinate Reference:	Well SRC Union 12-5CHZ
Project:	SEC.5-T2N-R68W	TVD Reference:	WELL @ 4978.5ft (Ensign 131 RKB - 13.5')
Reference Site:	SRC Union Pad Sec.5-T2N-R68W	MD Reference:	WELL @ 4978.5ft (Ensign 131 RKB - 13.5')
Site Error:	0.0ft	North Reference:	True
Reference Well:	SRC Union 12-5CHZ	Survey Calculation Method:	Minimum Curvature
Well Error:	0.0ft	Output errors are at	2.00 sigma
Reference Wellbore	Wellbore #1	Database:	Landmark
Reference Design:	Plan #3 (1-2-14)	Offset TVD Reference:	Offset Datum

Offset Design												Offset Site Error:	0.0 ft
Survey Program: 0-MWD												Offset Well Error:	0.0 ft
Reference		Offset		Semi Major Axis			Distance						
Measured Depth (ft)	Vertical Depth (ft)	Measured Depth (ft)	Vertical Depth (ft)	Reference (ft)	Offset (ft)	Highside Toolface (°)	Offset Wellbore Centre +N/-S (ft)	+E/-W (ft)	Between Centres (ft)	Between Ellipses (ft)	Minimum Separation (ft)	Separation Factor	Warning
5,200.0	5,172.4	5,205.9	5,181.7	13.7	13.3	23.29	63.0	-305.6	228.8	204.7	24.17	9.467	
5,300.0	5,272.4	5,304.9	5,279.7	13.8	13.6	19.92	64.6	-319.3	225.2	200.8	24.40	9.229	
5,400.0	5,372.4	5,403.9	5,377.8	14.0	13.9	16.45	66.1	-333.1	222.3	197.7	24.63	9.027	
5,500.0	5,472.4	5,502.9	5,475.8	14.2	14.3	12.90	67.7	-346.8	220.3	195.4	24.87	8.857	
5,600.0	5,572.4	5,602.0	5,573.9	14.4	14.6	9.31	69.3	-360.6	219.2	194.0	25.14	8.718	
5,681.4	5,653.8	5,682.6	5,653.8	14.5	14.8	6.49	70.5	-371.2	218.9	193.5	25.37	8.627	
5,700.0	5,672.4	5,701.0	5,672.1	14.5	14.9	5.93	70.7	-373.4	218.9	193.5	25.43	8.608	
5,800.0	5,772.4	5,800.8	5,771.4	14.7	15.1	3.39	71.8	-383.0	219.2	193.5	25.74	8.515	
5,900.0	5,872.4	5,901.2	5,871.5	14.9	15.3	1.76	72.5	-389.2	219.6	193.5	26.09	8.417	
6,000.0	5,972.4	6,001.8	5,972.1	15.1	15.5	1.05	72.8	-392.0	219.9	193.4	26.46	8.308	
6,100.0	6,072.4	6,102.0	6,072.4	15.3	15.7	1.01	72.9	-392.1	219.9	193.0	26.86	8.187	
6,200.0	6,172.4	6,202.0	6,172.4	15.4	15.8	1.01	72.9	-392.1	219.9	192.6	27.27	8.064	
6,300.0	6,272.4	6,302.0	6,272.4	15.6	16.0	1.01	72.9	-392.1	219.9	192.2	27.68	7.944	
6,364.9	6,337.3	6,366.9	6,337.3	15.7	16.1	1.01	72.9	-392.1	219.9	191.9	27.95	7.867	
6,400.0	6,372.4	6,402.0	6,372.3	15.8	16.2	1.02	72.9	-392.1	219.9	191.8	28.09	7.827	
6,500.0	6,472.1	6,501.8	6,471.7	15.9	16.3	-89.30	72.7	-384.5	219.9	187.9	31.99	6.875	
6,600.0	6,570.2	6,601.2	6,568.8	16.0	16.3	-88.72	72.4	-363.2	220.0	187.9	32.05	6.862	
6,700.0	6,664.6	6,700.4	6,661.7	16.0	16.3	-88.16	71.9	-328.8	220.0	188.0	32.02	6.872	
6,800.0	6,753.6	6,799.2	6,748.7	16.0	16.3	-87.64	71.1	-282.1	220.1	188.1	31.96	6.885	
6,900.0	6,835.3	6,897.8	6,828.3	16.0	16.3	-87.17	70.2	-224.0	220.2	188.1	32.02	6.876	
7,000.0	6,908.3	6,996.2	6,899.0	16.1	16.5	-86.75	69.2	-155.7	220.3	187.9	32.35	6.808	
7,100.0	6,971.1	7,094.4	6,959.6	16.5	16.8	-86.40	68.0	-78.6	220.3	187.2	33.13	6.651	
7,200.0	7,022.4	7,192.4	7,009.0	17.1	17.5	-86.11	66.7	6.0	220.4	185.9	34.49	6.391	
7,300.0	7,061.3	7,290.3	7,046.4	18.1	18.5	-85.90	65.3	96.4	220.5	184.0	36.50	6.040	
7,400.0	7,087.0	7,388.1	7,071.0	19.5	19.8	-85.76	63.8	191.0	220.5	181.4	39.15	5.633	
7,500.0	7,099.1	7,485.9	7,082.6	21.1	21.3	-85.71	62.3	287.9	220.5	178.2	42.32	5.211	
7,600.0	7,100.0	7,585.0	7,083.5	23.0	23.1	-85.71	60.7	387.1	220.5	174.6	45.91	4.803	
7,700.0	7,100.0	7,685.0	7,083.5	25.0	25.0	-85.71	59.2	487.1	220.5	170.7	49.88	4.422	
7,800.0	7,100.0	7,785.0	7,083.5	27.1	27.1	-85.71	57.6	587.1	220.5	166.4	54.13	4.074	
7,900.0	7,100.0	7,885.0	7,083.5	29.4	29.4	-85.71	56.1	687.0	220.6	161.9	58.61	3.763	
8,000.0	7,100.0	7,985.0	7,083.5	31.8	31.7	-85.71	54.5	787.0	220.6	157.3	63.27	3.486	
8,100.0	7,100.0	8,085.0	7,083.5	34.2	34.1	-85.71	52.9	887.0	220.6	152.5	68.08	3.240	
8,200.0	7,100.0	8,185.0	7,083.5	36.7	36.5	-85.71	51.4	987.0	220.6	147.6	72.99	3.022	
8,300.0	7,100.0	8,285.0	7,083.5	39.2	39.0	-85.71	49.8	1,087.0	220.6	142.6	78.00	2.828	
8,400.0	7,100.0	8,385.0	7,083.5	41.7	41.6	-85.71	48.3	1,187.0	220.6	137.5	83.09	2.655	
8,500.0	7,100.0	8,485.0	7,083.5	44.3	44.1	-85.71	46.7	1,287.0	220.6	132.3	88.24	2.500	
8,600.0	7,100.0	8,585.0	7,083.5	46.9	46.7	-85.71	45.2	1,387.0	220.6	127.1	93.44	2.361	
8,700.0	7,100.0	8,685.0	7,083.5	49.6	49.4	-85.71	43.6	1,486.9	220.6	121.9	98.68	2.235	
8,800.0	7,100.0	8,785.0	7,083.5	52.2	52.0	-85.71	42.1	1,586.9	220.6	116.6	103.96	2.122	
8,900.0	7,100.0	8,885.0	7,083.5	54.9	54.7	-85.71	40.5	1,686.9	220.6	111.3	109.27	2.019	
9,000.0	7,100.0	8,985.0	7,083.5	57.6	57.3	-85.71	38.9	1,786.9	220.6	106.0	114.62	1.925	
9,100.0	7,100.0	9,085.0	7,083.5	60.3	60.0	-85.71	37.4	1,886.9	220.6	100.6	119.98	1.839	
9,200.0	7,100.0	9,185.0	7,083.5	63.0	62.7	-85.71	35.8	1,986.9	220.6	95.2	125.37	1.760	
9,300.0	7,100.0	9,285.0	7,083.5	65.7	65.4	-85.71	34.3	2,086.9	220.6	89.8	130.77	1.687	
9,400.0	7,100.0	9,385.0	7,083.5	68.4	68.1	-85.71	32.7	2,186.9	220.6	84.4	136.19	1.620	
9,500.0	7,100.0	9,485.0	7,083.5	71.1	70.9	-85.71	31.2	2,286.8	220.6	79.0	141.62	1.558	
9,600.0	7,100.0	9,585.0	7,083.5	73.9	73.6	-85.71	29.6	2,386.8	220.6	73.5	147.07	1.500	
9,700.0	7,100.0	9,685.0	7,083.5	76.6	76.3	-85.71	28.0	2,486.8	220.6	68.1	152.53	1.446 Level 3	
9,800.0	7,100.0	9,785.0	7,083.5	79.3	79.1	-85.71	26.5	2,586.8	220.6	62.6	158.00	1.396 Level 3	
9,900.0	7,100.0	9,885.0	7,083.5	82.1	81.8	-85.71	24.9	2,686.8	220.6	57.1	163.48	1.350 Level 3	
10,000.0	7,100.0	9,985.0	7,083.5	84.8	84.5	-85.71	23.4	2,786.8	220.6	51.7	168.96	1.306 Level 3	
10,100.0	7,100.0	10,085.0	7,083.5	87.6	87.3	-85.71	21.8	2,886.8	220.6	46.2	174.45	1.265 Level 3	

CC - Min centre to center distance or convergent point, SF - min separation factor, ES - min ellipse separation

Company:	Synergy Resources	Local Co-ordinate Reference:	Well SRC Union 12-5CHZ
Project:	SEC.5-T2N-R68W	TVD Reference:	WELL @ 4978.5ft (Ensign 131 RKB - 13.5')
Reference Site:	SRC Union Pad Sec.5-T2N-R68W	MD Reference:	WELL @ 4978.5ft (Ensign 131 RKB - 13.5')
Site Error:	0.0ft	North Reference:	True
Reference Well:	SRC Union 12-5CHZ	Survey Calculation Method:	Minimum Curvature
Well Error:	0.0ft	Output errors are at	2.00 sigma
Reference Wellbore	Wellbore #1	Database:	Landmark
Reference Design:	Plan #3 (1-2-14)	Offset TVD Reference:	Offset Datum

Offset Design SRC Union Pad Sec.5-T2N-R68W - SRC Union C-5NHZ - Wellbore #1 - Plan #3 (1-2-14)												Offset Site Error:	0.0 ft
Survey Program: 0-MWD												Offset Well Error:	0.0 ft
Reference		Offset		Semi Major Axis			Distance						
Measured Depth (ft)	Vertical Depth (ft)	Measured Depth (ft)	Vertical Depth (ft)	Reference (ft)	Offset (ft)	Highside Toolface (°)	Offset Wellbore Centre +N/-S (ft)	+E/-W (ft)	Between Centres (ft)	Between Ellipses (ft)	Minimum Separation (ft)	Separation Factor	Warning
10,200.0	7,100.0	10,185.0	7,083.5	90.4	90.1	-85.71	20.3	2,986.8	220.6	40.7	179.95	1.226	Level 2
10,300.0	7,100.0	10,285.0	7,083.5	93.1	92.8	-85.71	18.7	3,086.7	220.6	35.2	185.46	1.190	Level 2
10,400.0	7,100.0	10,385.0	7,083.5	95.9	95.6	-85.71	17.1	3,186.7	220.6	29.7	190.97	1.155	Level 2
10,500.0	7,100.0	10,485.0	7,083.5	98.6	98.3	-85.71	15.6	3,286.7	220.6	24.2	196.49	1.123	Level 2
10,600.0	7,100.0	10,585.0	7,083.5	101.4	101.1	-85.71	14.0	3,386.7	220.6	18.6	202.01	1.092	Level 2
10,700.0	7,100.0	10,685.0	7,083.5	104.2	103.9	-85.71	12.5	3,486.7	220.6	13.1	207.53	1.063	Level 2
10,800.0	7,100.0	10,785.0	7,083.5	107.0	106.6	-85.71	10.9	3,586.7	220.7	7.6	213.06	1.036	Level 2
10,900.0	7,100.0	10,885.0	7,083.5	109.7	109.4	-85.71	9.4	3,686.7	220.7	2.1	218.60	1.009	Level 2
11,000.0	7,100.0	10,985.0	7,083.5	112.5	112.2	-85.71	7.8	3,786.7	220.7	-3.5	224.13	0.984	Level 1
11,100.0	7,100.0	11,085.0	7,083.5	115.3	115.0	-85.71	6.3	3,886.7	220.7	-9.0	229.67	0.961	Level 1
11,200.0	7,100.0	11,185.0	7,083.5	118.1	117.7	-85.71	4.7	3,986.6	220.7	-14.6	235.22	0.938	Level 1
11,300.0	7,100.0	11,285.0	7,083.5	120.9	120.5	-85.71	3.1	4,086.6	220.7	-20.1	240.76	0.917	Level 1
11,400.0	7,100.0	11,385.0	7,083.5	123.6	123.3	-85.71	1.6	4,186.6	220.7	-25.6	246.31	0.896	Level 1
11,500.0	7,100.0	11,485.0	7,083.5	126.4	126.1	-85.71	0.0	4,286.6	220.7	-31.2	251.86	0.876	Level 1
11,600.0	7,100.0	11,585.0	7,083.5	129.2	128.9	-85.71	-1.5	4,386.6	220.7	-36.7	257.42	0.857	Level 1
11,639.2	7,100.0	11,624.2	7,083.5	130.3	130.0	-85.71	-2.1	4,425.7	220.7	-38.9	259.59	0.850	Level 1, ES, SF

Reference Depths are relative to WELL @ 4978.5ft (Ensign 131 RKB - Coordinates are relative to: SRC Union 12-5CHZ
Offset Depths are relative to Offset Datum Coordinate System is US State Plane 1983, Colorado Northern Zone
Central Meridian is -105.500000 ° Grid Convergence at Surface is: 0.30°



Reference Depths are relative to WELL @ 4978.5ft (Ensign 131 RKB - Coordinates are relative to: SRC Union 12-5CHZ
Offset Depths are relative to Offset Datum Coordinate System is US State Plane 1983, Colorado Northern Zone
Central Meridian is -105.500000 ° Grid Convergence at Surface is: 0.30°



nien 12-5NHZ, Wellbore #1, Plan #3 (1-2-14) V0 SRC Union C-5CHZ, Wellbore #1, Plan #3 (1-2-14) V0 SRC Union C-5NHZ, Wellbore #1, Plan #3 (1-2-14) V0