

Synergy Resources

Well Name: **SRC Union A-5CHZ**

Surface Location: SRC Union Pad Sec.5-T2N-R68W
North American Datum 1983 , US State Plane 1983 , Colorado Northern Zone

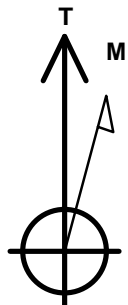
Ground Elevation: 4963.0

+N/-S	+E/-W	Northing	Easting	Latitude	Longitude	Slot
0.0	0.0	1305169.77	3129889.07	40.170152	-105.035203	

Ensign 131 RKB - 13.5' WELL @ 4976.5ft (Ensign 131 RKB - 13.5')

WELLBORE TARGET DETAILS

Name	TVD	+N/-S	+E/-W	Shape
SHL 1683'FNL & 350'FWL	1.0	0.0	0.0	Point
BHL 997'FNL & 460'FEL	7100.0	718.1	4532.5	Point



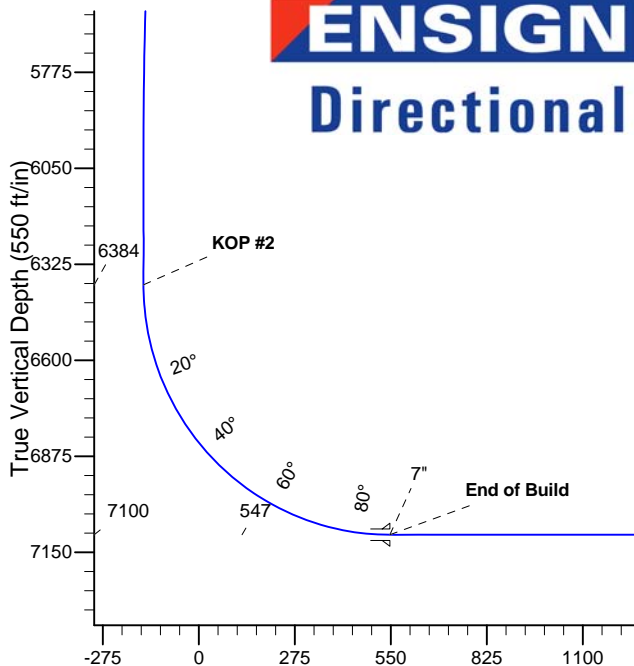
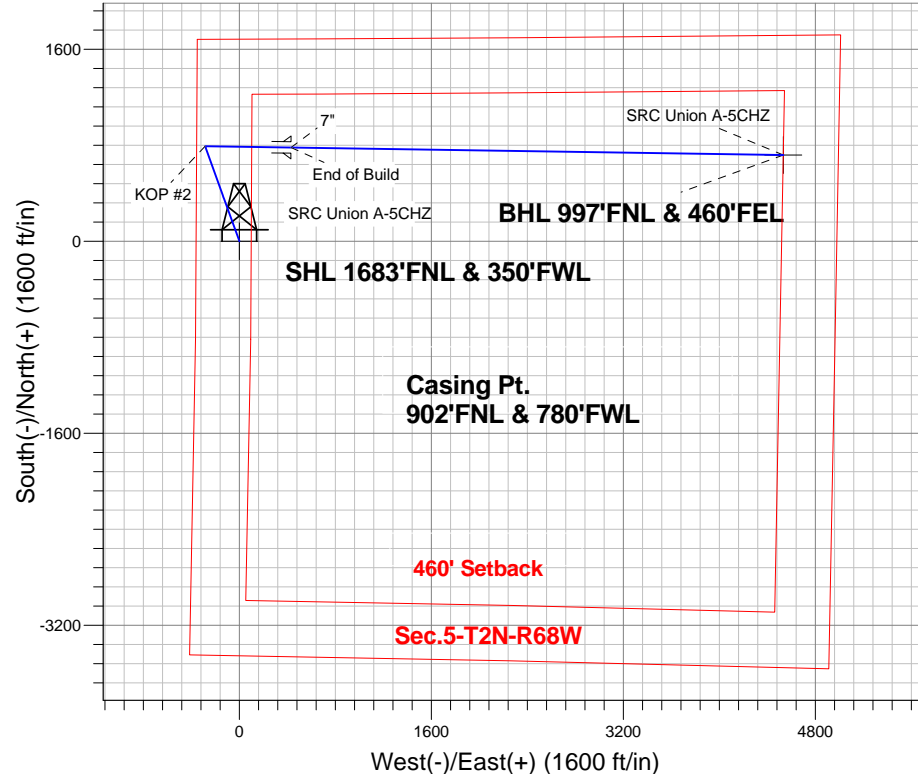
Azimuths to True North
Magnetic North: 8.64°

Magnetic Field
Strength: 52711.9snT
Dip Angle: 66.73°
Date: 1/2/2014
Model: IGRF2010

SRC Union Pad Sec.5-T2N-R68W
SRC Union A-5CHZ
Plan #3 (1-2-14)
12:42, January 03 2014

ANNOTATIONS

TVD	MD	Annotation
600.0	600.0	KOP #1
6383.9	6455.7	KOP #2
7100.0	7580.7	End of Build



SECTION DETAILS

Sec	MD	Inc	Azi	TVD	+N/-S	+E/-W	DLeg	TFace	VSec	Target
1	0.0	0.00	0.00	0.0	0.0	0.0	0.00	0.00	0.0	
2	600.0	0.00	0.00	600.0	0.0	0.0	0.00	0.00	0.0	
3	1632.1	10.32	340.14	1626.6	87.2	-31.5	1.00	340.14	-17.5	
4	5555.8	10.32	340.14	5486.7	748.4	-270.3	0.00	0.00	-149.8	
5	6071.8	0.00	0.00	6000.0	792.0	-286.0	2.00	180.00	-158.5	
6	6455.7	0.00	0.00	6383.8	792.0	-286.0	0.00	0.00	-158.5	
7	7580.7	90.00	90.88	7100.0	781.0	430.1	8.00	90.88	547.0	
8	11683.6	90.00	90.88	7100.0	718.1	4532.5	0.00	0.00	4589.1	BHL 997'FNL & 460'FEL

Vertical Section at 81.00° (550 ft/in)



Synergy Resources

SEC.5-T2N-R68W

SRC Union Pad Sec.5-T2N-R68W

SRC Union A-5CHZ

Wellbore #1

Plan: Plan #3 (1-2-14)

Standard Planning Report

03 January, 2014

Database:	Landmark	Local Co-ordinate Reference:	Well SRC Union A-5CHZ
Company:	Synergy Resources	TVD Reference:	WELL @ 4976.5ft (Ensign 131 RKB - 13.5')
Project:	SEC.5-T2N-R68W	MD Reference:	WELL @ 4976.5ft (Ensign 131 RKB - 13.5')
Site:	SRC Union Pad Sec.5-T2N-R68W	North Reference:	True
Well:	SRC Union A-5CHZ	Survey Calculation Method:	Minimum Curvature
Wellbore:	Wellbore #1		
Design:	Plan #3 (1-2-14)		

Project	SEC.5-T2N-R68W, Weld County, CO		
Map System:	US State Plane 1983	System Datum:	Mean Sea Level
Geo Datum:	North American Datum 1983		Using Well Reference Point
Map Zone:	Colorado Northern Zone		Using geodetic scale factor

Site		SRC Union Pad Sec.5-T2N-R68W			
Site Position:		Northing:	1,305,169.78 ft	Latitude:	40.170152
From:	Lat/Long	Easting:	3,129,889.07 ft	Longitude:	-105.035203
Position Uncertainty:	0.0 ft	Slot Radius:	"	Grid Convergence:	0.30 °

Well	SRC Union A-5CHZ					
Well Position	+N-S	0.0 ft	Northing:	1,305,169.77 ft	Latitude:	40.170152
	+E-W	0.0 ft	Easting:	3,129,889.07 ft	Longitude:	-105.035203
Position Uncertainty		0.0 ft	Wellhead Elevation:	ft	Ground Level:	4,963.0 ft

Wellbore	Wellbore #1				
Magnetics	Model Name	Sample Date	Declination (°)	Dip Angle (°)	Field Strength (nT)
	IGRF2010	1/2/2014	8.65	66.73	52,712

Design	Plan #3 (1-2-14)			
Audit Notes:				
Version:	Phase:	PROTOTYPE	Tie On Depth:	0.0
Vertical Section:	Depth From (TVD) (ft)	+N/-S (ft)	+E/-W (ft)	Direction (°)
	0.0	0.0	0.0	81.00

Plan Sections										
Measured Depth (ft)	Inclination (°)	Azimuth (°)	Vertical Depth (ft)	+N/-S (ft)	+E/-W (ft)	Dogleg Rate (°/100ft)	Build Rate (°/100ft)	Turn Rate (°/100ft)	TFO (°)	Target
0.0	0.00	0.00	0.0	0.0	0.0	0.00	0.00	0.00	0.00	
600.0	0.00	0.00	600.0	0.0	0.0	0.00	0.00	0.00	0.00	
1,632.1	10.32	340.14	1,626.6	87.2	-31.5	1.00	1.00	0.00	340.14	
5,555.8	10.32	340.14	5,486.7	748.4	-270.3	0.00	0.00	0.00	0.00	
6,071.8	0.00	0.00	6,000.0	792.0	-286.0	2.00	-2.00	0.00	180.00	
6,455.7	0.00	0.00	6,383.8	792.0	-286.0	0.00	0.00	0.00	0.00	
7,580.7	90.00	90.88	7,100.0	781.0	430.1	8.00	8.00	0.00	90.88	
11,683.6	90.00	90.88	7,100.0	718.1	4,532.5	0.00	0.00	0.00	0.00	BHL 997'FNL & 46C

Database:	Landmark	Local Co-ordinate Reference:	Well SRC Union A-5CHZ
Company:	Synergy Resources	TVD Reference:	WELL @ 4976.5ft (Ensign 131 RKB - 13.5')
Project:	SEC.5-T2N-R68W	MD Reference:	WELL @ 4976.5ft (Ensign 131 RKB - 13.5')
Site:	SRC Union Pad Sec.5-T2N-R68W	North Reference:	True
Well:	SRC Union A-5CHZ	Survey Calculation Method:	Minimum Curvature
Wellbore:	Wellbore #1		
Design:	Plan #3 (1-2-14)		

Planned Survey									
Measured Depth (ft)	Inclination (°)	Azimuth (°)	Vertical Depth (ft)	+N/-S (ft)	+E/-W (ft)	Vertical Section (ft)	Dogleg Rate (°/100ft)	Build Rate (°/100ft)	Turn Rate (°/100ft)
0.0	0.00	0.00	0.0	0.0	0.0	0.0	0.00	0.00	0.00
1.0	0.00	0.00	1.0	0.0	0.0	0.0	0.00	0.00	0.00
SHL 1683'FNL & 350'FWL									
100.0	0.00	0.00	100.0	0.0	0.0	0.0	0.00	0.00	0.00
200.0	0.00	0.00	200.0	0.0	0.0	0.0	0.00	0.00	0.00
300.0	0.00	0.00	300.0	0.0	0.0	0.0	0.00	0.00	0.00
400.0	0.00	0.00	400.0	0.0	0.0	0.0	0.00	0.00	0.00
500.0	0.00	0.00	500.0	0.0	0.0	0.0	0.00	0.00	0.00
600.0	0.00	0.00	600.0	0.0	0.0	0.0	0.00	0.00	0.00
KOP #1									
700.0	1.00	340.14	700.0	0.8	-0.3	-0.2	1.00	1.00	0.00
800.0	2.00	340.14	800.0	3.3	-1.2	-0.7	1.00	1.00	0.00
900.0	3.00	340.14	899.9	7.4	-2.7	-1.5	1.00	1.00	0.00
1,000.0	4.00	340.14	999.7	13.1	-4.7	-2.6	1.00	1.00	0.00
1,100.0	5.00	340.14	1,099.4	20.5	-7.4	-4.1	1.00	1.00	0.00
1,200.0	6.00	340.14	1,198.9	29.5	-10.7	-5.9	1.00	1.00	0.00
1,300.0	7.00	340.14	1,298.3	40.2	-14.5	-8.0	1.00	1.00	0.00
1,400.0	8.00	340.14	1,397.4	52.4	-18.9	-10.5	1.00	1.00	0.00
1,500.0	9.00	340.14	1,496.3	66.3	-24.0	-13.3	1.00	1.00	0.00
1,600.0	10.00	340.14	1,594.9	81.9	-29.6	-16.4	1.00	1.00	0.00
1,632.1	10.32	340.14	1,626.6	87.2	-31.5	-17.5	1.00	1.00	0.00
1,700.0	10.32	340.14	1,693.3	98.6	-35.6	-19.7	0.00	0.00	0.00
1,800.0	10.32	340.14	1,791.7	115.5	-41.7	-23.1	0.00	0.00	0.00
1,900.0	10.32	340.14	1,890.1	132.3	-47.8	-26.5	0.00	0.00	0.00
2,000.0	10.32	340.14	1,988.5	149.2	-53.9	-29.9	0.00	0.00	0.00
2,100.0	10.32	340.14	2,086.9	166.0	-60.0	-33.2	0.00	0.00	0.00
2,200.0	10.32	340.14	2,185.2	182.9	-66.0	-36.6	0.00	0.00	0.00
2,300.0	10.32	340.14	2,283.6	199.7	-72.1	-40.0	0.00	0.00	0.00
2,400.0	10.32	340.14	2,382.0	216.6	-78.2	-43.4	0.00	0.00	0.00
2,500.0	10.32	340.14	2,480.4	233.5	-84.3	-46.7	0.00	0.00	0.00
2,600.0	10.32	340.14	2,578.8	250.3	-90.4	-50.1	0.00	0.00	0.00
2,700.0	10.32	340.14	2,677.1	267.2	-96.5	-53.5	0.00	0.00	0.00
2,800.0	10.32	340.14	2,775.5	284.0	-102.6	-56.9	0.00	0.00	0.00
2,900.0	10.32	340.14	2,873.9	300.9	-108.6	-60.2	0.00	0.00	0.00
3,000.0	10.32	340.14	2,972.3	317.7	-114.7	-63.6	0.00	0.00	0.00
3,100.0	10.32	340.14	3,070.7	334.6	-120.8	-67.0	0.00	0.00	0.00
3,200.0	10.32	340.14	3,169.1	351.4	-126.9	-70.3	0.00	0.00	0.00
3,300.0	10.32	340.14	3,267.4	368.3	-133.0	-73.7	0.00	0.00	0.00
3,400.0	10.32	340.14	3,365.8	385.1	-139.1	-77.1	0.00	0.00	0.00
3,500.0	10.32	340.14	3,464.2	402.0	-145.2	-80.5	0.00	0.00	0.00
3,600.0	10.32	340.14	3,562.6	418.8	-151.2	-83.8	0.00	0.00	0.00
3,700.0	10.32	340.14	3,661.0	435.7	-157.3	-87.2	0.00	0.00	0.00
3,800.0	10.32	340.14	3,759.3	452.5	-163.4	-90.6	0.00	0.00	0.00
3,900.0	10.32	340.14	3,857.7	469.4	-169.5	-94.0	0.00	0.00	0.00
4,000.0	10.32	340.14	3,956.1	486.2	-175.6	-97.3	0.00	0.00	0.00
4,100.0	10.32	340.14	4,054.5	503.1	-181.7	-100.7	0.00	0.00	0.00
4,200.0	10.32	340.14	4,152.9	519.9	-187.8	-104.1	0.00	0.00	0.00
4,300.0	10.32	340.14	4,251.3	536.8	-193.8	-107.5	0.00	0.00	0.00
4,400.0	10.32	340.14	4,349.6	553.6	-199.9	-110.8	0.00	0.00	0.00
4,500.0	10.32	340.14	4,448.0	570.5	-206.0	-114.2	0.00	0.00	0.00
4,600.0	10.32	340.14	4,546.4	587.3	-212.1	-117.6	0.00	0.00	0.00
4,700.0	10.32	340.14	4,644.8	604.2	-218.2	-120.9	0.00	0.00	0.00
4,800.0	10.32	340.14	4,743.2	621.0	-224.3	-124.3	0.00	0.00	0.00
4,900.0	10.32	340.14	4,841.5	637.9	-230.3	-127.7	0.00	0.00	0.00

Database:	Landmark	Local Co-ordinate Reference:	Well SRC Union A-5CHZ
Company:	Synergy Resources	TVD Reference:	WELL @ 4976.5ft (Ensign 131 RKB - 13.5')
Project:	SEC.5-T2N-R68W	MD Reference:	WELL @ 4976.5ft (Ensign 131 RKB - 13.5')
Site:	SRC Union Pad Sec.5-T2N-R68W	North Reference:	True
Well:	SRC Union A-5CHZ	Survey Calculation Method:	Minimum Curvature
Wellbore:	Wellbore #1		
Design:	Plan #3 (1-2-14)		

Planned Survey									
Measured Depth (ft)	Inclination (°)	Azimuth (°)	Vertical Depth (ft)	+N/-S (ft)	+E/-W (ft)	Vertical Section (ft)	Dogleg Rate (°/100ft)	Build Rate (°/100ft)	Turn Rate (°/100ft)
5,000.0	10.32	340.14	4,939.9	654.7	-236.4	-131.1	0.00	0.00	0.00
5,100.0	10.32	340.14	5,038.3	671.6	-242.5	-134.4	0.00	0.00	0.00
5,200.0	10.32	340.14	5,136.7	688.4	-248.6	-137.8	0.00	0.00	0.00
5,300.0	10.32	340.14	5,235.1	705.3	-254.7	-141.2	0.00	0.00	0.00
5,400.0	10.32	340.14	5,333.5	722.1	-260.8	-144.6	0.00	0.00	0.00
5,500.0	10.32	340.14	5,431.8	739.0	-266.9	-147.9	0.00	0.00	0.00
5,555.8	10.32	340.14	5,486.7	748.4	-270.3	-149.8	0.00	0.00	0.00
5,600.0	9.44	340.14	5,530.3	755.5	-272.8	-151.2	2.00	-2.00	0.00
5,700.0	7.44	340.14	5,629.2	769.3	-277.8	-154.0	2.00	-2.00	0.00
5,800.0	5.44	340.14	5,728.6	779.9	-281.6	-156.1	2.00	-2.00	0.00
5,900.0	3.44	340.14	5,828.3	787.2	-284.2	-157.6	2.00	-2.00	0.00
6,000.0	1.44	340.14	5,928.2	791.2	-285.7	-158.4	2.00	-2.00	0.00
6,071.8	0.00	0.00	6,000.0	792.0	-286.0	-158.5	2.00	-2.00	0.00
6,100.0	0.00	0.00	6,028.2	792.0	-286.0	-158.5	0.00	0.00	0.00
6,200.0	0.00	0.00	6,128.2	792.0	-286.0	-158.5	0.00	0.00	0.00
6,300.0	0.00	0.00	6,228.2	792.0	-286.0	-158.5	0.00	0.00	0.00
6,400.0	0.00	0.00	6,328.2	792.0	-286.0	-158.5	0.00	0.00	0.00
6,455.7	0.00	0.00	6,383.9	792.0	-286.0	-158.5	0.00	0.00	0.00
KOP #2									
6,500.0	3.55	90.88	6,428.1	792.0	-284.6	-157.2	8.01	8.01	0.00
6,600.0	11.55	90.88	6,527.2	791.8	-271.5	-144.3	8.00	8.00	0.00
6,700.0	19.55	90.88	6,623.4	791.4	-244.7	-117.9	8.00	8.00	0.00
6,800.0	27.55	90.88	6,715.0	790.8	-204.8	-78.6	8.00	8.00	0.00
6,900.0	35.55	90.88	6,800.2	790.0	-152.5	-27.0	8.00	8.00	0.00
7,000.0	43.55	90.88	6,877.2	789.0	-88.9	35.6	8.00	8.00	0.00
7,100.0	51.55	90.88	6,944.7	787.8	-15.2	108.3	8.00	8.00	0.00
7,200.0	59.55	90.88	7,001.2	786.6	67.2	189.4	8.00	8.00	0.00
7,300.0	67.55	90.88	7,045.7	785.2	156.6	277.6	8.00	8.00	0.00
7,400.0	75.55	90.88	7,077.3	783.8	251.4	370.9	8.00	8.00	0.00
7,500.0	83.55	90.88	7,095.5	782.3	349.6	467.7	8.00	8.00	0.00
7,580.7	90.00	90.88	7,100.0	781.0	430.2	547.1	8.00	8.00	0.00
End of Build - 7"									
7,600.0	90.00	90.88	7,100.0	780.7	449.5	566.1	0.00	0.00	0.00
7,700.0	90.00	90.88	7,100.0	779.2	549.4	664.6	0.00	0.00	0.00
7,800.0	90.00	90.88	7,100.0	777.7	649.4	763.1	0.00	0.00	0.00
7,900.0	90.00	90.88	7,100.0	776.1	749.4	861.6	0.00	0.00	0.00
8,000.0	90.00	90.88	7,100.0	774.6	849.4	960.2	0.00	0.00	0.00
8,100.0	90.00	90.88	7,100.0	773.1	949.4	1,058.7	0.00	0.00	0.00
8,200.0	90.00	90.88	7,100.0	771.5	1,049.4	1,157.2	0.00	0.00	0.00
8,300.0	90.00	90.88	7,100.0	770.0	1,149.4	1,255.7	0.00	0.00	0.00
8,400.0	90.00	90.88	7,100.0	768.4	1,249.4	1,354.2	0.00	0.00	0.00
8,500.0	90.00	90.88	7,100.0	766.9	1,349.4	1,452.7	0.00	0.00	0.00
8,600.0	90.00	90.88	7,100.0	765.4	1,449.3	1,551.3	0.00	0.00	0.00
8,700.0	90.00	90.88	7,100.0	763.8	1,549.3	1,649.8	0.00	0.00	0.00
8,800.0	90.00	90.88	7,100.0	762.3	1,649.3	1,748.3	0.00	0.00	0.00
8,900.0	90.00	90.88	7,100.0	760.8	1,749.3	1,846.8	0.00	0.00	0.00
9,000.0	90.00	90.88	7,100.0	759.2	1,849.3	1,945.3	0.00	0.00	0.00
9,100.0	90.00	90.88	7,100.0	757.7	1,949.3	2,043.8	0.00	0.00	0.00
9,200.0	90.00	90.88	7,100.0	756.2	2,049.3	2,142.4	0.00	0.00	0.00
9,300.0	90.00	90.88	7,100.0	754.6	2,149.3	2,240.9	0.00	0.00	0.00
9,400.0	90.00	90.88	7,100.0	753.1	2,249.2	2,339.4	0.00	0.00	0.00
9,500.0	90.00	90.88	7,100.0	751.6	2,349.2	2,437.9	0.00	0.00	0.00
9,600.0	90.00	90.88	7,100.0	750.0	2,449.2	2,536.4	0.00	0.00	0.00
9,700.0	90.00	90.88	7,100.0	748.5	2,549.2	2,634.9	0.00	0.00	0.00

Database:	Landmark	Local Co-ordinate Reference:	Well SRC Union A-5CHZ
Company:	Synergy Resources	TVD Reference:	WELL @ 4976.5ft (Ensign 131 RKB - 13.5')
Project:	SEC.5-T2N-R68W	MD Reference:	WELL @ 4976.5ft (Ensign 131 RKB - 13.5')
Site:	SRC Union Pad Sec.5-T2N-R68W	North Reference:	True
Well:	SRC Union A-5CHZ	Survey Calculation Method:	Minimum Curvature
Wellbore:	Wellbore #1		
Design:	Plan #3 (1-2-14)		

Planned Survey									
Measured Depth (ft)	Inclination (°)	Azimuth (°)	Vertical Depth (ft)	+N/-S (ft)	+E/-W (ft)	Vertical Section (ft)	Dogleg Rate (°/100ft)	Build Rate (°/100ft)	Turn Rate (°/100ft)
9,800.0	90.00	90.88	7,100.0	747.0	2,649.2	2,733.5	0.00	0.00	0.00
9,900.0	90.00	90.88	7,100.0	745.4	2,749.2	2,832.0	0.00	0.00	0.00
10,000.0	90.00	90.88	7,100.0	743.9	2,849.2	2,930.5	0.00	0.00	0.00
10,100.0	90.00	90.88	7,100.0	742.4	2,949.2	3,029.0	0.00	0.00	0.00
10,200.0	90.00	90.88	7,100.0	740.8	3,049.2	3,127.5	0.00	0.00	0.00
10,300.0	90.00	90.88	7,100.0	739.3	3,149.1	3,226.0	0.00	0.00	0.00
10,400.0	90.00	90.88	7,100.0	737.8	3,249.1	3,324.6	0.00	0.00	0.00
10,500.0	90.00	90.88	7,100.0	736.2	3,349.1	3,423.1	0.00	0.00	0.00
10,600.0	90.00	90.88	7,100.0	734.7	3,449.1	3,521.6	0.00	0.00	0.00
10,700.0	90.00	90.88	7,100.0	733.2	3,549.1	3,620.1	0.00	0.00	0.00
10,800.0	90.00	90.88	7,100.0	731.6	3,649.1	3,718.6	0.00	0.00	0.00
10,900.0	90.00	90.88	7,100.0	730.1	3,749.1	3,817.1	0.00	0.00	0.00
11,000.0	90.00	90.88	7,100.0	728.6	3,849.1	3,915.7	0.00	0.00	0.00
11,100.0	90.00	90.88	7,100.0	727.0	3,949.0	4,014.2	0.00	0.00	0.00
11,200.0	90.00	90.88	7,100.0	725.5	4,049.0	4,112.7	0.00	0.00	0.00
11,300.0	90.00	90.88	7,100.0	724.0	4,149.0	4,211.2	0.00	0.00	0.00
11,400.0	90.00	90.88	7,100.0	722.4	4,249.0	4,309.7	0.00	0.00	0.00
11,500.0	90.00	90.88	7,100.0	720.9	4,349.0	4,408.2	0.00	0.00	0.00
11,600.0	90.00	90.88	7,100.0	719.4	4,449.0	4,506.7	0.00	0.00	0.00
11,683.6	90.00	90.88	7,100.0	718.1	4,532.5	4,589.1	0.00	0.00	0.00
BHL 997'FNL & 460'FEL									

Casing Points				
Measured Depth (ft)	Vertical Depth (ft)	Name	Casing Diameter (")	Hole Diameter (")
7,580.7	7,100.0	7"	7	8-3/4

Plan Annotations				
Measured Depth (ft)	Vertical Depth (ft)	Local Coordinates		Comment
		+N/-S (ft)	+E/-W (ft)	
600.0	600.0	0.0	0.0	KOP #1
6,455.7	6,383.9	792.0	-286.0	KOP #2
7,580.7	7,100.0	781.0	430.2	End of Build



Synergy Resources

SEC.5-T2N-R68W

SRC Union Pad Sec.5-T2N-R68W

SRC Union A-5CHZ

Wellbore #1

Plan #3 (1-2-14)

Anticollision Report

03 January, 2014

Company:	Synergy Resources	Local Co-ordinate Reference:	Well SRC Union A-5CHZ
Project:	SEC.5-T2N-R68W	TVD Reference:	WELL @ 4976.5ft (Ensign 131 RKB - 13.5')
Reference Site:	SRC Union Pad Sec.5-T2N-R68W	MD Reference:	WELL @ 4976.5ft (Ensign 131 RKB - 13.5')
Site Error:	0.0ft	North Reference:	True
Reference Well:	SRC Union A-5CHZ	Survey Calculation Method:	Minimum Curvature
Well Error:	0.0ft	Output errors are at	2.00 sigma
Reference Wellbore	Wellbore #1	Database:	Landmark
Reference Design:	Plan #3 (1-2-14)	Offset TVD Reference:	Offset Datum

Reference	Plan #3 (1-2-14)		
Filter type:	NO GLOBAL FILTER: Using user defined selection & filtering criteria		
Interpolation Method:	MD Interval 100.0ft	Error Model:	ISCWSA
Depth Range:	Unlimited	Scan Method:	Closest Approach 3D
Results Limited by:	Maximum center-center distance of 10,000.0ft	Error Surface:	Elliptical Conic
Warning Levels Evaluated at:	2.00 Sigma		

Survey Tool Program	Date 1/3/2014			
From (ft)	To (ft)	Survey (Wellbore)	Tool Name	Description
0.0	11,683.6	Plan #3 (1-2-14) (Wellbore #1)	MWD	MWD - Standard

Summary						
Site Name	Reference Measured Depth (ft)	Offset Measured Depth (ft)	Distance Between Centres (ft)	Distance Between Ellipses (ft)	Separation Factor	Warning
Offset Well - Wellbore - Design						
SRC Union Pad Sec.5-T2N-R68W						
SRC Union 12-5CHZ - Wellbore #1 - Plan #3 (1-2-14)	746.5	748.5	99.9	96.8	31.887	CC
SRC Union 12-5CHZ - Wellbore #1 - Plan #3 (1-2-14)	900.0	901.9	100.1	96.3	26.180	ES
SRC Union 12-5CHZ - Wellbore #1 - Plan #3 (1-2-14)	11,683.6	11,639.2	904.7	643.4	3.462	SF
SRC Union 12-5NHZ - Wellbore #1 - Plan #3 (1-2-14)	692.0	693.0	39.8	36.9	13.780	CC
SRC Union 12-5NHZ - Wellbore #1 - Plan #3 (1-2-14)	800.0	801.0	39.9	36.5	11.831	ES
SRC Union 12-5NHZ - Wellbore #1 - Plan #3 (1-2-14)	11,683.6	11,627.3	1,124.6	863.1	4.301	SF
SRC Union A-5NHZ - Wellbore #1 - Plan #3 (1-2-14)	641.5	641.5	20.0	17.3	7.508	CC
SRC Union A-5NHZ - Wellbore #1 - Plan #3 (1-2-14)	11,683.6	11,639.8	245.4	-15.6	0.940	Level 1, ES, SF
SRC Union C-5CHZ - Wellbore #1 - Plan #3 (1-2-14)	764.8	766.8	120.0	116.8	37.321	CC
SRC Union C-5CHZ - Wellbore #1 - Plan #3 (1-2-14)	1,000.0	1,001.7	120.6	116.3	28.180	ES
SRC Union C-5CHZ - Wellbore #1 - Plan #3 (1-2-14)	11,683.6	11,645.2	464.6	203.8	1.782	SF
SRC Union C-5NHZ - Wellbore #1 - Plan #3 (1-2-14)	798.9	800.8	159.9	156.5	47.477	CC
SRC Union C-5NHZ - Wellbore #1 - Plan #3 (1-2-14)	1,000.0	1,001.7	160.3	156.0	37.456	ES
SRC Union C-5NHZ - Wellbore #1 - Plan #3 (1-2-14)	11,683.6	11,624.9	684.9	424.1	2.626	SF

Offset Design												
SRC Union Pad Sec.5-T2N-R68W - SRC Union 12-5CHZ - Wellbore #1 - Plan #3 (1-2-14)												
Survey Program: 0-MWD												
Reference												
Measured Depth (ft)	Vertical Depth (ft)	Measured Depth (ft)	Vertical Depth (ft)	Reference (ft)	Offset (ft)	Highside Toolface (°)	Offset Wellbore Centre +N/-S (ft)	Offset Wellbore Centre +E/-W (ft)	Distance Between Centres (ft)	Distance Between Ellipses (ft)	Minimum Separation (ft)	Separation Factor
0.0	0.0	2.0	2.0	0.0	0.0	69.07	35.7	93.3	99.9	99.9	0.00	N/A
100.0	100.0	102.0	102.0	0.1	0.1	69.07	35.7	93.3	99.9	99.7	0.23	435.899
200.0	200.0	202.0	202.0	0.3	0.3	69.07	35.7	93.3	99.9	99.3	0.68	147.224
300.0	300.0	302.0	302.0	0.6	0.6	69.07	35.7	93.3	99.9	98.8	1.13	88.569
400.0	400.0	402.0	402.0	0.8	0.8	69.07	35.7	93.3	99.9	98.4	1.58	63.336
500.0	500.0	502.0	502.0	1.0	1.0	69.07	35.7	93.3	99.9	97.9	2.03	49.292
600.0	600.0	602.0	602.0	1.2	1.2	69.07	35.7	93.3	99.9	97.5	2.48	40.346
700.0	700.0	702.0	702.0	1.5	1.5	89.43	35.7	93.3	99.9	97.0	2.93	34.158
746.5	746.5	748.5	748.5	1.6	1.6	90.00	35.7	93.3	99.9	96.8	3.13	31.887 CC
800.0	800.0	802.0	802.0	1.7	1.7	90.93	35.7	93.3	99.9	96.6	3.37	29.624
900.0	899.9	901.9	901.9	1.9	1.9	93.42	35.7	93.3	100.1	96.3	3.82	26.180 ES
1,000.0	999.7	1,001.7	1,001.7	2.1	2.1	96.88	35.7	93.3	100.6	96.4	4.28	23.526
1,100.0	1,099.4	1,101.4	1,101.4	2.4	2.4	101.24	35.7	93.3	101.9	97.1	4.74	21.498
1,200.0	1,198.9	1,200.9	1,200.9	2.6	2.6	106.37	35.7	93.3	104.2	99.0	5.21	20.003

CC - Min centre to center distance or convergent point, SF - min separation factor, ES - min ellipse separation

Company:	Synergy Resources	Local Co-ordinate Reference:	Well SRC Union A-5CHZ
Project:	SEC.5-T2N-R68W	TVD Reference:	WELL @ 4976.5ft (Ensign 131 RKB - 13.5')
Reference Site:	SRC Union Pad Sec.5-T2N-R68W	MD Reference:	WELL @ 4976.5ft (Ensign 131 RKB - 13.5')
Site Error:	0.0ft	North Reference:	True
Reference Well:	SRC Union A-5CHZ	Survey Calculation Method:	Minimum Curvature
Well Error:	0.0ft	Output errors are at	2.00 sigma
Reference Wellbore	Wellbore #1	Database:	Landmark
Reference Design:	Plan #3 (1-2-14)	Offset TVD Reference:	Offset Datum

Offset Design													Offset Site Error:	0.0 ft
Survey Program: 0-MWD													Offset Well Error:	0.0 ft
Reference		Offset		Semi Major Axis			Distance							Warning
Measured Depth (ft)	Vertical Depth (ft)	Measured Depth (ft)	Vertical Depth (ft)	Reference (ft)	Offset (ft)	Highside Toolface (°)	Offset Wellbore Centre +N/-S (ft)	+E/-W (ft)	Between Centres (ft)	Between Ellipses (ft)	Minimum Separation (ft)	Separation Factor		
1,300.0	1,298.3	1,300.3	1,300.3	2.9	2.8	112.08	35.7	93.3	107.9	102.3	5.68	18.988		
1,400.0	1,397.4	1,399.4	1,399.4	3.2	3.0	118.11	35.7	93.3	113.5	107.4	6.17	18.412		
1,500.0	1,496.3	1,498.3	1,498.3	3.5	3.3	124.17	35.7	93.3	121.2	114.6	6.65	18.238		
1,600.0	1,594.9	1,598.6	1,598.6	3.8	3.5	130.36	35.4	92.5	130.7	123.6	7.11	18.380		
1,700.0	1,693.3	1,698.7	1,698.6	4.1	3.7	136.58	34.5	90.1	141.2	133.6	7.55	18.707		
1,800.0	1,791.7	1,798.6	1,798.5	4.5	3.9	142.45	33.0	86.0	152.2	144.2	7.98	19.067		
1,900.0	1,890.1	1,898.3	1,898.0	4.9	4.1	148.00	30.9	80.4	163.6	155.2	8.41	19.454		
2,000.0	1,988.5	1,997.8	1,997.2	5.2	4.3	153.29	28.2	73.1	175.5	166.7	8.84	19.866		
2,100.0	2,086.9	2,097.0	2,095.9	5.6	4.5	158.34	24.9	64.2	188.1	178.9	9.27	20.298		
2,200.0	2,185.2	2,195.8	2,194.1	6.0	4.7	163.19	21.0	53.8	201.5	191.8	9.71	20.746		
2,300.0	2,283.6	2,294.2	2,291.6	6.3	5.0	167.84	16.6	41.8	215.8	205.6	10.18	21.203		
2,400.0	2,382.0	2,391.6	2,388.1	6.7	5.2	172.10	11.8	29.1	231.2	220.5	10.66	21.681		
2,500.0	2,480.4	2,489.0	2,484.6	7.1	5.5	175.82	7.1	16.3	247.7	236.5	11.17	22.177		
2,600.0	2,578.8	2,586.4	2,581.0	7.5	5.8	179.08	2.4	3.6	265.1	253.4	11.69	22.673		
2,700.0	2,677.1	2,683.8	2,677.5	7.9	6.1	-178.07	-2.3	-9.1	283.3	271.1	12.23	23.161		
2,800.0	2,775.5	2,781.2	2,773.9	8.3	6.4	-175.55	-7.1	-21.9	302.1	289.3	12.78	23.633		
2,900.0	2,873.9	2,878.6	2,870.4	8.7	6.6	-173.34	-11.8	-34.6	321.4	308.0	13.34	24.085		
3,000.0	2,972.3	2,976.0	2,966.8	9.1	6.9	-171.37	-16.5	-47.4	341.0	327.1	13.91	24.516		
3,100.0	3,070.7	3,073.4	3,063.2	9.4	7.3	-169.61	-21.3	-60.1	361.1	346.6	14.49	24.926		
3,200.0	3,169.1	3,170.8	3,159.7	9.8	7.6	-168.04	-26.0	-72.9	381.4	366.4	15.07	25.314		
3,300.0	3,267.4	3,268.2	3,256.1	10.2	7.9	-166.63	-30.7	-85.6	402.0	386.4	15.65	25.682		
3,400.0	3,365.8	3,365.6	3,352.6	10.6	8.2	-165.36	-35.5	-98.3	422.8	406.6	16.24	26.030		
3,500.0	3,464.2	3,463.0	3,449.0	11.0	8.5	-164.20	-40.2	-111.1	443.8	427.0	16.84	26.359		
3,600.0	3,562.6	3,560.4	3,545.5	11.4	8.8	-163.15	-44.9	-123.8	464.9	447.5	17.43	26.670		
3,700.0	3,661.0	3,657.8	3,641.9	11.8	9.1	-162.19	-49.6	-136.6	486.2	468.2	18.03	26.965		
3,800.0	3,759.3	3,755.2	3,738.4	12.2	9.4	-161.31	-54.4	-149.3	507.6	489.0	18.63	27.245		
3,900.0	3,857.7	3,852.6	3,834.8	12.6	9.8	-160.50	-59.1	-162.0	529.1	509.9	19.23	27.510		
4,000.0	3,956.1	3,950.0	3,931.2	13.0	10.1	-159.75	-63.8	-174.8	550.7	530.9	19.84	27.761		
4,100.0	4,054.5	4,047.4	4,027.7	13.4	10.4	-159.06	-68.6	-187.5	572.4	552.0	20.44	27.999		
4,200.0	4,152.9	4,144.8	4,124.1	13.8	10.7	-158.42	-73.3	-200.3	594.2	573.1	21.05	28.226		
4,300.0	4,251.3	4,242.2	4,220.6	14.2	11.1	-157.83	-78.0	-213.0	616.0	594.3	21.66	28.442		
4,400.0	4,349.6	4,339.6	4,317.0	14.6	11.4	-157.27	-82.8	-225.8	637.9	615.6	22.27	28.647		
4,500.0	4,448.0	4,437.0	4,413.5	15.0	11.7	-156.76	-87.5	-238.5	659.8	636.9	22.88	28.843		
4,600.0	4,546.4	4,534.4	4,509.9	15.4	12.1	-156.27	-92.2	-251.2	681.8	658.3	23.49	29.029		
4,700.0	4,644.8	4,631.8	4,606.3	15.8	12.4	-155.82	-96.9	-264.0	703.8	679.7	24.10	29.207		
4,800.0	4,743.2	4,729.5	4,703.1	16.2	12.7	-155.39	-101.7	-276.8	725.8	701.1	24.71	29.378		
4,900.0	4,841.5	4,839.0	4,811.8	16.6	13.0	-155.10	-106.2	-289.0	747.1	721.8	25.28	29.548		
5,000.0	4,939.9	4,949.3	4,921.8	17.0	13.2	-155.11	-109.4	-297.5	766.8	741.0	25.80	29.718		
5,100.0	5,038.3	5,060.2	5,032.6	17.4	13.4	-155.41	-111.0	-301.9	784.9	758.6	26.28	29.866		
5,200.0	5,136.7	5,166.3	5,138.7	17.8	13.6	-155.93	-111.3	-302.7	801.6	774.8	26.72	29.997		
5,300.0	5,235.1	5,264.7	5,237.1	18.2	13.8	-156.44	-111.3	-302.7	818.0	790.9	27.15	30.126		
5,400.0	5,333.5	5,363.1	5,335.5	18.6	14.0	-156.93	-111.3	-302.7	834.5	806.9	27.59	30.250		
5,500.0	5,431.8	5,461.5	5,433.8	19.0	14.1	-157.40	-111.3	-302.7	851.1	823.0	28.02	30.372		
5,600.0	5,530.3	5,559.9	5,532.3	19.3	14.3	-157.90	-111.3	-302.7	867.4	838.9	28.47	30.463		
5,700.0	5,629.2	5,658.8	5,631.2	19.6	14.5	-158.36	-111.3	-302.7	881.0	852.1	28.89	30.491		
5,800.0	5,728.6	5,758.2	5,730.6	19.8	14.6	-158.71	-111.3	-302.7	891.4	862.1	29.28	30.441		
5,900.0	5,828.3	5,857.9	5,830.3	20.1	14.8	-158.94	-111.3	-302.7	898.6	869.0	29.64	30.316		
6,000.0	5,928.2	5,957.8	5,930.2	20.2	15.0	-159.06	-111.3	-302.7	902.6	872.6	29.97	30.117		
6,100.0	6,028.2	6,057.8	6,030.2	20.3	15.2	-178.94	-111.3	-302.7	903.5	870.4	33.07	27.323		
6,200.0	6,128.2	6,157.8	6,130.2	20.5	15.4	-178.94	-111.3	-302.7	903.5	870.0	33.41	27.040		
6,300.0	6,228.2	6,257.8	6,230.2	20.6	15.5	-178.94	-111.3	-302.7	903.5	869.7	33.76	26.761		
6,400.0	6,328.2	6,357.8	6,330.2	20.8	15.7	-178.94	-111.3	-302.7	903.5	869.3	34.11	26.485		

CC - Min centre to center distance or convergent point, SF - min separation factor, ES - min ellipse separation

Company:	Synergy Resources	Local Co-ordinate Reference:	Well SRC Union A-5CHZ
Project:	SEC.5-T2N-R68W	TVD Reference:	WELL @ 4976.5ft (Ensign 131 RKB - 13.5')
Reference Site:	SRC Union Pad Sec.5-T2N-R68W	MD Reference:	WELL @ 4976.5ft (Ensign 131 RKB - 13.5')
Site Error:	0.0ft	North Reference:	True
Reference Well:	SRC Union A-5CHZ	Survey Calculation Method:	Minimum Curvature
Well Error:	0.0ft	Output errors are at	2.00 sigma
Reference Wellbore	Wellbore #1	Database:	Landmark
Reference Design:	Plan #3 (1-2-14)	Offset TVD Reference:	Offset Datum

Offset Design												Offset Site Error:	0.0 ft
Survey Program: 0-MWD												Offset Well Error:	0.0 ft
Reference		Offset		Semi Major Axis			Distance						Warning
Measured Depth (ft)	Vertical Depth (ft)	Measured Depth (ft)	Vertical Depth (ft)	Reference (ft)	Offset (ft)	Highside Toolface (°)	Offset Wellbore Centre +N/-S (ft)	+E/-W (ft)	Between Centres (ft)	Between Ellipses (ft)	Minimum Separation (ft)	Separation Factor	
6,466.9	6,395.0	6,424.7	6,397.1	20.9	15.9	90.26	-111.3	-302.5	903.5	871.8	31.67	28.530	
6,500.0	6,428.1	6,458.0	6,430.3	20.9	15.9	90.17	-111.3	-301.1	903.5	871.7	31.77	28.437	
6,600.0	6,527.2	6,558.3	6,529.6	21.0	16.0	90.15	-111.5	-287.7	903.5	871.5	31.96	28.268	
6,700.0	6,623.4	6,658.5	6,626.0	21.0	16.0	90.12	-112.0	-260.5	903.5	871.4	32.03	28.203	
6,800.0	6,715.0	6,758.8	6,717.7	21.0	16.0	90.10	-112.6	-220.1	903.5	871.4	32.06	28.180	
6,900.0	6,800.2	6,858.9	6,802.7	21.0	16.0	90.07	-113.4	-167.4	903.5	871.3	32.15	28.106	
7,000.0	6,877.2	6,959.0	6,879.6	20.9	16.1	90.04	-114.4	-103.4	903.5	871.1	32.43	27.857	
7,100.0	6,944.7	7,059.1	6,946.7	20.9	16.3	90.01	-115.6	-29.3	903.5	870.4	33.10	27.300	
7,200.0	7,001.2	7,159.0	7,002.8	20.9	16.8	89.98	-116.9	53.3	903.5	869.3	34.29	26.348	
7,300.0	7,045.7	7,258.9	7,046.9	21.0	17.7	89.95	-118.3	142.9	903.6	867.4	36.13	25.008	
7,400.0	7,077.3	7,358.8	7,078.1	21.3	18.9	89.92	-119.7	237.6	903.6	865.0	38.62	23.394	
7,500.0	7,095.5	7,458.6	7,095.8	22.3	20.4	89.89	-121.3	335.7	903.6	861.9	41.70	21.670	
7,600.0	7,100.0	7,558.4	7,100.0	23.9	22.2	89.87	-122.8	435.4	903.6	858.4	45.22	19.984	
7,700.0	7,100.0	7,658.4	7,100.0	25.7	24.1	89.87	-124.4	535.3	903.7	854.6	49.11	18.399	
7,800.0	7,100.0	7,758.4	7,100.0	27.8	26.2	89.87	-125.9	635.3	903.7	850.4	53.31	16.953	
7,900.0	7,100.0	7,858.4	7,100.0	30.0	28.5	89.87	-127.5	735.3	903.7	846.0	57.74	15.652	
8,000.0	7,100.0	7,958.4	7,100.0	32.2	30.8	89.87	-129.1	835.3	903.8	841.4	62.36	14.492	
8,100.0	7,100.0	8,058.4	7,100.0	34.6	33.2	89.87	-130.6	935.3	903.8	836.6	67.14	13.461	
8,200.0	7,100.0	8,158.4	7,100.0	37.0	35.6	89.87	-132.2	1,035.3	903.8	831.8	72.04	12.546	
8,300.0	7,100.0	8,258.4	7,100.0	39.5	38.1	89.87	-133.7	1,135.3	903.8	826.8	77.03	11.733	
8,400.0	7,100.0	8,358.4	7,100.0	42.0	40.7	89.87	-135.3	1,235.3	903.9	821.7	82.11	11.008	
8,500.0	7,100.0	8,458.4	7,100.0	44.5	43.2	89.87	-136.9	1,335.3	903.9	816.6	87.25	10.359	
8,600.0	7,100.0	8,558.4	7,100.0	47.1	45.9	89.87	-138.4	1,435.2	903.9	811.5	92.45	9.777	
8,700.0	7,100.0	8,658.4	7,100.0	49.7	48.5	89.87	-140.0	1,535.2	903.9	806.2	97.70	9.253	
8,800.0	7,100.0	8,758.4	7,100.0	52.3	51.1	89.87	-141.5	1,635.2	904.0	801.0	102.98	8.778	
8,900.0	7,100.0	8,858.4	7,100.0	55.0	53.8	89.87	-143.1	1,735.2	904.0	795.7	108.30	8.347	
9,000.0	7,100.0	8,958.4	7,100.0	57.6	56.5	89.87	-144.7	1,835.2	904.0	790.4	113.64	7.955	
9,100.0	7,100.0	9,058.4	7,100.0	60.3	59.1	89.87	-146.2	1,935.2	904.0	785.0	119.01	7.596	
9,200.0	7,100.0	9,158.4	7,100.0	63.0	61.8	89.87	-147.8	2,035.2	904.1	779.7	124.41	7.267	
9,300.0	7,100.0	9,258.4	7,100.0	65.6	64.6	89.87	-149.3	2,135.2	904.1	774.3	129.82	6.964	
9,400.0	7,100.0	9,358.4	7,100.0	68.3	67.3	89.87	-150.9	2,235.1	904.1	768.9	135.25	6.685	
9,500.0	7,100.0	9,458.4	7,100.0	71.1	70.0	89.87	-152.5	2,335.1	904.2	763.5	140.69	6.427	
9,600.0	7,100.0	9,558.4	7,100.0	73.8	72.7	89.87	-154.0	2,435.1	904.2	758.0	146.14	6.187	
9,700.0	7,100.0	9,658.4	7,100.0	76.5	75.5	89.87	-155.6	2,535.1	904.2	752.6	151.61	5.964	
9,800.0	7,100.0	9,758.4	7,100.0	79.2	78.2	89.87	-157.1	2,635.1	904.2	747.1	157.09	5.756	
9,900.0	7,100.0	9,858.4	7,100.0	81.9	80.9	89.87	-158.7	2,735.1	904.3	741.7	162.58	5.562	
10,000.0	7,100.0	9,958.4	7,100.0	84.7	83.7	89.87	-160.3	2,835.1	904.3	736.2	168.07	5.380	
10,100.0	7,100.0	10,058.4	7,100.0	87.4	86.5	89.87	-161.8	2,935.1	904.3	730.7	173.58	5.210	
10,200.0	7,100.0	10,158.4	7,100.0	90.2	89.2	89.87	-163.4	3,035.0	904.3	725.2	179.09	5.050	
10,300.0	7,100.0	10,258.4	7,100.0	92.9	92.0	89.87	-164.9	3,135.0	904.4	719.8	184.61	4.899	
10,400.0	7,100.0	10,358.4	7,100.0	95.7	94.7	89.87	-166.5	3,235.0	904.4	714.3	190.13	4.757	
10,500.0	7,100.0	10,458.4	7,100.0	98.4	97.5	89.87	-168.1	3,335.0	904.4	708.8	195.66	4.622	
10,600.0	7,100.0	10,558.4	7,100.0	101.2	100.3	89.87	-169.6	3,435.0	904.4	703.3	201.19	4.495	
10,700.0	7,100.0	10,658.4	7,100.0	104.0	103.0	89.87	-171.2	3,535.0	904.5	697.7	206.73	4.375	
10,800.0	7,100.0	10,758.4	7,100.0	106.7	105.8	89.87	-172.7	3,635.0	904.5	692.2	212.27	4.261	
10,900.0	7,100.0	10,858.4	7,100.0	109.5	108.6	89.87	-174.3	3,735.0	904.5	686.7	217.81	4.153	
11,000.0	7,100.0	10,958.4	7,100.0	112.3	111.4	89.87	-175.9	3,834.9	904.5	681.2	223.36	4.050	
11,100.0	7,100.0	11,058.4	7,100.0	115.0	114.1	89.87	-177.4	3,934.9	904.6	675.7	228.92	3.952	
11,200.0	7,100.0	11,158.4	7,100.0	117.8	116.9	89.87	-179.0	4,034.9	904.6	670.1	234.47	3.858	
11,300.0	7,100.0	11,258.4	7,100.0	120.6	119.7	89.87	-180.5	4,134.9	904.6	664.6	240.03	3.769	
11,400.0	7,100.0	11,358.4	7,100.0	123.3	122.5	89.87	-182.1	4,234.9	904.7	659.1	245.59	3.684	
11,500.0	7,100.0	11,458.4	7,100.0	126.1	125.3	89.87	-183.7	4,334.9	904.7	653.5	251.15	3.602	

CC - Min centre to center distance or convergent point, SF - min separation factor, ES - min ellipse separation

Company:	Synergy Resources	Local Co-ordinate Reference:	Well SRC Union A-5CHZ
Project:	SEC.5-T2N-R68W	TVD Reference:	WELL @ 4976.5ft (Ensign 131 RKB - 13.5')
Reference Site:	SRC Union Pad Sec.5-T2N-R68W	MD Reference:	WELL @ 4976.5ft (Ensign 131 RKB - 13.5')
Site Error:	0.0ft	North Reference:	True
Reference Well:	SRC Union A-5CHZ	Survey Calculation Method:	Minimum Curvature
Well Error:	0.0ft	Output errors are at	2.00 sigma
Reference Wellbore	Wellbore #1	Database:	Landmark
Reference Design:	Plan #3 (1-2-14)	Offset TVD Reference:	Offset Datum

Offset Design SRC Union Pad Sec.5-T2N-R68W - SRC Union 12-5CHZ - Wellbore #1 - Plan #3 (1-2-14)												Offset Site Error:	0.0 ft
Survey Program: 0-MWD												Offset Well Error:	0.0 ft
Reference	Offset	Semi Major Axis			Distance								Warning
Measured Depth (ft)	Vertical Depth (ft)	Measured Depth (ft)	Vertical Depth (ft)	Reference (ft)	Offset (ft)	Highside Toolface (°)	Offset Wellbore Centre +N/-S (ft)	+E/-W (ft)	Between Centres (ft)	Between Ellipses (ft)	Minimum Separation (ft)	Separation Factor	
11,600.0	7,100.0	11,558.4	7,100.0	128.9	128.0	89.87	-185.2	4,434.9	904.7	648.0	256.72	3.524	
11,645.1	7,100.0	11,603.5	7,100.0	130.2	129.3	89.87	-185.9	4,480.0	904.7	645.5	259.23	3.490	
11,683.6	7,100.0	11,639.2	7,100.0	131.2	130.3	89.87	-186.5	4,515.7	904.7	643.4	261.29	3.462 SF	

Company:	Synergy Resources	Local Co-ordinate Reference:	Well SRC Union A-5CHZ
Project:	SEC.5-T2N-R68W	TVD Reference:	WELL @ 4976.5ft (Ensign 131 RKB - 13.5')
Reference Site:	SRC Union Pad Sec.5-T2N-R68W	MD Reference:	WELL @ 4976.5ft (Ensign 131 RKB - 13.5')
Site Error:	0.0ft	North Reference:	True
Reference Well:	SRC Union A-5CHZ	Survey Calculation Method:	Minimum Curvature
Well Error:	0.0ft	Output errors are at	2.00 sigma
Reference Wellbore	Wellbore #1	Database:	Landmark
Reference Design:	Plan #3 (1-2-14)	Offset TVD Reference:	Offset Datum

Offset Design												Offset Site Error:	0.0 ft
Survey Program: 0-MWD												Offset Well Error:	0.0 ft
Reference	Offset	Semi Major Axis		Distance		Warning							
Measured Depth (ft)	Vertical Depth (ft)	Measured Depth (ft)	Vertical Depth (ft)	Reference (ft)	Offset (ft)	Highside Toolface (°)	Offset Wellbore Centre +N/-S (ft)	+E/-W (ft)	Between Centres (ft)	Between Ellipses (ft)	Minimum Separation (ft)	Separation Factor	
0.0	0.0	1.0	1.0	0.0	0.0	69.08	14.2	37.2	39.8	39.8	0.00	N/A	
100.0	100.0	101.0	101.0	0.1	0.1	69.08	14.2	37.2	39.8	39.6	0.23	175.284	
200.0	200.0	201.0	201.0	0.3	0.3	69.08	14.2	37.2	39.8	39.1	0.68	58.816	
300.0	300.0	301.0	301.0	0.6	0.6	69.08	14.2	37.2	39.8	38.7	1.13	35.337	
400.0	400.0	401.0	401.0	0.8	0.8	69.08	14.2	37.2	39.8	38.2	1.58	25.255	
500.0	500.0	501.0	501.0	1.0	1.0	69.08	14.2	37.2	39.8	37.8	2.03	19.649	
600.0	600.0	601.0	601.0	1.2	1.2	69.08	14.2	37.2	39.8	37.3	2.47	16.080	
692.0	692.0	693.0	693.0	1.4	1.4	90.00	14.2	37.2	39.8	36.9	2.89	13.780	CC
700.0	700.0	701.0	701.0	1.5	1.5	90.19	14.2	37.2	39.8	36.9	2.92	13.611	
800.0	800.0	801.0	801.0	1.7	1.7	93.95	14.2	37.2	39.9	36.5	3.37	11.831	ES
900.0	899.9	900.9	900.9	1.9	1.9	100.12	14.2	37.2	40.4	36.6	3.82	10.578	
1,000.0	999.7	1,000.7	1,000.7	2.1	2.1	108.34	14.2	37.2	41.9	37.6	4.27	9.809	
1,100.0	1,099.4	1,100.4	1,100.4	2.4	2.4	117.81	14.2	37.2	45.0	40.3	4.73	9.516	
1,200.0	1,198.9	1,199.9	1,199.9	2.6	2.6	127.46	14.2	37.2	50.2	45.0	5.19	9.679	
1,300.0	1,298.3	1,299.3	1,299.3	2.9	2.8	136.32	14.2	37.2	57.8	52.2	5.64	10.245	
1,400.0	1,397.4	1,398.6	1,398.6	3.2	3.0	144.58	13.6	36.6	67.7	61.7	6.07	11.157	
1,500.0	1,496.3	1,497.4	1,497.4	3.5	3.2	152.46	11.8	34.8	80.2	73.7	6.47	12.381	
1,600.0	1,594.9	1,595.6	1,595.5	3.8	3.4	159.53	8.8	31.8	95.4	88.5	6.88	13.873	
1,700.0	1,693.3	1,693.1	1,692.8	4.1	3.6	165.65	4.7	27.6	113.3	106.0	7.29	15.533	
1,800.0	1,791.7	1,790.1	1,789.5	4.5	3.8	170.78	-0.6	22.4	132.7	124.9	7.73	17.171	
1,900.0	1,890.1	1,886.6	1,885.6	4.9	4.0	175.16	-7.0	16.0	153.4	145.2	8.17	18.769	
2,000.0	1,988.5	1,982.5	1,980.9	5.2	4.2	178.97	-14.5	8.5	175.4	166.8	8.63	20.320	
2,100.0	2,086.9	2,077.7	2,075.3	5.6	4.4	-177.66	-23.1	0.0	198.8	189.7	9.11	21.823	
2,200.0	2,185.2	2,173.3	2,170.0	6.0	4.7	-174.67	-32.7	-9.6	223.4	213.8	9.60	23.263	
2,300.0	2,283.6	2,269.6	2,265.3	6.3	5.0	-172.23	-42.4	-19.2	248.6	238.5	10.11	24.590	
2,400.0	2,382.0	2,365.9	2,360.6	6.7	5.2	-170.24	-52.1	-28.9	274.1	263.5	10.62	25.800	
2,500.0	2,480.4	2,462.2	2,455.9	7.1	5.5	-168.59	-61.8	-38.6	299.8	288.7	11.14	26.913	
2,600.0	2,578.8	2,558.5	2,551.2	7.5	5.8	-167.19	-71.5	-48.3	325.8	314.1	11.67	27.929	
2,700.0	2,677.1	2,654.8	2,646.5	7.9	6.1	-166.01	-81.2	-58.0	351.9	339.7	12.19	28.859	
2,800.0	2,775.5	2,751.1	2,741.9	8.3	6.4	-164.98	-90.9	-67.7	378.2	365.4	12.73	29.713	
2,900.0	2,873.9	2,847.4	2,837.2	8.7	6.7	-164.09	-100.7	-77.4	404.5	391.2	13.26	30.499	
3,000.0	2,972.3	2,943.7	2,932.5	9.1	7.0	-163.31	-110.4	-87.1	430.9	417.1	13.80	31.223	
3,100.0	3,070.7	3,040.0	3,027.8	9.4	7.3	-162.61	-120.1	-96.7	457.4	443.1	14.34	31.892	
3,200.0	3,169.1	3,136.3	3,123.1	9.8	7.6	-162.00	-129.8	-106.4	483.9	469.1	14.89	32.511	
3,300.0	3,267.4	3,232.5	3,218.4	10.2	8.0	-161.45	-139.5	-116.1	510.5	495.1	15.43	33.085	
3,400.0	3,365.8	3,328.8	3,313.7	10.6	8.3	-160.95	-149.2	-125.8	537.1	521.2	15.98	33.619	
3,500.0	3,464.2	3,425.1	3,409.0	11.0	8.6	-160.50	-158.9	-135.5	563.8	547.3	16.53	34.117	
3,600.0	3,562.6	3,521.4	3,504.3	11.4	8.9	-160.09	-168.7	-145.2	590.5	573.4	17.08	34.582	
3,700.0	3,661.0	3,617.7	3,599.6	11.8	9.2	-159.71	-178.4	-154.9	617.2	599.6	17.63	35.017	
3,800.0	3,759.3	3,714.0	3,694.9	12.2	9.6	-159.37	-188.1	-164.5	643.9	625.8	18.18	35.424	
3,900.0	3,857.7	3,810.3	3,790.2	12.6	9.9	-159.05	-197.8	-174.2	670.7	652.0	18.73	35.806	
4,000.0	3,956.1	3,906.6	3,885.5	13.0	10.2	-158.76	-207.5	-183.9	697.5	678.2	19.29	36.166	
4,100.0	4,054.5	4,002.9	3,980.9	13.4	10.6	-158.49	-217.2	-193.6	724.3	704.4	19.84	36.505	
4,200.0	4,152.9	4,099.2	4,076.2	13.8	10.9	-158.24	-227.0	-203.3	751.1	730.7	20.40	36.824	
4,300.0	4,251.3	4,195.4	4,171.5	14.2	11.2	-158.00	-236.7	-213.0	777.9	756.9	20.95	37.126	
4,400.0	4,349.6	4,291.7	4,266.8	14.6	11.6	-157.78	-246.4	-222.7	804.7	783.2	21.51	37.411	
4,500.0	4,448.0	4,388.0	4,362.1	15.0	11.9	-157.58	-256.1	-232.4	831.6	809.5	22.07	37.682	
4,600.0	4,546.4	4,484.3	4,457.4	15.4	12.2	-157.39	-265.8	-242.0	858.4	835.8	22.63	37.938	
4,700.0	4,644.8	4,580.6	4,552.7	15.8	12.5	-157.21	-275.5	-251.7	885.3	862.1	23.19	38.182	
4,800.0	4,743.2	4,676.9	4,648.0	16.2	12.9	-157.04	-285.2	-261.4	912.1	888.4	23.75	38.413	
4,900.0	4,841.5	4,773.2	4,743.3	16.6	13.2	-156.88	-295.0	-271.1	939.0	914.7	24.31	38.633	
5,000.0	4,939.9	4,869.5	4,838.6	17.0	13.6	-156.73	-304.7	-280.8	965.9	941.0	24.87	38.843	

CC - Min centre to center distance or convergent point, SF - min separation factor, ES - min ellipse separation

Company:	Synergy Resources	Local Co-ordinate Reference:	Well SRC Union A-5CHZ
Project:	SEC.5-T2N-R68W	TVD Reference:	WELL @ 4976.5ft (Ensign 131 RKB - 13.5')
Reference Site:	SRC Union Pad Sec.5-T2N-R68W	MD Reference:	WELL @ 4976.5ft (Ensign 131 RKB - 13.5')
Site Error:	0.0ft	North Reference:	True
Reference Well:	SRC Union A-5CHZ	Survey Calculation Method:	Minimum Curvature
Well Error:	0.0ft	Output errors are at	2.00 sigma
Reference Wellbore	Wellbore #1	Database:	Landmark
Reference Design:	Plan #3 (1-2-14)	Offset TVD Reference:	Offset Datum

Offset Design												Offset Site Error:	0.0 ft
Survey Program: 0-MWD												Offset Well Error:	0.0 ft
Reference		Offset		Semi Major Axis			Distance						
Measured Depth (ft)	Vertical Depth (ft)	Measured Depth (ft)	Vertical Depth (ft)	Reference (ft)	Offset (ft)	Highside Toolface (°)	Offset Wellbore Centre +N/-S (ft)	+E/-W (ft)	Between Centres (ft)	Between Ellipses (ft)	Minimum Separation (ft)	Separation Factor	Warning
5,100.0	5,038.3	4,980.6	4,948.7	17.4	13.9	-156.59	-315.5	-291.6	992.4	967.0	25.45	38.997	
5,200.0	5,136.7	5,112.0	5,079.4	17.8	14.2	-156.62	-324.8	-300.8	1,016.2	990.2	26.01	39.067	
5,300.0	5,235.1	5,245.4	5,212.6	18.2	14.5	-156.89	-329.8	-305.9	1,036.7	1,010.1	26.54	39.062	
5,400.0	5,333.5	5,367.2	5,334.5	18.6	14.7	-157.31	-330.8	-306.8	1,053.9	1,026.9	27.02	39.001	
5,500.0	5,431.8	5,465.6	5,432.8	19.0	14.8	-157.68	-330.8	-306.8	1,070.5	1,043.1	27.47	38.974	
5,600.0	5,530.3	5,564.1	5,531.3	19.3	15.0	-158.08	-330.8	-306.8	1,086.9	1,058.9	27.94	38.907	
5,700.0	5,629.2	5,663.0	5,630.2	19.6	15.1	-158.47	-330.8	-306.8	1,100.5	1,072.1	28.38	38.782	
5,800.0	5,728.6	5,762.3	5,729.6	19.8	15.3	-158.76	-330.8	-306.8	1,111.0	1,082.2	28.78	38.595	
5,900.0	5,828.3	5,862.0	5,829.3	20.1	15.4	-158.95	-330.8	-306.8	1,118.2	1,089.0	29.16	38.348	
6,000.0	5,928.2	5,961.9	5,929.2	20.2	15.6	-159.06	-330.8	-306.8	1,122.1	1,092.6	29.50	38.042	
6,100.0	6,028.2	6,061.9	6,029.2	20.3	15.8	-178.94	-330.8	-306.8	1,123.0	1,088.8	34.20	32.834	
6,200.0	6,128.2	6,161.9	6,129.2	20.5	15.9	-178.94	-330.8	-306.8	1,123.0	1,088.5	34.52	32.528	
6,300.0	6,228.2	6,261.9	6,229.2	20.6	16.1	-178.94	-330.8	-306.8	1,123.0	1,088.1	34.85	32.226	
6,400.0	6,328.2	6,361.9	6,329.2	20.8	16.3	-178.94	-330.8	-306.8	1,123.0	1,087.8	35.17	31.926	
6,500.0	6,428.1	6,462.2	6,429.3	20.9	16.4	90.12	-330.8	-304.1	1,123.0	1,091.7	31.28	35.898	
6,525.2	6,453.2	6,487.4	6,454.3	20.9	16.4	90.08	-330.9	-301.5	1,123.0	1,091.6	31.34	35.837	
6,600.0	6,527.2	6,562.2	6,528.0	21.0	16.5	89.98	-331.1	-288.4	1,123.0	1,091.5	31.47	35.688	
6,700.0	6,623.4	6,661.9	6,623.3	21.0	16.5	89.85	-331.5	-259.3	1,123.0	1,091.5	31.54	35.603	
6,800.0	6,715.0	6,761.3	6,713.3	21.0	16.5	89.73	-332.2	-217.4	1,123.0	1,091.4	31.58	35.562	
6,900.0	6,800.2	6,860.3	6,796.4	21.0	16.4	89.61	-333.0	-163.7	1,123.0	1,091.4	31.69	35.443	
7,000.0	6,877.2	6,959.0	6,871.1	20.9	16.4	89.49	-334.0	-99.2	1,123.1	1,091.1	32.01	35.086	
7,100.0	6,944.7	7,057.5	6,936.0	20.9	16.4	89.39	-335.2	-25.4	1,123.1	1,090.4	32.72	34.328	
7,200.0	7,001.2	7,155.7	6,990.1	20.9	16.6	89.30	-336.5	56.5	1,123.2	1,089.2	33.96	33.069	
7,300.0	7,045.7	7,253.6	7,032.4	21.0	17.4	89.22	-337.9	144.8	1,123.2	1,087.4	35.85	31.332	
7,400.0	7,077.3	7,351.4	7,062.2	21.3	18.7	89.15	-339.3	237.8	1,123.3	1,084.9	38.38	29.267	
7,500.0	7,095.5	7,449.1	7,079.0	22.3	20.2	89.11	-340.8	333.9	1,123.3	1,081.8	41.48	27.081	
7,600.0	7,100.0	7,547.2	7,083.0	23.9	22.1	89.08	-342.3	431.9	1,123.3	1,078.3	45.03	24.947	
7,700.0	7,100.0	7,647.2	7,083.0	25.7	24.1	89.08	-343.9	531.9	1,123.4	1,074.4	48.97	22.939	
7,800.0	7,100.0	7,747.2	7,083.0	27.8	26.2	89.08	-345.5	631.9	1,123.4	1,070.2	53.21	21.114	
7,900.0	7,100.0	7,847.2	7,083.0	30.0	28.5	89.08	-347.0	731.9	1,123.4	1,065.8	57.68	19.478	
8,000.0	7,100.0	7,947.2	7,083.0	32.2	30.8	89.08	-348.6	831.8	1,123.5	1,061.1	62.33	18.024	
8,100.0	7,100.0	8,047.2	7,083.0	34.6	33.3	89.08	-350.2	931.8	1,123.5	1,056.4	67.14	16.735	
8,200.0	7,100.0	8,147.2	7,083.0	37.0	35.7	89.08	-351.7	1,031.8	1,123.5	1,051.5	72.06	15.592	
8,300.0	7,100.0	8,247.2	7,083.0	39.5	38.3	89.08	-353.3	1,131.8	1,123.6	1,046.5	77.07	14.578	
8,400.0	7,100.0	8,347.2	7,083.0	42.0	40.8	89.08	-354.9	1,231.8	1,123.6	1,041.4	82.17	13.674	
8,500.0	7,100.0	8,447.2	7,083.0	44.5	43.4	89.08	-356.4	1,331.8	1,123.6	1,036.3	87.32	12.867	
8,600.0	7,100.0	8,547.2	7,083.0	47.1	46.0	89.08	-358.0	1,431.8	1,123.6	1,031.1	92.54	12.143	
8,700.0	7,100.0	8,647.2	7,083.0	49.7	48.7	89.08	-359.5	1,531.8	1,123.7	1,025.9	97.79	11.490	
8,800.0	7,100.0	8,747.2	7,083.0	52.3	51.3	89.08	-361.1	1,631.7	1,123.7	1,020.6	103.09	10.901	
8,900.0	7,100.0	8,847.2	7,083.0	55.0	54.0	89.08	-362.7	1,731.7	1,123.7	1,015.3	108.41	10.365	
9,000.0	7,100.0	8,947.2	7,083.0	57.6	56.7	89.08	-364.2	1,831.7	1,123.8	1,010.0	113.77	9.878	
9,100.0	7,100.0	9,047.2	7,083.0	60.3	59.4	89.08	-365.8	1,931.7	1,123.8	1,004.7	119.14	9.432	
9,200.0	7,100.0	9,147.2	7,083.0	63.0	62.1	89.08	-367.4	2,031.7	1,123.8	999.3	124.54	9.024	
9,300.0	7,100.0	9,247.2	7,083.0	65.6	64.8	89.08	-368.9	2,131.7	1,123.9	993.9	129.96	8.648	
9,400.0	7,100.0	9,347.2	7,083.0	68.3	67.5	89.08	-370.5	2,231.7	1,123.9	988.5	135.39	8.301	
9,500.0	7,100.0	9,447.2	7,083.0	71.1	70.2	89.08	-372.1	2,331.7	1,123.9	983.1	140.84	7.980	
9,600.0	7,100.0	9,547.2	7,083.0	73.8	73.0	89.08	-373.6	2,431.7	1,123.9	977.6	146.30	7.682	
9,700.0	7,100.0	9,647.2	7,083.0	76.5	75.7	89.08	-375.2	2,531.6	1,124.0	972.2	151.77	7.406	
9,800.0	7,100.0	9,747.2	7,083.0	79.2	78.5	89.08	-376.7	2,631.6	1,124.0	966.7	157.26	7.148	
9,900.0	7,100.0	9,847.2	7,083.0	81.9	81.2	89.08	-378.3	2,731.6	1,124.0	961.3	162.75	6.907	
10,000.0	7,100.0	9,947.2	7,083.0	84.7	84.0	89.08	-379.9	2,831.6	1,124.1	955.8	168.25	6.681	
10,100.0	7,100.0	10,047.2	7,083.0	87.4	86.7	89.08	-381.4	2,931.6	1,124.1	950.3	173.75	6.469	

CC - Min centre to center distance or convergent point, SF - min separation factor, ES - min ellipse separation

Company:	Synergy Resources	Local Co-ordinate Reference:	Well SRC Union A-5CHZ
Project:	SEC.5-T2N-R68W	TVD Reference:	WELL @ 4976.5ft (Ensign 131 RKB - 13.5')
Reference Site:	SRC Union Pad Sec.5-T2N-R68W	MD Reference:	WELL @ 4976.5ft (Ensign 131 RKB - 13.5')
Site Error:	0.0ft	North Reference:	True
Reference Well:	SRC Union A-5CHZ	Survey Calculation Method:	Minimum Curvature
Well Error:	0.0ft	Output errors are at	2.00 sigma
Reference Wellbore	Wellbore #1	Database:	Landmark
Reference Design:	Plan #3 (1-2-14)	Offset TVD Reference:	Offset Datum

Offset Design SRC Union Pad Sec.5-T2N-R68W - SRC Union 12-5NHZ - Wellbore #1 - Plan #3 (1-2-14)												Offset Site Error:	0.0 ft
Survey Program: 0-MWD												Offset Well Error:	0.0 ft
Reference		Offset		Semi Major Axis			Distance						
Measured Depth (ft)	Vertical Depth (ft)	Measured Depth (ft)	Vertical Depth (ft)	Reference (ft)	Offset (ft)	Highside Toolface (°)	Offset Wellbore Centre +N/-S (ft)	+E/-W (ft)	Between Centres (ft)	Between Ellipses (ft)	Minimum Separation (ft)	Separation Factor	Warning
10,200.0	7,100.0	10,147.2	7,083.0	90.2	89.5	89.08	-383.0	3,031.6	1,124.1	944.9	179.27	6.271	
10,300.0	7,100.0	10,247.2	7,083.0	92.9	92.2	89.08	-384.6	3,131.6	1,124.2	939.4	184.79	6.084	
10,400.0	7,100.0	10,347.2	7,083.0	95.7	95.0	89.08	-386.1	3,231.6	1,124.2	933.9	190.31	5.907	
10,500.0	7,100.0	10,447.2	7,083.0	98.4	97.8	89.08	-387.7	3,331.5	1,124.2	928.4	195.84	5.740	
10,600.0	7,100.0	10,547.2	7,083.0	101.2	100.5	89.08	-389.3	3,431.5	1,124.2	922.9	201.38	5.583	
10,700.0	7,100.0	10,647.2	7,083.0	104.0	103.3	89.08	-390.8	3,531.5	1,124.3	917.4	206.92	5.433	
10,800.0	7,100.0	10,747.2	7,083.0	106.7	106.1	89.08	-392.4	3,631.5	1,124.3	911.8	212.46	5.292	
10,900.0	7,100.0	10,847.2	7,083.0	109.5	108.9	89.08	-393.9	3,731.5	1,124.3	906.3	218.01	5.157	
11,000.0	7,100.0	10,947.2	7,083.0	112.3	111.6	89.08	-395.5	3,831.5	1,124.4	900.8	223.56	5.029	
11,100.0	7,100.0	11,047.2	7,083.0	115.0	114.4	89.08	-397.1	3,931.5	1,124.4	895.3	229.11	4.908	
11,200.0	7,100.0	11,147.2	7,083.0	117.8	117.2	89.08	-398.6	4,031.5	1,124.4	889.8	234.67	4.792	
11,300.0	7,100.0	11,247.2	7,083.0	120.6	120.0	89.08	-400.2	4,131.4	1,124.5	884.2	240.23	4.681	
11,400.0	7,100.0	11,347.2	7,083.0	123.3	122.8	89.08	-401.8	4,231.4	1,124.5	878.7	245.79	4.575	
11,500.0	7,100.0	11,447.2	7,083.0	126.1	125.5	89.08	-403.3	4,331.4	1,124.5	873.2	251.35	4.474	
11,600.0	7,100.0	11,547.2	7,083.0	128.9	128.3	89.08	-404.9	4,431.4	1,124.5	867.6	256.92	4.377	
11,644.2	7,100.0	11,591.4	7,083.0	130.1	129.6	89.08	-405.6	4,475.6	1,124.6	865.2	259.38	4.336	
11,683.6	7,100.0	11,627.3	7,083.0	131.2	130.6	89.08	-406.1	4,511.5	1,124.6	863.1	261.48	4.301 SF	

Company:	Synergy Resources	Local Co-ordinate Reference:	Well SRC Union A-5CHZ
Project:	SEC.5-T2N-R68W	TVD Reference:	WELL @ 4976.5ft (Ensign 131 RKB - 13.5')
Reference Site:	SRC Union Pad Sec.5-T2N-R68W	MD Reference:	WELL @ 4976.5ft (Ensign 131 RKB - 13.5')
Site Error:	0.0ft	North Reference:	True
Reference Well:	SRC Union A-5CHZ	Survey Calculation Method:	Minimum Curvature
Well Error:	0.0ft	Output errors are at	2.00 sigma
Reference Wellbore	Wellbore #1	Database:	Landmark
Reference Design:	Plan #3 (1-2-14)	Offset TVD Reference:	Offset Datum

Offset Design													Offset Site Error:	0.0 ft
Survey Program: 0-MWD													Offset Well Error:	0.0 ft
Reference		Offset		Semi Major Axis			Distance							Warning
Measured Depth (ft)	Vertical Depth (ft)	Measured Depth (ft)	Vertical Depth (ft)	Reference (ft)	Offset (ft)	Highside Toolface (°)	Offset Wellbore Centre +N/-S (ft)	+E/-W (ft)	Between Centres (ft)	Between Ellipses (ft)	Minimum Separation (ft)	Separation Factor		
0.0	0.0	0.0	0.0	0.0	0.0	69.71	6.9	18.7	20.0	20.0	0.00	N/A		
100.0	100.0	100.0	100.0	0.1	0.1	69.71	6.9	18.7	20.0	19.7	0.22	88.815		
200.0	200.0	200.0	200.0	0.3	0.3	69.71	6.9	18.7	20.0	19.3	0.67	29.605		
300.0	300.0	300.0	300.0	0.6	0.6	69.71	6.9	18.7	20.0	18.8	1.12	17.763		
400.0	400.0	400.0	400.0	0.8	0.8	69.71	6.9	18.7	20.0	18.4	1.57	12.688		
500.0	500.0	500.0	500.0	1.0	1.0	69.71	6.9	18.7	20.0	17.9	2.02	9.868		
600.0	600.0	600.0	600.0	1.2	1.2	69.71	6.9	18.7	20.0	17.5	2.47	8.074		
641.5	641.5	641.5	641.5	1.3	1.3	90.00	6.9	18.7	20.0	17.3	2.66	7.508 CC		
700.0	700.0	700.0	700.0	1.5	1.5	92.07	6.9	18.7	20.0	17.1	2.92	6.839		
800.0	800.0	800.0	800.0	1.7	1.7	99.49	6.9	18.7	20.2	16.9	3.37	6.008		
900.0	899.9	899.9	899.9	1.9	1.9	111.07	6.9	18.7	21.4	17.6	3.82	5.604		
1,000.0	999.7	999.7	999.7	2.1	2.1	124.60	6.9	18.7	24.3	20.0	4.27	5.685		
1,100.0	1,099.4	1,099.8	1,099.8	2.4	2.4	136.33	7.7	18.3	28.7	24.0	4.72	6.088		
1,200.0	1,198.9	1,200.0	1,200.0	2.6	2.6	145.10	10.0	17.0	33.9	28.7	5.17	6.562		
1,300.0	1,298.3	1,300.4	1,300.2	2.9	2.8	151.86	13.8	14.8	39.5	33.9	5.61	7.041		
1,400.0	1,397.4	1,400.8	1,400.5	3.2	3.0	157.24	19.1	11.8	45.4	39.4	6.06	7.500		
1,500.0	1,496.3	1,501.4	1,500.8	3.5	3.3	161.68	26.0	7.8	51.6	45.1	6.51	7.930		
1,600.0	1,594.9	1,602.1	1,601.0	3.8	3.5	165.45	34.4	3.0	57.9	51.0	6.96	8.328		
1,700.0	1,693.3	1,702.9	1,701.2	4.1	3.8	168.68	44.3	-2.7	64.0	56.6	7.42	8.630		
1,800.0	1,791.7	1,803.9	1,801.3	4.5	4.0	171.39	55.8	-9.2	68.6	60.7	7.89	8.695		
1,900.0	1,890.1	1,904.5	1,900.7	4.9	4.3	173.81	68.6	-16.5	71.8	63.4	8.37	8.579		
2,000.0	1,988.5	2,004.4	1,999.5	5.2	4.6	176.03	81.4	-23.9	74.9	66.0	8.85	8.461		
2,100.0	2,086.9	2,104.3	2,098.3	5.6	4.9	178.07	94.3	-31.3	78.1	68.8	9.34	8.360		
2,200.0	2,185.2	2,204.2	2,197.1	6.0	5.2	179.95	107.2	-38.6	81.4	71.5	9.84	8.272		
2,300.0	2,283.6	2,304.1	2,296.0	6.3	5.6	-178.32	120.1	-46.0	84.7	74.4	10.34	8.196		
2,400.0	2,382.0	2,404.0	2,394.8	6.7	5.9	-176.73	133.0	-53.4	88.2	77.3	10.85	8.128		
2,500.0	2,480.4	2,503.9	2,493.6	7.1	6.2	-175.25	145.8	-60.7	91.7	80.3	11.37	8.067		
2,600.0	2,578.8	2,603.8	2,592.4	7.5	6.5	-173.88	158.7	-68.1	95.2	83.3	11.89	8.011		
2,700.0	2,677.1	2,703.7	2,691.2	7.9	6.9	-172.62	171.6	-75.5	98.8	86.4	12.42	7.960		
2,800.0	2,775.5	2,803.7	2,790.0	8.3	7.2	-171.44	184.5	-82.8	102.5	89.5	12.95	7.913		
2,900.0	2,873.9	2,903.6	2,888.8	8.7	7.5	-170.34	197.4	-90.2	106.2	92.7	13.49	7.870		
3,000.0	2,972.3	3,003.5	2,987.6	9.1	7.9	-169.32	210.2	-97.6	109.9	95.9	14.04	7.829		
3,100.0	3,070.7	3,103.4	3,086.4	9.4	8.2	-168.36	223.1	-104.9	113.7	99.1	14.59	7.790		
3,200.0	3,169.1	3,203.3	3,185.2	9.8	8.5	-167.47	236.0	-112.3	117.5	102.3	15.15	7.754		
3,300.0	3,267.4	3,303.2	3,284.0	10.2	8.9	-166.63	248.9	-119.7	121.3	105.6	15.71	7.720		
3,400.0	3,365.8	3,403.1	3,382.8	10.6	9.2	-165.85	261.7	-127.0	125.1	108.8	16.28	7.688		
3,500.0	3,464.2	3,503.0	3,481.6	11.0	9.6	-165.11	274.6	-134.4	129.0	112.1	16.84	7.657		
3,600.0	3,562.6	3,603.0	3,580.4	11.4	9.9	-164.41	287.5	-141.8	132.9	115.4	17.42	7.628		
3,700.0	3,661.0	3,702.9	3,679.2	11.8	10.3	-163.75	300.4	-149.1	136.8	118.8	17.99	7.601		
3,800.0	3,759.3	3,802.8	3,778.0	12.2	10.6	-163.13	313.3	-156.5	140.7	122.1	18.57	7.574		
3,900.0	3,857.7	3,902.7	3,876.8	12.6	10.9	-162.55	326.1	-163.8	144.6	125.5	19.16	7.549		
4,000.0	3,956.1	4,002.6	3,975.6	13.0	11.3	-161.99	339.0	-171.2	148.6	128.8	19.74	7.525		
4,100.0	4,054.5	4,102.5	4,074.4	13.4	11.6	-161.46	351.9	-178.6	152.5	132.2	20.33	7.503		
4,200.0	4,152.9	4,202.4	4,173.2	13.8	12.0	-160.96	364.8	-185.9	156.5	135.6	20.92	7.481		
4,300.0	4,251.3	4,302.3	4,272.0	14.2	12.3	-160.49	377.6	-193.3	160.5	139.0	21.51	7.460		
4,400.0	4,349.6	4,402.3	4,370.8	14.6	12.7	-160.04	390.5	-200.7	164.5	142.4	22.11	7.440		
4,500.0	4,448.0	4,502.2	4,469.6	15.0	13.0	-159.61	403.4	-208.0	168.5	145.8	22.70	7.421		
4,600.0	4,546.4	4,602.1	4,568.5	15.4	13.4	-159.20	416.3	-215.4	172.5	149.2	23.30	7.402		
4,700.0	4,644.8	4,702.0	4,667.3	15.8	13.7	-158.80	429.2	-222.8	176.5	152.6	23.90	7.385		
4,800.0	4,743.2	4,801.9	4,766.1	16.2	14.1	-158.43	442.0	-230.1	180.6	156.1	24.51	7.368		
4,900.0	4,841.5	4,901.8	4,864.9	16.6	14.4	-158.07	454.9	-237.5	184.6	159.5	25.11	7.352		
5,000.0	4,939.9	5,001.7	4,963.7	17.0	14.8	-157.73	467.8	-244.9	188.6	162.9	25.71	7.336		

CC - Min centre to center distance or convergent point, SF - min separation factor, ES - min ellipse separation

SRC Union Pad Sec.5-T2N-R68W - SRC Union A-5NHZ - Wellbore #1 - Plan #3 (1-2-14)													Offset Site Error:	0.0 ft
Survey Program: 0-MWD													Offset Well Error:	0.0 ft
Reference		Offset		Semi Major Axis			Distance							
Measured Depth (ft)	Vertical Depth (ft)	Measured Depth (ft)	Vertical Depth (ft)	Reference (ft)	Offset (ft)	Highside Toolface (°)	Offset Wellbore Centre +N/-S (ft)	+E/-W (ft)	Between Centres (ft)	Between Ellipses (ft)	Minimum Separation (ft)	Separation Factor	Warning	
5,100.0	5,038.3	5,101.6	5,062.5	17.4	15.1	-157.40	480.7	-252.2	192.7	166.4	26.32	7.321		
5,200.0	5,136.7	5,201.5	5,161.3	17.8	15.5	-157.09	493.5	-259.6	196.7	169.8	26.93	7.307		
5,300.0	5,235.1	5,301.5	5,260.1	18.2	15.8	-156.78	506.4	-267.0	200.8	173.3	27.53	7.293		
5,400.0	5,333.5	5,401.4	5,358.9	18.6	16.2	-156.49	519.3	-274.3	204.9	176.7	28.14	7.280		
5,500.0	5,431.8	5,496.4	5,453.1	19.0	16.5	-156.39	530.6	-280.8	209.9	181.2	28.68	7.319		
5,600.0	5,530.3	5,590.3	5,546.4	19.3	16.7	-156.74	539.2	-285.7	217.4	188.3	29.10	7.469		
5,700.0	5,629.2	5,683.9	5,639.8	19.6	16.9	-157.24	545.0	-289.0	224.8	195.4	29.42	7.642		
5,800.0	5,728.6	5,777.4	5,733.1	19.8	17.0	-157.80	548.2	-290.9	231.9	202.2	29.68	7.812		
5,900.0	5,828.3	5,872.5	5,828.3	20.1	17.2	-158.42	548.9	-291.3	238.3	208.4	29.89	7.973		
6,000.0	5,928.2	5,972.4	5,928.2	20.2	17.3	-158.82	548.9	-291.3	242.3	212.2	30.13	8.041		
6,100.0	6,028.2	6,072.4	6,028.2	20.3	17.5	-178.76	548.9	-291.3	243.1	206.9	36.26	6.705		
6,200.0	6,128.2	6,172.4	6,128.2	20.5	17.7	-178.76	548.9	-291.3	243.1	206.6	36.58	6.647		
6,300.0	6,228.2	6,272.4	6,228.2	20.6	17.8	-178.76	548.9	-291.3	243.1	206.2	36.90	6.589		
6,400.0	6,328.2	6,372.4	6,328.2	20.8	18.0	-178.76	548.9	-291.3	243.1	205.9	37.22	6.532		
6,499.0	6,427.1	6,471.6	6,427.3	20.9	18.2	90.48	548.9	-288.7	243.1	211.2	31.95	7.610		
6,500.0	6,428.1	6,472.5	6,428.1	20.9	18.2	90.07	548.9	-288.6	243.1	211.2	31.90	7.623		
6,600.0	6,527.2	6,572.3	6,526.7	21.0	18.2	89.51	548.6	-273.2	243.1	211.1	32.02	7.593		
6,700.0	6,623.4	6,671.8	6,621.8	21.0	18.3	88.96	548.2	-244.3	243.2	211.1	32.06	7.585		
6,800.0	6,715.0	6,771.0	6,711.8	21.0	18.2	88.43	547.5	-202.7	243.3	211.2	32.08	7.582		
6,900.0	6,800.2	6,869.9	6,794.9	21.0	18.2	87.93	546.7	-149.3	243.3	211.1	32.20	7.558		
7,000.0	6,877.2	6,968.5	6,869.7	20.9	18.1	87.48	545.7	-85.1	243.4	210.9	32.54	7.481		
7,100.0	6,944.7	7,066.9	6,934.8	20.9	18.1	87.07	544.5	-11.4	243.5	210.3	33.27	7.321		
7,200.0	7,001.2	7,165.1	6,989.1	20.9	18.0	86.72	543.2	70.3	243.7	209.1	34.52	7.059		
7,300.0	7,045.7	7,263.1	7,031.6	21.0	18.2	86.43	541.9	158.5	243.8	207.4	36.38	6.700		
7,400.0	7,077.3	7,360.9	7,061.7	21.3	19.5	86.22	540.4	251.5	243.9	205.0	38.86	6.275		
7,500.0	7,095.5	7,458.7	7,078.8	22.3	21.1	86.07	538.9	347.6	243.9	202.0	41.89	5.823		
7,600.0	7,100.0	7,556.9	7,083.0	23.9	22.9	86.00	537.4	445.6	244.0	198.6	45.35	5.380		
7,700.0	7,100.0	7,656.9	7,083.0	25.7	24.9	86.01	535.8	545.6	244.0	194.8	49.25	4.954		
7,800.0	7,100.0	7,756.9	7,083.0	27.8	27.0	86.01	534.2	645.6	244.1	190.6	53.44	4.567		
7,900.0	7,100.0	7,856.9	7,083.0	30.0	29.2	86.01	532.6	745.6	244.1	186.2	57.87	4.218		
8,000.0	7,100.0	7,956.9	7,083.0	32.2	31.5	86.01	531.1	845.6	244.1	181.6	62.49	3.906		
8,100.0	7,100.0	8,056.9	7,083.0	34.6	33.9	86.01	529.5	945.6	244.2	176.9	67.26	3.630		
8,200.0	7,100.0	8,156.9	7,083.0	37.0	36.4	86.01	527.9	1,045.6	244.2	172.0	72.15	3.384		
8,300.0	7,100.0	8,256.9	7,083.0	39.5	38.9	86.01	526.4	1,145.6	244.2	167.1	77.14	3.166		
8,400.0	7,100.0	8,356.9	7,083.0	42.0	41.4	86.01	524.8	1,245.5	244.3	162.1	82.21	2.971		
8,500.0	7,100.0	8,456.9	7,083.0	44.5	44.0	86.01	523.2	1,345.5	244.3	157.0	87.34	2.797		
8,600.0	7,100.0	8,556.9	7,083.0	47.1	46.6	86.01	521.7	1,445.5	244.3	151.8	92.52	2.641		
8,700.0	7,100.0	8,656.9	7,083.0	49.7	49.2	86.01	520.1	1,545.5	244.4	146.6	97.76	2.500		
8,800.0	7,100.0	8,756.9	7,083.0	52.3	51.8	86.01	518.5	1,645.5	244.4	141.4	103.03	2.372		
8,900.0	7,100.0	8,856.9	7,083.0	55.0	54.5	86.01	517.0	1,745.5	244.5	136.1	108.33	2.256		
9,000.0	7,100.0	8,956.9	7,083.0	57.6	57.1	86.01	515.4	1,845.5	244.5	130.8	113.67	2.151		
9,100.0	7,100.0	9,056.9	7,083.0	60.3	59.8	86.01	513.8	1,945.5	244.5	125.5	119.03	2.054		
9,200.0	7,100.0	9,156.9	7,083.0	63.0	62.5	86.01	512.2	2,045.4	244.6	120.2	124.41	1.966		
9,300.0	7,100.0	9,256.9	7,083.0	65.6	65.2	86.01	510.7	2,145.4	244.6	114.8	129.80	1.884		
9,400.0	7,100.0	9,356.9	7,083.0	68.3	67.9	86.02	509.1	2,245.4	244.6	109.4	135.22	1.809		
9,500.0	7,100.0	9,456.9	7,083.0	71.1	70.6	86.02	507.5	2,345.4	244.7	104.0	140.65	1.740		
9,600.0	7,100.0	9,556.9	7,083.0	73.8	73.4	86.02	506.0	2,445.4	244.7	98.6	146.09	1.675		
9,700.0	7,100.0	9,656.9	7,083.0	76.5	76.1	86.02	504.4	2,545.4	244.7	93.2	151.55	1.615		
9,800.0	7,100.0	9,756.9	7,083.0	79.2	78.8	86.02	502.8	2,645.4	244.8	87.8	157.01	1.559		
9,900.0	7,100.0	9,856.9	7,083.0	81.9	81.6	86.02	501.3	2,745.4	244.8	82.3	162.49	1.507		
10,000.0	7,100.0	9,956.9	7,083.0	84.7	84.3	86.02	499.7	2,845.3	244.8	76.9	167.97	1.458 Level 3		
10,100.0	7,100.0	10,056.9	7,083.0	87.4	87.1	86.02	498.1	2,945.3	244.9	71.4	173.46	1.412 Level 3		

Company:	Synergy Resources	Local Co-ordinate Reference:	Well SRC Union A-5CHZ
Project:	SEC.5-T2N-R68W	TVD Reference:	WELL @ 4976.5ft (Ensign 131 RKB - 13.5')
Reference Site:	SRC Union Pad Sec.5-T2N-R68W	MD Reference:	WELL @ 4976.5ft (Ensign 131 RKB - 13.5')
Site Error:	0.0ft	North Reference:	True
Reference Well:	SRC Union A-5CHZ	Survey Calculation Method:	Minimum Curvature
Well Error:	0.0ft	Output errors are at	2.00 sigma
Reference Wellbore	Wellbore #1	Database:	Landmark
Reference Design:	Plan #3 (1-2-14)	Offset TVD Reference:	Offset Datum

Offset Design SRC Union Pad Sec.5-T2N-R68W - SRC Union A-5NHZ - Wellbore #1 - Plan #3 (1-2-14)												Offset Site Error:	0.0 ft
Survey Program: 0-MWD												Offset Well Error:	0.0 ft
Reference		Offset		Semi Major Axis			Distance						
Measured Depth (ft)	Vertical Depth (ft)	Measured Depth (ft)	Vertical Depth (ft)	Reference (ft)	Offset (ft)	Highside Toolface (°)	Offset Wellbore Centre +N/-S (ft)	+E/-W (ft)	Between Centres (ft)	Between Ellipses (ft)	Minimum Separation (ft)	Separation Factor	Warning
10,200.0	7,100.0	10,156.9	7,083.0	90.2	89.8	86.02	496.5	3,045.3	244.9	66.0	178.96	1.369	Level 3
10,300.0	7,100.0	10,256.9	7,083.0	92.9	92.6	86.02	495.0	3,145.3	245.0	60.5	184.46	1.328	Level 3
10,400.0	7,100.0	10,356.8	7,083.0	95.7	95.3	86.02	493.4	3,245.3	245.0	55.0	189.97	1.290	Level 3
10,500.0	7,100.0	10,456.8	7,083.0	98.4	98.1	86.02	491.8	3,345.3	245.0	49.5	195.49	1.253	Level 3
10,600.0	7,100.0	10,556.8	7,083.0	101.2	100.9	86.02	490.3	3,445.3	245.1	44.1	201.01	1.219	Level 2
10,700.0	7,100.0	10,656.8	7,083.0	104.0	103.6	86.02	488.7	3,545.3	245.1	38.6	206.53	1.187	Level 2
10,800.0	7,100.0	10,756.8	7,083.0	106.7	106.4	86.02	487.1	3,645.2	245.1	33.1	212.06	1.156	Level 2
10,900.0	7,100.0	10,856.8	7,083.0	109.5	109.2	86.02	485.6	3,745.2	245.2	27.6	217.59	1.127	Level 2
11,000.0	7,100.0	10,956.8	7,083.0	112.3	111.9	86.02	484.0	3,845.2	245.2	22.1	223.13	1.099	Level 2
11,100.0	7,100.0	11,056.8	7,083.0	115.0	114.7	86.03	482.4	3,945.2	245.2	16.6	228.67	1.072	Level 2
11,200.0	7,100.0	11,156.8	7,083.0	117.8	117.5	86.03	480.9	4,045.2	245.3	11.1	234.21	1.047	Level 2
11,300.0	7,100.0	11,256.8	7,083.0	120.6	120.3	86.03	479.3	4,145.2	245.3	5.6	239.76	1.023	Level 2
11,400.0	7,100.0	11,356.8	7,083.0	123.3	123.1	86.03	477.7	4,245.2	245.3	0.0	245.30	1.000	Level 2
11,500.0	7,100.0	11,456.8	7,083.0	126.1	125.8	86.03	476.1	4,345.2	245.4	-5.5	250.85	0.978	Level 1
11,600.0	7,100.0	11,556.8	7,083.0	128.9	128.6	86.03	474.6	4,445.1	245.4	-11.0	256.41	0.957	Level 1
11,642.7	7,100.0	11,599.5	7,083.0	130.1	129.8	86.03	473.9	4,487.8	245.4	-13.3	258.78	0.948	Level 1
11,683.6	7,100.0	11,639.8	7,083.0	131.2	130.9	86.03	473.3	4,528.1	245.4	-15.6	261.03	0.940	Level 1, ES, SF

Company:	Synergy Resources	Local Co-ordinate Reference:	Well SRC Union A-5CHZ
Project:	SEC.5-T2N-R68W	TVD Reference:	WELL @ 4976.5ft (Ensign 131 RKB - 13.5')
Reference Site:	SRC Union Pad Sec.5-T2N-R68W	MD Reference:	WELL @ 4976.5ft (Ensign 131 RKB - 13.5')
Site Error:	0.0ft	North Reference:	True
Reference Well:	SRC Union A-5CHZ	Survey Calculation Method:	Minimum Curvature
Well Error:	0.0ft	Output errors are at	2.00 sigma
Reference Wellbore	Wellbore #1	Database:	Landmark
Reference Design:	Plan #3 (1-2-14)	Offset TVD Reference:	Offset Datum

Offset Design												Offset Site Error:	0.0 ft
Survey Program: 0-MWD												Offset Well Error:	0.0 ft
Reference		Offset		Semi Major Axis			Distance						
Measured Depth (ft)	Vertical Depth (ft)	Measured Depth (ft)	Vertical Depth (ft)	Reference (ft)	Offset (ft)	Highside Toolface (°)	Offset Wellbore Centre +N/-S (ft)	+E/-W (ft)	Between Centres (ft)	Between Ellipses (ft)	Minimum Separation (ft)	Separation Factor	Warning
0.0	0.0	2.0	2.0	0.0	0.0	69.01	43.0	112.1	120.0	120.0	0.00	N/A	
100.0	100.0	102.0	102.0	0.1	0.1	69.01	43.0	112.1	120.0	119.8	0.23	523.542	
200.0	200.0	202.0	202.0	0.3	0.3	69.01	43.0	112.1	120.0	119.3	0.68	176.825	
300.0	300.0	302.0	302.0	0.6	0.6	69.01	43.0	112.1	120.0	118.9	1.13	106.377	
400.0	400.0	402.0	402.0	0.8	0.8	69.01	43.0	112.1	120.0	118.5	1.58	76.070	
500.0	500.0	502.0	502.0	1.0	1.0	69.01	43.0	112.1	120.0	118.0	2.03	59.203	
600.0	600.0	602.0	602.0	1.2	1.2	69.01	43.0	112.1	120.0	117.6	2.48	48.459	
700.0	700.0	702.0	702.0	1.5	1.5	89.29	43.0	112.1	120.0	117.1	2.93	41.026	
764.8	764.8	766.8	766.8	1.6	1.6	90.00	43.0	112.1	120.0	116.8	3.22	37.321 CC	
800.0	800.0	802.0	802.0	1.7	1.7	90.53	43.0	112.1	120.0	116.6	3.37	35.577	
900.0	899.9	901.9	901.9	1.9	1.9	92.61	43.0	112.1	120.1	116.3	3.82	31.419	
1,000.0	999.7	1,001.7	1,001.7	2.1	2.1	95.50	43.0	112.1	120.6	116.3	4.28	28.180 ES	
1,100.0	1,099.4	1,101.4	1,101.4	2.4	2.4	99.16	43.0	112.1	121.6	116.8	4.74	25.647	
1,200.0	1,198.9	1,200.9	1,200.9	2.6	2.6	103.52	43.0	112.1	123.5	118.3	5.21	23.696	
1,300.0	1,298.3	1,300.3	1,300.3	2.9	2.8	108.45	43.0	112.1	126.6	120.9	5.69	22.253	
1,400.0	1,397.4	1,399.4	1,399.4	3.2	3.0	113.78	43.0	112.1	131.3	125.2	6.18	21.269	
1,500.0	1,496.3	1,498.3	1,498.3	3.5	3.3	119.30	43.0	112.1	138.0	131.4	6.67	20.706	
1,600.0	1,594.9	1,596.9	1,596.9	3.8	3.5	124.79	43.0	112.1	146.9	139.7	7.16	20.524	
1,700.0	1,693.3	1,695.3	1,695.3	4.1	3.7	130.04	43.0	112.1	157.8	150.2	7.65	20.644	
1,800.0	1,791.7	1,793.7	1,793.7	4.5	3.9	134.63	43.0	112.1	170.0	161.9	8.13	20.915	
1,900.0	1,890.1	1,895.1	1,895.1	4.9	4.1	138.68	43.4	111.4	182.4	173.8	8.60	21.195	
2,000.0	1,988.5	1,997.2	1,997.1	5.2	4.4	142.20	44.9	109.3	193.7	184.7	9.07	21.359	
2,100.0	2,086.9	2,099.7	2,099.5	5.6	4.6	145.33	47.5	105.6	204.0	194.4	9.54	21.389	
2,200.0	2,185.2	2,202.5	2,202.2	6.0	4.8	148.18	51.1	100.5	212.9	202.9	10.00	21.294	
2,300.0	2,283.6	2,305.6	2,305.0	6.3	5.0	150.85	55.8	93.8	220.5	210.1	10.46	21.083	
2,400.0	2,382.0	2,409.0	2,407.8	6.7	5.3	153.40	61.5	85.6	226.8	215.9	10.92	20.768	
2,500.0	2,480.4	2,512.4	2,510.6	7.1	5.5	155.90	68.4	75.8	231.7	220.3	11.38	20.359	
2,600.0	2,578.8	2,615.8	2,613.0	7.5	5.8	158.38	76.2	64.6	235.3	223.4	11.84	19.867	
2,700.0	2,677.1	2,715.3	2,711.5	7.9	6.1	160.75	84.3	53.1	238.5	226.2	12.30	19.390	
2,800.0	2,775.5	2,814.7	2,810.0	8.3	6.4	163.05	92.3	41.6	242.0	229.3	12.76	18.971	
2,900.0	2,873.9	2,914.2	2,908.5	8.7	6.6	165.29	100.4	30.1	246.0	232.8	13.22	18.602	
3,000.0	2,972.3	3,013.6	3,006.9	9.1	6.9	167.44	108.4	18.7	250.3	236.6	13.70	18.276	
3,100.0	3,070.7	3,113.1	3,105.4	9.4	7.2	169.53	116.4	7.2	255.0	240.8	14.18	17.985	
3,200.0	3,169.1	3,212.6	3,203.9	9.8	7.5	171.53	124.5	-4.3	260.0	245.4	14.67	17.724	
3,300.0	3,267.4	3,312.0	3,302.3	10.2	7.8	173.46	132.5	-15.8	265.3	250.2	15.17	17.489	
3,400.0	3,365.8	3,411.5	3,400.8	10.6	8.1	175.31	140.5	-27.3	270.9	255.3	15.68	17.276	
3,500.0	3,464.2	3,511.0	3,499.3	11.0	8.4	177.09	148.6	-38.7	276.8	260.6	16.21	17.082	
3,600.0	3,562.6	3,610.4	3,597.8	11.4	8.7	178.79	156.6	-50.2	282.9	266.2	16.74	16.904	
3,700.0	3,661.0	3,709.9	3,696.2	11.8	9.0	-179.58	164.7	-61.7	289.3	272.0	17.28	16.740	
3,800.0	3,759.3	3,809.4	3,794.7	12.2	9.4	-178.03	172.7	-73.2	295.9	278.1	17.84	16.589	
3,900.0	3,857.7	3,908.8	3,893.2	12.6	9.7	-176.54	180.7	-84.6	302.7	284.3	18.40	16.449	
4,000.0	3,956.1	4,008.3	3,991.7	13.0	10.0	-175.12	188.8	-96.1	309.7	290.7	18.98	16.320	
4,100.0	4,054.5	4,107.8	4,090.1	13.4	10.3	-173.76	196.8	-107.6	316.9	297.3	19.56	16.199	
4,200.0	4,152.9	4,207.2	4,188.6	13.8	10.6	-172.46	204.8	-119.1	324.2	304.1	20.16	16.087	
4,300.0	4,251.3	4,306.7	4,287.1	14.2	11.0	-171.22	212.9	-130.6	331.7	311.0	20.76	15.982	
4,400.0	4,349.6	4,406.2	4,385.5	14.6	11.3	-170.03	220.9	-142.0	339.4	318.0	21.37	15.885	
4,500.0	4,448.0	4,505.6	4,484.0	15.0	11.6	-168.90	229.0	-153.5	347.2	325.2	21.98	15.794	
4,600.0	4,546.4	4,605.1	4,582.5	15.4	11.9	-167.82	237.0	-165.0	355.1	332.5	22.61	15.709	
4,700.0	4,644.8	4,704.5	4,681.0	15.8	12.3	-166.78	245.0	-176.5	363.2	339.9	23.24	15.629	
4,800.0	4,743.2	4,804.0	4,779.4	16.2	12.6	-165.79	253.1	-188.0	371.3	347.5	23.87	15.555	
4,900.0	4,841.5	4,903.5	4,877.9	16.6	12.9	-164.85	261.1	-199.4	379.6	355.1	24.51	15.485	
5,000.0	4,939.9	5,002.9	4,976.4	17.0	13.3	-163.94	269.2	-210.9	388.0	362.8	25.16	15.420	

CC - Min centre to center distance or convergent point, SF - min separation factor, ES - min ellipse separation

SRC Union Pad Sec.5-T2N-R68W - SRC Union C-5CHZ - Wellbore #1 - Plan #3 (1-2-14)													Offset Site Error:	0.0 ft
Survey Program: 0-MWD													Offset Well Error:	0.0 ft
Reference		Offset		Semi Major Axis			Distance							Warning
Measured Depth	Vertical Depth	Measured Depth	Vertical Depth	Reference	Offset	Highside Toolface	Offset Wellbore Centre		Between Centres	Between Ellipses	Minimum Separation	Separation Factor		
(ft)	(ft)	(ft)	(ft)	(ft)	(ft)	(°)	+N/-S (ft)	+E/-W (ft)	(ft)	(ft)	(ft)			
5,100.0	5,038.3	5,102.4	5,074.9	17.4	13.6	-163.07	277.2	-222.4	396.4	370.6	25.81	15.360		
5,200.0	5,136.7	5,201.9	5,173.3	17.8	13.9	-162.24	285.2	-233.9	405.0	378.5	26.46	15.302		
5,300.0	5,235.1	5,301.3	5,271.8	18.2	14.3	-161.44	293.3	-245.3	413.6	386.5	27.12	15.249		
5,400.0	5,333.5	5,400.8	5,370.3	18.6	14.6	-160.67	301.3	-256.8	422.3	394.5	27.78	15.199		
5,500.0	5,431.8	5,500.3	5,468.7	19.0	14.9	-159.94	309.3	-268.3	431.1	402.6	28.45	15.152		
5,600.0	5,530.3	5,594.0	5,561.7	19.3	15.2	-159.37	316.5	-278.5	440.1	411.0	29.06	15.142		
5,700.0	5,629.2	5,685.7	5,652.8	19.6	15.4	-159.04	321.9	-286.2	448.1	418.5	29.54	15.170		
5,800.0	5,728.6	5,777.4	5,744.3	19.8	15.6	-158.88	325.6	-291.5	454.6	424.7	29.93	15.188		
5,900.0	5,828.3	5,869.1	5,836.0	20.1	15.8	-158.87	327.6	-294.3	459.7	429.5	30.26	15.193		
6,000.0	5,928.2	5,963.3	5,930.2	20.2	15.9	-159.00	328.0	-294.9	463.3	432.7	30.52	15.177		
6,100.0	6,028.2	6,063.3	6,030.2	20.3	16.1	-178.90	328.0	-294.9	464.1	430.1	33.99	13.653		
6,200.0	6,128.2	6,163.3	6,130.2	20.5	16.3	-178.90	328.0	-294.9	464.1	429.8	34.34	13.516		
6,300.0	6,228.2	6,263.3	6,230.2	20.6	16.5	-178.90	328.0	-294.9	464.1	429.4	34.68	13.381		
6,400.0	6,328.2	6,363.3	6,330.2	20.8	16.6	-178.90	328.0	-294.9	464.1	429.1	35.03	13.248		
6,500.0	6,428.1	6,463.4	6,430.2	20.9	16.8	90.21	328.0	-293.4	464.1	431.8	32.31	14.363		
6,528.5	6,456.5	6,491.9	6,458.6	20.9	16.8	90.20	327.9	-291.0	464.1	431.7	32.37	14.336		
6,600.0	6,527.2	6,563.6	6,529.4	21.0	16.9	90.17	327.8	-280.0	464.1	431.6	32.50	14.282		
6,700.0	6,623.4	6,663.8	6,625.8	21.0	16.9	90.13	327.3	-252.8	464.1	431.5	32.56	14.252		
6,800.0	6,715.0	6,763.9	6,717.3	21.0	16.8	90.08	326.7	-212.5	464.1	431.5	32.58	14.244		
6,900.0	6,800.2	6,864.0	6,802.3	21.0	16.8	90.04	325.9	-159.9	464.1	431.5	32.65	14.213		
7,000.0	6,877.2	6,964.0	6,879.2	20.9	16.8	89.99	324.9	-96.0	464.1	431.2	32.92	14.098		
7,100.0	6,944.7	7,063.9	6,946.3	20.9	16.9	89.95	323.8	-22.1	464.1	430.6	33.55	13.832		
7,200.0	7,001.2	7,163.8	7,002.5	20.9	17.3	89.90	322.5	60.4	464.1	429.4	34.71	13.370		
7,300.0	7,045.7	7,263.7	7,046.6	21.0	18.1	89.86	321.1	149.9	464.1	427.6	36.50	12.715		
7,400.0	7,077.3	7,363.5	7,077.9	21.3	19.2	89.82	319.7	244.6	464.2	425.2	38.95	11.917		
7,500.0	7,095.5	7,463.3	7,095.7	22.3	20.7	89.78	318.1	342.7	464.2	422.2	41.97	11.059		
7,600.0	7,100.0	7,563.1	7,100.0	23.9	22.4	89.75	316.6	442.3	464.2	418.7	45.44	10.214		
7,700.0	7,100.0	7,663.1	7,100.0	25.7	24.3	89.75	315.1	542.3	464.2	414.9	49.30	9.416		
7,800.0	7,100.0	7,763.1	7,100.0	27.8	26.4	89.75	313.5	642.3	464.2	410.7	53.46	8.684		
7,900.0	7,100.0	7,863.1	7,100.0	30.0	28.6	89.75	312.0	742.3	464.2	406.3	57.86	8.023		
8,000.0	7,100.0	7,963.1	7,100.0	32.2	30.9	89.75	310.4	842.2	464.2	401.8	62.46	7.433		
8,100.0	7,100.0	8,063.1	7,100.0	34.6	33.3	89.75	308.9	942.2	464.2	397.0	67.21	6.907		
8,200.0	7,100.0	8,163.1	7,100.0	37.0	35.7	89.75	307.3	1,042.2	464.2	392.1	72.09	6.440		
8,300.0	7,100.0	8,263.1	7,100.0	39.5	38.2	89.75	305.8	1,142.2	464.2	387.2	77.07	6.024		
8,400.0	7,100.0	8,363.1	7,100.0	42.0	40.7	89.75	304.3	1,242.2	464.3	382.1	82.13	5.653		
8,500.0	7,100.0	8,463.1	7,100.0	44.5	43.3	89.75	302.7	1,342.2	464.3	377.0	87.26	5.321		
8,600.0	7,100.0	8,563.1	7,100.0	47.1	45.9	89.75	301.2	1,442.2	464.3	371.8	92.44	5.022		
8,700.0	7,100.0	8,663.1	7,100.0	49.7	48.5	89.75	299.6	1,542.2	464.3	366.6	97.68	4.753		
8,800.0	7,100.0	8,763.1	7,100.0	52.3	51.1	89.75	298.1	1,642.2	464.3	361.3	102.95	4.510		
8,900.0	7,100.0	8,863.1	7,100.0	55.0	53.8	89.75	296.5	1,742.1	464.3	356.0	108.26	4.289		
9,000.0	7,100.0	8,963.1	7,100.0	57.6	56.5	89.75	295.0	1,842.1	464.3	350.7	113.60	4.087		
9,100.0	7,100.0	9,063.1	7,100.0	60.3	59.1	89.75	293.4	1,942.1	464.3	345.4	118.96	3.903		
9,200.0	7,100.0	9,163.1	7,100.0	63.0	61.8	89.75	291.9	2,042.1	464.3	340.0	124.35	3.734		
9,300.0	7,100.0	9,263.1	7,100.0	65.6	64.5	89.75	290.4	2,142.1	464.3	334.6	129.75	3.579		
9,400.0	7,100.0	9,363.1	7,100.0	68.3	67.2	89.75	288.8	2,242.1	464.4	329.2	135.18	3.435		
9,500.0	7,100.0	9,463.1	7,100.0	71.1	70.0	89.75	287.3	2,342.1	464.4	323.8	140.61	3.302		
9,600.0	7,100.0	9,563.1	7,100.0	73.8	72.7	89.75	285.7	2,442.1	464.4	318.3	146.06	3.179		
9,700.0	7,100.0	9,663.1	7,100.0	76.5	75.4	89.75	284.2	2,542.0	464.4	312.9	151.53	3.065		
9,800.0	7,100.0	9,763.1	7,100.0	79.2	78.1	89.75	282.6	2,642.0	464.4	307.4	157.00	2.958		
9,900.0	7,100.0	9,863.1	7,100.0	81.9	80.9	89.75	281.1	2,742.0	464.4	301.9	162.49	2.858		
10,000.0	7,100.0	9,963.1	7,100.0	84.7	83.6	89.75	279.6	2,842.0	464.4	296.4	167.98	2.765		
10,100.0	7,100.0	10,063.1	7,100.0	87.4	86.4	89.75	278.0	2,942.0	464.4	290.9	173.48	2.677		

SRC Union Pad Sec.5-T2N-R68W - SRC Union C-5CHZ - Wellbore #1 - Plan #3 (1-2-14)													Offset Site Error:	0.0 ft
Survey Program: 0-MWD													Offset Well Error:	0.0 ft
Reference		Offset		Semi Major Axis			Distance							Warning
Measured Depth	Vertical Depth	Measured Depth	Vertical Depth	Reference	Offset	Highside Toolface	Offset Wellbore Centre		Between Centres	Between Ellipses	Minimum Separation	Separation Factor		
(ft)	(ft)	(ft)	(ft)	(ft)	(ft)	(°)	+N/-S (ft)	+E/-W (ft)	(ft)	(ft)	(ft)			
10,200.0	7,100.0	10,163.1	7,100.0	90.2	89.1	89.75	276.5	3,042.0	464.4	285.4	178.99	2.595		
10,300.0	7,100.0	10,263.1	7,100.0	92.9	91.9	89.75	274.9	3,142.0	464.4	279.9	184.50	2.517		
10,400.0	7,100.0	10,363.1	7,100.0	95.7	94.7	89.75	273.4	3,242.0	464.5	274.4	190.02	2.444		
10,500.0	7,100.0	10,463.1	7,100.0	98.4	97.4	89.75	271.8	3,341.9	464.5	268.9	195.55	2.375		
10,600.0	7,100.0	10,563.1	7,100.0	101.2	100.2	89.75	270.3	3,441.9	464.5	263.4	201.08	2.310		
10,700.0	7,100.0	10,663.1	7,100.0	104.0	102.9	89.75	268.7	3,541.9	464.5	257.9	206.61	2.248		
10,800.0	7,100.0	10,763.1	7,100.0	106.7	105.7	89.75	267.2	3,641.9	464.5	252.3	212.15	2.189		
10,900.0	7,100.0	10,863.1	7,100.0	109.5	108.5	89.75	265.7	3,741.9	464.5	246.8	217.70	2.134		
11,000.0	7,100.0	10,963.1	7,100.0	112.3	111.3	89.75	264.1	3,841.9	464.5	241.3	223.24	2.081		
11,100.0	7,100.0	11,063.1	7,100.0	115.0	114.0	89.75	262.6	3,941.9	464.5	235.7	228.79	2.030		
11,200.0	7,100.0	11,163.1	7,100.0	117.8	116.8	89.75	261.0	4,041.9	464.5	230.2	234.35	1.982		
11,300.0	7,100.0	11,263.1	7,100.0	120.6	119.6	89.75	259.5	4,141.9	464.5	224.6	239.90	1.936		
11,400.0	7,100.0	11,363.1	7,100.0	123.3	122.4	89.75	257.9	4,241.8	464.6	219.1	245.46	1.893		
11,500.0	7,100.0	11,463.1	7,100.0	126.1	125.1	89.75	256.4	4,341.8	464.6	213.5	251.02	1.851		
11,600.0	7,100.0	11,563.1	7,100.0	128.9	127.9	89.75	254.9	4,441.8	464.6	208.0	256.59	1.811		
11,648.2	7,100.0	11,611.3	7,100.0	130.2	129.2	89.75	254.1	4,490.0	464.6	205.4	259.16	1.793		
11,683.6	7,100.0	11,645.2	7,100.0	131.2	129.8	89.75	253.6	4,524.0	464.6	203.8	260.75	1.782 SF		

SRC Union Pad Sec.5-T2N-R68W - SRC Union C-5NHZ - Wellbore #1 - Plan #3 (1-2-14)													Offset Site Error:	0.0 ft
Survey Program: 0-MWD													Offset Well Error:	0.0 ft
Reference		Offset		Semi Major Axis			Distance							Warning
Measured Depth (ft)	Vertical Depth (ft)	Measured Depth (ft)	Vertical Depth (ft)	Reference (ft)	Offset (ft)	Highside Toolface (°)	Offset Wellbore Centre +N/-S (ft)	+E/-W (ft)	Between Centres (ft)	Between Ellipses (ft)	Minimum Separation (ft)	Separation Factor		
0.0	0.0	2.0	2.0	0.0	0.0	68.91	57.6	149.2	160.0	159.9	0.00	N/A		
100.0	100.0	102.0	102.0	0.1	0.1	68.91	57.6	149.2	160.0	159.7	0.23	697.678		
200.0	200.0	202.0	202.0	0.3	0.3	68.91	57.6	149.2	160.0	159.3	0.68	235.640		
300.0	300.0	302.0	302.0	0.6	0.6	68.91	57.6	149.2	160.0	158.8	1.13	141.759		
400.0	400.0	402.0	402.0	0.8	0.8	68.91	57.6	149.2	160.0	158.4	1.58	101.372		
500.0	500.0	502.0	502.0	1.0	1.0	68.91	57.6	149.2	160.0	157.9	2.03	78.895		
600.0	600.0	602.0	602.0	1.2	1.2	68.91	57.6	149.2	160.0	157.5	2.48	64.576		
700.0	700.0	702.0	702.0	1.5	1.5	89.08	57.6	149.2	159.9	157.0	2.93	54.673		
798.9	798.8	800.8	800.8	1.7	1.7	90.00	57.6	149.2	159.9	156.5	3.37	47.477	CC	
800.0	800.0	802.0	802.0	1.7	1.7	90.01	57.6	149.2	159.9	156.5	3.37	47.406		
900.0	899.9	901.9	901.9	1.9	1.9	91.57	57.6	149.2	160.0	156.2	3.82	41.839		
1,000.0	999.7	1,001.7	1,001.7	2.1	2.1	93.75	57.6	149.2	160.3	156.0	4.28	37.456	ES	
1,100.0	1,099.4	1,101.4	1,101.4	2.4	2.4	96.52	57.6	149.2	161.0	156.2	4.74	33.953		
1,200.0	1,198.9	1,200.9	1,200.9	2.6	2.6	99.86	57.6	149.2	162.3	157.1	5.21	31.145		
1,300.0	1,298.3	1,300.3	1,300.3	2.9	2.8	103.69	57.6	149.2	164.7	159.0	5.69	28.916		
1,400.0	1,397.4	1,399.4	1,399.4	3.2	3.0	107.95	57.6	149.2	168.3	162.1	6.19	27.194		
1,500.0	1,496.3	1,498.3	1,498.3	3.5	3.3	112.51	57.6	149.2	173.4	166.7	6.69	25.928		
1,600.0	1,594.9	1,596.9	1,596.9	3.8	3.5	117.24	57.6	149.2	180.4	173.2	7.20	25.078		
1,700.0	1,693.3	1,695.3	1,695.3	4.1	3.7	121.96	57.6	149.2	189.4	181.7	7.70	24.580		
1,800.0	1,791.7	1,793.7	1,793.7	4.5	3.9	126.29	57.6	149.2	199.5	191.3	8.21	24.312		
1,900.0	1,890.1	1,892.1	1,892.1	4.9	4.1	130.18	57.6	149.2	210.7	202.0	8.70	24.213		
2,000.0	1,988.5	1,990.5	1,990.5	5.2	4.4	133.67	57.6	149.2	222.8	213.6	9.19	24.239		
2,100.0	2,086.9	2,088.9	2,088.9	5.6	4.6	136.80	57.6	149.2	235.7	226.0	9.68	24.354		
2,200.0	2,185.2	2,187.2	2,187.2	6.0	4.8	139.60	57.6	149.2	249.1	239.0	10.15	24.533		
2,300.0	2,283.6	2,289.3	2,289.3	6.3	5.0	142.27	57.6	148.5	262.5	251.9	10.62	24.714		
2,400.0	2,382.0	2,392.1	2,392.1	6.7	5.2	144.87	57.9	146.0	274.8	263.8	11.07	24.826		
2,500.0	2,480.4	2,495.1	2,495.0	7.1	5.4	147.44	58.4	141.7	286.1	274.6	11.51	24.850		
2,600.0	2,578.8	2,598.2	2,597.9	7.5	5.7	149.99	59.1	135.5	296.4	284.5	11.95	24.796		
2,700.0	2,677.1	2,701.4	2,700.7	7.9	5.9	152.58	60.0	127.5	305.8	293.4	12.39	24.676		
2,800.0	2,775.5	2,804.5	2,803.4	8.3	6.1	155.21	61.2	117.6	314.3	301.5	12.83	24.500		
2,900.0	2,873.9	2,907.5	2,905.7	8.7	6.4	157.90	62.5	105.9	322.1	308.8	13.27	24.274		
3,000.0	2,972.3	3,010.1	3,007.4	9.1	6.6	160.67	64.0	92.4	329.2	315.5	13.71	24.008		
3,100.0	3,070.7	3,108.6	3,104.9	9.4	6.9	163.31	65.6	78.8	336.5	322.3	14.16	23.764		
3,200.0	3,169.1	3,207.1	3,202.5	9.8	7.1	165.83	67.1	65.1	344.5	329.9	14.62	23.562		
3,300.0	3,267.4	3,305.7	3,300.1	10.2	7.4	168.24	68.7	51.4	353.1	338.0	15.09	23.395		
3,400.0	3,365.8	3,404.2	3,397.6	10.6	7.7	170.53	70.3	37.7	362.3	346.8	15.58	23.255		
3,500.0	3,464.2	3,502.7	3,495.2	11.0	8.0	172.70	71.8	24.1	372.1	356.1	16.08	23.138		
3,600.0	3,562.6	3,601.2	3,592.7	11.4	8.2	174.76	73.4	10.4	382.4	365.8	16.60	23.040		
3,700.0	3,661.0	3,699.8	3,690.3	11.8	8.5	176.72	74.9	-3.3	393.2	376.1	17.13	22.956		
3,800.0	3,759.3	3,798.3	3,787.9	12.2	8.8	178.57	76.5	-16.9	404.4	386.8	17.67	22.886		
3,900.0	3,857.7	3,896.8	3,885.4	12.6	9.1	-179.68	78.0	-30.6	416.0	397.8	18.23	22.826		
4,000.0	3,956.1	3,995.3	3,983.0	13.0	9.4	-178.03	79.6	-44.3	428.0	409.2	18.79	22.776		
4,100.0	4,054.5	4,093.9	4,080.6	13.4	9.7	-176.46	81.1	-58.0	440.4	421.0	19.37	22.734		
4,200.0	4,152.9	4,192.4	4,178.1	13.8	10.0	-174.98	82.7	-71.6	453.0	433.0	19.96	22.698		
4,300.0	4,251.3	4,290.9	4,275.7	14.2	10.3	-173.58	84.3	-85.3	465.9	445.3	20.55	22.669		
4,400.0	4,349.6	4,389.5	4,373.2	14.6	10.7	-172.26	85.8	-99.0	479.1	457.9	21.16	22.645		
4,500.0	4,448.0	4,488.0	4,470.8	15.0	11.0	-171.01	87.4	-112.6	492.5	470.7	21.77	22.626		
4,600.0	4,546.4	4,586.5	4,568.4	15.4	11.3	-169.82	88.9	-126.3	506.1	483.7	22.38	22.611		
4,700.0	4,644.8	4,685.0	4,665.9	15.8	11.6	-168.70	90.5	-140.0	520.0	497.0	23.01	22.600		
4,800.0	4,743.2	4,783.6	4,763.5	16.2	11.9	-167.63	92.0	-153.7	534.0	510.4	23.64	22.593		
4,900.0	4,841.5	4,882.1	4,861.1	16.6	12.2	-166.62	93.6	-167.3	548.2	523.9	24.27	22.588		
5,000.0	4,939.9	4,980.6	4,958.6	17.0	12.6	-165.65	95.2	-181.0	562.6	537.7	24.91	22.587		

Company:	Synergy Resources	Local Co-ordinate Reference:	Well SRC Union A-5CHZ
Project:	SEC.5-T2N-R68W	TVD Reference:	WELL @ 4976.5ft (Ensign 131 RKB - 13.5')
Reference Site:	SRC Union Pad Sec.5-T2N-R68W	MD Reference:	WELL @ 4976.5ft (Ensign 131 RKB - 13.5')
Site Error:	0.0ft	North Reference:	True
Reference Well:	SRC Union A-5CHZ	Survey Calculation Method:	Minimum Curvature
Well Error:	0.0ft	Output errors are at	2.00 sigma
Reference Wellbore	Wellbore #1	Database:	Landmark
Reference Design:	Plan #3 (1-2-14)	Offset TVD Reference:	Offset Datum

Offset Design												Offset Site Error:	0.0 ft
Survey Program: 0-MWD												Offset Well Error:	0.0 ft
Reference		Offset		Semi Major Axis			Distance						Warning
Measured Depth (ft)	Vertical Depth (ft)	Measured Depth (ft)	Vertical Depth (ft)	Reference (ft)	Offset (ft)	Highside Toolface (°)	Offset Wellbore Centre +N/-S (ft)	+E/-W (ft)	Between Centres (ft)	Between Ellipses (ft)	Minimum Separation (ft)	Separation Factor	
5,100.0	5,038.3	5,079.2	5,056.2	17.4	12.9	-164.74	96.7	-194.7	577.1	551.5	25.55	22.588	
5,200.0	5,136.7	5,177.7	5,153.8	17.8	13.2	-163.87	98.3	-208.3	591.7	565.5	26.19	22.591	
5,300.0	5,235.1	5,276.2	5,251.3	18.2	13.5	-163.04	99.8	-222.0	606.5	579.7	26.84	22.596	
5,400.0	5,333.5	5,374.7	5,348.9	18.6	13.8	-162.26	101.4	-235.7	621.4	593.9	27.49	22.604	
5,500.0	5,431.8	5,473.3	5,446.4	19.0	14.2	-161.51	102.9	-249.4	636.4	608.3	28.15	22.612	
5,600.0	5,530.3	5,571.8	5,544.0	19.3	14.5	-160.82	104.5	-263.0	651.2	622.4	28.81	22.601	
5,700.0	5,629.2	5,669.6	5,640.9	19.6	14.8	-160.16	106.0	-276.3	663.4	634.0	29.42	22.546	
5,800.0	5,728.6	5,766.4	5,737.1	19.8	15.0	-159.64	107.2	-286.8	672.7	642.8	29.92	22.486	
5,900.0	5,828.3	5,863.7	5,834.1	20.1	15.2	-159.30	108.0	-294.0	679.2	648.9	30.33	22.397	
6,000.0	5,928.2	5,961.4	5,931.7	20.2	15.4	-159.11	108.5	-298.0	682.8	652.1	30.66	22.269	
6,100.0	6,028.2	6,059.8	6,030.2	20.3	15.6	-178.93	108.6	-298.8	683.6	650.6	33.01	20.710	
6,200.0	6,128.2	6,159.8	6,130.2	20.5	15.8	-178.93	108.6	-298.8	683.6	650.2	33.35	20.494	
6,300.0	6,228.2	6,259.8	6,230.2	20.6	15.9	-178.93	108.6	-298.8	683.6	649.8	33.71	20.278	
6,400.0	6,328.2	6,359.8	6,330.2	20.8	16.1	-178.93	108.6	-298.8	683.6	649.5	34.07	20.065	
6,500.0	6,428.1	6,459.9	6,430.2	20.9	16.3	90.07	108.5	-296.0	683.6	651.2	32.39	21.101	
6,510.5	6,438.6	6,470.4	6,440.6	20.9	16.3	90.05	108.5	-295.0	683.6	651.1	32.41	21.089	
6,600.0	6,527.2	6,559.8	6,528.8	21.0	16.3	89.86	108.3	-280.3	683.6	651.0	32.54	21.006	
6,700.0	6,623.4	6,659.4	6,623.9	21.0	16.3	89.64	107.8	-251.2	683.6	651.0	32.58	20.984	
6,800.0	6,715.0	6,758.5	6,713.7	21.0	16.3	89.44	107.2	-209.4	683.6	651.0	32.57	20.990	
6,900.0	6,800.2	6,857.4	6,796.7	21.0	16.3	89.24	106.3	-155.8	683.6	651.0	32.62	20.956	
7,000.0	6,877.2	6,956.0	6,871.2	20.9	16.4	89.06	105.3	-91.5	683.7	650.8	32.89	20.790	
7,100.0	6,944.7	7,054.2	6,936.1	20.9	16.6	88.90	104.2	-17.8	683.7	650.2	33.52	20.399	
7,200.0	7,001.2	7,152.3	6,990.2	20.9	17.2	88.75	102.9	63.9	683.8	649.1	34.67	19.722	
7,300.0	7,045.7	7,250.0	7,032.5	21.0	18.0	88.64	101.5	151.9	683.9	647.4	36.45	18.764	
7,400.0	7,077.3	7,347.8	7,062.4	21.3	19.2	88.54	100.1	244.9	683.9	645.0	38.86	17.599	
7,500.0	7,095.5	7,445.4	7,079.4	22.3	20.6	88.48	98.6	340.9	683.9	642.1	41.84	16.348	
7,600.0	7,100.0	7,543.4	7,083.5	23.9	22.3	88.45	97.1	438.8	684.0	638.7	45.26	15.112	
7,700.0	7,100.0	7,643.4	7,083.5	25.7	24.2	88.45	95.5	538.8	684.0	634.9	49.10	13.931	
7,800.0	7,100.0	7,743.4	7,083.5	27.8	26.3	88.45	94.0	638.8	684.0	630.8	53.24	12.848	
7,900.0	7,100.0	7,843.4	7,083.5	30.0	28.4	88.45	92.4	738.8	684.0	626.4	57.63	11.869	
8,000.0	7,100.0	7,943.4	7,083.5	32.2	30.7	88.45	90.9	838.8	684.1	621.8	62.22	10.994	
8,100.0	7,100.0	8,043.4	7,083.5	34.6	33.1	88.45	89.3	938.8	684.1	617.1	66.97	10.215	
8,200.0	7,100.0	8,143.4	7,083.5	37.0	35.5	88.45	87.7	1,038.7	684.1	612.3	71.84	9.523	
8,300.0	7,100.0	8,243.4	7,083.5	39.5	38.0	88.45	86.2	1,138.7	684.1	607.3	76.81	8.906	
8,400.0	7,100.0	8,343.4	7,083.5	42.0	40.5	88.45	84.6	1,238.7	684.2	602.3	81.87	8.357	
8,500.0	7,100.0	8,443.4	7,083.5	44.5	43.1	88.45	83.1	1,338.7	684.2	597.2	87.00	7.865	
8,600.0	7,100.0	8,543.4	7,083.5	47.1	45.7	88.45	81.5	1,438.7	684.2	592.0	92.18	7.423	
8,700.0	7,100.0	8,643.4	7,083.5	49.7	48.3	88.45	80.0	1,538.7	684.2	586.8	97.41	7.024	
8,800.0	7,100.0	8,743.4	7,083.5	52.3	50.9	88.45	78.4	1,638.7	684.2	581.6	102.68	6.664	
8,900.0	7,100.0	8,843.4	7,083.5	55.0	53.6	88.45	76.8	1,738.7	684.3	576.3	107.98	6.337	
9,000.0	7,100.0	8,943.4	7,083.5	57.6	56.2	88.45	75.3	1,838.6	684.3	571.0	113.32	6.039	
9,100.0	7,100.0	9,043.4	7,083.5	60.3	58.9	88.45	73.7	1,938.6	684.3	565.6	118.68	5.766	
9,200.0	7,100.0	9,143.4	7,083.5	63.0	61.6	88.45	72.2	2,038.6	684.3	560.3	124.06	5.516	
9,300.0	7,100.0	9,243.4	7,083.5	65.6	64.3	88.45	70.6	2,138.6	684.4	554.9	129.47	5.286	
9,400.0	7,100.0	9,343.4	7,083.5	68.3	67.0	88.45	69.1	2,238.6	684.4	549.5	134.89	5.074	
9,500.0	7,100.0	9,443.4	7,083.5	71.1	69.7	88.45	67.5	2,338.6	684.4	544.1	140.32	4.877	
9,600.0	7,100.0	9,543.4	7,083.5	73.8	72.5	88.45	65.9	2,438.6	684.4	538.7	145.77	4.695	
9,700.0	7,100.0	9,643.4	7,083.5	76.5	75.2	88.45	64.4	2,538.6	684.5	533.2	151.23	4.526	
9,800.0	7,100.0	9,743.4	7,083.5	79.2	77.9	88.45	62.8	2,638.5	684.5	527.8	156.70	4.368	
9,900.0	7,100.0	9,843.4	7,083.5	81.9	80.7	88.45	61.3	2,738.5	684.5	522.3	162.18	4.221	
10,000.0	7,100.0	9,943.4	7,083.5	84.7	83.4	88.45	59.7	2,838.5	684.5	516.8	167.68	4.082	
10,100.0	7,100.0	10,043.4	7,083.5	87.4	86.2	88.45	58.2	2,938.5	684.5	511.4	173.17	3.953	

CC - Min centre to center distance or convergent point, SF - min separation factor, ES - min ellipse separation

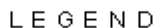
Company:	Synergy Resources	Local Co-ordinate Reference:	Well SRC Union A-5CHZ
Project:	SEC.5-T2N-R68W	TVD Reference:	WELL @ 4976.5ft (Ensign 131 RKB - 13.5')
Reference Site:	SRC Union Pad Sec.5-T2N-R68W	MD Reference:	WELL @ 4976.5ft (Ensign 131 RKB - 13.5')
Site Error:	0.0ft	North Reference:	True
Reference Well:	SRC Union A-5CHZ	Survey Calculation Method:	Minimum Curvature
Well Error:	0.0ft	Output errors are at	2.00 sigma
Reference Wellbore	Wellbore #1	Database:	Landmark
Reference Design:	Plan #3 (1-2-14)	Offset TVD Reference:	Offset Datum

Offset Design SRC Union Pad Sec.5-T2N-R68W - SRC Union C-5NHZ - Wellbore #1 - Plan #3 (1-2-14)												Offset Site Error:	0.0 ft
Survey Program: 0-MWD												Offset Well Error:	0.0 ft
Reference		Offset		Semi Major Axis			Distance						
Measured Depth (ft)	Vertical Depth (ft)	Measured Depth (ft)	Vertical Depth (ft)	Reference (ft)	Offset (ft)	Highside Toolface (°)	Offset Wellbore Centre +N/-S (ft)	+E/-W (ft)	Between Centres (ft)	Between Ellipses (ft)	Minimum Separation (ft)	Separation Factor	Warning
10,200.0	7,100.0	10,143.4	7,083.5	90.2	88.9	88.45	56.6	3,038.5	684.6	505.9	178.68	3.831	
10,300.0	7,100.0	10,243.4	7,083.5	92.9	91.7	88.45	55.0	3,138.5	684.6	500.4	184.19	3.717	
10,400.0	7,100.0	10,343.4	7,083.5	95.7	94.4	88.45	53.5	3,238.5	684.6	494.9	189.71	3.609	
10,500.0	7,100.0	10,443.4	7,083.5	98.4	97.2	88.45	51.9	3,338.5	684.6	489.4	195.23	3.507	
10,600.0	7,100.0	10,543.4	7,083.5	101.2	100.0	88.45	50.4	3,438.5	684.7	483.9	200.76	3.410	
10,700.0	7,100.0	10,643.4	7,083.5	104.0	102.7	88.45	48.8	3,538.4	684.7	478.4	206.29	3.319	
10,800.0	7,100.0	10,743.4	7,083.5	106.7	105.5	88.45	47.3	3,638.4	684.7	472.9	211.83	3.232	
10,900.0	7,100.0	10,843.4	7,083.5	109.5	108.3	88.45	45.7	3,738.4	684.7	467.4	217.37	3.150	
11,000.0	7,100.0	10,943.4	7,083.5	112.3	111.0	88.45	44.2	3,838.4	684.8	461.8	222.92	3.072	
11,100.0	7,100.0	11,043.4	7,083.5	115.0	113.8	88.45	42.6	3,938.4	684.8	456.3	228.47	2.997	
11,200.0	7,100.0	11,143.4	7,083.5	117.8	116.6	88.45	41.0	4,038.4	684.8	450.8	234.02	2.926	
11,300.0	7,100.0	11,243.4	7,083.5	120.6	119.4	88.45	39.5	4,138.4	684.8	445.2	239.57	2.859	
11,400.0	7,100.0	11,343.4	7,083.5	123.3	122.1	88.45	37.9	4,238.4	684.8	439.7	245.13	2.794	
11,500.0	7,100.0	11,443.4	7,083.5	126.1	124.9	88.45	36.4	4,338.3	684.9	434.2	250.69	2.732	
11,600.0	7,100.0	11,543.4	7,083.5	128.9	127.7	88.45	34.8	4,438.3	684.9	428.6	256.25	2.673	
11,645.9	7,100.0	11,589.4	7,083.5	130.2	129.0	88.45	34.1	4,484.3	684.9	426.1	258.81	2.646	
11,683.6	7,100.0	11,624.9	7,083.5	131.2	130.0	88.45	33.5	4,519.8	684.9	424.1	260.84	2.626 SF	

Reference Depths are relative to WELL @ 4976.5ft (Ensign 131 RKB - Coordinates are relative to: SRC Union A-5CHZ
Offset Depths are relative to Offset Datum Coordinate System is US State Plane 1983, Colorado Northern Zone
Central Meridian is -105.500000 ° Grid Convergence at Surface is: 0.30°



Reference Depths are relative to WELL @ 4976.5ft (Ensign 131 RKB - Coordinates are relative to: SRC Union A-5CHZ
Offset Depths are relative to Offset Datum Coordinate System is US State Plane 1983, Colorado Northern Zone
Central Meridian is -105.500000 ° Grid Convergence at Surface is: 0.30°



nien 12-5NHZ, Wellbore #1, Plan #3 (1-2-14) V8 SRC Union C-5CHZ, Wellbore #1, Plan #3 (1-2-14) V8 SRC Union 12-5CHZ, Wellbore #1, Plan #3 (1-2-14) V8