



VDL CCL GAMMA-RAY CEMENT BOND LOG

Pioneer Energy Services

Company BAYSWATER
Well ERICA #1
Field WATTENBERG
County WELD State COLORADO

Location: API #: NWNW
SEC 34 TWP 2N RGE 66W
Permanent Datum GL
Log Measured From KB
Drilling Measured From KB
Elevation
K.B.
D.F.
G.L.

Date 11/12/13

Run Number ONE
Depth Driller
Depth Logger 7900'
Bottom Logged Interval 7896'
Top Log Interval 6600
Open Hole Size 77/8"
Type Fluid WATER
Density / Viscosity NA
Max. Recorded Temp. 212
Estimated Cement Top 6808'
Time Well Ready NA
Time Logger on Bottom NA
Equipment Number 9605
Location FT MORGAN
Recorded By TODD YOUNG
Witnessed By SHAWN ARMSTRONG

Borehole Record
Run Number Bit From To Size Weight From To

Casing Record
Surface String Size Wgt/Ft Top Bottom
Prot. String 4.5" 11.6#
Production String
Liner

<<< Fold Here >>>

All interpretations are opinions based on inferences from electrical or other measurements and we cannot and do not guarantee the accuracy or correctness of any interpretation, and we shall not, except in the case of gross or willful negligence on our part, be liable or responsible for any loss, costs, damages, or expenses incurred or sustained by anyone resulting from any interpretation made by any of our officers, agents or employees. These interpretations are also subject to our general terms and conditions set out in our current Price Schedule.

Comments

SO # 2-204864

THANK YOU FOR USING
PIONEER ENERGY SERVICES

Sensor	Offset (ft)	Schematic	Description	Len (ft)	OD (in)	Wt (lb)
CCL	19.31		CCL-titan01 (01t)	1.92	2.75	

Tool Joint	Tool Joint Length (ft)	Tool Joint Weight (lb)	Tool Joint O.D. (in)	Tool Joint Description	Tool Joint Length (ft)	Tool Joint Weight (lb)	Tool Joint O.D. (in)	Tool Joint Description
WVF3	10.92	8.75	2.75	106.50	SDSCENT Centralizer for testing	3.00	3.25	20.00
WVF5	9.92	3.00	3.25	20.00	CBL-Probe (110215) 2.75 digital probe	8.75	2.75	106.50
GR	1.13	3.67	2.75	100.00	SDSCENT Centralizer for testing	3.00	3.25	20.00
					GR-probe 2.75 (51013)	3.67	2.75	100.00

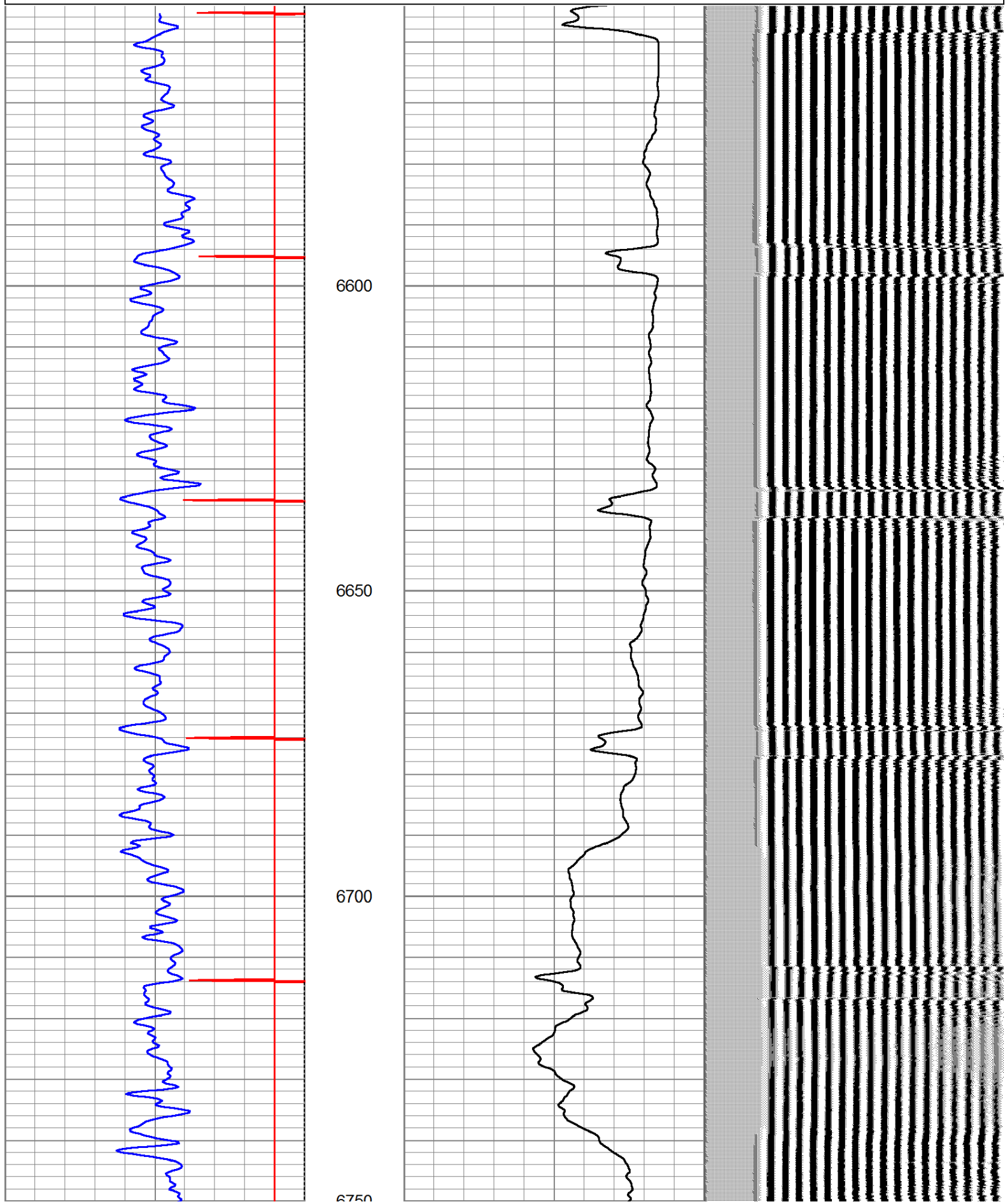
Dataset: erica #1.db: field/well/run1/pass4

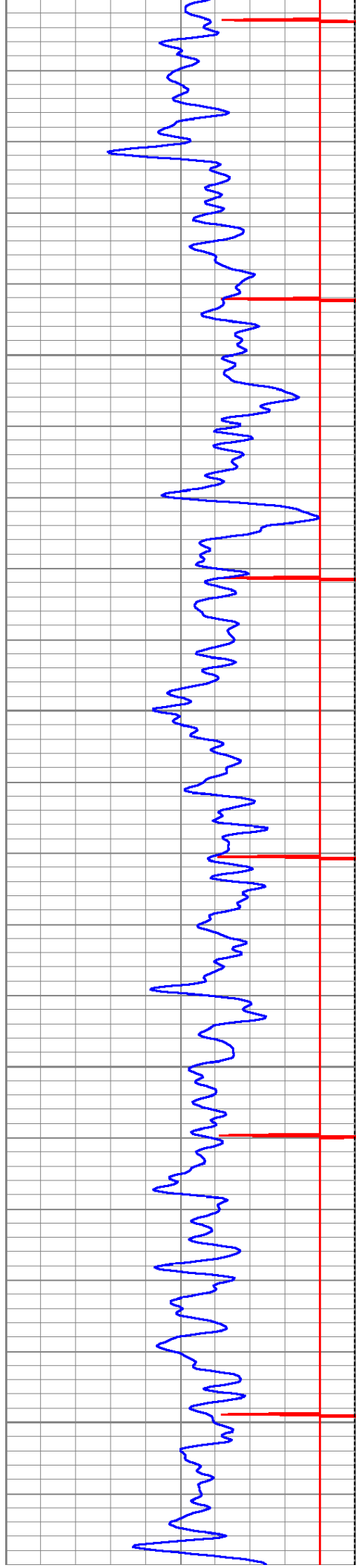
Total Length: 20.33 ft

Total Weight: 246.50 lb

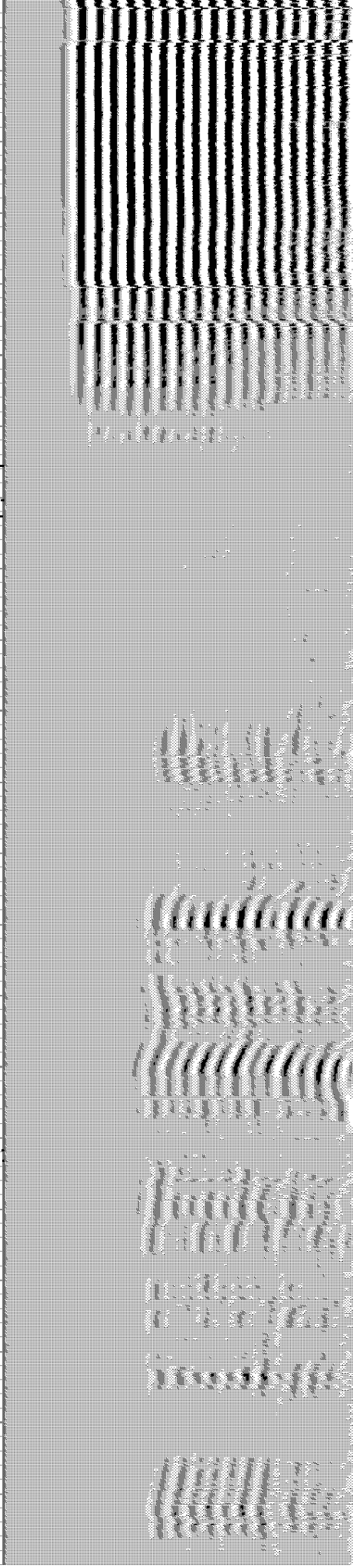
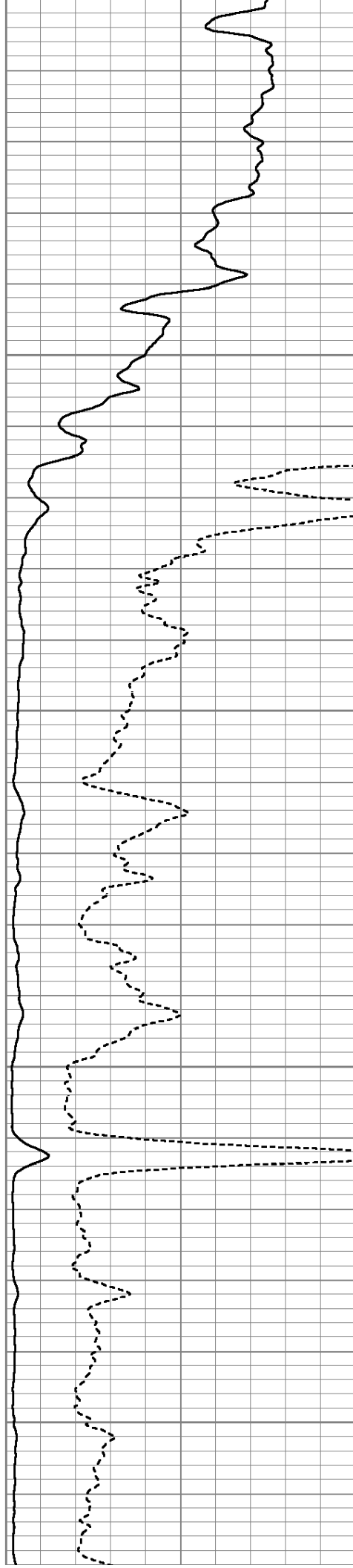
O.D.: 3.25 in

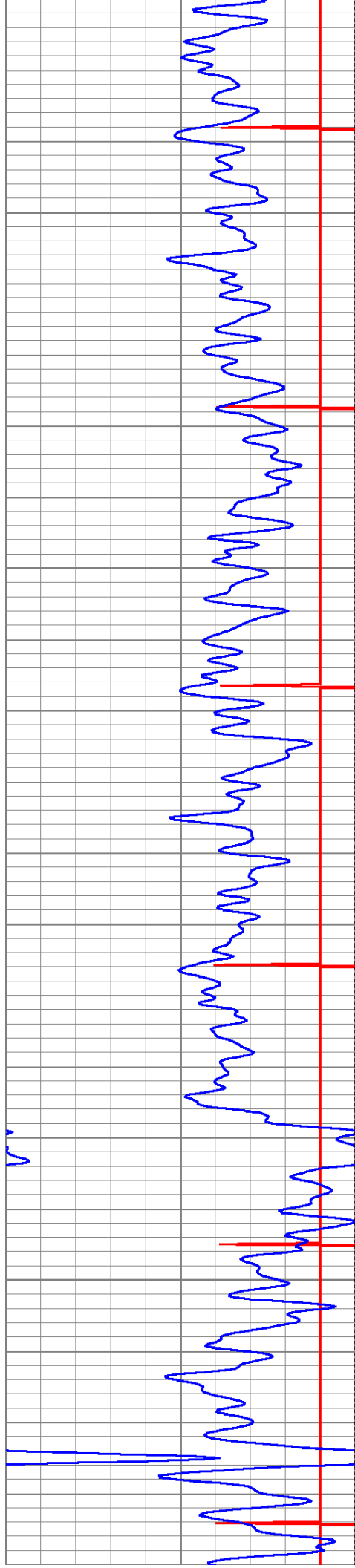
9	Collar Locator	-1	LTEN	0	Amplified Amplitude (mV)	10	200	Variable Density	1200
0	Gamma Ray (GAPI)	200	0	(lb)2000	0	Amplitude (mV)	100		





6750
6800
6850
6900
6950



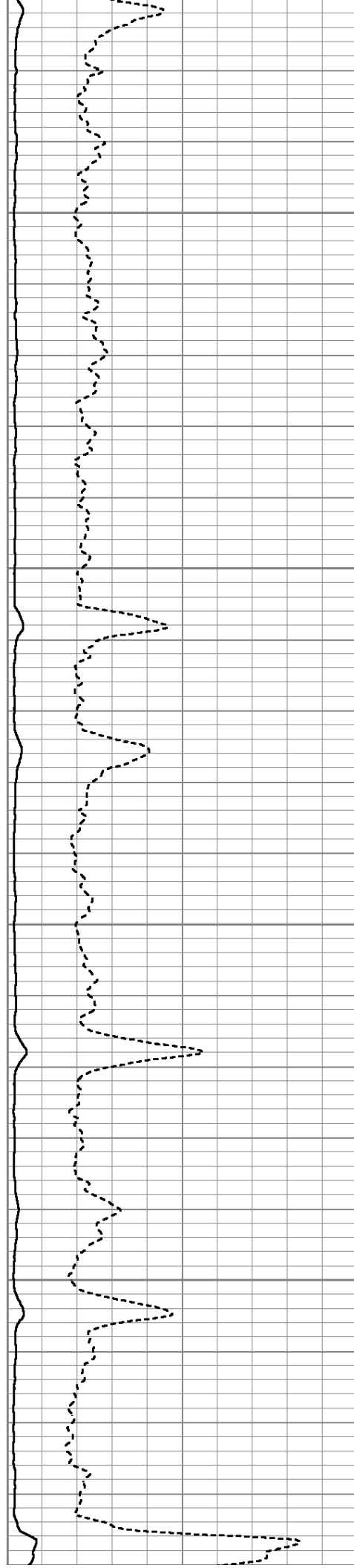


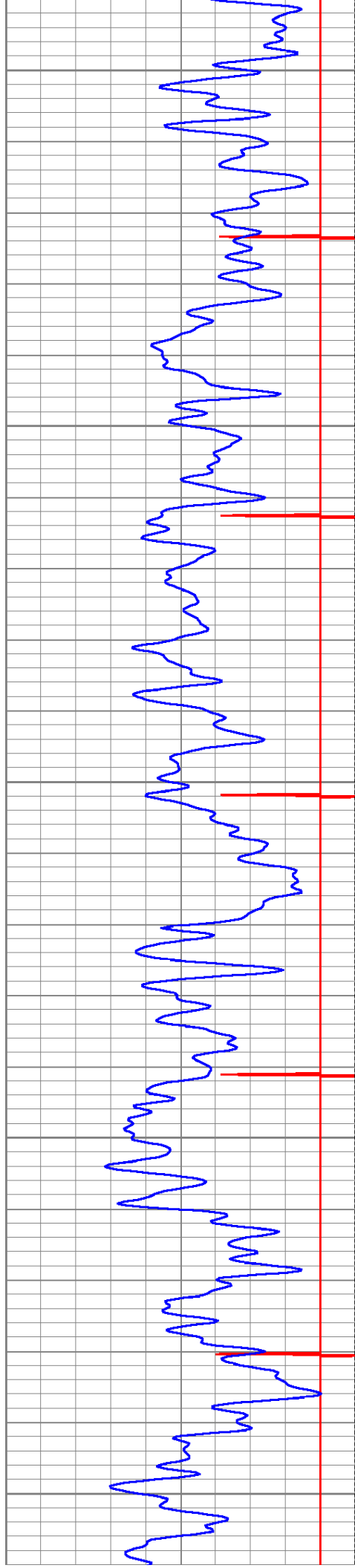
7000

7050

7100

7150





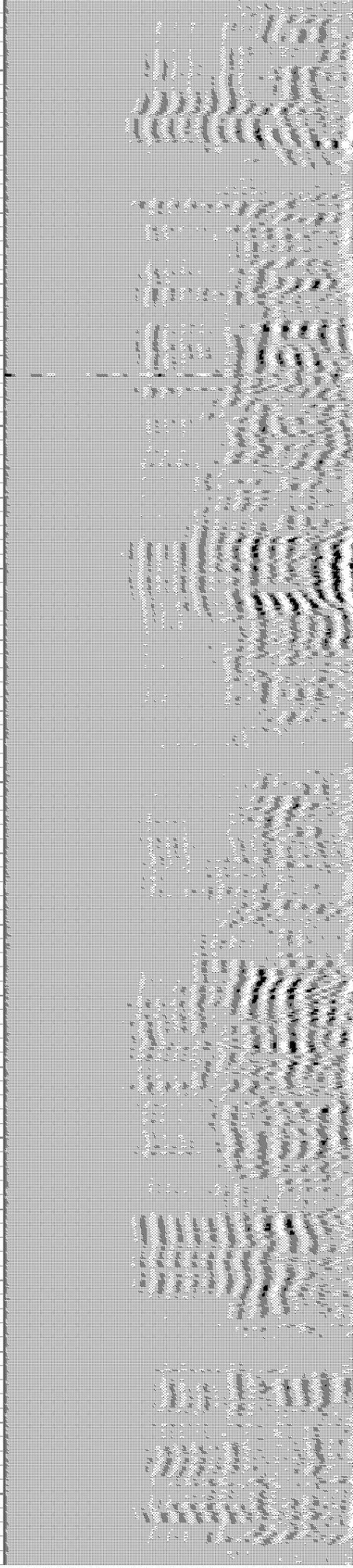
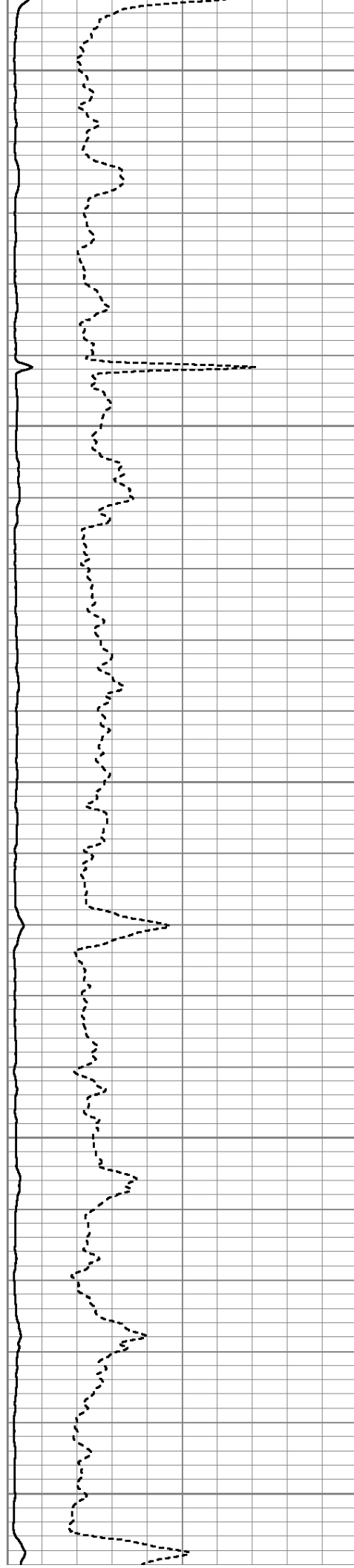
7200

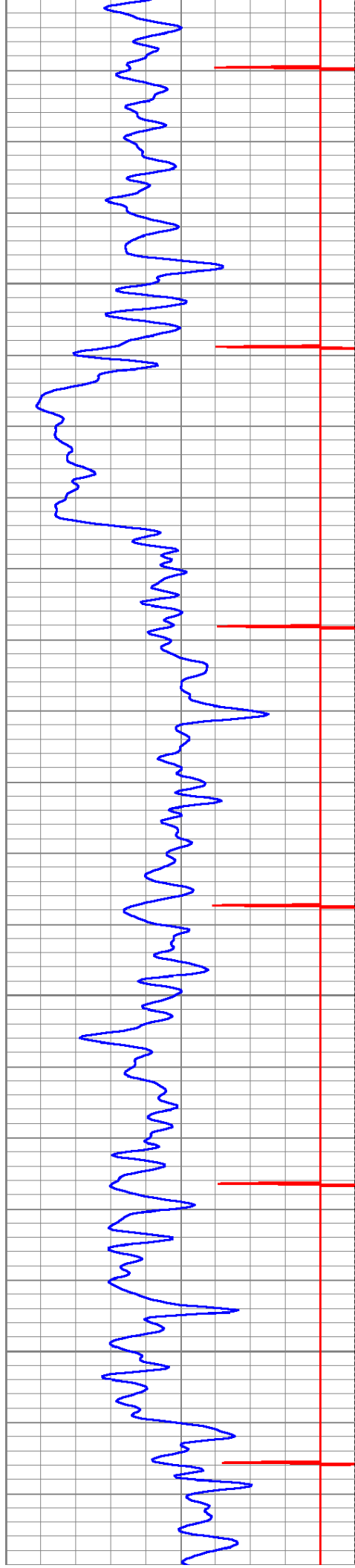
7250

7300

7350

7400





7450

7500

7550

7600

